



**WORLD'S BEST
ALLOY BULLBARS**

East Coast Bullbars (ECB Pty Ltd)

Tel: 07 3897 5700

Fax: 07 3283 1168

ecb@ecb.com.au www.ecb.com.au

29 Snook St
Clontarf QLD 4019
Australia

Po Box 122
Margate QLD 4019
Australia

BF26SY

REPLACES: 20.06.03

REVISED: 08.06.10

FITTING INSTRUCTIONS

F250 SUPER DUTY 00on BIG TUBE™ BULLBAR WITH 12000LB WARN WINCH MOUNTING BRACKET VEHICLE FRONTAL PROTECTION SYSTEM (VFPS) FOR AIR BAG & ADR COMPLIANT VEHICLES

Check installation hardware before commencing.

1. Remove bumper from vehicle chassis. Three plastic Christmas tree clips at bottom, two 18mm head bolts (each side) at front of chassis.
2. Fit winch mounting bracket to front of chassis. Use M10 x ½ x 1 ½ bolts, nuts and washers (supplied). **See figure 1.**
3. Align winch mounting bracket centrally and level with vehicle. **TIGHTEN ALL BOLTS AND NUTS.**
4. Using the winch mounting bracket as a guide drill four ½ holes through chassis. **See figure 2**
5. Use ½ x 1 ½ bolts/nuts and washers for inner top holes. **TIGHTEN BOLTS/NUTS.**
6. Use ½ x 2 bolts (supplied) for outer top holes, with ½ x 2 bolts protruding through winch mounting bracket and chassis - attach steel chassis support bracket (supplied) to bolt. Use ½ nuts/washers (supplied). **DO NOT TIGHTEN. See figure 3.**
7. Feed ½ nut plate (supplied) up through large hole in lower chassis, to align with slot hole in chassis side. **See figure 4.** Use ½ x 2 bolt/washers (supplied) to attach steel chassis support bracket. **See figure 3. TIGHTEN ALL BOLTS/NUTS.**
8. Move support brace on winch to rear if necessary. **See figures 5 and 6.**
9. Fit winch to winch mounting bracket. Use winch bolts supplied with winch. Fit two 6mm spacers each side (supplied) at rear of winch to space winch out 12mm. **See figure 7. TIGHTEN ALL BOLTS**
NOTE: Position of clutch lever. Rotate if necessary. See figure 8.
10. Fit control box to winch motor with worm drive clamps from winch fit kit.
NOTE: Centre of control box socket approximately 260mm from centre of winch and laying back approximately 12°, (135mm from winch base to centre of socket). See figures 9 & 10. TIGHTEN CONTROL BOX IN POSITION.
11. Connect all winch wiring as per winch instructions and **CHECK OPERATION OF WINCH**
12. Remove 2 PK screws from under indicator assembly. Ease indicator assembly forward out of two pop in/out location lugs. Splice ECB wiring into existing indicator and park light wiring and reassemble indicators.
13. Attach black clip lock trim along rear of protection bar starting at the end of channel return. **NOTE: Trim off lower edge on an angle so trim will sit flush with end of protection bar. See figures 11, 12 & diagram 1.**
14. Fit ECB LED indicator / park lights into protection bar as per instructions supplied with the LED indicator kit.
NOTE: Ensure park light is to outside. See figure 13.



**WORLD'S BEST
ALLOY BULLBARS**

East Coast Bullbars (ECB Pty Ltd)

Tel: 07 3897 5700

Fax: 07 3283 1168

ecb@ecb.com.au www.ecb.com.au

29 Snook St
Clontarf QLD 4019
Australia

Po Box 122
Margate QLD 4019
Australia

15. Attach roller fairlead to protection bar. Use 7/16 x 1 ½ bolts, nuts and washers (supplied).
16. Attach protection bar to inside of steel mounting brackets. Use M14x40x1.5 bolts and nuts (supplied).
NOTE: Feed winch cable through roller fairlead as installing.
17. Level protection bar with vehicle.

NOTE: Protection bar position is approximately 30mm up in front of grille and approximately 5mm clearance around front of grille with approximately 20-25mm clearance from guards when viewed from the side.
See figure 14. TIGHTEN ALL BOLTS. IT IS IMPORTANT TO INSTALL PROTECTION BAR AS ABOVE DUE TO A LARGE AMOUNT OF CHASSIS/BODY TWIST IN ROUGH TERRAIN.
18. Splice indicator/park light wiring into ECB indicator/park lights and **CHECK FOR CORRECT OPERATION.**
19. Re-attach original lower rubber protector to bracket welded to rear of protection bar skirt. Use original Christmas tree plastic clips.
20. **ENSURE** ECB air vents in skirt have ECB logo at bottom, thereby allowing airflow downward onto oil cooler.
21. Winch clutch lever and control box access is through front of protection bar. **See figure 15.**
22. For 2WD model without factory towing points. ECB towing point access holes are fitted to protection bar to allow for fitment of towing points if required.

ENSURE NUMBER PLATE IS CLEARLY VISABLE

Note: When fitting/refitting the licence plate to the vehicle, ensure there is no obstruction to licence plate vision in accordance with local authorities. If required relocate licence plate to an alternate location.

Further VFPS Notes:

- a) Do not attach VFPS to the vehicle using anchorages not intended for this purpose (e.g. engine mounting bolts).
- b) Do not use this product for any vehicle make or model, other than those specified by the VFPS manufacturer.
- c) Do not remove the plaque or label from the VFPS.
- d) Do not modify the structure of the VFPS in any way.
- e) No accessory or fitment should project forward of the VFPS forward profile.
- f) **ENSURE THESE INSTRUCTIONS ARE LEFT WITH VEHICLE OWNER AND/OR OPERATOR.**

FITTING KIT

1 – Steel winch mounting bracket.	30 – ½ flat washers.
2 – Steel chassis support brackets.	16 – ½ spring washers.
4 – 30 x 40 x 6mm steel spacers with 13mm hole in centre	6 – M14 x 40 x 1.5 bolts and nuts.
2 – 7/16 x 1 ½ bolts and nuts.	6 – 9/16 spring washers
4 – 7/16 flat washers	12 – 9/16 flat washers.
4 – 7/16 spring washers.	6 – Cable locks
12 – ½ x 1 ½ bolts and nuts	1 – 2440mm length 6mm clip lock trim.
4 – ½ x 2 bolts/nuts.	2 – Fog light trims.
2 – ½ nut plates.	1 – ECB LED Indicator / Park light kit.



East Coast Bullbars (ECB Pty Ltd)

Tel: 07 3897 5700

Fax: 07 3283 1168

ecb@ecb.com.au www.ecb.com.au

29 Snook St
Clontarf QLD 4019
Australia

Po Box 122
Margate QLD 4019
Australia

WORLD'S BEST
ALLOY BULLBARS



Figure 1



Figure 2 – Drivers side shown

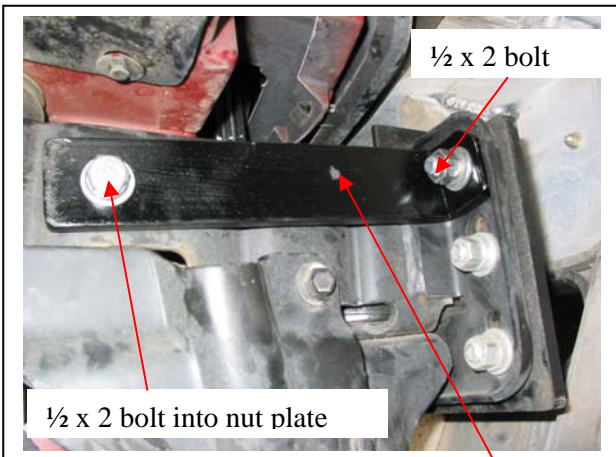


Figure 3 Steel chassis support bracket

Wire for nut plate

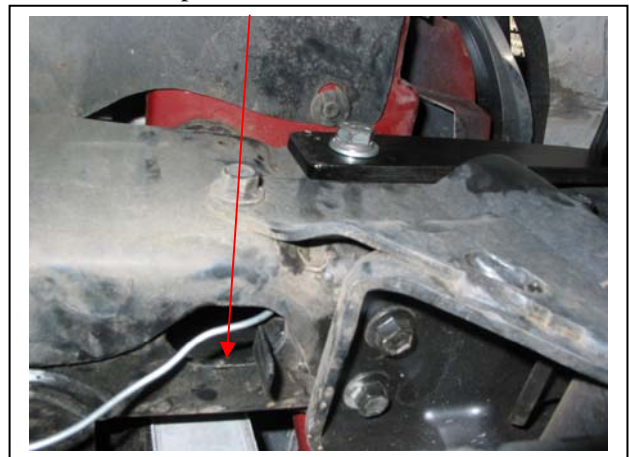


Figure 4

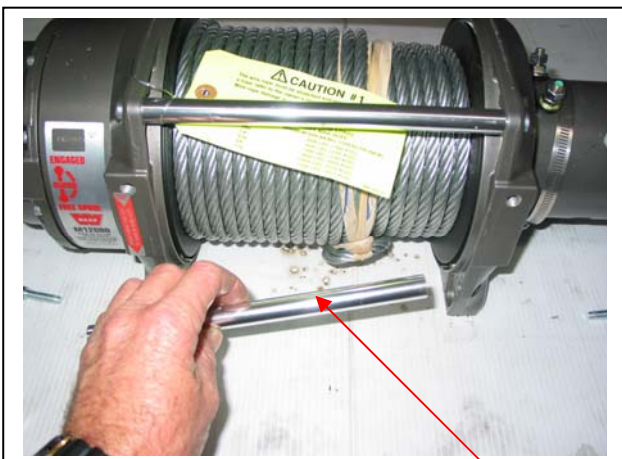
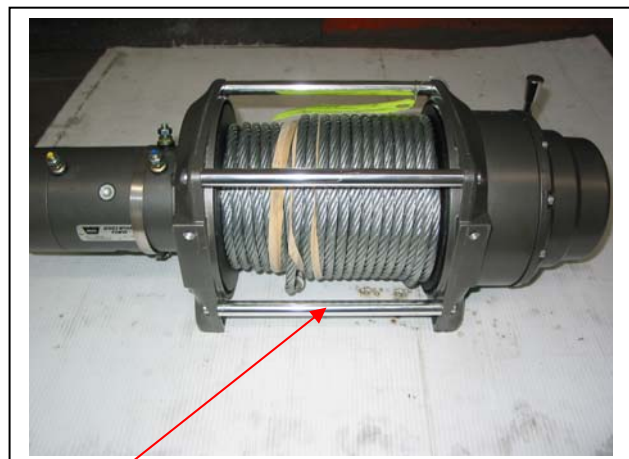


Figure 5 Remove front lower support brace



Refit to rear of winch
Figure 6



**WORLD'S BEST
ALLOY BULLBARS**

East Coast Bullbars (ECB Pty Ltd)

Tel: 07 3897 5700

Fax: 07 3283 1168

ecb@ecb.com.au www.ecb.com.au

29 Snook St
Clontarf QLD 4019
Australia

Po Box 122
Margate QLD 4019
Australia

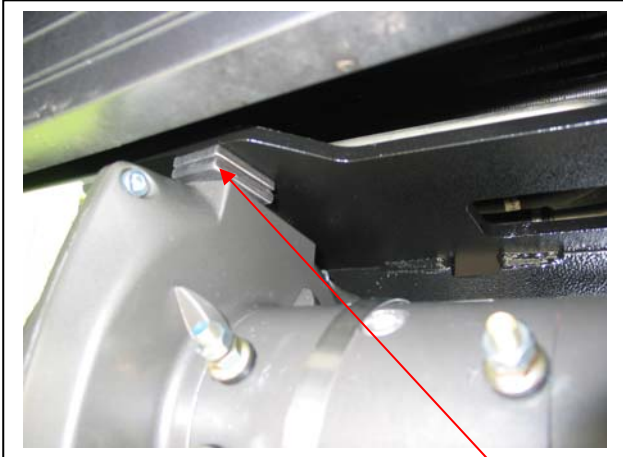


Figure 7 Two – 6mm spacers



Clutch lever **Figure 8**



Figure 9



Figure 10

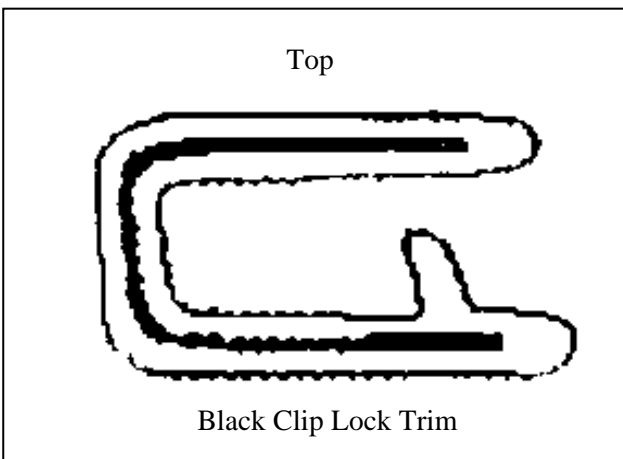


Diagram 1

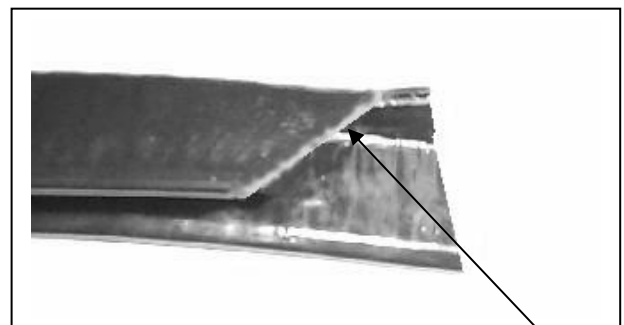


Figure 11 Trim lower edge on an angle.



East Coast Bullbars (ECB Pty Ltd)

Tel: 07 3897 5700

Fax: 07 3283 1168

ecb@ecb.com.au www.ecb.com.au

29 Snook St
Clontarf QLD 4019
Australia

Po Box 122
Margate QLD 4019
Australia

WORLD'S BEST
ALLOY BULLBARS

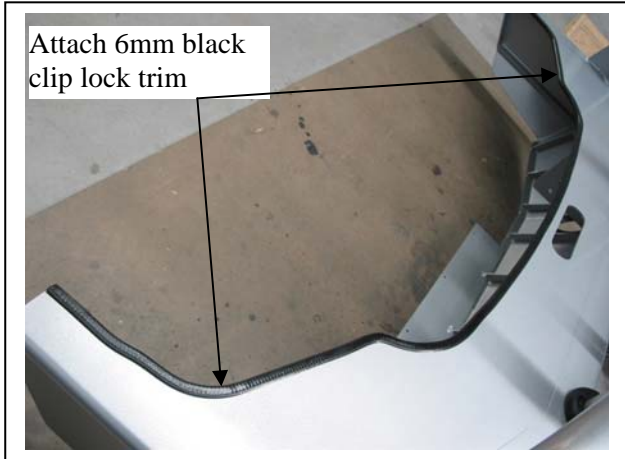


Figure 12

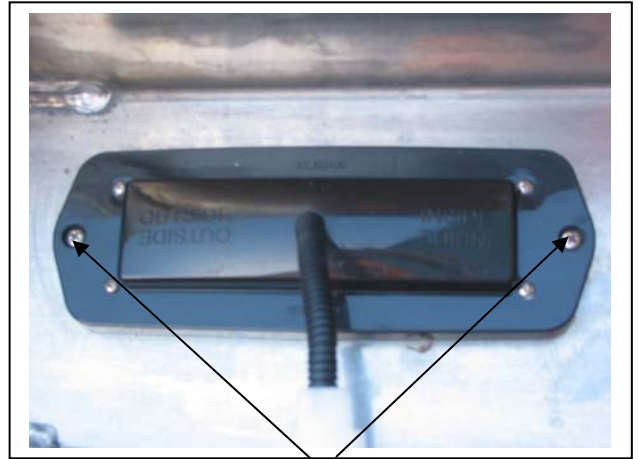


Figure 13
Stainless steel self-tappers



Figure 14



Figure 15



**WORLD'S BEST
ALLOY BULLBARS**

East Coast Bullbars (ECB Pty Ltd)

Tel: 07 3897 5700

Fax: 07 3283 1168

ecb@ecb.com.au www.ecb.com.au

29 Snook St
Clontarf QLD 4019
Australia

Po Box 122
Margate QLD 4019
Australia

We value your comments

Dear Fitter,

ECB would like to know how you went with the installation of this product. We value your comment and may need to contact you to clarify some details so please complete your contact details clearly.

We would appreciate if you could complete as many of the following details as possible.

Your Name:	Your contact No.
Product Part No.	Product Invoice No.
Product Description:	Make, model, and year of vehicle:
Product Work Order No.	Company your from/Company product purchased from:

Date of fitment: ____/____/____

Was the fitting hardware supplied complete?

Yes

No

If no what was not supplied

Did the installation go well?

Yes

No

Please provide comments

Please draw diagrams if you need to.

Post to

Reply Paid 122

PO Box 122

Margate QLD 4019

Fax to

(07) 3283 1168



WORLD'S BEST
ALLOY BULLBARS

East Coast Bullbars (ECB Pty Ltd)

Tel: 07 3897 5700

Fax: 07 3283 1168

ecb@ecb.com.au www.ecb.com.au

29 Snook St
Clontarf QLD 4019
Australia

Po Box 122
Margate QLD 4019
Australia

DESPATCH CHECKLIST BF26SY

Work Order #	
Finish:	
Transport:	
Due Date:	

- 1 – Steel winch mounting bracket.
- 2 – Steel chassis support brackets.
- 1 – Bolt kit.
- 1 – LED ECB indicator / park light kit.
- 1 – 24400mm length 6mm clip lock trim.
- 2 – ECB overrides – **Fitted to bar.**
- 3 – 6mm air scoops – **Fitted to bar.**
- 4 – Round cut out surrounds – **Fitted to bar.**

**See other side of
this page for
photos of all
mounts**



Is this product “the best it can be” Yes _____ / _____
Wrapper's initials / Checker initials

If **NO** fix before continuing

All parts checked and completed by:

Nut and bolts: _____ Date __/__/__

Order control: _____ Date __/__/__

Final wrap check: _____ Date __/__/__



**WORLD'S BEST
ALLOY BULLBARS**

East Coast Bullbars (ECB Pty Ltd)

Tel: 07 3897 5700

Fax: 07 3283 1168

ecb@ecb.com.au www.ecb.com.au

29 Snook St
Clontarf QLD 4019
Australia

Po Box 122
Margate QLD 4019
Australia

