



**WORLD'S BEST
ALLOY BULLBARS**

East Coast Bullbars (ECB Pty Ltd)

Tel: 07 3897 5700

Fax: 07 3283 1168

ecb@ecb.com.au www.ecb.com.au

29 Snook St
Clontarf QLD 4019
Australia

Po Box 122
Margate QLD 4019
Australia

BF25SY

REPLACES: 08.02.10

REVISED: 09.07.10

FITTING INSTRUCTIONS

F250 SUPER DUTY 00on BIG TUBE™ BULLBAR FOR VEHICLE FRONTAL PROTECTION SYSTEM (VFPS) AIR BAG & ADR COMPLIANT VEHICLES

Check installation hardware before commencing.

1. Remove bumper from vehicle chassis. Three plastic Christmas tree clips at bottom, two 18mm head bolts (each side) at front of chassis.
2. Attach ECB steel mounting brackets to chassis. Use ten ½ x 1 ½ bolt, nuts and washers (supplied) for original chassis holes. **See figure 1.**
3. Level and centre ECB steel mounting brackets (supplied) on chassis ensuring that sufficient space is left to mount alloy protection bar on inside on steel mounting brackets. **NOTE:** Hold as high up in chassis holes as possible.

NOTE: It is important to centre ECB steel mounting brackets with body of vehicle, **not chassis**, as some vehicles do not have centre of body aligned with centre of chassis. **TIGHTEN** ECB steel mounting brackets in position.

4. Once steel mounting brackets are tighten in position drill four 12mm holes through chassis using holes in steel mounting brackets as a guide. **See figure 2.**
5. Use ½ x 1 ½ bolts/nuts and washers for inner top holes. **TIGHTEN BOLTS/NUTS. See figure 3.**
6. Use ½ x 2 bolts (supplied) for outer top holes, with ½ x 2 bolts protruding through steel mounting brackets and chassis - attach steel chassis support bracket (supplied) to bolt. Use ½ nuts/washers (supplied). **DO NOT TIGHTEN. See figure 5.**
7. Feed ½ nut plate (supplied) up through large hole in lower chassis, to align with slot hole in chassis side. **See figure 4.** Use ½ x 2 bolt/washers (supplied) to attach steel chassis support bracket. **See figure 5. TIGHTEN ALL BOLTS/NUTS.**
8. Remove 2 PK screws from under indicator assembly. Ease indicator assembly forward out of two pop in/out location lugs. Splice ECB wiring harness into existing indicator and park light wiring and reassemble indicators. Use cable locks (supplied).
9. Attach black clip lock trim along rear of protection bar starting at the end of channel return. **NOTE:** Trim off lower edge on an angle so trim will sit flush with end of protection bar. **See figure 6 & diagram 1.**
10. Fit ECB LED indicator / park lights (supplied) into protection bar as per instructions supplied with the LED indicator kit. **NOTE: Ensure park light is to outside. See figure 7.**
11. Attach protection bar to inside of steel mounting brackets. Use M14x45x1.5 bolts and nuts (supplied).



**WORLD'S BEST
ALLOY BULLBARS**

East Coast Bullbars (ECB Pty Ltd)

Tel: 07 3897 5700

Fax: 07 3283 1168

ecb@ecb.com.au www.ecb.com.au

29 Snook St
Clontarf QLD 4019
Australia

Po Box 122
Margate QLD 4019
Australia

12. Level protection bar with vehicle.

NOTE: Protection bar position is approximately 30mm up in front of grille and approximately 5mm clearance around front of grille with approximately 20-25mm clearance from guards when viewed from the side. **See figure 8. TIGHTEN ALL BOLTS. IT IS IMPORTANT TO INSTALL PROTECTION BAR AS ABOVE DUE TO A LARGE AMOUNT OF CHASSIS/BODY TWIST IN ROUGH TERRAIN.**

13. Connect indicator/park light wiring into ECB indicator/park lights and **CHECK FOR CORRECT OPERATION.**

14. Re-attach original lower rubber protector to bracket welded to rear of protection bar skirt. Use original Christmas tree plastic clips.

15. **ENSURE CENTRE** ECB air vents in skirt have ECB logo at bottom, thereby allowing airflow downward onto oil cooler.

16. For 2WD model without factory towing points. ECB towing point access holes are fitted to protection bar to allow for fitment of towing points if required.

ENSURE NUMBER PLATE IS CLEARLY VISABLE

Note: When fitting/refitting the licence plate to the vehicle, ensure there is no obstruction to licence plate vision in accordance with local authorities. If required relocate licence plate to an alternate location.

Further VFPS Notes:

- a) Do not attach VFPS to the vehicle using anchorages not intended for this purpose (e.g. engine mounting bolts).
- b) Do not use this product for any vehicle make or model, other than those specified by the VFPS manufacturer.
- c) Do not remove the plaque or label from the VFPS.
- d) Do not modify the structure of the VFPS in any way.
- e) No accessory or fitment should project forward of the VFPS forward profile.
- f) **ENSURE THESE INSTRUCTIONS ARE LEFT WITH VEHICLE OWNER AND/OR OPERATOR.**

FITTING KIT.

2 – Steel mounting brackets.	6 – M14 x 45 x 1.5 bolts and nuts.
2 – Steel chassis support brackets.	12 – 9/16 flat washers.
12 – ½ x 1 ½ bolts and nuts	6 – 9/16 spring washers.
4 – ½ x 2 bolts/nuts.	6 – Cable locks
2 – ½ nut plates.	1 – 2440mm length 6mm clip lock trim.
30 – ½ flat washers.	1 – ECB LED Indicator / Park Light Kit
16 – ½ spring washers.	



East Coast Bullbars (ECB Pty Ltd)

Tel: 07 3897 5700

Fax: 07 3283 1168

ecb@ecb.com.au www.ecb.com.au

WORLD'S BEST ALLOY BULLBARS

29 Snook St
Clontarf QLD 4019
Australia

Po Box 122
Margate QLD 4019
Australia



Figure 1

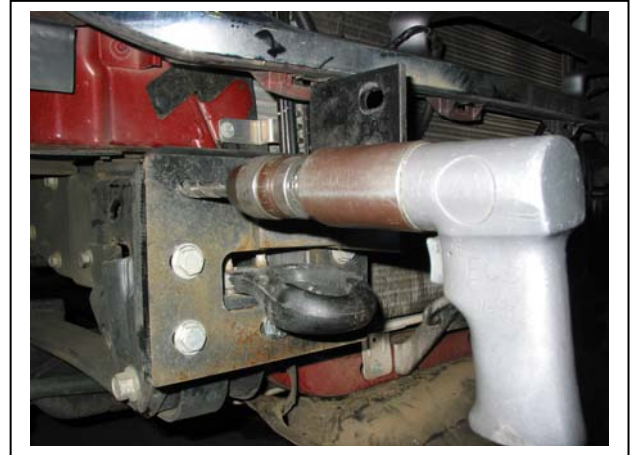


Figure 2

1/2 x 2 bolt

1/2 x 1 1/2 bolt

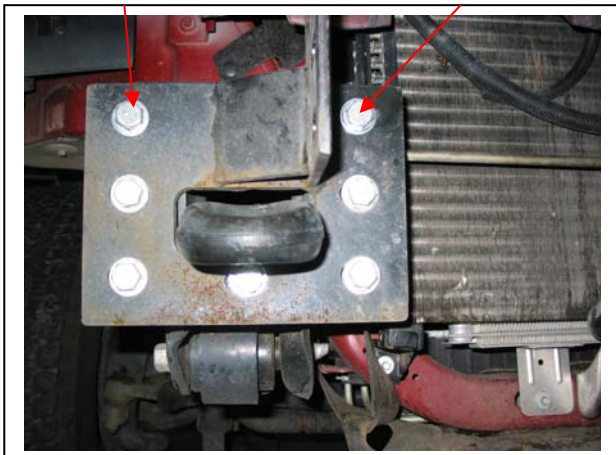


Figure 3 – Drivers side shown

Wire for nut plate

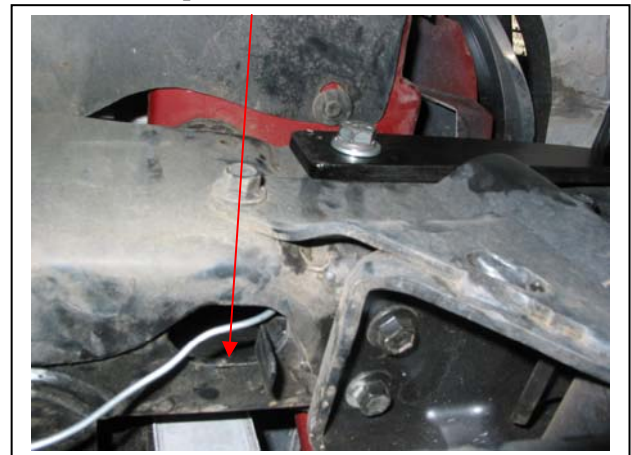
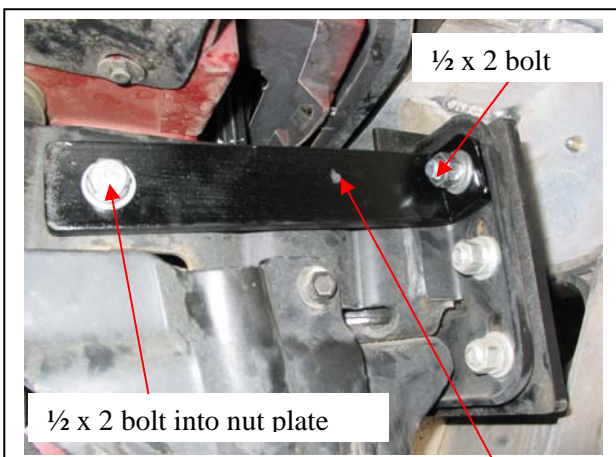


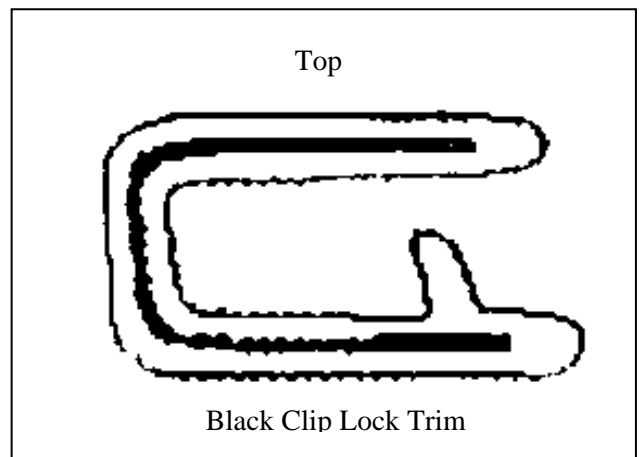
Figure 4



1/2 x 2 bolt

1/2 x 2 bolt into nut plate

Figure 5 Steel chassis support bracket



Top

Black Clip Lock Trim

Diagram 1



East Coast Bullbars (ECB Pty Ltd)

Tel: 07 3897 5700

Fax: 07 3283 1168

ecb@ecb.com.au www.ecb.com.au

29 Snook St
Clontarf QLD 4019
Australia

Po Box 122
Margate QLD 4019
Australia

WORLD'S BEST
ALLOY BULLBARS



Figure 6
Trim lower edge on an angle.

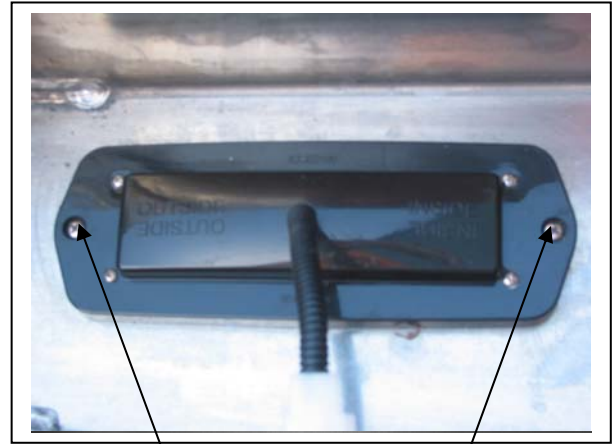
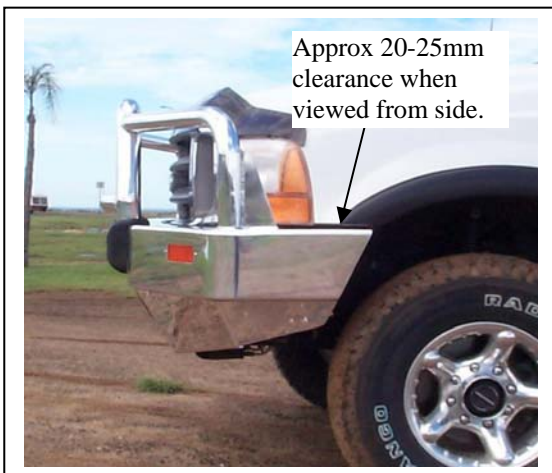


Figure 7
Stainless steel self-tappers



Approx 20-25mm
clearance when
viewed from side.

Figure 8



**WORLD'S BEST
ALLOY BULLBARS**

East Coast Bullbars (ECB Pty Ltd)

Tel: 07 3897 5700

Fax: 07 3283 1168

ecb@ecb.com.au www.ecb.com.au

29 Snook St
Clontarf QLD 4019
Australia

Po Box 122
Margate QLD 4019
Australia

We value your comments

Dear Fitter,

ECB would like to know how you went with the installation of this product. We value your comment and may need to contact you to clarify some details so please complete your contact details clearly.

We would appreciate if you could complete as many of the following details as possible.

Your Name:	Your contact No.
Product Part No.	Product Invoice No.
Product Description:	Make, model, and year of vehicle:
Product Work Order No.	Company your from/Company product purchased from:

Date of fitment: ___/___/___

Was the fitting hardware supplied complete? Yes No

If no what was not supplied

Did the installation go well? Yes No

Please provide comments

Please draw diagrams if you need to.

Post to
Reply Paid 122
PO Box 122
Margate QLD 4019

Fax to
(07) 3283 1168



**WORLD'S BEST
ALLOY BULLBARS**

East Coast Bullbars (ECB Pty Ltd)

Tel: 07 3897 5700

Fax: 07 3283 1168

ecb@ecb.com.au www.ecb.com.au

29 Snook St
Clontarf QLD 4019
Australia

Po Box 122
Margate QLD 4019
Australia



WORLD'S BEST
ALLOY BULLBARS

East Coast Bullbars (ECB Pty Ltd)

Tel: 07 3897 5700

Fax: 07 3283 1168

ecb@ecb.com.au www.ecb.com.au

29 Snook St
Clontarf QLD 4019
Australia

Po Box 122
Margate QLD 4019
Australia

DESPATCH CHECKLIST BF25SY

Work Order #	
Finish:	
Transport:	
Due Date:	

- 2 – Steel mounting brackets.
- 2 – Steel chassis support brackets.
- 1 – Bolt kit.
- 1 – Pair ECB LED indicator / park lights.
- 1 – 2440mm length 6mm clip lock trim.
- 2 – ECB overrides – **Fitted to Bar.**
- 5 – 6mm air scoops – **Fitted to Bar.**
- 2 – Round cut out surrounds – **Fitted to Bar.**

**See other side of
this page for
photos of all
mounts**



Is this product “the best it can be” Yes _____/_____

Wrapper's initials / Checker initials

If **NO** fix before continuing

All parts checked and completed by:

Nut and bolts: _____ Date __/__/__

Order control: _____ Date __/__/__

Final wrap check: _____ Date __/__/__



**WORLD'S BEST
ALLOY BULLBARS**

East Coast Bullbars (ECB Pty Ltd)

Tel: 07 3897 5700

Fax: 07 3283 1168

ecb@ecb.com.au www.ecb.com.au

29 Snook St
Clontarf QLD 4019
Australia

Po Box 122
Margate QLD 4019
Australia

