



WORLD'S BEST
ALLOY BULLBARS

East Coast Bullbars (ECB Pty Ltd)

Tel: 07 3897 5700

Fax: 07 3283 1168

ecb@ecb.com.au www.ecb.com.au

29 Snook St
Clontarf QLD 4019
Australia

Po Box 122
Margate QLD 4019
Australia

BF09SY

REPLACES: 22.02.10
REVISED: 09.07.10

FITTING INSTRUCTIONS

FORD BA & BF FALCON & RTV BIG TUBE™ PROTECTION BAR VEHICLE FRONTAL PROTECTION SYSTEM (VFPS) FOR AIR BAG AND ADR COMPLIANT VEHICLES

Check installation hardware before commencing.

NOTE: Blow all filings from chassis and treat all drilled holes with paint or rust proofing as installing.

- 1a. For BA Falcon: Lift bonnet – Remove grille (two plastic PK clips) – Remove plastic cover from top of radiator support panel (four plastic PK clips).
Remove two 10mm head bolts from top of bumper cover.
Remove two plastic PK clips and one PK self-tapper (each side) from bumper cover side returns.
Remove plastic under guard from bumper cover – Ten 7mm head self-tappers and two plastic PK clips. Pull bumper cover out at side returns to release side clips. **See figure 1.** Remove bumper cover.
- 1b. For RTV Lift bonnet – Remove grille (two plastic PK clips) – Remove plastic cover from top of radiator support panel (four plastic PK clips).
Remove two 10mm head bolts from top of bumper cover.
Remove three PK self-tappers (each side) from front side of flare. Remove one plastic PK clip from front underside of flare (each side) pull flare clear to access one plastic PK clip and one PK self tapper (each side).
Remove plastic under guard from bumper cover – Ten 7mm head self-tappers and two plastic PK clips. Pull bumper cover out at side returns to release side clips. **See figure 1.** Remove bumper cover.
2. Slide steel mount (supplied) up behind plastic honeycomb on front of chassis. Position hard up against bottom of chassis. Ensure steel mount is centralised.
3. Mark where holes are to be drilled in front of chassis. **See figure 2.** Remove steel mount and drill marked holes to 10mm. **See figure 3. Treat drilled holes with paint or rust proofing.**
4. Bend wire on 3/8 x 1 ¼ bolts/washers (supplied) to access drilled holes through front of chassis.
5. Position steel mount on chassis and insert 3/8 x 1 ¼ bolts, washers on wire (supplied) through drilled holes. Ensure steel mount is level, central and hard up against lower chassis. Use 3/8 nuts and washers (supplied) and **TIGHTEN FIRM ONLY IN POSITION. See figure 4. NOTE:** On BF Models: The honeycomb sits slightly higher on chassis. Cut out with side cutters for flat washers to fit. **See figure 4a.**
6. For side brackets on steel mount drill one 10mm hole (each side) through lower chassis. Use steel mount as a guide. **Treat drilled holes with paint or rust proofing.** Use 3/8 x 1 ¼ bolt, washer on wire (supplied) access through front of chassis. Use 3/8 nut/washer. **TIGHTEN IN POSITION. See figure 5.**
7. For rear brackets on steel mount drill two 10mm holes through flange on chassis. Ensure holes are drilled in centre of flange to allow fitment of washers. **Treat drilled holes with paint or rust proofing.** Use 3/8 x 1 ¼ bolt, nuts and washers (supplied). **TIGHTEN IN POSITION. See figure 6 and 7. NOTE:** Use smaller diameter flat washers (supplied).
8. **TIGHTEN** front steel mount nuts fully.



**WORLD'S BEST
ALLOY BULLBARS**

East Coast Bullbars (ECB Pty Ltd)

Tel: 07 3897 5700

Fax: 07 3283 1168

ecb@ecb.com.au www.ecb.com.au

29 Snook St
Clontarf QLD 4019
Australia
Po Box 122
Margate QLD 4019
Australia

9. Feed 3/8 x 1 ¼ bolt, washer on wire (supplied) through 30mm hole in cross member to protrude through 11mm hole. **See figure 8.**
- 10a. For BA models: Attach brace mount to 3/8 x 1 ¼ bolt, washer on wire. Use 3/8 nut/washer (supplied) **FINGER TIGHTEN ONLY See figure 9.** Use 3/8 x 1 ½ bolts, nuts and washers (supplied) to secure to steel mount **See figure 10 & 10a. TIGHTEN ALL BOLTS/NUTS.**
- 10b. For RTV models: Remove two 13mm head bolts from front of plastic protection guard. Trim approximately 35mm from front lip on plastic protection guard. **See figure 11.** Slide ECB brace mount between plastic protection guard and chassis cross member. Attach to steel mount. Use 3/8 x 1 ½ bolt, nut and washers (supplied) **FINGER TIGHTEN ONLY.** Attach to chassis cross member using original bolt. **See figure 12. TIGHTEN ALL BOLTS AND NUTS FULLY.**
11. Cut excess wire from each 3/8 bolts/washers on wire and crimp tight around chassis so as to avoid rattling and/or vibration. **See figures 13 & 13a.**
12. Ensure all power steering cooler lines are well clear of steel mounting bracket and brace mounts.
13. Splice ECB indicator / park light wiring into original wiring loome.
NOTE: Remove indicator and park light bulb assemblies for easier access.
14. Fit ECB LED indicator / park lights (supplied) into protection bar as per instructions supplied with the LED indicator kit. **NOTE: Ensure park light is to outside. See figure 14.**
15. Fit 6mm clip lock trim to rear of protection bar. **NOTE:** Trim off lower edge on an angle so trim will sit flush with end of protection bar. **See figures 15, 16 and 17.**
16. For BF Models: Trim Black insert on bumper cover to clear steel mount. **See figure 18.** Alternatively black insert can be removed from bumper cover. **See figure 19.**
17. Apply masking tape or similar to bumper cover to avoid marking. **See figure 20.**
18. Slide bumper cover over steel mounts and reattach to vehicle. Ensure bumper cover is centred with steel mount. Reattach plastic cover from radiator support panel and grille.
19. Position protection bar on outside of steel mount. Use four 3/8 x 1 ½ bolts, nuts and washers (supplied). Align in position. **See figure 21 for side view. TIGHTEN ALL BOLTS/NUTS.** Once protection bar has been positioned and outer mountings are tight. Drill 10mm holes through centre alloy mount using steel mount as a guide. Use two 3/8 x 1 ½ bolts/nuts (supplied) **TIGHTEN.**

NOTE: Access through airflow cut out in protection bar. **See figures 22 and 22a.**
20. Fit 3mm clip lock trim (supplied) around airflow cut outs in protection bar. **See figure 23.**
21. Feed indicator / park lights wiring through beside steel mount and attach to ECB indicator / park lights.
22. Trim plastic under guard to fit around brace mount and reattach to vehicle. **See figure 24.**
NOTE: On RTV models also trim off two front lugs. **See figure 25.**
23. Check indicator / park lights for correct operation.



East Coast Bullbars (ECB Pty Ltd)

Tel: 07 3897 5700

Fax: 07 3283 1168

ecb@ecb.com.au www.ecb.com.au

29 Snook St
Clontarf QLD 4019
Australia

Po Box 122
Margate QLD 4019
Australia

WORLD'S BEST
ALLOY BULLBARS

ENSURE NUMBER PLATE IS CLEARLY VISABLE

Note: When fitting/refitting the licence plate to the vehicle, ensure there is no obstruction to licence plate vision in accordance with local authorities. If required relocate licence plate to an alternate location.

Further VFPS Notes:

- a) Do not attach VFPS to the vehicle using anchorages not intended for this purpose (e.g. engine mounting bolts).
- b) Do not use this product for any vehicle make or model, other than those specified by the VFPS manufacturer.
- c) Do not remove the plaque or label from the VFPS.
- d) Do not modify the structure of the VFPS in any way.
- e) No accessory or fitment should project forward of the VFPS forward profile.
- f) **ENSURE THESE INSTRUCTIONS ARE LEFT WITH VEHICLE OWNER AND/OR OPERATOR.**

IMPORTANT INFORMATION

Periodically check bolts and nuts for correct tightness, especially if travelling on rough roads

FITTING KIT

1 – Steel mount.	18 – 3/8 spring washers.
2 – Steel brace mounts.	4 – 3/8 stainless steel flat washers (20mm OD)
2 – 3/8 x 1 ¼ bolts.	1 – 2220mm length 6mm clip lock.
10 – 3/8 x 1 ½ bolts.	2 – 400mm lengths 3mm clip lock
6 – 3/8 x 1 ¼ bolts, washers on 300mm wire.	6 – Cable locks.
18 – 3/8 nuts.	1 – ECB LED Indicator / Park light kit
26 – 3/8 flat washers.	

NOTE: Two – 3/8 x 1 ¼ bolts, washer on wire, Two – 3/8 flat washers, Two – 3/8 spring washers and Two – 3/8 nuts will not be required if fitting to **RTV** models.



Figure 1 – Sedan Model shown

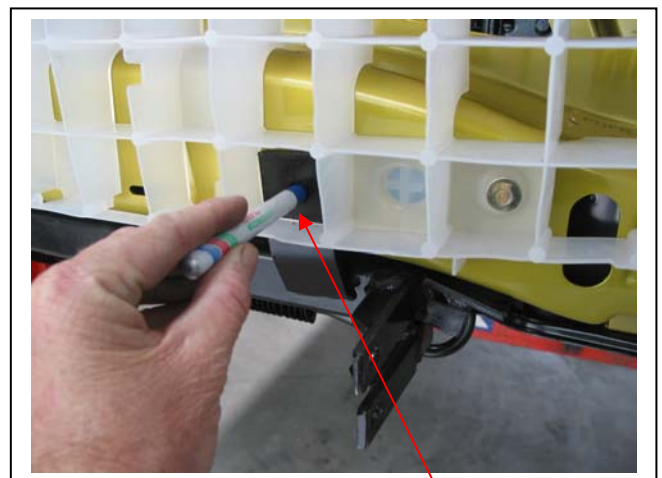


Figure 2 Marking area to be drilled



East Coast Bullbars (ECB Pty Ltd)

Tel: 07 3897 5700

Fax: 07 3283 1168

ecb@ecb.com.au www.ecb.com.au

29 Snook St
Clontarf QLD 4019
Australia

Po Box 122
Margate QLD 4019
Australia

WORLD'S BEST
ALLOY BULLBARS

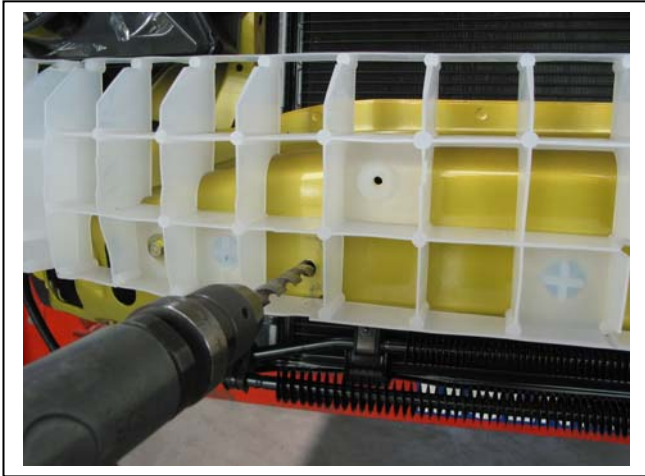
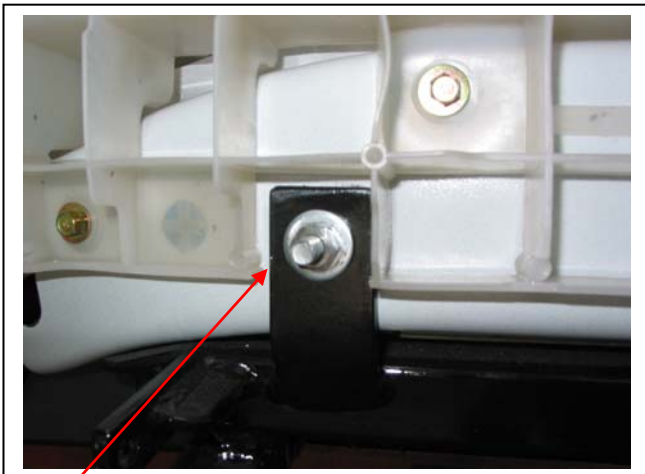


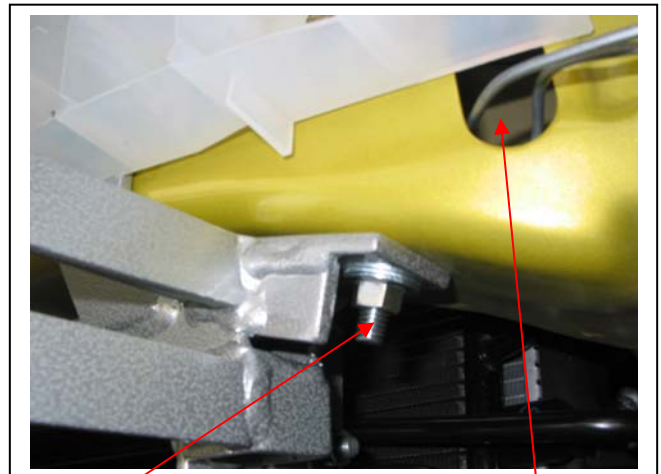
Figure 3



Figure 4



Cut honeycomb plastic here
Figure 4a – Drivers side shown



3/8 x 1 1/4 bolt /washer
Figure 5

Feed in here

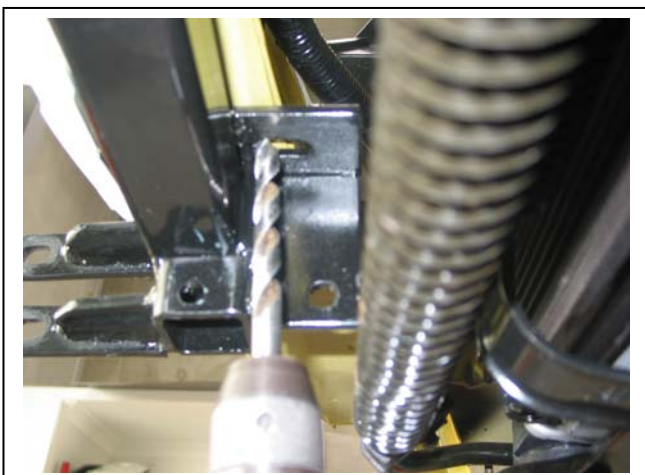
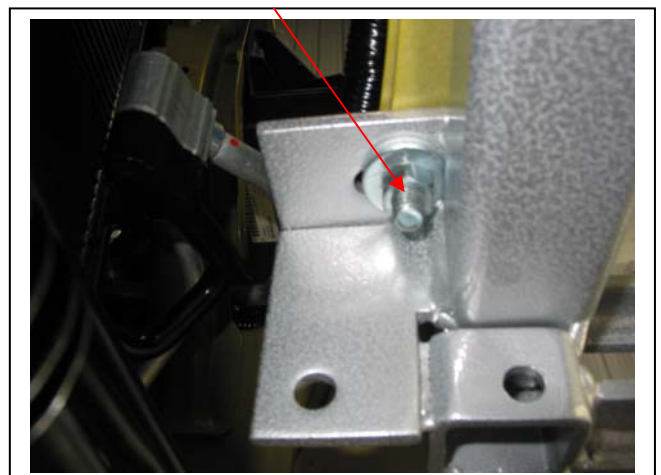


Figure 6
Drilling rear flange



3/8 x 1 1/4 bolt/nut/washer

Figure 7



East Coast Bullbars (ECB Pty Ltd)

Tel: 07 3897 5700

Fax: 07 3283 1168

ecb@ecb.com.au www.ecb.com.au

29 Snook St
Clontarf QLD 4019
Australia

Po Box 122
Margate QLD 4019
Australia

WORLD'S BEST
ALLOY BULLBARS

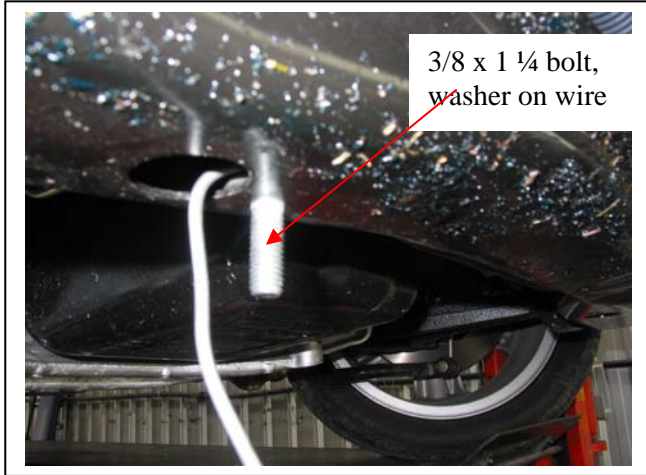


Figure 8



Figure 9 – Drivers side shown



Figure 10 – Passenger side shown



Figure 10a – Drivers side shown

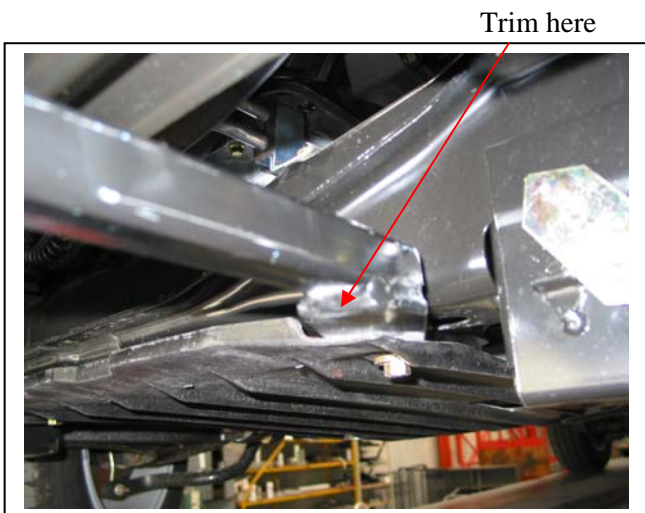


Figure 11 – RTV Model passenger side shown

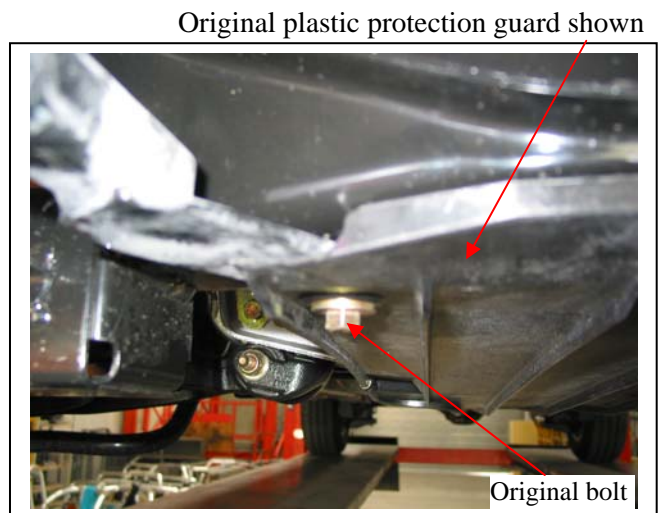


Figure 12 – RTV Model driver side shown



East Coast Bullbars (ECB Pty Ltd)

Tel: 07 3897 5700

Fax: 07 3283 1168

ecb@ecb.com.au www.ecb.com.au

29 Snook St
Clontarf QLD 4019
Australia

Po Box 122
Margate QLD 4019
Australia

Crimp wire tight

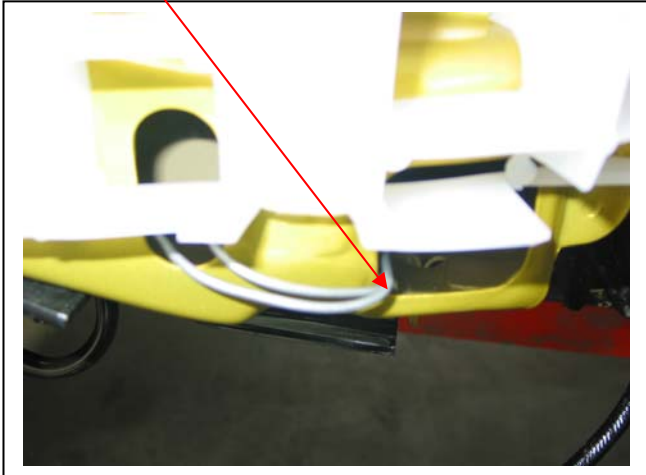


Figure 13

Crimp wire tight



Figure 13a

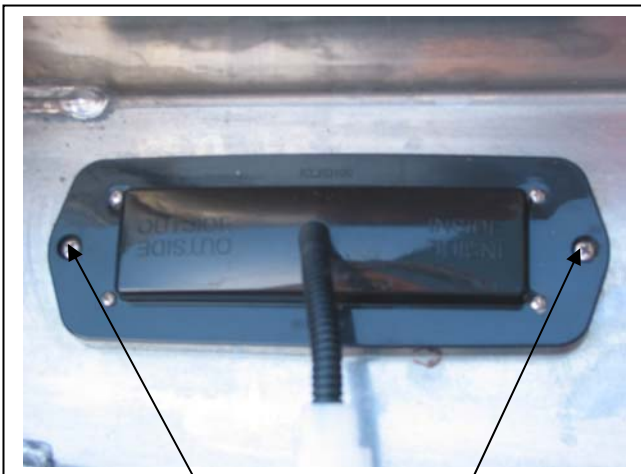
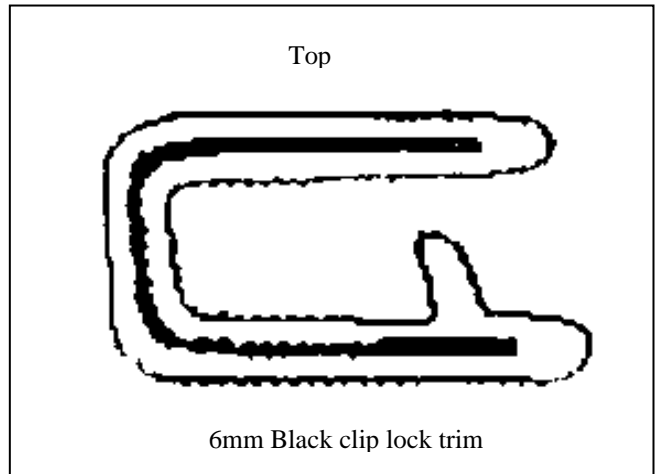


Figure 14
Stainless steel self-tappers



Top
6mm Black clip lock trim

Figure 15

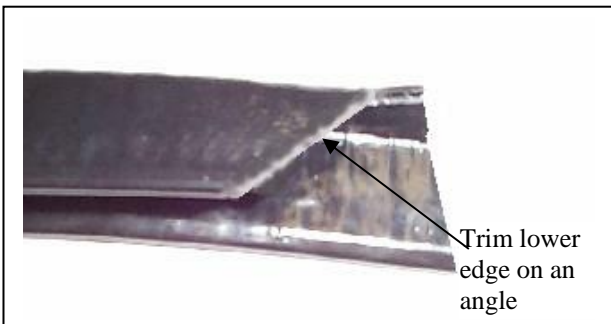
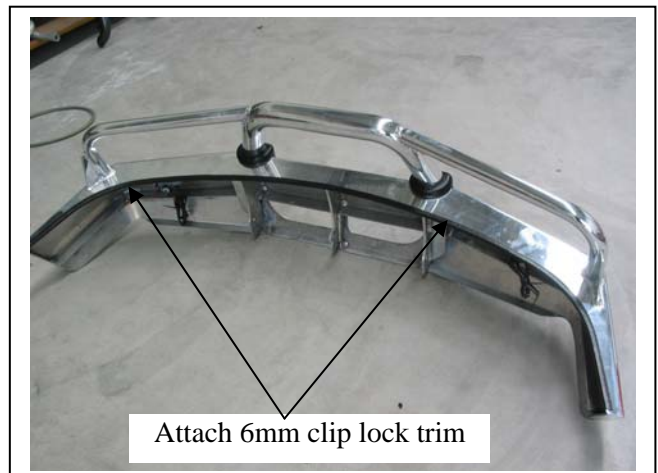


Figure 16

Trim lower edge on an angle



Attach 6mm clip lock trim

Figure 17



East Coast Bullbars (ECB Pty Ltd)

Tel: 07 3897 5700

Fax: 07 3283 1168

ecb@ecb.com.au www.ecb.com.au

29 Snook St
Clontarf QLD 4019
Australia

Po Box 122
Margate QLD 4019
Australia

WORLD'S BEST
ALLOY BULLBARS



Figure 18 – BF Model Passenger side shown



Figure 19 – BF Model shown



Figure 20 – BA Model shown



Figure 21

Access for impact gun through Protection Bar skirt



Figure 22

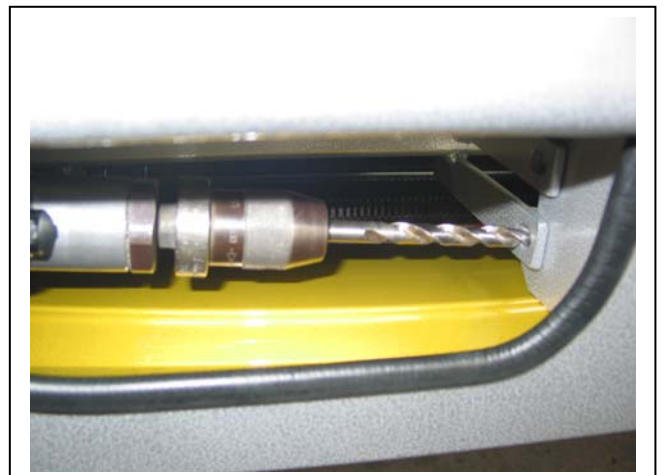


Figure 22a



East Coast Bullbars (ECB Pty Ltd)

Tel: 07 3897 5700

Fax: 07 3283 1168

ecb@ecb.com.au www.ecb.com.au

29 Snook St
Clontarf QLD 4019
Australia

Po Box 122
Margate QLD 4019
Australia

WORLD'S BEST
ALLOY BULLBARS

Attach 3mm clip lock around airflow cut outs

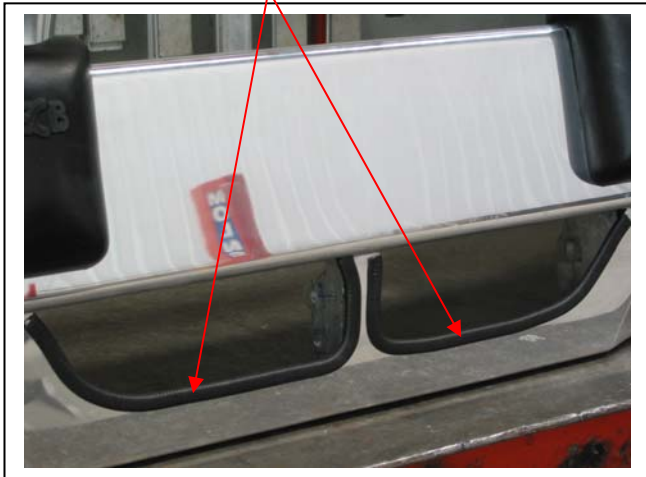


Figure 23

Trim out to fit around brace mounts

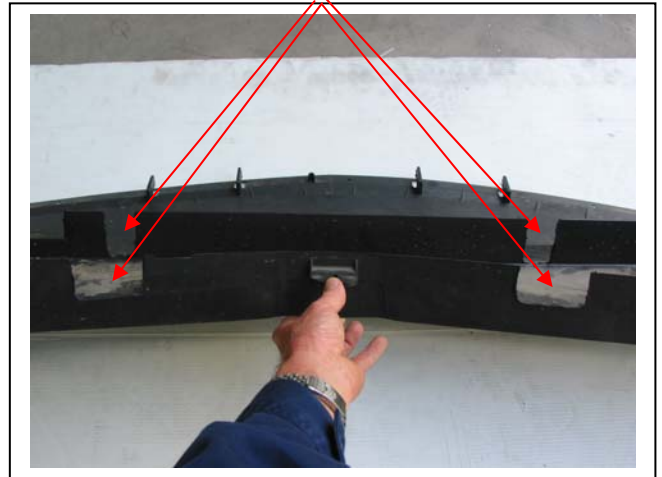


Figure 24

RTV Models – Trim off two lugs



Figure 25



East Coast Bullbars (ECB Pty Ltd)

Tel: 07 3897 5700

Fax: 07 3283 1168

ecb@ecb.com.au www.ecb.com.au

29 Snook St
Clontarf QLD 4019
Australia

Po Box 122
Margate QLD 4019
Australia

WORLD'S BEST
ALLOY BULLBARS

We value your comments

Dear Fitter,

ECB would like to know how you went with the installation of this product. We value your comment and may need to contact you to clarify some details so please complete your contact details clearly.

We would appreciate if you could complete as many of the following details as possible.

Your Name:	Your contact No.
Product Part No.	Product Invoice No.
Product Description:	Make, model, and year of vehicle:
Product Work Order No.	Company your from/Company product purchased from:

Date: ____/____/____

Was the fitting hardware supplied complete?

Yes

No

If no what was not supplied

Did the installation go well?

Yes

No

Please provide comments

Please draw diagrams if you need to.

Post to
Reply Paid 122
PO Box 122
Margate QLD 4019

Fax to
(07) 3283 1168



**WORLD'S BEST
ALLOY BULLBARS**

East Coast Bullbars (ECB Pty Ltd)

Tel: 07 3897 5700

Fax: 07 3283 1168

ecb@ecb.com.au www.ecb.com.au

29 Snook St
Clontarf QLD 4019
Australia

Po Box 122
Margate QLD 4019
Australia



East Coast Bullbars (ECB Pty Ltd)

Tel: 07 3897 5700

Fax: 07 3283 1168

ecb@ecb.com.au www.ecb.com.au

29 Snook St
Clontarf QLD 4019
Australia

Po Box 122
Margate QLD 4019
Australia

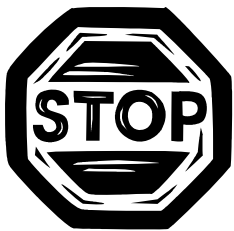
WORLD'S BEST
ALLOY BULLBARS

DESPATCH CHECKLIST BF09SY

Work Order #	
Finish:	
Transport:	
Due Date:	

- OC.....1 – Steel mount.
- OC.....2 – Steel brace mounts.
- BK.....1 – Bolt Kit
- BK.....1 – ECB LED Indicator / Park light kit
- BK.....1 – 2220mm length 6mm clip lock
- BK.....2 – 400mm lengths 3mm clip lock
- OC.....2 – ECB trimmed overrides – **Fitted to Bar**

**See other side of
this page for
photos of all
mounts**



Is this product “the best it can be” Yes _____ / _____
Wrapper's initials / Checker initials

If **NO** fix before continuing

All parts checked and completed by:

Nut and bolts: _____ Date __/__/__

Order control: _____ Date __/__/__

Final wrap check: _____ Date __/__/__



East Coast Bullbars (ECB Pty Ltd)

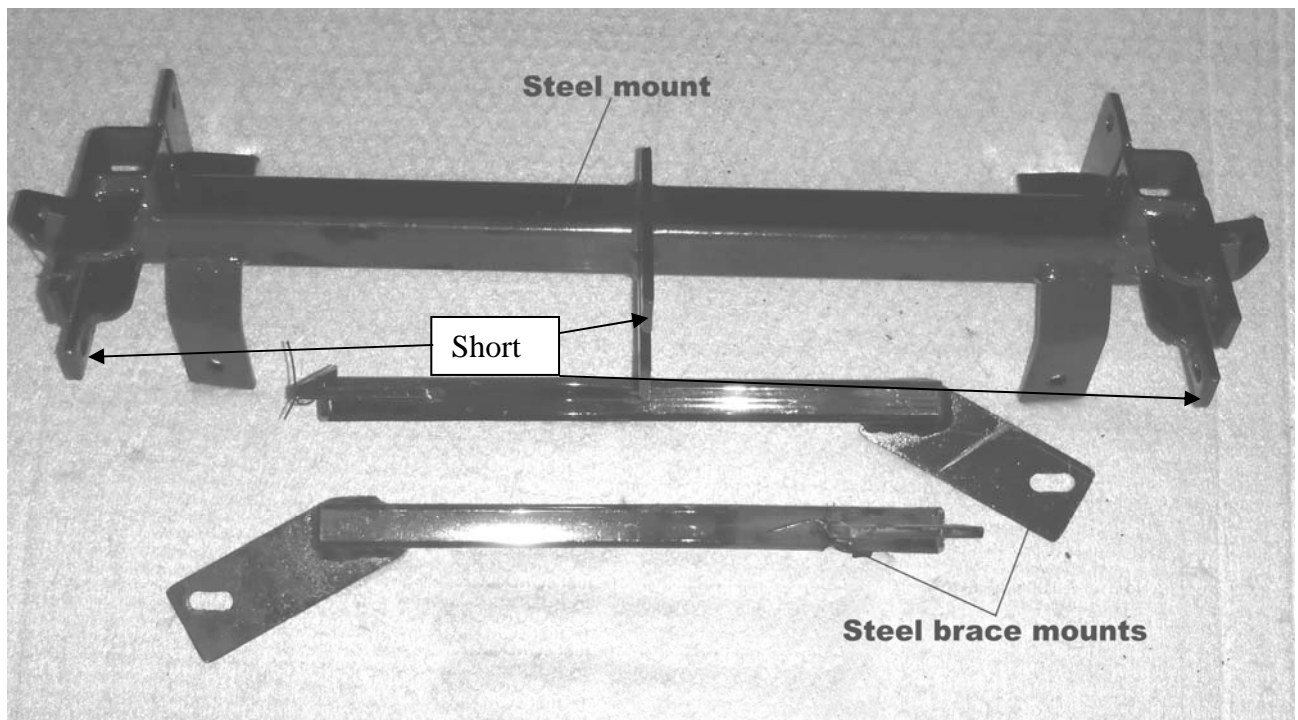
Tel: 07 3897 5700

Fax: 07 3283 1168

ecb@ecb.com.au www.ecb.com.au

29 Snook St
Clontarf QLD 4019
Australia

Po Box 122
Margate QLD 4019
Australia



_____/_____
Wrapper's initials / Checker initials