



WORLD'S BEST
ALLOY BULLBARS

East Coast Bullbars (ECB Pty Ltd)

Tel: 07 3897 5700

Fax: 07 3283 1168

ecb@ecb.com.au www.ecb.com.au

29 Snook St
Clontarf QLD 4019
Australia

Po Box 122
Margate QLD 4019
Australia

8V40SY / NB6V40SY/ NBV40SY

REPLACES: 00.00.00

REVISED: 05.09.11

FITTING INSTRUCTIONS

VOLKSWAGON AMAROK 2/11 ON TYPE 8, 63mm SERIES 2 NUDGE BAR and 76mm NUDGE BAR VEHICLE FRONTAL PROTECTION SYSTEM (VFPS) FOR AIR BAG & ADR COMPLIANT VEHICLES

Check installation hardware before commencing.
Special Requirements: T25 and T30 Torx drivers.

1. Lift bonnet.
2. Using a small flat screwdriver, gently remove fog light surrounds. Lever from inside top corner. Remove two 14mm head bolts beside top of light (1 per side).
3. From under wheel arches, remove three T25 Torx head screws and two T30 Torx head bolts. Under bonnet, remove four 3mm allen head plastic screw clip. Remove centre number plate two T25 Torx head screws behind number plate (if fitted). Gently pull sides of bumper away from vehicle to unclip from retaining clips, and down on lower rear corner to unlock from retaining lug at front of inner guard. Disconnect fog lights (if fitted) and remove air sensor from bumper as removing bumper.
4. Remove lower polystyrene bumper infill.
5. Remove two grey push pull clips from front of chassis cross member into lower air dam. Carefully unclip lower air dam from front of radiator and remove.
6. From inside of rails, remove horns, one 10mm head bolt (per side) and separate horn bracket from attachment bracket, one T50 Torx head bolt.
7. From inside of passengers side of chassis rail, where horn was removed, use a punch to remove nutsert (rivet style nut) from rail. **See figure 1.**
8. Fit ECB steel mounting brackets (supplied) to front of bumper support, rear leg to inside of chassis rails. **See figure 2.** Use two ½ x 1 ¼ bolts, flat washers, spring washers and nuts (supplied) for front, one 3/8 x 1 ¼ bolt and washer on 300mm wire, flat washer, spring washer and nut (supplied) for passengers side inner of chassis rail and one M8 x 30 bolt, flat washer, spring washer (supplied) for drivers side inner chassis rail. Inside of passengers side chassis rail is accessible from welded connection area between chassis rail and front cross member. **See figure 3. Finger tighten only.** Ensure mounts are vertical.
9. Measure outside measurement of alloy mounts. Set measurement between ECB steel mounting brackets to suit ECB alloy protection bar. **Tighten all bolts.** Ensure ECB steel mounting brackets remain vertical and central to vehicle.
10. Using measurement previously taken for ECB steel mounting brackets, measure and mark bumper for trimming. Check measure marking to ensure correct measurements. Trim bumper to suit mounts.
11. Hold polystyrene bumper infill against mounts. **See figure 4.** Trim to fit around mounts into correct position. Refit to vehicle.



**WORLD'S BEST
ALLOY BULLBARS**

East Coast Bullbars (ECB Pty Ltd)

Tel: 07 3897 5700

Fax: 07 3283 1168

ecb@ecb.com.au www.ecb.com.au

29 Snook St
Clontarf QLD 4019
Australia

Po Box 122
Margate QLD 4019
Australia

12. Trim attachment points from radiator air dam. **See figure 5.** Refit to bottom of radiator and chassis cross member in original position.
13. Refit horns to top holes ECB steel mounting bracket using one M8 x 30 bolts, flat washers, spring washers and nuts (supplied).
14. Refit bumper to vehicle as per reverse of steps 2 and 3.
15. Fit ECB protection bar to front of ECB steel mounting brackets using two 3/8 x 1 1/2 bolts, flat washers, spring washers and nuts (per side) (supplied). **Finger tighten only.**
16. Align ECB protection bar to vehicle. **See figures 6, 8 and 10 for front views and 7, 9 and 11 for side views. Tighten all bolts.**

ENSURE NUMBER PLATE IS CLEARLY VISABLE

Note: When fitting/refitting the licence plate to the vehicle, ensure there is no obstruction to licence plate vision in accordance with local authorities. If required relocate licence plate to an alternate location.

Further VFPS Notes:

- a) Do not attach VFPS to the vehicle using anchorages not intended for this purpose (e.g. engine mounting bolts).
- b) Do not use this product for any vehicle make or model, other than those specified by the VFPS manufacturer.
- c) Do not remove the plaque or label from the VFPS.
- d) Do not modify the structure of the VFPS in any way.
- e) No accessory or fitment should project forward of the VFPS forward profile.
- f) **ENSURE THESE INSTRUCTIONS ARE LEFT WITH VEHICLE OWNER AND/OR OPERATOR.**

IMPORTANT INFORMATION

Periodically check bolts and nuts for correct tightness, especially if travelling on rough roads

FITTING KIT

1 – Pair ECB steel mounting brackets	9 – 3/8 flat washers
4 – 1/2 x 1 1/4 bolts	5 – 3/8 spring washers
8 – 1/2 flat washers	5 – 3/8 nuts
4 – 1/2 spring washers	3 – M8 x 30 bolt
4 – 1/2 nuts	5 – M8 flat washer
1 – 3/8 x 1/4 bolt and washer on 300mm wire	3 – M8 spring washer
4 – 3/8 x 1 1/2 bolts	2 – M8 nuts



East Coast Bullbars (ECB Pty Ltd)

Tel: 07 3897 5700

Fax: 07 3283 1168

ecb@ecb.com.au www.ecb.com.au

WORLD'S BEST
ALLOY BULLBARS

29 Snook St
Clontarf QLD 4019
Australia

Po Box 122
Margate QLD 4019
Australia

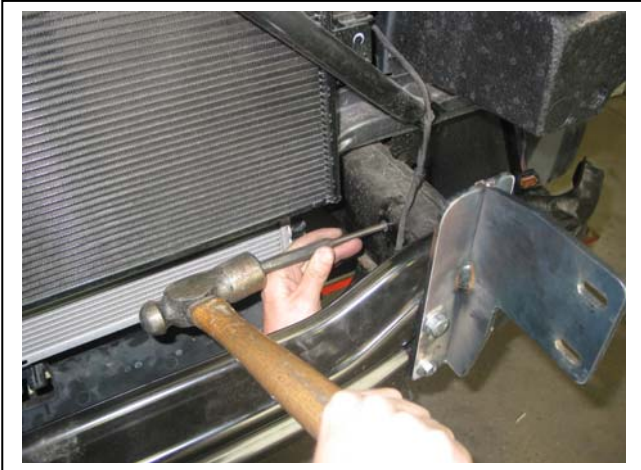


Figure 1: Remove riveted nut (nutsert)



Figure 2: Rear leg fitment to inside of chassis rail.

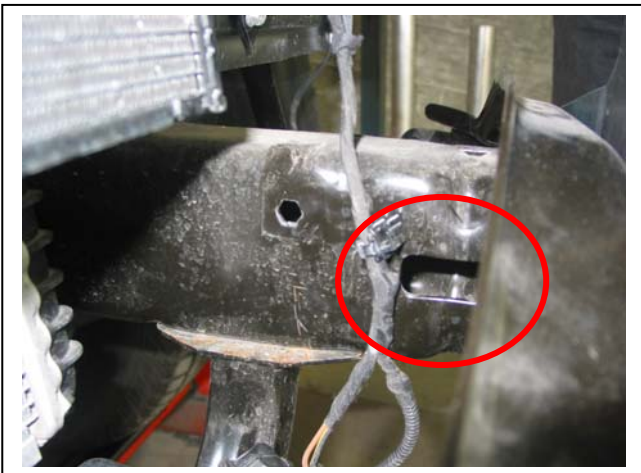


Figure 3: Opening in front of chassis rail.



Figure 4: Mark and trim polystyrene infill.



Figure 5: ECB mounts fitted to front of cross member.



Figure 6: Trim chassis air dam.



East Coast Bullbars (ECB Pty Ltd)

Tel: 07 3897 5700

Fax: 07 3283 1168

ecb@ecb.com.au www.ecb.com.au

WORLD'S BEST
ALLOY BULLBARS

29 Snook St
Clontarf QLD 4019
Australia

Po Box 122
Margate QLD 4019
Australia



Figure 7: Front view

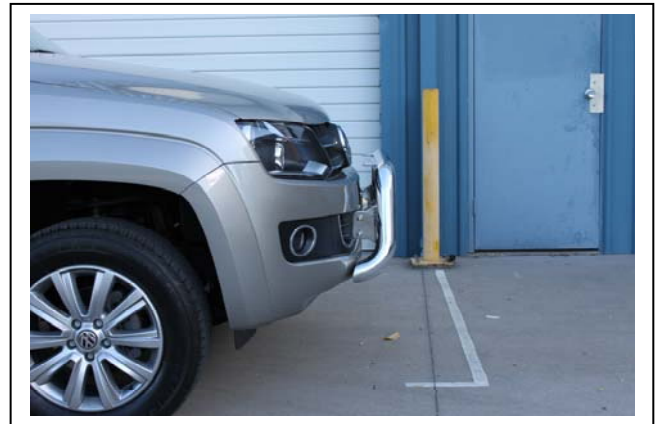


Figure 8: Side view



Figure 9: Front view



Figure 10: Side view



Figure 11: Front view



Figure 12: Side view



**WORLD'S BEST
ALLOY BULLBARS**

East Coast Bullbars (ECB Pty Ltd)

Tel: 07 3897 5700

Fax: 07 3283 1168

ecb@ecb.com.au www.ecb.com.au

29 Snook St
Clontarf QLD 4019
Australia

Po Box 122
Margate QLD 4019
Australia

We value your comments

Dear Fitter,

ECB would like to know how you went with the installation of this product. We value your comment and may need to contact you to clarify some details so please complete your contact details clearly.

We would appreciate if you could complete as many of the following details as possible.

Your Name:	Your contact No.
Product Part No.	Product Invoice No.
Product Description:	Make, model, and year of vehicle:
Product Work Order No.	Company your from/Company product purchased from:

Date of Fitment: ____/____/____

Was the fitting hardware supplied complete?

Yes

No

If no what was not supplied

Did the installation go well?

Yes

No

Please provide comments

Please draw diagrams if you need to.

Post to
Reply Paid 122
PO Box 122
Margate QLD 4019

Fax to
(07) 3283 1168



**WORLD'S BEST
ALLOY BULLBARS**

East Coast Bullbars (ECB Pty Ltd)

Tel: 07 3897 5700

Fax: 07 3283 1168

ecb@ecb.com.au www.ecb.com.au

29 Snook St
Clontarf QLD 4019
Australia

Po Box 122
Margate QLD 4019
Australia



WORLD'S BEST
ALLOY BULLBARS

East Coast Bullbars (ECB Pty Ltd)

Tel: 07 3897 5700

Fax: 07 3283 1168

ecb@ecb.com.au www.ecb.com.au

29 Snook St
Clontarf QLD 4019
Australia

Po Box 122
Margate QLD 4019
Australia

DESPATCH CHECKLIST 8V40SY / NB6V40SY / NBV40SY

Work Order #	
Finish:	
Transport:	
Due Date:	

- 1 – Pair Steel mounting brackets.
- 1 – Bolt Kit.

**See other side off
this page for
photos of all
mounts**



Is this product “the best it can be” Yes _____ / _____
Wrapper's initials / Checker initials
 If **NO** fix before continuing

All parts checked and completed by:

Nut and bolts: _____ Date __/__/__

Order control: _____ Date __/__/__

Final wrap check: _____ Date __/__/__



**WORLD'S BEST
ALLOY BULLBARS**

East Coast Bullbars (ECB Pty Ltd)

Tel: 07 3897 5700

Fax: 07 3283 1168

ecb@ecb.com.au www.ecb.com.au

29 Snook St
Clontarf QLD 4019
Australia

Po Box 122
Margate QLD 4019
Australia

