



**WORLD'S BEST
ALLOY BULLBARS**

East Coast Bullbars (ECB Pty Ltd)

Tel: 07 3897 5700

Fax: 07 3283 1168

ecb@ecb.com.au www.ecb.com.au

29 Snook St
Clontarf QLD 4019
Australia

Po Box 122
Margate QLD 4019
Australia

REPLACES: 13.06.08
REVISED: 28.06.10

8S64SY / NB6S64SY / NBS64SY

FITTING INSTRUCTIONS

SUBARU FORRESTER 03/08on TYPE 8, 63mm SERIES 2 NUDGE BAR and 76MM NUDGE BAR VEHICLE FRONTAL PROTECTION SYSTEM (VFPS) FOR AIR BAG & ADR COMPLIANT VEHICLES

Check installation hardware before commencing.

1. Lift bonnet.
2. Remove bumper. Seven plastic push pull clips from top of grille, two plastic push pull clips and one plastic screw (per side) from under bumper and one plastic centre push clip (per side) from bumper wing in wheel arch. Carefully pull sides of bumper out from vehicle then forward to release the support clips on guard and under headlight. **See figure 1.**
3. Remove under body guard. Two 12mm head bolts at front of guard, one 12mm head bolt in rear of guard in centre and two push pull plastic clips on rear sides of under body guard, behind wheel in inner guard.
4. Using a die grinder, enlarge hole in underside of chassis rail to allow the 3/8 x 1½ bolt on 400mm wire to fit. **See figure 2. NOTE:** Ensure all filings are blown out, and surfaces painted or rust proofed to avoid possible corrosion. Place 3/8 x 1½ bolt and washer on 400mm wire (supplied) into hole and install into top mounting hole in chassis. **See figure 3.** Attach ECB steel brace and secure using 3/8 nut, spring washer and flat washer (supplied). **See figure 4.**
5. Install three ½ x 2 bolts and flat washers (supplied) into lower holes in ECB steel brace. Fit onto bolts, two ECB steel spacer plates (supplied) (per side), single holed plate to front. Front plate is designed to slip into tow hook area snugly, rear plate to align with rear of tow hole in ECB brace plate. **See figure 5.**
6. Fit ECB steel mounting bracket (supplied) over bolts and secure using nuts, spring washers and flat washers (supplied). **See figure 6.**
7. Align mounts. **Tighten all bolts.**
8. Refit bumper cover as per reverse of step 2.
9. Place soft mat or cloth on floor in front of vehicle. Lay ECB protection bar on mat with mounts to vehicle. **See figure 7.**
10. Using 3/8 x 1½ bolts flat washers, spring washers and nuts (supplied), attach ECB protection bar to rear of steel mount. Carefully swing protection bar up onto vehicle and fit 3/8 x 1½ bolts, spring washers, flat washers and 3/8 nut and washer on 300mm wire (supplied) into front holes. **Finger tighten only.**
11. Align ECB protection bar with vehicle. **See figures 8, 10 and 12 for front views, figures 9, 11 and 13 for side views.**
12. **Tighten all bolts.**



East Coast Bullbars (ECB Pty Ltd)

Tel: 07 3897 5700

Fax: 07 3283 1168

ecb@ecb.com.au www.ecb.com.au

WORLD'S BEST
ALLOY BULLBARS

29 Snook St
Clontarf QLD 4019
Australia

Po Box 122
Margate QLD 4019
Australia

13. Place under body guard in position and mark trim area. Using a sharp knife, trim under body guard to fit. See figure 14 for approximate trim. Refit to vehicle.

ENSURE NUMBER PLATE IS CLEARLY VISABLE

Note: When fitting/refitting the licence plate to the vehicle, ensure there is no obstruction to licence plate vision in accordance with local authorities. If required relocate licence plate to an alternate location.

Further VFPS Notes:

- a) Do not attach VFPS to the vehicle using anchorages not intended for this purpose (e.g. engine mounting bolts).
- b) Do not use this product for any vehicle make or model, other than those specified by the VFPS manufacturer.
- c) Do not remove the plaque or label from the VFPS.
- d) Do not modify the structure of the VFPS in any way.
- e) No accessory or fitment should project forward of the VFPS forward profile.
- f) **ENSURE THESE INSTRUCTIONS ARE LEFT WITH VEHICLE OWNER AND/OR OPERATOR.**

IMPORTANT INFORMATION

Periodically check bolts and nuts for correct tightness, especially if travelling on rough roads

FITTING KIT

2 – ECB steel brace plates	6 – 3/8 spring washers
2 – ECB steel front spacer plates (shaped 14mm - 1 hole)	4 – 3/8 nuts
2 – ECB steel rear spacer plates (shaped 14mm - 2 hole)	6 – 1/2 x 2 bolts
2 – ECB steel mounting brackets	12 – 1/2 flat washers
2 – 3/8 x 1 1/2 bolt and washer on 400mm wire	6 – 1/2 spring washers
2 – 3/8 nut and washer on 300mm wire	6 – 1/2 nuts
4 – 3/8 x 1 1/2 bolt	
8 – 3/8 flat washers	



Figure 1: Unclip bumper from guard and light



Figure 2: Die grind hole to allow fitment of bolt and washer on wire



**WORLD'S BEST
ALLOY BULLBARS**

East Coast Bullbars (ECB Pty Ltd)

Tel: 07 3897 5700

Fax: 07 3283 1168

ecb@ecb.com.au www.ecb.com.au

29 Snook St
Clontarf QLD 4019
Australia

Po Box 122
Margate QLD 4019
Australia

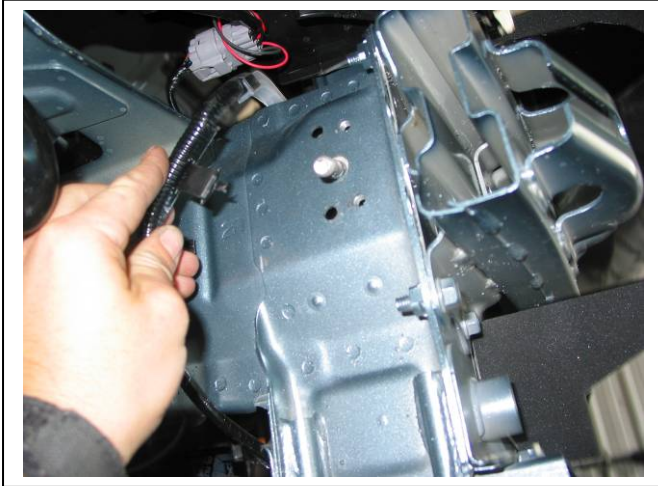


Figure 3: Bolt in top hole in chassis rail. Wiring harness removed.



Figure 4: Top mount and bolt

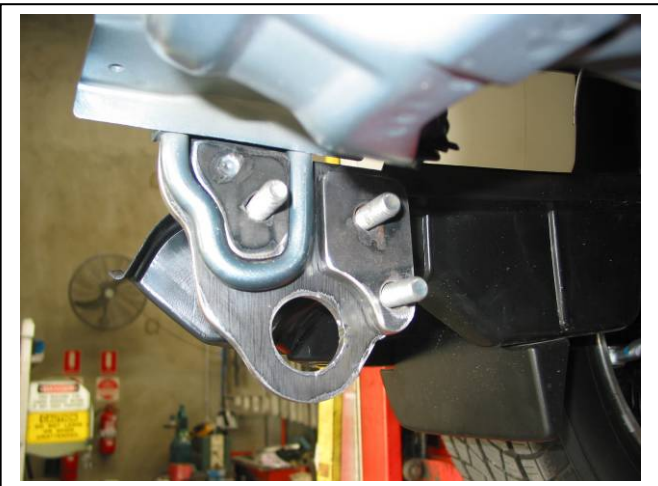


Figure 5: Steel spacer plates fitted. Driver's side shown



Figure 6: Steel mounting bracket fitted to brace.



Figure 7: Protection bar laying on soft mat for fitment



Figure 8: Nudge Bar front view



East Coast Bullbars (ECB Pty Ltd)

Tel: 07 3897 5700

Fax: 07 3283 1168

ecb@ecb.com.au www.ecb.com.au

WORLD'S BEST
ALLOY BULLBARS

29 Snook St
Clontarf QLD 4019
Australia

Po Box 122
Margate QLD 4019
Australia



Figure 9: 76mm Nudge Bar side view



Figure 10: 63mm Series 2 Nudge Bar front view



Figure 11: 63mm Series 2 Nudge Bar side view



Figure 12: Type 8 Loop Bar front view



Figure 13: Type 8 Loop Bar side view



Figure 14: Approximate trim on centre splash guard



**WORLD'S BEST
ALLOY BULLBARS**

East Coast Bullbars (ECB Pty Ltd)

Tel: 07 3897 5700

Fax: 07 3283 1168

ecb@ecb.com.au www.ecb.com.au

29 Snook St
Clontarf QLD 4019
Australia

Po Box 122
Margate QLD 4019
Australia

We value your comments

Dear Fitter,

ECB would like to know how you went with the installation of this product. We value your comment and may need to contact you to clarify some details so please complete your contact details clearly.

We would appreciate if you could complete as many of the following details as possible.

Your Name:	Your contact No.
Product Part No.	Product Invoice No.
Product Description:	Make, model, and year of vehicle:
Product Work Order No.	Company your from/Company product purchased from:

Date of Fitment: ____/____/____

Was the fitting hardware supplied complete?

Yes

No

If no what was not supplied

Did the installation go well?

Yes

No

Please provide comments

Please draw diagrams if you need to.

Post to
Reply Paid 122
PO Box 122
Margate QLD 4019

Fax to
(07) 3283 1168



**WORLD'S BEST
ALLOY BULLBARS**

East Coast Bullbars (ECB Pty Ltd)

Tel: 07 3897 5700

Fax: 07 3283 1168

ecb@ecb.com.au www.ecb.com.au

29 Snook St
Clontarf QLD 4019
Australia

Po Box 122
Margate QLD 4019
Australia



WORLD'S BEST
ALLOY BULLBARS

East Coast Bullbars (ECB Pty Ltd)

Tel: 07 3897 5700

Fax: 07 3283 1168

ecb@ecb.com.au www.ecb.com.au

29 Snook St
Clontarf QLD 4019
Australia

Po Box 122
Margate QLD 4019
Australia

DESPATCH CHECKLIST 8S64SY / NB6S64SY / NBS64SY

Work Order #	
Finish:	
Transport:	
Due Date:	

- 2 – ECB steel brace plates.
- 2 – ECB steel front spacer plates (shaped 14mm – 1 hole)
- 2 – ECB steel rear spacer plates (shaped 14mm – 2 hole)
- 2 – ECB steel mounting brackets.
- 1 – Bolt Kit.

**See other side of
this page for
photos of all
mounts**



Is this product “the best it can be” Yes _____/_____

Wrapper's initials / Checker initials

If NO fix before continuing

All parts checked and completed by:

Nut and bolts: _____ Date __/__/__

Order control: _____ Date __/__/__

Final wrap check: _____ Date __/__/__



East Coast Bullbars (ECB Pty Ltd)

Tel: 07 3897 5700

Fax: 07 3283 1168

ecb@ecb.com.au www.ecb.com.au

29 Snook St
Clontarf QLD 4019
Australia

Po Box 122
Margate QLD 4019
Australia

