



**WORLD'S BEST
ALLOY BULLBARS**

East Coast Bullbars (ECB Pty Ltd)

Tel: 07 3897 5700

Fax: 07 3283 1168

ecb@ecb.com.au www.ecb.com.au

29 Snook St
Clontarf QLD 4019
Australia

Po Box 122
Margate QLD 4019
Australia

8S63SY / NB6S63SY / NBS63SY

REPLACES: 21.07.05

REVISED: 11.07.10

FITTING INSTRUCTIONS

SUBARU FORESTER 7/05 – 2/08 TYPE 8, 63mm SERIES 2 NUDGE BAR & 76mm NUDGE BAR VEHICLE FRONTAL PROTECTION SYSTEM (VFPS) FOR AIR BAG & ADR COMPLIANT VEHICLES

Check installation hardware before commencing.

1. Remove plastic under cover from vehicle. Four plastic clips, four 12mm head bolts. **See figure 1.**
2. Insert 3/8 x 3 1/2 bolt with 10mm flat washer (supplied) through rear mounting hole in steel mounting angle (supplied). Then place 50mm long steel chassis spacer (supplied) over bolt. **See figure 2.**
3. Install to under side of chassis. **See figure 3.** Use 40mm round alloy washer/ 10mm flat washer/ 10mm spring washer and nut (supplied) at top. **See figure 4. DO NOT TIGHTEN.**
4. Bend 3/8 nut/washer on wire (supplied) to shape so as to align with front hole in steel mounting angle and chassis. Insert through large hole in steel mounting angle and chassis. **See figure 5.** Use 3/8 x 1 1/2 bolt, flat washers and spring washers (supplied). **DO NOT TIGHTEN.**
5. Align steel mounting angles both parallel and central to vehicle ensuring the correct measurement so the ECB protection bar will mount on the outside of steel mounting angles. **TIGHTEN IN POSITION** and trim off excess wire to avoid rattling. **See figures 6 & 7.**
6. Hold plastic under cover against steel mounting angles and mark where trimming is needed to fit around steel mounting angles. Trim and reattach to vehicle. **See figures 8 and 9.**
7. Attach protection bar to outside of steel mounting angles. Use 3/8 x 1 1/2 bolt/washer on wire (supplied) to access forward most holes. Use 3/8 x 1 1/2 bolt/nuts and washers (supplied) for rear holes. Align with vehicle, position as high as possible for maximum ground clearance. **See figures 10, 12 and 14 for front view and figures 11, 13 and 15 for side views** for further positioning. **TIGHTEN ALL BOLTS/NUTS**, trim off excess wire.

ENSURE NUMBER PLATE IS CLEARLY VISABLE

Note: When fitting/refitting the licence plate to the vehicle, ensure there is no obstruction to licence plate vision in accordance with local authorities. If required relocate licence plate to an alternate location.

Further VFPS Notes:

- a) Do not attach VFPS to the vehicle using anchorages not intended for this purpose (e.g. engine mounting bolts).
- b) Do not use this product for any vehicle make or model, other than those specified by the VFPS manufacturer.
- c) Do not remove the plaque or label from the VFPS.
- d) Do not modify the structure of the VFPS in any way.
- e) No accessory or fitment should project forward of the VFPS forward profile.
- f) **ENSURE THESE INSTRUCTIONS ARE LEFT WITH VEHICLE OWNER AND/OR OPERATOR.**



East Coast Bullbars (ECB Pty Ltd)

Tel: 07 3897 5700

Fax: 07 3283 1168

ecb@ecb.com.au www.ecb.com.au

29 Snook St
Clontarf QLD 4019
Australia

Po Box 122
Margate QLD 4019
Australia

WORLD'S BEST
ALLOY BULLBARS

IMPORTANT INFORMATION

Periodically check bolts and nuts for correct tightness, especially if travelling on rough roads

FITTING KIT

2 – Steel mounting angles.	2 – 3/8 x 1-1/2 bolts/washers on 250mm wire.
2 – 10NB x 50mm long steel chassis spacers.	2 – 3/8 nuts/washers 200mm wire.
2 - 40 x 6 round alloy washer with 10mm hole in centre.	6 – 3/8 nuts.
2 – 3/8 x 3 1/2 bolts.	12 – 3/8 flat washers.
4 – 3/8 x 1 1/2 bolts.	8 – 3/8 spring washers.



Figure 1



Figure 2 – Passenger side steel mount angle shown



Figure 3 – Drivers side shown

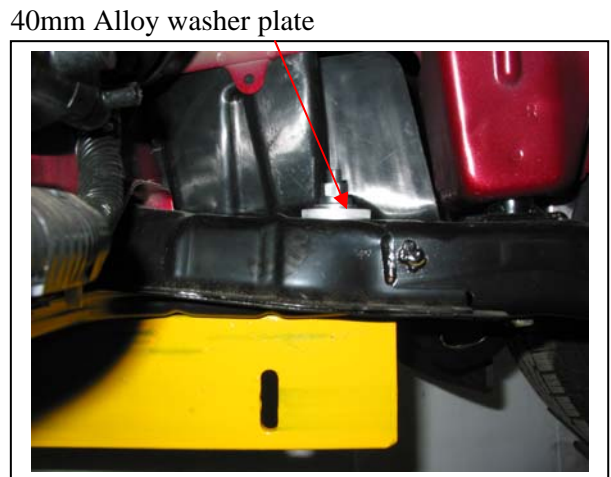


Figure 4 – Drivers side shown



East Coast Bullbars (ECB Pty Ltd)

Tel: 07 3897 5700

Fax: 07 3283 1168

ecb@ecb.com.au www.ecb.com.au

29 Snook St
Clontarf QLD 4019
Australia

Po Box 122
Margate QLD 4019
Australia



Figure 5 – Drivers side shown



Figure 6 – Drivers side shown



Figure 7 – View from passenger side



Figure 8

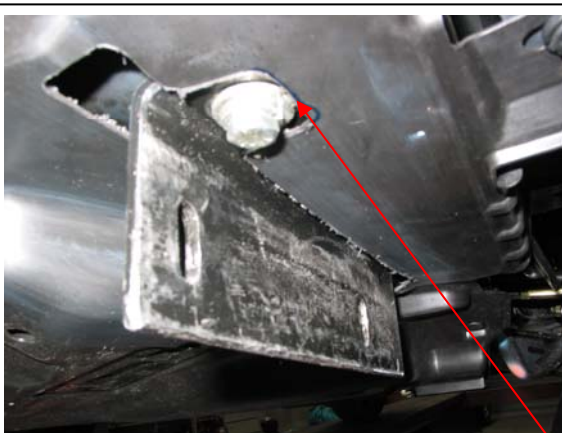


Figure 9 – Passenger side shown

Trim here to
clear bolt head



Figure 10 – Type 8 front view



East Coast Bullbars (ECB Pty Ltd)

Tel: 07 3897 5700

Fax: 07 3283 1168

ecb@ecb.com.au www.ecb.com.au

WORLD'S BEST
ALLOY BULLBARS

29 Snook St
Clontarf QLD 4019
Australia

Po Box 122
Margate QLD 4019
Australia



Figure 11 – Type 8 side view



Figure 12 – 63mm Series 2 Nudge Bar Front view



Figure 13 – 63mm Series 2 Nudge Bar side view



Figure 14 – 76mm Nudge Bar front view

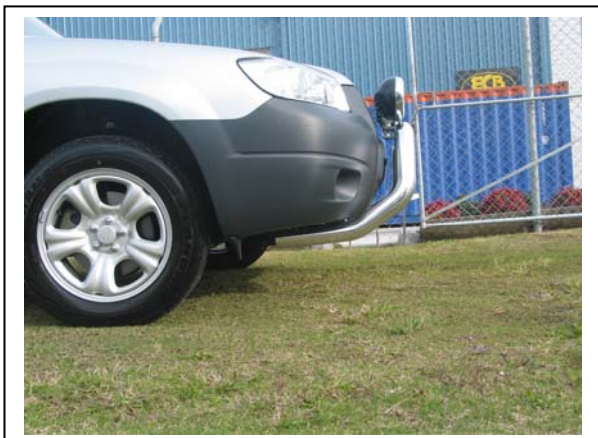


Figure 15 – 76mm Nudge Bar side view



**WORLD'S BEST
ALLOY BULLBARS**

East Coast Bullbars (ECB Pty Ltd)

Tel: 07 3897 5700

Fax: 07 3283 1168

ecb@ecb.com.au www.ecb.com.au

29 Snook St
Clontarf QLD 4019
Australia

Po Box 122
Margate QLD 4019
Australia

We value your comments

Dear Fitter,

ECB would like to know how you went with the installation of this product. We value your comment and may need to contact you to clarify some details so please complete your contact details clearly.

We would appreciate if you could complete as many of the following details as possible.

Your Name:	Your contact No.
Product Part No.	Product Invoice No.
Product Description:	Make, model, and year of vehicle:
Product Work Order No.	Company your from/Company product purchased from:

Date of Fitment: ____/____/____

Was the fitting hardware supplied complete? Yes No

If no what was not supplied

Did the installation go well? Yes No

Please provide comments

Please draw diagrams if you need to.

Post to
Reply Paid 122
PO Box 122
Margate QLD 4019

Fax to
(07) 3283 1168



**WORLD'S BEST
ALLOY BULLBARS**

East Coast Bullbars (ECB Pty Ltd)

Tel: 07 3897 5700

Fax: 07 3283 1168

ecb@ecb.com.au www.ecb.com.au

29 Snook St
Clontarf QLD 4019
Australia

Po Box 122
Margate QLD 4019
Australia



WORLD'S BEST
ALLOY BULLBARS

East Coast Bullbars (ECB Pty Ltd)

Tel: 07 3897 5700

Fax: 07 3283 1168

ecb@ecb.com.au www.ecb.com.au

29 Snook St
Clontarf QLD 4019
Australia

Po Box 122
Margate QLD 4019
Australia

DESPATCH CHECKLIST 8S63SY / NB6S63SY / NBS63SY

Work Order #	
Finish:	
Transport:	
Due Date:	

**See other side of this page for
photos of all mounts**

- 2 – Steel mounting angles.
- 2 – 10NB x 50mm long steel chassis spacers.
- 1 – Bolt Kit.



Is this product “the best it can be” Yes _____ / _____
If NO fix before continuing
Wrapper's initials / Checker initials

All parts checked and completed by:

Nut and bolts: _____ Date __/__/__

Order control: _____ Date __/__/__

Final wrap check: _____ Date __/__/__



**WORLD'S BEST
ALLOY BULLBARS**

East Coast Bullbars (ECB Pty Ltd)

Tel: 07 3897 5700

Fax: 07 3283 1168

ecb@ecb.com.au www.ecb.com.au

29 Snook St
Clontarf QLD 4019
Australia

Po Box 122
Margate QLD 4019
Australia

