



WORLD'S BEST
ALLOY BULLBARS

East Coast Bullbars (ECB Pty Ltd)

Tel: 07 3897 5700

Fax: 07 3283 1168

ecb@ecb.com.au www.ecb.com.au

29 Snook St
Clontarf QLD 4019
Australia

Po Box 122
Margate QLD 4019
Australia

8MA31SY / NB6MA31SY

REPLACES: 11.06.13
REVISED: 05.06.14

**FITTING INSTRUCTIONS
MAZDA CX5 APRIL 2013ON
VEHICLE FRONTAL PROTECTION SYSTEM (VFPS)
FOR AIR BAG & ADR COMPLIANT VEHICLES**

Check installation hardware before commencing.

1. Lift bonnet
2. Remove centre trim from top of bumper by removing two black push-pull clips. Remove four phillips head screws and four black push-pull clips from top of bumper.
3. From front of wheel arch (per side) remove three black push-pull clips, and ten phillips head screws, two black push-pull clips from under side of bumper. Pull centre of under body guard down and remove two black push-pull clips from bumper. Remove one 10 mm head bolt from rear wing (per side). Carefully pull out on rear wing to unclip bumper from guard, pull bumper forward to unclip from headlight. **See figure 1.** Disconnect wiring from fog lights, disconnect bumper parking sensors and unplug headlight washer line. Remove bumper.
4. Remove foam pad and air deflector from bumper support.
5. On drivers side, disconnect wiring harness from intercooler and remove from chassis rail.
6. Place tow hook in position in front of chassis rail. Using tow hook as a guide, trim lower splash tray to allow installation of ECB tow hook (supplied) to front of chassis rail and side of crash can. **See figure 2.**
7. Remove two 14mm head bolts on outside of chassis rail at bumper support join. Using a 18mm drill or die grinder, enlarge outside only of front and rear holes in crash can (per side) to fit chassis spacers. **See figure 3. Blow filings clear and treat all exposed metal with a rust inhibitor.**
8. Install ECB tow hooks onto crash can using original 14mm head bolts into chassis rail, two M8 x 120mm bolts, flat washers and nyloc nuts and chassis spacers. **See figure 4.** Tighten all bolts.
9. Drill rear chassis mount to 10mm, using ECB tow hook as a guide. **See figure 5. Blow filings clear and treat all exposed metal with a rust inhibitor.** Install M10 x 40 bolts, flat washers, spring washers and nuts into drilled holes.
10. Using ECB tow hook as a guide, mark and cut lower plastic inner guard to allow access from under vehicle. **See figure 6.**
11. Refit wiring to intercooler around ECB tow hook. Ensure wiring is clear of all sharp edges to avoid damage.
12. Fit ECB steel mounting brackets onto front of bumper support using inner ECB steel mounting brackets, 3/8 x 4 bolts, flat washers and nyloc nuts and outer rear ECB steel mounting brackets, 3/8 x 3 1/2 bolts, flat washers and nyloc nuts (supplied). Centralise ECB steel mounting brackets to front of vehicle and measure inside of alloy protection bar to set ECB steel mounting bracket in correct position. Align and tighten bolts.
13. Mark and cut foam pad to fit around mounts on bumper reinforcement. **See figure 7.** (Secure with zip-tie if required).
14. Mark and cut air deflector to fit around top of mounts. **See figure 8.** Refit to vehicle.



**WORLD'S BEST
ALLOY BULLBARS**

East Coast Bullbars (ECB Pty Ltd)

Tel: 07 3897 5700

Fax: 07 3283 1168

ecb@ecb.com.au www.ecb.com.au

29 Snook St
Clontarf QLD 4019
Australia

Po Box 122
Margate QLD 4019
Australia

15. Mark and cut grille opening in front bumper for ECB steel mount. **See figure 9.**
16. Remove parking sensors from grille. Carefully file out sensor hole to allow fitment of plastic plug (supplied).
17. Mask centre section of plastic bumper. Using ECB measurements, **See figure 10**, mark plastic bumper for sensor location. Double check location before drilling.
18. Drill pre marked location for sensors to 19mm and using a round file remove furry edge around hole. Fit sensor to plastic bumper. **See figure 11.** Carefully remove wiring and tape on side near fog lights, affix back to bumper after wiring is re- routed to new sensor location.
19. Refit bumper onto vehicle in the reverse steps of step 2 and 3.
20. Fit protection bar onto vehicle using two M10 x 40 bolts, flat washers, spring washers and nuts (per side) (supplied). Align protection bar with vehicle and tighten bolts. **See figures 12 and 14 for front views and figures 13 and 15 for side views**
21. Warning. Test parking sensors for correct operation. Should parking sensors not work correctly, adjustment to protection bar will be required.

ENSURE NUMBER PLATE IS CLEARLY VISABLE

Note: When fitting/refitting the licence plate to the vehicle, ensure there is no obstruction to licence plate vision in accordance with local authorities. If required relocate licence plate to an alternate location.

Further VFPS Notes:

- a) Do not attach VFPS to the vehicle using anchorages not intended for this purpose (e.g. engine mounting bolts).
- b) Do not use this product for any vehicle make or model, other than those specified by the VFPS manufacturer.
- c) Do not remove the plaque or label from the VFPS.
- d) Do not modify the structure of the VFPS in any way.
- e) No accessory or fitment should project forward of the VFPS forward profile.
- f) **ENSURE THESE INSTRUCTIONS ARE LEFT WITH VEHICLE OWNER AND/OR OPERATOR.**

IMPORTANT INFORMATION

Periodically check bolts and nuts for correct tightness, especially if travelling on rough roads

FITTING KIT

1 – Pair ECB Front steel mounts	6 – M10 x 1.25 nuts
1 – Pair ECB tow hooks mounts	4 – M8 x 1.25 x 120 bolts
2 – ECB steel rear inner mounts – IN KIT	8 – M8 flat washers
2 – ECB steel rear outer mounts – IN KIT	4 – M8 nyloc nuts
4 – 10 NB x 3 spacer tubes 94mm long	4 – 3/8 x 3 1/2 bolts
2 – 25mm plastic plugs	4 – 3/8 x 4 bolts
6 – M10 x 40 x 1.25 bolts	8 – 3/8 nyloc nuts
28 – M10 flat washers	4 – 300mm zip ties
6 – M10 spring washers	



East Coast Bullbars (ECB Pty Ltd)

Tel: 07 3897 5700

Fax: 07 3283 1168

ecb@ecb.com.au www.ecb.com.au

29 Snook St
Clontarf QLD 4019
Australia

Po Box 122
Margate QLD 4019
Australia

WORLD'S BEST
ALLOY BULLBARS



Figure 1



Figure 2



Figure 3

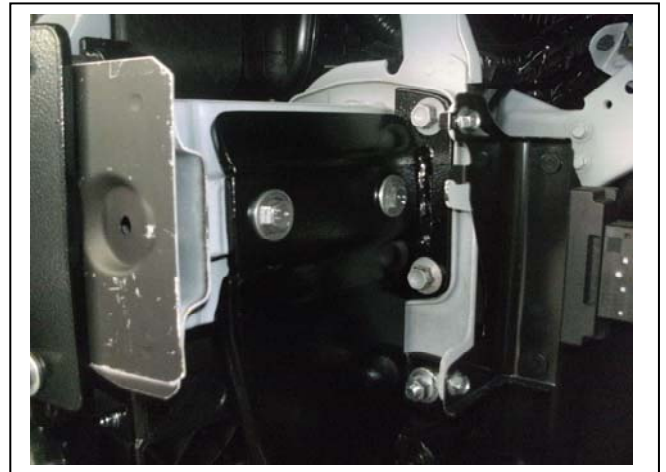


Figure 4

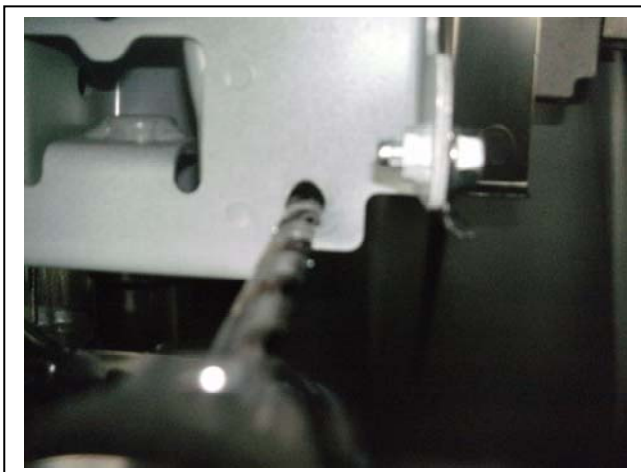


Figure 5



Figure 6



East Coast Bullbars (ECB Pty Ltd)

Tel: 07 3897 5700

Fax: 07 3283 1168

ecb@ecb.com.au www.ecb.com.au

WORLD'S BEST
ALLOY BULLBARS

29 Snook St
Clontarf QLD 4019
Australia

Po Box 122
Margate QLD 4019
Australia



Figure 7



Figure 8



Figure 9

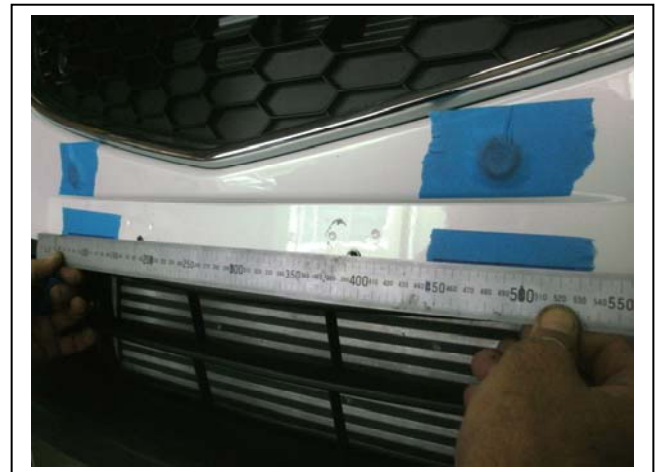


Figure 10a



Figure 10b



Figure 11



East Coast Bullbars (ECB Pty Ltd)

Tel: 07 3897 5700

Fax: 07 3283 1168

ecb@ecb.com.au www.ecb.com.au

29 Snook St
Clontarf QLD 4019
Australia

Po Box 122
Margate QLD 4019
Australia



Figure 12



Figure 13



Figure 14



Figure 15



**WORLD'S BEST
ALLOY BULLBARS**

East Coast Bullbars (ECB Pty Ltd)

Tel: 07 3897 5700

Fax: 07 3283 1168

ecb@ecb.com.au www.ecb.com.au

29 Snook St
Clontarf QLD 4019
Australia

Po Box 122
Margate QLD 4019
Australia

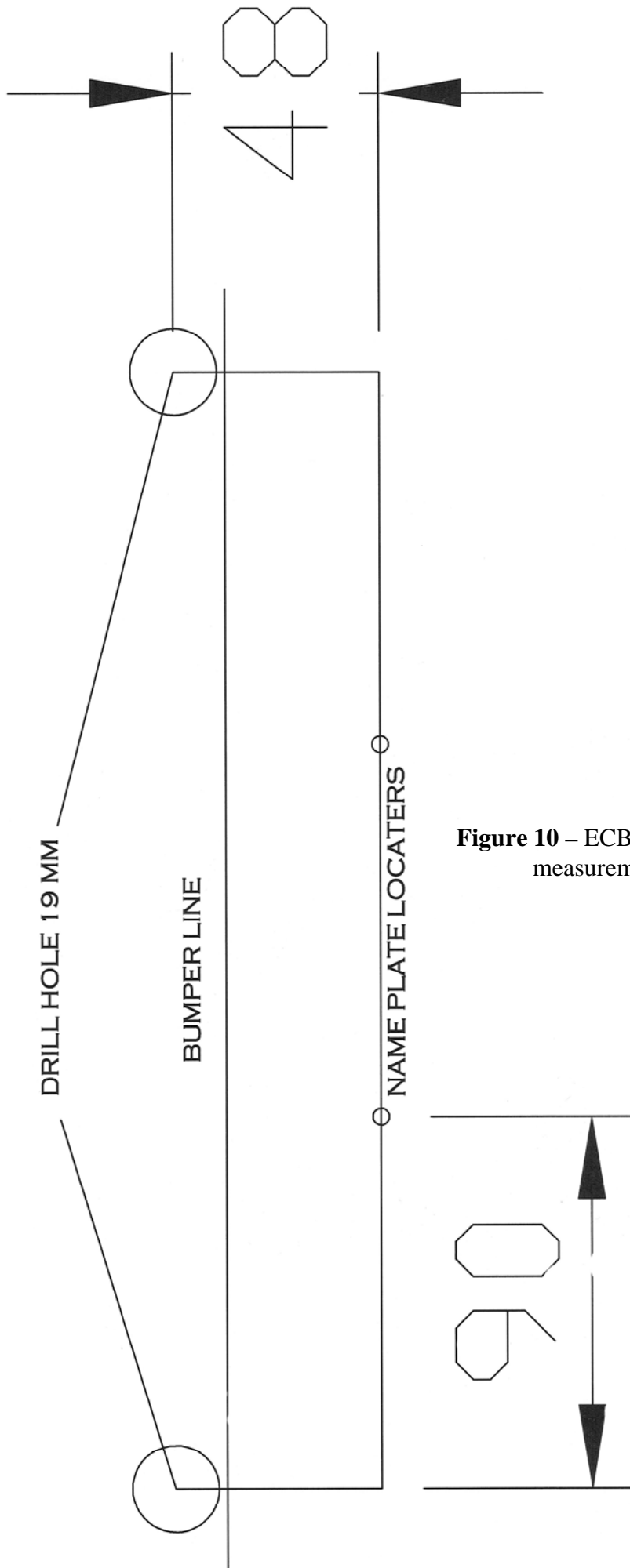


Figure 10 – ECB sensor hole measurements



**WORLD'S BEST
ALLOY BULLBARS**

East Coast Bullbars (ECB Pty Ltd)

Tel: 07 3897 5700

Fax: 07 3283 1168

ecb@ecb.com.au www.ecb.com.au

29 Snook St
Clontarf QLD 4019
Australia

Po Box 122
Margate QLD 4019
Australia



**WORLD'S BEST
ALLOY BULLBARS**

East Coast Bullbars (ECB Pty Ltd)

Tel: 07 3897 5700

Fax: 07 3283 1168

ecb@ecb.com.au www.ecb.com.au

29 Snook St
Clontarf QLD 4019
Australia

Po Box 122
Margate QLD 4019
Australia

We value your comments

Dear Fitter,

ECB would like to know how you went with the installation of this product. We value your comment and may need to contact you to clarify some details so please complete your contact details clearly.

We would appreciate if you could complete as many of the following details as possible.

Your Name:	Your contact No.
Product Part No.	Product Invoice No.
Product Description:	Make, model, and year of vehicle:
Product Work Order No.	Company your from/Company product purchased from:

Date of Fitment: ____/____/____

Was the fitting hardware supplied complete? Yes No

If no what was not supplied

Did the installation go well? Yes No

Please provide comments

Please draw diagrams if you need to.

Post to
Reply Paid 122
PO Box 122
Margate QLD 4019

Fax to
(07) 3283 1168



**WORLD'S BEST
ALLOY BULLBARS**

East Coast Bullbars (ECB Pty Ltd)

Tel: 07 3897 5700

Fax: 07 3283 1168

ecb@ecb.com.au www.ecb.com.au

29 Snook St
Clontarf QLD 4019
Australia

Po Box 122
Margate QLD 4019
Australia



WORLD'S BEST
ALLOY BULLBARS

East Coast Bullbars (ECB Pty Ltd)

Tel: 07 3897 5700

Fax: 07 3283 1168

ecb@ecb.com.au www.ecb.com.au

29 Snook St
Clontarf QLD 4019
Australia

Po Box 122
Margate QLD 4019
Australia

DESPATCH CHECKLIST 8MA31SY / NB6MA31SY

Work Order #		See other side off this page for photos of all mounts
Finish:		
Transport:		
Due Date:		

- OC.....1 – Pair ECB Front steel mounts
- OC.....1 – Pair ECB tow hooks
- BK.....2 – ECB steel rear inner mounts
- BK.....2 – ECB steel rear outer mounts
- BK.....1 – Bolt Kit



Is this product “the best it can be” Yes _____ / _____

Wrapper's initials / Checker initials

If NO fix before continuing

All parts checked and completed by:

Nut and bolts: _____ Date __/__/__

Order control: _____ Date __/__/__

Final wrap check: _____ Date __/__/__



East Coast Bullbars (ECB Pty Ltd)

Tel: 07 3897 5700

Fax: 07 3283 1168

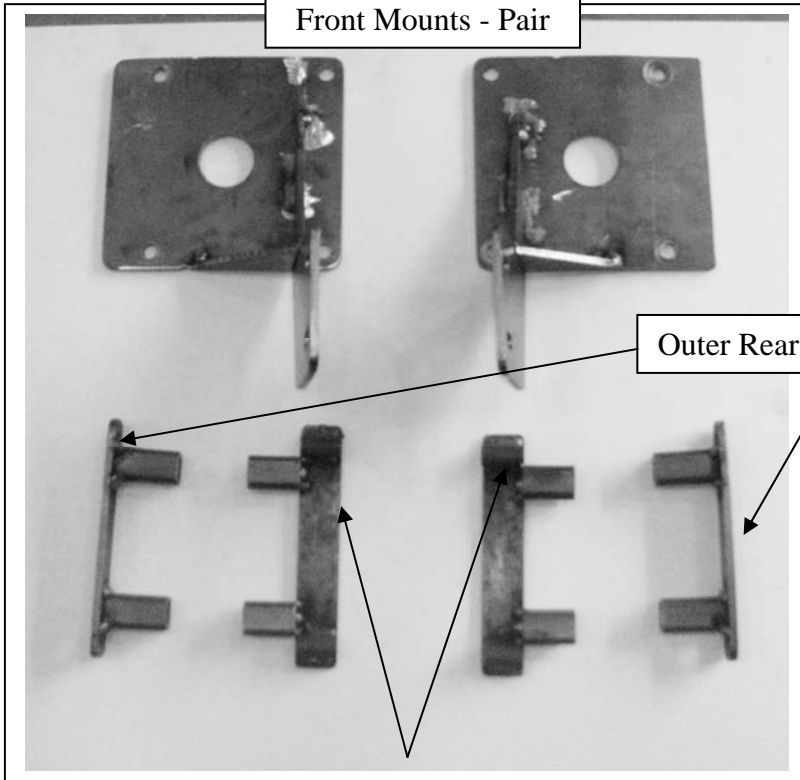
ecb@ecb.com.au www.ecb.com.au

WORLD'S BEST
ALLOY BULLBARS

29 Snook St
Clontarf QLD 4019
Australia

Po Box 122
Margate QLD 4019
Australia

Front Mounts - Pair



Outer Rear mounts - **IN KIT**

Inner Rear mounts - **IN KIT**

Tow Hooks - Pair



_____/_____
Wrapper's initials / Checker initials