



**WORLD'S BEST  
ALLOY BULLBARS**

**East Coast Bullbars (ECB Pty Ltd)**

Tel: 07 3897 5700

Fax: 07 3283 1168

ecb@ecb.com.au www.ecb.com.au

29 Snook St  
Clontarf QLD 4019  
Australia

Po Box 122  
Margate QLD 4019  
Australia

**8H15SY / NB6H15SY / NBH15SY**

REPLACES: 11.08.05

REVISED: 03.07.10

## **FITTING INSTRUCTIONS**

### **VZ COMMODORE TYPE 8, 76mm NUDGE BAR and 63mm SERIES 2 NUDGE BAR VEHICLE FRONTAL PROTECTION SYSTEM (VFPS) FOR AIR BAG & ADR COMPLIANT VEHICLES**

Check installation hardware before commencing.

1. Lift bonnet.
2. Remove plastic bumper cover / grille. Three PK screws along top of grille, two plastic PK plugs under number plate area and two PK self-tappers (each side) at bumper cover side returns. Disconnect fog lights (if fitted). Pull outward at side returns to release clips. **See figure 1.**  
  
**Cross 6 models only:** Remove plastic bumper cover / grille. Three PK screws along top of grille, four PK self-tappers (each side) at bumper cover side returns, three PK screws (each side) at lower outer, and four 10mm head bolts in lower central area. Disconnect fog lights (if fitted). Pull outward at side returns to release clips. **See figure 1.** Remove plastic air dam. Four plastic clips.
3. For SV6, SS and S Ute models remove plastic under guard and plastic air dam from vehicle. Six plastic PK plugs. **See figure 2.**
4. Feed steel mounting system (supplied) onto inside of chassis with steel mounting system locating tabs around lip on bumper cover support. Support steel mounting system in position with trolley jack or similar. **See figures 3 and 4. NOTE:** Move power steering lines clear if necessary.
5. Level steel mounting system off angle brackets on steel mounting system. **See figure 5.**
6. Once level and locating tabs are hard against bumper cover support. Clamp steel mounting system to chassis. **See figure 6.**
7. Drill one top hole (each side) through chassis using steel mounting system holes as a guide. **See figures 7 and 8** note drill access. **NOTE:** When drilling ensure drill chuck does not rub on any power steering and/or air conditioning lines. Treat all exposed metal with a rust inhibitor. Use 3/8 x 1 1/2 bolts, nuts and washers (supplied). Use an impact wrench, long extension bar and socket. **See figure 9. TIGHTEN FULLY.** Remove clamps.
8. Drill one lower hole (each side) through chassis using steel mounting system as a guide. **See figures 10 and 11** note drill access. **NOTE:** When drilling ensure drill chuck does not rub on any power steering and/or air conditioning lines. Treat all exposed metal with a rust inhibitor. Use 3/8 x 1 1/2 bolts, nuts and washers with 40x6 alloy plate (supplied) on inside of chassis over 3/8 x 1 1/2 bolts. **See figure 12.** Use an impact wrench, long extension bar and socket. **See figures 13 and 14** note impact wrench access. **TIGHTEN FULLY.**
9. For SV6, SS and S Ute models trim plastic air dam to fit snug around steel mounting system and refit to vehicle along with plastic under guard. **See figures 15 and 16.**
10. **Cross 6 models.** Trim plastic air dam to fit around steel mounting system and refit to vehicle. **See figures 16 and 17.**
11. For SV6, and SS models remove lower plastic mesh from bumper cover.



**WORLD'S BEST  
ALLOY BULLBARS**

**East Coast Bullbars (ECB Pty Ltd)**

Tel: 07 3897 5700

Fax: 07 3283 1168

ecb@ecb.com.au www.ecb.com.au

29 Snook St  
Clontarf QLD 4019  
Australia

Po Box 122  
Margate QLD 4019  
Australia

12. Refit bumper cover to vehicle. Reconnect fog lights (if fitted).
13. Attach ECB protection bar to outside of steel mounting system angle brackets. Use 3/8 x 1 1/2 bolts, nuts and washers (supplied). **NOTE:** Forward set of holes out on angle bracket is for SV6, SS, and S Ute; one hole in from front is for Executive, Acclaim, SV8 and Cross 6 models. **See figure 18.**
14. Align protection bar as high on steel mounting system as possible and with vehicle. Note front and side positions; **see figures 19, 20, 21, 22, 23 and 24.**
15. **TIGHTEN ALL BOLTS AND NUTS.**

**ENSURE NUMBER PLATE IS CLEARLY VISABLE**

**Note:** When fitting/refitting the licence plate to the vehicle, ensure there is no obstruction to licence plate vision in accordance with local authorities. If required relocate licence plate to an alternate location.

**Further VFPS Notes:**

- a) Do not attach VFPS to the vehicle using anchorages not intended for this purpose (e.g. engine mounting bolts).
- b) Do not use this product for any vehicle make or model, other than those specified by the VFPS manufacturer.
- c) Do not remove the plaque or label from the VFPS.
- d) Do not modify the structure of the VFPS in any way.
- e) No accessory or fitment should project forward of the VFPS forward profile.
- f) **ENSURE THESE INSTRUCTIONS ARE LEFT WITH VEHICLE OWNER AND/OR OPERATOR.**

**IMPORTANT INFORMATION**

Periodically check bolts and nuts for correct tightness, especially if travelling on rough roads

**FITTING KIT**

1 – Steel mounting system.
2 – 40x6 alloy plates with 10mm hole in centre.
8 – 3/8 x 1 1/2 bolts and nuts.
16 – 3/8 flat washers.
8 – 3/8 spring washers.



East Coast Bullbars (ECB Pty Ltd)

Tel: 07 3897 5700

Fax: 07 3283 1168

ecb@ecb.com.au www.ecb.com.au

29 Snook St  
Clontarf QLD 4019  
Australia

Po Box 122  
Margate QLD 4019  
Australia

WORLD'S BEST  
ALLOY BULLBARS

Plastic under guard

Plastic air dam

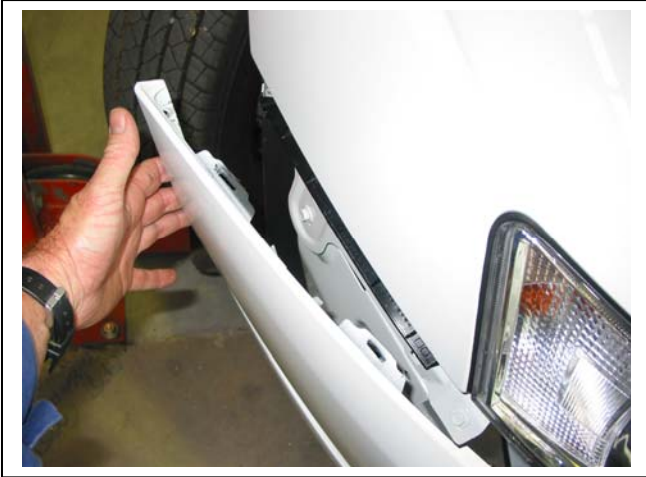


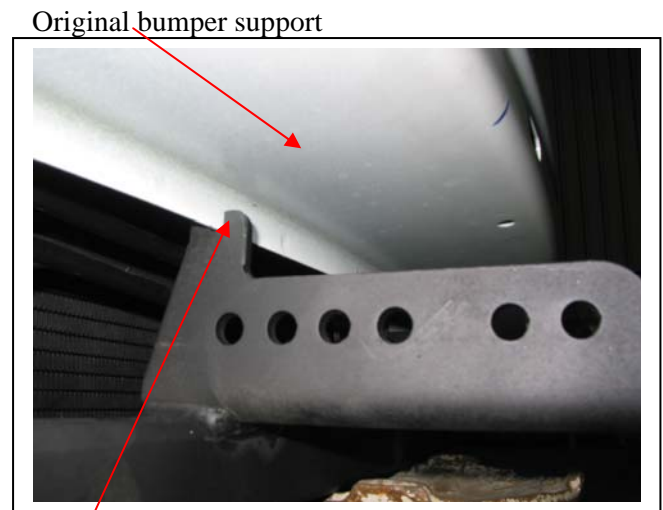
Figure 1 – Executive model shown



Figure 2 – SV6, SS and S Ute Models



Steel mounting system Figure 3



Locating tab Figure 4



Figure 5



Figure 6



**WORLD'S BEST  
ALLOY BULLBARS**

**East Coast Bullbars (ECB Pty Ltd)**

Tel: 07 3897 5700

Fax: 07 3283 1168

ecb@ecb.com.au www.ecb.com.au

29 Snook St  
Clontarf QLD 4019  
Australia

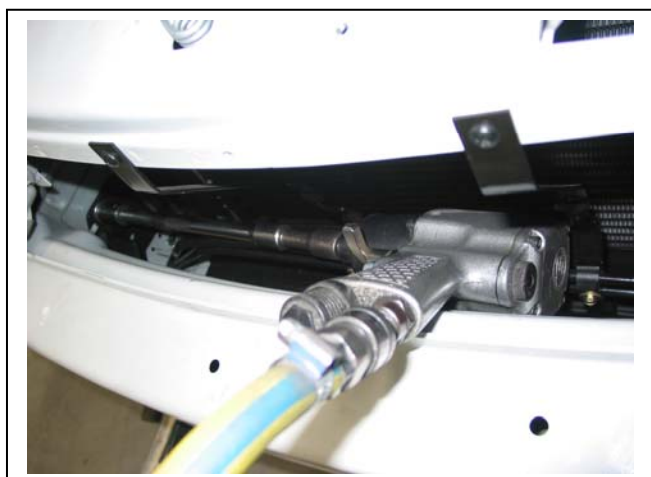
Po Box 122  
Margate QLD 4019  
Australia



**Figure 7**  
Shown drilling drivers side top hole



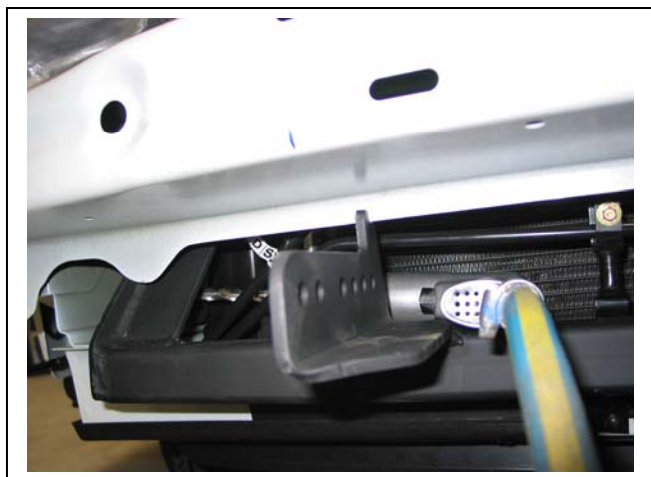
**Figure 8**  
Showing drilling passenger side top hole



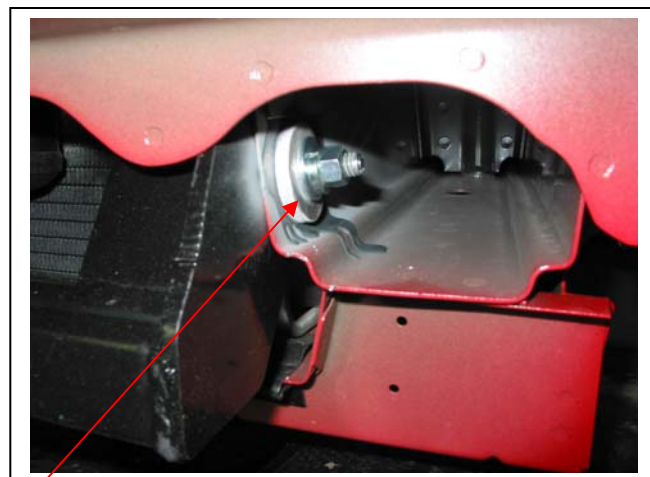
**Figure 9**  
Shown tightening drivers side bolt



**Figure 10**  
Showing drilling passenger side lower hole



**Figure 11**  
Shown drilling drivers side lower hole



40x6 alloy **Figure 12** – Passenger side shown plate





East Coast Bullbars (ECB Pty Ltd)

Tel: 07 3897 5700

Fax: 07 3283 1168

ecb@ecb.com.au www.ecb.com.au

29 Snook St  
Clontarf QLD 4019  
Australia

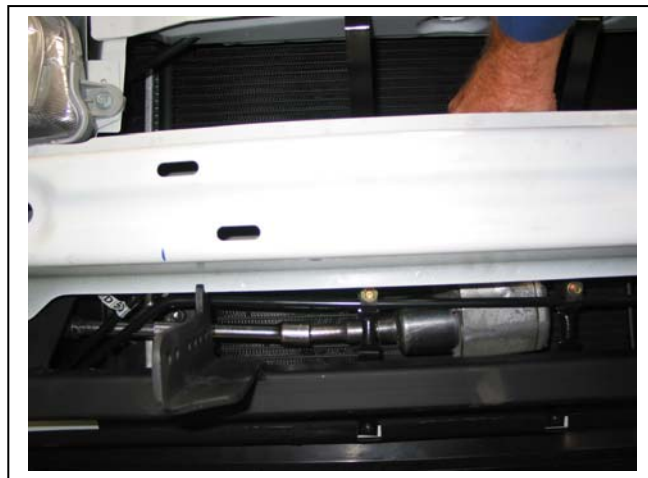
Po Box 122  
Margate QLD 4019  
Australia

WORLD'S BEST  
ALLOY BULLBARS



**Figure 13**

Showing tightening passenger side lower bolt

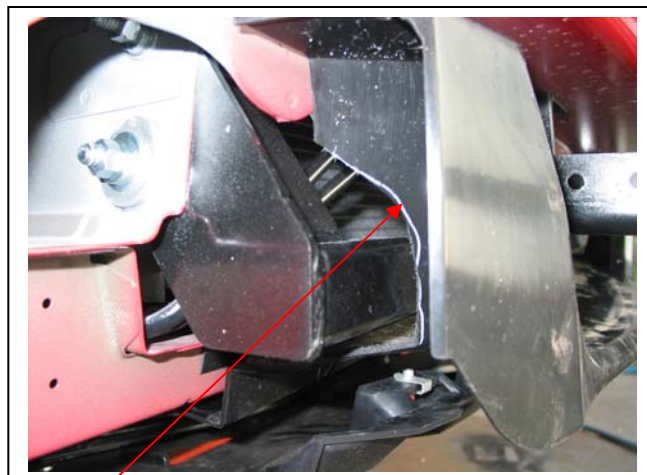


**Figure 14**

Shown tightening drivers side lower bolt



**Figure 15** – SV6, SS and S Ute shown

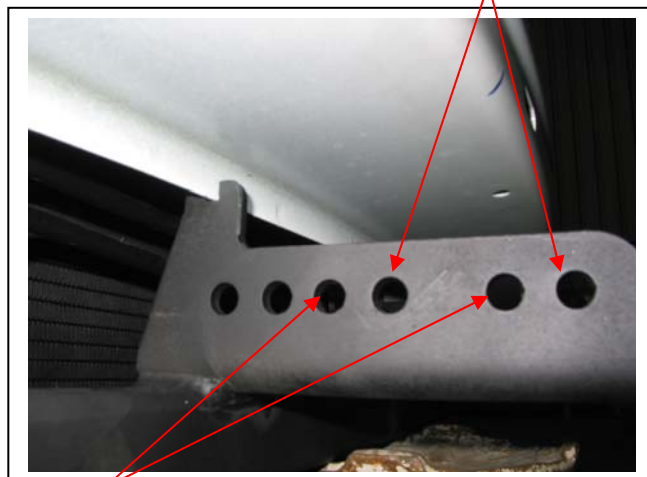


**Figure 16** – Drivers side shown  
Air dam trimmed here

SV6, SS and S Ute mounting holes



**Figure 17** – Cross 6 shown



**Figure 18**  
Executive, Acclaim SV8,  
and Cross 6 Mounting holes





**WORLD'S BEST  
ALLOY BULLBARS**

**East Coast Bullbars (ECB Pty Ltd)**

Tel: 07 3897 5700

Fax: 07 3283 1168

ecb@ecb.com.au www.ecb.com.au

29 Snook St  
Clontarf QLD 4019  
Australia

Po Box 122  
Margate QLD 4019  
Australia



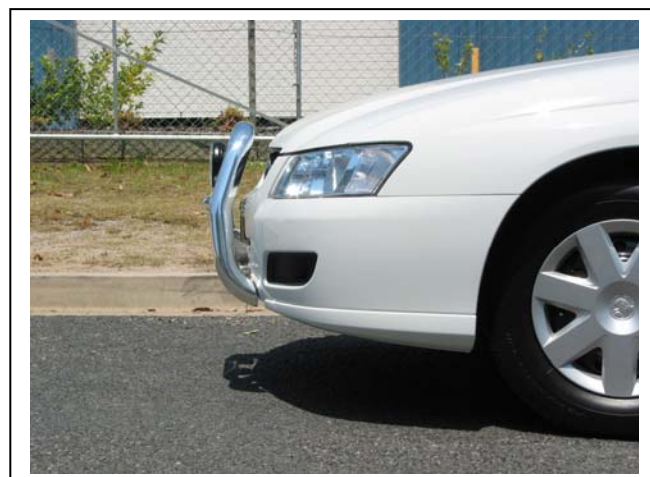
**Figure 19** – Type 8 front view



**Figure 20** – Type 8 side view



**Figure 21** – 63mm Series 2 Nudge Bar front view shown  
Cross 6 shown



**Figure 22** – 63mm Series 2 Nudge Bar side view shown



**Figure 23** – 76mm Nudge Bar front view shown  
Cross 6 shown



**Figure 24** – 76mm Nudge Bar side view shown  
SV6 shown



**WORLD'S BEST  
ALLOY BULLBARS**

**East Coast Bullbars (ECB Pty Ltd)**

Tel: 07 3897 5700

Fax: 07 3283 1168

ecb@ecb.com.au www.ecb.com.au

29 Snook St  
Clontarf QLD 4019  
Australia

Po Box 122  
Margate QLD 4019  
Australia

## *We value your comments*

Dear Fitter,

ECB would like to know how you went with the installation of this product. We value your comment and may need to contact you to clarify some details so please complete your contact details clearly.

We would appreciate if you could complete as many of the following details as possible.

<b>Your Name:</b>	<b>Your contact No.</b>
<b>Product Part No.</b>	<b>Product Invoice No.</b>
<b>Product Description:</b>	<b>Make, model, and year of vehicle:</b>
<b>Product Work Order No.</b>	<b>Company your from/Company product purchased from:</b>

**Date of fitment:** \_\_\_\_/\_\_\_\_/\_\_\_\_

Was the fitting hardware supplied complete?

Yes

No

If no what was not supplied

---

---

---

Did the installation go well?

Yes

No

Please provide comments

---

---

---

Please draw diagrams if you need to.

**Post to**  
Reply Paid 122  
PO Box 122  
Margate QLD 4019

**Fax to**  
(07) 3283 1168



**WORLD'S BEST  
ALLOY BULLBARS**

**East Coast Bullbars (ECB Pty Ltd)**

Tel: 07 3897 5700

Fax: 07 3283 1168

ecb@ecb.com.au [www.ecb.com.au](http://www.ecb.com.au)

29 Snook St  
Clontarf QLD 4019  
Australia

Po Box 122  
Margate QLD 4019  
Australia





WORLD'S BEST  
ALLOY BULLBARS

East Coast Bullbars (ECB Pty Ltd)

Tel: 07 3897 5700

Fax: 07 3283 1168

ecb@ecb.com.au www.ecb.com.au

29 Snook St  
Clontarf QLD 4019  
Australia

Po Box 122  
Margate QLD 4019  
Australia

## DESPATCH CHECKLIST 8H15SY/NB6H15SY / NBH15SY

Work Order #	
Finish:	
Transport:	
Due Date:	

- 1 – Steel mounting system.
- 1 – Bolt kit.

**See other side of  
this page for  
photos of all  
mounts**



Is this product “the best it can be” Yes \_\_\_\_\_ / \_\_\_\_\_  
Wrapper's initials / Checker initials  
 If NO fix before continuing

All parts checked and completed by:

Nut and bolts: \_\_\_\_\_ Date \_\_/\_\_/\_\_

Order control: \_\_\_\_\_ Date \_\_/\_\_/\_\_

Final wrap check: \_\_\_\_\_ Date \_\_/\_\_/\_\_



**WORLD'S BEST  
ALLOY BULLBARS**

**East Coast Bullbars (ECB Pty Ltd)**

Tel: 07 3897 5700

Fax: 07 3283 1168

ecb@ecb.com.au [www.ecb.com.au](http://www.ecb.com.au)

29 Snook St  
Clontarf QLD 4019  
Australia

Po Box 122  
Margate QLD 4019  
Australia

