



East Coast Bullbars (ECB Pty Ltd)

Tel: 07 3897 5700

Fax: 07 3283 1168

ecb@ecb.com.au www.ecb.com.au

29 Snook St
Clontarf QLD 4019
Australia

Po Box 122
Margate QLD 4019
Australia

EAT257SY

REPLACES: EAT253SY
REVISED: 10.01.19

FITTING INSTRUCTIONS

TOYOTA LANDCRUISER 200 SERIES 1-16 ON ECB WINCH COMPATIBLE ECB BIG TUBE™ PROTECTION BAR WITH FOG LIGHTS VEHICLE FRONTAL PROTECTION SYSTEM (VFPS) FOR AIR BAG & ADR COMPLIANT VEHICLES

Check installation hardware before commencing.

Special tools: T30 Torx bit with suitable driver.

1. Check size of templates as size may vary according to printer. Using a sharp pair of scissors, accurately cut templates (supplied) from fitting instructions. Mask vehicle from bumper attachment point around bumper so bumper skin is not marked. Hold templates onto vehicle and mark cut line onto bumper skin. Across centre of bumper, cut between the top of the fog light openings and follow the bumper line. **See figure 1.**
2. Lift bonnet.
3. Remove grille and headlamp cover, seven plastic push pull clips.
4. Remove chrome infills on headlights by pulling infills forward to remove. **See figure 2.**
5. Disconnect wiring harness from camera and radar unit. Remove three bolts from top of grille, apply pressure on lower grille clips whilst pulling forward on grille to remove.
6. Remove plastic splash guards from around tow points; four 10mm head bolts and one plastic 12mm head nut (per side).
7. Remove bumper assembly. Six 10mm head bolts from underside centre of bumper, three T30 Torx head screws from front of wheel arch (per side), and three push pull clips from behind grille. Pull bumper sides outward to release plastic clips from guard edges and plastic bolt clips on inner guard, pull forward and remove bumper.
8. Remove polypropylene infill and aluminium bumper support, three 17mm nuts per side accessed from holes in front of support. Remove four 14mm head bolts (per side) from crash cans. Remove crash cans.
9. Remove tow hooks. Two 17mm bolts (per side).
10. Trim plastic radiator surrounds to allow fitment of ECB steel mounting bracket. **See figures 3 and 4.**
11. Slide ECB winch frame (supplied) onto front of chassis rails. Attach using eight M10 nuts, spring washers and flat washers (supplied). **Finger tighten only. See figure 5.**
12. Using two M12 x 55 bolts, spring washers and flat washers per side (supplied), refit original tow hooks, through ECB steel mounting bracket to vehicle. Centralise mounting bracket to body of vehicle. **Tighten all bolts. See figure 6.**
13. Install fairlead rollers to front of winch frame using M12 x 35 bolts, flat washers, spring washers and nuts.
14. Install control box mount (supplied) to rear of control box using bolts / nuts supplied with winch. **See figure 7.**
Note: There are two control box brackets supplied with this bar. One to fit the Warn Winch (or similar) control



**WORLD'S BEST
ALLOY BULLBARS**

East Coast Bullbars (ECB Pty Ltd)

Tel: 07 3897 5700

Fax: 07 3283 1168

ecb@ecb.com.au www.ecb.com.au

29 Snook St
Clontarf QLD 4019
Australia

Po Box 122
Margate QLD 4019
Australia

box and Mean Mother angle section which is used with the control box mount included with the winch. Wire winch as per manufacturers instructions.

15. Install winch into ECB winch frame using bolts supplied with winch. **See figure 8.** Attach control box to winch using two worm drive hose clamps (supplied) for Warn control box mount and Mean Mother control box mount as per instruction supplied with winch. Install Hook to winch rope. **Tighten all bolts. Test winch for correct operation.**
16. Disconnect indicator and parking lights on vehicle. Install ECB quick click wiring harnesses (supplied) between disconnected harness and indicator / park lights on vehicle. Run wiring out from under lights ensuring clearance from sharp edges and moving parts.
17. Remove the parking sensors from plastic bumper using a small flat blade screwdriver to gently pry open the 4 tabs holding the sensor to the mount and unplug from wiring harness. **Figures 9 and 10.**
18. Remove the wiring loom from the bumper and fit into the protection bar. **See Figure 11.**
19. Install plastic sensor mounts into the holes at the front of the protection bar. **Ensure the large openings on the front and rear part of the sensor mount line up.** Fit parking sensor into the mounts now situated in the protection bar. Should Bumper not have parking sensors, install plastic plugs provided into bullbar holes.
20. Using a jigsaw or similar, cut bumper along marked lines. Attach 3mm clip lock trim to cut line of bumper. Trim clip lock ends to suit end of plastic bumper. **See figure 12.**
21. Zip tie washer line to under side of bumper stiffener with ties supplied. **See figure 13.**
22. Refit bumper cover to vehicle. Connect headlight washers (if fitted).
23. Attach 6mm clip lock trim (supplied) to top centre of ECB protection bar. **See figures 14 & 15.**
24. Fit ECB LED indicator / park lights (supplied) into protection bar as per instructions supplied with the LED indicator kit. **NOTE: Ensure park light is to outside. See figure 16.**
25. Attach ECB fog lights to protection bar. Place M6 x 20 bolts, spring washers (supplied) through light mount from inside and attach nut to top. Slide assembly into light mount in Protection bar and centralize light to hole. **TIGHTEN FIRM ONLY. See figure 17.**
26. Attach protection bar to outside of steel mounting brackets using three M12 x 40 bolts (supplied), washers, spring washers and nuts (per side).
27. Align protection bar with approximately 12mm clearance off bumper. **See figures 18 and 19. Tighten all bolts.**
28. Connect ECB indicator/park/ DRL light. Ensure wiring is routed in such a manner to avoid any sharp edges etc
29. Connect and check operation of ECB indicator/ park lights/ DRL lights, ECB fog lights and parking sensors. **IMPORTANT: Check the sensors capability by turning the car on and selecting drive. If the sensors are triggered with nothing in front of the vehicle, enlarge the sensor holes in the bar slightly. Caution: If sensor holes are enlarged too much the sensor won't be secured properly in the bar.**
30. Using M6 x 20 bolts, flat washers and nyloc nuts (supplied), attach 3mm alloy under body guard to top of end skirt and underside of lower leg of channel. **Tighten all bolts.**



East Coast Bullbars (ECB Pty Ltd)

Tel: 07 3897 5700

Fax: 07 3283 1168

ecb@ecb.com.au www.ecb.com.au

29 Snook St
Clontarf QLD 4019
Australia

Po Box 122
Margate QLD 4019
Australia

31. Pushing inner guard into position in wheel arch, secure plastic guard liner to under body guard with self-drilling screws supplied. **See figures 20 and 21.**
32. On passengers side only: using under body guard as a guide and pushing inner guard up into wheel arch opening, drill a 6 mm hole at front of suspension arm. **NOTE:** Bolt must be placed in hole from rear of vehicle. Nut must be on top to prevent from rubbing on suspension parts. **See figure 22.**
33. Trim inner guards using a sharp knife or scissors or similar. **See figures 23 and 24.**

ENSURE NUMBER PLATE IS CLEARLY VISIBLE

Note: When fitting/refitting the licence plate to the vehicle, ensure there is no obstruction to licence plate vision in accordance with local authorities. If required relocate licence plate to an alternate location.

Further VFPS Notes:

- a) Do not attach VFPS to the vehicle using anchorages not intended for this purpose (e.g. engine mounting bolts).
- b) Do not use this product for any vehicle make or model, other than those specified by the VFPS manufacturer.
- c) Do not remove the plaque or label from the VFPS.
- d) Do not modify the structure of the VFPS in any way.
- e) No accessory or fitment should project forward of the VFPS forward profile.
- f) **ENSURE THESE INSTRUCTIONS ARE LEFT WITH VEHICLE OWNER AND/OR OPERATOR.**

IMPORTANT INFORMATION

Periodically check bolts and nuts for correct tightness, especially if travelling on rough roads

FITTING KIT

1 – ECB Winch frame	15 – M6 x 20mm bolts
1 – Pair ECB side under body guards	24 – M6 flat washers
2 – 117 to 140mm worm drive hose clamps	11 – M6 nyloc nuts
1 – Warn bracket (WIN_CONT_B4MS) – IN KIT	2 – M6 nuts
1 – Mean Mother bracket (MOTHERCB_B4MS) – IN KIT	1 – ECB LED Indicator / Park light kit (ICLED105ECB)
4 – M12 x 1.25 x 55mm bolts	1 – 1 - Quick Click Ind /DRL/ Park kit (IC15TOLCIPDH)
6 – M12 x 1.25 x 40mm bolts	1 – ECB fog lights
2 – M12 x 1.25 x 35mm bolts	1 – Quick click Fog kit (IC10D40S1004ECBH)
24 – M12 flat washers	2 – ECB fog light trims
12 – M12 spring washers	2 – 27mm black plastic plugs
12 – M12 x 1.25 nuts	1 – 2100mm length, 6mm clip lock trim
8 – M10 flat washers	1 – 750mm length, 6mm clip lock trim
8 – M10 spring washers	2 – 550mm lengths, 3mm clip lock trim
8 – M10 x 1.25 nuts	10 – 300mm zip ties



East Coast Bullbars (ECB Pty Ltd)

Tel: 07 3897 5700

Fax: 07 3283 1168

ecb@ecb.com.au www.ecb.com.au

29 Snook St
Clontarf QLD 4019
Australia

Po Box 122
Margate QLD 4019
Australia

WORLD'S BEST
ALLOY BULLBARS



Figure 1: Approximate cut line on vehicle.



Figure 2: Chrome infill to remove.

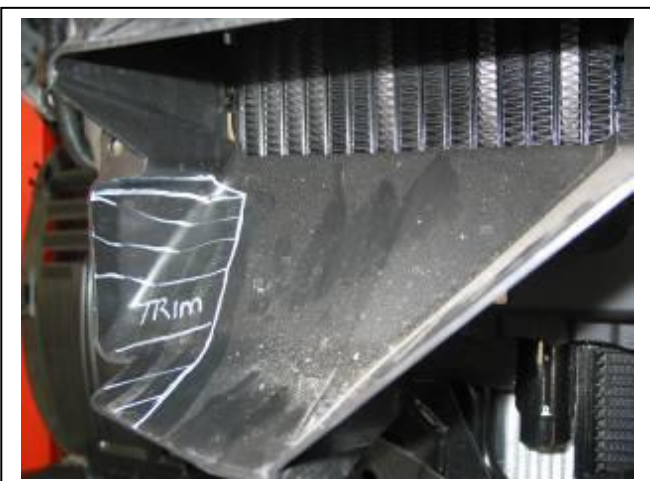


Figure 3: Approximate trim on drivers side shroud.



Figure 4: Approximate trim on passengers side shroud.



Figure 5: Three bolts to crash can assembly.

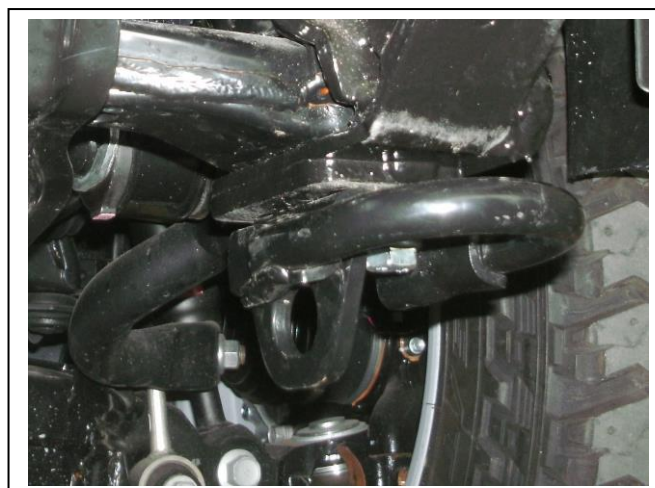


Figure 6: Bolts through tow hook assemblies.



East Coast Bullbars (ECB Pty Ltd)

Tel: 07 3897 5700

Fax: 07 3283 1168

ecb@ecb.com.au www.ecb.com.au

WORLD'S BEST
ALLOY BULLBARS

29 Snook St
Clontarf QLD 4019
Australia

Po Box 122
Margate QLD 4019
Australia



Figure 7: Control box mount installed.



Figure 8: Warn Winch fitted for photo.



Figure 9: Remove parking sensor.



Figure 10: Remove parking sensor mounts.

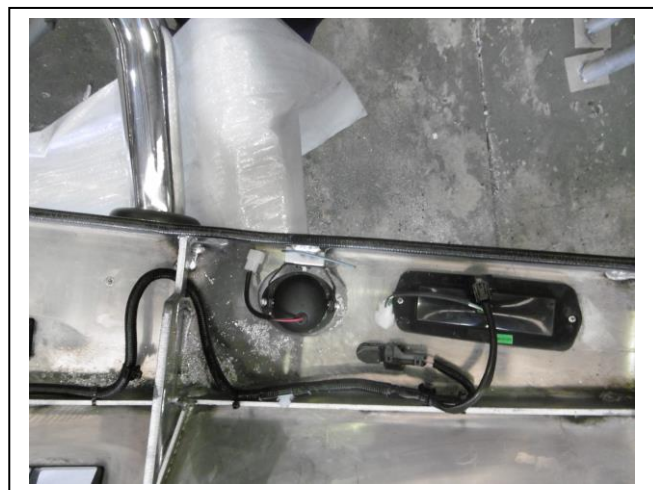


Figure 11: Fit wiring harness.

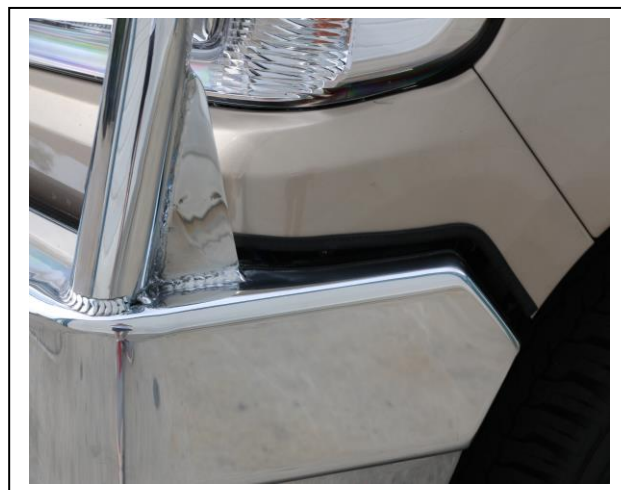


Figure 12: 3mm clip lock, trimmed to suit rear of cut.



East Coast Bullbars (ECB Pty Ltd)

Tel: 07 3897 5700

Fax: 07 3283 1168

ecb@ecb.com.au www.ecb.com.au

WORLD'S BEST ALLOY BULLBARS

29 Snook St
Clontarf QLD 4019
Australia

Po Box 122
Margate QLD 4019
Australia

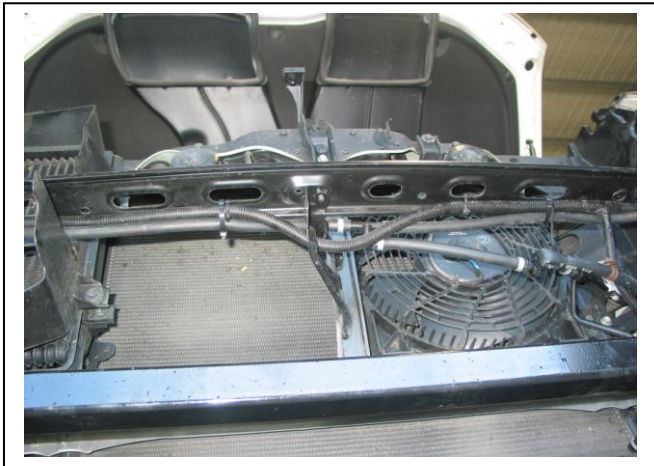


Figure 13: Headlight washer loom attachment under bumper stiffener.

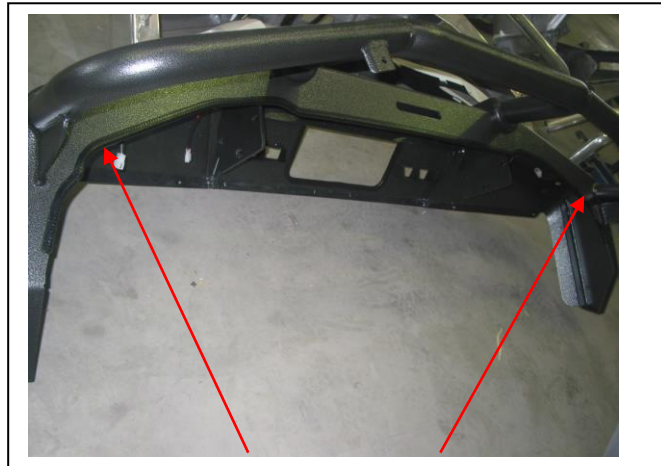


Figure 14: 6mm clip lock trim top view.



Figure 15: 6mm clip lock trim end trim.

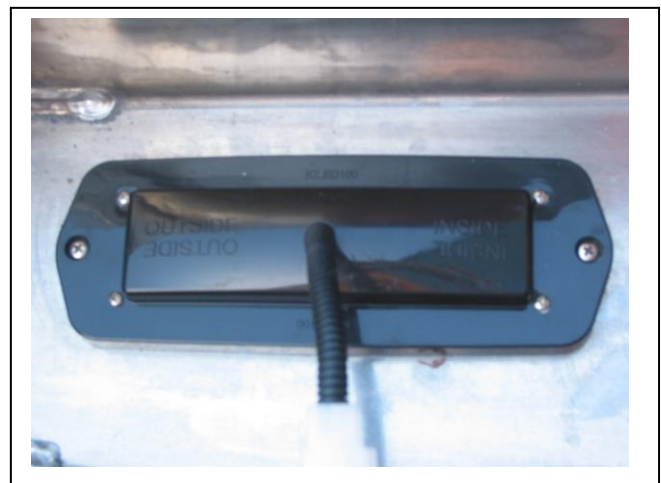
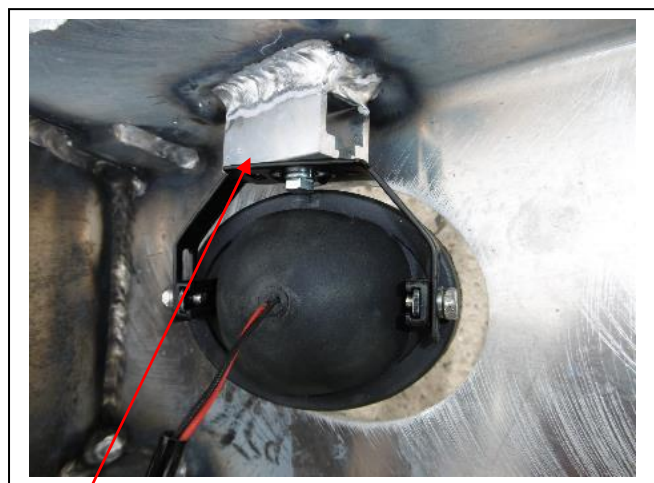


Figure 16: Indicator/Park/DRL.



M6 bolt.

Figure 17



Figure 18: Protection bar side view.



East Coast Bullbars (ECB Pty Ltd)

Tel: 07 3897 5700

Fax: 07 3283 1168

ecb@ecb.com.au www.ecb.com.au

29 Snook St
Clontarf QLD 4019
Australia

Po Box 122
Margate QLD 4019
Australia

WORLD'S BEST
ALLOY BULLBARS



Figure 19: Protection bar front view.



Figure 20: Drivers side guard liner trim line.



Figure 21: Passenger side guard liner trim line.



Figure 22: Passenger side suspension guard.



Figure 23: Passenger side guard trimmed.



Figure 24: Drivers side guard trimmed.



**WORLD'S BEST
ALLOY BULLBARS**

East Coast Bullbars (ECB Pty Ltd)

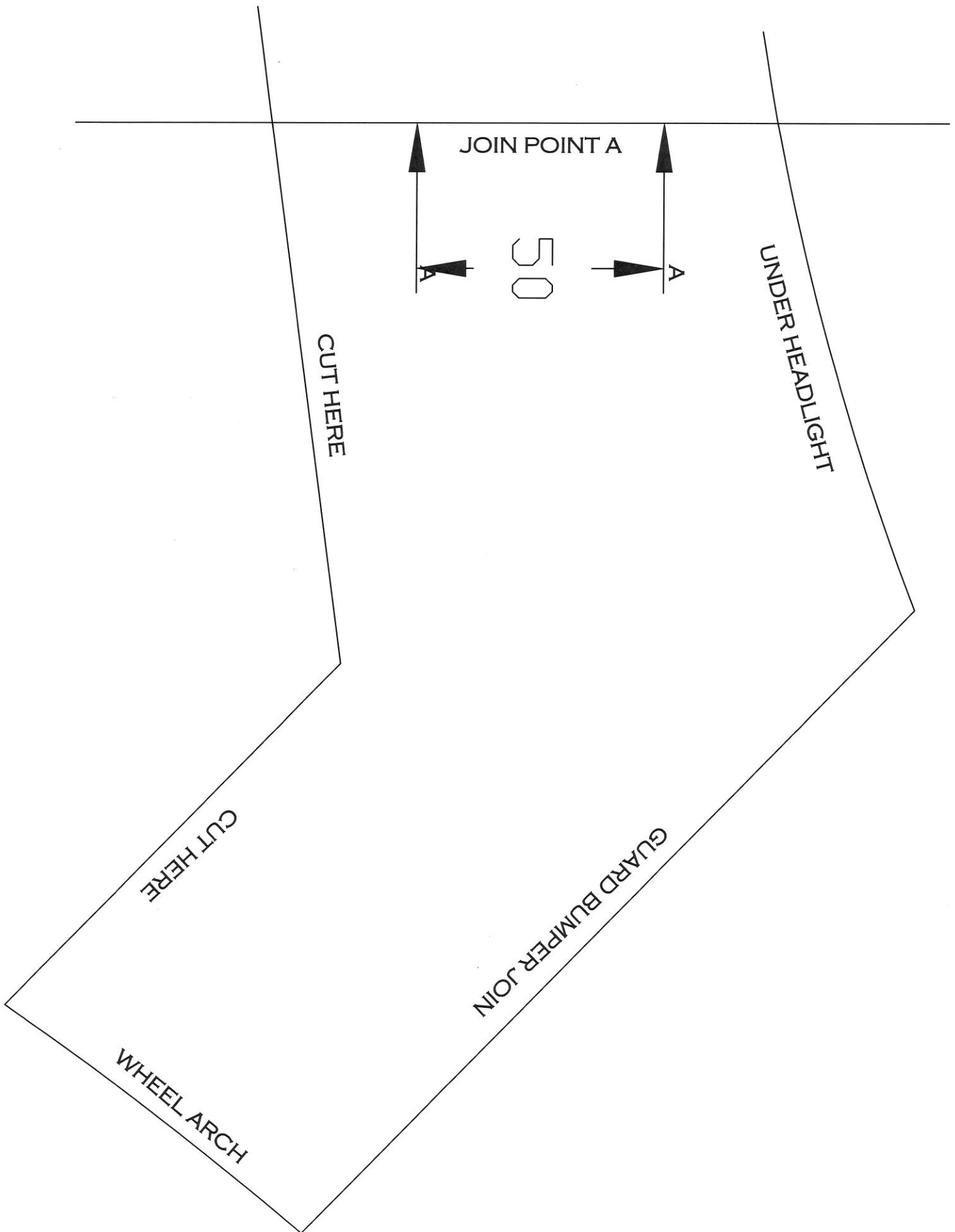
Tel: 07 3897 5700

Fax: 07 3283 1168

ecb@ecb.com.au www.ecb.com.au

29 Snook St
Clontarf QLD 4019
Australia

Po Box 122
Margate QLD 4019
Australia





**WORLD'S BEST
ALLOY BULLBARS**

East Coast Bullbars (ECB Pty Ltd)

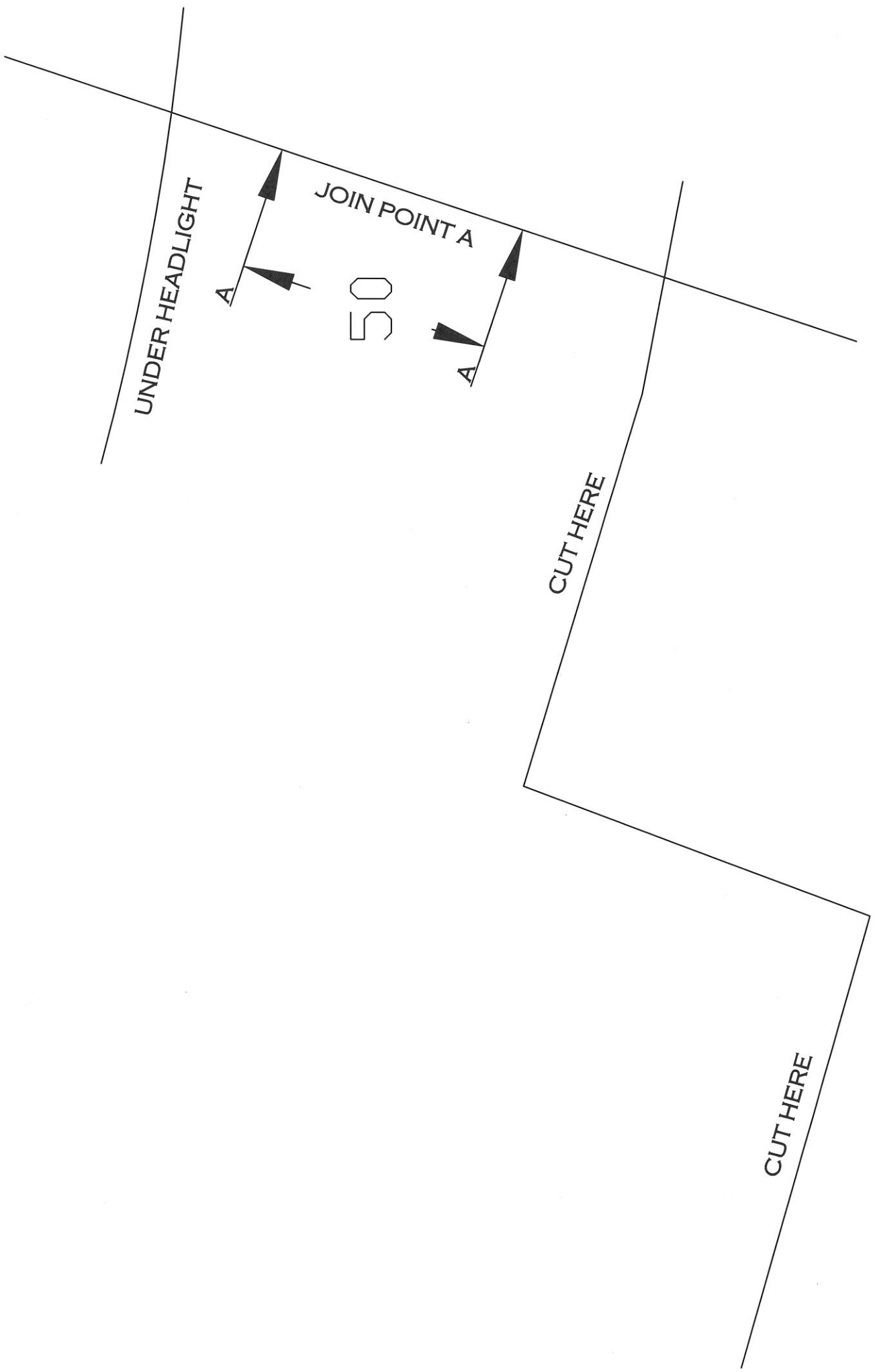
Tel: 07 3897 5700

Fax: 07 3283 1168

ecb@ecb.com.au www.ecb.com.au

29 Snook St
Clontarf QLD 4019
Australia

Po Box 122
Margate QLD 4019
Australia





**WORLD'S BEST
ALLOY BULLBARS**

East Coast Bullbars (ECB Pty Ltd)

Tel: 07 3897 5700

Fax: 07 3283 1168

ecb@ecb.com.au www.ecb.com.au

29 Snook St
Clontarf QLD 4019
Australia

Po Box 122
Margate QLD 4019
Australia



**WORLD'S BEST
ALLOY BULLBARS**

East Coast Bullbars (ECB Pty Ltd)

Tel: 07 3897 5700

Fax: 07 3283 1168

ecb@ecb.com.au www.ecb.com.au

29 Snook St
Clontarf QLD 4019
Australia

Po Box 122
Margate QLD 4019
Australia

We value your comments

Dear Fitter,

ECB would like to know how you went with the installation of this product. We value your comment and may need to contact you to clarify some details so please complete your contact details clearly.

We would appreciate if you could complete as many of the following details as possible.

Your Name:	Your contact No.
Product Part No.	Product Invoice No.
Product Description:	Make, model, and year of vehicle:
Product Work Order No.	Company your from/Company product purchased from:

Date of Fitment: ____/____/____

Was the fitting hardware supplied complete? Yes No

If no what was not supplied

Did the installation go well? Yes No

Please provide comments

Please draw diagrams if you need to.

Post to
Reply Paid 122
PO Box 122
Margate QLD 4019

Fax to
(07) 3283 1168



**WORLD'S BEST
ALLOY BULLBARS**

East Coast Bullbars (ECB Pty Ltd)

Tel: 07 3897 5700

Fax: 07 3283 1168

ecb@ecb.com.au www.ecb.com.au

29 Snook St
Clontarf QLD 4019
Australia

Po Box 122
Margate QLD 4019
Australia



WORLD'S BEST ALLOY BULLBARS

East Coast Bullbars (ECB Pty Ltd)

Tel: 07 3897 5700

Fax: 07 3283 1168

ecb@ecb.com.au www.ecb.com.au

29 Snook St
Clontarf QLD 4019
Australia

Po Box 122
Margate QLD 4019
Australia

DESPATCH CHECKLIST EAT257SY

Work Order #		See other side of this page for photos of all mounts
Finish:		
Transport:		
Due Date:		

- OC____1 – Steel winch frame
- OC____1 – Passengers Side underbelly guard (EAT250SY_UP3AL)
- OC____1 – Drivers Side underbelly guard (EAT250SY_UD3AL)
- OC____2 – ECB Overriders
- OC____3 – 6mm air vents
- BK____1 – Bolt Kit
- BK____1 – Warn control box mount (WIN_CONT_B4MS)
- BK____1 – Mean Mother winch control bracket (MOTHERCB_B4MS)
- BK____1 – Pair ECB LED Indicator / Park Lights / DRL - **ICLED105ECB**
- BK____1 – Quick Click Indicator / park light Harness (**IC15TOLCIPDH**)
- BK____1 – 2100mm length 6mm clip lock trim
- BK____1 – 750mm length 6mm clip lock trim
- BK____2 – 550mm lengths 3mm clip lock trim
- WR____2 – ECB Overriders - **FITTED TO BAR**
- WR____3 – 6mm Air vents - **FITTED TO BAR**
- WR____ Steel winch frame - **FITTED TO BAR**

_____/_____
Wrapper's initials / Checker initials



Is this product “the best it can be” Yes
If NO fix before continuing

All parts checked and completed by:

Nut and bolts: _____ Date __/__/__

Order control: _____ Date __/__/__

Final wrap check: _____ Date __/__/__



**WORLD'S BEST
ALLOY BULLBARS**

East Coast Bullbars (ECB Pty Ltd)

Tel: 07 3897 5700

Fax: 07 3283 1168

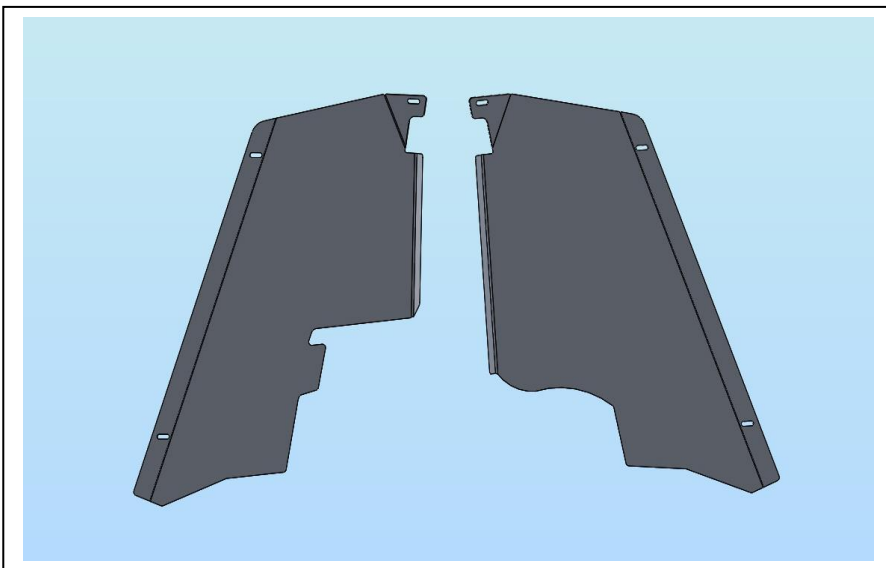
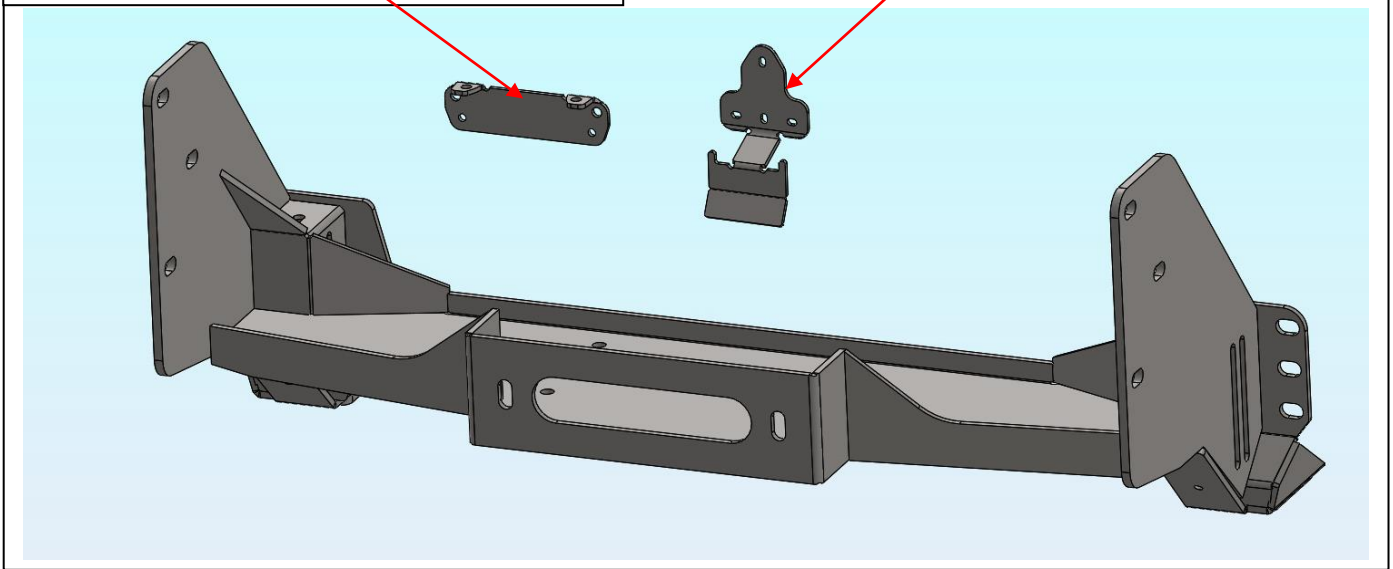
ecb@ecb.com.au www.ecb.com.au

29 Snook St
Clontarf QLD 4019
Australia

Po Box 122
Margate QLD 4019
Australia

1 – Warn control box mount (WIN_CONT_B4MS) –
IN KIT

1 – Mean Mother winch control bracket (MOTHERCB_B4MS) –
IN KIT



_____/_____
Wrapper's initials / Checker initials