



**WORLD'S BEST
ALLOY BULLBARS**

East Coast Bullbars (ECB Pty Ltd)

Tel: 07 3897 5700

Fax: 07 3283 1168

ecb@ecb.com.au www.ecb.com.au

29 Snook St
Clontarf QLD 4019
Australia

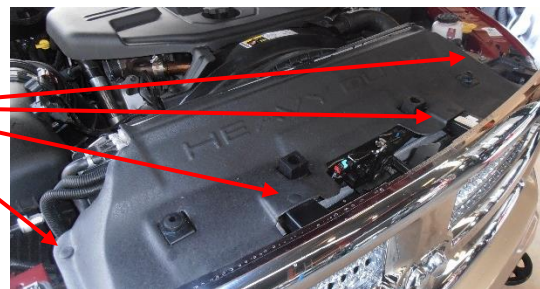
Po Box 122
Margate QLD 4019
Australia

BULLBAR WINCH COMPATIBLE
FITTING INSTRUCTIONS
TO SUIT: 2016 + DODGE RAM
PART NUMBER: B3DO0009SY

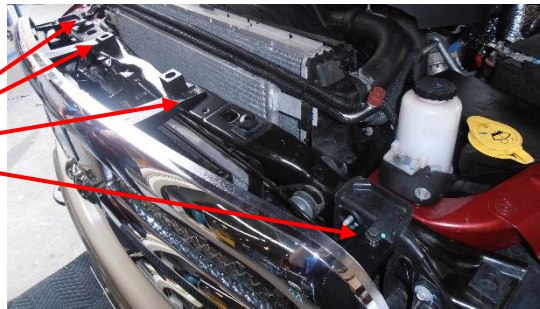
Step 1.
Park vehicle on level ground and apply park brake.



Step 2.
Release 4 plastic push-in fasteners and remove upper radiator heat shield. Retain heat shield and fasteners for re-fitting.



Step 3.
Remove radiator grill by releasing 4 screws along the top and pulling the grill forward. Retain grill and fasteners for re-fitting.



Step 4.
From behind the bumper, remove upper bolt from inner splash guard each side also locate the park light and driving light plugs and disconnect.



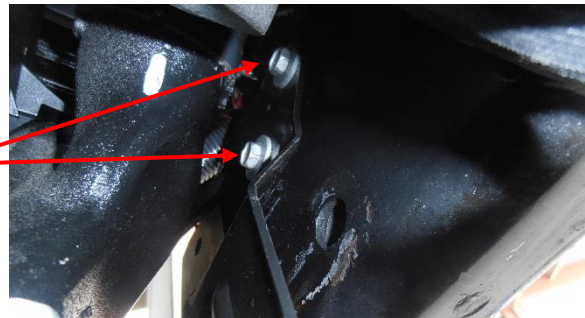
Step 5.
From underneath the bumper, remove the 2 lower nuts from each side that retain the outer bumper section.
Discard the nuts.



Step 6.
Facing the front of the bumper, access and remove the 2 nuts retaining the outer bumper section each side.
Remove the foglight / Sensor wiring harness and the sensors from the inside of the bumper and retain for re-fitting.
Discard the nuts and the bumper.



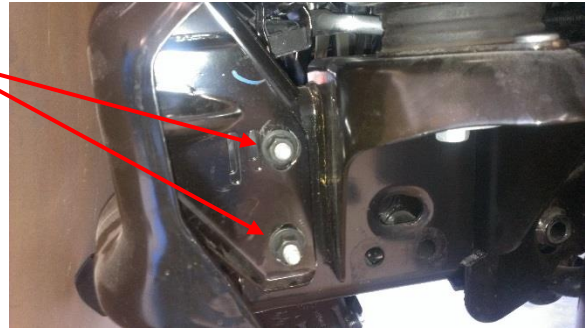
Step 7.
Remove the rubber air dam from the front of the inter-cooler and discard.
Release the inter-cooler mounts located on the inside of each chassis rail.



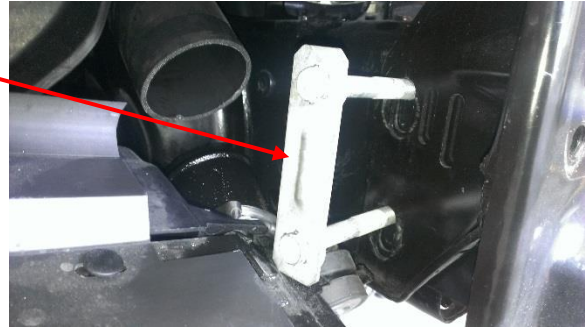
Step 8.
Release the inter-cooler flexi-tube clamps.
Remove the inter-cooler assembly.
Retain inter-cooler assembly and bolts for re-fitting.



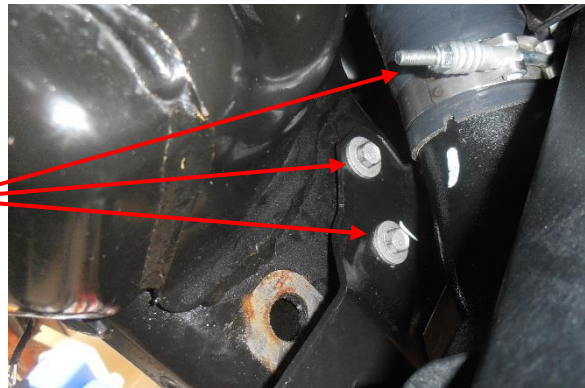
Step 9.
Release the bumper chassis mount fastener nuts and discard.



Step 10.
Remove the original 2-bolt plates from each chassis rail allowing the OE chassis mounts to be removed.
Discard fasteners and OE chassis mounts.



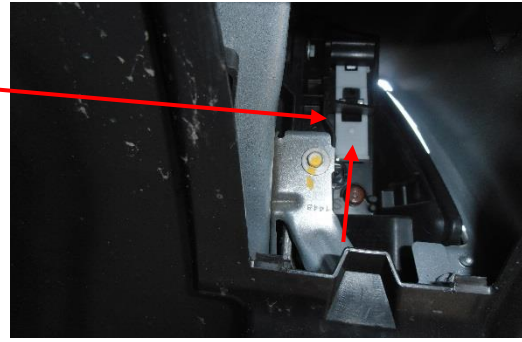
Step 11.
Re-fit the inter-cooler assembly, flexi-tubes, flexi-tube clamps and fasten the inter-cooler mounts using the original fasteners.
Be sure to tighten all clamps and fasteners.



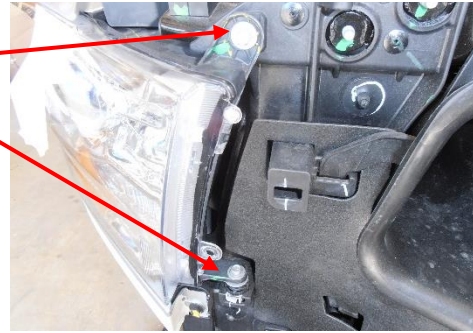
Step 12.
Locate and open flap under the inner guards directly behind the head lights.
Locate the white plastic retaining clip at the rear of the head light assembly.



Step 13.
Push the white plastic retaining clip upwards to release the rear of each head light assembly.



Step 14.
Remove bolts from upper inner and lower inner edges of the head light and remove each headlight assembly by pulling forward. Retain headlight assemblies and fasteners for re-fitting.



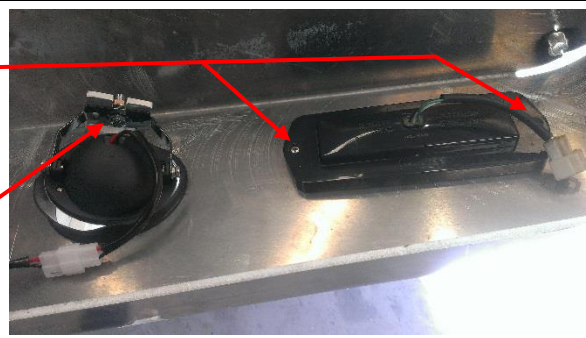
Step 15.
Locate Indicator/park light and drive lights wiring, attach the patch harnesses each side using the supplied scotch locks and use insulation tape to seal the scotch connectors. Feed the patch harness wiring inside the body down towards the ground. Refit head light assemblies using original fasteners.



Step 16.
Connect the supplied fog light wiring to the vehicles original fog light wiring using the scotch locks supplied and use insulation tape to seal all connectors. Extend the outside sensor harness use 3-core wiring and solder joiners (supplied)

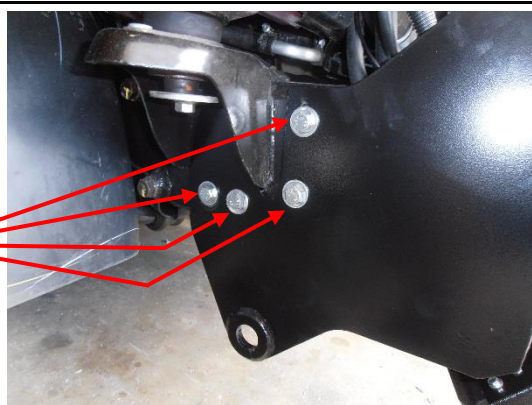


Step 17.
Fit the Indicator/park light assemblies into the Bull bar channel using the screws supplied in the Indicator/park light assemblies box.
Fit the Drive light assemblies onto the mounting tabs welded inside the Bull bar channel using the supplied M8 fasteners.
Fit the pinch mold supplied to the upper rear edge of the Bull bar.
Fit the pinch mold supplied to the outer edge of the fairlead roller recess.

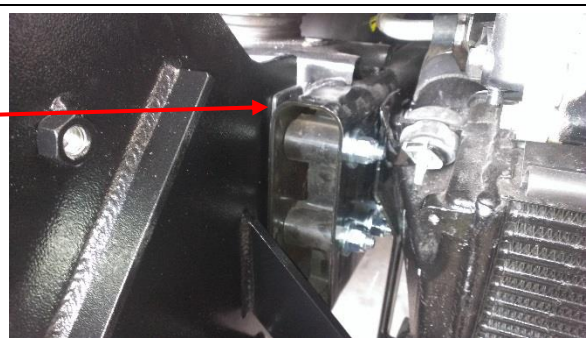


Step 18.
Position Chassis mount/Winch frame assembly centrally on chassis rails and fasten through the mount holes from the outside using - 4 - 3-3/4" x 1/2" UNC bolts, position the 3mm flat spacers on the outside of only 1 chassis rail, generally the drivers side, flat washers and nyloc nuts each side of the vehicle.

Note. Winch fitting should be carried out at this stage.



Step 19.
This image shows the chassis mount fastened in position with the 3mm flat spacers positioned on the outside of only 1 chassis rail, generally the drivers side.
The 3mm flat spacers are used to correct body mis-alignment.



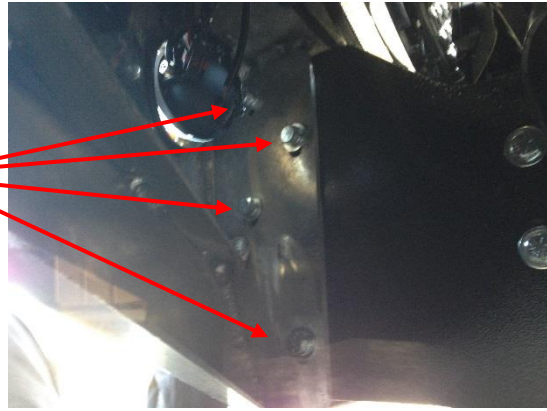
Step 20.
Fit and fasten the foglight / Sensor harness to the inside lower face of the Bull bar using the supplied cable ties.

Connect the indicator/park light and drive light wiring plugs and test the operation of all of the lights and be sure all wiring is secure.

No Image

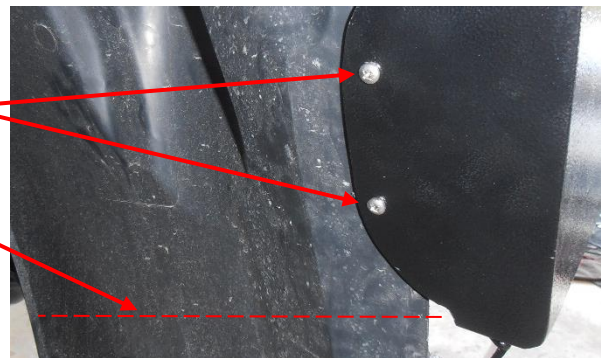
Step 21.

Fit the Bull bar to the vehicle chassis mounts, fasten using 4 - 1-1/2" x 1/2" UNC bolts, flat and spring washers into captive nuts on each chassis mount, align the Bull bar with the vehicle body and tighten all fasteners.



Step 22.

Attach inner splash guards to the Bull bar wing return using M5 dome head screws, flat washers and nyloc nuts. Note: A pair of extensions are supplied for use if the splash guards do not reach the end caps. Trim off approximately 100mm off the inner splash guard lower sections or level with the lower edge of the Bull bar.



Step 23.

Fit the 2 plastic drive light and 2 Winch access surrounds supplied
Fit 5 plastic vents supplied into the cut-out areas in the Bull bar.



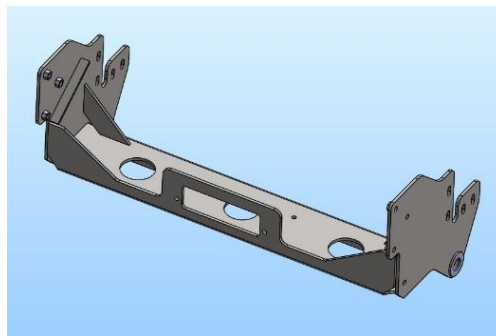
Step 24.

Re-fit the radiator grill and upper heat shield using original fasteners.
Check that all fasteners, covers and wiring are secure.

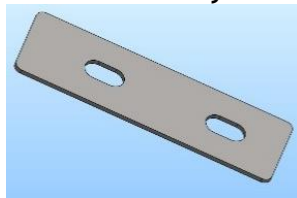


B3DO0009SY - Fitting Kit

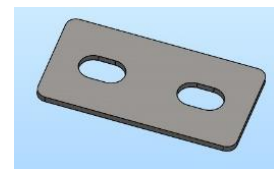
- 1 - Chassis mount/Winch frame assembly (shown below)
- 1 - Vertical spacer (shown below)
- 1 - Horizontal spacer (shown below)
- 2 - Splash guard mounts
- 8 - 1/2" x 3-3/4" UNC Hex bolts
- 8 - 1/2" UNC Nyloc nuts
- 8 - 1/2" x 1-1/2" UNC Hex bolts
- 24 - 1/2" H/D Flat washers
- 8 - 1/2" Spring washers
- 2 - M8 x 25 x 1.25mm Hex bolts
- 2 - M8 x 1.25mm Nyloc nuts
- 8 - M5 x 20 Dome head screws
- 8 - M5 Nyloc nuts
- 16 - M5 Flat washers
- 2 - ICLED104 ECB Indicator/Park light assemblies
- 2 - Drive light assemblies (1 box)
- 4 - Drive light surrounds fitted to Bullbar
- 5 - 6mm Air vent assemblies fitted to Bullbar
- 10 - Scotch locks
- 12 - Cable ties (Long)
- 2 - 100mm lengths of 3 core wire
- 12 - solder joiners
- 1 - Length of 6mm Pinch mold 2460mm long
- 1 - Length of 6mm Pinch mold 580mm long
- 6 - Parking Sensor Mounts fitted to Bullbar



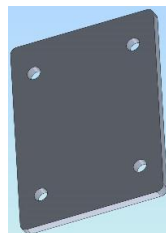
Chassis mount/Winch frame assembly



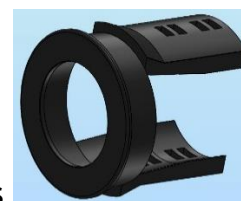
1 - Vertical spacer



1 - Horizontal spacer



2 - Splash guard mounts



6 - Parking Sensor mounts

Blank page

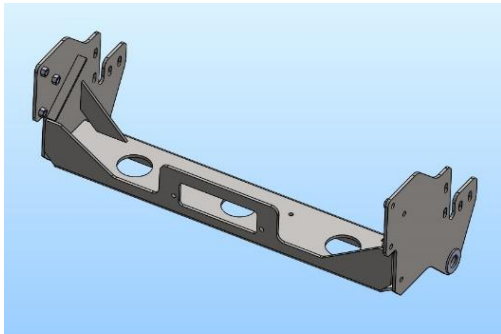
DESPATCH CHECKLIST

B3DO0009SY

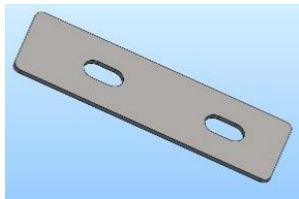
Work Order #	
Finish:	
Transport:	
Due Date:	

- OC.....1 – Steel mounting brackets.
- BK.....1 – Bolt Kit.
- BK.....1 – Vertical spacer.
- BK.....1 – Horizontal spacer.
- BK.....2 – Splash guard extensions
- BK.....1 – ICLED104 ECB indicator / park light kit.
- BK.....1 – 2460mm length 6mm clip lock
- BK.....1 – 580mm length 6mm clip lock
- OC.....2 – **ECB** Overrides – **Fitted to Bar**
- OC.....5 – 6mm Air Vents – **Fitted to Bar**
- OC.....4 – Drive light surrounds – **Fitted to Bar**
- BK.....2 – Drive light Assemblies (1 box)
- OC.....6 – Parking Sensor mounts – **Fitted to Bar**

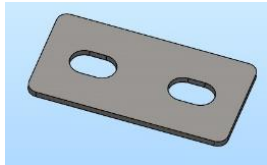
See next page for photos of all mounts.



Chassis mount/Winch frame assembly

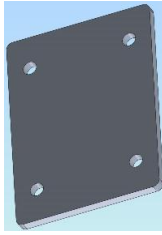


1 - Vertical spacer

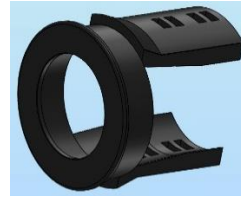


1 - Horizontal spacer

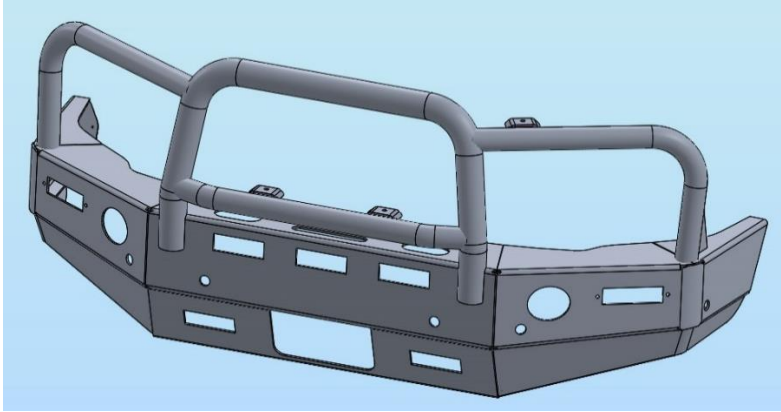
2 - Splash guard mounts



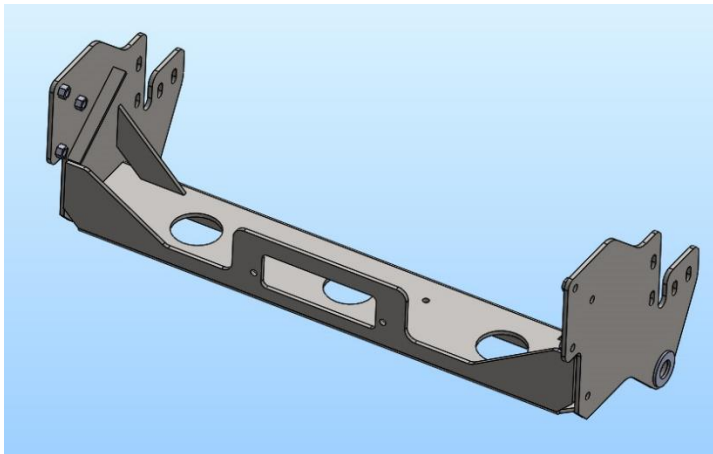
6 - Parking Sensor mounts



Bull bar



Winch frame



_____/_____
/

Wrapper's initials / Checker initials



Is this product “the best it can be” Yes

If NO fix before continuing

All parts checked and completed by:

Nut and bolts: _____ Date __/__/__

Order control: _____ Date __/__/__

Final wrap check: _____ Date __/__/__