



**Strongest Built
Australian Made
Lifetime Warranty**

PN:P2LD82SY



Fitting Guide & Owners Manual

LDV T60 MAX

9 / 2021 ON

Winch Compatible Protection Bar
VEHICLE FRONTAL PROTECTION SYSTEM (VFPS)
FOR AIR BAG & ADR COMPLIANT VEHICLES

Index

Pages 3-5

ECB's benefits
Product care

Pages 6-7

Stage 1 - Vehicle testing and preparation
Stage 2 - Radiator cover
Stage 3 - Top grille
Stage 4 - Inner guard
Stage 5 - Underside bumper
Stage 6 - Underbelly guard

Pages 8-9

Stage 7 - Disconnect camera
Stage 8 - Bumper supports
Stage 9 - Chassis rail
Stage 10 ,11,12 - Mount fittment

Pages 10-11

Stage 13 ,14,15,16 Recovery hooks
Stage 17 - Centre underbelly guard
Stage 18- Trim bumper
Stage 19 - Camera harness
Stage 20 - Camera

Pages 12-13

Stage 19 - Camera harness
Stage 20 - Camera
Stage 21 - Top support rail
Stage 22 - Install winch
Stage 23 - Protection bar fittment
Stage 24 - Camera connection

Pages 14-15

Stage 25 - Centre underbelly guards
Stage 26 - Side underbelly guards
Stage 27 - Number plate bracket, final checks

Pages 16-17

Final checks & installation kit
Finished product

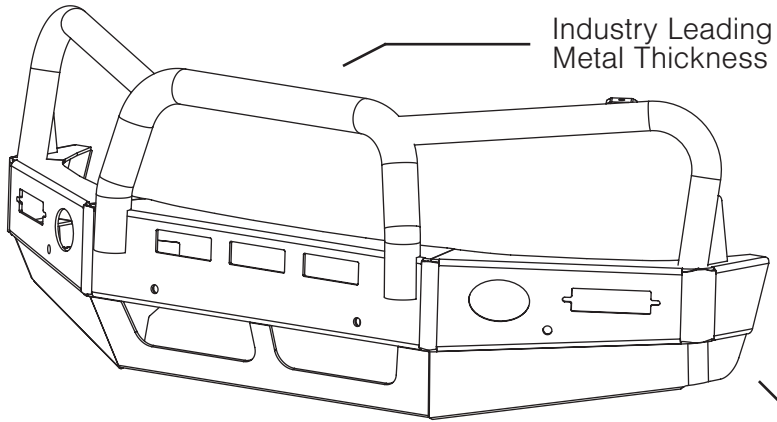
Pages 17-18

Warranty registration

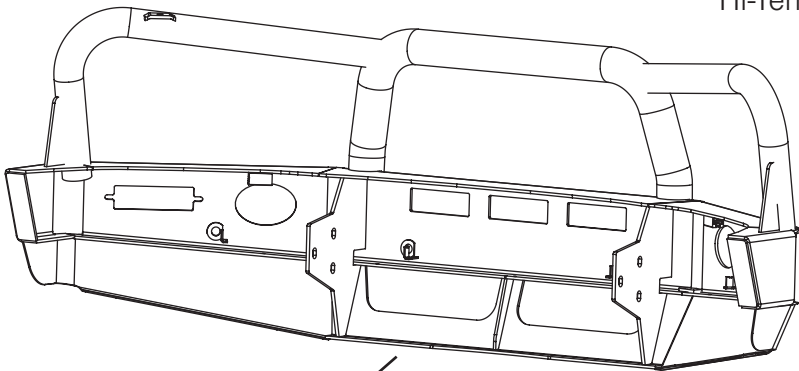
Pages 19-20

Notes

The Features of ECB



Industry Leading
Metal Thickness



6mm Thick
Hi-Tensile Alloy

Unmatched
Strength

Fully Welded
Construction

ECB's Benefits

Built to Perform - Not to a Price

ECB are proud to claim that their channels are not jigsaw puzzles that are bolted together, or even multiple sections welded together. Where any welding is required, it is done to the highest standards by qualified welders, not machines.

Anti-Corrosive Nature of Alloy

The composition of ECB's alloy has a very high resistance to corrosion. Rust not only looks unappealing but greatly reduces the strength of the metal. Rust can and will weaken the structural integrity of a steel bullbar effectively rendering it useless over time.

Australian Made

Established in 1971, we utilise over 46 years of experience designing, engineering and building products in Australia to suit Australian conditions. We can ensure the best quality controls and help support the local economy and employ over 90 proud Australians.

Weight Saving Benefits

An ECB alloy bullbar is typically half the weight of a steel bullbar. Unnecessary suspension upgrades are not required. The reduced weight also contributes to increased fuel economy and less wear and tear on tyres, suspension and braking components.

Welds That Work

ECB uses only the strongest welds and welding techniques to ensure every product is as structurally sound as possible. MIG (Metal Inert Gas) welding techniques are employed ensuring the welds are as thick as the thickest section of alloy's being joined together.

Lifetime Warranty

ECB provide a lifetime warranty and consumer guarantee on all of our manufactured products. This guarantee highlights the confidence in our ability and provides complete peace of mind for your purchase for the lifetime you own your vehicle.

Product Care

Polished Products

Being a premium mirror polished finish, regular maintenance will be required to keep that iconic ECB shine. We recommend using our own brand of Aluminium Polish. This formula has been tried and tested and in our opinion is the world's best standard.

Directions: Apply a small quantity of Aluminium Polish to a clean soft cloth and rub the metal surface. The longer the rubbing the brighter the surface becomes. Wipe off Aluminium Polish with clean soft cloth. Also suitable for motorised buffing machines.

Note: There are more specific details on the polish bottle. Please read before use.

Powdercoated Products

Our powdercoated finishes are very low maintenance, Infact there is actually very little you will ever need to do for this product. Just clean it as you would your car and it will stay looking good as new.

ECB Aluminium Polish

When you're looking for that showroom finish look for your polished automotive products, you can depend on the no compromise quality of East Coast Bullbars Aluminium Polish. This specifically designed product is the best polish available and we guarantee that this \$#!+ works. With over 40 years of manufacturing polished alloy products we have trialed a large range of different polishes on the market and believe without a doubt that nothing beats the finish quality of East Coast Bullbars Aluminium Polish.

East Coast Bullbars Aluminium Polish is excellent for use by hand and is ideal for polished bullbars, nudge bar and stainless steel products. This polish will clean, polish and protect your product from the elements whilst bringing your products back to that showroom finish look.



P2LD82SY

Stage 1

- Test drive vehicle to ensure all driver assists are correctly working and to gauge effectiveness. Park on a flat level surface.
- Apply parking brake and lift bonnet.
- Unwrap ECB Protection bar and disconnect mounts. Discard bolts.
- Ensure these instructions are left with the vehicle owner and/or operator.



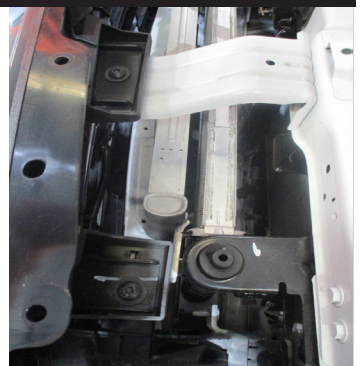
Stage 2

- Remove twelve (12) push pull clips from top of grille plastic trim.



Stage 3

- From top of grille at headlights, remove four (4) T27 Torx screws.



LDV T60 MAX 2022

Stage 4

- At front of inner guards remove three (3) push pull clips, at top of guard remove one (1) phillips head screw per side.



Stage 5

- Underside of bumper remove eight (8) T27 Torx head screws and two (2) push pull clips per side.
- Remove two (2) T27 Torx head screws from center lower bumper.



Stage 6

- Remove centre underbelly guard T27 torx screws eight (8), two (2) push pull clips.
- Remove rear guard four (4) 10mm head bolts, two (2) at rear and one (1) each upper side, retain for refitment.



P2LD82SY

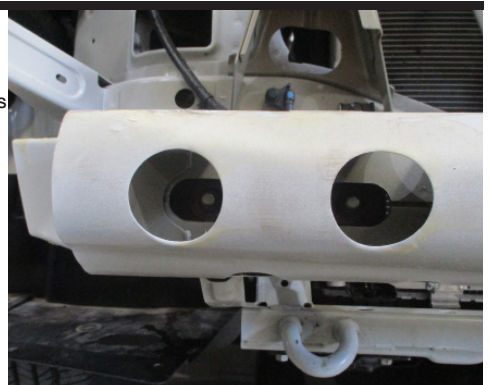
Stage 7

- Disconnect camera from passenger side inner bumper. If fitted.
- Gently pull sides of bumper away from guards, then forward from under headlights. **CAUTION:** When pulling forward, there are clips under the headlights which are easily damaged.
- Remove bumper.



Stage 8

- Remove bumper support four (4) 15mm head nuts
- Remove four (4) supports, 8mm head bolts.



Stage 9

- Drill hole at rear of chassis rail plates to 22mm to allow fitment of 52mm chassis spacer tube.
- **Blow filings clear and treat all exposed metal with a rust inhibitor**



LDV T60 MAX 2022

Stage 10

- Install ECB steel mount to front of chassis using four (4) M10 flat washers, M10 spring washers and M10x1.25 nuts finger tighten only.
- Check mount is central to body of vehicle, tighten nuts.



Stage 11

Drill hole end of chassis rail using mount as a guide, use M10x1.5x30mm bolt, M10 flat washer, M10 spring washer and M10x1.5 nut.

Tighten all nuts.



Stage 12

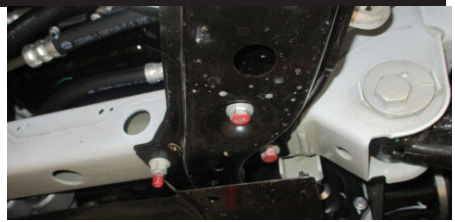
- Fit support brackets to winch cradle to chassis rail, M10x1.5x30mm bolts, M10 flat washers, M10 spring washers and M10x1.5 nuts. Finger tighten only.



LDV T60 MAX 2022

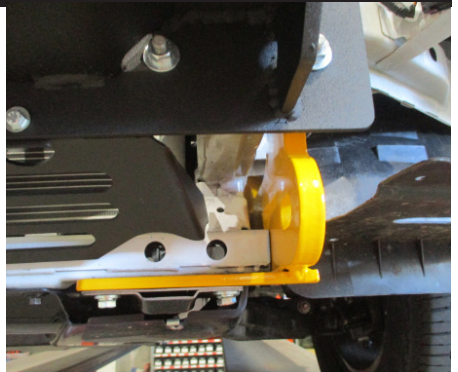
Stage 13

- Loosen rear of cross member brace, two (2) 15mm head bolts and one (1) 13mm head nut.
- Remove front two (2) 13mm head bolts.



Stage 14

- Pull down cross member brace and install recovery hook mounts, between support rail and chassis.
- Place bolts in front holes, Secure radiator supports with M10 x 1.5 x 30mm bolts, flat washers at this stage, tighten bolts.



Stage 15

- Rear hole on recovery hook use hole as a guide and drill 12.5mm hole through both sides of rail. Once hole is drilled remove recovery hooks, Enlarge holes to 22mm to allow fitment of 58mm spacer tube.
- Remove recovery hook. **Blow filings clear and treat all exposed metal with a rust inhibitor**



P2LD82SY

Stage 16

- Refit recovery hooks as per step 14
- Front hole use 52mm spacer tube, M12x120 bolt, M12 flat washers, M12 spring washers and M12x1.75 nut.
- Rear hole place 58mm spacer tube in rail and fit recovery hooks using M12 x 120mm bolt, flat washer, spring washer and nuts. Finger tighten only.
- Align hooks and tighten all bolts.



Stage 17

- Fit alloy centre underbody guard to winch mount, guard to fit between rear of mount and lower support rail.
- Secure to winch mount with three (3) M6 x 25mm bolts, flat washers and nyloc nuts.
- Do not place M6 bolts into lower guard at this stage.



Stage 18

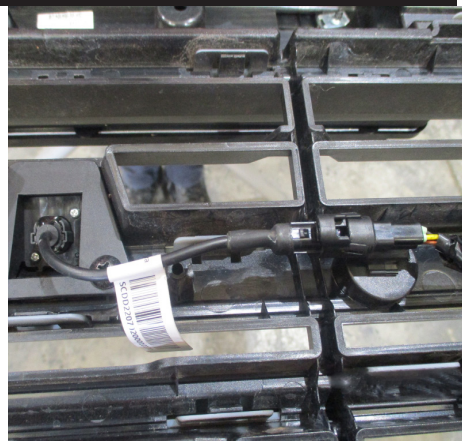
- Trim bumper use template as a guide.
- Mask area to be trimmed with tape to avoid any damage. Cut template from sheet provided. Use template to mark bumper for cut. Use jig saw or hacksaw to trim bumper.
- Caution - Check scale as some photocopiers may differ.
- NOTE: As vehicles differ, it is better to leave material and trim to suit your bumper.



LDV T60 MAX 2022

Stage 19

- Release camera harness from rear of grille so it can be rerouted.
- IF FITTED



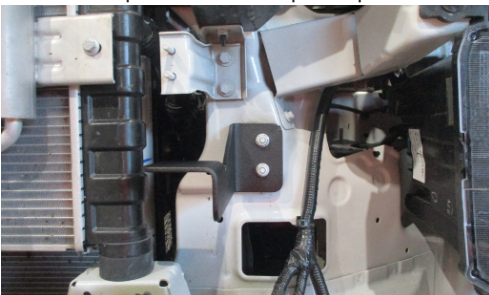
Stage 20

- Remove camera from grille two (2) phillips screws.
- Place camera into protection bar, align mount and secure with button head self drilling screws.
- Remove ridges from rear of camera mount, so mount will sit flush on mount in protection bar.
- IF FITTED



Stage 21

- Remove top support rail, four (4) 10mm nuts.
- Replace with support brackets provided using original 10mm nuts.
- Refit bumper in reverse as per steps 2 to 4 .



P2LD82SY

Stage 22

- Install winch into winch frame according to manufacturers instructions.

NOTE: Control box for current Warn winches remain attached to the top of the winch.



Stage 23

- Fit protection bar to winch mount, M12 x 1.75 x 40mm bolts, flat washers, spring washers and nuts.
- Align protection bar and tighten all bolts.



Stage 24

- Connect camera, secure harness to body and lower grille avoiding any sharp objects
- check for correct operation.

LDV T60 MAX 2022

Stage 25

- Ensure all bolts have been tightened on cross member brace.
- Fit original equipment rear underbelly guard, using original bolts. Ridges on plastic guard will need to be removed, for correct fitment of alloy underbody guard to front.
- Secure alloy guard with M6 x 25mm bolts, spring washers and flat washers.



Stage 26

- Fit side underbelly guards using M6 x 25 bolts, flat washers and nyloc nuts.
- Trim inner guards to suit underbelly guards.



Stage 27

- Place number plate bracket above winch cut out and mark holes on protection bar.
- Drill holes to 6mm.
- Install number plate bracket to front of protection bar using two (2) M5 x 20 screws, flat washers and nyloc nuts.
- Test all safety features are working correctly.

P2LD82SY

Final Checks

Ensure Number Plate is Clearly Visible

Note: When fitting/refitting the licence plate to the vehicle, ensure there is no obstruction to licence plate vision in accordance with local authorities. If required relocate licence plate to an alternate location.

Further VFPS Notes

1. Do not attach VFPS to the vehicle using anchorages not intended for this purpose (e.g. engine mounting bolts).
2. Do not use this product for any vehicle make or model, other than those specified by the VFPS manufacturer.
3. Do not remove the plaque or label from the VFPS.
4. Do not modify the structure of the VFPS in any way.
5. No accessory or fitment should project forward of the VFPS forward profile.
6. **Insure these instructions are left with the vehicle owner and/or operator.**

Important Information

Periodically check bolts and nuts for correct tightness, especially if traveling on rough roads.

Installation Kit

Installation Kit

| | |
|--|--|
| 1 - ECB steel winch mount | 12 - M12 x 1.75 nuts |
| 1 - Pair steel support brackets left and right | 10 - M10 x 1.5 x30mm bolts |
| 1 - Pair recovery hooks left and right | 20 - M10 flat washers |
| 1 - Pair side underbelly guards left and right | 10 - M10 spring washers |
| 1 - Centre underbelly guard. | 10 - M10 x 1.5 nuts |
| 2 - 15Nb 52mm spacer tubes | 13 - M6 x 25mm bolts |
| 2 - 15Nb 58mm spacer tubes | 26 - M6 flat washers |
| 1 - Number plate hinge bracket - Part G Assembled to H | 13 - M6 Nyloc nuts |
| 1 - Number plate hinge bracket - Part H Assembled to G | 2 - M5 x 20mm Pan head phillips screws |
| 1 - Pair cradle support mount left & right | 4 - M5 flat washers |
| 4 - M12 x 1.75 x 120mm bolts | 2 - M5 Nyloc nuts |
| 8 - M12 x 1.75 x 40mm bolts | 6 - 150mm zip ties |
| 24 - M12 flat washers | 2 - 300mm lengths 3mm clip lock |
| 12 - M12 Spring washers | |

Finished Product



Warranty Registration

Contact Details

Name: _____

Address: _____

Product: **P2LD82SY**

Email: _____

Phone: _____

Work Order Number: _____

You Can find this on the silver label
of your ECB product.

By submitting this registration you automatically subscribe to ECB's mail outs. You
can unsubscribe at any time.

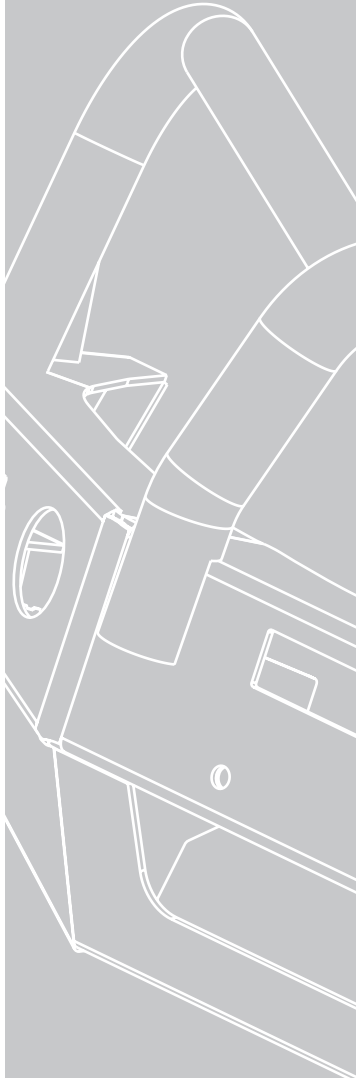
Or Register Online

For online registration please go online to www.ecb.com.au/warranty-registration
If you have any questions please contact our national office on 1800 069 145 or
www.ecb.com.au.



REPLACES: 25.07.23

REVISED: 25.03.24



1800 069 145
www.ecb.com.au

Strongest Built Australian Made Lifetime Warranty

29 Snook St, Clontarf QLD 4019
PO Box 122, Margate QLD 4019