



INSTALLATION GUIDE

TOYOTA RAV4 05-19 ON

PN: NBT137SY | NB6T137SY

GX | GXL MODELS



NUDGE BAR | SERIES 2 NUDGE BAR
VEHICLE FRONTAL PROTECTION SYSTEM (VFPS)
FOR AIR BAG & ADR COMPLIANT VEHICLES

INDEX

PAGE 3

Installation Kit

PAGE 4

Stage 1 - Vehicle Testing and Preparation

Stage 2 - Bumper Removal

Stage 3 - Bumper Support Removal

PAGE 5

Stage 4 - Install Steel Mounting Brackets

Stage 5 - Lower and Side Air Dams

Stage 6 - Temperature Sensor

PAGE 6

Stage 7 - Stabilizer Mounts

Stage 8 - Air Dams and Bumper Support

Stage 9 - Polystyrene Infill Refitment

PAGE 7

Stage 10 - Sensor Wiring

PAGE 8

Stage 11 - Bumper Lower Grille Trim

Stage 12 - Bumper Refitment

Stage 13 - Protection Bar Fitment

PAGE 9

Stage 14 - Connection and Checks

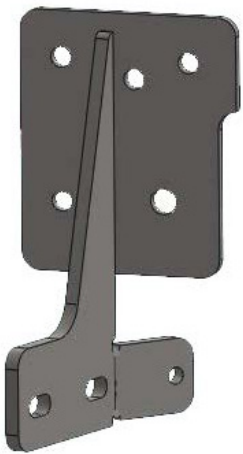
PAGE 10

Final Checks

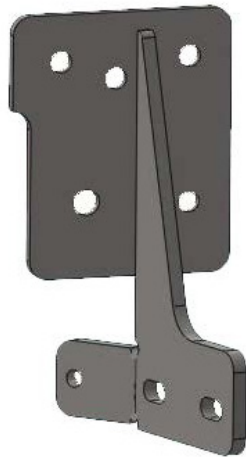
INSTALLATION KIT

INSTALLATION KIT - NUDGE BAR | SERIES 2 NUDGE BAR

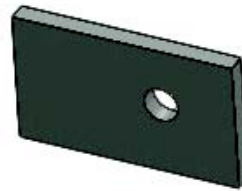
1	Pair Steel Mounting Brackets	6	M8 X 1.25 X 30mm Bolts
1	Pair Steel Stabilizer Mounts	12	M8 Flat Washer
4	40 X 40 X 6mm Steel Flat Washer	6	M8 X 1.25 Nyloc Nuts
2	40 X 70 X 6mm Steel Flat Washer	4	300mm Zip Ties
4	M10 X 1.5 X 40mm Bolts	4	200mm Zip Ties
6	M10 X 1.5 X 35mm Bolts	1	Quick Click Kit (IC19TOR4SP1H) - Only Required for 2019 - 2025 models
20	M10 Flat Washers	2	Flat Oval Outer Bracket
10	M10 Spring Washers	2	LC300 Inner Sensor Mounts
10	M10 X 1.5 Nuts	2	RAV4 Sensor Inner Mount



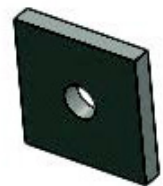
Left Hand Mount



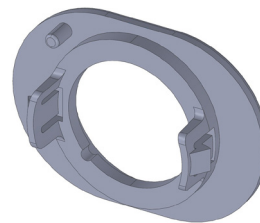
Right Hand Mount



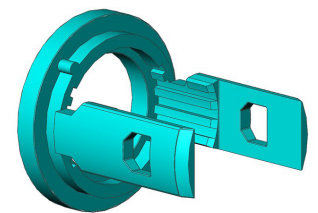
40 x 68 x 10.5mm Washer
(P/C Black)
IN BOLT KIT



40 x 40 x 13mm Washer
(P/C Black)
IN BOLT KIT

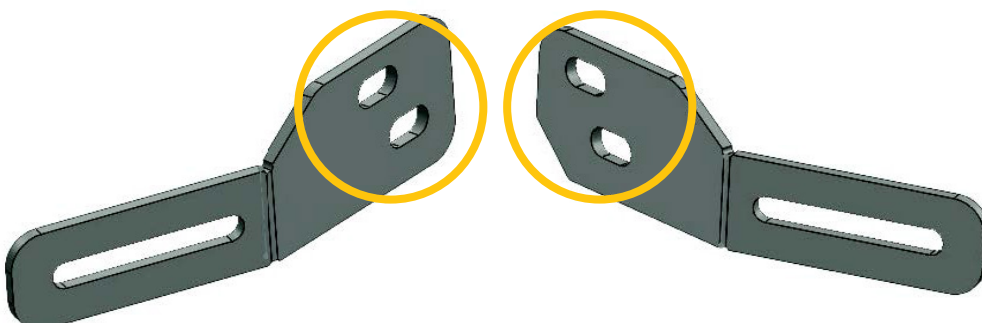


Flat Oval Outer Bracket



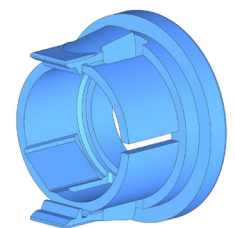
LC300 Inner Sensor
Mounts

NOTE: Holes are different on each side.
Must be bent correct direction



Left Hand Steel Stabilizer Mount
(NBT134_G4M) - P/C BLACK

Right Hand Steel Stabilizer Mount
(NBT134_F4M) - P/C BLACK



RAV4 Sensor Inner Mount

TOYOTA RAV4 05-19 ON

STAGE 1 - VEHICLE TESTING

Test drive vehicle to ensure all driver assists are correctly working and to gauge effectiveness

Park on a flat level surface.

Apply parking brake and lift bonnet.

Unwrap ECB Protection Bar and disconnect mounts.
Discard bolts.

Ensure these instructions are left with the vehicle owner and/or operator.



STAGE 2 - BUMPER REMOVAL

On top of bumper remove four (4) x 10mm head bolts, five (5) x push pull clips. Remove plastic trim.

From underside of vehicle remove six (6) x 10mm head bolts.

On inner guards remove one (1) Phillips head screw and two (2) x push pull clips (per side). Carefully unclip wheel arch mold from inside while pulling outwards.

Remove one (1) x clip in rear wing per side. Pull out on rear wing to unclip from guard and unplug wiring on passenger side.

Remove bumper



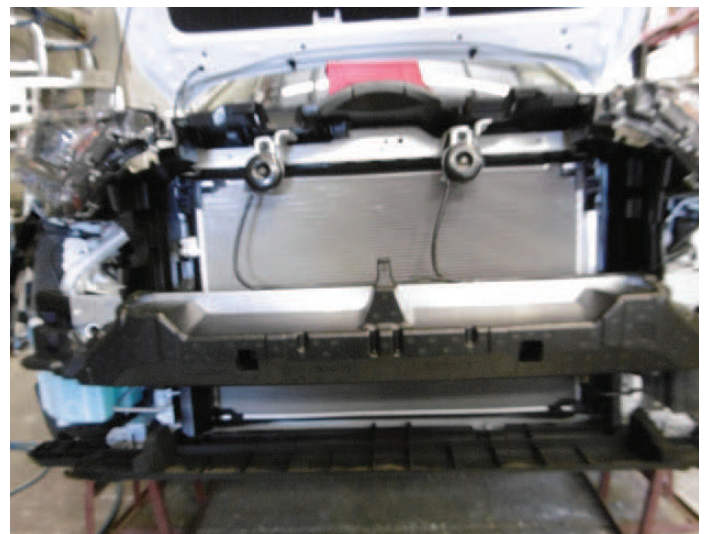
STAGE 3 - BUMPER SUPPORT REMOVAL

Remove polystyrene infill from bumper reinforcement.

Retain for re-fitment.

Disconnect wiring from bumper reinforcement.

Remove bumper reinforcement by removing three (3) x 14mm head bolts per side. Retain for re-fitment.



NBT137SY - NB6T137SY

STAGE 4 - INSTALL STEEL MOUNTING BRACKETS

Working on one side at a time, install steel mounting bracket (supplied) onto bumper support with original bolt in outer lower hole.

Using mounting bracket as a guide drill inner holes to 10mm. Attach mount with two (2) x M10 x 1.5 x 35mm bolts, flat washer, 40 x 40mm washer plate (supplied) to rear of bumper support and flat washer, spring washer and nut (supplied).

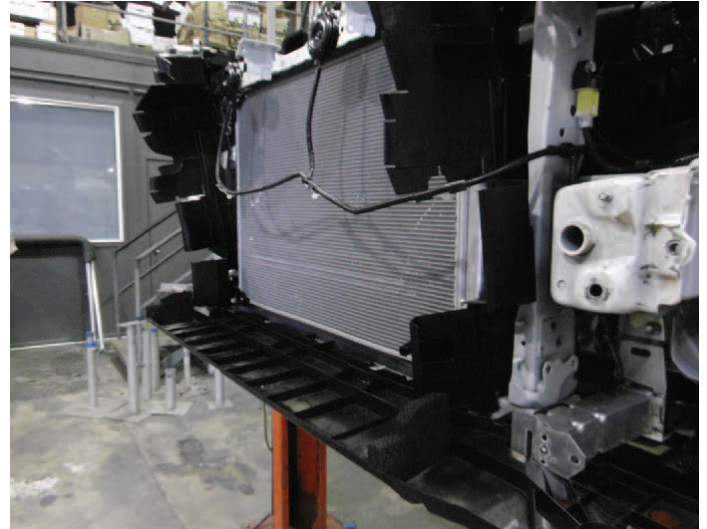
Install one (1) x M10 x 1.5 x 35mm bolt, flat washer and 40 x 70mm washer plate (supplied) in top outer hole from rear and secure with flat washer, spring washer and nut (supplied).



STAGE 5 - LOWER AND SIDE AIR DAMS

Remove lower air dam for access to rear bolt in steel mount when installing Protection Bar.

Remove side air dam beside radiators.

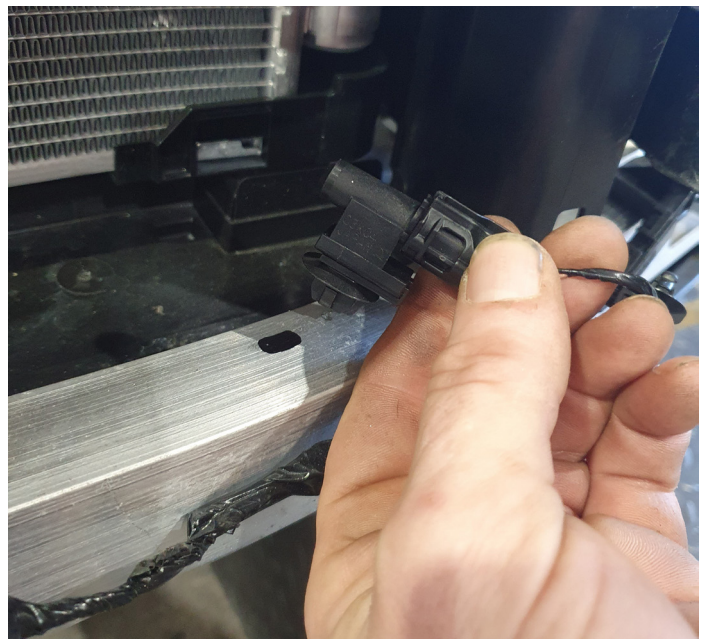


STAGE 6 - TEMPERATURE SENSOR | 2026 ON MODEL ONLY

Unclip temperature sensor and relocate.

Drill 6mm hole in lower bumper support.

Die grind hole into slot to hold clip.



TOYOTA RAV4 05-19 ON

STAGE 7 - STABILIZER MOUNTS

Fit steel stabilizer mount (supplied) onto radiator support using one (1) x M8 x 1.25 x 30mm bolt, flat washer and Nyloc nut per side (supplied).

FINGER TIGHT ONLY.

Using mount as a guide, drill lower hole to 8mm.

BLOW FILINGS CLEAR AND TREAT ALL EXPOSED METAL WITH A RUST INHIBITOR.

Install one (1) x M8 x 1.25 x 30mm bolt, flat washer and Nyloc nut (per side) (supplied).

FINGER TIGHT ONLY.



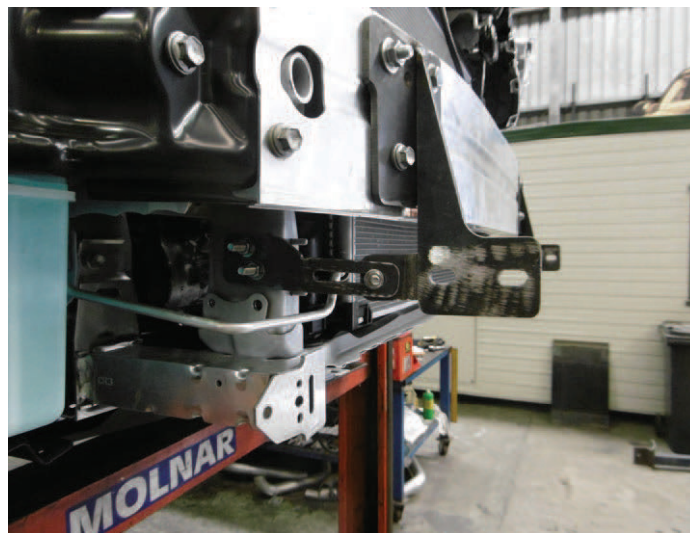
STAGE 8 - AIR DAMS AND BUMPER SUPPORT

Refit side air dams.

Refit bumper reinforcement using original equipment.

Fix stabilizer mount to the outside of steel mount with one (1) x M8 x 1.25 x 30mm bolt, flat washer and Nyloc nut per side (supplied).

TIGHTEN ALL BOLTS.



STAGE 9 - POLYSTYRENE INFILL REFITMENT

Mark and trim polystyrene to fit over steel mounting brackets.

Zip tie onto reinforcement.



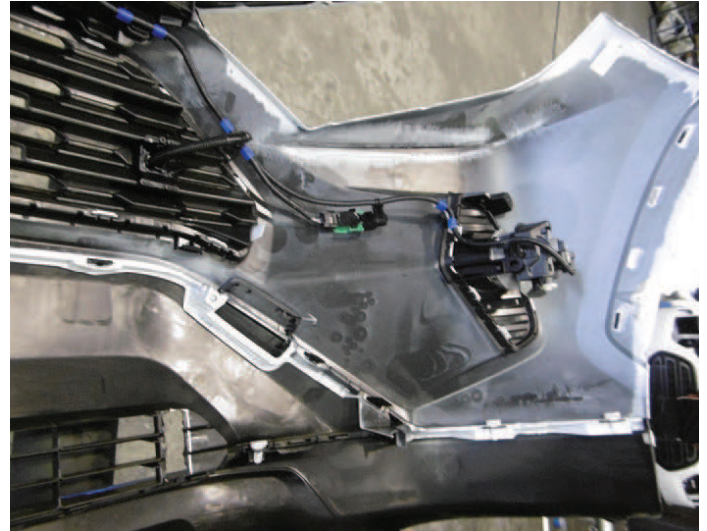
NBT137SY - NB6T137SY

STAGE 10 - SENSOR WIRING

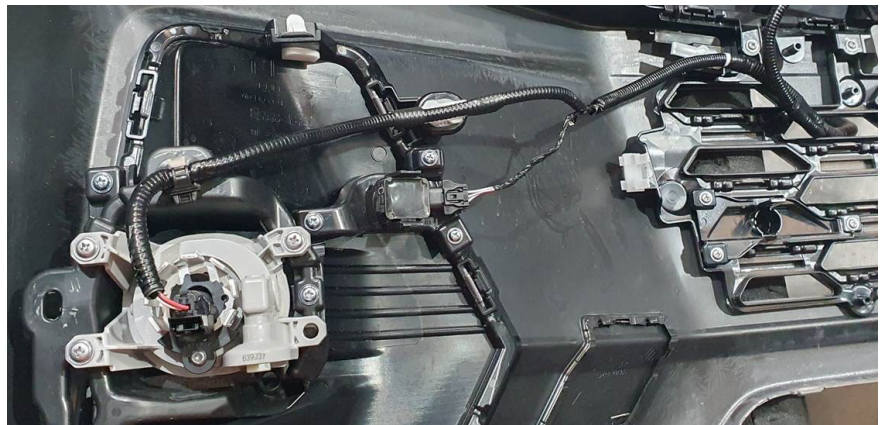
Remove the two (2) x centre parking sensors from plastic bumper.

Relocate parking sensors to rear of plastic housings in Protection Bar.

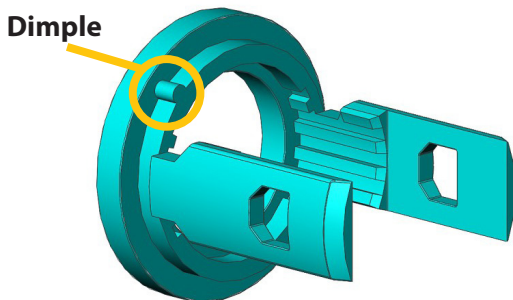
2019 - 2025 Models only: Using Quick click harness (supplied), feed harness through sensor holes in bumper cover and connect to original equipment wiring harness.



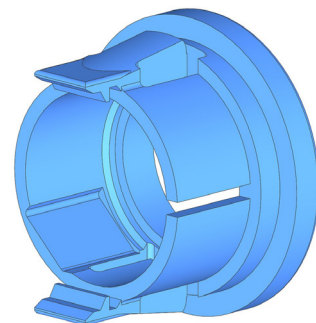
2026 on Models: Rearrange original equipment wiring harness by shifting clips along as per photo. Feed sensor connectors through grille.



Insert model appropriate sensor inner into sensor holder outer on nudge bar. Ensure dimple is aligned in hole.



2026 on Models



2019 - 2025 Models

NOTE: Holes in bumper may need to be enlarged to allow harness to feed through.

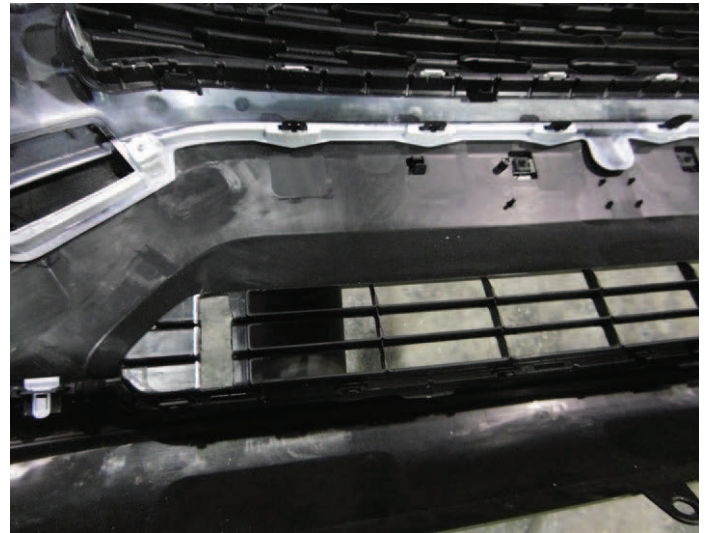
TOYOTA RAV4 05-19 ON

STAGE 11 - BUMPER LOWER GRILLE TRIM

Using measurement from steel mounting bracket, mark and trim lower grille for mounting to go through.

Ensure trim is as neat as possible as this will not be covered.

NOTE: Alloy goes to outside of mounting bracket.



STAGE 12 - BUMPER REFITMENT

Relocate temperature sensor to slotted hole in lower bumper support.

Refit bumper onto vehicle using original equipment as per reverse of Stage 2.



STAGE 13 - PROTECTION BAR FITMENT

Fit Protection Bar onto steel mounting brackets using four (4) x M10 x 1.5 x 40mm bolt, flat washer, spring washer and nut (supplied).

Align and **TIGHTEN ALL BOLTS.**

NOTE: Access bolt holes by using tow point cover and reach up from underbelly.



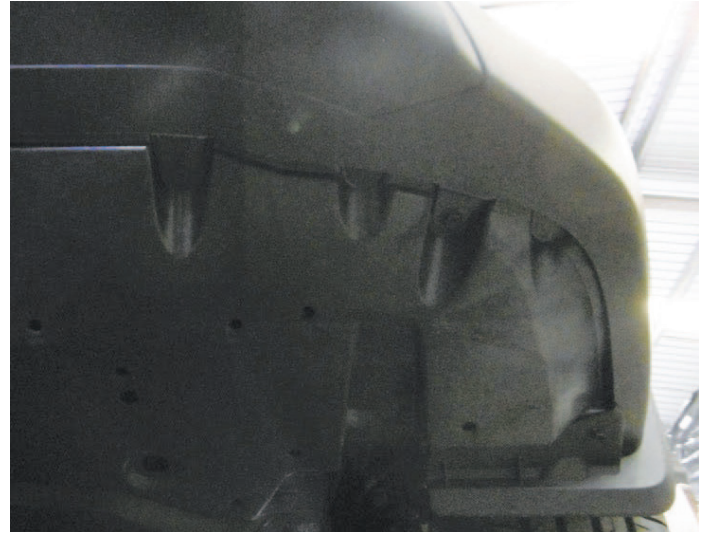
NBT137SY - NB6T137SY

STAGE 14 - CONNECTIONS AND CHECKS

Connect sensors and check for correct operation.

Refit lower air dam and under body guard.

Test drive vehicle to ensure all driver assists are working as per before fitment.



FINAL CHECKS

ENSURE NUMBER PLATE IS CLEARLY VISIBLE

NOTE: When fitting/refitting the licence plate to the vehicle, ensure there is no obstruction to licence plate vision in accordance with local authorities. If required relocate licence plate to an alternate location.

FURTHER VFPS NOTES

1. Do not attach VFPS to the vehicle using anchorages not intended for this purpose (e.g. engine mounting bolts)
2. Do not use this product for any vehicle make or model, other than those specified by the VFPS manufacturer
3. Do not remove the plaque or label from the VFPS
4. Do not modify the structure of the VFPS in any way
5. No accessory or fitment should project forward of the VFPS forward profile

IMPORTANT INFORMATION

Periodically check bolts and nuts for correct tightness, especially if traveling on rough roads.

BUILT FOR PURPOSE
MADE FOR LIFE



1800 069 145
ECB.COM.AU
29 SNOOK ST, CLONTARF QLD 4019

REPLACES: 25.04.22

REVISED: 09.06.26