



## INSTALLATION GUIDE

**MG ZS 12/2025 ON**

**PN: NBMG002SY**



### **NUDGE BAR**

**VEHICLE FRONTAL PROTECTION SYSTEM (VFPS)  
FOR AIR BAG & ADR COMPLIANT VEHICLES**

# INDEX

---

## **PAGE 3**

Installation Kit

## **PAGE 4**

Stage 1 - Vehicle Testing and Preparation

Stage 2 - Radiator Cover

Stage 3 - Bumper Attachment

## **PAGE 5**

Stage 4 - Flares and Bumper Removal

Stage 5 - Assemble Mounts

Stage 6 - Mount Installation

## **PAGE 6**

Stage 7 - Mount Alignment

Stage 8 - Bumper Trim

## **PAGE 7**

Stage 9 - Bumper Refitment

Stage 10 - Number Plate Mount

Stage 11 - Install Nudge Bar

## **PAGE 8**

Stage 12 - Check Safety Features

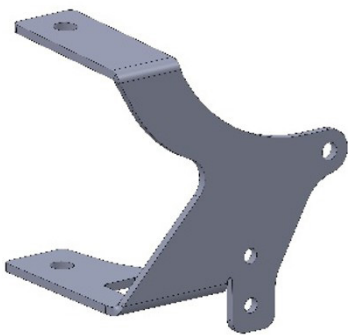
# INSTALLATION KIT

## INSTALLATION KIT - NUDGE BAR

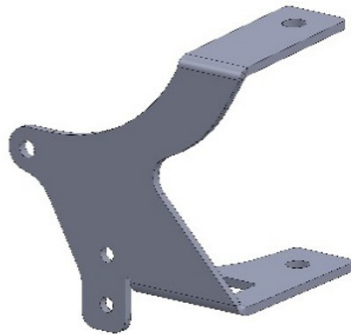
1	LH Rear Mount	8	M8 x 40 Bolts
1	RH Rear Mount	10	M8 x 30 Bolts
1	LH Front Mount	22	M8 x 3 Flat Washers
1	RH Front Mount	2	M8 Spring Washers
1	Number Plate Relocation Bracket	10	M8 Nyloc Nuts
8	40 x 40 x 6 - 13H Flat Steel Washer	2	M8 Nut – Washer on 300mm wire
2	M8 x 200 Bolts	2	M6 x 20 Black Allen Head Screws

## TORQUE LIST

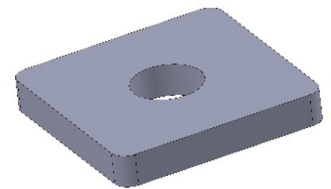
DIAMETER	THREAD PITCH	RECOMMENDED ASSEMBLY SETTING	
M8	1.25	22 Nm	16.2 lbf.ft
M6	1	7 Nm	5 lbf.ft



RH Rear Mount



LH Rear Mount



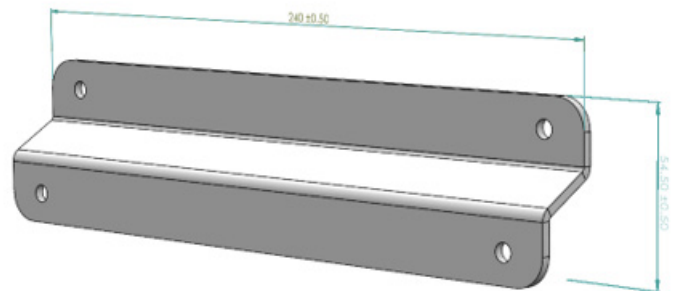
40 X 40 X 6 – 13H Washer Plate



RH Front Mount



LH Front Mount



Number Plate Relocation Bracket

# MG ZS 12/2025 ON

## STAGE 1 - VEHICLE TESTING

Test drive vehicle to ensure all driver assists are correctly working and to gauge effectiveness  
Park on a flat level surface.

Apply parking brake and lift bonnet.

Unwrap ECB Protection Bar and disconnect mounts. Discard bolts.

Ensure these instructions are left with the vehicle owner and/or operator.

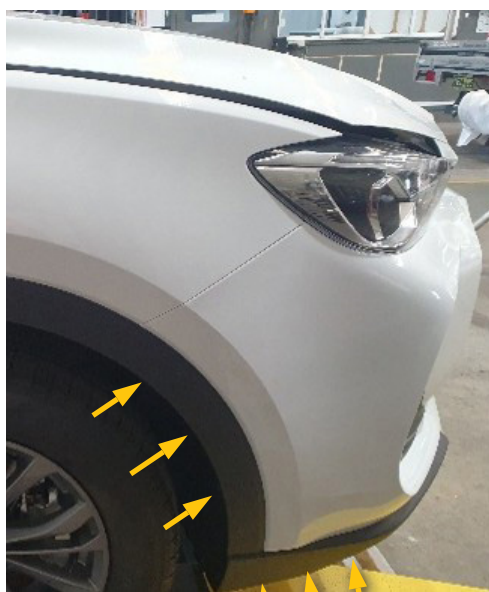


## STAGE 2 - RADIATOR COVER

Remove six (6) 10mm head screws from top radiator trim.



## STAGE 3 - BUMPER ATTACHMENT



Remove six (6) phillips head screws from front of guard liner (per/side).



Remove one (1) push pull clip from rear wing (per/side).



Remove five (5) 10mm head bolts from under bumper center.

## STAGE 4 - FLARES AND BUMPER REMOVAL

Unclip wheel arch flare, removing enough to work on the guard/ bumper join.

Remove one (1) Phillips screw from the bumper locator.

Pull out on the rear of the bumper to remove the bumper from the guard locator clips. Wiggling the bumper front to rear will help to unclip the locator easier.

Unplug fog lights and remove bumper.

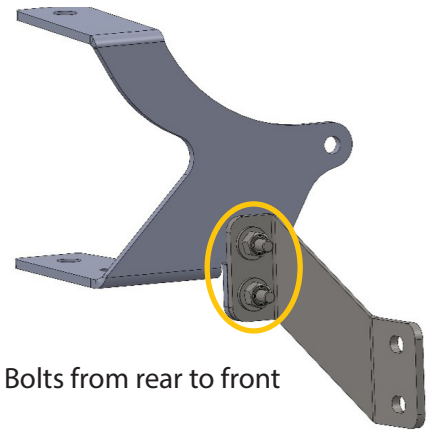


## STAGE 5 - ASSEMBLE MOUNTS

Connect two halves of ECB Steel Mount together using two (2) M8 x 40 bolts, flat washers and Nyloc nuts.

Assemble Nudge Bar Mount to Rear Mount with bolt heads to rear of mount.

**Finger tighten only.**



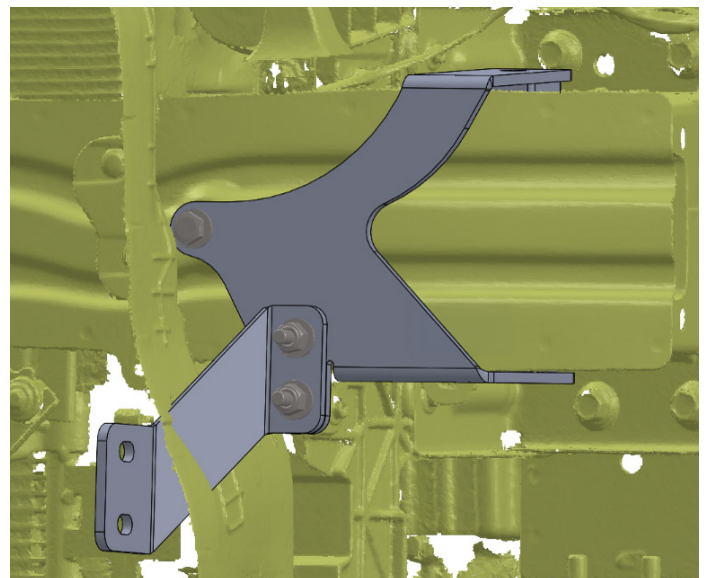
**NOTE:** Bolts from rear to front

## STAGE 6 - MOUNT INSTALLATION

Slide ECB steel mount onto front of chassis rail.

Using M8 x 200 bolt and flat washer from underside of the chassis rail, attach steel mount with 2 x 6mm spacer plates between lower mount and chassis and 2 x 6mm spacer plates between chassis rail and top of steel mount.

Attach to front of cross member using M8 x 30 bolts, spring washer, flat washer and M8 nut on wire.

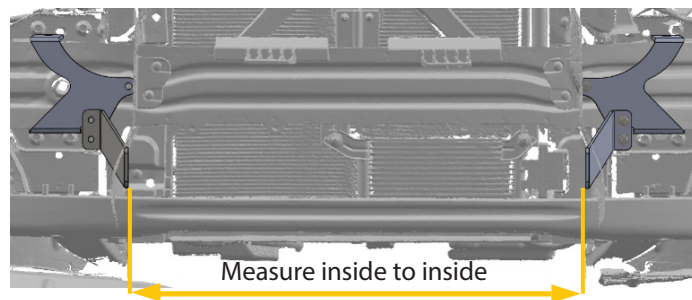


# MG ZS 12/2025 ON

## STAGE 7 - MOUNT ALIGNMENT

Measure distance from outside of mounts on Alloy Product.

Using this measurement, align the inside of the steel mounts to match. Ensure steel mounts are central to the vehicle and tighten all bolts.



## STAGE 8 - BUMPER TRIM

Using steel mounting bracket measurement as a guide, mark and carefully cut lower grille to fit over steel mount.

**NOTE:** Cut bumper only large enough for steel mount to protrude.



## STAGE 9 - BUMPER REFITTING

Refit bumper to vehicle using original equipment in the reverse step of 3 and 4.



## STAGE 10 - NUMBER PLATE MOUNT

Install number plate mount to allow the number plate to sit lower and further forward from the vehicle using two (2) M6 x 20 black Allen head screws.



## STAGE 11 - INSTALL NUDGE BAR

Fit Protection Bar onto steel mounting brackets using two (2) M8 x 40mm bolts, flat washers and Nyloc nuts per/side (supplied).

Align Protection Bar to front of vehicle and tighten all bolts.



# MG ZS 12/2025 ON

## LAST STAGE - CHECK SAFETY FEATURES

Check all safety features working correctly.



## ENSURE NUMBER PLATE IS CLEARLY VISIBLE

**NOTE:** When fitting/refitting the licence plate to the vehicle, ensure there is no obstruction to licence plate vision in accordance with local authorities. If required relocate licence plate to an alternate location.

## FURTHER VFPS NOTES

1. Do not attach VFPS to the vehicle using anchorages not intended for this purpose (e.g. engine mounting bolts)
2. Do not use this product for any vehicle make or model, other than those specified by the VFPS manufacturer
3. Do not remove the plaque or label from the VFPS
4. Do not modify the structure of the VFPS in any way
5. No accessory or fitment should project forward of the VFPS forward profile

## IMPORTANT INFORMATION

Periodically check bolts and nuts for correct tightness, especially if traveling on rough roads.



# BUILT FOR PURPOSE **MADE FOR LIFE**



---

1800 069 145  
ECB.COM.AU  
29 SNOOK ST, CLONTARF QLD 4019

**REPLACES: 00.00.00**  
**REVISED: 12.05.26**