



INSTALLATION GUIDE

MITSUBISHI TRITON 2024 ON

PN: NBM166SY



NUDGE BAR

**VEHICLE FRONTAL PROTECTION SYSTEM (VFPS)
FOR AIR BAG & ADR COMPLIANT VEHICLES**

INDEX

PAGE 3

Installation Kit

PAGE 4

Stage 1 - Vehicle Testing And Preparation

Stage 2 - Top Radiator Cover

Stage 3 - Remove Grille

PAGE 5

Stage 4 - Inner Guard

Stage 5 - Underside

Stage 6 - Fog Light Cover

PAGE 6

Stage 7 - Wiring Harness

Stage 8 - Bumper Removal

Stage 9 - Foam Support

PAGE 7

Stage 10 - Underbelly Guard

Stage 11 - Disconnect Parking Sensors

PAGE 8

Stage 12 - Bumper Trim

Stage 13 - Refit Bumper

Stage 14 - Parking Sensors

PAGE 9

Stage 15 - Install Protection Bar

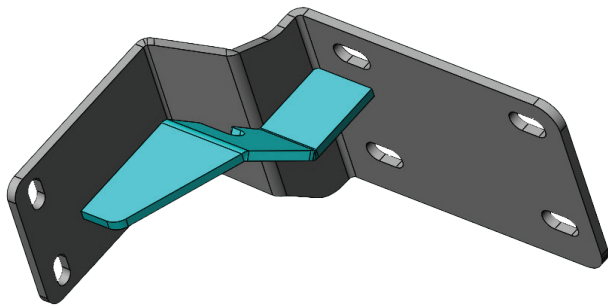
Stage 16 - Check Safety Features

PAGE 10

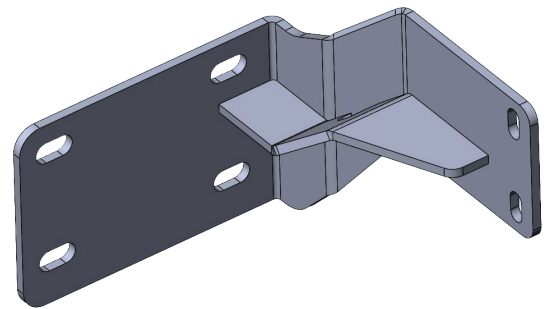
Final Checks

INSTALLATION KIT

1 - Pair Steel Mounts Left And Right	4 - M10 x 1.5 Nuts
8 - M10 x 1.25 x 60mm Bolts	4 - 8g 18 x 12 Self Drilling Screws
4 - M10 x 1.5 x 40mm Bolts	2 - 150mm Zip Ties
16 - M10 Flat Washers	2 - Parking Sensor Housings
12 - M10 Spring Washers	1 - Parking Sensor Harness Kit



LHS Mount Assembly



RHS Mount Assembly

MITSUBISHI TRITON 2024 ON

STAGE 1 - VEHICLE PREPARATION

Test drive vehicle to ensure all driver assists are correctly working and to gauge effectiveness.

Park on a flat level surface.

Apply parking brake and lift bonnet.

Unwrap ECB Protection Bar and disconnect mounts.
Discard bolts.



NOTE: If fitting light bar - fit to bar now as per manufacturers instructions

STAGE 2 - TOP RADIATOR COVER

Remove top radiator cover - eight (8) x push pull clips.



STAGE 3 - REMOVE GRILLE

Between head lights, remove two (2) x push pull clips.

Gently pull centre away from car.

There are two (2) x side clips (per side) retaining the grille to the headlights.

Six (6) x plastic clips retain the grille to the bumper.

Remove grille.



NBM166SY

STAGE 4 - INNER GUARD

Remove three (3) x 10mm head bolts and four (4) x push pull clips (per side) from inner guard.



STAGE 5 - UNDERSIDE

From underside, remove two (2) x push pull clips and two (2) x 10mm head bolts (per side).



STAGE 6 - FOG LIGHT COVER

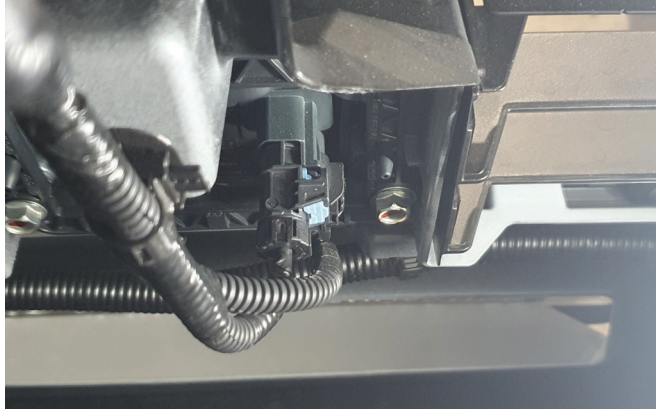
Gently unclip fog light surround to expose 10mm head bolt. Remove bolt.



MITSUBISHI TRITON 2024 ON

STAGE 7 - WIRING HARNESS

Disconnect sonar and camera.

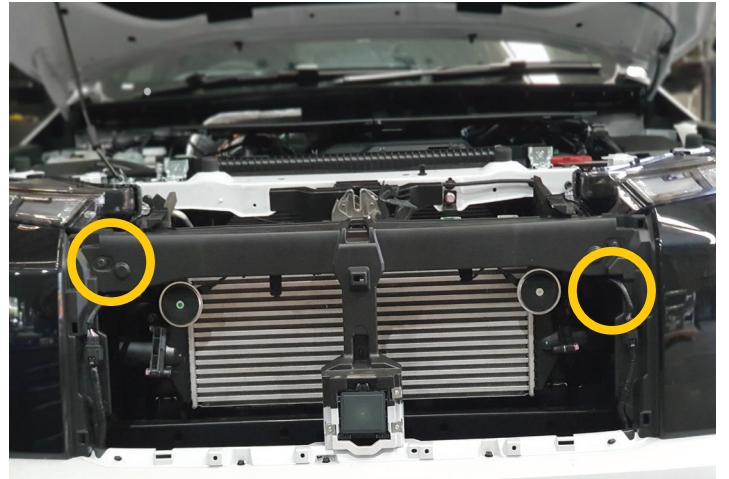


Disconnect harness on each side of radiator opening.



STAGE 8 - BUMPER REMOVAL

Each side of head light, remove one (1) x 10mm head bolt per side and gently remove bumper from vehicle.



STAGE 9 - FOAM SUPPORT

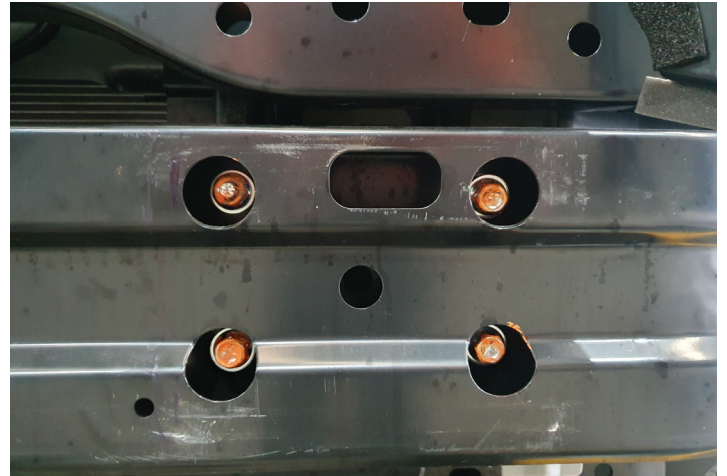
Remove polystyrene infill, two (2) x plastic scrivets from under side.



NBM166SY

STAGE 10 - UNDERBELLY GUARD

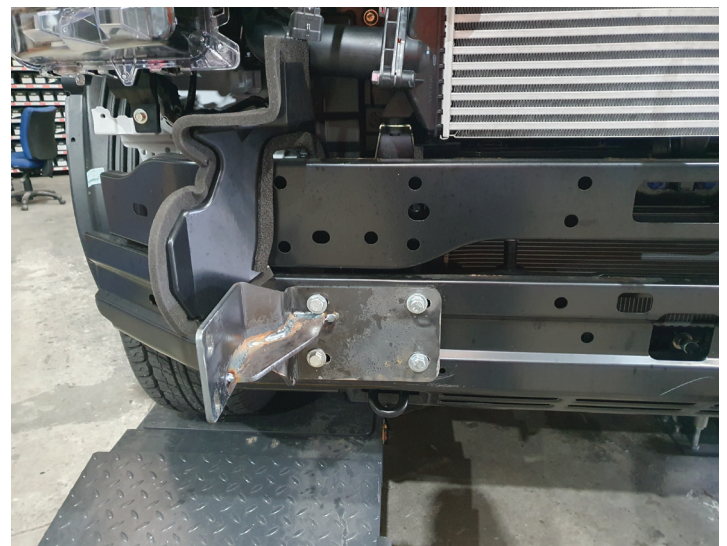
Working one step a time, remove four (4) x 14mm bolts from the impact beam.



Fit steel mounting bracket to the front of the impact beam using M10 x 1.25 x 60 bolts, spring washers and flat washers. **Finger tighten only.**

Set mounts to be inside measurement of mounts on the Protection Bar. Check fit Protection bar to ensure correct spacing.

Align and **tighten all bolts.**



STAGE 11 - DISCONNECT PARKING SENSORS

Remove two centre parking sensors from bumper.

Connect parking sensor extension harness (supplied) to the center parking sensors connectors.

Feed harness extensions through bumper.



MITSUBISHI TRITON 2024 ON

STAGE 12 - BUMPER TRIM

Using template provided, cut bumper with jigsaw or similar. **Mask area to be trimmed to avoid excess damage.**

NOTE: Check scale as some photocopiers may vary.



STAGE 13 - REFIT BUMPER

Replace bumper in reverse of steps 2 to 7.

STAGE 14 - PARKING SENSORS

Place parking sensors in housings on Protection Bar.

Install zip ties on rear. **Do not over tighten.**

Fit number plate to Protection Bar using self drilling screws.



NBM166SY

STAGE 15 - INSTALL PROTECTION BAR

Fit Protection Bar to mounting brackets using M10 x 1.5 x 40mm bolts, M10 flat washers, M10 spring washers and M10 x 1.5 nuts.

Align bar and **tighten all bolts.**



STAGE 16 - CHECK SAFETY FEATURES

Connect sensors.

Check all safety features.



FINAL CHECKS

ENSURE NUMBER PLATE IS CLEARLY VISIBLE

NOTE: When fitting/refitting the licence plate to the vehicle, ensure there is no obstruction to licence plate vision in accordance with local authorities. If required relocate licence plate to an alternate location.

FURTHER VFPS NOTES

1. Do not attach VFPS to the vehicle using anchorages not intended for this purpose (e.g. engine mounting bolts)
2. Do not use this product for any vehicle make or model, other than those specified by the VFPS manufacturer
3. Do not remove the plaque or label from the VFPS
4. Do not modify the structure of the VFPS in any way
5. No accessory or fitment should project forward of the VFPS forward profile

IMPORTANT INFORMATION

Periodically check bolts and nuts for correct tightness, especially if traveling on rough roads.



1800 069 145
WWW.ECB.COM.AU
29 SNOOK ST CLONTARF, QLD 4019

REPLACES: N/A
REVISED: 27.06.24