



INSTALLATION GUIDE

FORD RANGER WILDTRACK | EVEREST

06-2022_{ON}

PN: EDF186SY



3 HOOP BAR
VEHICLE FRONTAL PROTECTION SYSTEM (VFPS)
FOR AIR BAG & ADR COMPLIANT VEHICLES

INDEX

PAGE 3 - 4

Installation Kit

PAGE 5

Stage 1 - Vehicle Testing and Preparation

Stage 2 - Radiator Cover

Stage 3 - Grille Removal

PAGE 6

Stage 4 - Underside Bumper

Stage 5 - Inner Guard

Stage 6 - Guard/Bumper Join

PAGE 7

Stage 7 - Number Plate Cover

Stage 8 - Inner Grille

Stage 9 - Camera

PAGE 8

Stage 10 - Bumper Removal

Stage 11 - Sonar Cover

Stage 12 - Bumper Support

PAGE 9

Stage 13 - Sonar

Stage 14 - Lower Cooler

Stage 15 - Bumper Support

PAGE 10

Stage 16 - Horns

Stage 17 - Radiator Shroud

Stage 18 - Tow Hook

PAGE 11

Stage 19 - Recovery Hooks

Stage 20 - Recovery Hooks

Stage 21 - Mount Fitment

PAGE 12

Stage 22 - Winch Installation

Stage 23 - Parking Sensors

Stage 24 - Parking Sensors

PAGE 13

Stage 25 - Fog Lights/ Sonar Mount

Stage 26 - Camera

Stage 27 - Sonar

PAGE 14

Stage 28 - Clip Lock

Stage 29 - Trim Bumper

Stage 30 - Refit Bumper

PAGE 15

Stage 31 - Protection Bar Fitment

Stage 32 - Connect Camera/Lights/Sonar

Stage 33 - Underbody Guards

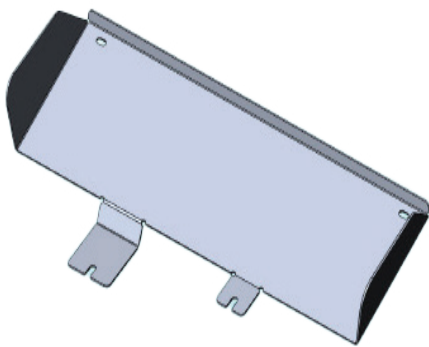
Stage 34 - Reconnect Battery and Safety Checks

PAGE 16

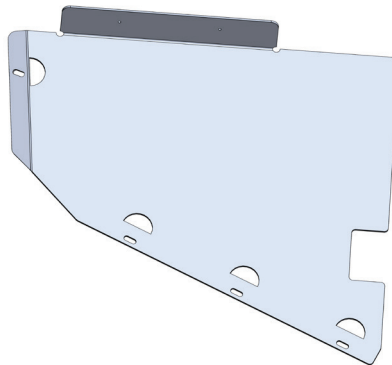
Final Checks

INSTALLATION KIT

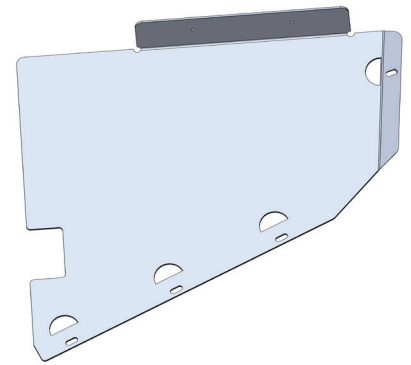
1 - Winch Mount	10 - M8 Flat Washers
1 - Pair Recovery Hooks	10 - M8 Spring Washers
1 - Control Box Mount (ECF185_CB4M)	5 - M8 Nuts
4 - 3mm Steel Washer Plates Three Holes (EAF185_TW3M)	20 - M6 X 25mm Bolts
2 - 30mm Hole, 3mm Steel Washer Plate (30 X 3 Flat Steel Washer)	40 - M6 Flat Washers
1 - Camera Housing - 1 X Housing - 1x Rear Clip - 2 X Mounts (IC23FORACAMH)	20 - M6 Nyloc Nuts
2 - Rubber Tube Gaskets (IC21LCBASEGASKET)	3 - M5 X 20mm Bolts
2 - M12 X 1.75 X 120mm Bolts	6 - M5 Flat Washers
8 - M12 X 1.75 X 40mm Bolts	3 - M5 Nyloc Nuts
20 - M12 Flat Washers	2 - 8-18 X 12mm Self Drilling Screws
10 - M12 Spring Washers	1 - Fog Light Kit (ICLEDCARWAYFOG)
10 - M12 X 1.75 Nuts	2 - Bumper Light Trims
2 - M10 X 1.5 X 40mm Bolt	4 - Parking Sensor Housings (Fitted To Bar)
2 - M10 X 1.25 X 30mm Bolts	2 - 350mm Lengths 3mm Clip Lock
4 - M10 Flat Washers	10 - 150mm Zip Ties
4 - M10 Spring Washers	1 - Number Plate Hinge Bracket Part G Assembled To H
10 - M8 X 40mm Bolts	1 - Number Plate Hinge Bracket Part H Assembled To G
10 - 5/16 X 1 1/4 Flat Washers	



Center Underbelly Guard
ECF185_CG4A

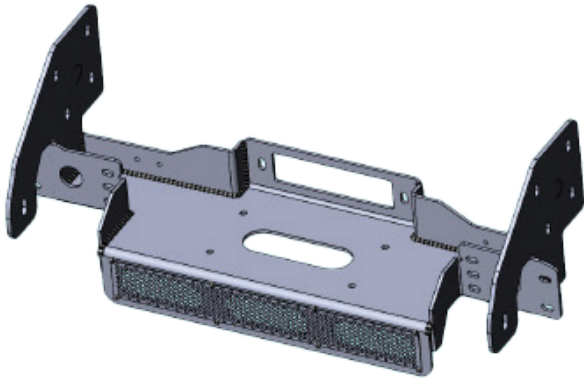


Side Underbelly Guard R/H
(ECF185_U3A)

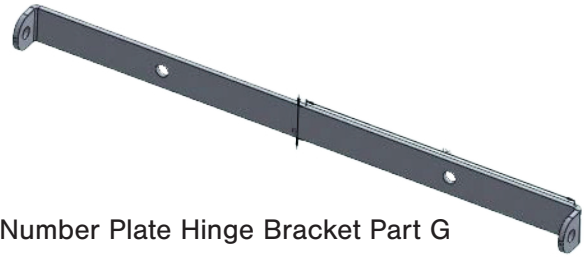


Side Underbelly Guard L/H
(ECF185SY_U3A)

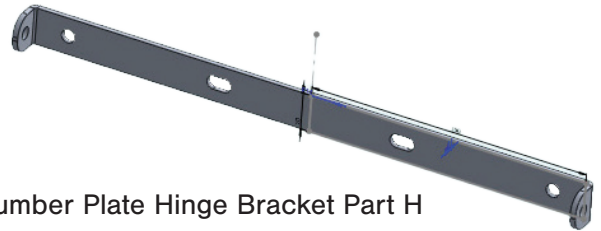
INSTALLATION KIT



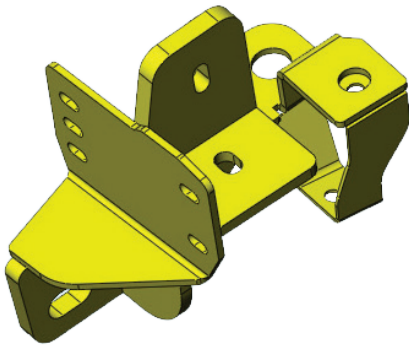
ECF Winch Frame Assembly
(YECF185S)



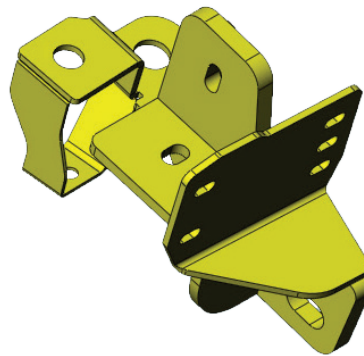
Number Plate Hinge Bracket Part G



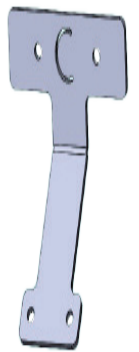
Number Plate Hinge Bracket Part H



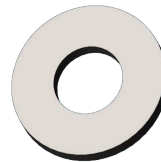
Recovery Hook
(EAF185_RHS)



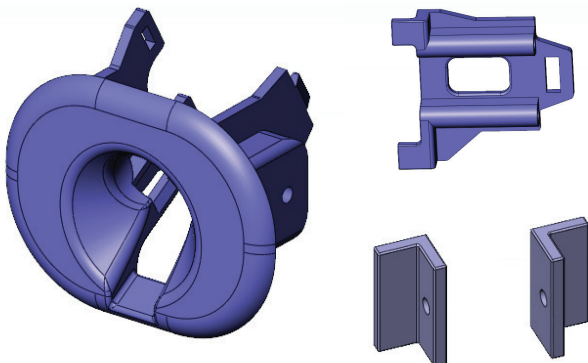
Recovery Hook
(EAF185_LHS)



Control Box Mount
ECF185 CB4M



Flat Steel Washer 30 X 12 X 3
(30 X 3 Flat Steel Washer)



1x Housing - 1x Rear Clip - 2 X Mounts
IC23FORACAMH



8mm Steel Spacer Plates
(NBF185_S8M)



Three Hole Washer
EAF185_TW3M

FORD RANGER WILDTRACK | EVEREST 06-2022 ON

STAGE 1 - VEHICLE TESTING

Test drive vehicle to ensure all driver assists are correctly working and to gauge effectiveness
Park on a flat level surface.

Apply parking brake and lift bonnet.

Unwrap ECB Protection Bar and disconnect mounts. Discard bolts.

DISCONNECT BATTERY.



STAGE 2 - RADIATOR COVER

Remove radiator cover 13 plastic scrivets.

Remove plastic cover.

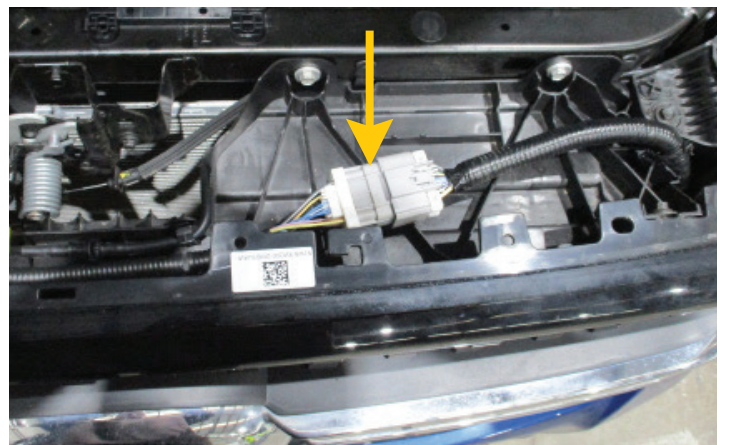
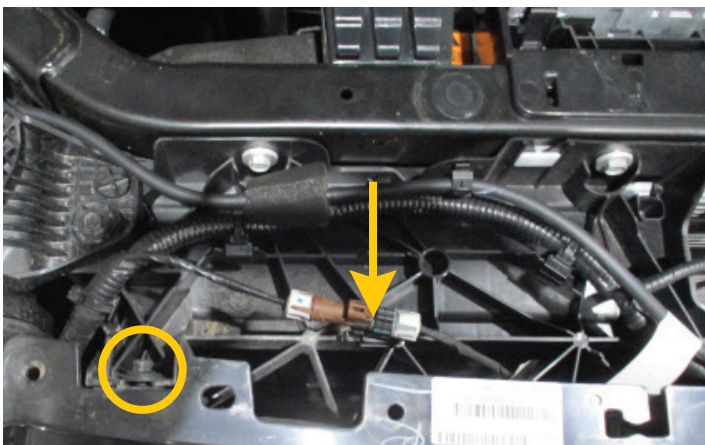


STAGE 3 - GRILLE REMOVAL

On rear of grille beside headlights remove two (2) x 8mm head bolts (1 per side).

Disconnect parking sensor/sonar harness.

Remove main plug from top of radiator cover and feed harness down inside behind grille (this is for connection once Protection Bar is fitted).



EDF186SY

STAGE 4 - UNDERSIDE BUMPER

Underside of bumper remove one (1) x T25 Torx screw (per side) and 8mm head bolt (second bolt in from end, per side).



STAGE 5 - INNER GUARD

From inner wheel arch remove four (4) x push pull clips from inner flare (per side).

On inner guard cover, remove three (3) x plastic scrivenets. Remove cover to access inner bumper cover/guard join.



STAGE 6 - GUARD/BUMPER JOIN

Inside of bumper/guard join, remove three (3) x 10mm head bolts (per side).



FORD RANGER WILDTRACK | EVEREST 06-2022 ON

STAGE 7 - NUMBER PLATE COVER

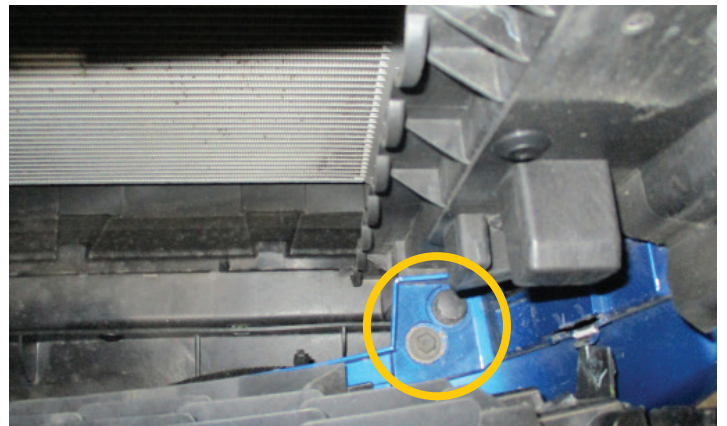
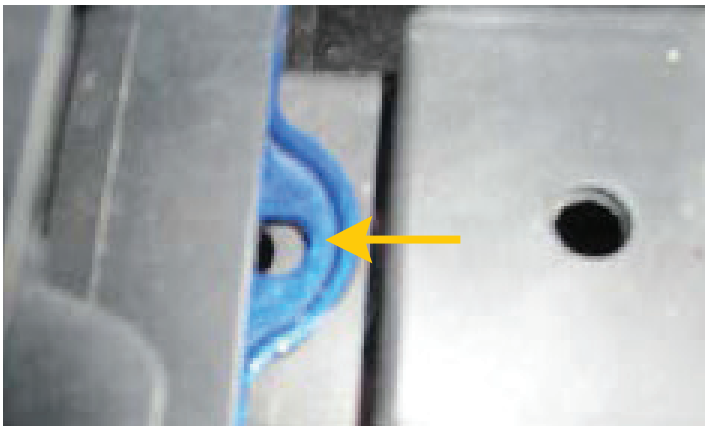
Remove number plate cover two (2) x 8mm head bolts.



STAGE 8 - INNER GRILLE

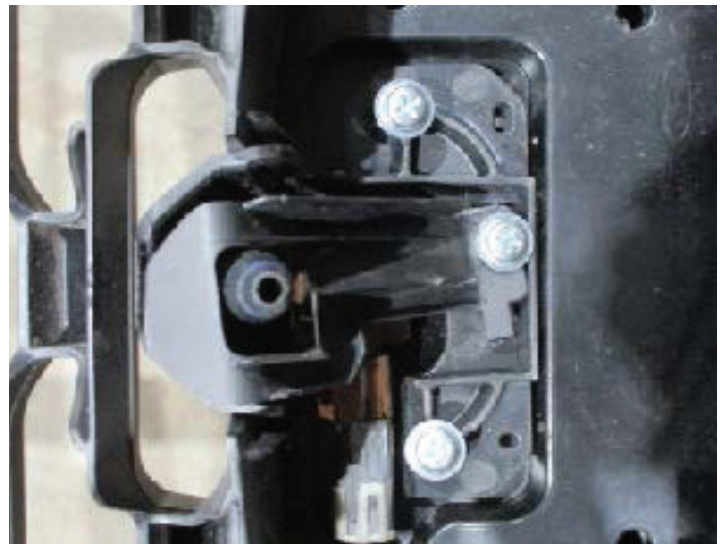
Pull centre grille forward and remove from bumper, three (3) x push pull clips and two (2) x 10mm head bolts.

One clip and bolt per side and one clip in centre.



STAGE 9 - CAMERA

Disconnect camera cable and camera washer hose from rear of camera housing.



EDF186SY

STAGE 10 - BUMPER REMOVAL

Carefully pull flares away from vehicle. From inside inner guard squeeze retaining clip and gently pull down on bumper to remove.



Remove bumper.

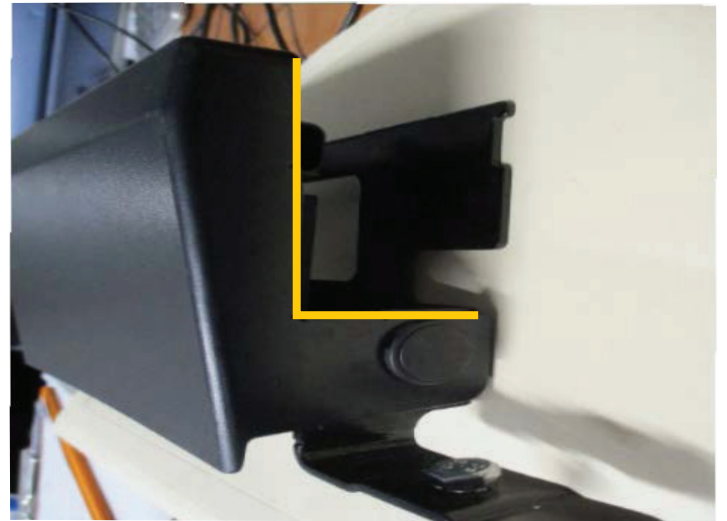


STAGE 11 - SONAR COVER

Remove sonar cover two (2) x push pull clips side of housing.

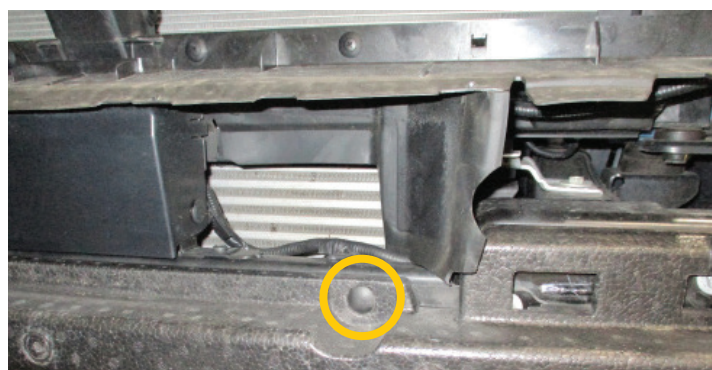
Disconnect harness from sonar, release harness from front bumper support.

Trim cover ready for refitment.



STAGE 12 - BUMPER SUPPORT

Remove foam from bumper infill two (2) x push pull clips.



From front of chassis rail remove six (6) x 13mm head bolts and remove bumper support.

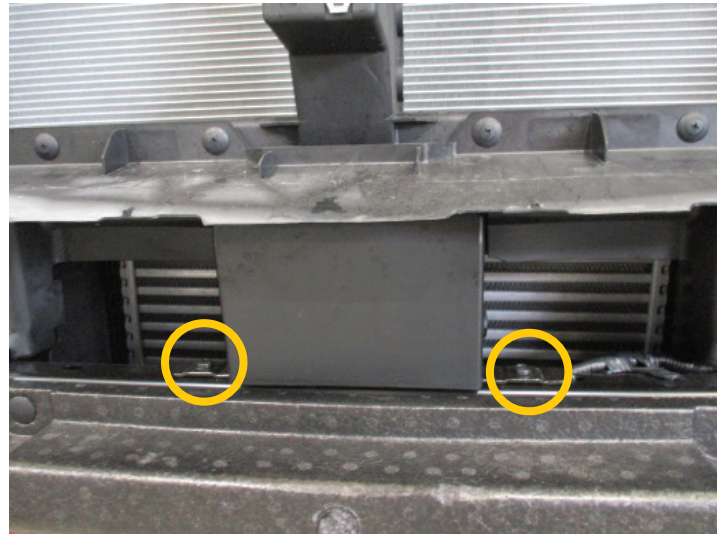


FORD RANGER WILDTRACK | EVEREST 06-2022 ON

STAGE 13 - SONAR

Remove sonar from rail three (3) x T30 Torx screws.
One per side and one at rear.

Refit cover to avoid any damage to sonar.



STAGE 14 - LOWER COOLER

Remove lower intercooler shroud, four (4) x 8mm
head bolts.



STAGE 15 - BUMPER SUPPORT

Remove bumper supports, three (3) x 8mm head
bolts and one (1) x push pull clip (per side).



EDF186SY

STAGE 16 - HORNS

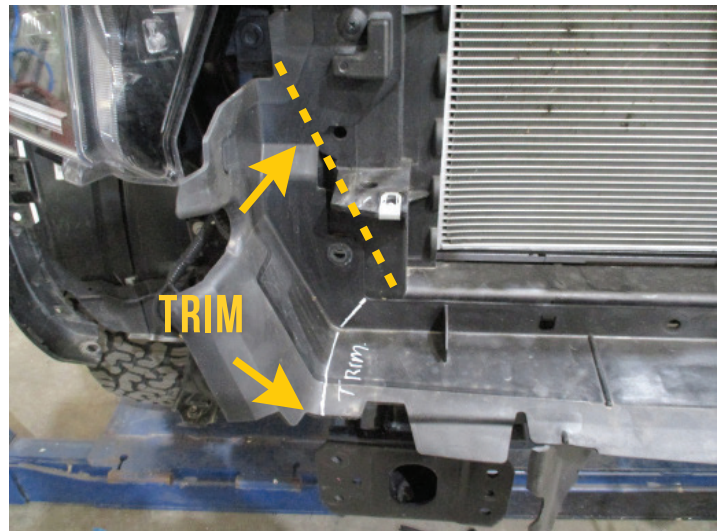
On drivers side, remove horns and turn up side down.

Using original 8mm head bolt place horns where bumper support was removed.



STAGE 17 - RADIATOR SHROUD

Trim radiator shroud to suit steel mount.

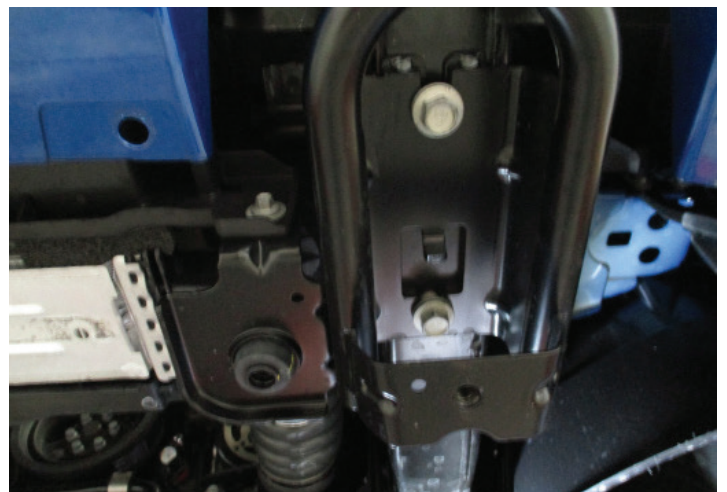


STAGE 18 - TOW HOOK

Loosen two (2) x rear bolts on underbelly guard and remove front two (2) x bolts, then slide guard forward and remove.

From underside of chassis rail remove tow hook / intercooler supports, two (2) x 15mm head bolts (per side). Retain bolts for refitment.

Support intercooler on removal of tow hook brackets.



FORD RANGER WILDTRACK | EVEREST 06-2022 ON

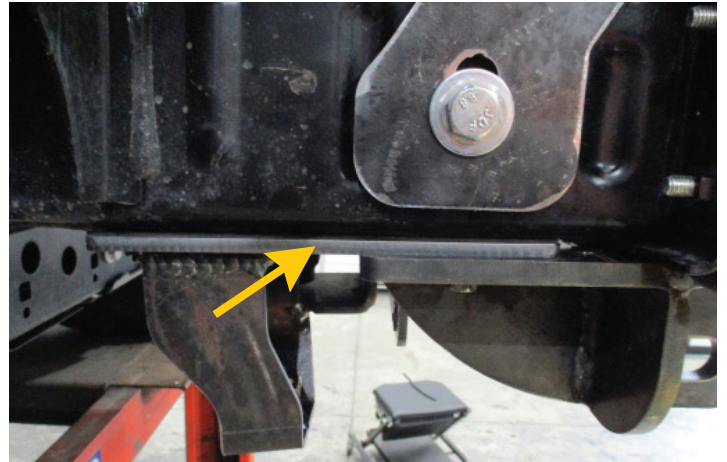
STAGE 19 - RECOVERY HOOKS

Place steel winch frame onto end of chassis rail. Bolts are installed with Rated Recovery Hooks.

Fit Recovery Hooks to underside of chassis rail with 8mm spacer plates between bottom of chassis rail and Recovery Hook.

Replace 15mm head bolt previously removed from tow hook. **Finger tighten only.**

On rear hole place round 3mm thrust washer on bolt before installing.



STAGE 20 - RECOVERY HOOKS

Recovery hooks slide in between steel mount and end of chassis rail, and pickup intercooler. Ensure rubber supports on intercooler sit into holes on Recovery Hook and top of intercooler mount on vehicle.

Install mount to front of chassis rail.

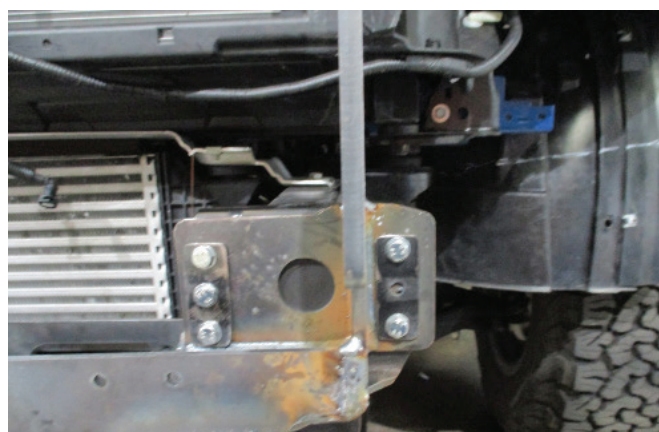
Place M12 x 120mm bolt and M12 flat washer through outer side of chassis rail to hold mount and Recovery Hook in place.



STAGE 21 - MOUNT FITMENT

On front of mount, align holes and fit thrust washers M8 x 40mm bolts, large flat washers and spring washers where captive nuts are used on end of chassis rail. For other holes use M8 x 40mm bolts, flat washers, spring washers and nuts.

Finger tighten only.



Align mounts and recovery hooks. Ensure intercooler is mounted correctly. Use Original bolts to secure underside of Recovery Hook and 3mm steel washer plate in rear hole. Tighten all bolts.

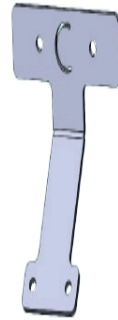


EDF186SY

STAGE 22 - WINCH INSTALLATION

If fitting winch, install winch as per manufacturers instructions.

For Warn winches, a control box mount has been provided to mount to the drivers side of the vehicle using two (2) x M6 x 25 bolts, flat washers and Nyloc nuts.



Control Box Mount

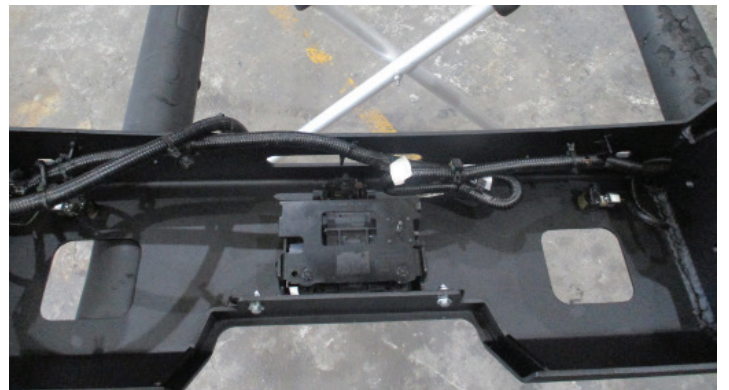
STAGE 23 - PARKING SENSORS

Remove sonar/parking sensor harness from bumper.



Place harness and parking sensors into Protection Bar.

Secure harness into protection bar using zip ties provided.



STAGE 24 - PARKING SENSORS

With parking sensor in correct direction, gently place into parking sensor mount with locating pins ratcheting into holding lugs. Push only until front of sensor is aligned with front of parking sensor mount. Silicon seat on parking sensor should seat loosely into front opening.

Secure with zip ties. **Do not over tighten** as this may cause sensor to go off.

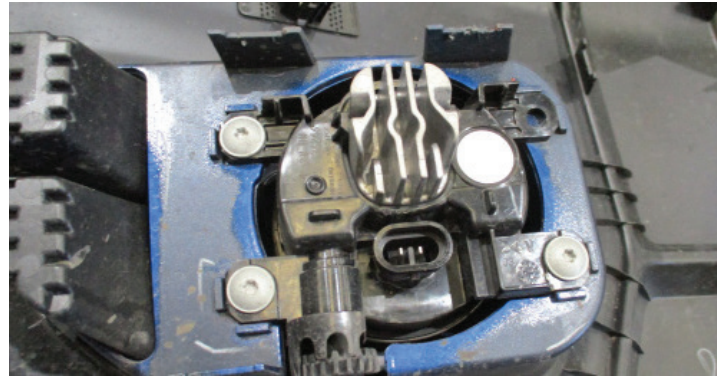
FORD RANGER WILDTRACK | EVEREST 06-2022 ON

STAGE 25 - FOG LIGHTS/SONAR MOUNT

Remove fog lights from bumper three (3) x T25 Torx screws.

Fit lights into Protection Bar using M6 x 25mm bolts, flat washers and Nyloc nuts.

Reconnect parking sensors and fog lights.



For Wildtrack and Everest: Lights have been included to replace the small lights in the bumper.

NOTE: Electrical plug wiring on the vehicle may need to be reversed to suit the aftermarket light (vehicle dependent).

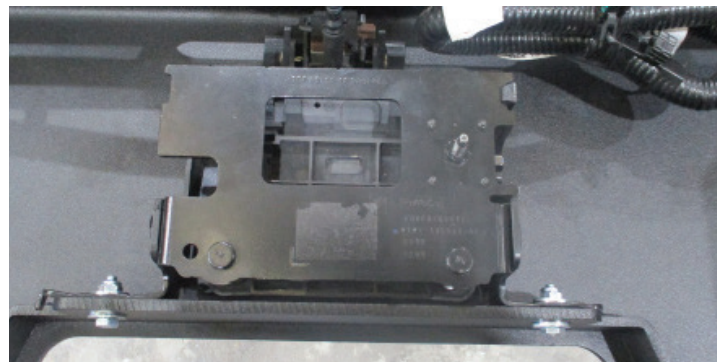
STAGE 26 - CAMERA

Using cutting disc or similar, trim lower section from sonar mount.

Caution needs to be taken to not damage the sonar unit. If you do not feel confident, remove the sonar unit from the mount.

Align and fit sonar to mounting bracket using M6 x 25mm bolt, flat washer and Nyloc nuts.

BLOW FILINGS CLEAR AND TREAT ALL EXPOSED METAL WITH A RUST INHIBITOR.



EDF186SY

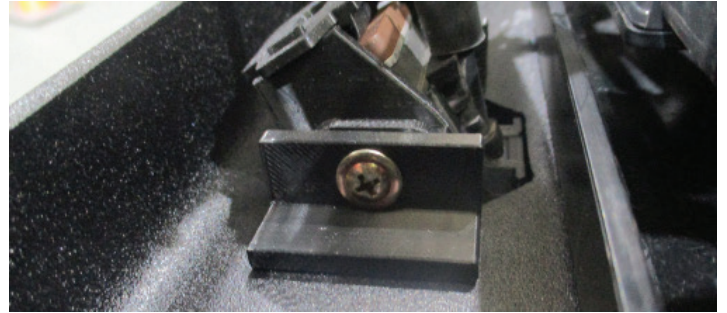
STAGE 27 - SONAR

Place camera into housing, lock into place with rear bracket.



Secure camera into rear of Protection Bar using mounting brackets and (8-10) x 10mm self drilling screws.

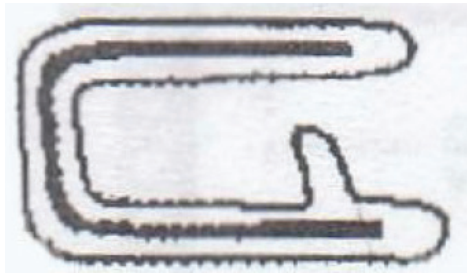
DO NOT OVER TIGHTEN.



STAGE 28 - CLIP LOCK

Attach 6mm clip lock trim (supplied) to top of ECB Protection Bar.

NOTE: Trim off lower edge on an angle so trim will sit flush with end of protection bar.



STAGE 29 - TRIM BUMPER

Mask area to be trimmed to avoid any excess damage.

Trim bumper using template provided with hacksaw or jigsaw.

CAUTION: Double check cut line before trimming bumper.

Place 3mm clip lock trim on cut edge. Where flare meets bumper remove a small section of clip lock from the rear and continue on outside of flare.



FORD RANGER WILDTRACK | EVEREST 06-2022 ON

STAGE 30 - REFIT BUMPER

Refit bumper in reverse as per steps 2 to 10.

Do not install top radiator cover at this time.



STAGE 31 - FIT PROTECTION BAR

Fit Protection Bar to vehicle using M12 x 1.75 x 40mm bolts, M12 flat washers, M12 spring washers and M12 x 1.75 nuts.

Align Protection Bar with vehicle and tighten all bolts.



STAGE 32 - CONNECT CAMERA/LIGHTS/SONAR

Connect fog lights, indi/park/DRL, camera, camera washer, sonar and parking sensors.

Refit top radiator cover.

Hold number plate bracket in position, mark and drill 6mm mounting holes into protection bar.

Install number plate bracket onto front of Protection Bar using two (2) x M5 x 20 screws, flat washers and Nyloc nuts. Align and tighten all screws.

STAGE 33- UNDERBODY GUARDS

Fit side underbelly guards using M6 x 25mm bolts, M6 flat washers and M6 nuts.

NOTE: three front holes use M6 nuts on wire.

Trim inner plastic guards to underbelly guards, tuck guard behind rear of underbelly guard.

Refit underbelly guard, front holes use M10 x 1.5 x 30mm bolts, flat washer and spring washer (supplied).



EDF186SY

STAGE 34 - UNDERBODY GUARDS

Fit center underbelly guard, slip guard into two rear bolts, previously loosened to remove O/E guard.

Using M10 x 1.25 x 30mm bolts, flat washer and spring washer secure to bottom of recovery points align and tighten.



STAGE 34 - RECONNECT BATTERY

Reconnect battery.

Check all safety features are working correctly.



FINAL CHECKS

ENSURE NUMBER PLATE IS CLEARLY VISIBLE

Note: When fitting/refitting the licence plate to the vehicle, ensure there is no obstruction to licence plate vision in accordance with local authorities. If required relocate licence plate to an alternate location.

FURTHER VFPS NOTES

1. Do not attach VFPS to the vehicle using anchorages not intended for this purpose (e.g. engine mounting bolts)
2. Do not use this product for any vehicle make or model, other than those specified by the VFPS manufacturer
3. Do not remove the plaque or label from the VFPS
4. Do not modify the structure of the VFPS in any way
5. No accessory or fitment should project forward of the VFPS forward profile

IMPORTANT INFORMATION

Periodically check bolts and nuts for correct tightness, especially if traveling on rough roads.

WARNING

MAXIMUM LOAD 5000KG PER RECOVERY HOOK, 8000KG WITH BRIDLE STRAP CONNECTING BOTH POINTS

Incorrect use of recovery hooks may result in Vehicle Damage, Personal injury or Death

- Inspect and discard damaged or worn equipment before each use
- Use of a bridle strap is recommended
- Pull angle should not exceed the maximum turning angle of wheels, damage to vehicle may result
- Maximum shackle rating 4.75t complying with AS2741
- ECB recommends taking a 4WD safety course before use



1800 069 145

WWW.ECB.COM.AU

29 SNOOK ST CLONTARF, QLD 4019

REPLACES: N/A
REVISED: 05.09.24