



## INSTALLATION GUIDE

# TOYOTA LANDCRUISER 300 SERIES 7-2021 ON

PN: ECT300SY



SINGLE HOOP BAR  
VEHICLE FRONTAL PROTECTION SYSTEM (VFPS)  
FOR AIR BAG & ADR COMPLIANT VEHICLES

# INDEX

---

## PAGES 3-5

Installation Kit

## PAGE 6

Stage 1 - Vehicle Testing And Preparation

Stage 2 - Lower Bumper Covers

Stage 3 - Lower Bumper Bolts

## PAGE 7

Stage 4 - Inner Guards

Stage 5 - Radiator Cover

Stage 6 - Disconnect Electrics

## PAGE 8

Stage 7 - Grille

Stage 8 - Disconnect Flare Fronts

Stage 9 - Bumper Removal

## PAGE 9

Stage 10 - Bumper Support

Stage 11 - Tie Down Removal

Stage 12 - Grille Support

## PAGE 10

Stage 13 - Camera Removal

Stage 14 - 15 - Camera Re-Fitment

## PAGE 11

Stage 16 - Camera Re-Fitment

Stage 17 - Parking Sensor Relocation

Stage 18 - Parking Sensor Extensions

## PAGE 12

Stage 19 - Fog Light Relocation

Stage 20 - Clip Lock Trim

## PAGE 13

Stage 21 - Bumper Trim

Stage 22 - Grille Trim

## PAGE 14

Stage 23 - Chassis Mounts

Stage 24 - Chassis Supports

Stage 25 - Winch Cradle

## PAGE 15

Stage 26 - Recovery Hook

Stage 27 - Apply Vinyl Wrapping

Stage 28 - If Fitting Centre Tube

## PAGE 16

Stage 29 - Install Protection Bar

Stage 30 - Align Protection Bar

Stage 31 - Connect Electrics

Stage 32 - Side Underbelly Guards

## PAGE 17

Stage 33 - Center Underbelly Guard

Stage 34 - Inner Guard Trim

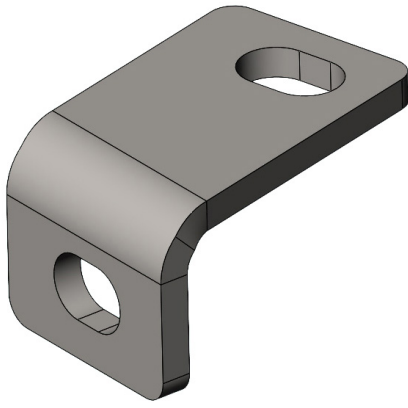
Stage 35 - Connect, Check And Test,  
Warning Label Placement

## PAGE 18

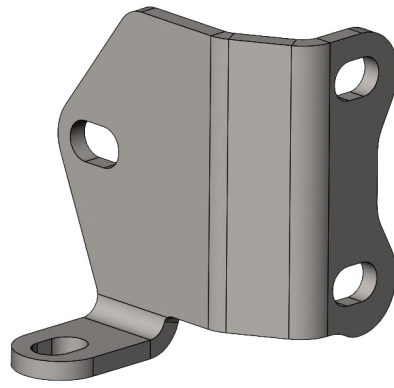
Final Checks

# INSTALLATION KIT

1 - Pair Lower Support Brackets (EAT300_CGA6A)	8 - M10 Spring Washers
2 - Suspension Plates (EAT300_TS8M)	8 - M10 X 1.5 Nuts
1 - Warning Label (ICLAB-RRH 5T-8T)	20 - M6 X 25mm Bolts
2 - M12 X 1.75 X 120mm Bolts	40 - M6 Flat Washers
8 - M12 X 1.25 X 50mm Bolts	20 - M6 Nyloc Nuts
24 - M12 X 1.25 X 40mm Bolts	2 - 8-18 X 12mm Self Drilling Screws
50 - M12 X 29 X 2.5mm Flat Washers	2 - Parking Sensor Extension Harness (IC21TOLCSP1H)
30 - M12 Spring Washers	1 - 2800 Mm Length 6mm Clip Lock
20 - M12 X 1.25 Nuts	2 - 550mm Length 3mm Clip Lock
2 - M12 X 1.75 Nuts	25 - 150mm Zip Ties
2 - M10 X 1.5x50mm Bolt	2 - Rubber Tube Gaskets (IC21LCBASEGASKET)
6 - M10 X 1.5x40mm Bolt	2 - Black Vinyl Wrapping Stickers
14 - M10 Flat Washers	1 - LC300 Cut Template (PACKAGED IN ENVELOPE)



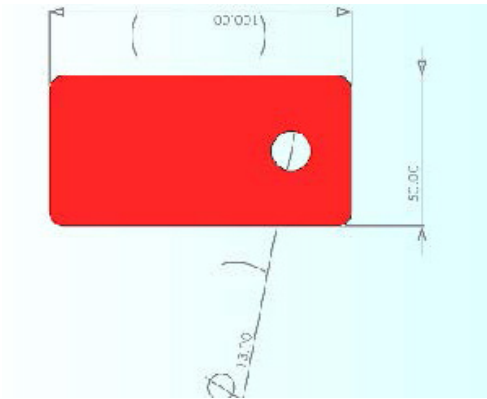
LOWER SUPPORT MOUNT  
(EAT300\_CGA6A)



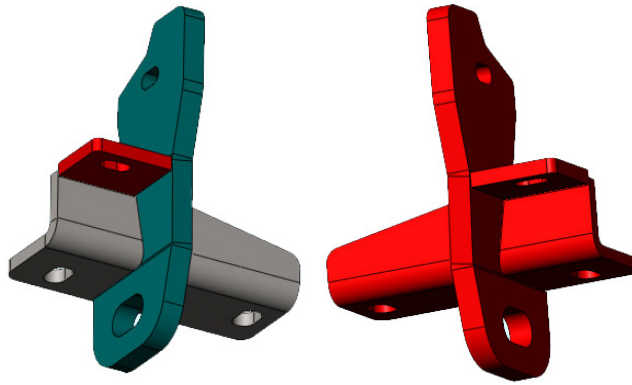
INNER SUPPORT MOUNT  
(EAT300\_CHC6A)



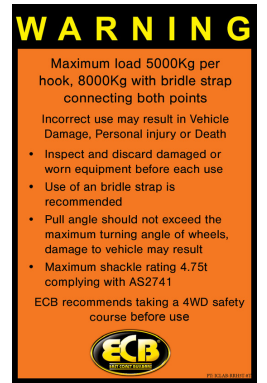
OUTER SUPPORT MOUNT  
(EAT300\_CHB6A)



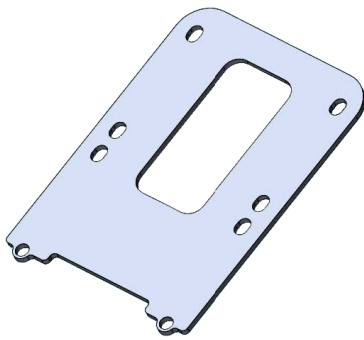
SUSPENSION SPACER  
(EAT300\_TS8M)



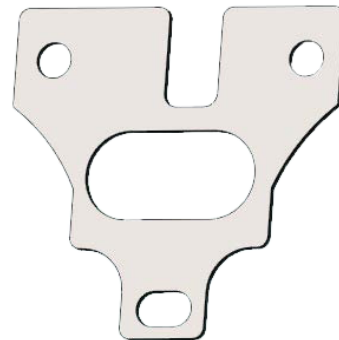
RECOVERY HOOKS  
LEFT & RIGHT



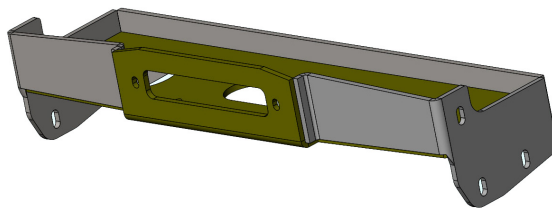
WARNING STICKER  
(ICLAB-RRH 5T-8T)



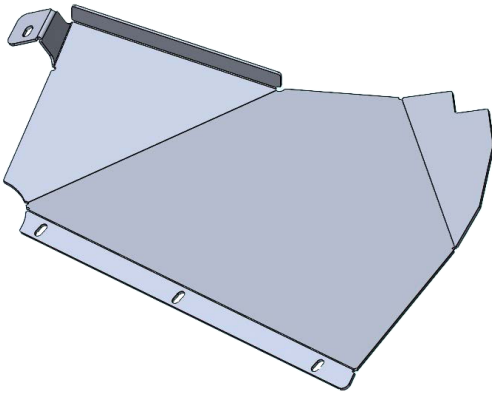
CONTROL BOX MOUNT  
(EAT300\_CBM5A)



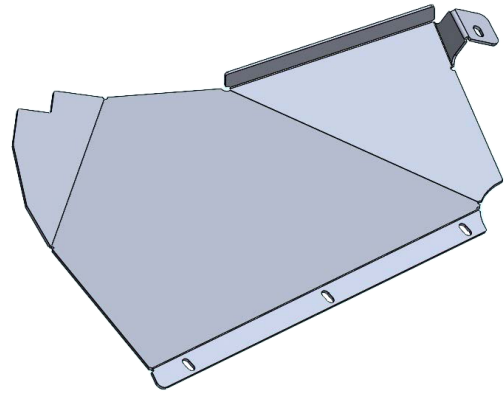
MOUNT SPACER PLATES  
(EAT300\_EP3M)



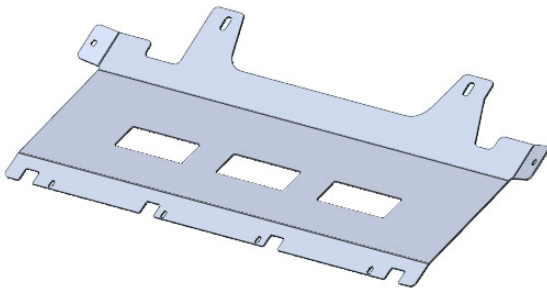
WINCH FRAME  
(YEAT300 WINCH FRAME ASSEMBLY)



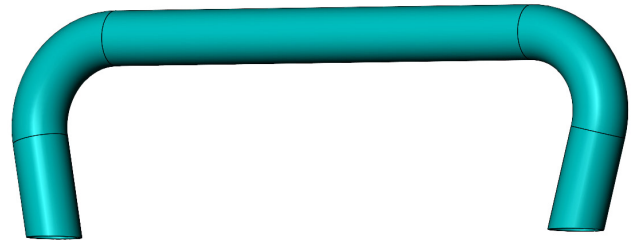
RH SIDE UNDERBELLY SKIRT  
(EAT300\_US3A)



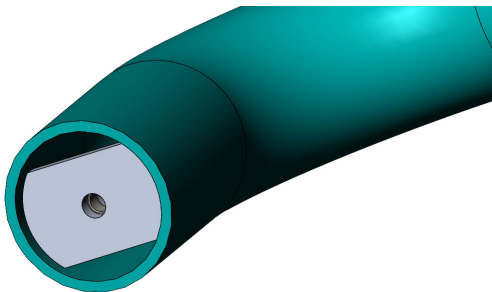
LH SIDE UNDERBELLY SKIRT  
(EAT300\_US3A)



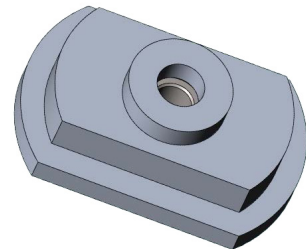
CENTER UNDERBELLY GUARD  
(EAT300\_GA3A)



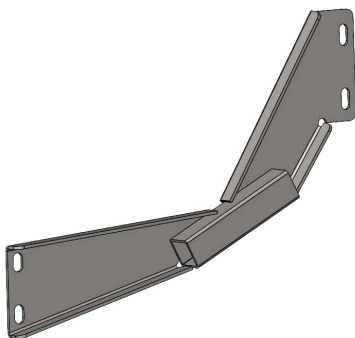
76MM CENTER TUBE  
(ATUECT300)



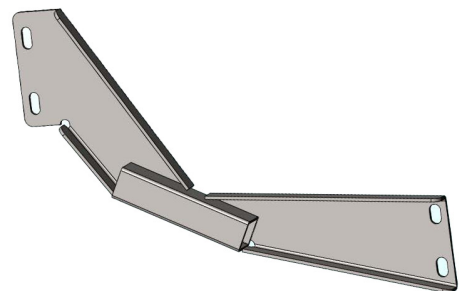
CENTER TUBE RECEIVER



76MM CENTER TUBE PLUG



LH WING SUPPORT



RH WING SUPPORT

# TOYOTA 300 SERIES LC 7-21<sub>ON</sub>

## STAGE 1 - VEHICLE TESTING AND PREPARATION

Test drive vehicle to ensure all driver assists are correctly working and to gauge effectiveness. Park on a flat level surface.

Apply parking brake and lift bonnet.

Unwrap ECB Protection Bar and disconnect mounts. Discard bolts.



**TURN VEHICLE IGNITION ON.**

**REMOVE BATTERY COVER AND DISCONNECT BATTERY.**

**NOTE:** Disconnection of electronic parts of this vehicle may disable all safety features, which will require a Toyota dealership to reset settings. As every vehicle is different, disconnection of the battery may not work for every vehicle.

## STAGE 2 - LOWER BUMPER COVERS

From under front of vehicle, remove outer plastic covers, five (5) x 10mm head bolts and one (1) x 12mm Nyloc nut.



## STAGE 3 - LOWER BUMPER BOLTS

From lower edge of bumper, remove four (4) x 10mm head bolts.



## STAGE 4 - INNER GUARDS

Under front wheel arch remove two (2) x push pull clips and one (1) x T25 Torx screw (per side) from inner guards.



## STAGE 5 - RADIATOR COVER

Remove seven (7) x push pull clips from top radiator cover plastic trim and remove.



## STAGE 6 - DISCONNECT ELECTRICS

Disconnect parking sensors/sonar and camera if fitted. Harness on driver side between grille and headlight.



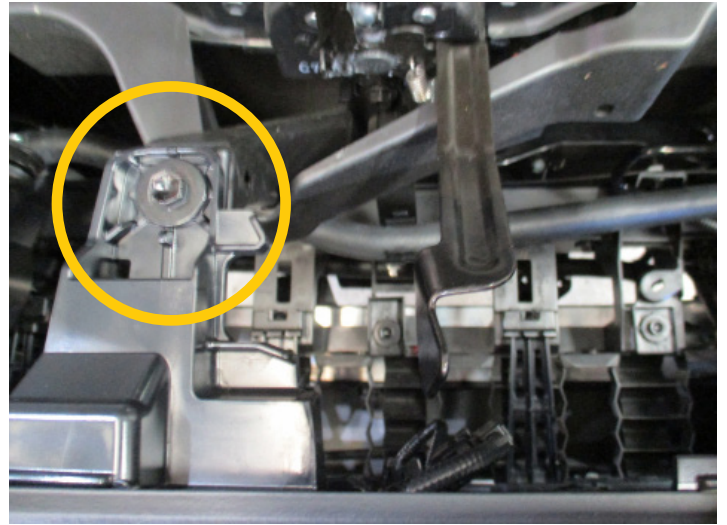
Disconnect headlight washer hose on passenger's side between grille and headlight.



# TOYOTA 300 SERIES LC 7-21<sub>0N</sub>

## STAGE 7 - GRILLE

Between headlights, remove three (3) x 10mm head bolts from rear of grille.

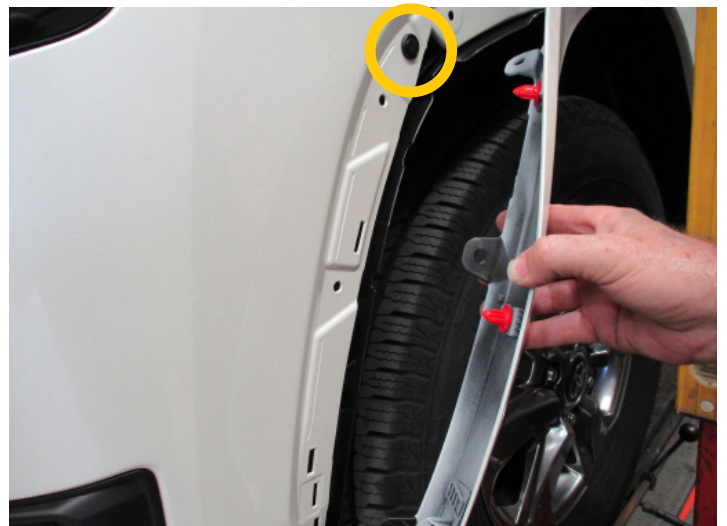


## STAGE 8 - DISCONNECT FLARE FRONTS

Reach between inner guard and guard to release two (2) x lower clips on flares.

Gently pull flares away from outer guard.

Remove one (1) x push pull clip per side from guard/ bumper join.



## STAGE 9 - BUMPER REMOVAL

Gently pull outer wing away from guard and under headlights to release from attachment clips.

Pull centre of grille to release from attachment clips.

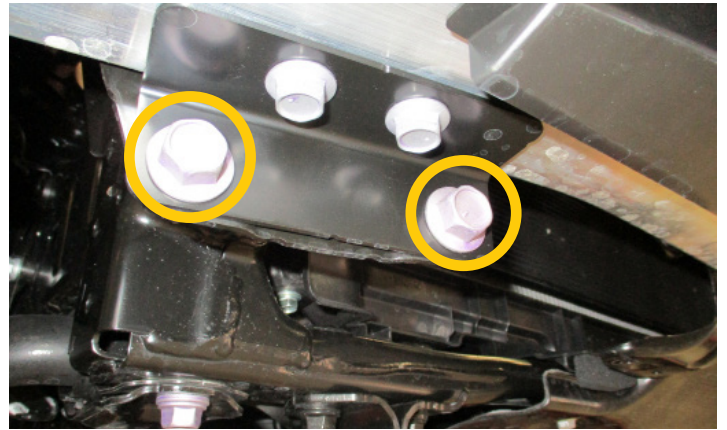
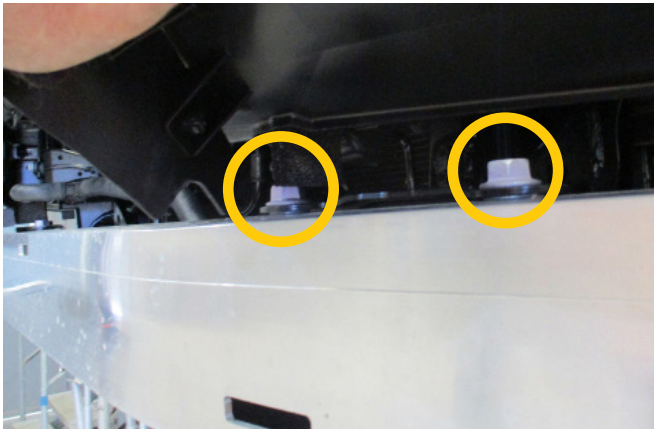
Remove bumper.



## STAGE 10 - BUMPER SUPPORT

Remove four (4) x 17mm bolts top and bottom of alloy bumper support.

Remove alloy bumper support.



## STAGE 11 - TIE DOWN REMOVAL

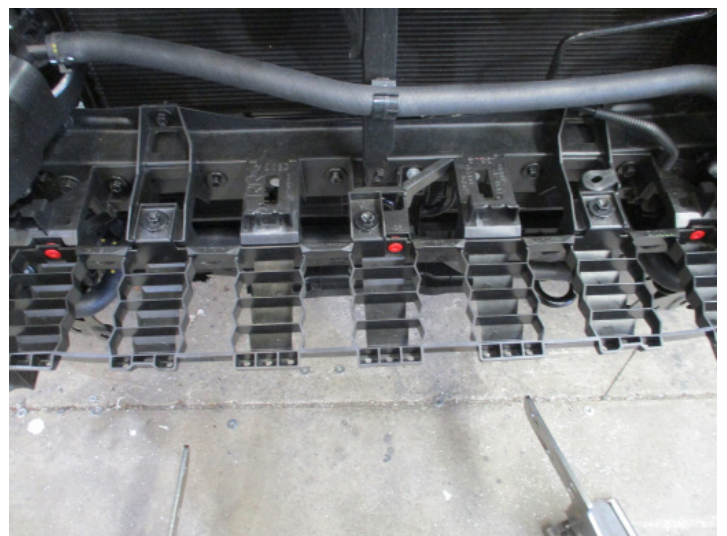
Remove original tie down hooks from underside of cross member, two (2) x 17mm head bolts.



## STAGE 12 - GRILLE SUPPORT

Remove grille support, six (6) x 10mm head bolts.

Pull up and forward to release.



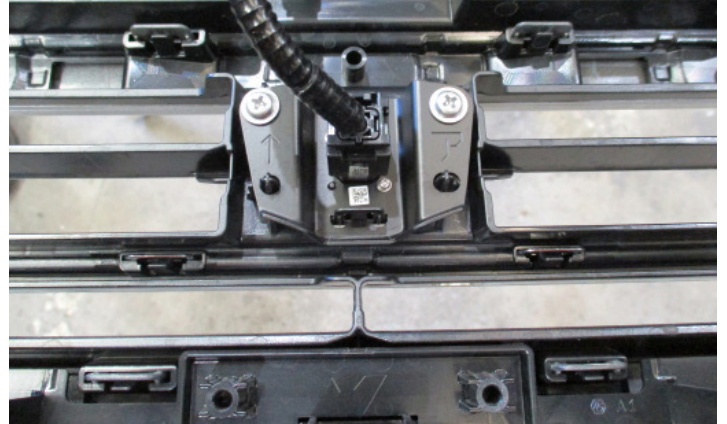
# TOYOTA 300 SERIES LC 7-21<sub>ON</sub>

## STAGE 13 - CAMERA REMOVAL

Disconnect camera and remove two (2) x Phillips head screws.



Unclip outer plastic camera housing.



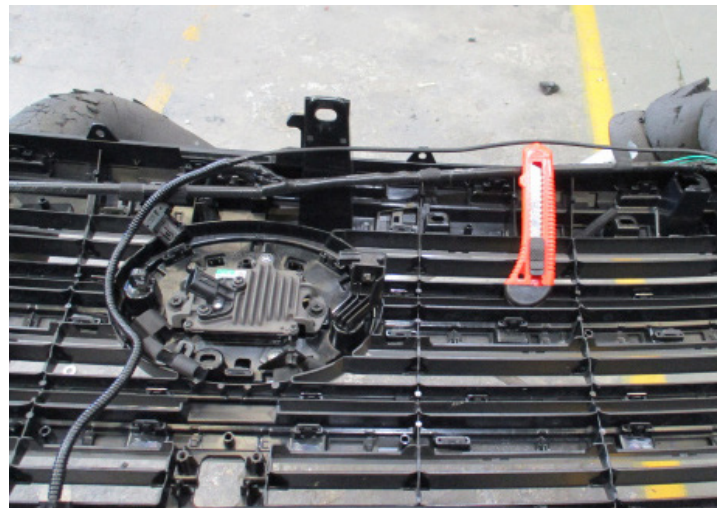
## STAGE 14 - CAMERA RE-FITMENT

Remove wiring from clips across top rear of grille.

Using a sharp knife or similar, carefully slit covering tape ensuring wiring inside is not damaged.

Remove camera wiring back to join where loom separates from top to bottom. Cover wiring with Convoluted tubing (supplied). Re-tape top loom and run wiring down to bottom of grille with other loom.

Attach loom to lower section of grille

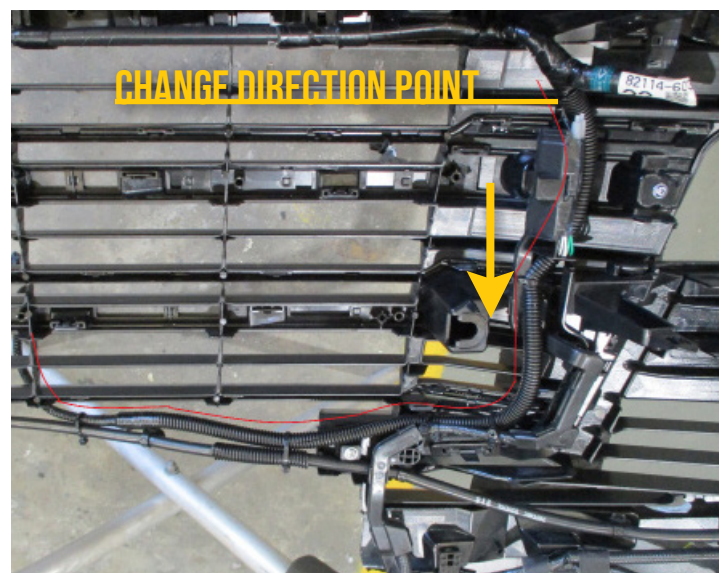


## STAGE 15 - CAMERA RE-FITMENT

Remove camera wiring back to join where loom separates from top to bottom.

Cover wiring with Convoluted tubing (supplied). Re-tape top loom and run wiring down to bottom of grille with other loom.

Attach loom to lower section of grille using zip ties supplied.

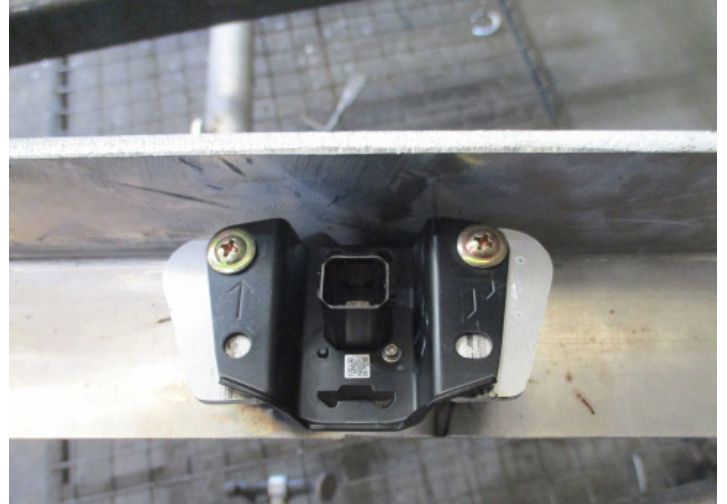


## STAGE 16 - CAMERA RE-FITMENT

Place camera into Protection Bar.

Align camera to hole in cross brace and secure camera to mount using two (2) x self drilling screws.

Ensure top of camera mount is parallel to cross brace.



## STAGE 17 - PARKING SENSOR RELOCATION

Remove parking sensors from bumper.

Place sensor housings into Protection Bar as they were removed from the bumper.

**NOTE:** Failure to place the sensors in the correct location as per the location in the original bumper, will cause the system to fail as the sensors are different from center to outer.



## STAGE 18 - PARKING SENSOR EXTENSIONS

Connect parking sensor extensions (supplied).



# TOYOTA 300 SERIES LC 7-21<sub>0N</sub>

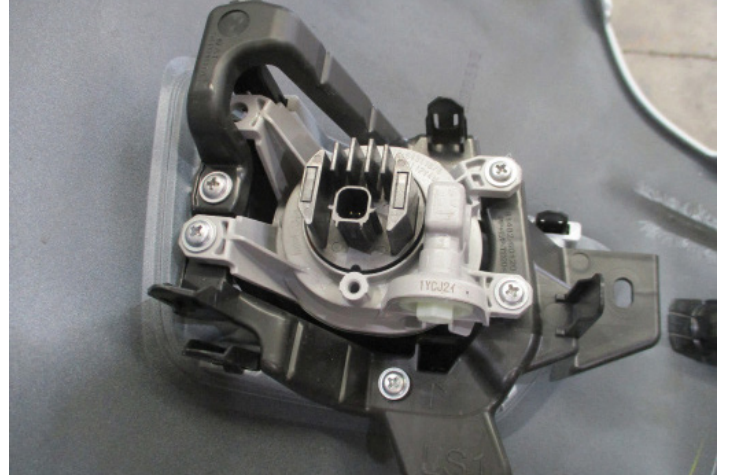
## STAGE 19 - FOG LIGHT RELOCATION

Unclip outer housing from behind the fog lights.

Remove three (3) x Phillips head screws per side.  
Remove fog lights.

Secure into welded bracket in Protection Bar using  
M6 x 25mm bolts, flat washers and Nyloc nuts (nut to  
rear of Protection Bar).

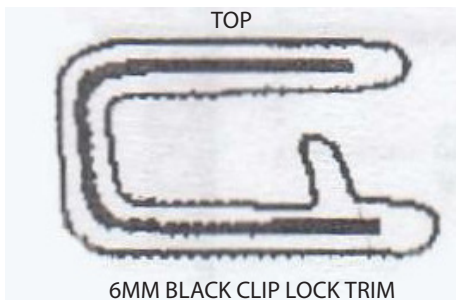
Align lights and tighten.



## STAGE 20 - CLIP LOCK TRIM

Attach 6mm clip lock trim (supplied) to top of ECB  
Protection Bar.

**NOTE:** Trim off lower edge on an angle so trim will sit  
flush with end of Protection Bar.



## STAGE 21 - BUMPER TRIM

Using paper masking tape, mask area to be cut to avoid damage.

As printers vary, check measure template to ensure correct sizing.

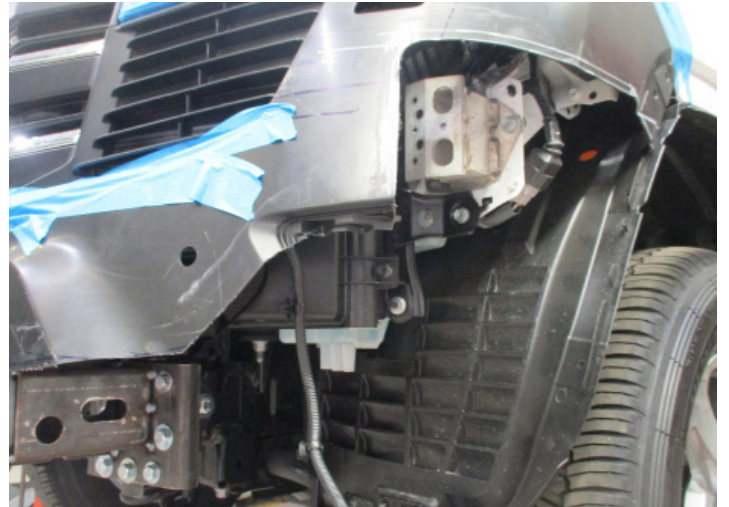
From this instruction, using sharp scissors, carefully cut out template.

Mark and cut bumper using jigsaw, hack saw or similar.

**CAUTION:** Double check all marked lines before trimming.

Trim bumper just below inter-cooler intake on bottom of inter-cooler.

Place 3mm clip lock on trimmed bumper along flare and side bumper. Trim rear from clip lock trim to cross between flare and bumper.



## STAGE 22 - GRILLE TRIM

Trim lower section from grille. At sides, leave clips so grille is able to secure to outer bumper.

Refit bumper in reverse as per steps 4 to 8.



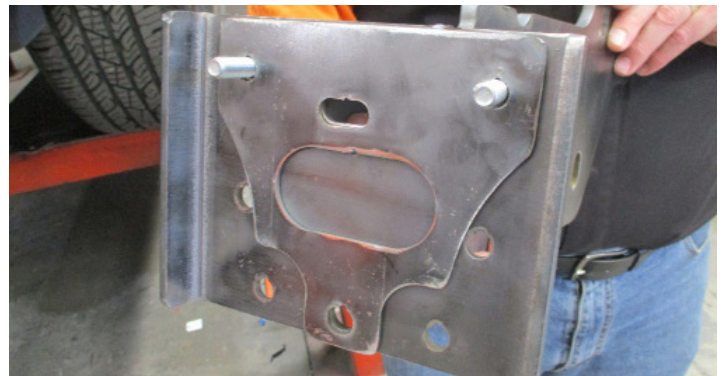
# TOYOTA 300 SERIES LC 7-21<sub>0N</sub>

## STAGE 23 - CHASSIS MOUNTS

Install steel mounting brackets to end of chassis rail with steel spacer plate between mount and chassis rail. Install using M12 x 1.25 x 40mm bolts, flat washer and spring washer into bottom holes with captive nuts.

Place support bracket to inside of chassis rail. Secure to top hole using M12 x 1.25 x 50mm bolt, flat washer, spring washer and M12 x 1.25 nut. In bottom hole use M10 x 1.5 x 40mm bolt, flat washer, spring washer and M10 x 1.5 nut.

**Finger tighten only.**



## STAGE 24 - CHASSIS SUPPORTS

Place lower support into position using M10 x 1.5 x 50mm bolt and flat washer, spring washer and M10 x 1.5 nut through front of chassis rail.

**Finger tighten only.**

Install outer support brackets as per inner bracket.

In top hole through rail and tow hook, use M12x 1.75 x 120mm bolt, flat washer, and M12 x 1.75 Nyloc nut.

**Finger tighten only.**

In bottom hole under rail, secure with M12 x 1.25 x 50mm bolt, flat washer and spring washer.

**Finger tighten only.**



## STAGE 25 - WINCH CRADLE

Fit winch cradle between mounting brackets. Secure two bottom holes with M12 x 1.25 x 40mm bolts, flat washer, spring washer and M12 x 1.25 nut.

**NOTE:** Rear hole is through crash can. **Finger tighten only.**

Check inside measurement of mounts in Protection Bar and use measurement to the outside of steel mounting brackets.

Align cradle and mounts and **tighten all bolts.**

**NOTE:** Check upper holes in cradle to ensure alignment with mount.



## STAGE 26 - RECOVERY HOOK

Remove M12 x 50mm bolt from under chassis rail.

Loosen only sway bar from vehicle to give 8mm to 10mm gap, four (4) x 17mm head bolts. Remove bolts completely from one side.

Place 8mm spacer under rear of sway bar mount and reinstall original equipment bolt.

Install Rated Recovery hook to vehicle using original bolt for Sway Bar using M12 x 1.25 x 40mm bolt, spring washer and flat washer in tow point holes in cross member. Check bolts in holes for fit. Do not fully install other bolts at this time.

**Finger tighten only.** Repeat for opposite side.



## STAGE 27 - APPLY VINYL WRAPPING

Clean remaining coloured sections of bumper with soap and water. Dry and follow with isopropyl alcohol.

Peel rear from vinyl sheet and apply to area on lower section of bumper under grille using a credit card style applicator, sharp knife and a heat gun.

Smooth area to be bubble free on completed item. Edges should be turned under and attached to rear where possible.



## STAGE 28 - IF FITTING CENTRE TUBE

Install top tube to the top of the channel using two (2) x rubber gaskets, M10 x 1.5 x 40 bolts, spring washers and flat washers.

Align tube to top of channel taking care to get rubber gasket straight to tube and tube center to Protection Bar.

### TIGHTEN ALL BOLTS

**NOTE:** Arrow on center hole of rubber gasket points forward on channel.



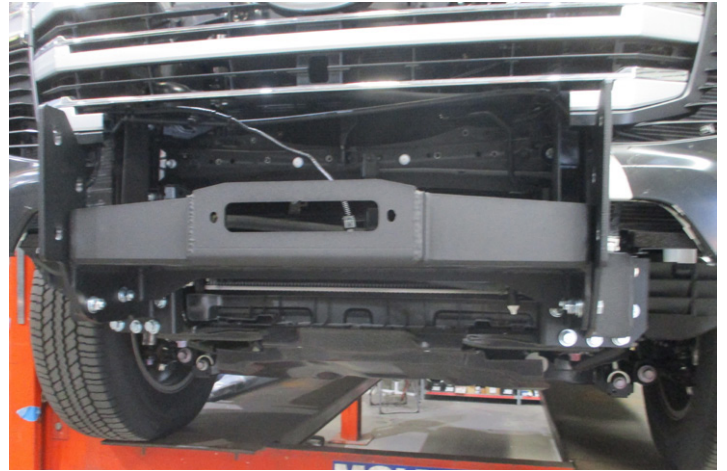
# TOYOTA 300 SERIES LC 7-21<sub>0N</sub>

## STAGE 29 - INSTALL PROTECTION BAR

Fit Protection Bar to mounting brackets.

For the middle rear hole use M12 X 1.25 X 50mm bolt, flat washer, spring washer and M12 x 1.25 nut. In other holes use M12 x 1.25 x 40mm bolt, flat washer, spring washer and M12 X 1.25 nut.

**Finger tighten only.**



## STAGE 30 - ALIGN PROTECTION BAR

Align Protection Bar with vehicle and tighten all bolts.

## STAGE 31 - CONNECT ELECTRICS

Connect fog lights, all parking sensors and camera (if fitted)



## STAGE 32 - SIDE UNDERBELLY GUARDS

Attach side underbelly guards to top of end skirt and lower leg of channel using M6 x 25mm bolts, flat washers and Nyloc nuts.

Place center underbelly guard to top of mid skirt and secure front holes using M6 x 25mm bolts, flat washers and Nyloc nuts.

In rear holes of center underbelly, use M12 x 1.25 x 40mm bolts, flat washers and spring washers securing underbelly guards and tow hooks together.

On wings of center guard, drill a 6.5mm hole and secure with M6 x 25mm bolt, flat washers and Nyloc nut.



## STAGE 33 - CENTER UNDERBELLY GUARD

Place center underbelly guard to top of mid skirt and secure front holes using M6 x 25mm bolts, flat washers and Nyloc nuts.

In rear holes of center underbelly use M12 x 1.25 x 40mm bolts, flat washers and spring washers securing underbelly guards and tow hooks together.

On wings of centre guard, drill a 6.5mm hole and secure with M6 x 25mm bolt, flat washers and Nyloc nut.



## STAGE 34 - INNER GUARD TRIM

Push inner guards up into wheel well. Mark and trim inner guards.

Tuck inner guards behind the rear of the underbelly guard and behind side of alloy Protection Bar.



## STAGE 35 - CONNECT, CHECK AND TEST, WARNING LABEL PLACEMENT

### RECONNECT BATTERY

Test drive vehicle to ensure all safety features are working correctly.

Install warning label to inside of driver's door.



# FINAL CHECKS

## ENSURE NUMBER PLATE IS CLEARLY VISIBLE

**Note:** When fitting/refitting the licence plate to the vehicle, ensure there is no obstruction to licence plate vision in accordance with local authorities. If required relocate licence plate to an alternate location.

## FURTHER VFPS NOTES

1. Do not attach VFPS to the vehicle using anchorages not intended for this purpose (e.g. engine mounting bolts)
2. Do not use this product for any vehicle make or model, other than those specified by the VFPS manufacturer
3. Do not remove the plaque or label from the VFPS
4. Do not modify the structure of the VFPS in any way
5. No accessory or fitment should project forward of the VFPS forward profile

## IMPORTANT INFORMATION

Periodically check bolts and nuts for correct tightness, especially if traveling on rough roads.

### **MAXIMUM LOAD 5000KG PER RECOVERY HOOK, 8000KG WITH BRIDLE STRAP CONNECTING BOTH POINTS**

#### **Incorrect use of recovery hooks may result in Vehicle Damage, Personal injury or Death**

- Inspect and discard damaged or worn equipment before each use
- Use of a bridle strap is recommended
- Pull angle should not exceed the maximum turning angle of wheels, damage to vehicle may result
- Maximum shackle rating 4.75t complying with AS2741
- ECB recommends taking a 4WD safety course before use





---

1800 069 145  
WWW.ECB.COM.AU  
29 SNOOK ST CLONTARF, QLD 4019

REPLACES: N/A  
REVISED: 26.06.24