



**WORLD'S BEST  
ALLOY BULLBARS**

**East Coast Bullbars (ECB Pty Ltd)**

Tel: 07 3897 5700

Fax: 07 3283 1168

ecb@ecb.com.au www.ecb.com.au

29 Snook St  
Clontarf QLD 4019  
Australia

Po Box 122  
Margate QLD 4019  
Australia

## **EAV48SY**

REPLACES: 17.09.18

REVISED: 03.04.19

### **FITTING INSTRUCTIONS**

#### **VOLKSWAGON AMAROK V6 1/17on ECB WINCH COMPATIBLE BIG TUBE™ BAR WITH FOG LIGHTS AND PARKING SENSORS VEHICLE FRONTAL PROTECTION SYSTEM (VFPS) FOR AIR BAG & ADR COMPLIANT VEHICLES**

Check installation hardware before commencing.

- Special Requirements: T25 and T30 Torx drivers
1. Lift bonnet.
  2. Remove two plastic clips and two T30 Torx head screws from top of grille. **See figure 1.**
  3. From under wheel arches, remove three T25 Torx head screws and two T30 Torx head bolts. Under bonnet, remove four 3mm allen head plastic screw clips. Remove centre number plate two T25 Torx head screws behind number plate (if fitted). Two 10mm head screws from rear wing. Gently pull sides of bumper away from vehicle to unclip from retaining clips, and down on lower rear corner to unlock from retaining lug at front of inner guard. Disconnect fog lights and sensor wiring plug (if fitted) and remove air sensor from bumper as removing bumper.
  4. Carefully remove parking sensors and parking sensor wiring harness from coloured section of bumper. **See figure 2.**
  5. Remove lower polystyrene bumper infill.
  6. Remove two grey push pull clips from front of chassis cross member into lower air dam. Carefully unclip lower air dam from front of radiator and remove.
  7. Remove outer bumper stays from radiator support, two 10mm head bolts.
  8. Remove bumper reinforcement by removing four T30 torx head screws from under headlights. **See figure 3.**
  9. Disconnect indicator and parking lights on vehicle. Install ECB quick click wiring harnesses (supplied) between disconnected harness and indicator / park lights on vehicle. Run wiring out from under lights ensuring clearance from sharp edges and moving parts.
  10. Fit ECB winch mount (supplied) to front of bumper support, rear leg to inside of chassis rails. **See figure 4.** Use four M12 x 40 bolts, flat washers, spring washers and nuts for front (supplied), one M12 x 40 bolt and washer on 300mm wire, flat washer, spring washer and nut (supplied) for passengers side inner of chassis rail and one M8 x 30 bolt, flat washer, spring washer (and nut and washer on wire on some models) (supplied) for drivers side inner chassis rail. Inside of chassis rails are accessible from welded connection area between chassis rail and front cross member. **See figure 5. Finger tighten only.**
  11. Centralise ECB winch mount to body of vehicle. **Tighten all bolts.**
  12. Using mounts as a guide, drill two holes per side in front of mount and one hole in rear leg to 13mm. **See figures 6 and 7. Blow filings clear and treat all exposed metal with a rust inhibitor.** Fit four M12 x 40 bolts, flat



**WORLD'S BEST  
ALLOY BULLBARS**

**East Coast Bullbars (ECB Pty Ltd)**

Tel: 07 3897 5700

Fax: 07 3283 1168

ecb@ecb.com.au www.ecb.com.au

29 Snook St  
Clontarf QLD 4019  
Australia

Po Box 122  
Margate QLD 4019  
Australia

washers, spring washers and nuts (supplied) to front drilled holes and two M10 x 35 bolts and washers on 300mm wire, flat washers, spring washers and nuts for chassis rail holes. **Tighten all bolts.**

13. Install fairlead roller onto front of ECB winch frame using M12 x 40 bolts, flat washers, spring washers and nuts (supplied). **Finger tighten only. See figure 8.**
14. Install winch into ECB winch frame according to winch manufacturer's instructions. Fit control box to ECB control box mount and install to winch using worm drive clamps around motor end of winch. Leave control box loose to allow fitment of plastic bumper to vehicle. Wire winch as per manufacturer's instructions. **See figure 9.** **Note:** This kit comes with two control box mounts, one to suit Warn compatible control box and one for mean mother compatible control box. Use control box mount suitable to your winch.
15. Refit bumper reinforcement in the reverse step of 8.
16. Trim attachment points from radiator air dam. **See figure 10.** Refit to bottom of radiator and chassis cross member in original position.
17. Remove flare and brackets from side of bumper. Flares are hot melt secured at front. Slight pressure will break this joint. Trim melted edge with knife to enable flair retainer to release without braking. **See figure 11.**
18. Mask rear edge of plastic bumper to allow marking. Measure and mark 220mm down from top rear corner of plastic bumper. Using 50mm paper masking tape; join this mark to the top outer edge of the fog light opening. **See figure 12.**
19. Double check lines to be cut. Across centre open section of grille, trim vertical bars at top. **See figure 13.**
20. Tape top of flares to avoid damage during cutting. Measure templates to ensure correct sizing. Cut templates from instruction with sharp scissors. Using templates to mark flares. Double check to ensure correctness of marking and trim flares to size. **See figure 14**
21. Refit top section of bumper to vehicle using original equipment screws. **See figure 15.**
22. Use 3mm clip lock trim (supplied) to cover cut edge of flare. Cut inner end of clip lock trim shorter than outer edge to allow full coverage of cut edge. Using Loctite control gel supplied glue front end of clip lock to flare. **See figure 16.**
23. Using Loctite control gel glue (supplied) front edge of flair and remaining retainers to bumper, locate in correct position and hold firmly for 40 seconds. **See figure 17** (ensure both surfaces are free from dirt and grime.)
24. Once glue is dry, screw self-tapper (supplied) through top of flare into flare on guard. **See figure 18.**
25. Fit ECB LED indicator / park lights (supplied) into protection bar as per instructions supplied with the LED indicator kit. **See figure 19.**
26. Attach ECB fog light bracket only to protection bar. Place M6 x 20 bolts, spring washers (supplied) through light mount from inside and attach nut to top. Slide assembly into light mount in Protection bar and centralize light to hole. **TIGHTEN FIRM ONLY.**
27. Fit sensor wiring harness into back of protection bar, loosely zip tie harness into position. Fit sensors into ECB housing on protection bar. **See figure 20. NOTE. Sensors with right angle plug go in inside holes.**



**WORLD'S BEST  
ALLOY BULLBARS**

**East Coast Bullbars (ECB Pty Ltd)**

Tel: 07 3897 5700

Fax: 07 3283 1168

ecb@ecb.com.au www.ecb.com.au

29 Snook St  
Clontarf QLD 4019  
Australia

Po Box 122  
Margate QLD 4019  
Australia

28. Splice ECB fog light wiring harness (supplied) into original wiring harness. Attach load resistors (supplied) across wiring from positive to negative wire. Screw load resistor onto rear of channel plate with two 6g x ¾ screws (supplied) See figure 21. **LOAD RESISTORS GENERATE A LOT OF HEAT; KEEP ELECTRICAL WIRES CLEAR.**
29. Attach 6mm clip lock trim (supplied) to top of ECB protection bar. **NOTE:** Trim off lower edge on an angle so trim will sit flush with end of protection bar. **See figures 22, 23 and 24.**
30. Fit ECB protection bar to outside of ECB steel mounting brackets using ½ x 1 ½ bolts, flat washers, spring washers and nuts (supplied). **Finger tighten only.**
31. Align ECB protection bar. **See figures 25 and 26. Tighten all bolts.**
32. Connect and test vehicle lighting and parking sensors for correct operation.
33. Install centre under body guard to top of skirt lower leg using three M6 x 20 bolts, flat washers and nyloc nuts (supplied). **Finger tighten only. See figure 27.**
34. Install side under body guards (supplied) to top side of skirt lower leg and lower side of centre under body guard using four M6 x 20 bolts, flat washers and nyloc nuts (supplied). Centralise under body guards to vehicle and tighten all bolts. **See figure 28.**
35. Using under body guard as a guide, drill two 6mm holes through vehicles under body guard. Fit M6 x 20 bolts, flat washers and nyloc nuts (supplied). Fit M6 x 20 bolts, flat washers and nyloc nuts (supplied). Use the supplied adaptor plate and self-drilling screws when fitting to a 4-cylinder vehicle. **See figure 29. Blow filings clear and treat all exposed metal with a rust inhibitor.** Tighten all bolts.
36. Trim inner guards to suit rear of under body guards. **See figure 30.** Attach inner guard to rear of under body guard using three 12-14 hex head self-tapping screws (supplied) (per side).
37. Attach ECB fog lights to brackets in protection bar. **TIGHTEN FIRM ONLY. See figures 31 and 32.**

#### **ENSURE NUMBER PLATE IS CLEARLY VISABLE**

**Note:** When fitting/refitting the licence plate to the vehicle, ensure there is no obstruction to licence plate vision in accordance with local authorities. If required relocate licence plate to an alternate location.

#### **Further VFPS Notes:**

- a) Do not attach VFPS to the vehicle using anchorages not intended for this purpose (e.g. engine mounting bolts).
- b) Do not use this product for any vehicle make or model, other than those specified by the VFPS manufacturer.
- c) Do not remove the plaque or label from the VFPS.
- d) Do not modify the structure of the VFPS in any way.
- e) No accessory or fitment should project forward of the VFPS forward profile.
- f) **ENSURE THESE INSTRUCTIONS ARE LEFT WITH VEHICLE OWNER AND/OR OPERATOR.**

#### **IMPORTANT INFORMATION**

Periodically check bolts and nuts for correct tightness, especially if travelling on rough roads



East Coast Bullbars (ECB Pty Ltd)

Tel: 07 3897 5700

Fax: 07 3283 1168

ecb@ecb.com.au www.ecb.com.au

WORLD'S BEST  
ALLOY BULLBARS

29 Snook St  
Clontarf QLD 4019  
Australia

Po Box 122  
Margate QLD 4019  
Australia

## FITTING KIT

1 – ECB winch mount	15 – M6 x 20 bolts
1 – Centre under body guard	28 – M6 flat washers
1 – Pair side under body guards	2 – M6 spring washers
1 – Underbelly adaptor	2 – M6 nut
1 – Warn winch control bracket (WIN_CONT_B4MS) – <b>IN KIT</b>	13 – M6 nyloc nuts
1 – Mean Mother winch bracket(MOTHERCB_B4MS) – <b>IN KIT</b>	2 – 8-gauge x 25 button head self-tappers
2 – 127mm Worm drive hose clamps	4 – 6 g x 3/4 SS screws
18 – M12 x 1.75 x 40 bolts	6 – 12-14 hex head self-tapping screws
36 – M12 flat washers	1 – ECB LED Indicator / Park light kit (ICLED105ECB)
18 – M12 spring washers	1 – Quick Click Indi / Park kit (IC17VWAMIPDH)
18 – M12 x 1.75 nuts	1 – ECB Fog light kit
3 – M10 x 1.5 x 35 bolts and washers on 300mm wire	4 – ECB fog light surrounds
3 – M10 flat washers	1 – Pack load resistors
3 – M10 spring washers	8 – Cable locks
3 – M10 nuts	2 – 120mm lengths 3mm clip lock trim
1 – M8 x 30 bolts	1 – 2400mm length 6mm clip lock trim
1 – M8 flat washers	1 – 790mm length 6mm clip lock trim
1 – M8 spring washers	1 – Loctite Control Gel 3g
1 – M8 nut and washer on 300mm wire	10 – 150mm zip ties

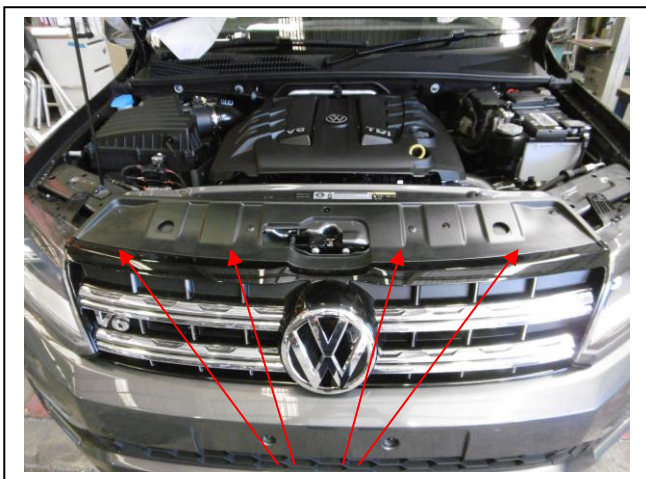


Figure 1

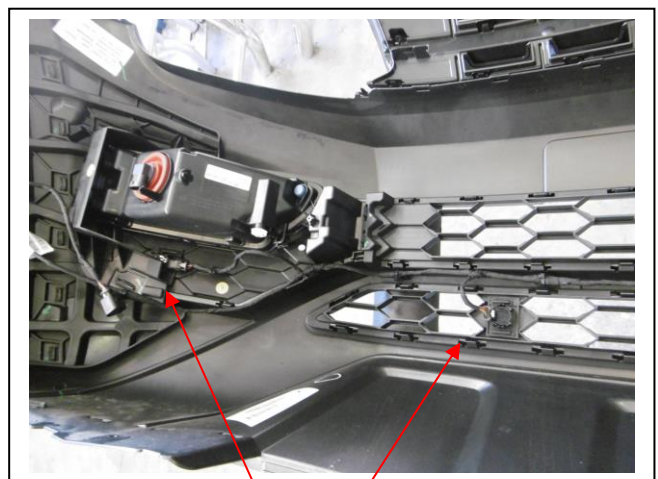


Figure 2



East Coast Bullbars (ECB Pty Ltd)

Tel: 07 3897 5700

Fax: 07 3283 1168

ecb@ecb.com.au www.ecb.com.au

WORLD'S BEST  
ALLOY BULLBARS

29 Snook St  
Clontarf QLD 4019  
Australia

Po Box 122  
Margate QLD 4019  
Australia

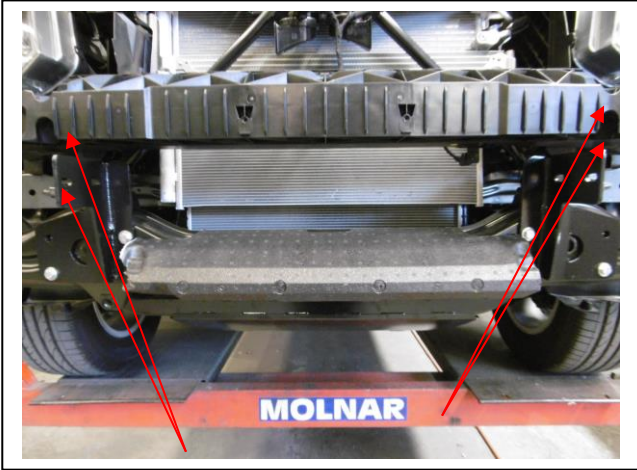


Figure 3



Figure 4

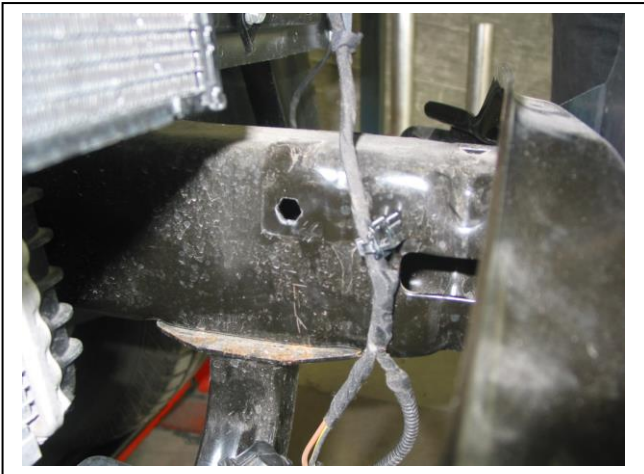


Figure 5

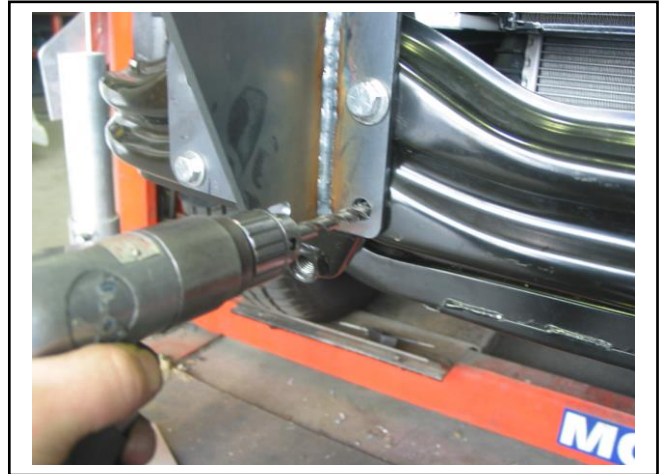


Figure 6

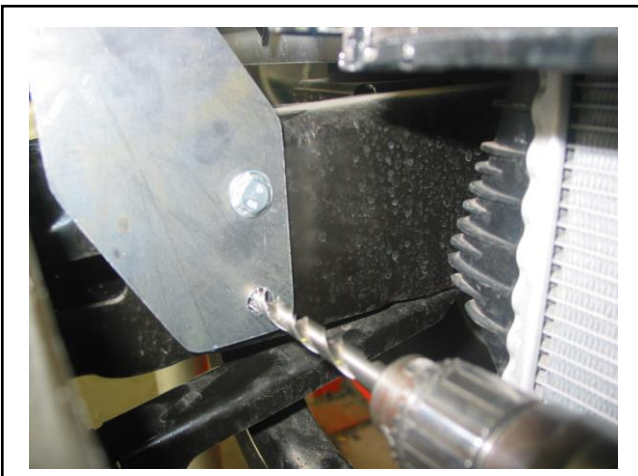


Figure 7



Figure 8



**WORLD'S BEST  
ALLOY BULLBARS**

**East Coast Bullbars (ECB Pty Ltd)**

Tel: 07 3897 5700

Fax: 07 3283 1168

ecb@ecb.com.au www.ecb.com.au

29 Snook St  
Clontarf QLD 4019  
Australia

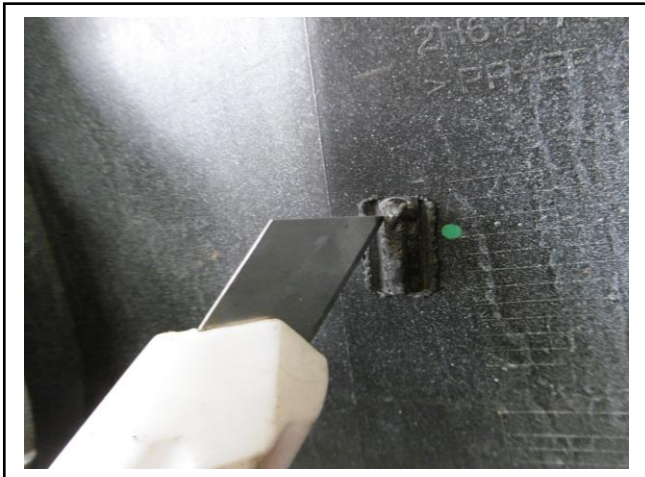
Po Box 122  
Margate QLD 4019  
Australia



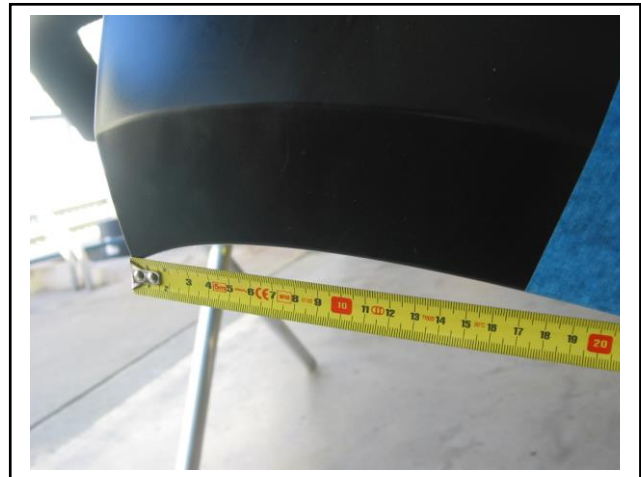
**Figure 9**



**Figure 10**



**Figure 11**



**Figure 12**



**Figure 13**



**Figure 14**



East Coast Bullbars (ECB Pty Ltd)

Tel: 07 3897 5700

Fax: 07 3283 1168

ecb@ecb.com.au www.ecb.com.au

29 Snook St  
Clontarf QLD 4019  
Australia

Po Box 122  
Margate QLD 4019  
Australia

WORLD'S BEST  
ALLOY BULLBARS



Figure 15

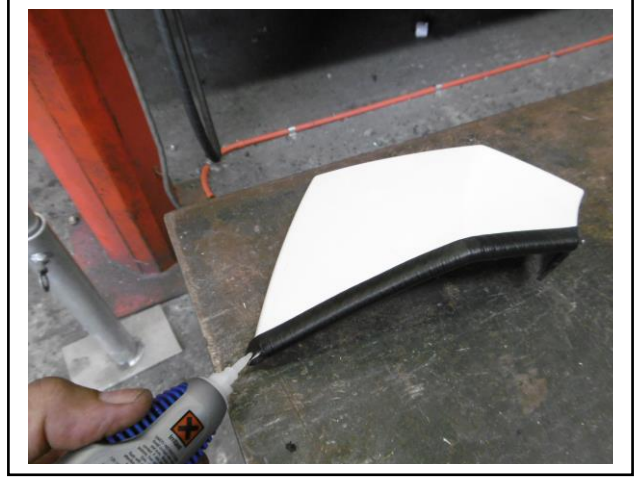


Figure 16

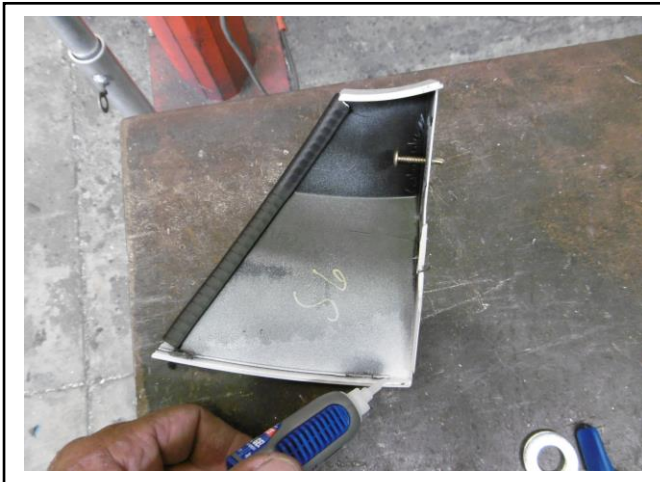


Figure 17

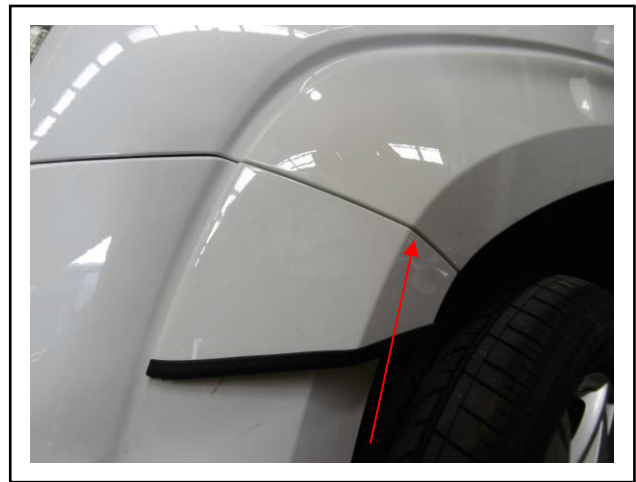
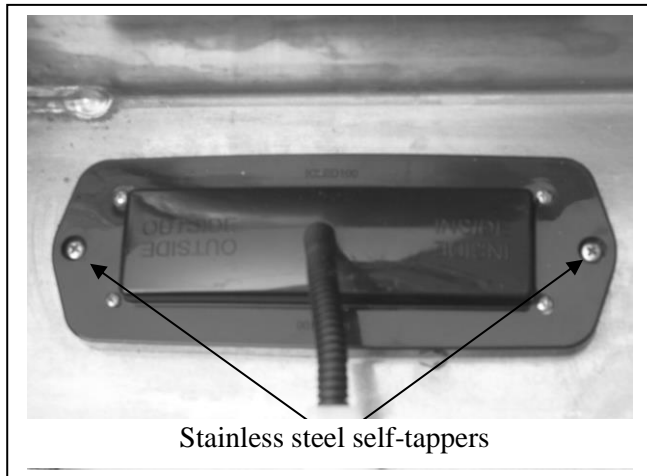


Figure 18



Stainless steel self-tappers

Figure 19



Figure 20.



East Coast Bullbars (ECB Pty Ltd)

Tel: 07 3897 5700

Fax: 07 3283 1168

ecb@ecb.com.au www.ecb.com.au

WORLD'S BEST  
ALLOY BULLBARS

29 Snook St  
Clontarf QLD 4019  
Australia

Po Box 122  
Margate QLD 4019  
Australia

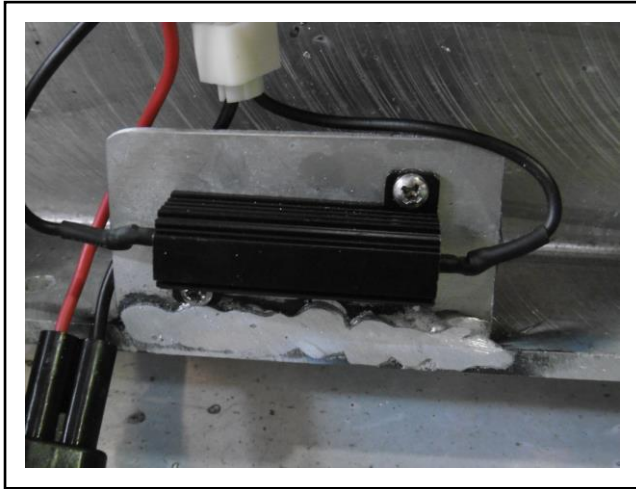


Figure 21.

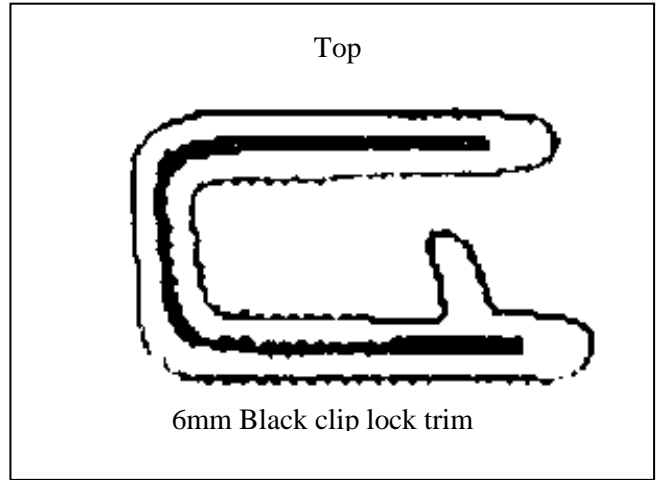


Figure 22.

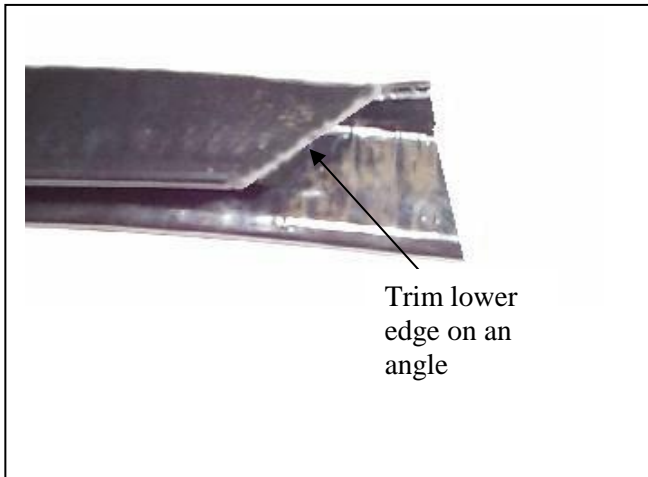


Figure 23

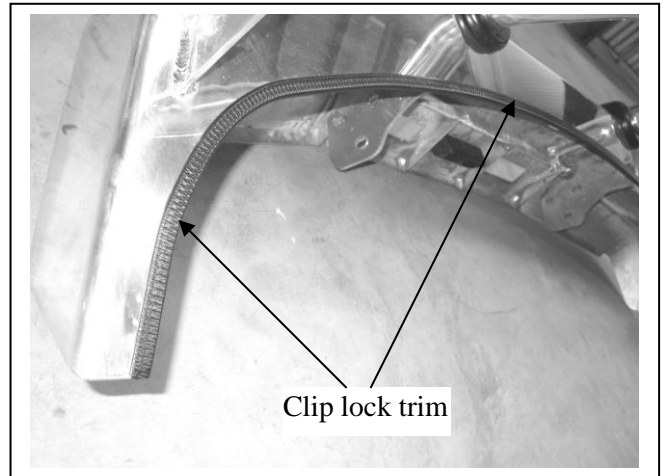


Figure 24



Figure 25



Figure 26





East Coast Bullbars (ECB Pty Ltd)

Tel: 07 3897 5700

Fax: 07 3283 1168

ecb@ecb.com.au www.ecb.com.au

29 Snook St  
Clontarf QLD 4019  
Australia

Po Box 122  
Margate QLD 4019  
Australia

WORLD'S BEST  
ALLOY BULLBARS



Figure 27



Figure 28



Figure 29

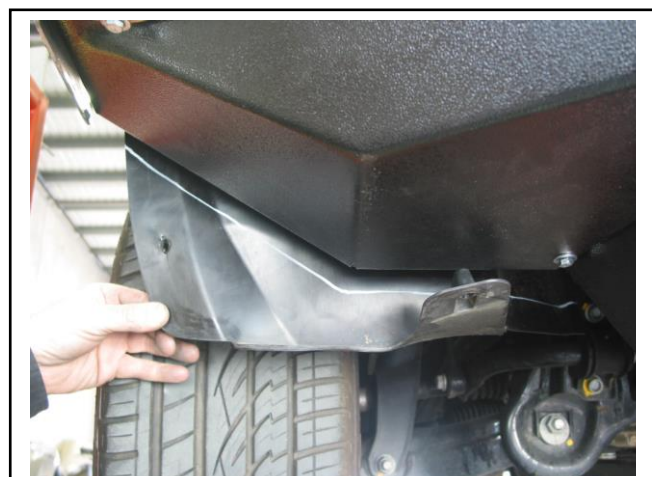


Figure 30

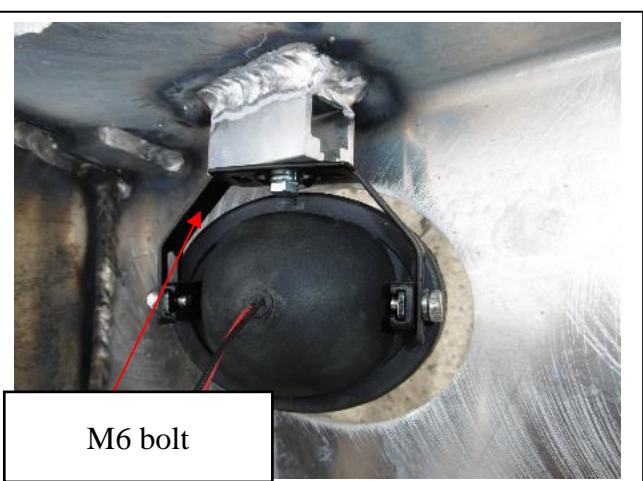


Figure 31



Figure 32



**WORLD'S BEST  
ALLOY BULLBARS**

**East Coast Bullbars (ECB Pty Ltd)**

Tel: 07 3897 5700

Fax: 07 3283 1168

ecb@ecb.com.au www.ecb.com.au

29 Snook St  
Clontarf QLD 4019  
Australia

Po Box 122  
Margate QLD 4019  
Australia

## *We value your comments*

Dear Fitter,

ECB would like to know how you went with the installation of this product. We value your comment and may need to contact you to clarify some details so please complete your contact details clearly.

We would appreciate if you could complete as many of the following details as possible.

<b>Your Name:</b>	<b>Your contact No.</b>
<b>Product Part No.</b>	<b>Product Invoice No.</b>
<b>Product Description:</b>	<b>Make, model, and year of vehicle:</b>
<b>Product Work Order No.</b>	<b>Company your from/Company product purchased from:</b>

**Date of Fitment:** \_\_\_\_/\_\_\_\_/\_\_\_\_

Was the fitting hardware supplied complete?

Yes

No

If no what was not supplied

---

---

Did the installation go well?

Yes

No

Please provide comments

---

---

---

Please draw diagrams if you need to.

**Post to**

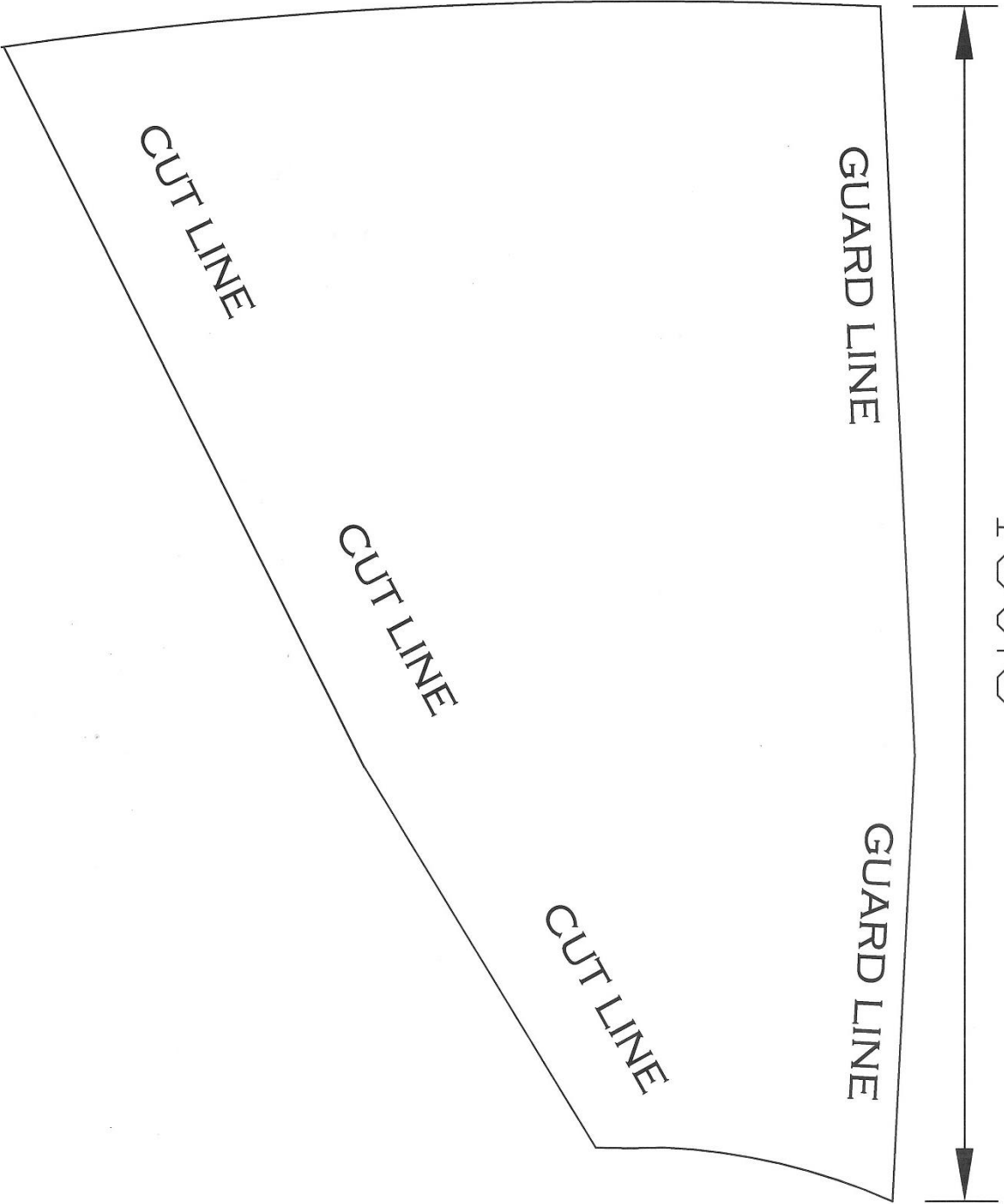
Reply Paid 122

PO Box 122

Margate QLD 4019

**Fax to**

(07) 3283 1168







WORLD'S BEST  
ALLOY BULLBARS

East Coast Bullbars (ECB Pty Ltd)

Tel: 07 3897 5700

Fax: 07 3283 1168

ecb@ecb.com.au www.ecb.com.au

29 Snook St  
Clontarf QLD 4019  
Australia

Po Box 122  
Margate QLD 4019  
Australia

## DESPATCH CHECKLIST EAV48SY

Work Order #		<b>See other side of this page for photos of all mounts</b>
Finish:		
Transport:		
Due Date:		

- OC..... 1 – Steel Winch cradle.
- OC..... 1 – Centre under body guard (black P/C)
- OC..... 1 – Pair side under body guards (black P/C)
- OC.....1 – Underbelly adaptor
- OC.....4 – Parking sensor mounts – **Fitted to bar**
- BK..... 1 – Bolt Kit.
- BK..... 1 – LED ECB indicator / park light kit. (ICLED105ECB)
- BK..... 1 – Quick Click Indi / park light kit (IC17VWAMIPDH)
- BK..... 1 – Fog light kit
- BK..... 1 – Pack load resistors
- BK..... 4 – Fog light surrounds
- BK..... 2 – 120mm length 3mm clip lock
- BK..... 1 – 2400mm length 6mm clip lock
- BK..... 1 – 790mm length 6mm clip lock
- OC..... 2 – ECB Overrides – **Fitted to Bar**
- OC..... 5 – 6mm Air Vents – **Fitted to Bar**

\_\_\_\_\_/\_\_\_\_\_  
Wrapper's initials / Checker initials



**Is this product “the best it can be”**  
If **NO** fix before continuing

All parts checked and completed by:

Nut and bolts: \_\_\_\_\_ Date \_\_/\_\_/\_\_

Order control: \_\_\_\_\_ Date \_\_/\_\_/\_\_

Final wrap check: \_\_\_\_\_ Date \_\_/\_\_/\_\_



**WORLD'S BEST  
ALLOY BULLBARS**

**East Coast Bullbars (ECB Pty Ltd)**

Tel: 07 3897 5700

Fax: 07 3283 1168

ecb@ecb.com.au www.ecb.com.au

29 Snook St  
Clontarf QLD 4019  
Australia

Po Box 122  
Margate QLD 4019  
Australia

