



INSTALLATION GUIDE

TOYOTA LANDCRUISER 300 SERIES 7-2021 ON

PN: EAT300SY, P2T300SY



THREE HOOP BAR
VEHICLE FRONTAL PROTECTION SYSTEM (VFPS)
FOR AIR BAG & ADR COMPLIANT VEHICLES

INDEX

PAGES 3-5

Installation Kit

PAGE 6

Stage 1 - Vehicle Testing and Preparation

Stage 2 - Lower bumper plastics

Stage 3 - Lower bumper clips

PAGE 7

Stage 4 - Inner guards

Stage 5 - Radiator cover

Stage 6 - Disconnect electrics

PAGE 8

Stage 7 - Grille

Stage 8 - Disconnect flare fronts

Stage 9 - Bumper removal

PAGE 9

Stage 10 - Bumper support

Stage 11 - Tie Down removal

Stage 12 - Grille support

PAGE 10

Stage 13 - Camera removal

Stage 14 - 15 - Camera wiring

PAGE 11

Stage 16 - Camera refitment

Stage 17 - Parking sensor relocation

Stage 18 - Parking sensor extensions

PAGE 12

Stage 19 - Fog light relocation

Stage 20 - Indicator/Parking light fitment

Stage 21 - Clip lock trim

PAGE 13

Stage 22 - Bumper Trim

Stage 23 - Grille Trim

PAGE 14

Stage 24 - Chassis mounts

Stage 25 - Chassis supports

Stage 26 - Recovery hook

PAGE 15

Stage 27 - Winch Cradle

Stage 28 - Battery removal

Stage 29 - Battery tray

PAGE 16

Stage 30 - Engine bay wiring

Stage 31 - Secure wiring

PAGE 17

Stage 33 - Light Connections

Stage 34 - Earth Connection

Stage 35 - P/S Foot well trim

PAGE 18

Stage 36 - P/S Door Scuff Plate

Stage 37 - P/S Kick Panel

Stage 38 - P/S Door pillar trim

PAGE 19

Stage 39 - P/S Lower console trim

Stage 40 - P/S Console trim

Stage 41 - Knee airbag

PAGE 20

Stage 42 - Glove compartment

Stage 43 - D/S Foot well trim

Stage 44 - D/S Door scuff plate

PAGE 21

Stage 45 - D/S Kick panel

Stage 46 - D/S Console trim

Stage 47 - D/S Door pillar trim

STAGE 22

Stage 48 - Switch panel trims

Stage 49 - Instrument cluster trims

Stage 50 - Instrument cluster

STAGE 23

Stage 51 - Center top dash trim

Stage 52 - Dash wiring

Stage 53 - Light Switch (if fitting)

STAGE 24

Stage 54 - Reassemble D/S and Center dash

Stage 55 - Cabin connection and mounting

Stage 56 - P/S Dash reassembly

STAGE 25

Stage 57 - Apply vinyl wrapping

Stage 58 - Install and align Protection Bar

Stage 59 - Connect electrics

Stage 60 - Side underbelly guards

STAGE 26

Stage 69 - Center underbelly guard

Stage 70 - Inner guard trim

Stage 71 - Connect, check and test

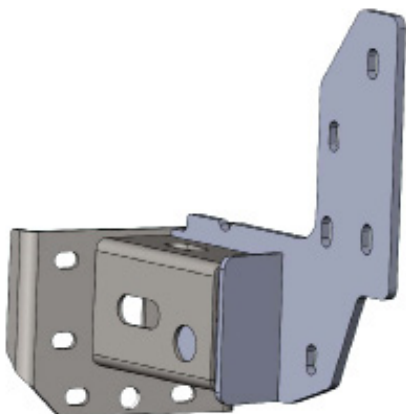
STAGE 27

Final Checks

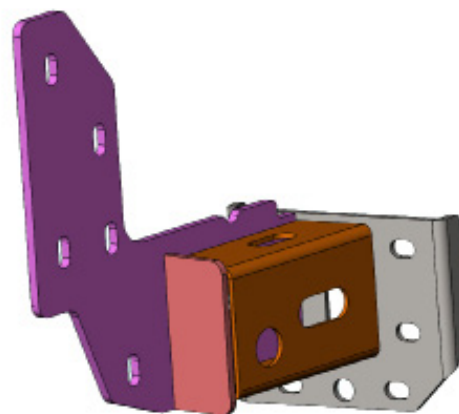
INSTALLATION KIT

1 - Pair steel mounting brackets	2 - M12 x 1.75 nuts
2 - Mounting bracket spacers	6 - M10 x 1.5 x 50mm bolt
1 - Winch cradle	12 - M10 Flat washers
1 - Control box mount	6 - M10 Spring washers
1 - Horn relay bracket	6 - M10 x 1.5 Nuts
1 - Center underbelly guard	21 - M6 x 25mm Bolts
1 - Pair side underbelly guards	42 - M6 Flat washers
1 - Pair outer support brackets	21 - M6 Nyloc nuts
1 - Pair inner support brackets	2 - 8-18 x 12mm self drilling screws
1 - Pair lower support brackets	2 - Parking Sensor extension harness (IC21TOLCSP1H)
1 - Recovery hooks left & right	1 - Indicator/park/DRL (ICLED105ECB)
2 - Suspension spacer plates	1 - 2800 mm length 6mm clip lock
2 - M12 x 1.75 x 120mm Bolts	2 - 550mm length 3mm clip lock
6 - M12 x1.25 x 50mm Bolts	4 - Parking Sensor housings (in Channel)
20 - M12 x1.25 x 40mm Bolts	1 - Wiring kit (IC21TOLCIPHDH)
46 - M12 x 29 x 2.5mm Flat washers	2 - Black vinyl wrapping stickers
28 - M12 spring washers	1 - Recovery hook Warning label
16 - M12 x 1.25 nuts	25 - 150mm Zip ties

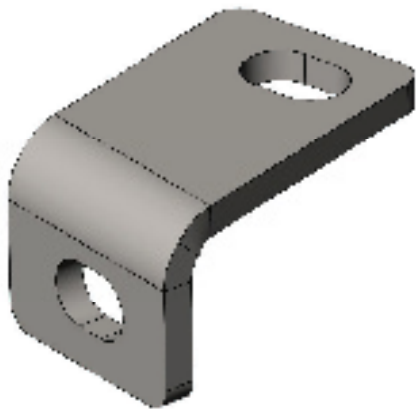
MOUNTS AND ANCILLERIES



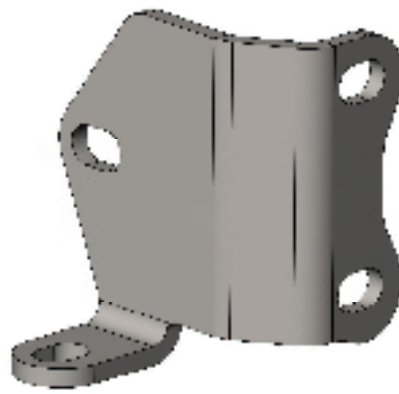
RH STEEL MOUNT



LH STEEL MOUNT



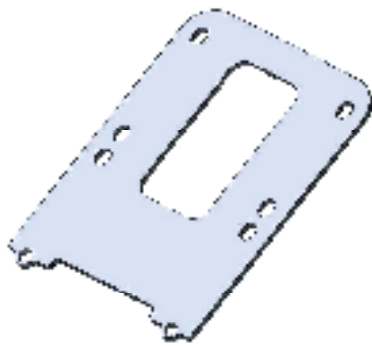
LOWER SUPPORT MOUNT
{EAT300_CGA6A}



INNER SUPPORT MOUNT
{EAT300_CHC6A}



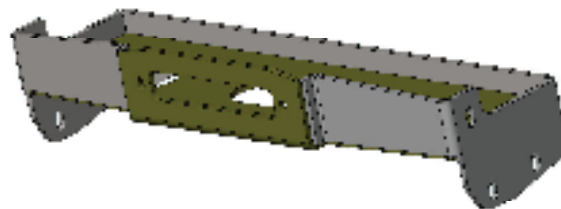
OUTER SUPPORT MOUNT
{EAT300_CHB6A}



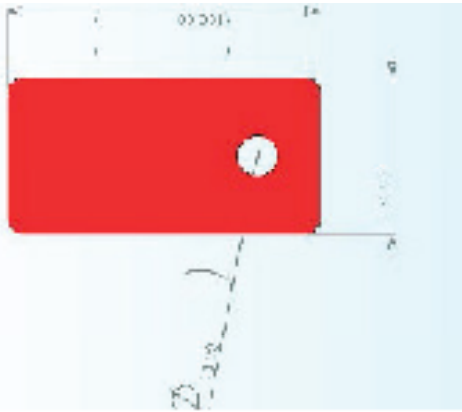
CONTROL BOX MOUNT
{EAT300_CBM5A}



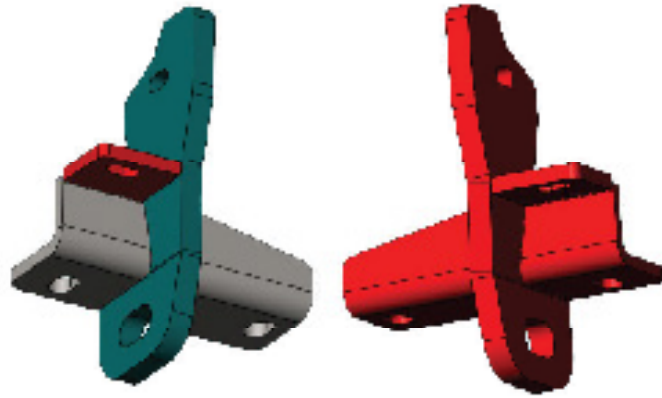
MOUNT SPACER PLATES
{EAT300_EP3M}



WINCH FRAME
{YEAT300 WINCH FRAME ASSEMBLY}



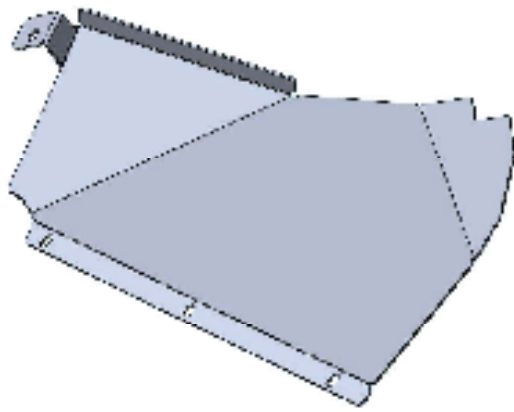
**SUSPENSION SPACER
(EAT300_TS8M)**



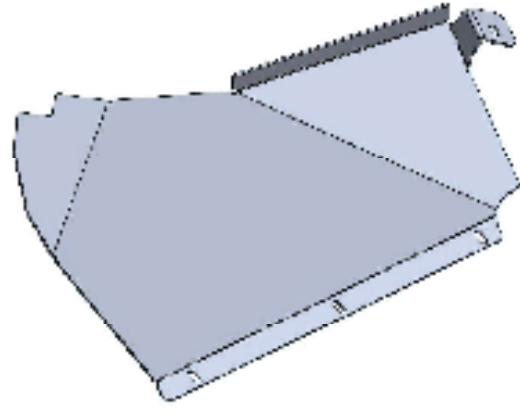
**RECOVERY HOOKS
LEFT & RIGHT**



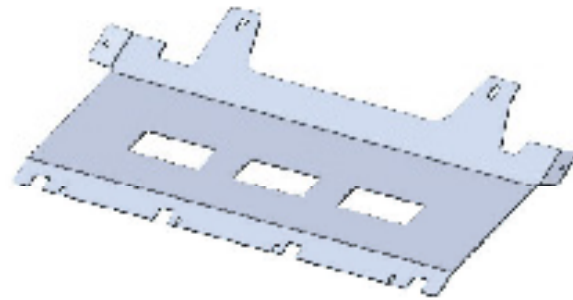
**WARNING STICKER
(CLAB-RRH ST-8T)**



**RH SIDE UNDERBELLY SKIRT
(EAT300_US3A)**



**LH SIDE UNDERBELLY SKIRT
(EAT300_US3A)**



**CENTER UNDERBELLY GUARD
(EAT300_GA3A)**

TOYOTA 300 SERIES LC 7-21_{ON}

STAGE 1

Test drive vehicle to ensure all driver assists are correctly working and to gauge effectiveness. Park on a flat level surface.

Apply parking brake and lift bonnet.

Unwrap ECB Protection bar and disconnect mounts. Discard bolts.



TURN VEHICLE IGNITION ON.

REMOVE BATTERY COVER AND DISCONNECT |

NOTE: Disconnection of electronic parts of this vehicle may disable all safety features, which will require a Toyota dealership to reset settings. As every vehicle is different, disconnection of the battery may not work for every vehicle.

STAGE 2

From under front of vehicle, remove outer plastic covers, five (5) x 10mm head bolts and one (1) x 12mm nylon nut.



STAGE 3

From lower edge of bumper, remove four (4) x 10mm head bolts.



EAT300SY, P2T300SY

STAGE 4

Under front wheel arch remove two (2) x push pull clips and one (1) x T25 Torx screw (per side) from inner guards.



STAGE 5

Remove seven (7) x push clips from top radiator cover plastic trim and remove.



STAGE 6

Disconnect parking sensors/sonar and camera if fitted. Harness on driver side between grille and headlight.



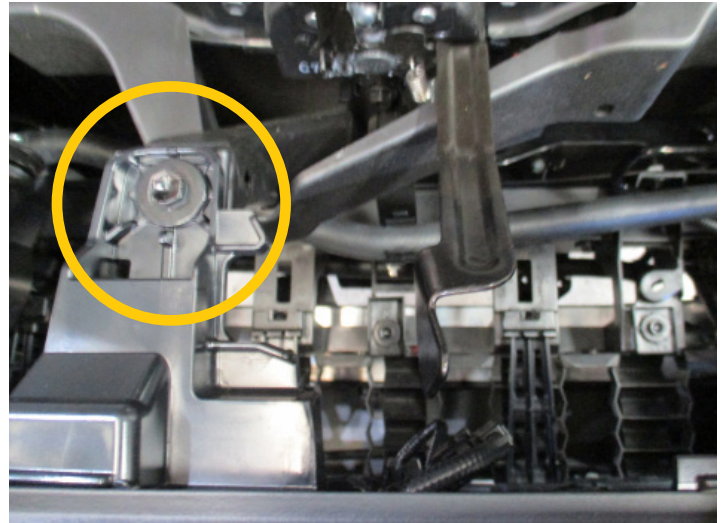
Disconnect headlight washer hose on passenger's side between grille and headlight.



TOYOTA 300 SERIES LC 7-21_{0N}

STAGE 7

Between headlights, remove three (3) x 10mm head bolts from rear of grille.

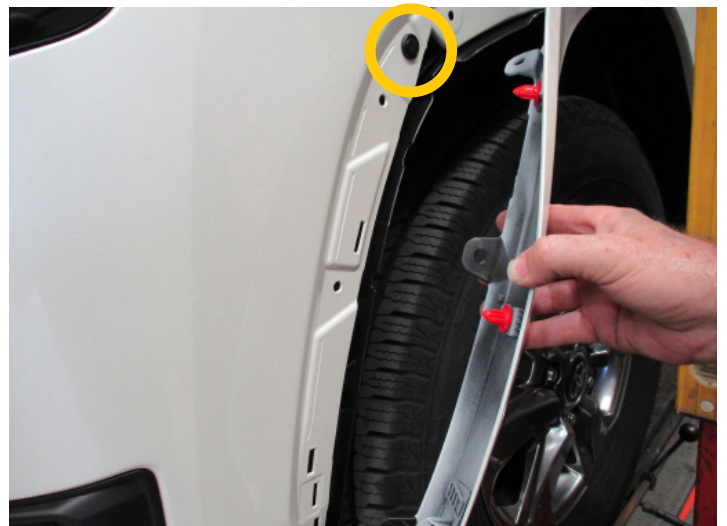


STAGE 8

Reach between inner guard and guard to release two (2) x lower clips on flares.

Gently pull flares away from outer guard.

Remove one (1) x push pull clip per side from guard/ bumper join.



STAGE 9

Gently pull outer wing away from guard and under headlights to release from attachment clips.

Pull centre of grille to release from attachment clips.

Remove bumper.

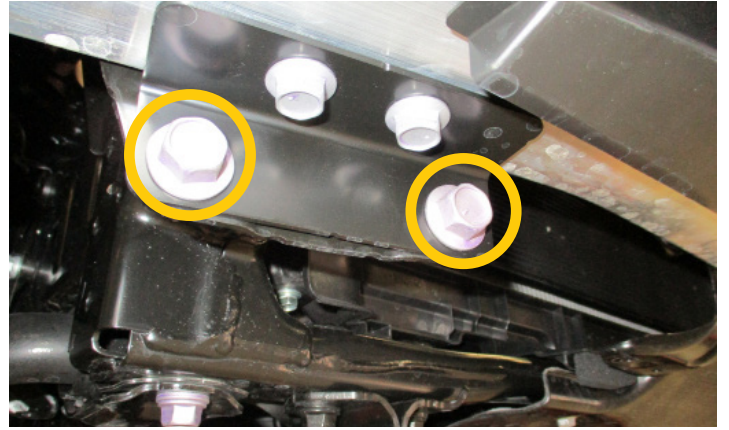
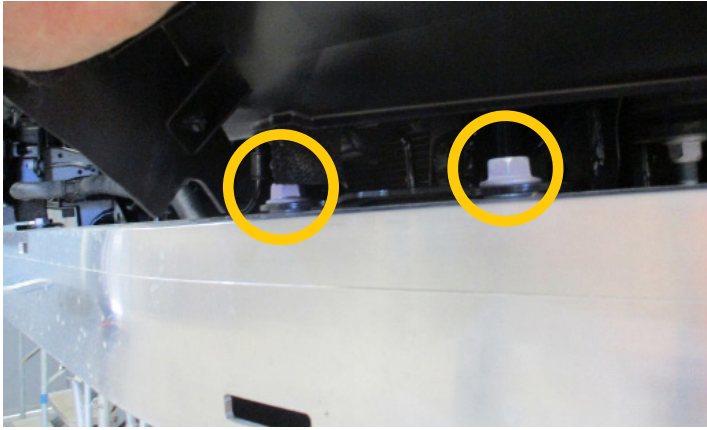


EAT300SY, P2T300SY

STAGE 10

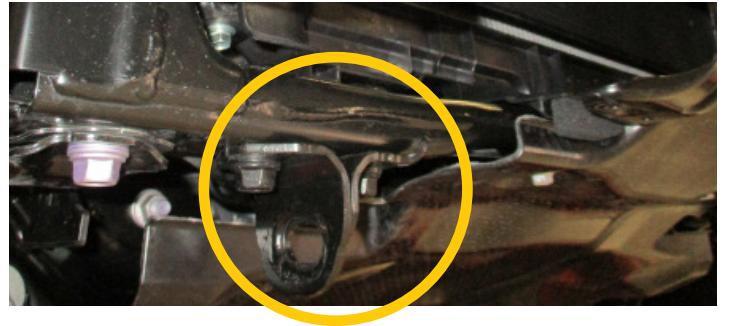
Bumper support remove four (4) x 17mm bolts top and bottom of alloy bumper support.

Remove alloy bumper support.



STAGE 11

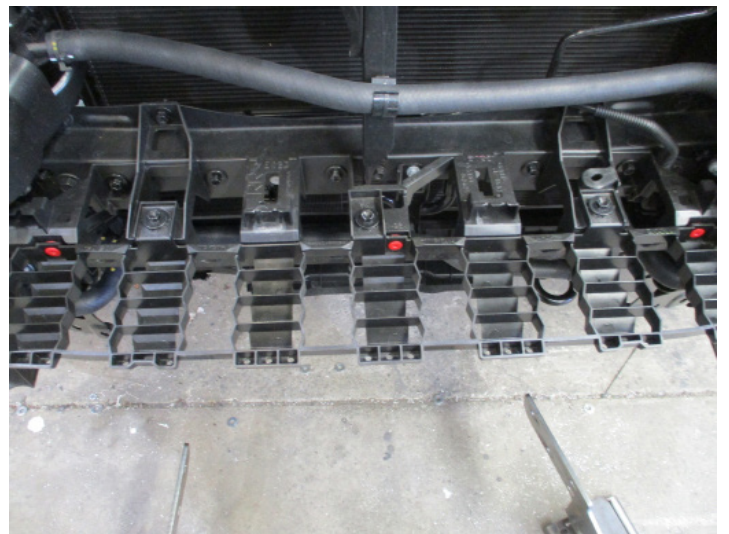
Remove original tie down hooks from underside of cross member, two (2) x 17mm head bolts.



STAGE 12

Remove grille support, six (6) x 10mm head bolts.

Pull up and forward to release.



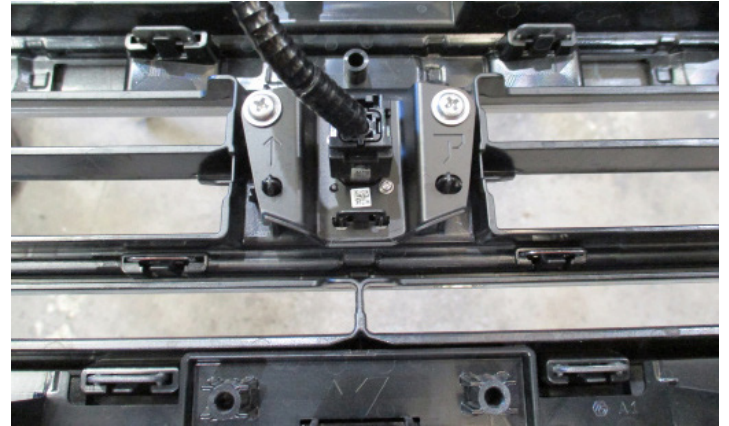
TOYOTA 300 SERIES LC 7-21_{ON}

STAGE 13

Disconnect camera and remove two (2) x phillips head screws.



Unclip outer plastic camera housing.



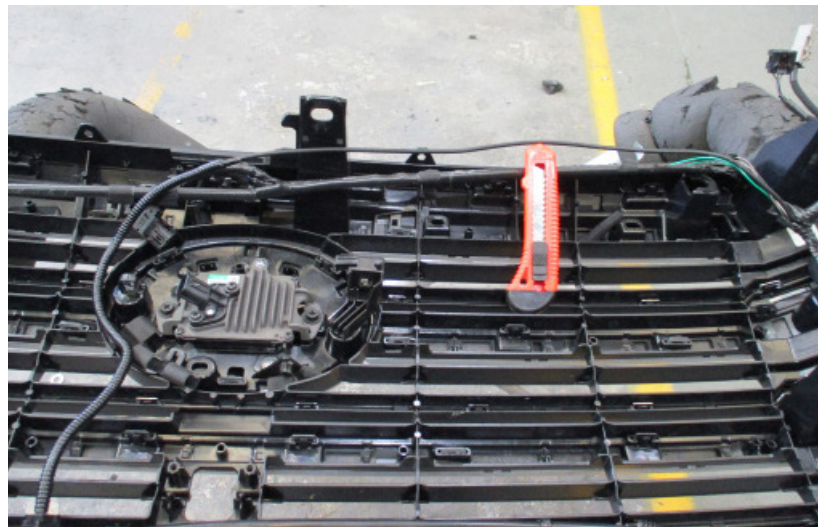
STAGE 14

Remove wiring from clips across top rear of grille.

Using a sharp knife or similar, carefully slit covering tape ensuring wiring inside is not damaged.

Remove camera wiring back to join where loom separates from top to bottom. Cover wiring with Convoluted tubing (supplied). Re tape top loom and run wiring down to bottom of grille with other loom.

Attach loom to lower section of grille



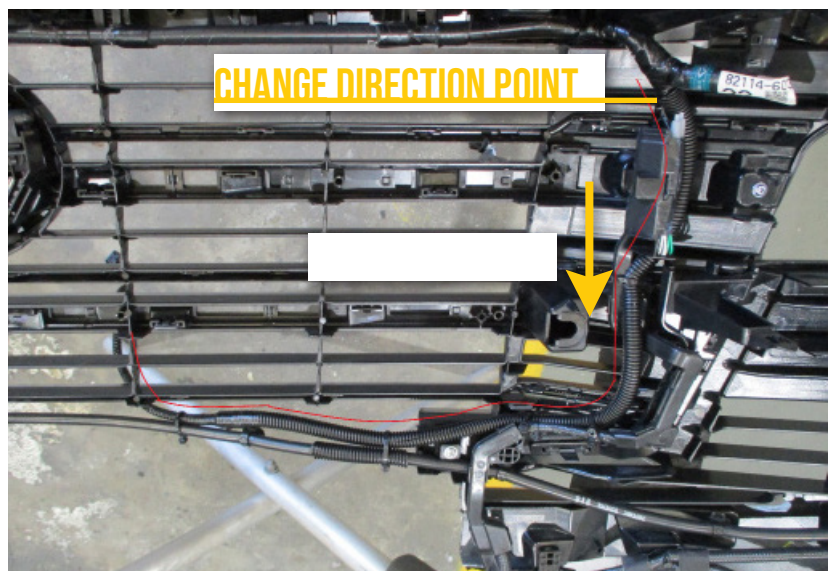
STAGE 15

Remove camera wiring back to join where loom separates from top to bottom.

Cover wiring with Convoluted tubing (supplied). Re tape top loom and run wiring down to bottom of grille with other loom.

Attach loom to lower section of grille using zip ties supplied.

Cut grille for 2 Post and Triple Tube Bar shown.



EAT300SY, P2T300SY

STAGE 16

Place camera into Protection Bar.

Align camera to hole in cross brace.
Secure camera to mount using two (2) x self drilling screws.

Ensure top of camera mount is parallel to cross brace.

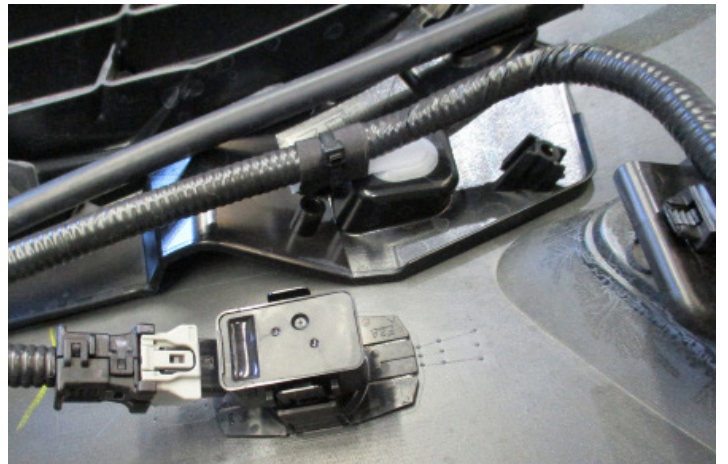


STAGE 17

Remove parking sensors from bumper.

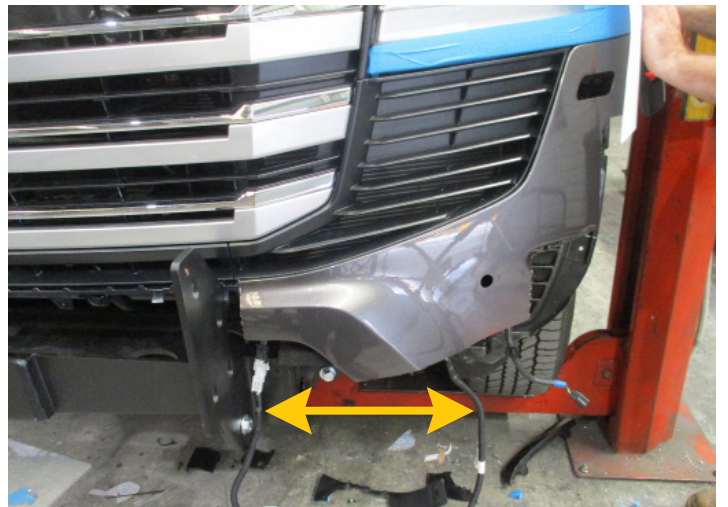
Place sensor housings into protection bar as they were removed from the bumper.

NOTE: Failure to place the sensors in the correct location as per the location in the original bumper, will cause the system to fail as the sensors are different from center to outer.



STAGE 18

Connect parking sensor extensions (supplied).



TOYOTA 300 SERIES LC 7-21_{ON}

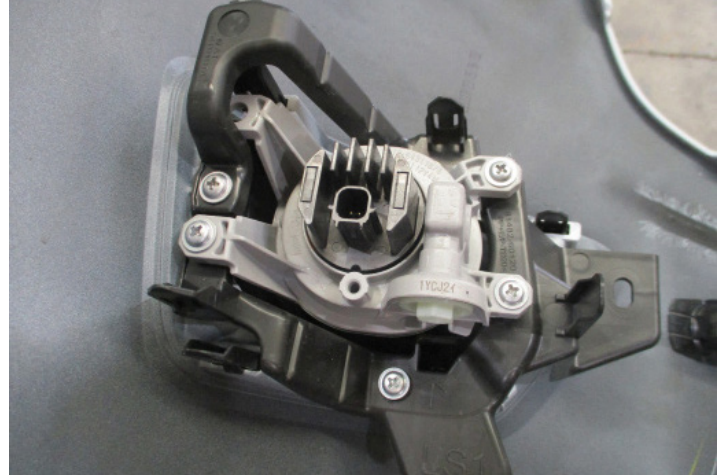
STAGE 19

Unclip outer housing from behind the fog lights.

Remove three (3) x phillips head screws per side.
Remove fog lights.

Secure into welded bracket in protection bar using
M6 x 25mm bolts, flat washers and Nyloc nuts. Nut
to rear of protection bar.

Align lights and tighten.



STAGE 20

Fit ECB LED indicator/park lights into protection
bar as per instructions supplied with the LED
indicator kit.

NOTE: Ensure park light is to top.



STAGE 21

Attach 6mm clip lock trim (supplied) to top of ECB
Protection Bar.

NOTE: Trim off lower edge on an angle so trim will sit
flush with end of Protection Bar.



EAT300SY, P2T300SY

STAGE 22

Using paper masking tape, mask area to be cut to avoid damage.

As printers vary, check measure template to ensure correct sizing.

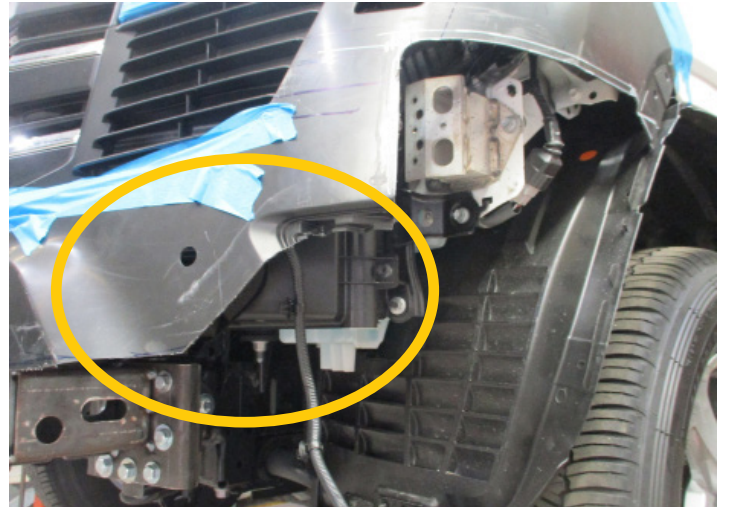
From this instruction, using sharp scissors, carefully cut out template.

Mark and cut bumper using jigsaw, hack saw or similar.

CAUTION: Double check all marked lines before trimming.

Trim bumper just below intercooler intake on bottom of intercooler.

Place 3mm clip lock on trimmed bumper along flare and side bumper. Trim rear from clip lock trim to cross between flare and bumper.



STAGE 23

Trim lower section from grille. At sides leave clips so grille is able to secure to outer bumper.

Refit bumper in reverse as per steps 4 to 8.



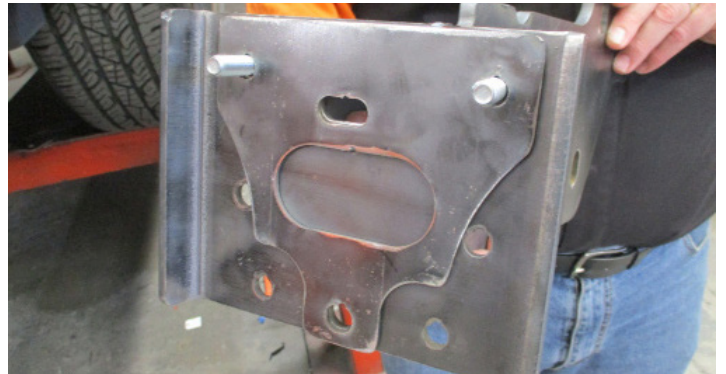
TOYOTA 300 SERIES LC 7-21_{0N}

STAGE 24

Install steel mounting brackets to end of chassis rail with steel spacer plate between mount and chassis rail. Install using M12 x 1.25 x 40mm bolts, flat washer and spring washer into bottom holes with captive nuts.

Place support bracket to inside of chassis rail. Secure to top hole using M12 x 1.25 x 50mm bolt, flat washer, spring washer and M12 x 1.25 nut. In bottom hole use M10 x 1.5 x 40mm bolt, flat washer, spring washer and M10 x 1.5 nut.

Finger tighten only.



STAGE 25

Place lower support into position using M10 x 1.5 x 50mm bolt and flat washer, spring washer and M10 x 1.5 nut through front of chassis rail. Finger tighten only.

Install outer support brackets as per inner bracket.

In top hole through rail and tow hook, use M12x 1.75 x 120mm bolt, flat washer, and M12 x 1.75 Nyloc nut. Finger tighten only.

In bottom hole under rail, secure with M12 x 1.25 x 50mm bolt, flat washer and spring washer. Finger tighten only.



STAGE 26

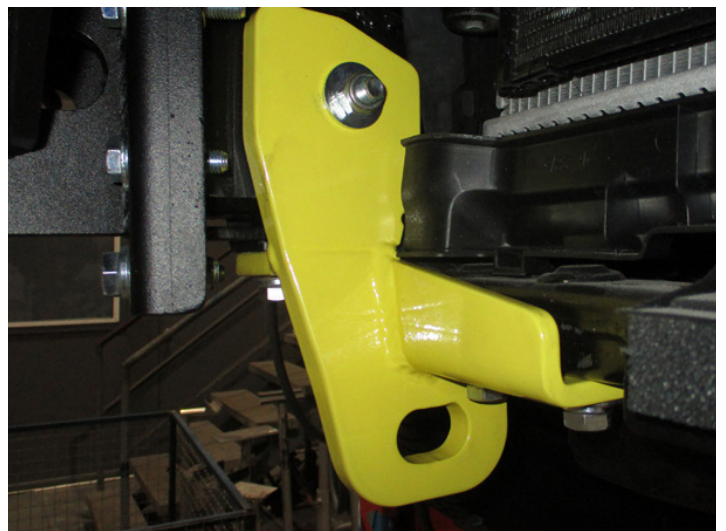
Remove M12 x 50mm bolt from under chassis rail.

Loosen only sway bar from vehicle to give 8 to 10mm gap, four (4) x 17mm head bolts. Remove bolts completely from, one side.

Place 8mm spacer under rear of sway bar mount and reinstall original equipment bolt.

Install Rated recovery hook to vehicle using original bolt for Sway bar, M12 x 1.25 x 40mm bolt, spring washer and flat washer in tow point holes in cross member. Check bolts in holes for fit. Do not fully install other bolts at this time.

Finger tighten only. Repeat for opposite side.



EAT300SY, P2T300SY

STAGE 27

Fit winch cradle between mounting brackets. Two bottom holes secure with M12 x 1.25 x 40mm bolts, flat washer, spring washer and M12 x 1.25 nut.

NOTE: Rear hole is through crash can. Finger tighten only.

Check inside measurement of mounts in protection bar and use measurement to the outside of steel mounting brackets.

Align cradle and mounts and tighten all bolts.

NOTE: Check upper holes in cradle to ensure alignment with mount.



STAGE 28

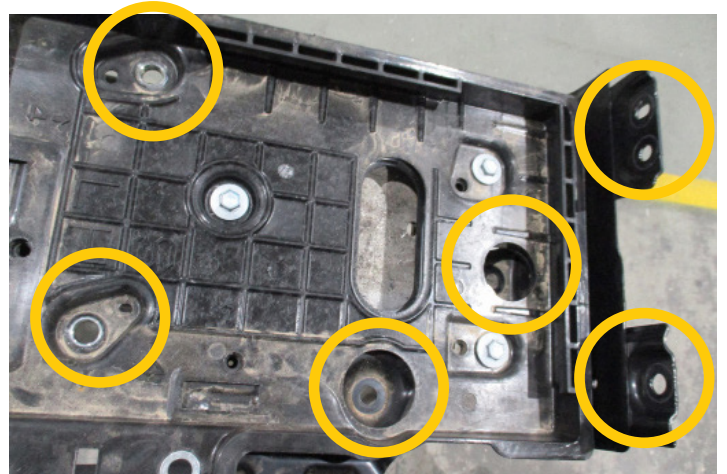
From inside front lower corner of battery, remove two (2) x 12mm head bolts from battery tie down.

Remove tie down and battery.



STAGE 29

Remove battery tray to give access to fire wall wiring entry. Seven (7) x 12mm head bolts.



TOYOTA 300 SERIES LC 7-21_{0N}

STAGE 30

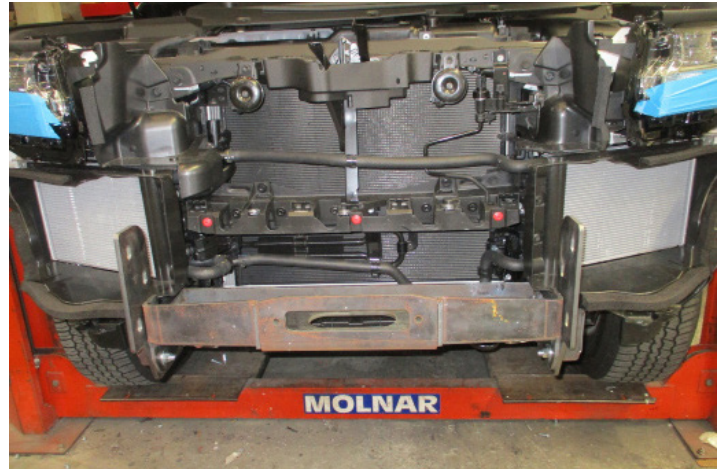
Feed wiring harness into area under locking mechanism at front of vehicle.

Attach to wiring harness under top of radiator support where possible using zip ties supplied.

Run dropper for lights behind headlight and attach to radiator support in required areas. Ensure dropper is clear of intercooler radiator.

Attach wiring harness to original equipment harness and fixtures in engine bay where possible.

Ensure harness is clear of sharp edges and possible rub points to avoid possible damage.



STAGE 31

Feed wiring harness through area behind headlight, following OEM wiring harness under air box intake, around to inside of fuse box following OEM wiring to the firewall entry.



STAGE 32

Cut end of nipple from firewall bung and feed wiring into vehicle.

From inside of vehicle, locate wiring and ensure it is not wound around OEM wiring or restricted by other wiring/parts.

This connects to inner (cabin) wiring harness.

Seal firewall bung into vehicle using silicon and a zip tie around the body of the bung.



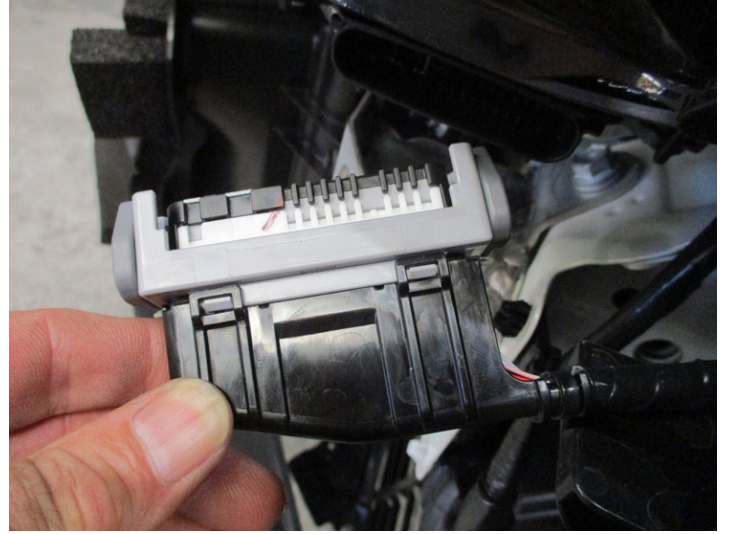
EAT300SY, P2T300SY

STAGE 33

Disconnect headlights and remove.

On headlight wiring, the remove convoluted tubing. Find specified wire as per the instructions supplied with the wiring harness and join into wiring harness.

Refit headlights to vehicle.



STAGE 34

Remove black cover from earth terminals under light.

Connect earth of harness to earth bolt. Refit black earth cover.



STAGE 35

From under glove compartment in passenger side footwell, remove lower cover, four (4) press clips.

NOTE: squeeze clip to front of vehicle to release.

Pull lower cover rearward when clips released to remove from vehicle.



TOYOTA 300 SERIES LC 7-21_{ON}

STAGE 36

Inside passenger side footwell, remove door scuff plate.



STAGE 37

From footwell, remove one plastic nut from kick panel. Pull trim to rear of vehicle to remove.



STAGE 38

Remove pillar trim between glove box and door under outer vent.

Gently pull trim directly outward toward door to release clips.

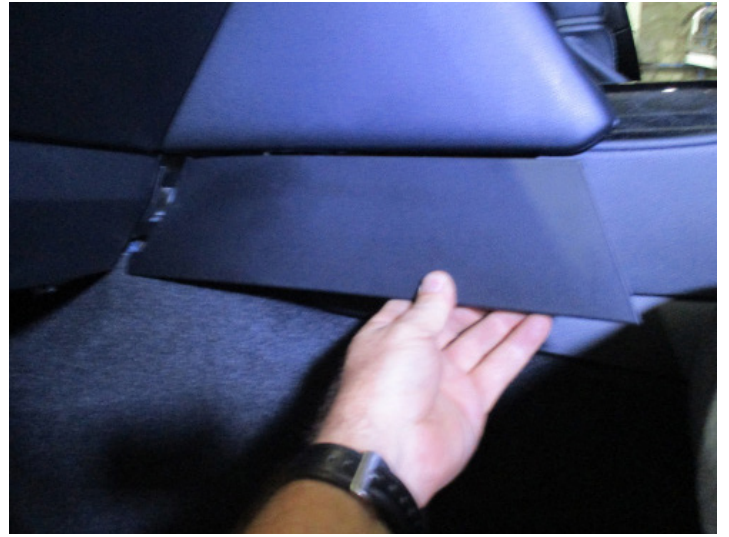


EAT300SY, P2T300SY

STAGE 39

On lower side of center console, remove fill trim. Slide fingers under trim at lower rear and gently lever out from console. There are four clips holding it to the console.

Slide trim to rear to remove front sliding clips.



STAGE 40

On center console, tape shown areas to avoid scratches.



Pull top side trim directly rearward to remove. Part has six (6) clips holding it to the console.



TIP: Take a 400mm piece of 50mm paper masking tape and fold 100mm at end back on itself. Stick the remainder to the trim.

This can then be used as a handle to allow better leverage to pull the trim backward.

STAGE 41

On knee airbag, remove three (3) x 10mm head bolts. Carefully remove airbag from glove box by pulling plastic trim rearward at join to bottom of glove box.

Remove black wiring clip on yellow wiring harness behind passenger knee airbag to air conditioning fan housing. **DO NOT DISCONNECT.** Place on floor to inside side of footwell.

CAUTION: Care needs to be taken not to drop, shock or damage this unit.

THIS IS A CRITICAL SAFETY ITEM.



TOYOTA 300 SERIES LC 7-21_{ON}

STAGE 42

Remove glove compartment, four (4) x 10mm head bolts. Top two (2) bolts are behind plastic covers inside top of glove box.



STAGE 43

On driver side of vehicle, remove lower dash cover from footwell, two (2) x 8mm screws and three (3) squeeze clips.



STAGE 44

Remove driver door scuff plate by pulling up to remove.



EAT300SY, P2T300SY

STAGE 45

On kick panel, remove one plastic nut and pull rearward to remove.



STAGE 46

On centre console, tape shown areas to avoid scratches.

Pull top side trim directly rearward to remove. Part has six (6) clips holding it to the console.

Disconnect wiring from rear of switch.



STAGE 47

Remove pillar trim between switch panel and door opening under outer vent (see photo). Gently pull trim directly outward toward door to release clips.



TOYOTA 300 SERIES LC 7-21_{0N}

STAGE 48

Remove switch panel trim from both sides of steering column. Carefully pull directly rearward on corners of trim. Some of the clips can be seen on the outside of the right hand side of the door's side trim.

A small flat blade screwdriver can be used to release these clips by gentle levering center attachment pin whilst pulling trim.



STAGE 49

Remove instrument cluster outer trim.

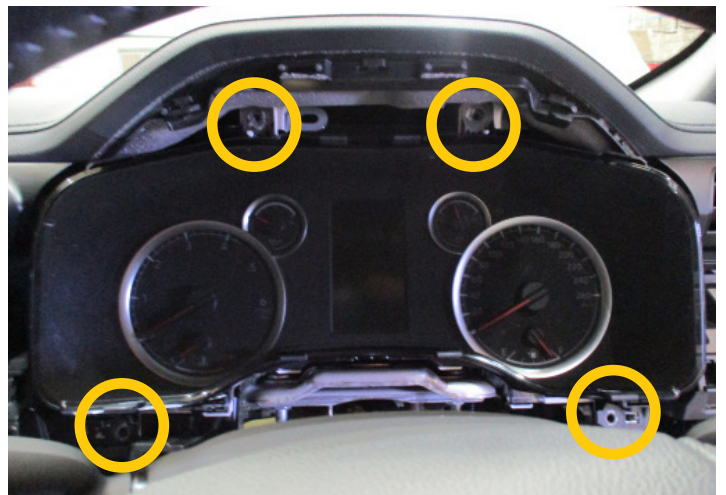


Caution: Soft joiner area between cluster and steering column is attached to the cluster trim. Carefully remove the soft trim from the top of the steering column.



STAGE 50

Remove instrument cluster, four (4) x 10mm head bolts. Carefully disconnect from wiring.



EAT300SY, P2T300SY

STAGE 51

From above centre display screen, remove venting style trim from top of dash. Lever small screwdriver under front outer edge and lever up. Clips are on outside edges of trim, 3 per side, two at front and rear.

Disconnect harness and remove.



STAGE 52

Run wiring harness across from passenger side to driver side, across dash support tube. In center, wiring needs to be fed under radio and above HVAC tubing on both sides.



STAGE 53

Zip tie harness into position on vehicle. Coil any extra wire and ensure it will not vibrate or rattle.

TOYOTA 300 SERIES LC 7-21_{ON}

STAGE 54

Reassemble dash on driver side of vehicle ensuring all electrical connections are refitted and dash is correctly assembled.



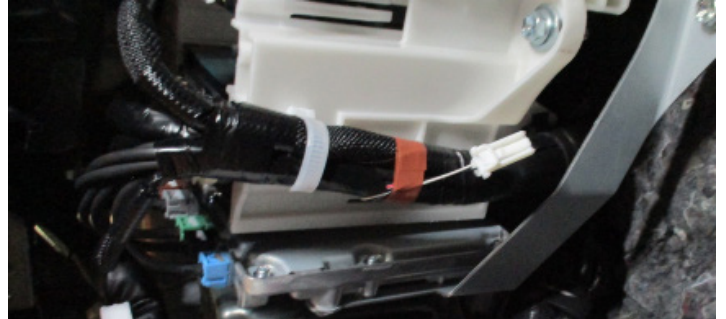
STAGE 55

Assemble computer to cabin wiring harness on matching connector.

Using alcohol swab (supplied), clean face of OEM ECU attached to lower pillar next to air conditioning unit.

Attach VHB tape to cabin computer and attach to side of OEM ECU.

Connect 2 pin plug on cabin wiring loom to matching plug on OEM loom in vehicle.



STAGE 56

Reassemble dash on passenger side of vehicle ensuring all electrical connections are refitted and dash is correctly assembled.

NOTE: Care needs to be taken when running the wiring behind the knee airbag ensuring that it does not affect it's positioning or stress the casing.

All wiring must be secured to ensure there are not future rattles.



EAT300SY, P2T300SY

STAGE 57

Clean remaining coloured sections of bumper with soap and water and follow after dry with isopropyl alcohol.

Peel rear from vinyl sheet and apply to area on lower section of bumper under grille using a credit card style applicator, sharp knife and heat gun.

Smooth area to be bubble free on completed item. Edges should be turned under and attached to rear where possible.



STAGE 58

Fit protection bar to mounting brackets. For the middle rear hole use M12 X 1.25 X 50mm bolt, flat washer, spring washer and M12 x 1.25 nut. In other holes use M12 x 1.25 x 40mm bolt, flat washer, spring washer and M12 X 1.25 nut.

Align protection bar with vehicle and tighten all bolts.



STAGE 59

Connect indicator/park/DRL, fog lights, all parking sensors and camera (if fitted).

STAGE 60

Attach side underbelly guards to top of end skirt and lower leg of channel using M6 x 25mm bolts, flat washers and Nyloc nuts.



TOYOTA 300 SERIES LC 7-21_{ON}

STAGE 61

Place centre underbelly guard to top of mid skirt and secure front holes using M6 x 25mm bolts, flat washers and Nyloc nuts.

In rear holes of centre underbelly use M12 x 1.25 x 40mm bolts, flat washers and spring washers securing underbelly guards and tow hooks together.

On wings of centre guard, drill a 6.5mm hole and secure with M6 x 25mm bolt, flat washers and Nyloc nut.



STAGE 62

Push inner guards up into wheel well. Mark and trim inner guards. Tuck inner guards behind the rear of the underbelly guard and behind side of Alloy Protection Bar.



STAGE 63

RECONNECT BATTERY

Test drive vehicle to ensure all safety features are working correctly.

Place warning sticker on inside rear of drivers door



FINAL CHECKS

ENSURE NUMBER PLATE IS CLEARLY VISIBLE

Note: When fitting/refitting the licence plate to the vehicle, ensure there is no obstruction to licence plate vision in accordance with local authorities. If required relocate licence plate to an alternate location.

FURTHER VFPS NOTES

1. Do not attach VFPS to the vehicle using anchorages not intended for this purpose (e.g. engine mounting bolts)
2. Do not use this product for any vehicle make or model, other than those specified by the VFPS manufacturer
3. Do not remove the plaque or label from the VFPS
4. Do not modify the structure of the VFPS in any way
5. No accessory or fitment should project forward of the VFPS forward profile

IMPORTANT INFORMATION

Periodically check bolts and nuts for correct tightness, especially if traveling on rough roads.

MAXIMUM LOAD 5000KG PER RECOVERY HOOK, 8000KG WITH BRIDLE STRAP CONNECTING BOTH POINTS

Incorrect use of recovery hooks may result in Vehicle Damage, Personal injury or Death

- Inspect and discard damaged or worn equipment before each use
- Use of a bridle strap is recommended
- Pull angle should not exceed the maximum turning angle of wheels, damage to vehicle may result
- Maximum shackle rating 4.75t complying with AS2741
- ECB recommends taking a 4WD safety course before use



1800 069 145
WWW.ECB.COM.AU
29 SNOOK ST CLONTARF, QLD 4019

REPLACES: 26.06.24
REVISED: 23.10.25