



INSTALLATION GUIDE

MITSUBISHI MV TRITON 2024 ON

PN: EAM166SY



BULLBAR

VEHICLE FRONTAL PROTECTION SYSTEM (VFPS)
FOR AIR BAG & ADR COMPLIANT VEHICLES

INDEX

PAGE 3 - 4

Installation Kit

PAGE 5

Stage 1 - Vehicle Testing And Preparation

Stage 2 - Radiator Cover

Stage 3 - Remove Grille

PAGE 6

Stage 4 - Inner Guard

Stage 5 - Underside

Stage 6 - Fog Light Cover

PAGE 7

Stage 7 - Wiring Harness

Stage 8 - Bumper Removal

Stage 9 - Foam Support

PAGE 8

Stage 10 - Underbelly Guard

Stage 11 - Front Impact Beam

Stage 12 - Bumper Support Brackets

PAGE 9

Stage 13 - Relocate Camera Harness

Stage 14 - Camera/ Sonar Removal

Stage 15 - Extend Sensor Harness

PAGE 10

Stage 16 - Trim Bumper

Stage 17 - Refit Bumper

Stage 18 - Fit Mount

PAGE 11

Stage 19 - Fit Sonar/ Camera

Stage 20 - Fog Lights

Stage 21 - Indicators/ Park/ DRL

PAGE 12

Stage 22 - Clip Lock

Stage 23 - Fit Protection Bar

Stage 24 - Connect Electrics

PAGE 13

Stage 25 - Underbelly Guards

Stage 26 - Trim Inner Guards

Stage 27 - Number Plate Bracket

PAGE 14

Stage 28 - Check All Safety Features

PAGE 15

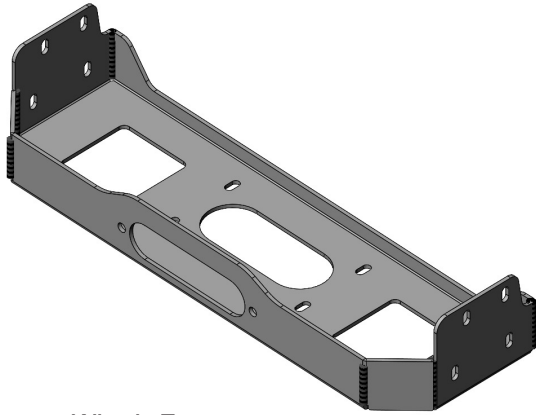
Final Checks

INSTALLATION KIT

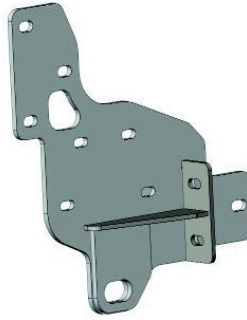
BULLBAR

1 - ECB Steel Mounting Bracket	2 - M8 x 40mm Bolts
1 - Winch Cradle	2 - M8 Spring Washers
1 - Rear Underbelly Guard (Steel)	2 - 5/16 x 11/4 Flat Washers
1 - Front Underbelly Guard (Alloy)	22 - M6 x 25mm Black Hex Head Cup Screws
1 - Pair Side Underbelly Guards Left & Right	3 - M6 x 25mm Bolts
2 - 40 x 40 x 4,12h Washer Plate	22 - Black Spring Washers
2 - 13Nb x 54mm Spacer Tube	2 - M6 x 16mm Bolts
2 - M12 x 100mm Bolts	6 - M6 Flat Washers
2 - M12 x 1.25 x 40mm Black Bolts	40 - M6 Black Flat Washers
14 - M12 x 1.75 x 40mm Bolts	3 - M6 Nyloc Nuts
30 - M12 Flat Washers	5 - 8g 18 x 12mm Self Drilling Screws
2 - M12 Black Flat Washers	1 - 2600mm Length 6mm Clip Lock
14 - M12 Spring Washers	4 - 300mm Lengths 3mm Clip Lock
2 - M12 Black Spring Washers	1 - Park Sensor Harness Kit
14 - M12 x 1.75 Nuts	1 - Fog Light Harness Kit
10 - M10 x 1.25 x 40mm Black Bolts	1 - Pair ECB Indi/ Park/ DRL
2 - M10 x 1.5 x 30mm Bolts	1 - Pair Bumper Lights (Carway)
8 - M10 Flat Washers	15 - 150mm Zip Ties
4 - M10 Black Flat Washers	1 - Number Plate Bracket
8 - M10 Spring Washers	1 - Park Sensor Harness Kit
2 - M10 Black Spring Washers	1 - Plastic Sonar Cover
2 - M10 x 1.5 Nyloc Nuts	

INSTALLATION KIT



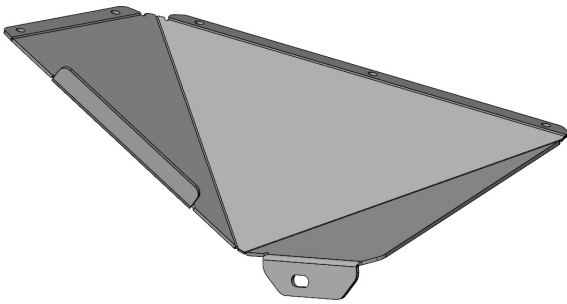
Winch Frame
EAM166_WAB6M



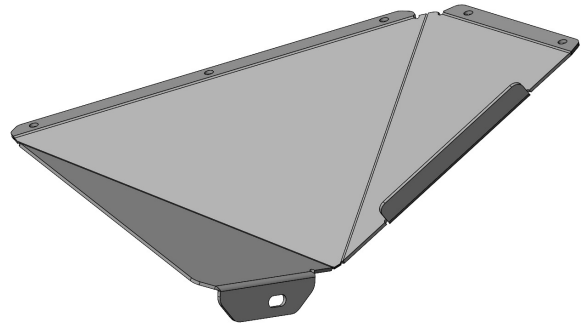
Mount Assembly
EAM166SY LHS



Mount Assembly
EAM166SY RHS



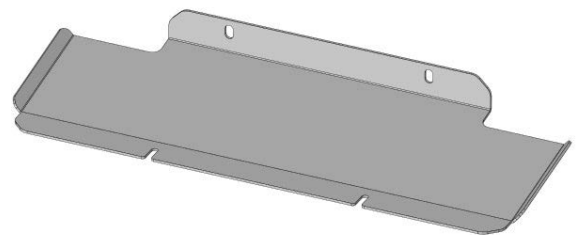
Side Underbelly Guard
EAM166_SUGL4A



Side Underbelly Guard
EAM166_SUGR4A



Front Underbelly Guard
EAM166SY_CUG4A



Rear Underbelly Guard
EAM166SY_LUG3M



21x17mm Steel Tube
54mm Long



Flat Steel Washer
40x40x4_12H

MITSUBISHI TRITON 24 ON

STAGE 1 - VEHICLE PREPARATION

Test drive vehicle to ensure all driver assists are correctly working and to gauge effectiveness.

Park on a flat level surface.

Apply parking brake and lift bonnet.

DISCONNECT BATTERY

Unwrap ECB Protection Bar and disconnect mounts.
Discard bolts.



STAGE 2 - RADIATOR COVER

Remove top radiator cover - eight (8) x push pull clips.



STAGE 3 - REMOVE GRILLE

Between headlights, remove two (2) x push pull clips.

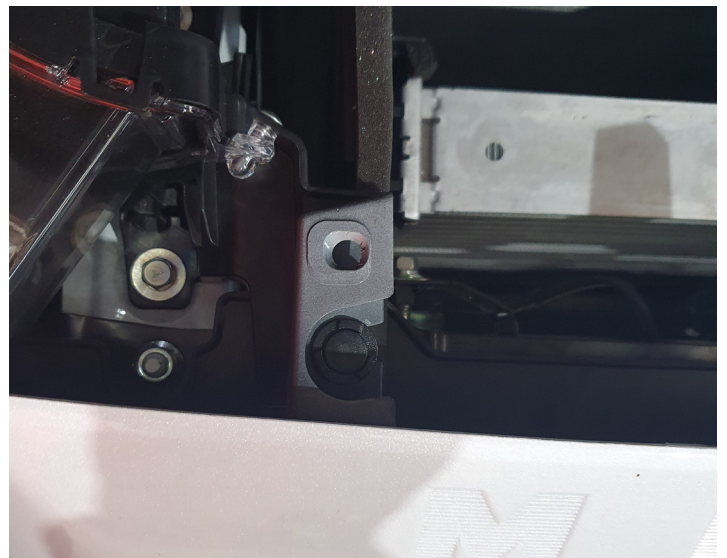
Gently pull centre away from car.

There are two (2) side clips (per side) retaining the grille to the headlights.

Six (6) plastic clips retain the grille to the bumper.

Disconnect camera.

Remove grille.



EAM166SY

STAGE 4 - INNER GUARD

Remove three (3) x 10mm head bolts and four (4) x push pull clips per side from inner guard.



STAGE 5 - UNDERSIDE

From underside, remove two (2) x push pull clips and two (2) x 10mm head bolts (per side).



STAGE 6 - FOG LIGHT COVER

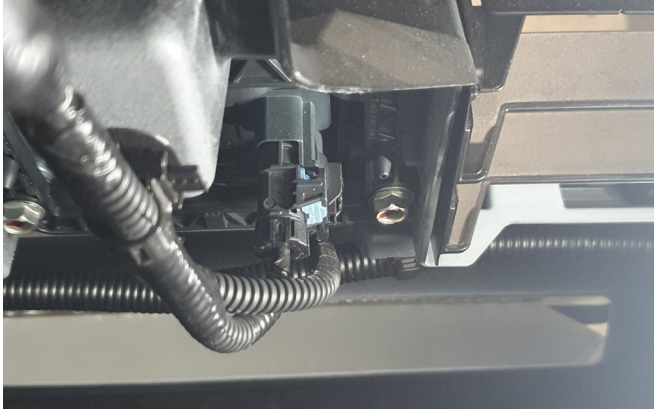
Gently unclip fog light surround to expose 10mm head bolt. Remove bolt.



MITSUBISHI TRITON 24 ON

STAGE 7 - WIRING HARNESS

Disconnect sonar and camera.

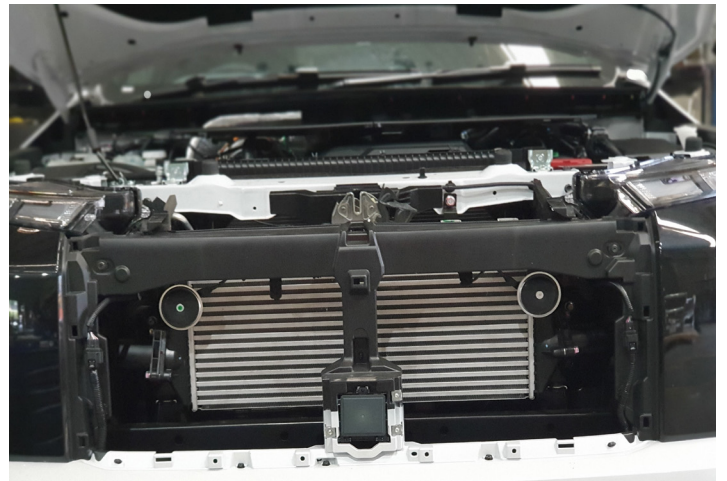


Disconnect harness on each side



STAGE 8 - BUMPER REMOVAL

On each side of headlight, remove (1) x 10mm head bolt per side and gently remove bumper from vehicle.



STAGE 9 - FOAM SUPPORT

Remove polystyrene infill, two (2) x plastic scrivenets from under side.



EAM166SY

STAGE 10 - UNDERBELLY GUARD

Remove underbelly guard - two (2) x 14mm head bolts at rear and two (2) at front.

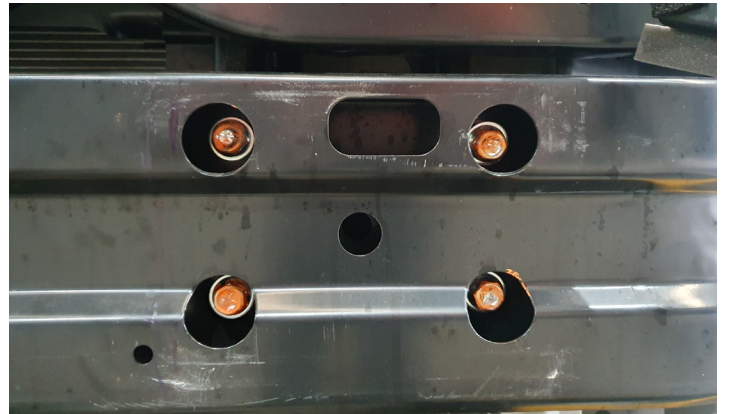


STAGE 11 - FRONT IMPACT BEAM

Remove impact beam - from rear remove one (1) x 14mm head bolt per side.



Front of rail remove four (4) x 14mm head bolts per side.



STAGE 12 - BUMPER SUPPORT BRACKETS

Remove lower bumper supports - two (2) x 10mm head bolt per side.

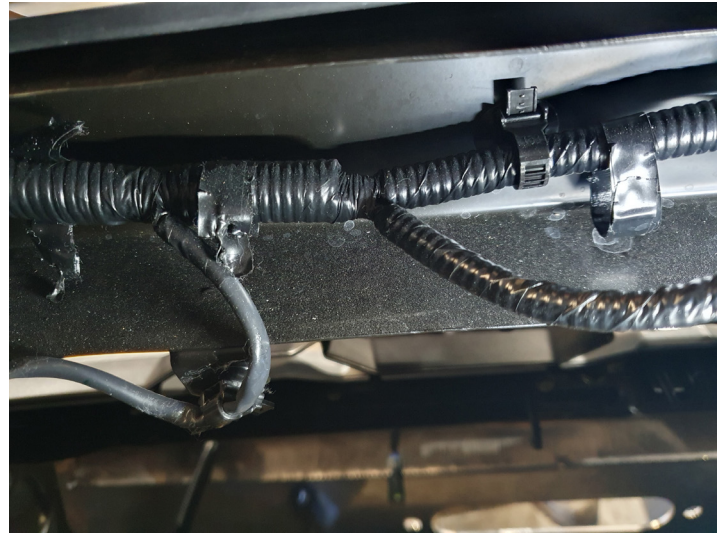


MITSUBISHI TRITON 24 ON

STAGE 13 - RELOCATE CAMERA HARNESS

At top of radiator support on rear, unclip harness from support rail.

Drop harness to allow connection to bottom of grille.



STAGE 14 - CAMERA/ SONAR REMOVAL

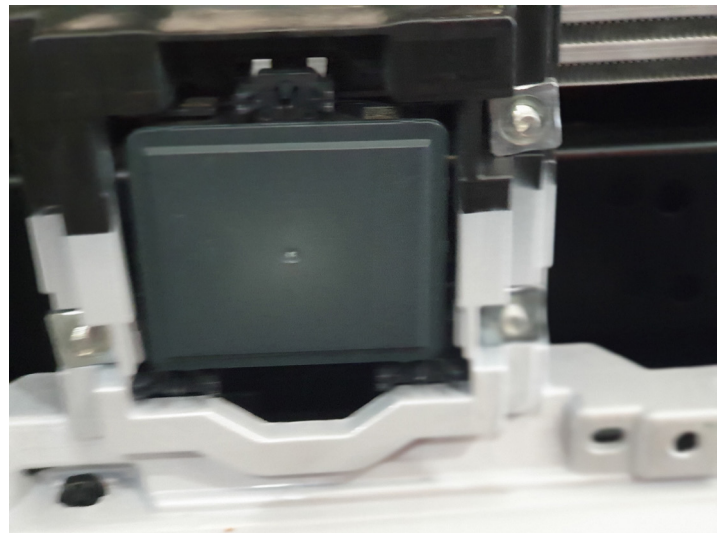
Remove camera from bumper - two (2) screws.

Remove sonar - three (3) x 10mm head bolts.

Unclip side blind spot sensors from bumper.

DO NOT DISCONNECT.

Remove harness from bumper, disconnect fog lights and remove parking sensors from housings.



STAGE 15 - EXTEND SENSOR HARNESS

Connect supplied parking sensor extension harness to the center parking sensor connectors only.



EAM166SY

STAGE 16 - TRIM BUMPER

Using template provided, cut bumper with jigsaw or similar. **Mask area to be trimmed to avoid excess damage.**

Once trimmed place 3mm clip lock on cut edge to suit. A small section may need to be cut from rear to allow move from bumper to flare (if fitted).

NOTE: Check scale as some copiers may vary.

If vehicle has flares, trim to suite bumper.



STAGE 17 - REFIT BUMPER

Refit bumper in reverse as per steps 2, 3 and 8.

Secure harness to underside of grille and reconnect.



STAGE 18 - FIT MOUNT

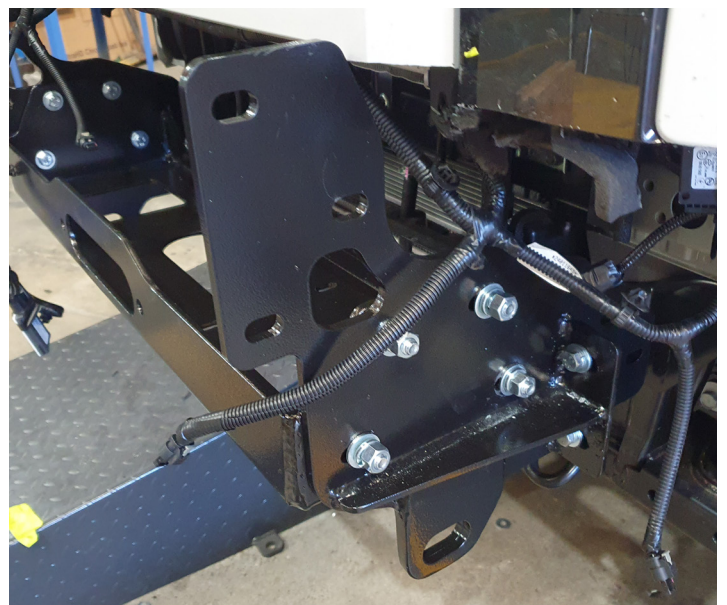
Fit steel mounting bracket to front of chassis rail using M10 x 1.25 x 40mm bolts, flat washers and spring washers. **Finger tighten all bolts.**

On side of chassis rail use M12 x 100mm bolt, flat washer and 54mm spacer tube inserted inside of rail, 40 x 40 washer plate, spring washer and M12 x 1.75 nuts.

Fit winch cradle in between mounting brackets using 1.75 x 40mm bolts, flat washers, M12 spring washers and M12 x 1.75 nuts.

Align mounts and **tighten all bolts.**

Do not tighten cradle at this stage.



MITSUBISHI TRITON 24 ON

STAGE 19 - FIT SONAR/ CAMERA

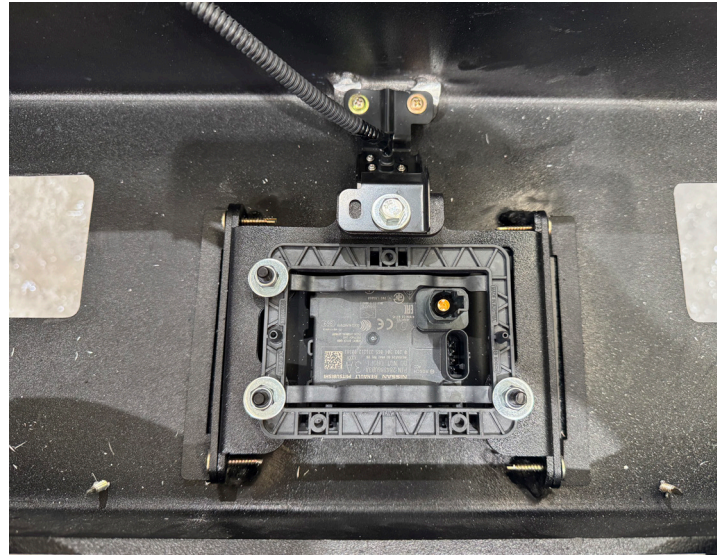
Fit sonar to sonar mount using M6 x 25mm black screws flat washers and Nyloc nuts.
Align and **tighten bolts**.

Place plastic sonar cover into mounting bracket in rear of Protection Bar, then mount in position. Lock into place with self drilling screws.

Install camera using one (1) x M6 x 25 bolt, flat washers and Nyloc nut.

In upper hole, use 8 gauge self-drilling screw to secure camera.

Install parking sensors into housings and place zip tie at rear to secure. **Do not over tighten.**

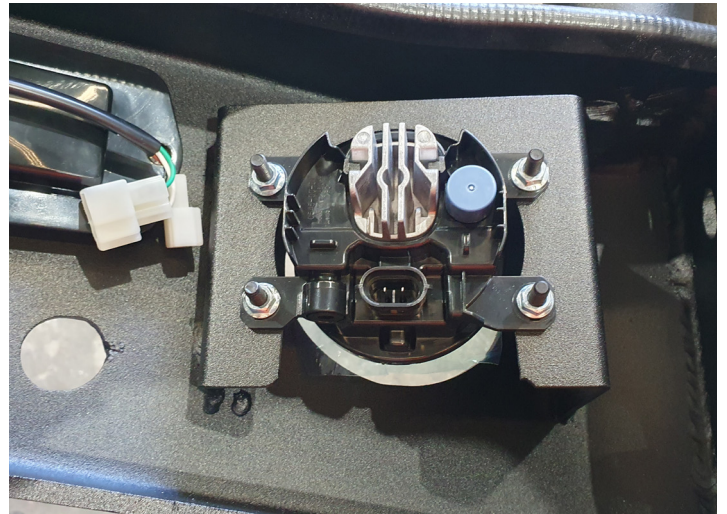


STAGE 20 - FOG LIGHTS

Fit fog lamps with M6 x 25mm black hex cup bolts, M6 flat washers and M6 Nyloc nuts.

Align and **tighten**.

Install extension harness to OEM harness.



STAGE 21 - INDICATORS/ PARK/ DRL

Fit ECB LED indicator/ park lights into Protection Bar as per instructions supplied with the LED indicator kit.

NOTE: Ensure park light is to top.

Wire Light module using Ind/ Park wiring harness included with this kit. **See separate instruction with harness for installation.**

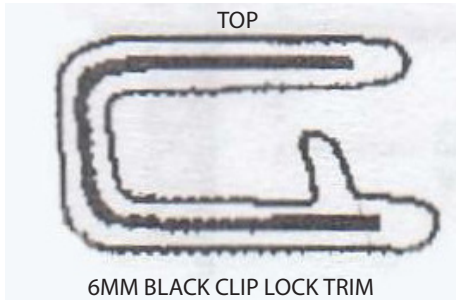


EAM166SY

STAGE 22 - CLIP LOCK

Attach 6mm clip lock trim (supplied) to top of ECB Protection Bar.

NOTE: Trim off lower edge on an angle so trim will sit flush with end of Protection Bar.



STAGE 23 - FIT PROTECTION BAR

Using M12 x 1.75 x 40mm bolts, fit Protection Bar to steel mounts. **Finger tighten only.**

Align Protection Bar and **tighten all bolts.**

Adjust winch cradle to align with winch opening in bumper, align and **tighten all bolts.**



STAGE 24 - CONNECT ELECTRICS

Connect all electrics and safety features.

Zip tie side blind spot sensors to body of car behind bumper avoiding sharp edges.

MITSUBISHI TRITON 24 ON

STAGE 25 - UNDERBELLY GUARDS

Fit centre under body guard to rear cross member using, M8 x 40mm bolts, spring washers and flat washers.

Fit alloy center guard to top of skirt. Where steel guard meets alloy guard, secure with M12 x 1.25 x 40 black bolts, spring washers and flat washers.

Secure guard to Protection Bar with M6 x 25mm black screws, spring washers and flat washers.

Fit side under belly guards with M6 x 25mm bolts, spring washers and M6 flat washers.

Bottom hole - secure to bottom support with M10 x 1.5 x 25mm black bolt, M10 flat washers and M10 x 1.5 Nyloc nut at rear.

Align and **tighten all bolts**.



STAGE 26 - TRIM INNER GUARDS

Trim inner guards to suit underbelly guards.



STAGE 27 - NUMBER PLATE BRACKET

Align bracket to Protection Bar. Drill 6mm holes and secure with M6 x 25mm bolts, flat washers and M6 Nyloc nuts.

Attach number plate.

EAM166SY

STAGE 28 - CHECK SAFETY FEATURES

Check all safety features working correctly.

Turn off blind spot sensors (refer to vehicle manual).



FINAL CHECKS

ENSURE NUMBER PLATE IS CLEARLY VISIBLE

NOTE: When fitting/refitting the licence plate to the vehicle, ensure there is no obstruction to licence plate vision in accordance with local authorities. If required relocate licence plate to an alternate location.

FURTHER VFPS NOTES

1. Do not attach VFPS to the vehicle using anchorages not intended for this purpose (e.g. engine mounting bolts)
2. Do not use this product for any vehicle make or model, other than those specified by the VFPS manufacturer
3. Do not remove the plaque or label from the VFPS
4. Do not modify the structure of the VFPS in any way
5. No accessory or fitment should project forward of the VFPS forward profile

IMPORTANT INFORMATION

Periodically check bolts and nuts for correct tightness, especially if traveling on rough roads.



1800 069 145
WWW.ECB.COM.AU
29 SNOOK ST CLONTARF, QLD 4019

REPLACES: 00.00.00
REVISED: 19.02.25



INSTALLATION GUIDE

MITSUBISHI TRITON 2024 ON

PN: IC24MITRIPDH TL-FR
FOR EAM166SY PRODUCT



INDICATOR/ PARK LIGHT/ DRL
WIRING HARNESS INSTALLATION

INDEX

PAGE 3

Installation Kit

PAGE 4

Stage 1 - Spare Tyre
Stage 2 - Tail Lights
Stage 3 - Rear Wiring

PAGE 5

Stage 4 - Tail Light Wiring
Stage 5 - Vehicle Wiring
Stage 6 - Inner Guard

PAGE 6

Stage 7 - Wiring Behind Fuse Box
Stage 8 - Grounding
Stage 9 - Fuse Box

PAGE 7

Stage 10 - Fuse Box
Stage 11 - Front wiring
Stage 12 - Continue Product installion

INSTALLATION KIT

1 - Triton wiring Harness	30 - 150mm zip ties
10 - Christmas Tree Clip	

MITSUBISHI TRITON 2025 ON

STAGE 1 - SPARE TYRE

If vehicle has style side body, remove spare tyre from under vehicle.



STAGE 2 - TAIL LIGHTS

Open tailgate of vehicle.

Remove two (2) PK screws from side of tail lights.

Carefully pull tail light rearward on outside to release from plastic clips.



STAGE 3 - REAR WIRING

Run wiring above spare tyre with main harness to right hand side of vehicle and follow main harness to tail light.

On left side of vehicle, follow main harness over the ADBLue tank to tail light.

Attach using zip ties at 300mm intervals.



FOR PRODUCT EAM166SY

STAGE 4 - TAIL LIGHT WIRING

Disconnect tail light.



Connect wiring harness between vehicle loom and tail light connector.

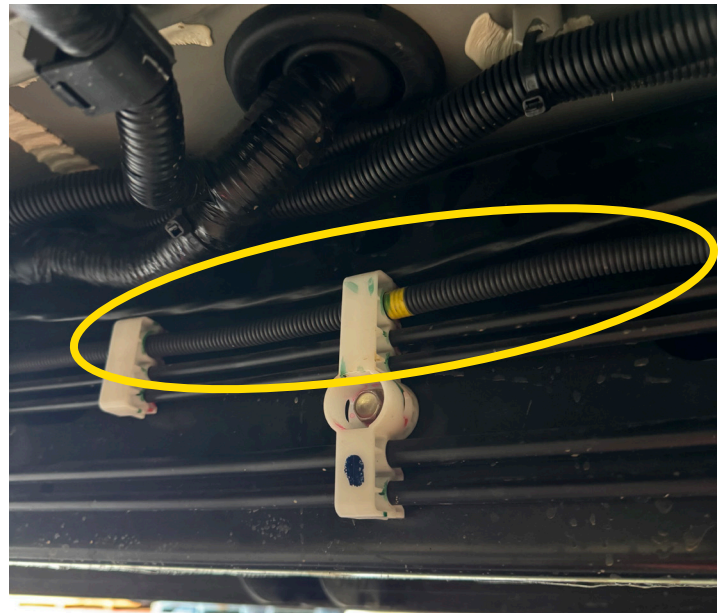


STAGE 5 - VEHICLE WIRING

Under vehicle, attach wiring to vehicles original equipment harness running up the passenger's side chassis rail.

When vehicle's harness goes into the floor, follow gearbox wiring harness along top of fuel line clips.

DO NOT attach to fuel lines.



STAGE 6 - INNER GUARD

Wiring runs from chassis to inner guard.

On inner guard attach wiring harness to holes on bottom flange of inner guard allowing some slack for chassis movement.



MITSUBISHI TRITON 2025 ON

STAGE 7 - WIRING BEHIND FUSE BOX

Run wiring under fuse box. The front and rear 10mm head bolt can be removed and the wiring slid in from the sides if required.

Attach to vehicle wiring harness if possible.

ECB Harness follows the vehicle wiring to the rear of the LH headlight.



STAGE 8 - GROUNDING

Remove 10mm head bolt on vehicle earth strap in front of fuse box. Fit harness earth strap and refit.



STAGE 9 - FUSE BOX

Run wiring to fuse box. On front of fuse box using a small screwdriver, gently lever the wiring keeper from the holder. Finish the wiring around the outside of the fuse box

Place ECB wiring harness into keeper and refit.

NOTE: Wiring direction in fuse box in yellow.



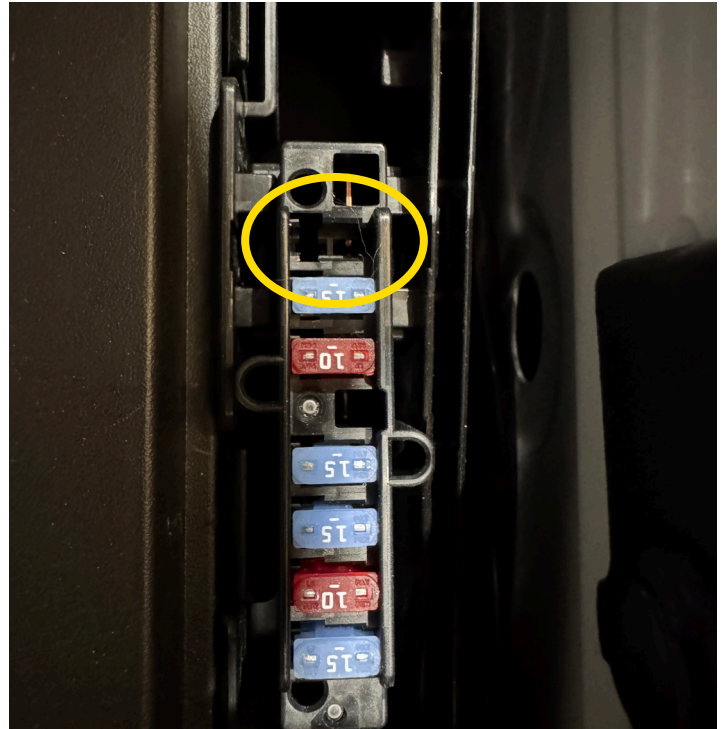
FOR PRODUCT EAM166SY

STAGE 10 - FUSE BOX

With keeper refitted, run wiring around outside of fuse box to rear corner.

Place fuse wire tap into fuse F33 at very rear of fuse box.

Refit lid of fuse box.



STAGE 11 - FRONT WIRING

Follow wiring below LH headlight and allow bullbar connection to hang.

Attach wiring harness to original harness and follow across front of vehicle to below RH headlight.

Allow to hang ready for bullbar installation.



STAGE 11 - CONTINUE BULLBAR INSTALLATION



1800 069 145
WWW.ECB.COM.AU
29 SNOOK ST CLONTARF, QLD 4019

REPLACES: 00.00.00
REVISED: 07.04.25