



**WORLD'S BEST  
ALLOY BULLBARS**

**Strongest Built  
Australian Made  
Lifetime Warranty**

**PN:BT282SY  
5T281A**



# **Fitting Guide & Owners Manual Toyota 79 Series 7-17 on**

Winch Compatible Big Tube Bar and Brush Bar Set  
VEHICLE FRONTAL PROTECTION SYSTEM (VFPS)  
FOR AIR BAG & ADR COMPLIANT VEHICLES

# Index

---

## **Pages 3-5**

ECB's Benefits  
Product Care

## **Pages 6-7**

Stage 1 - Vehicle Preparation  
Stage 2 to 5 - Bumper Removal  
Stage 6 - Mount Installation

## **Pages 8-9**

Stage 7 to 8 - Winch frame installation  
Stage 9 - Winch installation  
Stage 10 - Indicator wiring  
Stage 11 to 12 - Protection Bar preparation

## **Pages 10-11**

Stage 13 - Protection Bar installation  
Stages 14 to 16 - Side Step Fitment  
Stage 17 - Side Step Fitment continued

## **Pages 12-13**

Stage 18 to 22 - Side Rail Fitment  
Stage 23 - Side Rail Fitment (cont'd)  
Installation kit

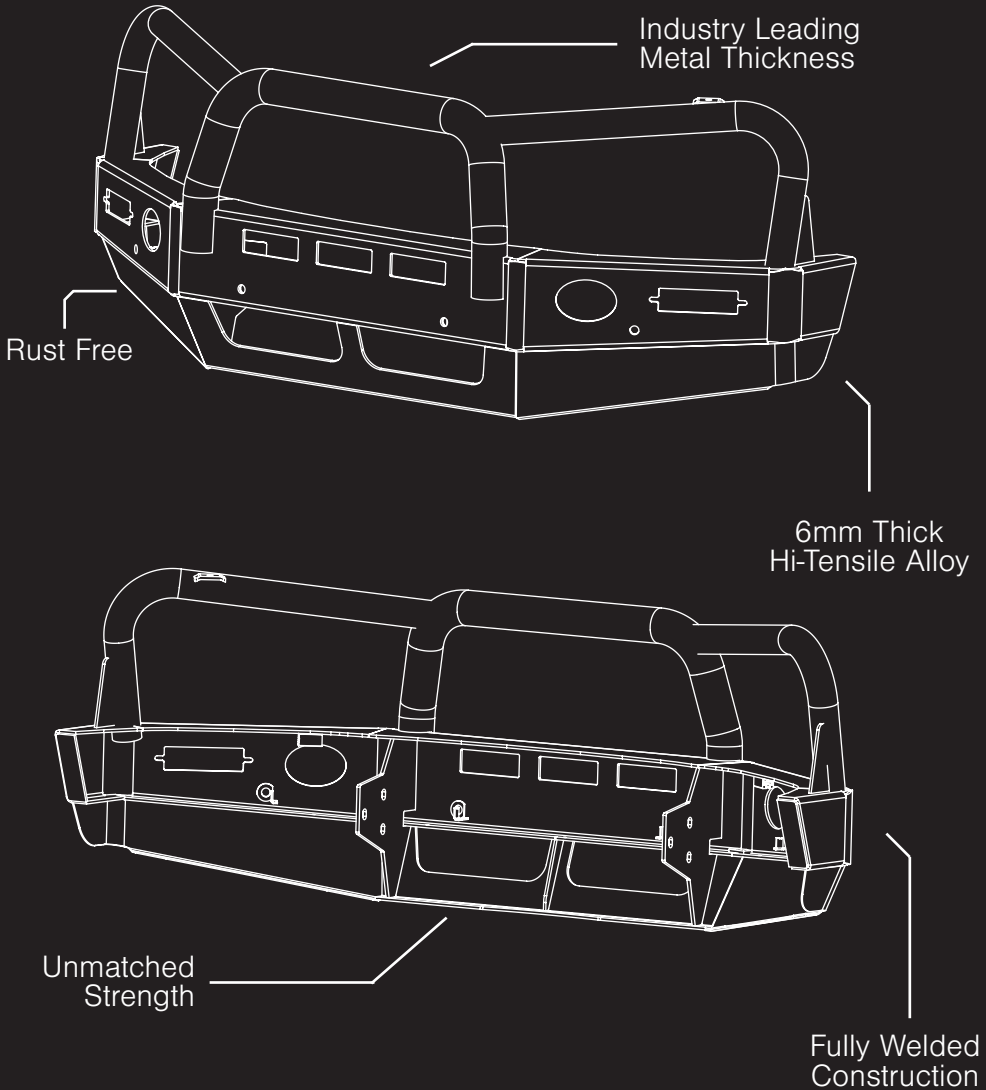
## **Pages 14-15**

Final Checks  
Finished Product

## **Pages 16-17**

Warranty Registration  
Notes

# The Features of ECB



# ECB's Benefits

---

## **Built to Perform - Not to a Price**

ECB are proud to claim that their channels are not jigsaw puzzles that are bolted together, or even multiple sections welded together. Where any welding is required, it is done to the highest standards by qualified welders, not machines.

## **Anti-Corrosive Nature of Alloy**

The composition of ECB's alloy has a very high resistance to corrosion. Rust not only looks unappealing but greatly reduces the strength of the metal. Rust can and will weaken the structural integrity of a steel bullbar effectively rendering it useless over time.

## **Australian Made**

Established in 1971, we utilise over 46 years of experience designing, engineering and building products in Australia to suit Australian conditions. We can ensure the best quality controls and help support the local economy and employ over 90 proud Australians.

## **Weight Saving Benefits**

An ECB alloy bullbar is typically half the weight of a steel bullbar. Unnecessary suspension upgrades are not required. The reduced weight also contributes to increased fuel economy and less wear and tear on tyres, suspension and braking components.

## **Welds That Work**

ECB uses only the strongest welds and welding techniques to ensure every product is as structurally sound as possible. MIG (Metal Inert Gas) welding techniques are employed ensuring the welds are as thick as the thickest section of alloy's being joined together.

## **Lifetime Warranty**

ECB provide a lifetime warranty and consumer guarantee on all of our manufactured products. This guarantee highlights the confidence in our ability and provides complete peace of mind for your purchase for the lifetime you own your vehicle.

# Product Care

---

## Polished Products

Being a premium mirror polished finish, regular maintenance will be required to keep that iconic ECB shine. We recommend using our own brand of Aluminium Polish. This formula has been tried and tested and in our opinion is the world's best standard.

**Directions:** Apply a small quantity of Aluminium Polish to a clean soft cloth and rub the metal surface. The longer the rubbing the brighter the surface becomes. Wipe off Aluminium Polish with clean soft cloth. Also suitable for motorised buffing machines. **Note: There are more specific details on the polish bottle. Please read before use.**

## Powdercoated Products

Our powdercoated finishes are very low maintenance. Infact there is actually very little you will ever need to do for this product. Just clean it as you would your car and it will stay looking good as new.

## ECB Aluminium Polish

When you're looking for that showroom finish look for your polished automotive products, you can depend on the no compromise quality of East Coast Bullbars Aluminium Polish. This specifically designed product is the best polish available and we guarantee that this \$#!+ works. With over 40 years of manufacturing polished alloy products we have trialed a large range of different polishes on the market and believe without a doubt that nothing beats the finish quality of East Coast Bullbars Aluminium Polish.

East Coast Bullbars Aluminium Polish is excellent for use by hand and is ideal for polished bullbars, nudge bar and stainless steel products. This polish will clean, polish and protect your product from the elements whilst bringing your products back to that showroom finish look.



# BT282SY / 5T281A

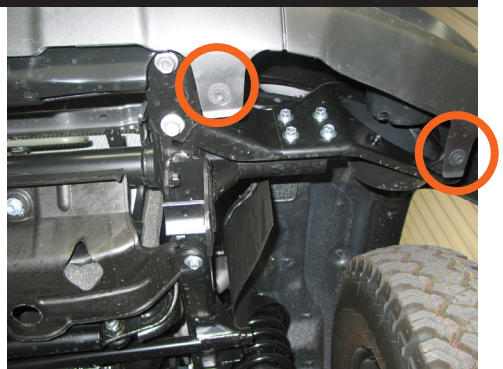
## Stage 1

- Test drive vehicle to ensure all driver assists are correctly working and to gauge effectiveness. Park on a flat level surface.
- Apply parking brake and lift bonnet.
- Unwrap ECB Protection bar and disconnect mounts. Discard bolts.
- Ensure these instructions are left the vehicle owner / operator.



## Stage 2

- From gap between bumper and lower headlight panel, remove five (5) plastic push pull clips.
- Under vehicle, remove four (4) 10mm head bolts from lower flange of bumper skin.



## Stage 3

- On inside corners of bumper, loosen only one (1) 10mm head nut (per side).
- In corners of front lower grille section, remove two (2) 10mm head bolts.
- Remove bumper skin



# 79 SERIES SINGLE CAB AND BRUSH BARS

- From top of step section, remove three (3) 14mm head bolts (per side).
- Next to fog light covers, remove four (4) 14mm head bolts (per side).
- Remove step section from vehicle



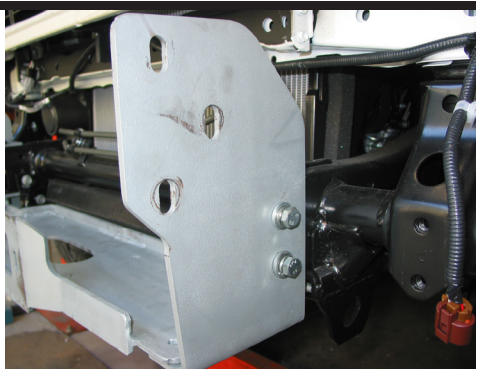
## Stage 5

- From top of chassis rail, remove rear 17mm head bolt and nut.
- Remove bumper attachment assembly.



## Stage 6

- Install ECB steel mounts to front of chassis rail using two (2) M10 x 1.25 x 25mm bolts, spring washer and flat washers in the sides of the chassis rail.



# BT282SY / 5T281A

## Stage 7

- Install ECB winch frame to lower flange of ECB steel mount using two (2) M12 x 1.25 x 40mm bolts, flat washers, spring washers and nuts (supplied) in rear holes.
- Fit winch support bracket to top of chassis rail using one (1) M12 x 1.25 x 180mm bolt, flat washers, spring washer and nut (supplied) (per side) and one (1) M12 x 40 bolt, flat washers, spring washer and nut to the front hole (supplied) (per side).

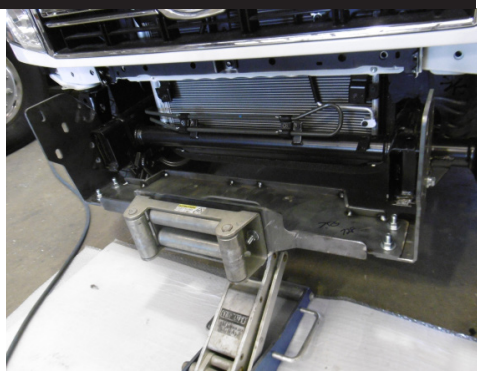
- **TIGHTEN ALL BOLTS**



## Stage 8

- Align mounts ensuring correct distance between mount for protection bar. NOTE: Protection bar fits to outside of mounts.
- Centralise ECB winch frame to vehicle.

- **TIGHTEN ALL BOLTS**



## Stage 9

- Install winch to ECB winch frame using winch manufacturers instructions.
- Where required, fit control box to control box mount (supplied) using three (3) M6 x 25 bolts flat washer and nyloc nuts (supplied).





# 79 SERIES SINGLE CAB AND BRUSH BARS

---

## Stage 10

- Disconnect indicator and parking lights on vehicle. Install ECB quick click wiring harnesses (supplied) between disconnected harness and indicator / park lights on vehicle. Run wiring out from under lights ensuring clearance from sharp edges and moving parts.

---

## Stage 11

- Fit ECB LED indicator / park lights into protection bar as per instructions supplied with the LED indicator kit.  
NOTE: Ensure park light is to top.



---

## Stage 12

- Attach 6mm clip lock trim (supplied) to top of ECB protection bar. NOTE: Trim off lower edge on an angle so trim will sit flush with end of protection bar.



Trim lower edge



# BT282SY / 5T281A

## Stage 13

- Fit ECB Protection Bar to outside of the ECB steel mount using six (6) M12 x 1.75 x 40mm bolts, flat washers, spring washer and M12 x 1.75 nut (supplied).
- Align Protection Bar with vehicle. Finger tighten bolts.



## Stage 14

- Remove original equipment steps (if fitted).
- Working one side at a time, remove two (2) 12mm head bolts from gearbox cross member.
- Use clamp or jack to stop chassis cross member dropping.



## Stage 15

- Place 6mm spacers (supplied) between support and mounting bracket on step.
- Insert M10 x 1.5 x 140mm bolt (10.9 rating) and M10 flat washer and M10 x 1.5 nyloc nut (supplied).
- Do not tighten.



# 79 SERIES SINGLE CAB AND BRUSH BARS

## Stage 16

- For rear support bracket, slide chassis mount plate (supplied) on inside of fuel lines on passenger side.
- Use M12 x 1.75 x 40mm bolts, flat washers and M12 x 1.75 nyloc nuts (supplied) to secure steps to mounting plate, on both sides, finger tighten only.
- On driver side remove 12mm head bolt from wiring harness, (retain bolt for refitment). Slide mounting plate between brake lines and replace bolt.
- Place convoluted tubing over lines where they cross the mounting bracket to protect the lines. Secure in position using silicon inside the tubing or similar. Move lines away from mounts to ensure they do not rub.



## Stage 17

- Using paper tape, tape rear of tube on protection bar.
- Fit side rail onto step. Slide over sleeve on step.
- Underside of step, place 6mm spacer between mounting bracket on step and rail. Use M8 x 30mm bolts, flat washers and nyloc nuts (supplied).
- Finger tighten only.



## Stage 18

- Align steps to vehicle and tighten all nuts.



# BT282SY / 5T281A

## Stage 19

- Align protection bar and side rails on vehicle, finger tighten bolts on protection bar.



## Stage 20

- Fit rail end caps mark where they are positioned on shoulders of protection bar.
- Using end cap as a guide drill 10mm hole through shoulder pipe.

Note: Inside of tube is a solid section to remove the probability of pulling out in an accident. Ensure drilled hole is at the correct angle.

- Drill hole in front of shoulder to 17mm with a sharp drill bit. Remove internal burr from tube to ensure bolt cap will catch correctly on inside of tube.



## Stage 21

- Secure rail to shoulder with M10 x 1.5 x 90mm hex cup bolt and M10 spring washer (supplied).
- Slowly tighten up until secure and into position.
- Fit bolt cap to 17mm hole.



# 79 SERIES SINGLE CAB AND BRUSH BARS

## Stage 22

- From underside of step most forward bracket, drill two 6mm holes in platform using mount as a guide.
- Secure with black 6mm x25mm screws, flat washer and M6 nyloc nut (supplied).



## Stage 23

- Check protection bar is aligned and tighten all bolts.
- Connect and check lights for correct operation.

## Installation Kit

1 - Pair ECB steel mounts	4 - M10 x 1.25 x 25mm bolts
1 - Steel Winch frame	2 - M10 x 1.5 x 90mm hex cap head bolts
1 - Pair Winch frame support brackets	12 - M10 flat washers
1 - Control box mount	6 - M10 spring washers
1 - Pair rear chassis mounting plates	4 - M10 x 1.5 nyloc nuts
2 - Alloy 6mm step spacer	4 - M8 x 30 bolts
8 - 25mm x 6mm, 11mm hole gearbox spacer	8 - M8 flat washers
2 - Side bar urethane bolt caps	4 - M8 nyloc nuts
2 - Side bar alloy end caps	3 - M6 x 25mm bolts
2 - M12 x 1.25 x 180mm bolts	4 - M6 x 25 Black combo screws
10 - M12 x 1.25 x 40mm bolts	10 - M6 flat washers
8 - M12 x 1.75 x 40 bolts	7 - M6 Nyloc nuts
40 - M12 flat washers	1 - ECB Indicator / Park kit (ICLED104ECB)
12 - M12 spring washers	1 - Quick click kit (IC07LC79INDH)
12 - M12 x 1.25 nuts	1 - 2100mm length 6mm clip lock trim
8 - M12 x 1.75 Nyloc nuts	2 - 165mm length 6mm clip lock trim
4 - M10 x 1.5 x 140mm bolts	10 - 300mm Zip ties

# Final Checks & Fitting Kit

---

## Ensure Number Plate is Clearly Visible

Note: When fitting/refitting the license plate to the vehicle, ensure there is no obstruction to license plate vision in accordance with local authorities. If required relocate licence plate to an alternate location.

## Further VFPS Notes

1. Do not attach VFPS to the vehicle using anchorages not intended for this purpose (e.g. engine mounting bolts).
2. Do not use this product for any vehicle make or model, other than those specified by the VFPS manufacturer.
3. Do not remove the plaque or label from the VFPS.
4. Do not modify the structure of the VFPS in any way.
5. No accessory or fitment should project forward of the VFPS forward profile.
6. **Ensure these instructions are left with the vehicle owner and/or operator.**

## Important Information

Periodically check bolts and nuts for correct tightness, especially if traveling on rough roads.

# Finished Product

---



NOTE: Non winch bar shown. Winch should protrude from lower opening in skirt

# Warranty Registration

---

## Contact Details

Name: \_\_\_\_\_

Address: \_\_\_\_\_

Product: **BT282SY / 5T281A** \_\_\_\_\_

Email: \_\_\_\_\_

Phone: \_\_\_\_\_

Work Order Number: \_\_\_\_\_

You can find this on the silver label  
of your ECB product.

By submitting this registration you automatically subscribe to ECB's mail outs. You  
can unsubscribe at any time.

## Please Post To:

PO Box 122 Margate QLD 4019

## Or Register Online

For online registration please go online to [www.ecb.com.au/TBC](http://www.ecb.com.au/TBC). If you have any  
questions please contact our national office on 1800 069 145 or [www.ecb.com.au](http://www.ecb.com.au).







REPLACES:11.02.19

REVISED: 07.10.22

**Endnotes:**

07.09.22 - Updated from BT280 to take brush bars - Kevin

09.09.22 - Checked by Annabelle Casinillo

00.00.22 - Checked by Steve Davies

00.00.22 - Checked by Stephen Montgomery

08.09..22 - Checked by Ben Meddows

7.10.22 - Completed by Kevin Aland



# **Strongest Built Australian Made Lifetime Warranty**

1800 069 145  
[www.ecb.com.au](http://www.ecb.com.au)

29 Snook St, Clontarf QLD 4019  
PO Box 122, Margate QLD 4019