



PN:BT188SY



# Fitting Guide & Owners Manual

**TOYOTA HIACE**

**05/190N**

Big Tube Bar with bumper lights  
VEHICLE FRONTAL PROTECTION SYSTEM (VFPS)  
FOR AIR BAG & ADR COMPLIANT VEHICLES

# Index

---

## **Pages 3-5**

ECB's Benefits  
Product Care

## **Pages 6-7**

Stage 1 - Vehicle preparation  
Stage 2 - Top radiator cover  
Stage 3 - Top bumper fixings  
Stage 4 - Electrics disconnection  
Stages 5 to 6 - Bumper cover removal

## **Pages 8-9**

Stage 7 - Bumper cover removal (Cont'd)  
Stage 8 - Air Dams  
Stages 9 to 10 - Mounting bracket  
Installation  
Stage 11 - Bumper Trim  
Stage 12 - Sensor wiring

## **Pages 10-11**

Stage 13 - Remove sonar unit  
Stage 14 - Remove Park/ DRL Light  
Stage 15 - Sonar wiring  
Stage 16 - Air dams  
Stage 17 - Sonar Installation  
Stage 18 - Park sensor installation

## **Pages 12-13**

Stage 19 - Light wiring  
Stage 20 - Indicator fitment  
Stage 21 - Bumper light fitment  
Stage 22 - Clip lock trim  
Stage 23 - Protection bar fitment  
Stage 24 - Connections, Checks and  
Testing

## **Pages 14-15**

Final Checks & Installation Kit

## **Pages 16-17**

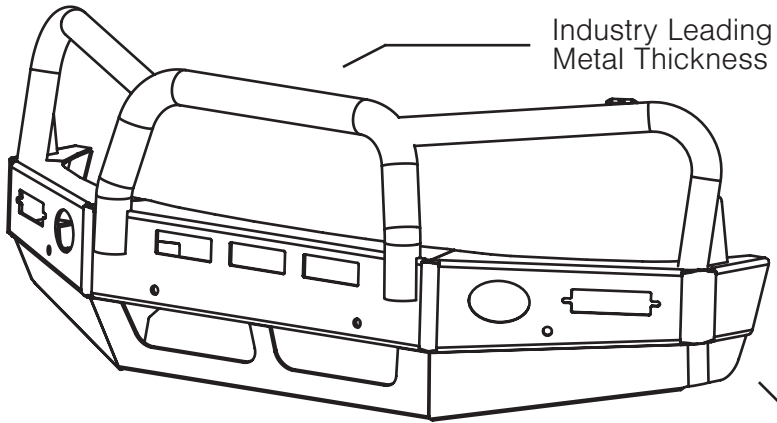
Finished Product  
Warranty Registration

## **Pages 18-19**

Notes

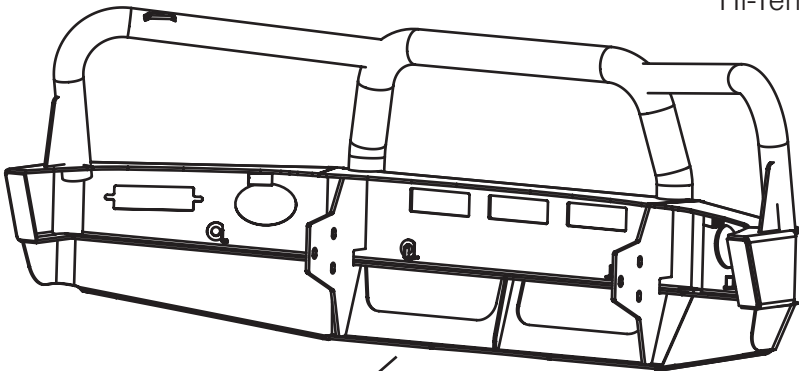
# The Features of ECB

---



Industry Leading  
Metal Thickness

6mm Thick  
Hi-Tensile Alloy



Unmatched  
Strength

Fully Welded  
Construction

# ECB's Benefits

---

## **Built to Perform - Not to a Price**

ECB are proud to claim that their channels are not jigsaw puzzles that are bolted together, or even multiple sections welded together. Where any welding is required, it is done to the highest standards by qualified welders, not machines.

## **Anti-Corrosive Nature of Alloy**

The composition of ECB's alloy has a very high resistance to corrosion. Rust not only looks unappealing but greatly reduces the strength of the metal. Rust can and will weaken the structural integrity of a steel bullbar effectively rendering it useless over time.

## **Australian Made**

Established in 1971, we utilise over 46 years of experience designing, engineering and building products in Australia to suit Australian conditions. We can ensure the best quality controls and help support the local economy and employ over 90 proud Australians.

## **Weight Saving Benefits**

An ECB alloy bullbar is typically half the weight of a steel bullbar. Unnecessary suspension upgrades are not required. The reduced weight also contributes to increased fuel economy and less wear and tear on tyres, suspension and braking components.

## **Welds That Work**

ECB uses only the strongest welds and welding techniques to ensure every product is as structurally sound as possible. MIG (Metal Inert Gas) welding techniques are employed ensuring the welds are as thick as the thickest section of alloy's being joined together.

## **Lifetime Warranty**

ECB provide a lifetime warranty and consumer guarantee on all of our manufactured products. This guarantee highlights the confidence in our ability and provides complete peace of mind for your purchase for the lifetime you own your vehicle.

# Product Care

---

## Polished Products

Being a premium mirror polished finish, regular maintenance will be required to keep that iconic ECB shine. We recommend using our own brand of Aluminium Polish. This formula has been tried and tested and in our opinion is the world's best standard.

**Directions:** Apply a small quantity of Aluminium Polish to a clean soft cloth and rub the metal surface. The longer the rubbing the brighter the surface becomes. Wipe off Aluminium Polish with clean soft cloth. Also suitable for motorised buffing machines.

**Note:** There are more specific details on the polish bottle. Please read before use.

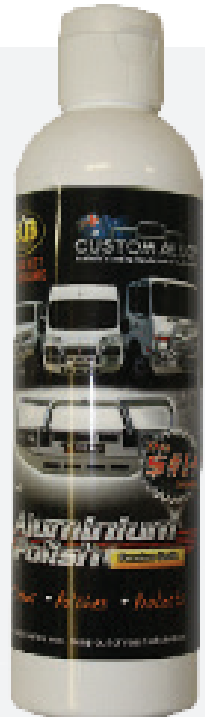
## Powdercoated Products

Our powdercoated finishes are very low maintenance. Infact there is actually very little you will ever need to do for this product. Just clean it as you would your car and it will stay looking good as new.

## ECB Aluminium Polish

When you're looking for that showroom finish look for your polished automotive products, you can depend on the no compromise quality of East Coast Bullbars Aluminium Polish. This specifically designed product is the best polish available and we guarantee that this \$#!+ works. With over 40 years of manufacturing polished alloy products we have trialed a large range of different polishes on the market and believe without a doubt that nothing beats the finish quality of East Coast Bullbars Aluminium Polish.

East Coast Bullbars Aluminium Polish is excellent for use by hand and is ideal for polished bullbars, nudge bar and stainless steel products. This polish will clean, polish and protect your product from the elements whilst bringing your products back to that showroom finish look.



# BT188SY

## Stage 1

- Test drive vehicle to ensure all driver assists are correctly working and to gauge effectiveness. Park on a flat level surface.
- Apply parking brake and lift bonnet.
- Unwrap ECB Protection bar and disconnect mounts. Discard bolts.
- Ensure these instructions are left with the vehicle owner and/or operator.



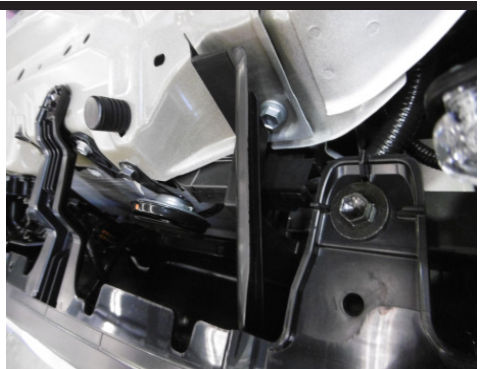
## Stage 2

- Remove top cover from grille, nine (9) push pull plugs.



## Stage 3

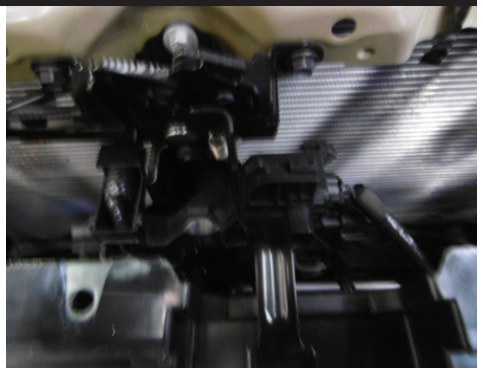
- Remove three (3) 10mm head bolts beside headlight and centre of grille and four (4) 10mm head bolts top of grille.
- Pull up on clips beside headlight and pull bumper forward slightly.



# Toyota Hiace 05/19on

## Stage 4

- Disconnect parking sensors and sonar next to bonnet latch. Three (3) connectors, two (2) near upright and one (1) o rear of sonar unit.



## Stage 5

- Underside of vehicle remove fourteen (14) push pull plugs, two (2) 10mm head screws and four (4) 10mm head bolts.
- Remove under belly guard.



## Stage 6

- From inside wheel arch remove one (1) push pull plug.
- Gently pull side guard away from vehicle.

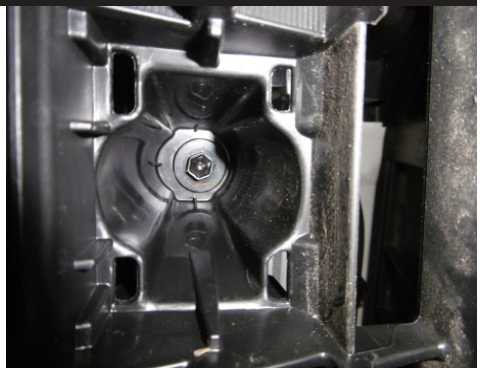
**CAUTION:** Catch area at side of bumper can be easily ripped away from the bumper skin. Care is required.



# BT188SY

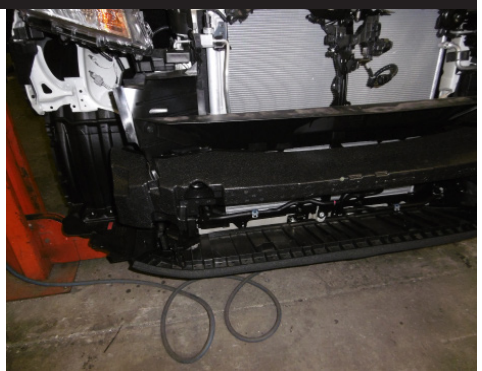
## Stage 7

- Lower grille remove tow point covers, unclip lower section by pushing down on clips and remove cover.
- Remove two (2) 10mm head bolts.
- Carefully remove plastic bumper.



## Stage 8

- Remove foam from bumper support.
- Remove upper and lower air dams two (2) push pull clips either side of centre air dam, side air dams gently pull away from vehicle.



## Stage 9

- Remove crossmember from vehicle.
- Fold hanger clips away from vehicle and as flat as possible to mounting area.
- Slide ECB steel mounting bracket (supplied) to bumper support.
- Install inner mounting brackets to steel mounts using M10 x 1.5 x 40 bolts, flat washers, spring washers and nuts. Finger tighten only.
- Fit to tow pin hole in vehicle cross member using M10 x 1.5 x 120mm bolt, flat washer, spring washer and plate with nut on wire inside crush can from rear. Cut wire or wind into rear of crush can.





# Toyota Hiace 05/19on

## Stage 10

- Refit and secure to vehicle using four (4) M10 x 1.25 x 40mm bolts, flat washers and spring washers. **Finger tighten only.**
- Measure inner mounting brackets of protection bar and outer of ECB steel mounting brackets. **Align mounts and tighten all bolts.**



## Stage 11

- Find template (supplied) with this instruction, check measure to ensure correct sizing.
- Using a sharp pair of scissors, cut template (supplied) and join where required.
- Mask up area to be cut to avoid any damage. Mark cut lines using template. Ensure lines are straight and correct.
- Trim bumper using a jigsaw or similar.



## Stage 12

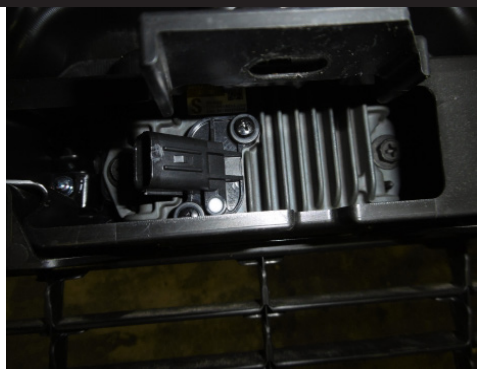
- Remove parking sensors from bumper.
- Extend wiring using solder joiners and single core wire 200mm (supplied). Place wiring through bumper as extending.
- Place exposed wiring into convoluted tubing (supplied).



# BT188SY

## Stage 13

- To remove sonar from bumper, unclip grille from bumper, remove three (3) philips head screws, one (1) each side of sonar and one (1) centre of grille.
- Remove two (2) 10mm head bolts and one (1) screw from back of sonar.



## Stage 14

- Remove Park light/DRL's from bumper, five (5) phillip head screws.
- Should bumper parking light/DRL's not be present in the bumper, drill hole mid way down the blanking area large enough to fit wiring harness .
- This is to allow access for fog light and indicator DRL harness .



## Stage 15

- Unclip junction box just under bonnet release and redirect sonar wiring out oppsite site of box, reclip box once done. Remove tape to allow full harness length.
- Feed harness through vents in bumper when refitted.



# Toyota Hiace 05/19on

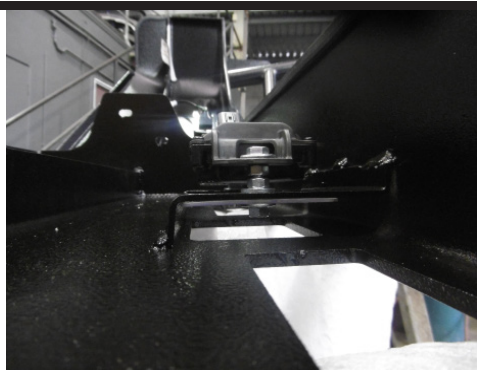
## Stage 16

- Refit air dams. Trim lower section of air dam as per picture.
- In reverse of steps 2 to 8, reassemble grille and bumper. Do not refit under belly guard at this stage.



## Stage 17

- Fit sonar unit and plastic cover, place two (2) M6 x 30mm bolts, flat washers through sonar unit from rear, flat washer and nuts (supplied). **Tighten all bolts.** Place nut and washer (supplied) on each bolt.
- Fit to protection bar as per picture. Place plastic cover on front and secure using flat washers and nyloc nuts (supplied).



## Stage 18

- Fit parking sensors to protection bar using brackets supplied, M6 x 20mm bolts, flat washers and nyloc nuts (supplied).
- **CAUTION:** light pressure only is required. Excessive pressure will cause false readings from sensor.



# BT188SY

---

## Stage 19

- Disconnect indicator and parking lights on vehicle. Install ECB quick click wiring harnesses (supplied) between disconnected harness and indicator / park lights on vehicle. Run wiring out from under lights ensuring clearance from sharp edges and moving parts.
- Disconnect fog lights. Connect ECB Quick Click fog light wiring harness (supplied) into original wiring harness. Feed wiring through bumper to front.

---

## Stage 20

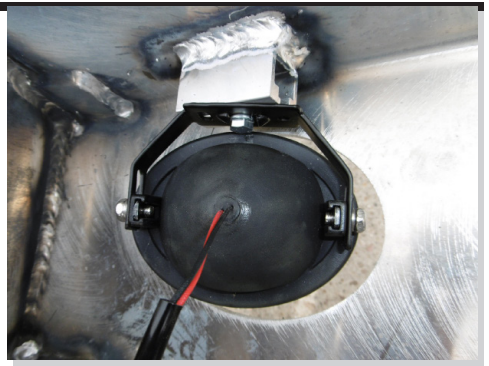
- Fit ECB LED indicator / park lights into protection bar as per instructions supplied with the LED indicator kit.  
NOTE: Ensure park light is to top.



---

## Stage 21

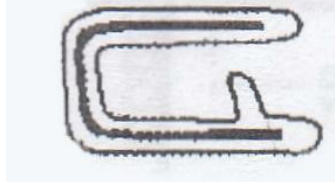
- Attach ECB bumper lights to protection bar. Place M6 x 20mm bolts, spring washers (supplied) through light mount from inside and attach nut to top. Slide assembly into light mount in Protection bar and centralize light to hole.  
**TIGHTEN FIRM ONLY.**
- Install bumper light surrounds (supplied) to bumper light openings lights .



# Toyota Hiace 05/19on

## Stage 22

- Attach 6mm clip lock trim (supplied) to top of ECB protection bar. NOTE: Trim off lower edge on an angle so trim will sit flush with end of protection bar.
- Install 3mm clip lock to lower vents . Place join at top in centre.



## Stage 23

- Fit protection bar to vehicle using six (6) M12 x 1.75 x 40mm bolts, flat washers, spring washers and nuts (supplied).
- Align protection bar with vehicle.  
**TIGHTEN ALL BOLTS.**
- Connect parking sensors and sonar.
- Check fit tow hooks to ensure fitment to skirt.
- Refit under belly guard.



## Stage 24

- Test Indicators / park / DRL lights, bumper lights, parking sensors and sonar for correct operation.
- Test drive vehicle to ensure all driver assists perform as per before installation.
- Place tow hooks into tool kit of vehicle. Customer must be informed of tow hook placement in vehicle.

# Final Checks & Installation Kit

## Ensure Number Plate is Clearly Visible

Note: When fitting/refitting the licence plate to the vehicle, ensure there is no obstruction to licence plate vision in accordance with local authorities. If required relocate licence plate to an alternate location.

## Further VFPS Notes

1. Do not attach VFPS to the vehicle using anchorages not intended for this purpose (e.g. engine mounting bolts).
2. Do not use this product for any vehicle make or model, other than those specified by the VFPS manufacturer.
3. Do not remove the plaque or label from the VFPS.
4. Do not modify the structure of the VFPS in any way.
5. No accessory or fitment should project forward of the VFPS forward profile.
6. **Ensure these instructions are left with the vehicle owner and/or operator.**

## Important Information

Periodically check bolts and nuts for correct tightness, especially if traveling on rough roads.

## Installation Kit

1 - Pair ECB steel mounting brackets	16 - M6 flat washers
2 - Alloy sensor brackets	2 - M6 spring washers
2 - ECB tow hooks	6 - M6 nuts
6 - M12 x 1.75 x 40mm bolts	4 - M6 nyloc nuts
12 - M12 flat washers	1 - Perspex sonar cover
6 - M12 spring washers	1 - Indicator / park / DRL kit
6 - M12 x 1.75 nuts	1 - Quick Click Kit (IC15TOHLOIPDH)
2 - M10 x 1.5 x 120mm bolts	1 - Bumper light kit
12 - M10 x 1.25 x 40mm bolts	1 - Quick Click Kit (IC10D40S1004ECBH)
18 - M10 flat washers	2 - Fog light surrounds
14 - M10 spring washers	1 - 2500mm length 6mm clip lock
4 - M10 x 1.25 nut plate on 200mm wire	2 - 1200mm lengths 3mm clip lock
4 - M10 x 1.25 nuts	4 - 200mm lengths single core wire
2 - M6 x 30mm bolts	8 - Solder joiners
4 - M6 x 20mm bolts	2 - 200mm lengths 10mm Convoluted tubing

# Notes

---

---

---

---

---

---

---

---

---

---

---

---

---

---

---

---

---

---

---

---

---

---

---

\_\_\_\_\_

Full Name

\_\_\_\_\_

Date



# Finished Product

---





# Warranty Registration

---

## Contact Details

Name: \_\_\_\_\_

Address: \_\_\_\_\_

Product: BT188SY \_\_\_\_\_

Email: \_\_\_\_\_

Phone: \_\_\_\_\_

Work Order Number: \_\_\_\_\_

You can find this on the silver label  
of your ECB product.

By submitting this registration you automatically subscribe to ECB's mail outs.  
You can unsubscribe at any time.

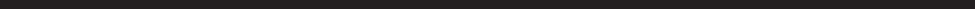
## Or Register Online

For online registration please go online to [www.ecb.com.au/TBC](http://www.ecb.com.au/TBC). If you have any questions please contact our national office on 1800 069 145 or [www.ecb.com.au](http://www.ecb.com.au).



**PN: BT188SY**  
**Please post to: PO Box 122,**  
**Margate QLD 4019**

# Notes



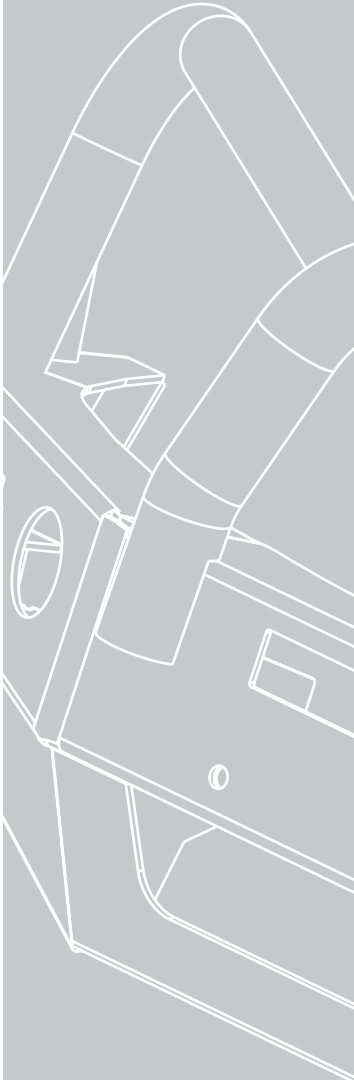
A series of 18 horizontal lines spaced evenly down the page, providing a template for writing notes.

\_\_\_\_\_   
 Full Name

\_\_\_\_\_   
 Date

REPLACES: 26.06.19

REVISED: 19.04.24



1800 069 145  
[www.ecb.com.au](http://www.ecb.com.au)

29 Snook St, Clontarf QLD 4019  
PO Box 122, Margate QLD 4019