



## INSTALLATION GUIDE

# SUBARU FORESTER 08-20 ON

PN: BS71SY



**BULLBAR WITH BUMPER LIGHTS**  
VEHICLE FRONTAL PROTECTION SYSTEM (VFPS)  
FOR AIR BAG & ADR COMPLIANT VEHICLES

# INDEX

---

## **PAGE 3**

Installation Kit

## **PAGE 4**

Stage 1 - Vehicle Testing And Preparation  
Stage 2 - Remove Headlight Washer Covers  
Stage 3 - Remove Splash Guards

## **PAGE 5**

Stage 4 - Remove Bumper Cover  
Stage 5 - Bumper Support Preparation  
Stage 6 - Remove Bumper Support

## **PAGE 6**

Stage 7 - Mount Fitment  
Stage 8 - Bumper Support Ancillary Refit  
Stage 9 - Light Wiring

## **PAGE 7**

Stage 10 - Light Wiring  
Stage 11 - Light Wiring  
Stage 12 - Light Wiring

## **PAGE 8**

Stage 13 - Bumper Trim  
Stage 14 - Camera Relocation  
Stage 15 - Bumper Refitment

## **PAGE 9**

Stage 16 - Protection Bar Lights  
Stage 17 - Clip Lock Trim  
Stage 18 - Protection Bar Installation

## **PAGE 10**

Stage 19 - Bumper Light Installation  
Stage 20 - Connections And Testing  
Stage 21 - Tow Hook In Vehicle

## **PAGE 11**

Final Checks

# INSTALLATION KIT

1 - Steel Mounting Bracket	4 - M5 Flat Washers
1 - M20 X 250mm Tow Hook (Round Ring)	2 - M5 Nyloc Nuts
6 - M12 X 1.75 X 40mm Bolts	1 - 2300mm Length, 6mm Clip Lock Trim
12 - M12 Flat Washers	2 - 500mm Lengths, 6mm Clip Lock Trim
6 - M12 Spring Washers	2 - 200mm Lengths, 6mm Clip Lock Trim
6 - M12 X 1.75 Nuts	1 - ECB LED Indicator / Park / DRL Light Kit
8 - M8 X 1.25 X 30mm Bolts (Into Captive Nuts)	8 - Cable Locks
8 - 5/16 X 1 Flat Washers	1 - Bumper Light Kit
8 - M8 Spring Washers	1 - Quick Click Kit (IC10D40S1004ECBH)
4 - M6 X 20mm Bolts	2 - Fog Light Surrounds
6 - M6 Flat Washers	1 - 5 mtr Length, Single Core Wire
2 - M6 Nyloc Nuts	1 - 3 mtr Length, 10mm Convoluted Tubing
2 - M6 Spring Washers	1 - 8mm Ring Terminal
2 - M6 Nuts	20 - 300mm Zip Ties
2 - M5 X 20mm Bolts	



Steel Mounting Bracket)  
**FITTED TO BAR**



ECB Tow Hook (Round Ring)  
(BS70\_R10M Welded To M20 X 250mm Bolt)

**FITTED TO BAR** - TAPED TO WING OF BAR WITH KIT

# SUBARU FORESTER 08-21 ON

## STAGE 1 - VEHICLE PREPARATION

Test drive vehicle to ensure all driver assists are correctly working and to gauge effectiveness.

Park on a flat level surface.

Apply parking brake and lift bonnet.

Unwrap ECB Protection Bar and disconnect mounts.  
Discard bolts.



## STAGE 2 - REMOVE HEADLIGHT WASHER COVERS

Remove headlight washer covers from bumper.  
Pull headlight washer out and unclip top clip from washer stalk.

**NOTE:** Take care not to over extend the washer stalk.



## STAGE 3 - REMOVE SPLASH GUARDS

Remove plastic engine splash guard from under vehicle,  
seventeen (17) x push pull clips and four (4) x 12mm  
head bolts.



## STAGE 4 - REMOVE BUMPER COVER

Remove six (6) x plastic push pull clips from top grille, ten (10) x plastic push pull clips from under bumper and one (1) x plastic push pull clip (per side) from bumper wing in wheel arch.

Unplug fog lights, washer lines and camera if fitted.

Carefully pull sides of bumper out from vehicle then forward to release the support clips on guard and under headlight.



## STAGE 5 - BUMPER SUPPORT PREPARATION

Remove polystyrene foam padding from front of bumper support.

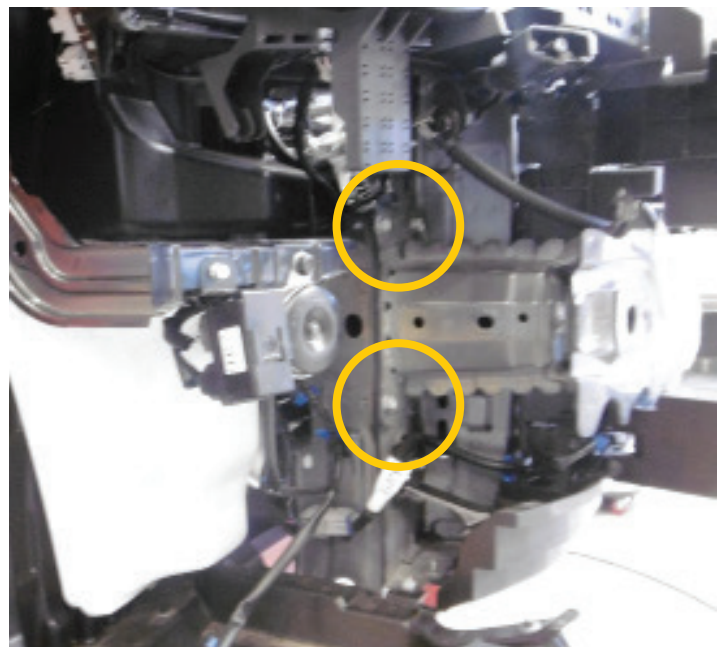
Disconnect wiring and washer lines from top and behind bumper support.

On bottom edge of bumper support, remove two (2) x 10mm head bolts from blind system to bumper support.



## STAGE 6 - REMOVE BUMPER SUPPORT

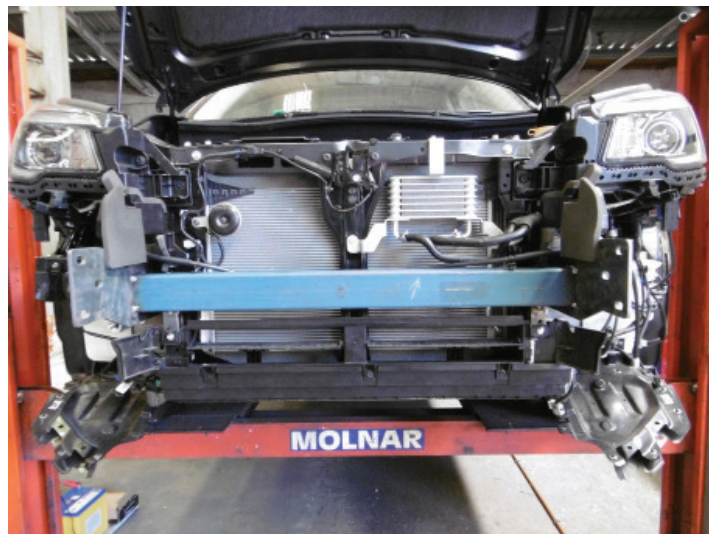
Remove bumper support from vehicle, eight (8) x 12mm head bolts at front of chassis rails.



# SUBARU FORESTER 08-21 ON

## STAGE 7 - MOUNT FITMENT

Install ECB steel mounting bracket (supplied) to vehicle using eight (8) x M8 x 30 bolts, spring washers and flat washers, into the captive nuts from where original bumper support was removed from the vehicle.



## STAGE 8 - BUMPER SUPPORT ANCILLARY REFIT

Reconnect the blind system to the vehicle using two (2) x M6 x 20 bolts, flat washers and Nyloc nuts (supplied).

Attach washer line to top of ECB steel mount using Zip ties (supplied).

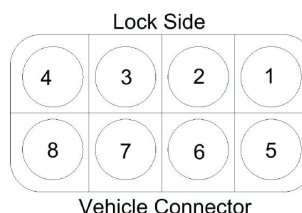
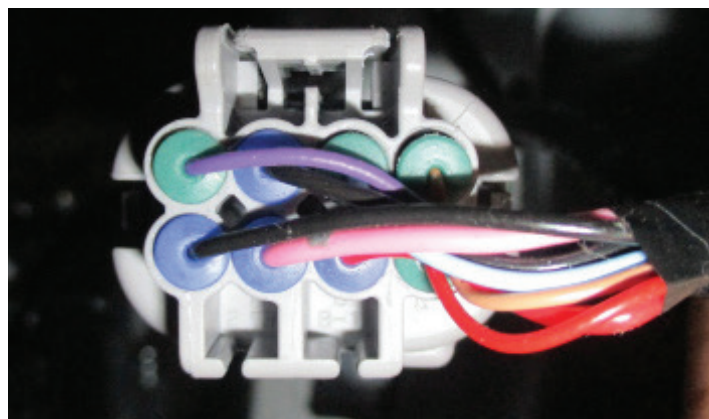


## STAGE 9 - LIGHT WIRING

From rear of headlight, splice ECB DRL (brown) and indicator (green) wire to required DRL in vehicle as set in below table.

**NOTE:** Wiring is correct at time of development. Check all wiring on your vehicle for correct outputs to lighting before any permanent wiring is completed.

PIN NUMBER	COLOUR	USE
2	LIGHT BLUE	DRL
7	PINK	INDICATOR



## STAGE 10 - LIGHT WIRING

Attach ECB ground wire (white) to body bolt for grounding of light.

At time of development, the ground wire has been run across the vehicle from the drivers to the passengers side and earthed to the body ground point behind the fuse box.



## STAGE 11 - LIGHT WIRING

On door side of dash panel, carefully remove switch panel by opening coin holder, place fingers behind switch panel and gently push out. Switch panel should unclip from dash.

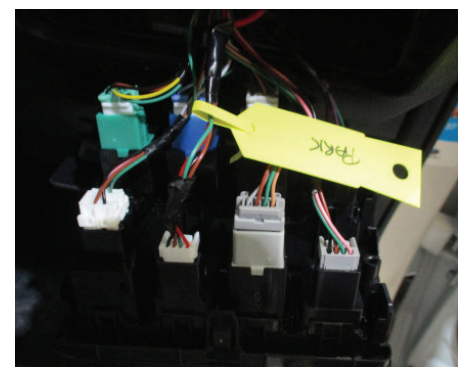
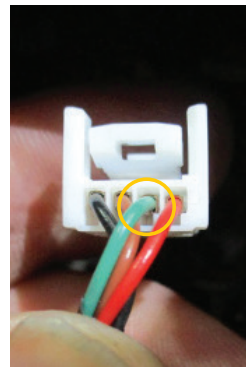
On rear of panel, select 2nd connector from steering column. On the development vehicle this was a blank panel on the front.



Attach park wire to pin 2 of this connector and run through firewall to front of the vehicle.

Attach park wire at front of vehicle to ECB parking light wire on both sides of the vehicle.

Cover wiring using convoluted tubing and zip tie wiring to existing wiring in the vehicle.



## STAGE 12 - LIGHT WIRING

Connect ECB Quick Click bumper light wiring harness (supplied) into original wiring harness

# SUBARU FORESTER 08-21 ON

## STAGE 13 - BUMPER TRIM

Mask front of bumper in the approximate area where the bumper will be cut.

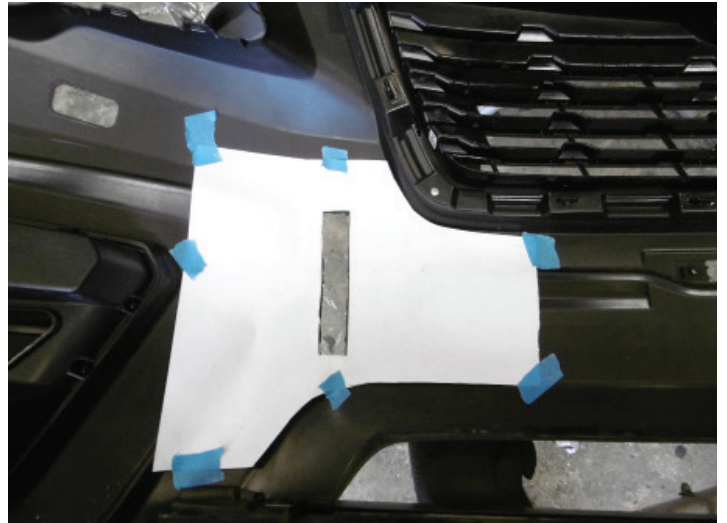
Check template for correct scale. Using a sharp pair of scissors, carefully cut the out bumper template supplied with these instructions.

Place the bumper template on the bumper aligning the marking on the template to the bumper lines. Mark the cut line on the bumper.

Double check cut lines to steel mount to ensure marking is correct.

Being as neat as possible, use a jigsaw or similar to carefully cut previously marked area of bumper. Driver side will need more trimmed out to allow for tow hook. Trim until tow hook fits into nut on steel mount.

Tidy cut line as this is a finished cut.

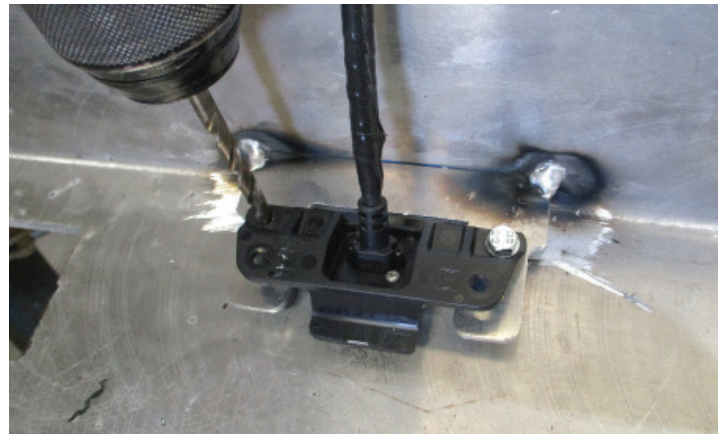


## STAGE 14 - CAMERA RELOCATION

Remove camera and housing from rear of grille.

Trim top mounting point from camera housing and relocate into Protection Bar (MY19 only). Align camera central in mounting bracket and drill two 5mm holes. Install using two (2) x M5 x 20mm bolts, flat washers and Nyloc nuts (supplied).

Remove wiring clip from headlight panel for extra length.



## STAGE 15 - BUMPER REFITMENT

From rear of bumper, remove fog lights, one (1) x plastic screw clips and one (1) x 10mm head bolt.

Refit bumper back to vehicle as per reverse of stages 2 to 4.

Ensure wiring harness are pulled through to front of bumper for easy access for completion of fitment.





## STAGE 16 - PROTECTION BAR LIGHTS

Fit ECB LED indicator / park lights / DRL into Protection Bar as per instructions supplied with the LED indicator kit.

**NOTE:** Ensure park light is to top.



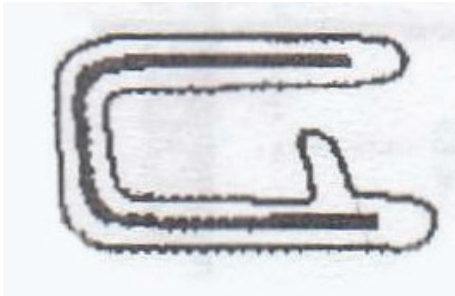
## STAGE 17 - CLIP LOCK TRIM

Attach 2300mm length 6mm clip lock trim (supplied) to top of ECB Protection Bar.

**NOTE:** Trim off lower edge on an angle so trim will sit flush with end of Protection Bar.

Attach 500mm length of 6mm lock clip trim (supplied) to each of the centre holes in the lower skirt. Trim any excess when fitted.

Attach 200mm length of 6mm clip trim (supplied) to each of the outer holes in the lower skirt



## STAGE 18 - PROTECTION BAR INSTALLATION

Install protection bar to steel mounting brackets using six (6) x M12 x 1.75 x 40mm bolts, flat washers, spring washers and nuts (supplied).

Align Protection Bar to vehicle with 5mm to 10mm gap around the bumper and the front of the Bullbar vertical.

**TIGHTEN ALL BOLTS.**



# SUBARU FORESTER 08-21 ON

## STAGE 19- BUMPER LIGHT INSTALLATION

Attach ECB bumper lights to Protection Bar.

Place M6 x 20mm bolts, spring washers (supplied) through light mount from inside and attach nut to top. Slide assembly into light mount in Protection Bar and centralise light to hole.

### TIGHTEN FIRM ONLY.

Install bumper light surrounds to cut outs with large side of surround to inside of opening.



## STAGE 20 - CONNECTIONS AND TESTING

Connect lights, camera and test for correct operation.

Test drive vehicle to ensure all driver assists work correctly.

## STAGE 21 - TOW HOOK IN VEHICLE

Ensure tow hook supplied with installation kit is left on the passenger side floor for vehicle owner and/or operator.



# FINAL CHECKS

---

## ENSURE NUMBER PLATE IS CLEARLY VISIBLE

**Note:** When fitting/refitting the licence plate to the vehicle, ensure there is no obstruction to licence plate vision in accordance with local authorities. If required relocate licence plate to an alternate location.

## FURTHER VFPS NOTES

1. Do not attach VFPS to the vehicle using anchorages not intended for this purpose (e.g. engine mounting bolts)
2. Do not use this product for any vehicle make or model, other than those specified by the VFPS manufacturer
3. Do not remove the plaque or label from the VFPS
4. Do not modify the structure of the VFPS in any way
5. No accessory or fitment should project forward of the VFPS forward profile

## IMPORTANT INFORMATION

Periodically check bolts and nuts for correct tightness, especially if traveling on rough roads.



---

1800 069 145  
WWW.ECB.COM.AU  
29 SNOOK ST CLONTARF, QLD 4019

REPLACES: 09.05.23  
REVISED: 01.07.24