



INSTALLATION GUIDE

SUBARU OUTBACK 12-20 ON

PN: BS103SY



BULLBAR WITH BUMPER LIGHTS
VEHICLE FRONTAL PROTECTION SYSTEM (VFPS)
FOR AIR BAG & ADR COMPLIANT VEHICLES

INDEX

PAGE 3

Installation Kit

PAGE 4

Stage 1 - Vehicle Testing And Preparation

Stage 2 - Bumper Removal

Stage 3 - Bumper Removal

PAGE 5

Stage 4 - Bumper Removal

Stage 5 - Bumper Removal

Stage 6 - Bumper Removal

PAGE 6

Stage 7 - Remove Bumper

Stage 8 - Remove Bumper

PAGE 7

Stage 9 - Steel Mount Installation

Stage 10 - Steel Mount Installation

Stage 11 - Trim Bumper

PAGE 8

Stage 12 - Electrical Wiring

Stage 13 - Remove Fog Lights

Stage 14 - Camera Removal

PAGE 9

Stage 15 - Camera Installation

Stage 16 - Bumper Re-Fitment

Stage 17 - Indicator/Park Light Fitment

PAGE 10

Stage 18 - Clip Lock Trim Fitment

Stage 19 - Protection Bar Installation

Stage 20 - Connect Camera Harness

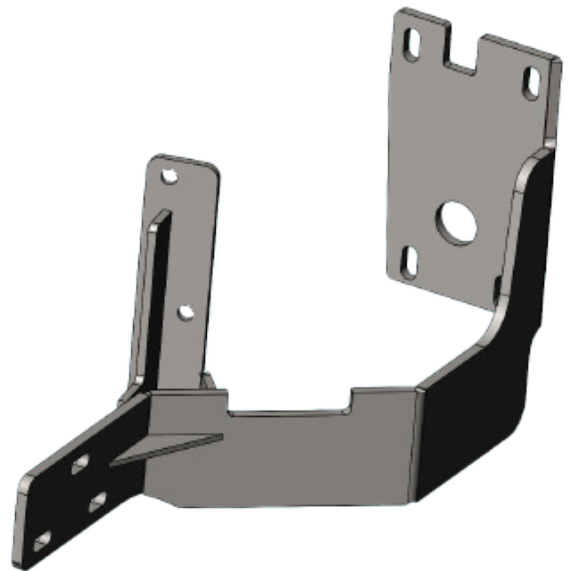
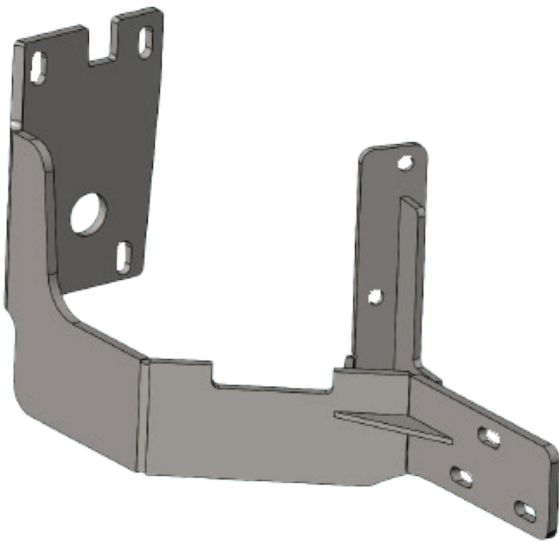
Stage 21 - Bumper Light Fitment & Light Connection

PAGE 11

Final Checks

INSTALLATION KIT

1 - Pair Steel Mounting Brackets	2 - M6 Nuts
6 - M10 X 1.5 X 40mm Bolts	2 - M5x20mm Button Head Screws
4 - M10 X 1.5 X 30mm Bolts	4 - M5 Flat Washers
16 - M10 Flat Washers	2 - M5 Nyloc Nuts
10 - M10 Spring Washers	1 - ECB LED Indicators/Parklight Kit (ICLED104ECB)
6 - M10 X 1.5 Nuts	1 - ECB Bumper Light Kit
4 - M10 X 1.5 Nuts And M10 Washer On 500mm Wire	2 - Bumper Light Surrounds
8 - M8 X 1.25 X 40mm Bolts	1 - Bumper Light Quick Click Harness (IC10D40S1004ECBH)
8 - M8 Spring Washers	6 - Cable Locks
8 - 5/16 X 1 1/4 Flat Washers	1 - 2300mm Length 6mm Clip Lock
2 - M6 X 20mm Bolts	2 - 450mm Lengths 6mm Clip Lock
2 - M6 Spring Washers	1 - 300mm Length 10mm Convuluted Tubing



Pair Steel Mounting Bracket
FITTED TO BAR

Driver's Side Chassis Mount
(YBS102SYRH)

Passenger's Side Chassis Mount
(YBS102SYLH)

SUBARU OUTBACK 12-20 ON

STAGE 1 - VEHICLE PREPARATION

Test drive vehicle to ensure all driver assists are correctly working and to gauge effectiveness.

Park on a flat level surface.

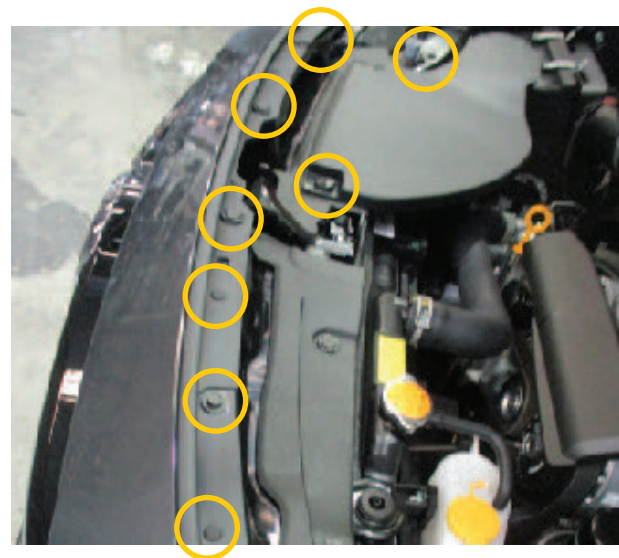
Apply parking brake and lift bonnet.

Unwrap ECB Protection Bar and disconnect mounts.
Discard bolts.



STAGE 2 - BUMPER REMOVAL

From top of bumper between headlights remove six (6) x push pull clips and two (2) x 10mm head bolts. This includes two (2) x push pull plugs on air intake cover.

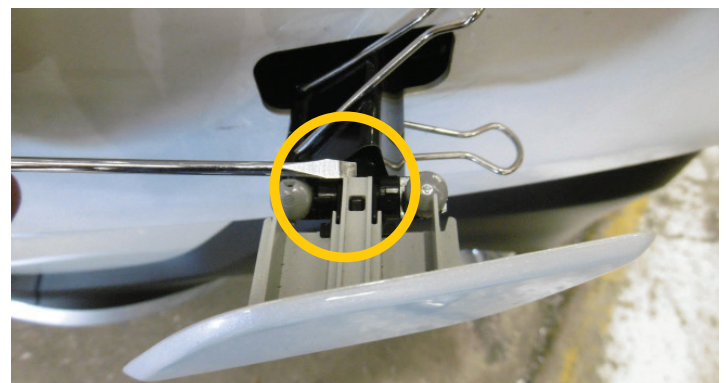


Disconnect camera harness.



STAGE 3 - BUMPER REMOVAL

If vehicle is fitted with headlight washers, gently pull away from the bumper and lift top tab to remove.



STAGE 4 - BUMPER REMOVAL

Inner top of wheel arch, remove two (2) x push pull clip per side.



STAGE 5 - BUMPER REMOVAL

Under front of bumper remove nine (9) x push pull clips.



STAGE 6 - BUMPER REMOVAL

Pull inner guard rearward and disconnect fog lights.

Gently pulling bumper out from sides of vehicle to unclip from guard and forward to unclip from under headlight.



SUBARU OUTBACK 12-20 ON

STAGE 7 - REMOVE BUMPER

Gently remove bumper.

Remove foam bumper infill pad from front of bumper support.

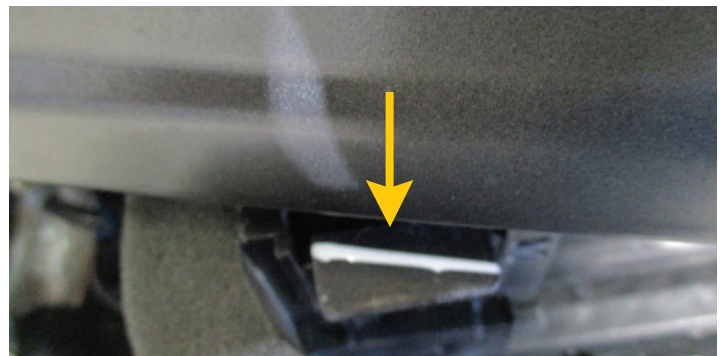


STAGE 8 - REMOVE BUMPER

From under bumper support, remove two (2) x 10mm head bolts in wind deflector.

Trim upper tab on wind deflector mount in line with front rail.

Remove four (4) X 12mm head bolts per side from bumper support to chassis. Remove bumper support.



STAGE 9 - STEEL MOUNT INSTALLATION

On chassis side of bumper support bend hanging clips flat back into plate.



Fit ECB steel mounting brackets, between bumper support and chassis. Install using four (4) X M8 x 40mm bolts, spring washers and 5/6 x 1 1/4 flat washers.

FINGER TIGHTEN ONLY.



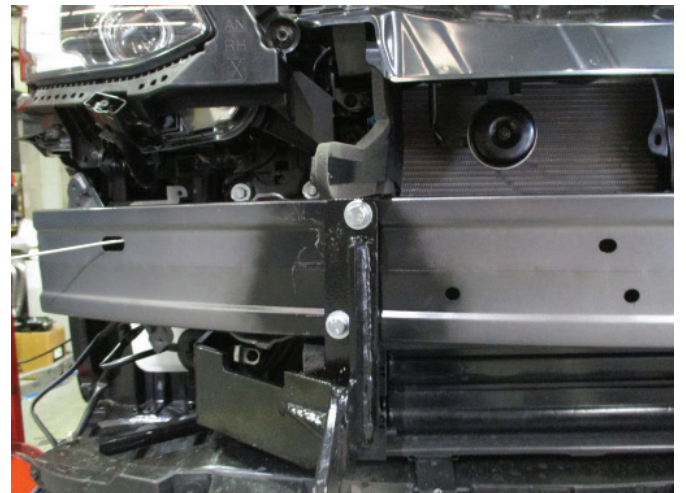
STAGE 10 - STEEL MOUNT INSTALLATION

Align steel mounting brackets to centre of vehicle. Ensure mounts are set to the outside width of the Alloy Protection Bar mounts.

Using ECB steel mounting brackets as a guide, drill two holes per side in front of bumper support.

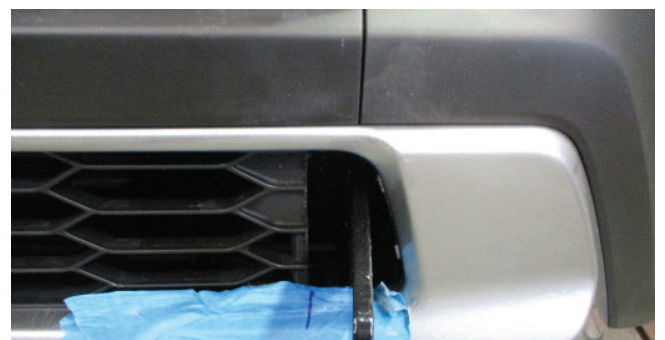
BLOW FILLINGS CLEAR AND TREAT ALL EXPOSED METAL WITH A RUST INHIBITOR.

Install ECB steel mounting brackets to bumper support using four (4) M10 x 1.5 x 30mm bolts, spring washers, flat washers and M10 x 1.5 nuts and washer on 500mm wire.



STAGE 11 - TRIM BUMPER

Use steel mounts as a guide and neatly trim lower grille to allow mounts to protrude.



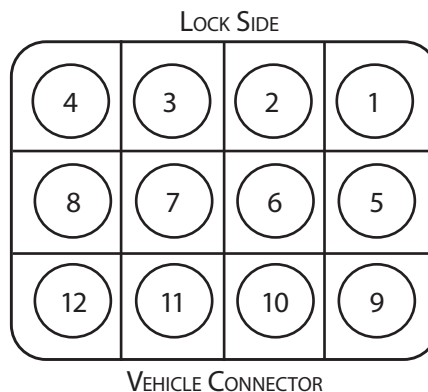
SUBARU OUTBACK 12-20 ON

STAGE 12 - ELECTRICAL WIRING

Splice ECB wiring harness behind headlight using cable locks (supplied). Ensure harness is clear of all sharp edges and moving parts. Earth ECB cable directly to body.

Connect ECB quick click fog light harness.

PLEASE NOTE: Wiring colours and numbers are correct at the time of development and may be different to your vehicle. Drivers side wiring colours used in table.

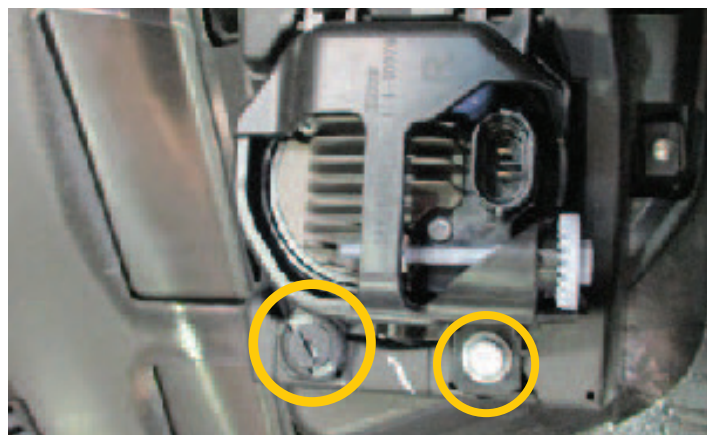


PIN NUMBER	COLOUR	USE
4	YELLOW	PARK
8	RED/BLUE	INDICATOR

STAGE 13 - REMOVE FOG LIGHTS

Remove fog lights from bumper to allow for wiring for bumper lights and indicator/park lights.

One (1) x 10mm head bolt and push pull clip per side.



STAGE 14 - CAMERA REMOVAL

Remove camera and harness from rear of bumper, two (2) x Phillips screws.

Remove locator on bottom of camera.



STAGE 15 - CAMERA INSTALLATION

Place camera into Protection Bar, use camera as a guide and drill two (2) x 5mm holes in support bracket and secure with M5 button screw, flat washers and Nyloc nuts.



STAGE 16 - BUMPER RE-FITMENT

Refit bumper in reverse as per steps 3 to 5.

Feed wiring through fog light opening for bumper lights and indicators/park light.

Leave top grille cover at this stage.



STAGE 17 - INDICATOR/PARKLIGHT FITMENT

Fit ECB LED indicator/park lights into Protection Bar as per instructions supplied with the LED indicator kit.

NOTE: Ensure park light is to top

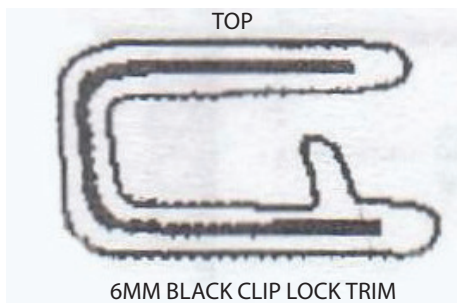


SUBARU OUTBACK 12-20 ON

STAGE 18 - CLIP LOCK TRIM FITMENT

Attach 6mm clip lock trim (supplied) to top of ECB Protection Bar.

NOTE: Trim off lower edge on an angle so trim will sit flush with end of Protection Bar.



STAGE 19 - PROTECTION BAR INSTALLATION

Attach ECB Protection Bar to inside of steel mounting brackets using three (3) x M10 X 1.5 x 40mm bolts, flat washers, spring washers and nuts (per side).

Align Protection Bar with vehicle and tighten all bolts.



STAGE 20 - CONNECT CAMERA HARNESS

Feed camera harness through original camera hole and reconnect.

Replace air intake cover and grille cover.

Place convoluted tubing over exposed harness to protect from the elements.



STAGE 21 - BUMPER LIGHT FITMENT & LIGHT CONNECTION

Attach ECB bumper lights to Protection Bar. Place M6 x 20 bolts and spring washers (supplied) through light mount from inside and attach nut to top. Slide assembly into light mount in Protection Bar and centralize light to hole.

TIGHTEN FIRM ONLY.

Install bumper light surrounds (supplied) to bumper light openings. Large side of surround to inside of opening. Connect the Indicators/park lights and bumper lights.

Check lights are working correctly.



FINAL CHECKS

ENSURE NUMBER PLATE IS CLEARLY VISIBLE

Note: When fitting/refitting the licence plate to the vehicle, ensure there is no obstruction to licence plate vision in accordance with local authorities. If required relocate licence plate to an alternate location.

FURTHER VFPS NOTES

1. Do not attach VFPS to the vehicle using anchorages not intended for this purpose (e.g. engine mounting bolts)
2. Do not use this product for any vehicle make or model, other than those specified by the VFPS manufacturer
3. Do not remove the plaque or label from the VFPS
4. Do not modify the structure of the VFPS in any way
5. No accessory or fitment should project forward of the VFPS forward profile

IMPORTANT INFORMATION

Periodically check bolts and nuts for correct tightness, especially if traveling on rough roads.



1800 069 145
WWW.ECB.COM.AU
29 SNOOK ST CLONTARF, QLD 4019

REPLACES: 09.05.23
REVISED: 16.07.24