



INSTALLATION GUIDE

RENAULT MASTER 2024 ON

PN: BRE22SY



BULLBAR

VEHICLE FRONTAL PROTECTION SYSTEM (VFPS)
FOR AIR BAG & ADR COMPLIANT VEHICLES

INDEX

PAGE 3 - 4

Installation Kit

PAGE 5

Stage 1 - Vehicle Testing And Preparation

Stage 2 - Remove grille

Stage 3 - Remove grille

PAGE 6

Stage 4 - Bumper Removal

Stage 5 - Chassis Rail

Stage 6 - Sonar Removal

PAGE 7

Stage 7 - Washer Plate

Stage 8 - Steel Gusset

Stage 9 - Mount Fitment

PAGE 8

Stage 10 - Mount Fitment

Stage 11 - Lower Deflectors

Stage 12 - Wiring Harness

PAGE 9

Stage 13 - Light Wiring

Stage 14 - Trim Bumper

Stage 15 - Refit Bumper

PAGE 10

Stage 16 - Sensor /Sonar Fitment

Stage 17 - Indicator/ DRL/ Park Light

Stage 18 - Clip Lock

PAGE 11

Stage 19 - Sonar Cover

Stage 20 - Fit Protection Bar

PAGE 12

Stage 21 - Connect Electrics

Stage 22 - Check safety features

PAGE 13

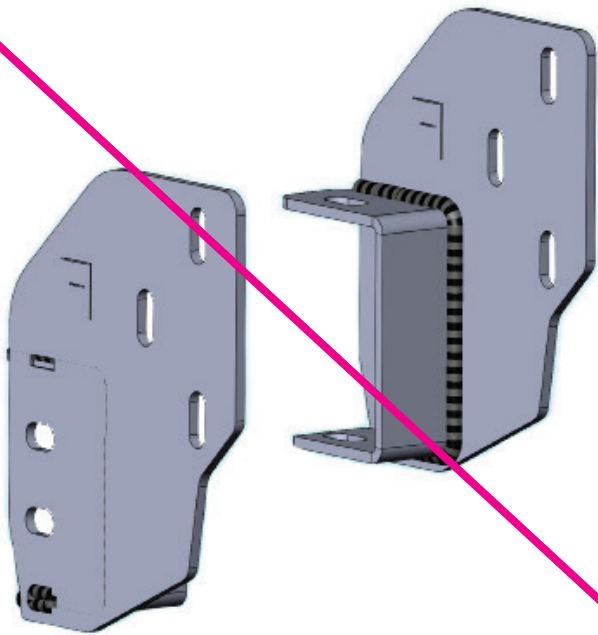
Final Checks

INSTALLATION KIT

BULLBAR

| | |
|--------------------------------|--|
| 1 - ECB Steel Mounting Bracket | 6 - M10 x 1.5 Nuts |
| 2 - 6mm Steel Brackets | 2 - M10 x 1.5 Nut & Washer On 300mm Wire |
| 2 - 4mm Steel Washer Plates | 3 - M6 x 25mm Bolts |
| 1 - Tow Pin | 6 - M6 Flat Washers |
| 6 - M12 x 1.75 x 40mm Bolts | 3 - M6 Nyloc Nuts |
| 12 - M12 Flat Washers | 1 - Pair ECB Indicator/Park/ DRL |
| 6 - M12 Spring Washers | 2 - 500mm Lengths 3 Core Wire |
| 6 - M12 1.75 Nuts | 6 - Crimp Joiners |
| 4 - M10 x 1.5 x 120mm Bolts | 6 - Cable Locks |
| 12 - M10 x 1.5 x 35mm Bolts | 1 - 2500mm Length 6mm Clip Lock |
| 22 - M10 Flat Washers | 2 - 900mm Lengths 6mm Clip Lock |
| 16 - M10 Spring Washers | 8 - 150mm Zip Ties. |

INSTALLATION KIT



Steel Mounting Bracket)
FITTED TO BAR

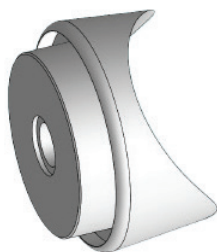
Chassis Mount Plate



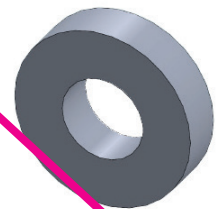
6mm Alloy Spacer



25mm X 6mm X 10mm Hole
Gear Box Spacer



Side Bar End Cap



Side Bar Bolt Cap

RENAULT MASTER 24 ON

STAGE 1 - VEHICLE PREPARATION

Test drive vehicle to ensure all driver assists are correctly working and to gauge effectiveness.

Park on a flat level surface.

Apply parking brake and lift bonnet.

DISCONNECT BATTERY

Unwrap ECB Protection Bar and disconnect mounts. Discard bolts.



STAGE 2 - REMOVE GRILLE

Remove four (4) x T30 Torx head screws from top of grille.

Release bonnet cable from bonnet release latch.



STAGE 3 - REMOVE GRILLE

Pull grille up at the top and forward around bottom to release holding clips.

Remove grille.



BRE22SY

STAGE 4 - BUMPER REMOVAL

Remove six (6) x T30 Torx head screws from top of bumper, three (3) x T30 Torx head screws from inner wheel arch (per side) and three (3) x T30 torx head screws from underside of bumper.

On passenger side, disconnect parking sensor harness.

Remove bumper.

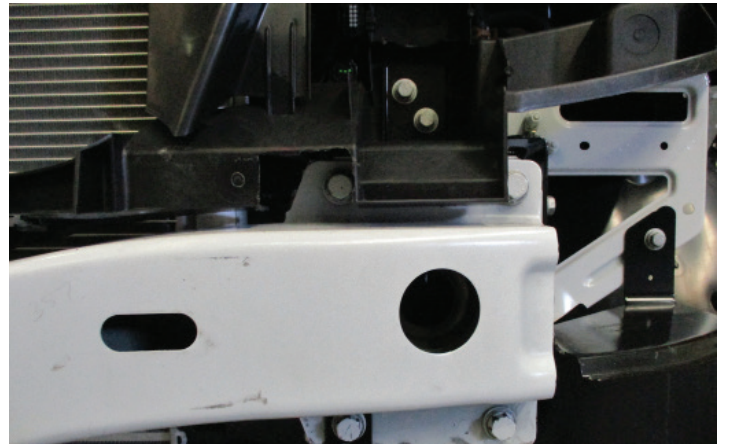


STAGE 5 - CHASSIS RAIL

To allow access of two (2) x inner bolts, cut hole in plastic radiator support rail.

NOTE: Try to remove only amount required to access the bolt and allow mount fitment.

Remove lower wind deflectors and **retain for re-fitment.**



STAGE 6 - SONAR REMOVAL

Remove sonar, disconnect harness and remove two (2) x M10 bolts from underside of bumper support.

Remove bumper support rail, four (4) x 16mm head bolts, and one (1) x 13mm head bolt in centre of rail.



RENAULT MASTER 24 ON

STAGE 7 - WASHER PLATE

Using ECB 4mm steel washer plate (supplied) as a guide, place on outside of chassis rail. Mark and drill two (2) x 10mm holes through rail.

On right hand side, drill through bracing for tow hook on inside rail.

NOTE: Washer plate must be located as per photo and drill needs to be level and straight to ensure internal plate is in correct position.

Blow filings clear and treat all exposed metal with a rust inhibitor.



STAGE 8 - STEEL GUSSET

Fit ECB steel gusset plate (supplied) onto inside of chassis rail using the washer plate (supplied) on the outside of the rail.

For top hole use one (1) x M10 x 1.5 x 120mm bolt, M10 flat washers, M10 spring washers and M10 x 1.5 nuts, per side.

For lower hole use one (1) x M10 x 1.5 x 120mm bolt, M10 flat washer, M10 spring washer with nut and washer on 300mm wire (per side).

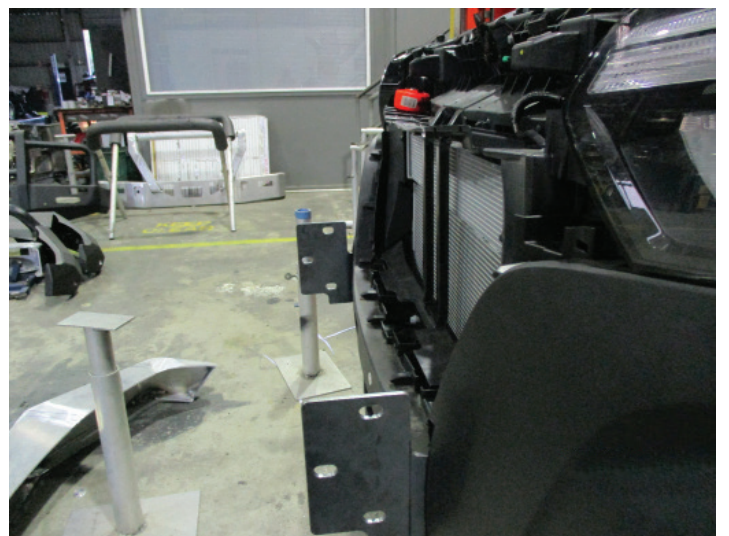


STAGE 9 - MOUNT FITMENT

Fit ECB steel mounting bracket onto chassis rail, centre to chassis rail, and secure with M10 x 1.5 x 35mm bolts, M10 flat washer and M10 spring washer in outer holes.

Use original bolt previously removed for centre hole in steel mounting bracket.

Align mount and **tighten all bolts.**



BRE22SY

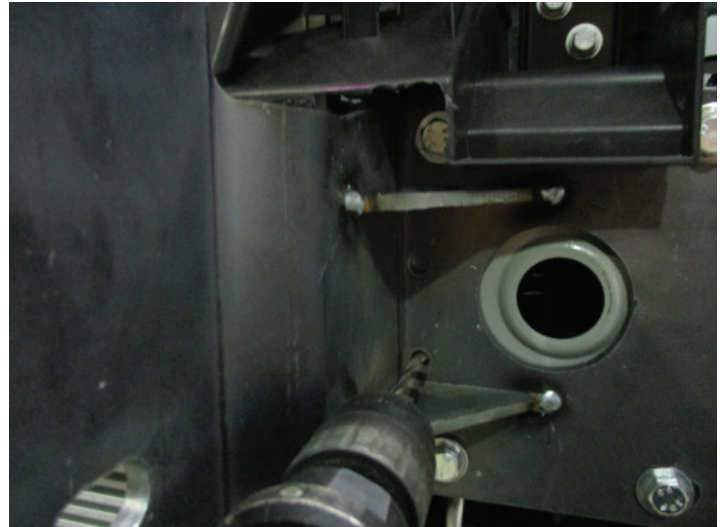
STAGE 10 - MOUNT FITMENT

Using ECB mount as a guide, drill two (2) x 10mm holes through end of chassis rail and gusset (per side).

Blow filing clear and treat all exposed metal with a rust inhibitor.

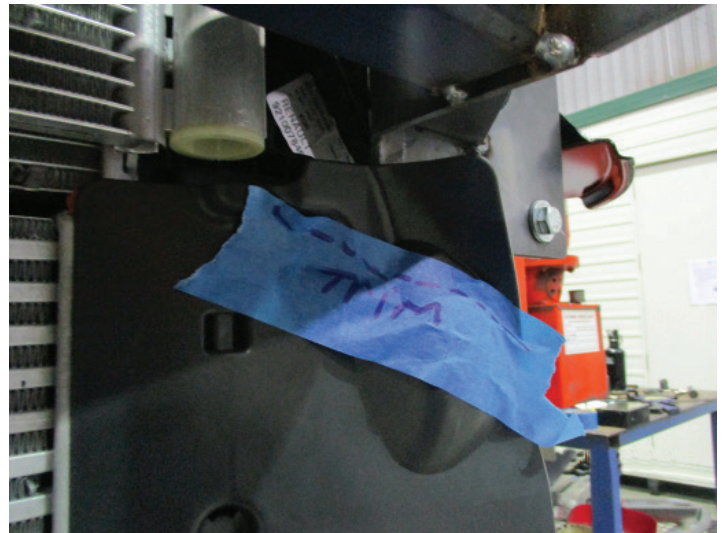
Fit M10 x 1.5 x 35mm bolts, M10 flat washers and M10 x 1.5 nuts.

Tighten all bolts.



STAGE 11 - LOWER DEFLECTORS

Trim lower wind deflectors to fit around steel mounting bracket and refit.



STAGE 12 - WIRING HARNESS

Remove parking sensor harness and sensors from bumper, reconnect to vehicle.



RENAULT MASTER 24 ON

STAGE 13 - LIGHT WIRING

Splice ECB wiring harness into wiring harness behind headlight using cable locks.

Ensure harness is clear of sharp edges and moving parts.

NEED IMAGE?

STAGE 14 - TRIM BUMPER

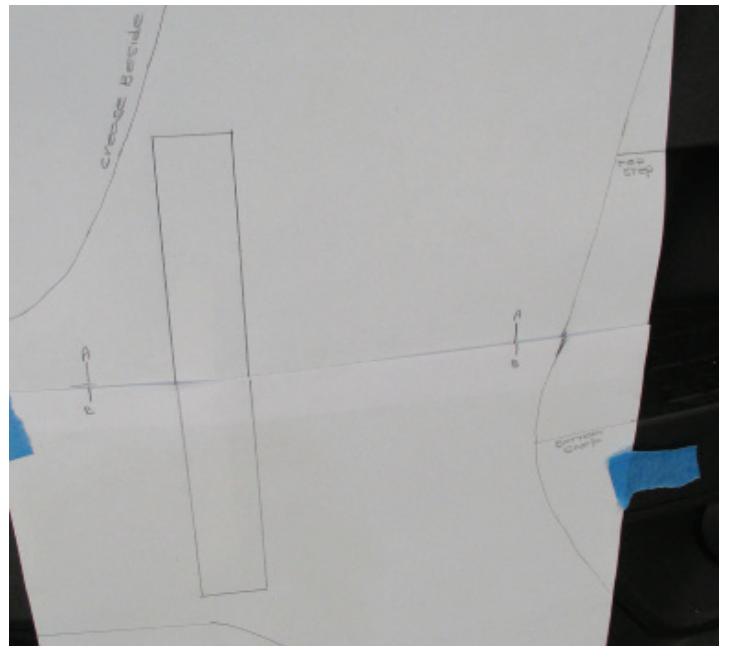
Tape area to be trimmed to avoid any damage to the bumper.

Using the template provided, mark bumper.

Double check by measuring against the steel mounting bracket before cutting.

Cut out with jigsaw or similar tool.

CAUTION: As some photocopiers differ check scale of template before use.



STAGE 15 - REFIT BUMPER

Refit bumper as per reverse of steps 2 to 4.

Feed sonar harness through cut out of bumper.

For fitment to Protection Bar run harness from left to right.

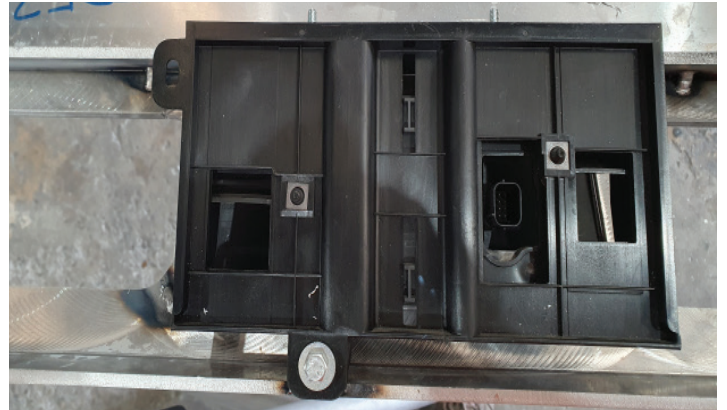
Avoid any sharp edges.



BRE22SY

STAGE 16 - SENSOR /SONAR FITMENT

Fit parking sensors to sensor housings, use zip ties to secure into housing. **Do not over tighten.**



Fit sonar to Protection Bar using M6 x 20mm bolts, M6 flat washers and M6 Nyloc nuts.



STAGE 17 - INDICATOR/ DRL/ PARK LIGHT

Fit ECB LED indicator/ park lights into Protection Bar as per instructions supplied with the LED indicator kit.

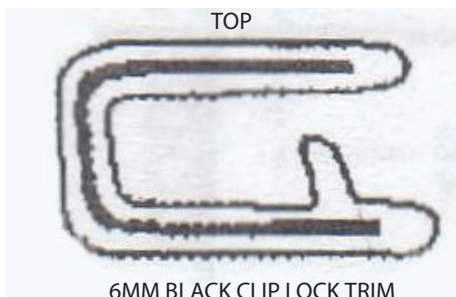
NOTE: Ensure park light is to top.



STAGE 18 - CLIP LOCK

Attach 6mm clip lock trim (supplied) to top of ECB Protection Bar.

NOTE: Trim off lower edge on an angle so trim will sit flush with end of Protection Bar.



RENAULT MASTER 24 ON

STAGE 19 - SONAR COVER

Remove sonar cover from bumper and unclip from inside of bumper.



Fit to Protection Bar, fitting from front and clip into place.



STAGE 20 - FIT PROTECTION BAR

Fit Protection Bar to steel mounting bracket using M12 x 1.75 x 40mm bolts, M12 flat washers, M12 spring washers and M12 x 1.75 nuts .

Align and tighten all bolts.

Ensure tow pin is checked for fitment.



BRE22SY

STAGE 21 - CONNECT ELECTRICS

Connect indicators/ DRL/ park lights and sonar.

Connect parking sensors and secure harness to top of underside of Protection Bar with zip ties.

NOTE: Avoid any sharp objects.



STAGE 22 - CHECK SAFETY FEATURES

Check all safety features are working correctly.

Place Tow Pin in vehicle tool kit and make customer aware of requirement of its use.



FINAL CHECKS

ENSURE NUMBER PLATE IS CLEARLY VISIBLE

Note: When fitting/refitting the licence plate to the vehicle, ensure there is no obstruction to licence plate vision in accordance with local authorities. If required relocate licence plate to an alternate location.

FURTHER VFPS NOTES

1. Do not attach VFPS to the vehicle using anchorages not intended for this purpose (e.g. engine mounting bolts)
2. Do not use this product for any vehicle make or model, other than those specified by the VFPS manufacturer
3. Do not remove the plaque or label from the VFPS
4. Do not modify the structure of the VFPS in any way
5. No accessory or fitment should project forward of the VFPS forward profile

IMPORTANT INFORMATION

Periodically check bolts and nuts for correct tightness, especially if traveling on rough roads.



1800 069 145
WWW.ECB.COM.AU
29 SNOOK ST CLONTARF, QLD 4019

REPLACES: 05.05.21
REVISED: 10.05.24