



**WORLD'S BEST
ALLOY BULLBARS**

East Coast Bullbars (ECB Pty Ltd)

Tel: 07 3897 5700

Fax: 07 3283 1168

ecb@ecb.com.au www.ecb.com.au

29 Snook St
Clontarf QLD 4019
Australia

Po Box 122
Margate QLD 4019
Australia

BM96SY

REPLACES: 08.09.13
REVISED: 09.04.14

FITTING INSTRUCTIONS

MITSUBISHI FG CANTER (04-12on) WIDE, TILT CAB 4x4 BIG TUBE™ PROTECTION BAR 15,000lb AND 16.5 Ti Warn Winch Compatible VEHICLE FRONTAL PROTECTION SYSTEM (VFPS) FOR AIR BAG & ADR COMPLIANT VEHICLES

Check installation hardware before commencing.

Special Requirements:

- Suitable electrical cable and connectors for use on Warn winch to extend to allow fitment of control box to ECB control box mount.
- Caution: Some parts of this instruction will require 2 person lift

1. Remove bumper from vehicle, two 14mm head bolts (per side). **See figure 1.**
2. Remove bumper brackets and tow hook from chassis rail. Two 22mm head bolts and one 14mm bolt (per side). **See figure 2.**
3. Drill out two 11mm hole in top front of chassis rail to 13mm. **Treat all exposed metal with a rust inhibitor. See figure 3.**
4. Measure distance between chassis rails. It has been noted chassis in this vehicle may differ between 840mm and 850mm. This will influence the placement of chassis spacers latter in the fitment.
5. Remove two 22mm head bolts from shipping hooks (per side) on underside of chassis rails. **See figure 4.**
6. Fit fairlead rollers to front of winch mount using bolts from winch kit and four M12 washers (supplied). **Finger tighten only. See figure 5.**
7. 15000Lb winch only: Remove allen head bolts from planetary (gearbox) side of winch. Carefully separate gearbox from winch body and rotate gear handle on winch by one bolt hole to rear of winch. Re-bolt gearbox into place. **See figure 6.**
8. Place winch mount onto high lift jack. Place winch onto mount ensuring winch cable is fitted through fairlead rollers. Bolt winch into position using bolts supplied with winch and two 7/16 bolts, spring washer and flat washers (supplied) for rear holes. **See figure 7.** Lift and bolt winch mount onto chassis where shipping hooks were previously removed using two M14 x 1.5 x 50 bolts, flat washers and spring washers (supplied) (per side) to rear holes and one M12 x 1.75 x 40 bolt, flat washers, spring washers and nut (supplied)(per side) to front holes in underside of chassis rail.. **Finger tighten only.**
9. Note distance between chassis rails previously taken. Should distance be closer to 840mm insert full 4mm steel spacer plate between chassis rail and ECB steel mounting brackets. Should distance be closer to 850mm insert only front winch frame section of 4mm steel spacer plate (break using pliers bending back and forward and **Treat all exposed metal with a rust inhibitor**) between chassis rail and ECB steel mounting brackets. Fit ECB steel mounting brackets (supplied) to chassis rails using four M12 x 1.75 x 40 bolts, flat washer, spring washers and nuts (supplied) for rear holes and two M12 x 1.75 x 50 bolts, flat washer, spring washers and nuts (supplied) for front holes. Install control box mount as fitting front bolts to passengers side. **See figure 8.** With all bolts in and using a level on the front of the steel mounting bracket, lift front of steel mounting bracket on driver's side to level and **TIGHTEN FIRMLY TO CHASSIS.** Position passenger side the same as driver's side. **TIGHTEN ALL BOLTS** drivers and passengers side on chassis only. Tighten underside of chassis rail for winch frame,



**WORLD'S BEST
ALLOY BULLBARS**

East Coast Bullbars (ECB Pty Ltd)

Tel: 07 3897 5700

Fax: 07 3283 1168

ecb@ecb.com.au www.ecb.com.au

29 Snook St
Clontarf QLD 4019
Australia

Po Box 122
Margate QLD 4019
Australia

then front M12 x1.75 x 50 bolts from chassis mounts to winch mount. This will centralise winch mount on vehicle.

10. For 15000 Lb: Disassemble top of control box. Remove mounting bolts from underside of control box and replace with two ¼ x 1 ½ bolts (supplied) and install original equipment nuts. Reassemble control box. Fit control box to control box mount using nuts supplied with winch, four M6 flat washers (supplied) and two 6mm alloy spacer plates. **See figure 9.** Wire winch placing cables through hole in ECB steel mount for direct connection, as per winch instructions.
11. For 16.5 Ti Warn Winch: Assemble control box mount to ECB steel mounting brackets using two M10 x 35 bolts, spring washers and nuts. Using Allen head bolts supplied with winch, 7/16 flat washers, 7/16 spring washers and 7/16 nuts, attach control box to control box mount. Wire winch placing cables through hole in ECB steel mount for direct connection, as per winch instructions.
12. Locate original indicator wiring. For easy access to wiring remove original indicator. Open doors, remove two Phillips head screws, **see figure 10**, and close doors. Slide indicator out towards side of vehicle using a little force, as it may seem a tight fit, **see figure 11**. Splice ECB wiring and 200mm piece single core wire for indicator into original wiring. Use cable locks (supplied). Refit original indicator. Park light wiring is easiest to access from underneath. Remove original park light bulb holder and splice ECB wiring into original. Use cable locks (supplied). Refit bulb.
13. Fit ECB LED indicator / park lights (supplied) into protection bar as per instructions supplied with the LED indicator kit. **NOTE: Ensure park light is to outside. See figure 12.**
14. Fit 6mm clip lock trim (supplied) around winch cut out in protection bar. Place join to bottom of opening. **See figure 13 and 14.**
15. Lift protection bar onto steel mounting brackets. Loosely place eye bolts (supplied) through protection bar. Insert M12 x 1.75 x 65 bolts, nyloc nuts and flat washers (supplied) for hinge holes. **TIGHTEN M12 x 1.75 x 65 bolts FIRM ONLY.** Do not bend plates into steel mounting brackets.
16. Place number plate bracket into position. Check behind bullbar to ensure area is clear and enough room exists for bolts. Mark and drill four 6mm holes into face of bullbar using a 6mm drill bit. Install number plate bracket to bullbar using four M6 x 20 bolts, flat washers and nyloc nuts.
17. Connect ECB indicator / park light wiring.
18. Remove eyebolts and carefully tilt protection bar to check clearances. Check indicator / park light wiring for tilt. Tilt cab and check all clearances.
19. Lock cab back into position. Lift protection bar and **TIGHTEN** eyebolts firmly. Check protection bar alignment with cab. Readjust steel mounting brackets on chassis if necessary. **See figure 15 and 16.**
20. Check indicator / park lights for correct operation.
21. Attach tilt-warning sticker (supplied) near cab tilt lever.



**WORLD'S BEST
ALLOY BULLBARS**

East Coast Bullbars (ECB Pty Ltd)

Tel: 07 3897 5700

Fax: 07 3283 1168

ecb@ecb.com.au www.ecb.com.au

29 Snook St
Clontarf QLD 4019
Australia

Po Box 122
Margate QLD 4019
Australia

ENSURE NUMBER PLATE IS CLEARLY VISABLE

Note: When fitting/refitting the licence plate to the vehicle, ensure there is no obstruction to licence plate vision in accordance with local authorities. If required relocate licence plate to an alternate location.

Further VFPS Notes:

- Do not attach VFPS to the vehicle using anchorages not intended for this purpose (e.g. engine mounting bolts).
- Do not use this product for any vehicle make or model, other than those specified by the VFPS manufacturer.
- Do not remove the plaque or label from the VFPS.
- Do not modify the structure of the VFPS in any way.
- No accessory or fitment should project forward of the VFPS forward profile.
- ENSURE THESE INSTRUCTIONS ARE LEFT WITH VEHICLE OWNER AND/OR OPERATOR.**

IMPORTANT INFORMATION

Periodically check bolts and nuts for correct tightness, especially if travelling on rough roads

FITTING KIT

1 – Pair Steel mounting brackets.	4 – 7/16 flat washers
1 – Steel winch mount bracket	4 – 7/16 spring washers
1 – 16.5 Ti Steel winch control box mount	2 – 7/16 nuts
1 – 15000Lb Steel winch control box mount	2 – M10 x 1.5 x 35 bolts
2 – 4mm steel spacer plate (BM96SY_B4MS)	4 – M10 flat washers
2 – 6mm alloy control box spacer plate (AWMH04_05_6)	2 – M10 spring washers
1 – Number plate hinge assembly	2 – M10 x 1.5 nuts
4 – M14 x 1.5 x 50 bolts	2 – ¼ x 1 ½ bolts
4 – M12 flat washers	4 – M6 flat washers
4 – 9/16 spring washers	2 – ¾ eyebolts.
10 – M12 x 1.75 x 40 bolts	2 – ¾ Nylon washers.
4 – M12 x 1.75 x 50 bolts	1 – ECB LED Indicator / Park light kit
2 – M12 x 1.75 x 65 bolts	1 – 400mm length 1 core wire.
36 – M12 flat washers	2 – Butt splice connectors
16 – M12 spring washers	6 – Cable locks.
16 – M12 x 1.75 nuts	1 – 1100mm lengths 6mm clip lock trim
2 – 7/16 x 1 ½ bolts	1 – Tilt-warning sticker.

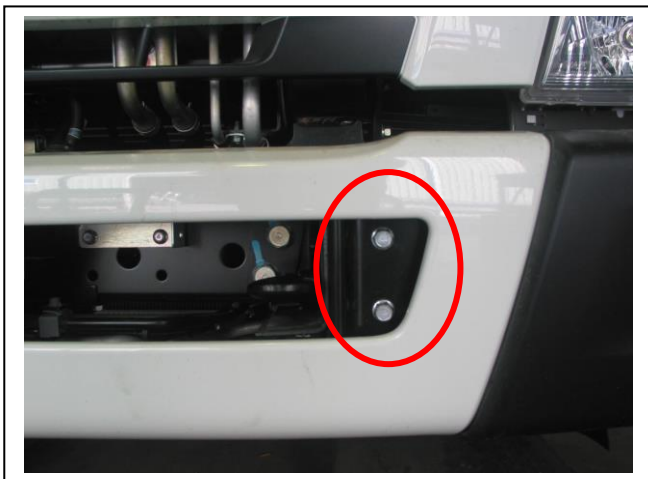


Figure 1 – Bolts that hold bumper on

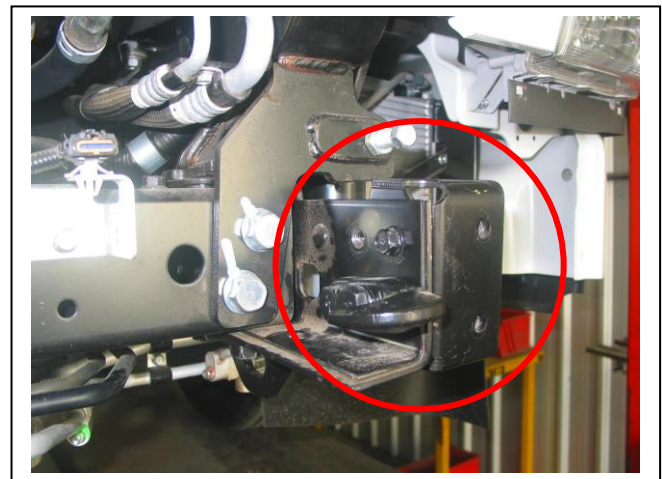


Figure 2 – Grind off remaining weld. Drivers side shown



**WORLD'S BEST
ALLOY BULLBARS**

East Coast Bullbars (ECB Pty Ltd)

Tel: 07 3897 5700

Fax: 07 3283 1168

ecb@ecb.com.au www.ecb.com.au

29 Snook St
Clontarf QLD 4019
Australia

Po Box 122
Margate QLD 4019
Australia

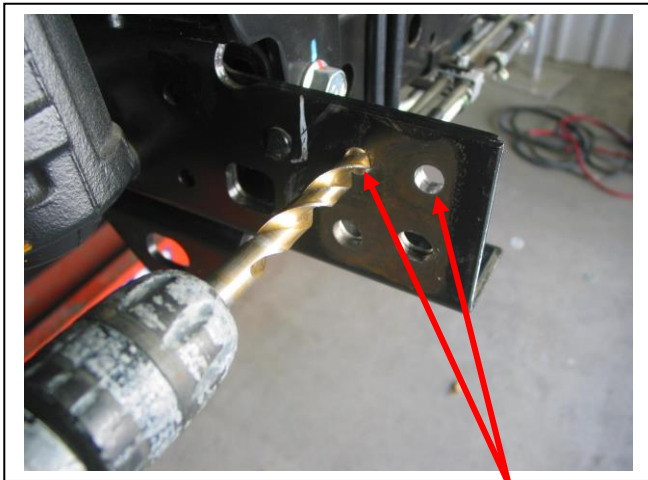


Figure 3 – Drivers side shown Drill two 13mm holes top of chassis,
Drivers and passengers side

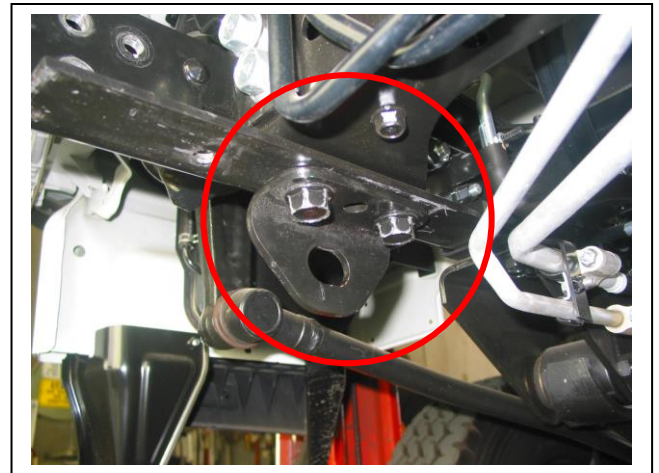


Figure 4



Figure 5 – Assembled winch frame



Figure 6 - 15000Lb winch only.



Figure 7 – Winch frame viewed from rear
Caution: 2 person lift in this state.



Figure 8



**WORLD'S BEST
ALLOY BULLBARS**

East Coast Bullbars (ECB Pty Ltd)

Tel: 07 3897 5700

Fax: 07 3283 1168

ecb@ecb.com.au www.ecb.com.au

29 Snook St
Clontarf QLD 4019
Australia

Po Box 122
Margate QLD 4019
Australia

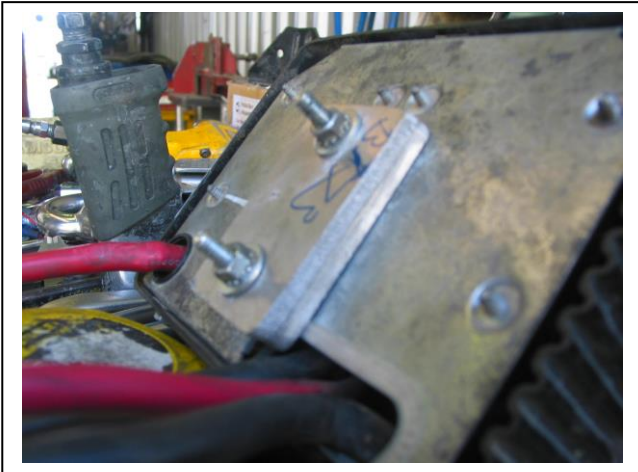


Figure 9

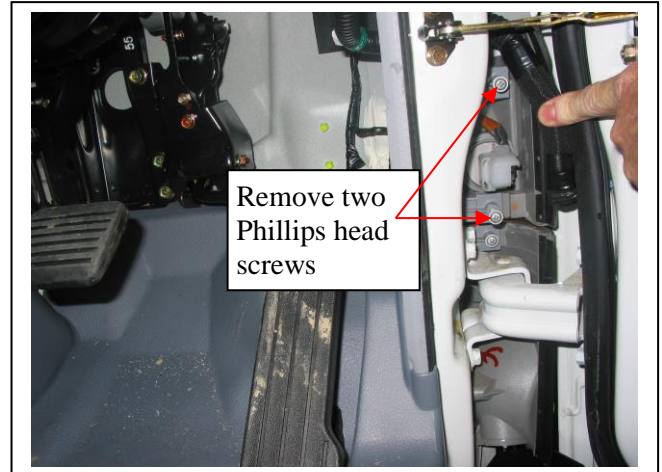


Figure 10 – Driver's side shown



Figure 11 – Push outwards

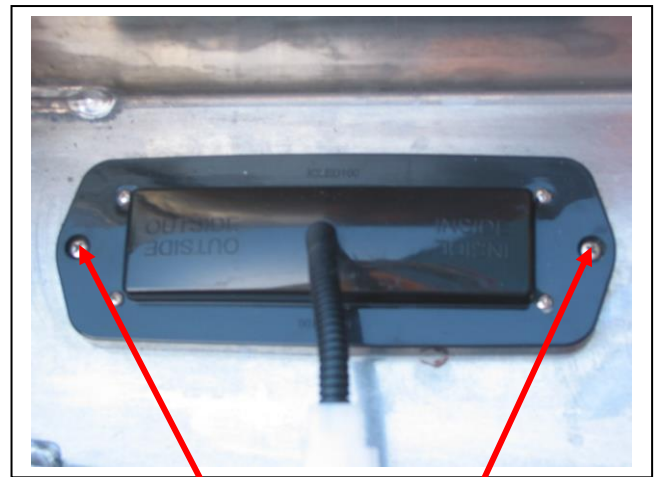


Figure 12
Stainless steel self-tappers

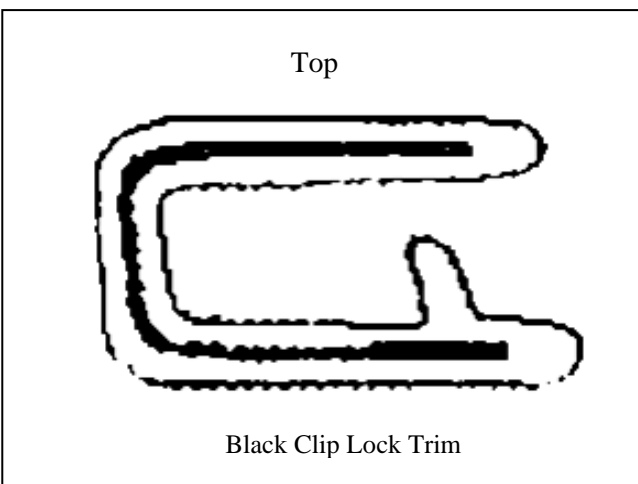


Figure 13



Figure 14



**WORLD'S BEST
ALLOY BULLBARS**

East Coast Bullbars (ECB Pty Ltd)

Tel: 07 3897 5700

Fax: 07 3283 1168

ecb@ecb.com.au www.ecb.com.au

29 Snook St
Clontarf QLD 4019
Australia

Po Box 122
Margate QLD 4019
Australia



Figure 15 – Front view shown



Figure 16 – Side view shown



**WORLD'S BEST
ALLOY BULLBARS**

East Coast Bullbars (ECB Pty Ltd)

Tel: 07 3897 5700

Fax: 07 3283 1168

ecb@ecb.com.au www.ecb.com.au

29 Snook St
Clontarf QLD 4019
Australia

Po Box 122
Margate QLD 4019
Australia

We value your comments

Dear Fitter,

ECB would like to know how you went with the installation of this product. We value your comment and may need to contact you to clarify some details so please complete your contact details clearly.

We would appreciate if you could complete as many of the following details as possible.

Your Name:	Your contact No.
Product Part No.	Product Invoice No.
Product Description:	Make, model, and year of vehicle:
Product Work Order No.	Company your from/Company product purchased from:

Date of Fitment: ___/___/___

Was the fitting hardware supplied complete? Yes No

If no what was not supplied

Did the installation go well? Yes No

Please provide comments

Please draw diagrams if you need to.

Post to
Reply Paid 122
PO Box 122
Margate QLD 4019

Fax to
(07) 3283 1168



**WORLD'S BEST
ALLOY BULLBARS**

East Coast Bullbars (ECB Pty Ltd)

Tel: 07 3897 5700

Fax: 07 3283 1168

ecb@ecb.com.au www.ecb.com.au

29 Snook St
Clontarf QLD 4019
Australia

Po Box 122
Margate QLD 4019
Australia



WORLD'S BEST ALLOY BULLBARS

East Coast Bullbars (ECB Pty Ltd)

Tel: 07 3897 5700

Fax: 07 3283 1168

ecb@ecb.com.au www.ecb.com.au

29 Snook St
Clontarf QLD 4019
Australia

Po Box 122
Margate QLD 4019
Australia

DESPATCH CHECKLIST BM96SY

ICZBKCM96

* I CZBKCM96*

Work Order #	
Finish:	
Transport:	
Due Date:	

OC.....1 – Pair Steel mounting brackets.

OC.....1 – Steel winch mount bracket

OC.....1 – steel winch control bracket (BM96SY_A4MS)

OC.....2 – 4mm Steel spacer plate (BM96SY_B4MS)

BK.....1 – 6mm Steel winch control bracket (BM96SY_A6MS)

BK.....2 – 6mm alloy spacer plate (AWMH04_05_6)

BK.....1 – Number plate hinge assembly

(NUMBER PLATE HINGE PLATE A, NUMBER PLATE HINGE C 40_A3AL, assembled)

BK.....1 – Bolt kit.

BK.....2 – ¾ Eye Bolts.

BK.....1 – ECB LED Indicator / Park light kit.

BK.....1 – 400mm length 1 core wire.

BK.....1 – 1100mm lengths 6mm clip lock trim.

OC.....2 – ECB overrides – **Fitted to Bar**



Is this product “the best it can be” Yes _____/_____

Wrapper's initials / Checker initials

If NO fix before continuing

All parts checked and completed by:

Nut and bolts: _____ Date __/__/__

Order control: _____ Date __/__/__

Final wrap check: _____ Date __/__/__



**WORLD'S BEST
ALLOY BULLBARS**

East Coast Bullbars (ECB Pty Ltd)

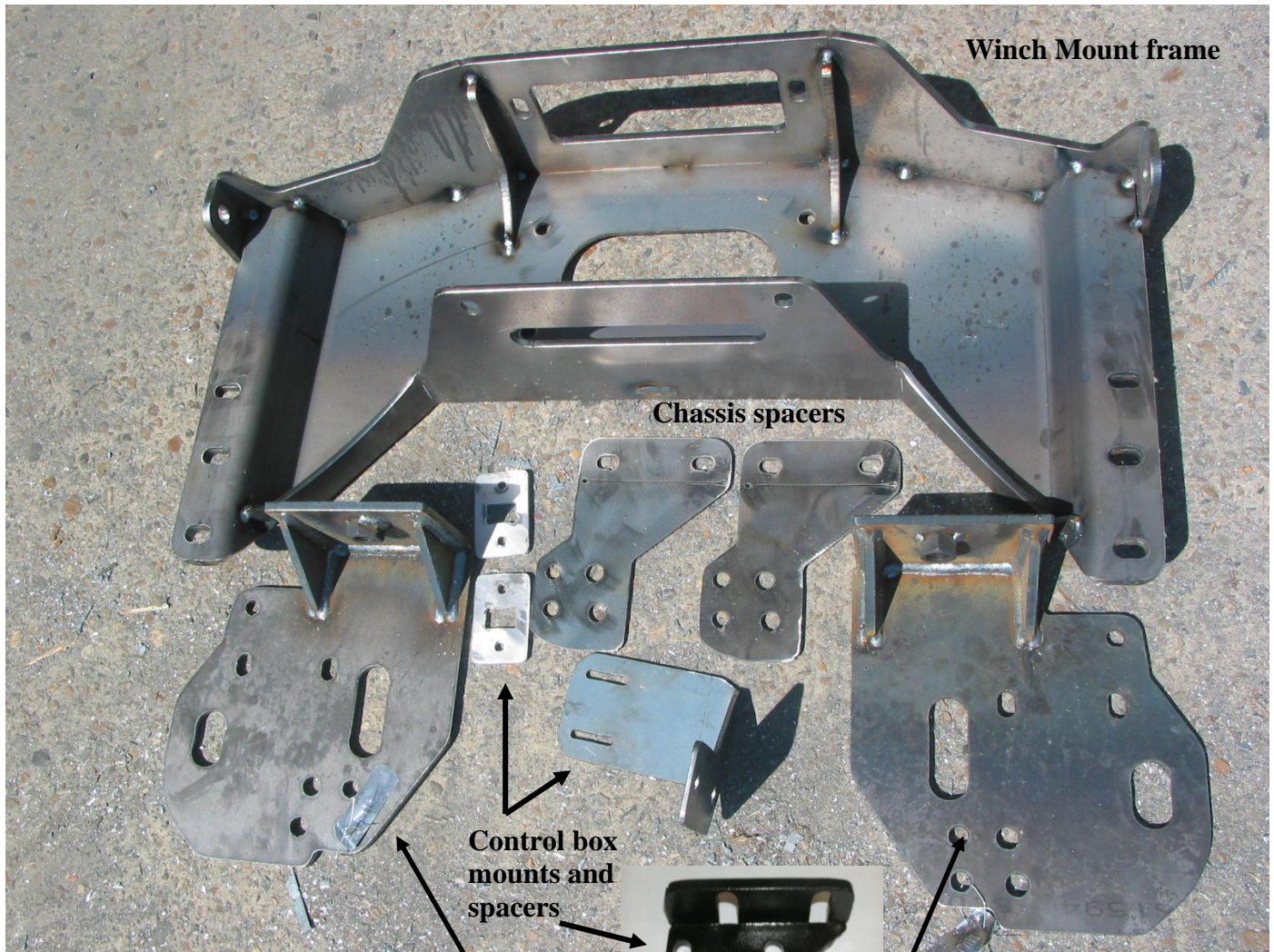
Tel: 07 3897 5700

Fax: 07 3283 1168

ecb@ecb.com.au www.ecb.com.au

29 Snook St
Clontarf QLD 4019
Australia

Po Box 122
Margate QLD 4019
Australia

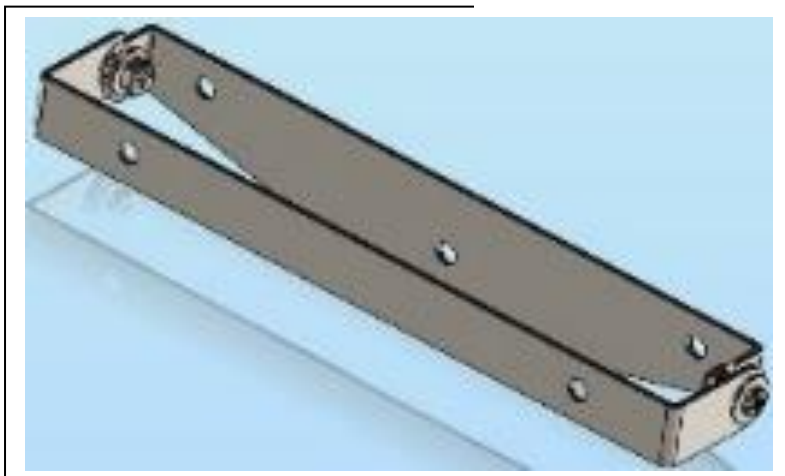


Winch Mount frame

Chassis spacers

**Control box
mounts and
spacers**

Passengers and drivers chassis mounts
(1 pair steel mounting brackets)



Number Plate mount assembly

Number plate hinge plate A

Number plate hinge C 40_A3Al