



INSTALLATION GUIDE

FIAT DUCATO 2025 ON

PN: BFI08SY



BULLBAR WITH BUMPER LIGHTS

VEHICLE FRONTAL PROTECTION SYSTEM (VFPS)
FOR AIR BAG & ADR COMPLIANT VEHICLES

INDEX

PAGE 3

Installation Kit

PAGE 4

Stage 1 - Vehicle Testing And Preparation

Stage 2 - Bonnet Latch Placement

Stage 3 - Headlight Removal

PAGE 5

Stage 4 - Grille Removal

Stage 5 - Grille Removal

Stage 6 - Lower Grille Removal

PAGE 6

Stage 7 - Lower Grille Removal

Stage 8 - Inner Guard

Stage 9 - Lower Bumper

PAGE 7

Stage 10 - Remove Bumper

Stage 11 - Remove Bumper Support

PAGE 8

Stage 12 - Radiator Shroud Trim

Stage 13 - ECB Mount Fitment

Stage 14 - Side Bumper Section Trim

PAGE 9

Stage 15 - Remove Sonar

Stage 16 - Trim Lower Grille

Stage 17 - Install Sonar

PAGE 10

Stage 18 - Clip Lock Trim

Stage 19 - Install Fog Lights

Stage 20 - Protection Bar Install

PAGE 11

Stage 21 - Reconnect Sonar

Stage 22 - Underbody Fitment

Stage 23 - Safety Feature Checks

PAGE 12

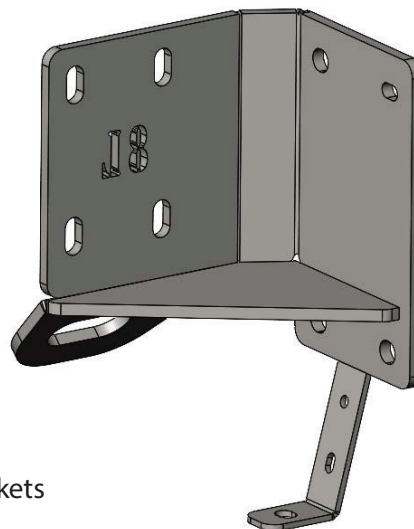
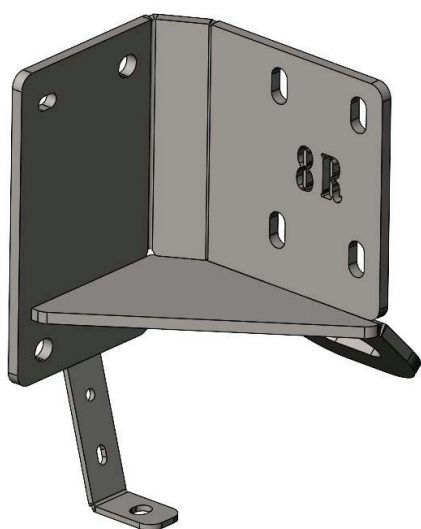
Stage 23 - Tow Hooks

PAGE 13

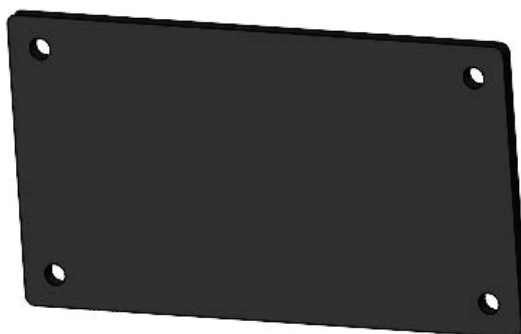
Final Checks

INSTALLATION KIT

1 - Pair Steel Mounts	2 - M6 Spring Washers
8 - M12 x 1.75 x 40mm Bolts	16 - M6 Flat Washers
16 - M12 Flat Washers	7 - M6 Nyloc Nuts
8 - M12 Spring Washers	2 - M6 Nuts
8 - M12 x 1.75 Nuts	1 - Bumper Light Kit
6 - M10 x 1.25 X 35mm Bolts	4 - Bumper Light Surrounds
6 - M10 Flat Washers	1 - Bumper Light Wiring Harness (IC10D40S1004ECBH)
6 - M10 Spring washers	1 - 2400mm Length 6mm Clip Lock Trim
4 - M6 Black Button Hex Head Screws	1 - Plastic Sensor Cover (EAM166_SC3PL)
5 - M6 x 20mm Bolts	10 - 300mm Zip Ties



Steel Mounting Brackets



Plastic Sensor Cover

FIAT DUCATO 2025 ON

STAGE 1 - VEHICLE PREPARATION

Test drive vehicle to ensure all driver assists are correctly working and to gauge effectiveness.

Park on a flat level surface.

Apply parking brake and lift bonnet.

DISCONNECT BATTERY

Unwrap ECB Protection Bar and disconnect mounts.
Discard bolts.

Ensure these instructions are left with the vehicle owner and/or operator.



STAGE 2 - BONNET LATCH PLACEMENT

Bonnet latch handle is situated on passengers' side at end of dash in door opening.

Lift bonnet.



STAGE 3 - HEADLIGHT REMOVAL

Remove head lights two (2) T30 torx screws, one lower at grille support, top one below window screen.

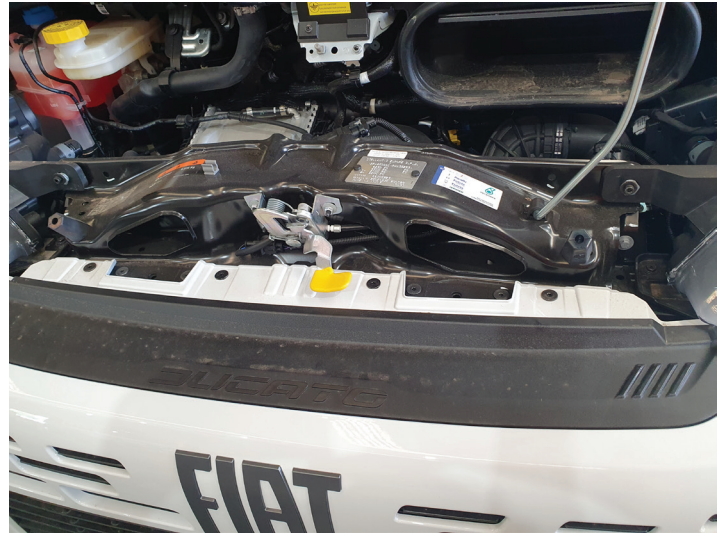
Disconnect headlight wiring from the rear of light.

Slide light forward to remove.



STAGE 4 - GRILLE REMOVAL

Top of grille remove fourteen (14) T30 torx screws, front of grille two (2) plastic T30 torx head screws.



STAGE 5 - GRILLE REMOVAL

Gently lift grille to remove taking care to lift vertically from plastic retaining clips.

CAUTION: Forward sliding of grille, will break clips.



STAGE 6 - LOWER GRILLE REMOVAL

Remove two (2) T30 torx screws on top of outer bumper per side and two (2) T30 torx screws upper top of grille support rail.



FIAT DUCATO 2025 ON

STAGE 7 - LOWER GRILLE REMOVAL

On lower grille opening, gently remove plastic cover and one (1) T30 torx screw per side.



STAGE 8 - INNER GUARD

To remove inner wheel arch, remove four (4) Phillips head screws per side. Pull inner guard away from vehicle.

At guard/ bumper join on inside of guard, remove one (1) T30 torx screw.



STAGE 9 - LOWER BUMPER

From under side remove four (4) T30 torx screws.

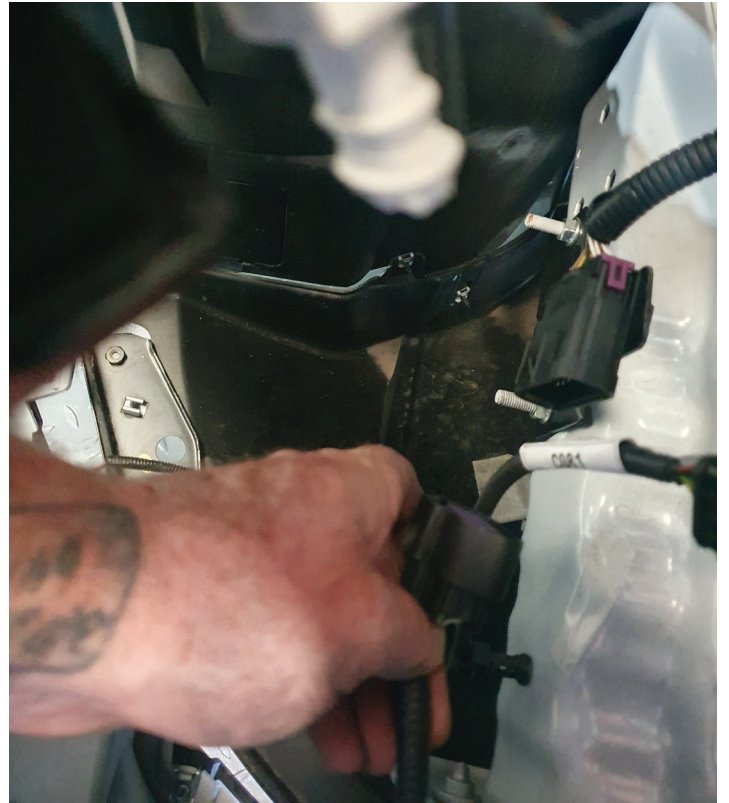


STAGE 10 - DISCONNECT FOG LIGHTS

Gently pull outer guard away from vehicle.



Disconnect fog lights and sensor harness on passenger side. Disconnect sonar harness.



STAGE 11 - REMOVE BUMPER SUPPORT

From bumper support, remove two (2) 13mm head bolts from underside front of plastic undertray, three (3) 15mm head bolts per side on front of chassis and one (1) 15mm nut at top outer corner.

Twist bumper support forward and down to remove.

Retain nuts for refitment.



FIAT DUCATO 2025 ON

STAGE 12 - RADIATOR SHROUD TRIM

Whilst holding steel mount in position on chassis, mark radiator shrouds for trim.

Trim outer radiator shroud to suit mounts.



STAGE 13 - ECB MOUNT FITMENT

Fit ECB steel mounting brackets to vehicle with lower tab to underside of lower bumper support and tow hooks to inside of vehicle.

Attach using original 15mm head nut, three (3) M10 x 1.25 x 35mm bolts, spring washer and flat washer and original 13mm head bolt for lower support mount.

Align steel mounting brackets using outside measurement of alloy mounts on ECB Protection Bar to inner measurement of ECB mounting brackets as a guide.

Centralize steel mounting brackets to vehicle and tighten all bolts.



STAGE 14 - SIDE BUMPER SECTION TRIM

Mask edges of outer bumper sections. Mark bumper on the inside using mount as a guide.

Trim inside edge of outer bumper sections using a jigsaw or similar, to allow access for Protection Bar mounting brackets to protrude through to meet steel mount.

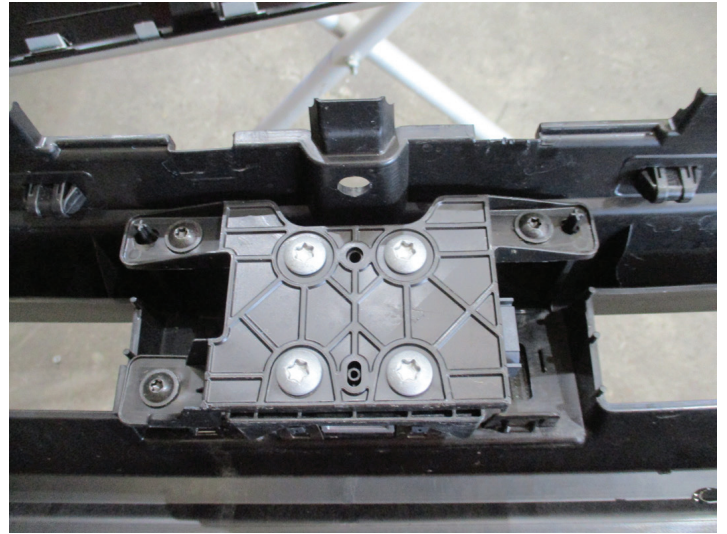
NOTE: Retain as much of the lower bumper mount as possible as this retains the lower section of the bumper.

Refit bumper as per steps 8 to 10 in reverse.



STAGE 15 - REMOVE SONAR

Remove sonar from rear of grille. Three (3) T20 torx screws.



STAGE 16 - TRIM LOWER GRILLE

Using a Jigsaw or similar, remove lower section of plastic bumper centre in line with bottom of sonar cover, retaining lower mounting holes. Trim outer corners to suit mounts.

Refit grille and headlights as per reverse of steps 3 to 7.

NOTE: Lower grille is not replaced. Please ensure torx screw is refitted.

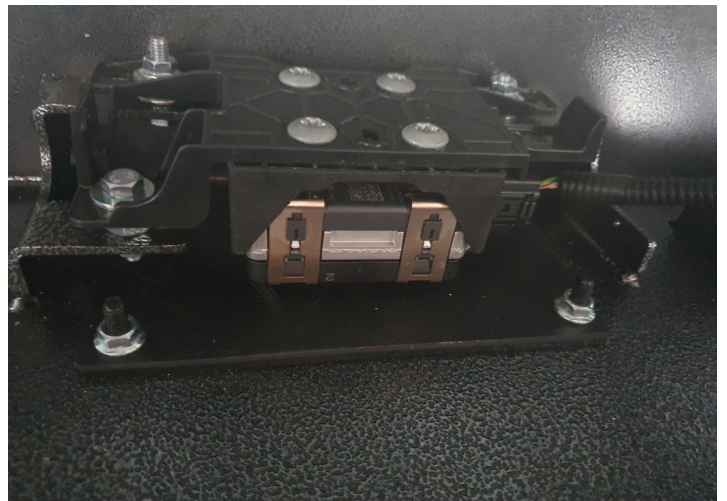


STAGE 17 - INSTALL SONAR

Fit plastic sonar cover to inside front of Protection Bar using four (4) M6 black Allen head screws flat washers and nyloc nuts.

Install sonar to rear of protection bar. Place two (2) flat washers between the alloy mount and the sonar unit, then attach the sonar unit using three M6 x 20 bolts, flat washers and nyloc nuts.

CAUTION: The front of the sonar unit should not touch the plastic cover.

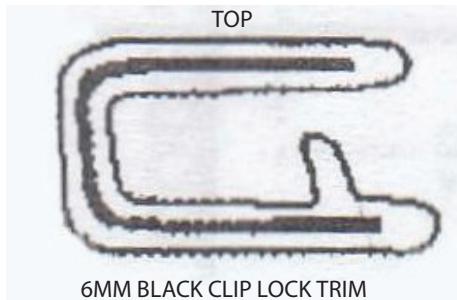


FIAT DUCATO 2025 ON

STAGE 18 - CLIP LOCK TRIM

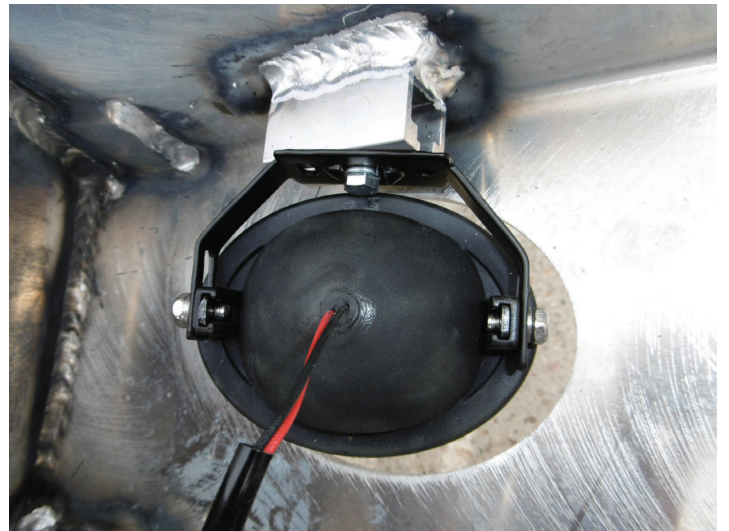
Attach 6mm clip lock trim (supplied) to top of ECB Protection Bar.

NOTE: Trim off lower edge on an angle so trim will sit flush with end of Protection Bar.



STAGE 19 - INSTALL FOG LIGHTS

Attach ECB fog lights to Protection Bar. Place M6 x 20 bolts, spring washers (supplied) through light mount from inside and attach nut to top. Slide assembly into light mount in Protection bar and centralize light to hole. **TIGHTEN FIRM ONLY.**



STAGE 20 - PROTECTION BAR INSTALL

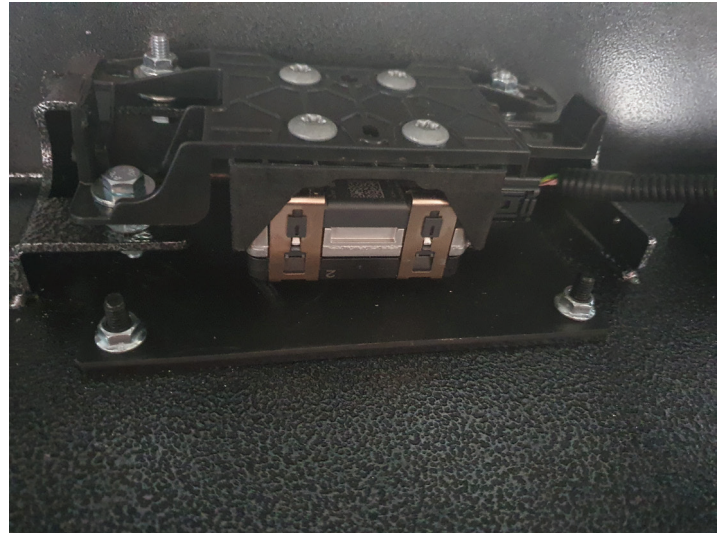
Fit Protection Bar to steel mounting brackets using M12 x 1.75 x 40mm bolts, flat washers, spring washers and nuts.

Align Protection Bar with vehicle.

Tighten all bolts.

STAGE 21 - RECONNECT SONAR

Reconnect sonar, zip tie harness to body avoiding any sharp objects.



STAGE 22 - UNDERBODY FITMENT

Refit underbody guard to vehicle with original screws.

Do not overtighten as this will strip retaining logs in support.



STAGE 23 - SAFETY FEATURE CHECKS

Test all safety features are working correctly.

FIAT DUCATO 2025 ON

STAGE 23 - TOW HOOKS

ENSURE VEHICLE OWNER / OPERATOR IS AWARE OF THE BELOW.

Towing points are provided on steel mount. These are designed to be paired and used together for straight line towing.

FAILURE TO USE BOTH TOW HOOKS WHEN TOWING MAY RESULT IN DAMAGE TO BOTH VEHICLE AND ECB PROTECTION BAR.



Old Model Shown

FINAL CHECKS

ENSURE NUMBER PLATE IS CLEARLY VISIBLE

NOTE: When fitting/refitting the licence plate to the vehicle, ensure there is no obstruction to licence plate vision in accordance with local authorities. If required relocate licence plate to an alternate location.

FURTHER VFPS NOTES

1. Do not attach VFPS to the vehicle using anchorages not intended for this purpose (e.g. engine mounting bolts)
2. Do not use this product for any vehicle make or model, other than those specified by the VFPS manufacturer
3. Do not remove the plaque or label from the VFPS
4. Do not modify the structure of the VFPS in any way
5. No accessory or fitment should project forward of the VFPS forward profile

IMPORTANT INFORMATION

Periodically check bolts and nuts for correct tightness, especially if traveling on rough roads.



1800 069 145
WWW.ECB.COM.AU
29 SNOOK ST CLONTARF, QLD 4019

REPLACES: N/A
REVISED: 26.03.25