



**Lighter
Stronger
Better!**

A: 29 Snook St Clontarf QLD 4019
A: PO Box 122 Margate QLD 4019
P: 07 3897 5700
F: 07 3811 6480
E: info@ecb.com.au
W: ecb.com.au
W: customalloy.com.au



BAVM96SY

REPLACES: 00.00.00
REVISED: 29.09.21

FITTING INSTRUCTIONS

mitsubishi FG CANTER (04-12on) WIDE, TILT CAB 4x4 BIG TUBE™ PROTECTION BAR 15,000lb AND 16.5 Ti Warn Winch Compatible VEHICLE FRONTAL PROTECTION SYSTEM (VFPS) FOR AIR BAG & ADR COMPLIANT VEHICLES

Ensure these instructions are left with the vehicle owner and/or operator.

Check installation hardware before commencing.

Special Requirements:

- Suitable electrical cable and connectors for use on Warn winch to extend to allow fitment of control box to ECB control box mount.
- Caution: Some parts of this instruction will require 2-person lift

1. Remove bumper from vehicle, two 14mm head bolts (per side). **See figure 1.**
2. Remove bumper brackets and tow hook from chassis rail. Two 22mm head bolts and one 14mm bolt (per side). **See figure 2.**
3. Drill out two 11mm hole in top front of chassis rail to 13mm. **Treat all exposed metal with a rust inhibitor. See figure 3.**
4. Measure distance between chassis rails. It has been noted chassis in this vehicle may differ between 840mm and 850mm. This will influence the placement of chassis spacers latter in the fitment.
5. Remove two 22mm head bolts from shipping hooks (per side) on underside of chassis rails. **See figure 4.**
6. Fit fairlead rollers to front of winch mount using bolts from winch kit and four M12 washers (supplied). **Finger tighten only. See figure 5.**
7. 15000Lb winch only: Remove Allen head bolts from planetary (gearbox) side of winch. Carefully separate gearbox from winch body and rotate gear handle on winch by one bolt hole to rear of winch. Re-bolt gearbox into place. **See figure 6.**
8. Place winch mount onto high lift jack. Place winch onto mount ensuring winch cable is fitted through fairlead rollers. Bolt winch into position using bolts supplied with winch and two 7/16 bolts, spring washer and flat washers (supplied) for rear holes. **See figure 7.** Lift and bolt winch mount onto chassis where shipping hooks were previously removed using two M14 x 1.5 x 50 bolts, flat washers and spring washers (supplied) (per side) to rear holes and one M12 x 1.75 x 40 bolt, flat washers, spring washers and nut (supplied)(per side) to front holes in underside of chassis rail.. **Finger tighten only.**
9. Note distance between chassis rails previously taken. Should distance be closer to 840mm insert full 4mm steel spacer plate between chassis rail and ECB steel mounting brackets. Should distance be closer to 850mm insert only front winch frame section of 4mm steel spacer plate (break using pliers bending back and forward and **Treat all exposed metal with a rust inhibitor**) between chassis rail and ECB steel mounting brackets. Fit ECB steel mounting brackets (supplied) to chassis rails using four M12 x 1.75 x 40 bolts, flat washer, spring washers and nuts (supplied) for rear holes and two M12 x 1.75 x 50 bolts, flat washer, spring washers and nuts (supplied) for front holes. Install control box mount as fitting front bolts to passenger side. **See figure 8.** With all bolts in and using a level on the front of the steel mounting bracket, lift front of steel mounting bracket on driver's side to



**Lighter
Stronger
Better!**

A: 29 Snook St Clontarf QLD 4019
A: PO Box 122 Margate QLD 4019
P: 07 3897 5700
F: 07 3811 6480
E: info@ecb.com.au
W: ecb.com.au
W: customalloy.com.au



level and **TIGHTEN FIRMLY TO CHASSIS**. Position passenger side the same as driver's side. **TIGHTEN ALL BOLTS** driver and passenger side on chassis only. Tighten underside of chassis rail for winch frame, then front M12 x 1.75 x 50 bolts from chassis mounts to winch mount. This will centralise winch mount on vehicle.

10. For 15000 Lb: Disassemble top of control box. Remove mounting bolts from underside of control box and replace with two ¼ x 1 ½ bolts (supplied) and install original equipment nuts. Reassemble control box. Fit control box to control box mount using nuts supplied with winch, four M6 flat washers (supplied) and two 6mm alloy spacer plates. **See figure 9**. Wire winch placing cables through hole in ECB steel mount for direct connection, as per winch instructions.
11. For 16.5 Ti Warn Winch: Assemble control box mount to ECB steel mounting brackets using two M10 x 35 bolts, spring washers and nuts. Using Allen head bolts supplied with winch, 7/16 flat washers, 7/16 spring washers and 7/16 nuts, attach control box to control box mount. Wire winch placing cables through hole in ECB steel mount for direct connection, as per winch instructions.
12. Locate original indicator wiring. For easy access to wiring remove original indicator. Open doors, remove two Phillips head screws, **see figure 10**, and close doors. Slide indicator out towards side of vehicle using a little force, as it may seem a tight fit, **see figure 11**. Splice ECB wiring and 200mm piece single core wire for indicator into original wiring. Use cable locks (supplied). Refit original indicator. Park light wiring is easiest to access from underneath. Remove original park light bulb holder and splice ECB wiring into original. Use cable locks (supplied). Refit bulb.
13. Fit ECB LED indicator / park lights (supplied) into protection bar as per instructions supplied with the LED indicator kit. **NOTE: Ensure park light is to outside. See figure 12.**
14. Remove black retaining clip from ball of accessory light. Place ball fixings on light through hole in 2mm alloy headlight mount. Refit black ball mounts. Using six M6 x 20 bolts, flat washers and Nyloc nuts, install light and light mounts. Install light mount to rear of protection bar using four M6 x 25 bolts, flat washers and Nyloc nuts. **NOTE: Place bolts loosely into light mount with bolt to front, then feed into welded mounts on protection bar. Centralise lights and tighten all bolts. Wire lights as per required.**
15. Fit 6mm clip lock trim (supplied) around winch cut out in protection bar. Place join to bottom of opening. **See figure 13 and 14.**
16. Lift protection bar onto steel mounting brackets. Loosely place eye bolts (supplied) through protection bar. Insert M12 x 1.75 x 65 bolts, Nyloc nuts and flat washers (supplied) for hinge holes. **TIGHTEN M12 x 1.75 x 65 bolts FIRM ONLY.** Do not bend plates into steel mounting brackets.
17. Place number plate bracket into position. Check behind bullbar to ensure area is clear and enough room exists for bolts. Mark and drill four 6mm holes into face of bullbar using a 6mm drill bit. Install number plate bracket to bullbar using four M6 x 20 bolts, flat washers and Nyloc nuts.
18. Connect ECB indicator / park light wiring.
19. Remove eyebolts and carefully tilt protection bar to check clearances. Check indicator / park light wiring for tilt. Tilt cab and check all clearances.
20. Lock cab back into position. Lift protection bar and **TIGHTEN** eyebolts firmly. Check protection bar alignment with cab. Readjust steel mounting brackets on chassis if necessary. **See figure 15 and 16.**
21. Check indicator / park lights for correct operation. Adjust lights for driving conditions.
22. Attach tilt-waring sticker (supplied) near cab tilt lever.

ENSURE NUMBER PLATE IS CLEARLY VISABLE

Note: When fitting/refitting the licence plate to the vehicle, ensure there is no obstruction to licence plate vision in accordance with local authorities. If required relocate licence plate to an alternate location.

Further VFPS Notes:

- Do not attach VFPS to the vehicle using anchorages not intended for this purpose (e.g. engine mounting bolts).
- Do not use this product for any vehicle make or model, other than those specified by the VFPS manufacturer.
- Do not remove the plaque or label from the VFPS.
- Do not modify the structure of the VFPS in any way.
- No accessory or fitment should project forward of the VFPS forward profile.
- ENSURE THESE INSTRUCTIONS ARE LEFT WITH VEHICLE OWNER AND/OR OPERATOR.**

IMPORTANT INFORMATION

Periodically check bolts and nuts for correct tightness, especially if travelling on rough roads

FITTING KIT

1 – Pair Steel mounting brackets.	4 – 7/16 spring washers
1 – Steel winch mount bracket	2 – 7/16 nuts
1 – 16.5 Ti Steel winch control box mount	2 – M10 x 1.5 x 35 bolts
1 – 15000Lb Steel winch control box mount	4 – M10 flat washers
1 – Alloy control box mount (B3IS4458_C6A)	2 – M10 spring washers
2 – 4mm steel spacer plate (BM96SY_B4MS)	2 – M10 x 1.5 nuts
2 – 6mm alloy control box spacer plate (AWMH04_05_6)	8 – M6 x 25 bolts
1 – Number plate hinge assembly	14 – M6 x 20 bolts
4 – M14 x 1.5 x 50 bolts	2 – ¼ x 1 ½ bolts
4 – M12 flat washers	26 – M6 flat washers
4 – 9/16 spring washers	22 – M6 nyloc nuts
10 – M12 x 1.75 x 40 bolts	2 – ¾ eyebolts.
4 – M12 x 1.75 x 50 bolts	2 – ¾ Nylon washers.
2 – M12 x 1.75 x 65 bolts	1 – ECB LED Indicator / Park light kit
36 – M12 flat washers	1 – 400mm length 1 core wire.
16 – M12 spring washers	2 – Butt splice connectors
16 – M12 x 1.75 nuts	6 – Cable locks.
2 – 7/16 x 1 ½ bolts	1 – 1100mm lengths 6mm clip lock trim
4 – 7/16 flat washers	1 – Tilt-warning sticker.

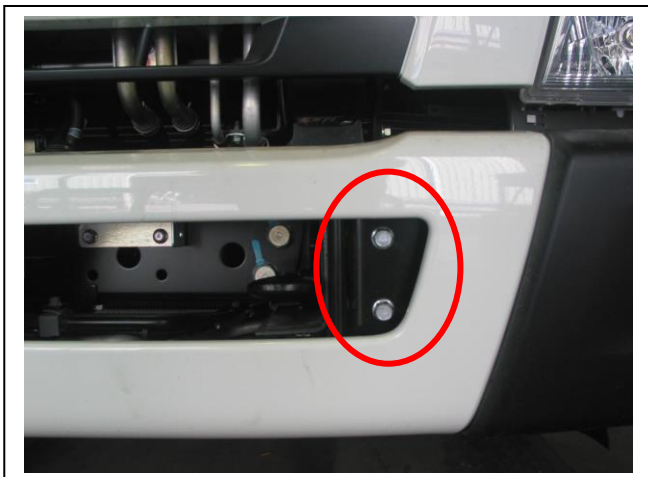


Figure 1 – Bolts that hold bumper on

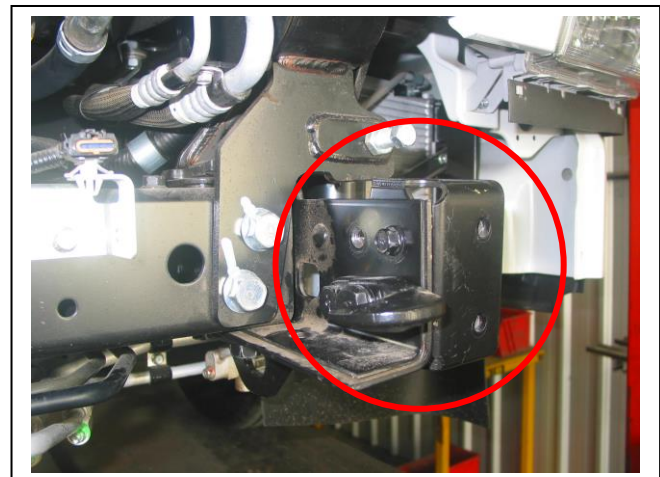


Figure 2 – Grind off remaining weld. Drivers side shown

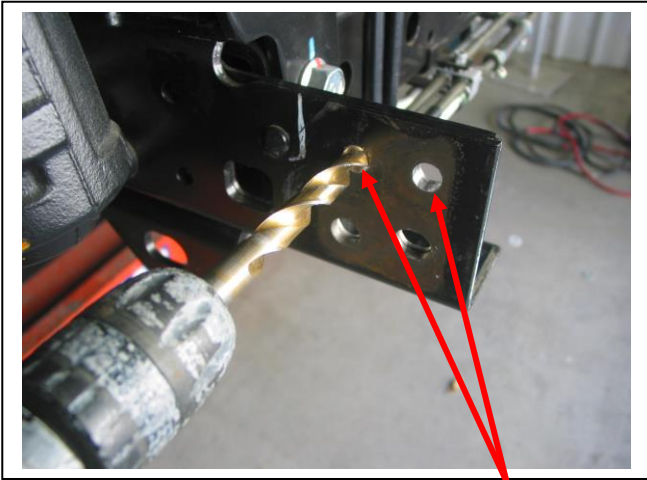


Figure 3 – Drivers side shown Drill two 13mm holes top of chassis,
Drivers and passengers side

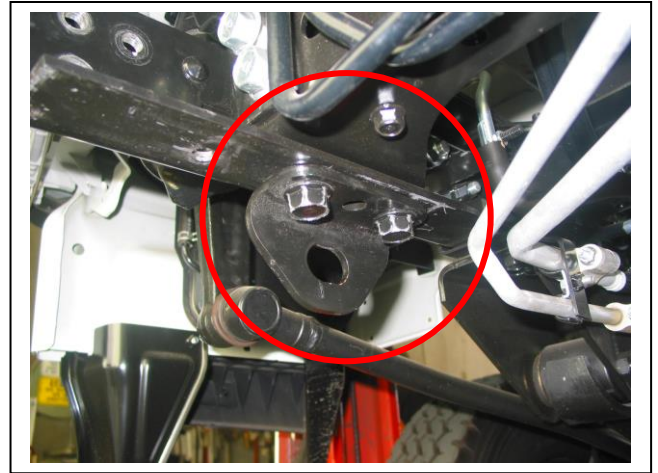


Figure 4



Figure 5 – Assembled winch frame



Figure 6 - 15000Lb winch only.



Figure 7 – Winch frame viewed from rear
Caution: 2 person lift in this state.



Figure 8

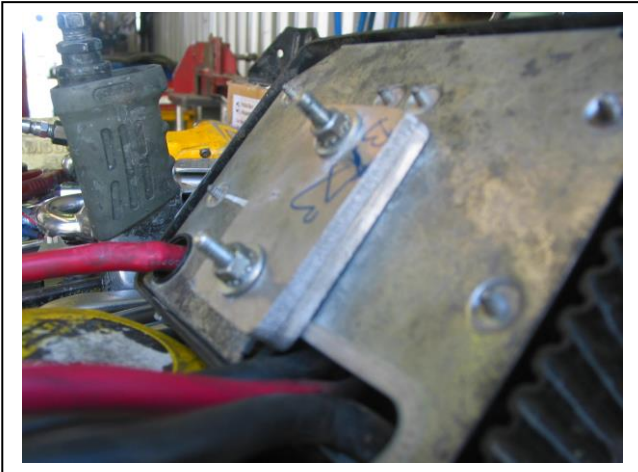


Figure 9

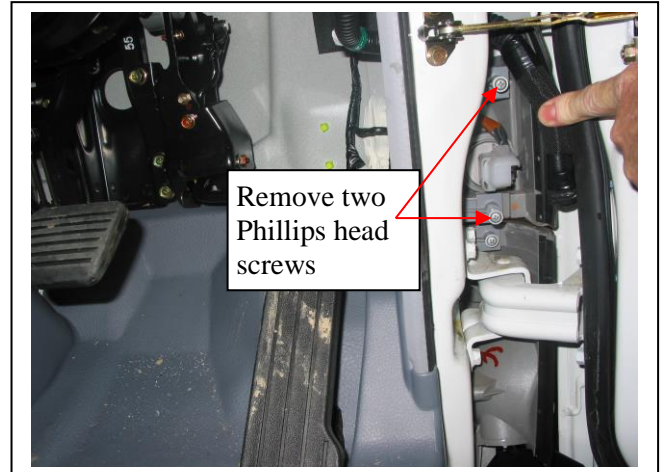


Figure 10 – Driver's side shown

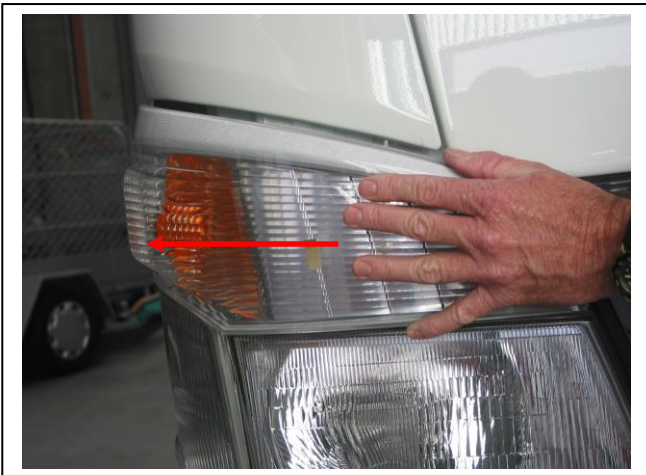


Figure 11 – Push outwards

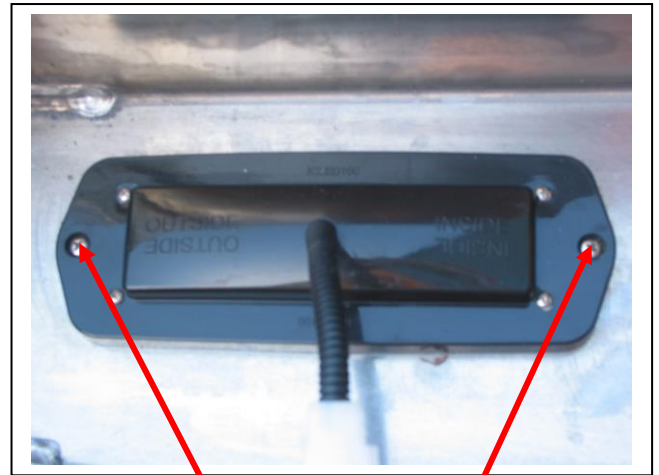


Figure 12
Stainless steel self-tappers

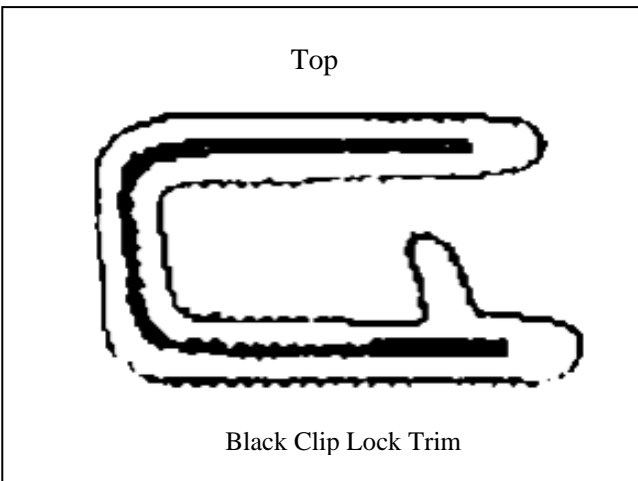


Figure 13



Figure 14



**Lighter
Stronger
Better!**

A: 29 Snook St Clontarf QLD 4019
A: PO Box 122 Margate QLD 4019
P: 07 3897 5700
F: 07 3811 6480
E: info@ecb.com.au
W: ecb.com.au
W: customalloy.com.au



Figure 15 – Front view shown



Figure 16 – Side view shown



**Lighter
Stronger
Better!**

A: 29 Snook St Clontarf QLD 4019
A: PO Box 122 Margate QLD 4019
P: 07 3897 5700
F: 07 3811 6480
E: info@ecb.com.au
W: ecb.com.au
W: customalloy.com.au



Thank you for purchasing an ECB Product

Please ensure that you read the below and complete the warranty registration.

Vehicle Owner / Operator Responsibilities and Product Care **Important Information**

It is the responsibility of the vehicle owner and operator to ensure all nuts and bolts are checked periodically, especially when travelling on corrugated roads. Please ensure these are tightened as per the steps in the provided fitting instructions.

While ECB products are manufactured from high tensile alloy the vehicle owner / operator must check any steel mounting brackets or steel auxiliary parts for signs of corrosion. If you find any corrosion, please contact ECB Pty Ltd to discuss an appropriate solution – 1800 069 145 or www.ecb.com.au.

Product Care

Polished Products

Being a premium mirror polished finish, regular maintenance will be required to keep that iconic ECB shine. We recommend using our own brand of Aluminium Polish. This formula has been tried and tested and in our opinion is the world's best standard.

Directions: Apply a small quantity of Aluminium Polish to a clean soft cloth and rub the metal surface. The longer the rubbing the brighter the surface becomes. Wipe off Aluminium Polish with clean soft cloth. Also suitable for motorised buffing machines. Note: There are more specific details on the polish bottle. Please read before use.

Powder Coated Products

Our powder coated finishes are very low maintenance. In fact, there is actually very little you will ever need to do for this product. Just clean it as you would your car and it will stay looking good as new.

ECB Aluminium Polish

When you're looking for that showroom finish look for your polished automotive products, you can depend on the no compromise quality of East Coast Bullbars Aluminium Polish. This specifically designed product is the best polish available and we guarantee that this \$#!+ works. Within our decades of manufacturing polished alloy products, we have trialled a large range of different polishes on the market and believe without a doubt that nothing beats the finish quality of East Coast Bullbars Aluminium Polish.

East Coast Bullbars Aluminium Polish is excellent for use by hand and is ideal for polished bullbars, nudge bar and stainless-steel products. This polish will clean, polish and protect your product from the elements whilst bringing your products back to that showroom finish look.





**Lighter
Stronger
Better!**

A: 29 Snook St Clontarf QLD 4019
A: PO Box 122 Margate QLD 4019
P: 07 3897 5700
F: 07 3811 6480
E: info@ecb.com.au
W: ecb.com.au
W: customalloy.com.au



Warranty Registration

Please Register your purchase online www.ecb.com.au/warranty-registration

If you have any questions, please contact our national office on 1800 069 145 or www.ecb.com.au

Or post the below information back to ECB, PO Box 122, Margate, QLD 4019.

Contact Details

Name:	
Address:	
Email:	
Phone:	

Purchase Details

Purchased from:	
Date of Purchase:	

Product Details

(You can find this information on the silver label of your ECB Product)

Part Number:	BAVM96SY
Work Order Number:	

By submitting this registration, you automatically subscribe to ECB's mail outs. You can unsubscribe at any time.



**Lighter
Stronger
Better!**

A: 29 Snook St Clontarf QLD 4019
A: PO Box 122 Margate QLD 4019
P: 07 3897 5700
F: 07 3811 6480
E: info@ecb.com.au
W: ecb.com.au
W: customalloy.com.au





**Lighter
Stronger
Better!**

A: 29 Snook St Clontarf QLD 4019
 A: PO Box 122 Margate QLD 4019
 P: 07 3897 5700
 F: 07 3811 6480
 E: info@ecb.com.au
 W: ecb.com.au
 W: customalloy.com.au



DESPATCH CHECKLIST

BAVM96SY

Work Order #	
Finish:	
Transport:	
Due Date:	

- OC.....1 – Pair Steel mounting brackets.
- OC.....1 – steel winch control bracket (BM96SY_CM4MS)
- BK.....1 – steel winch control bracket (BM96SY_A6MS)
- BK.....1 – Alloy winch control bracket (B3IS4458SY_C6A)
- OC.....2 – 4mm Steel spacer plate (BM96SY_B4MS)
- OC.....2 – 2mm alloy light brackets (BAVM96_A2A) (matching shape to welded light bracket)
- OC.....2 – welded light bracket (YBAVM96_LB) ('M' in 3mm welded part)
- OC.....2 – B3AVIS4458 Light blanking plate (colour code to match order)
- OC.....2 – ECB Overriders - **Fitted to Bar**
- OC.....2 – fog light surrounds
- WR.....1 – Pair Steel mounting brackets. – **Fitted to Bar**
- WR.....1 – Steel winch mount bracket – **Fitted to Bar**
- WR.....1 – steel winch control bracket – **Wrap and tape to rear of bar**
- WR.....1 – 6mm Steel winch control bracket – **Wrap and tape to rear of bar**
- WR.....1 – Alloy winch control bracket – **Wrap and tape to rear of bar**
- WR.....2 – 4mm Steel spacer plate – **Wrap and tape to rear of bar**
- WR.....2 – 2mm alloy light brackets – **Wrap and tape to rear of bar**
- WR.....2 – welded light bracket – **Wrap and tape to rear of bar**
- WR.....2 – ECB overriders – **Fitted to Bar**
- WR.....2 – fog light surrounds – **Fitted to Bar**



**Lighter
Stronger
Better!**

A: 29 Snook St Clontarf QLD 4019
A: PO Box 122 Margate QLD 4019
P: 07 3897 5700
F: 07 3811 6480
E: info@ecb.com.au
W: ecb.com.au
W: customalloy.com.au



Is this product “the best it can be” Yes _____ / _____
Wrapper’s initials / Checker initials

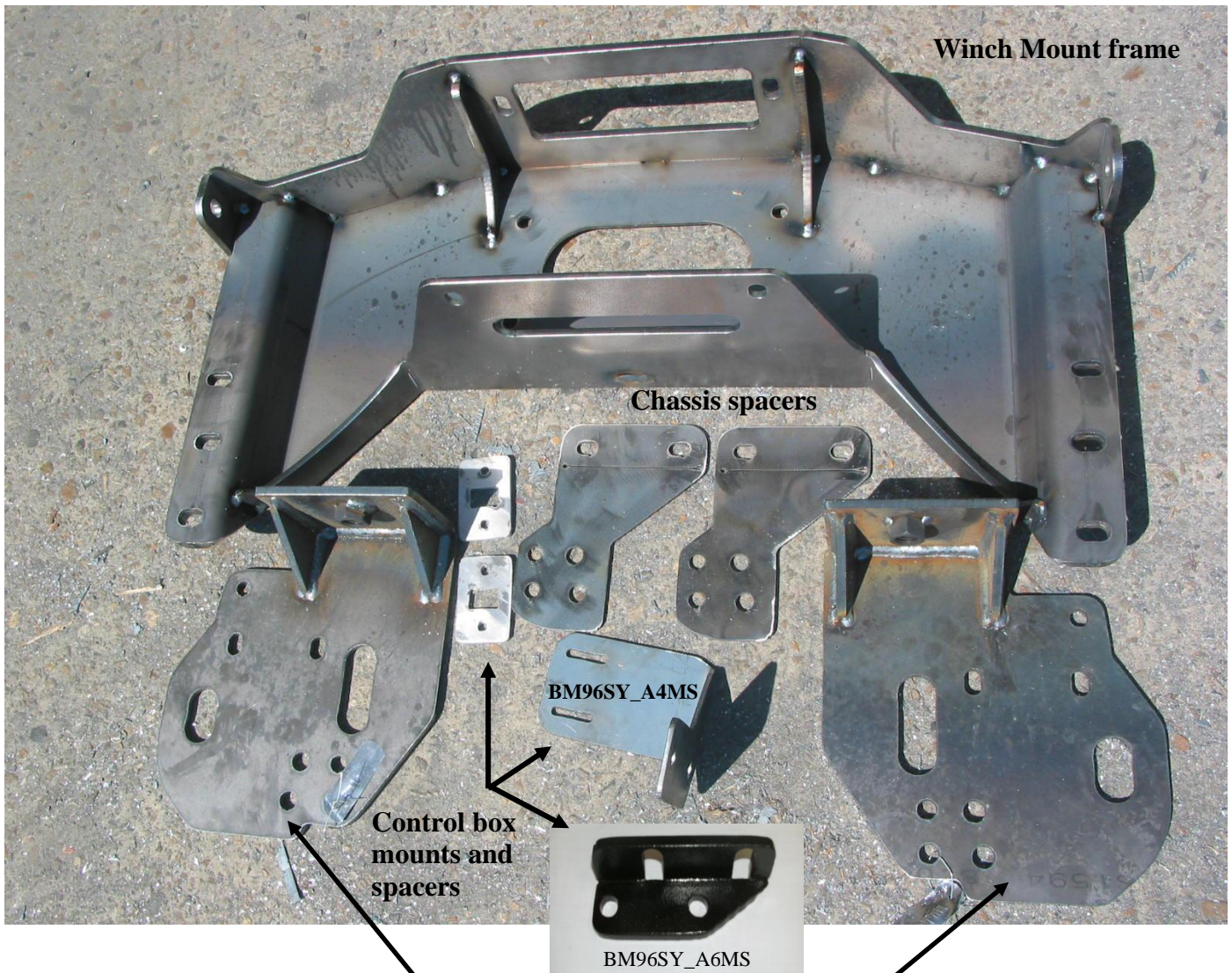
If NO fix before continuing

All parts checked and completed by:

Nut and bolts: _____ Date __/__/__

Order control: _____ Date __/__/__

Final wrap check: _____ Date __/__/__

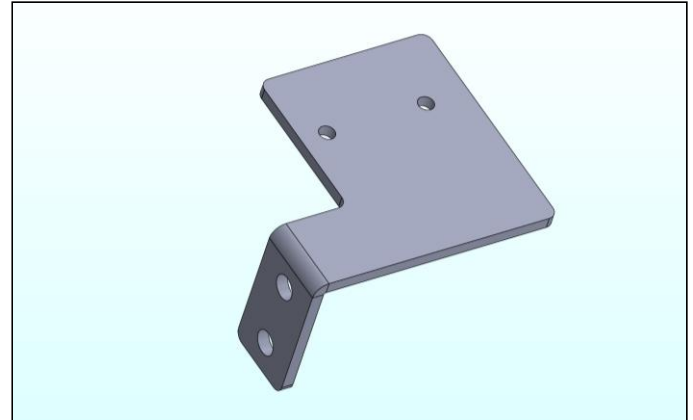


Passenger and driver chassis mounts
(1 pair steel mounting brackets)

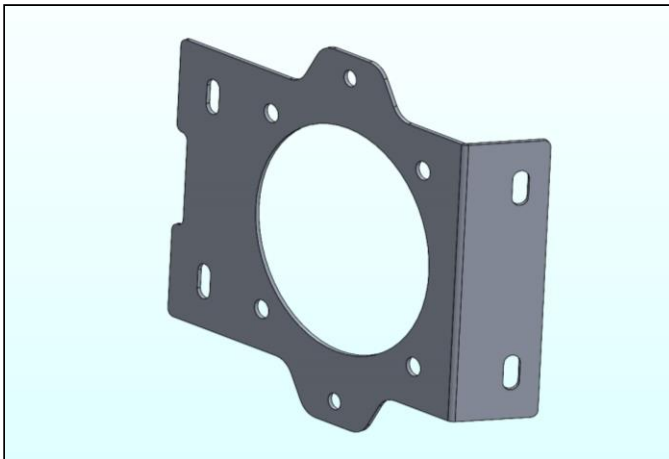
© Copyright – ECB Pty Ltd – 2021



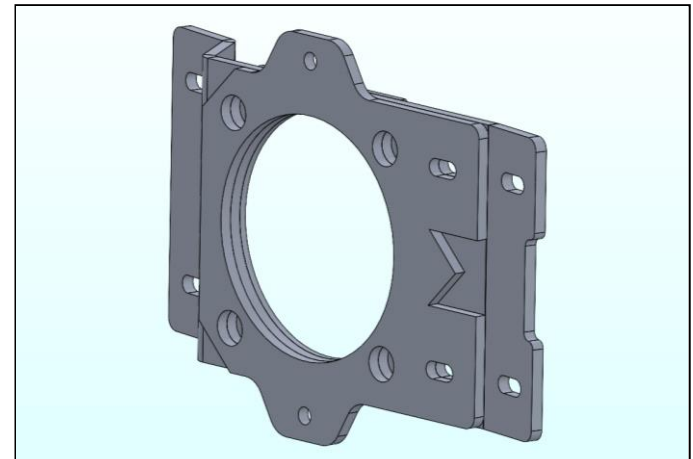
Number Plate mount assembly
Number plate hinge plate A
Number plate hinge C 40_A3Al



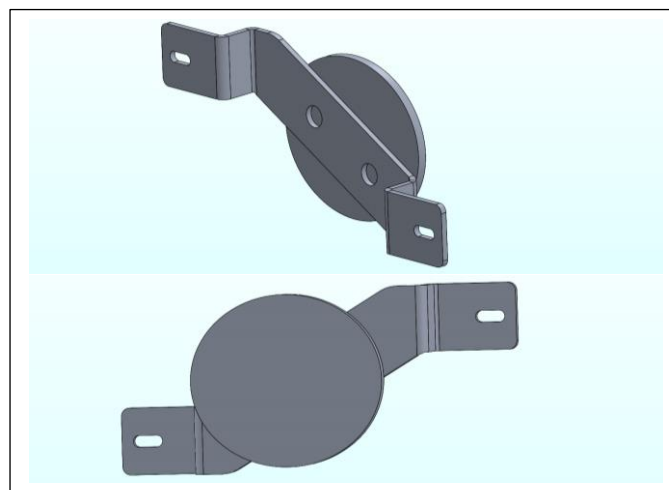
6mm Alloy winch control bracket
(B3IS4458_C6A)



2mm Alloy Light bracket
Match shape of Welded light bracket



Welded light bracket
(YBAV96SY)



B3IS4458 LIGHT BLANKING PLATE