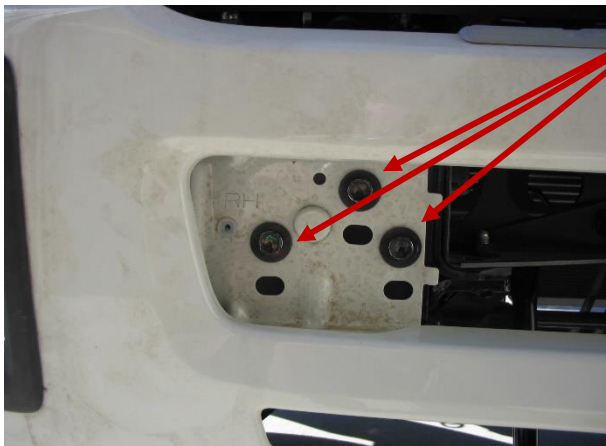


B3IS5465SY Fitting Instruction

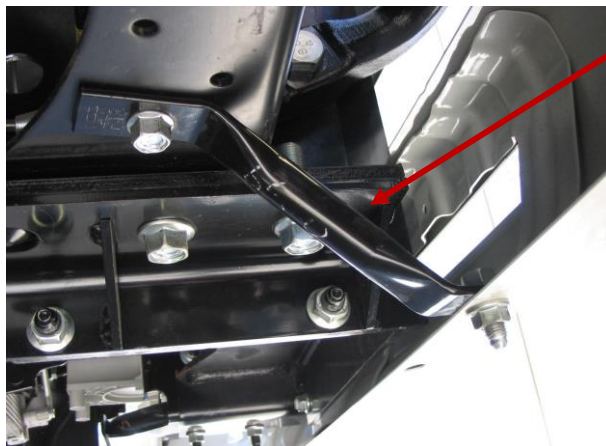
FTS FH 4x4 2008 –



REMOVE BUMPER BAR
REMOVE PLASTIC COVER
DRIVERS SIDE SHOWN



REMOVE BUMPER BOLTS, THREE (3) PER
SIDE
DISCARD BOLTS



REMOVE BUMPER STAYS, ONE (1) PER SIDE

B3IS5465SY Fitting Instruction

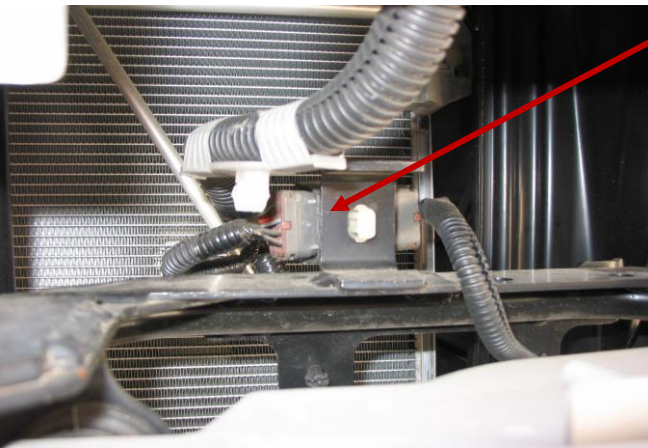
FTS FH 4x4 2008 –



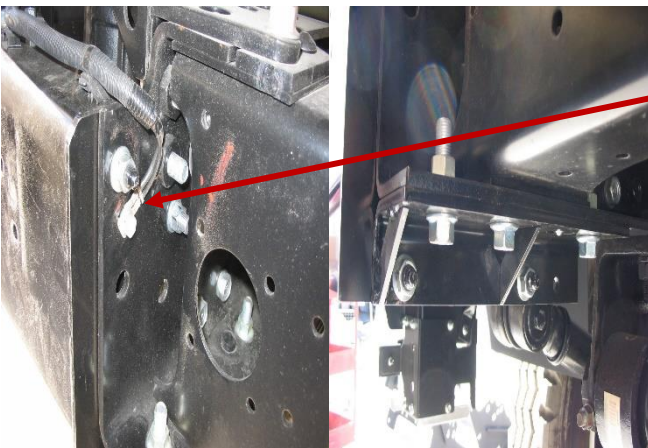
REMOVE NUT, ONE (1) PER SIDE
PASSENGER SIDE SHOWN



BUMPER REMOVED



UNPLUG HEADLAMP WIRING FROM
CONNECTOR AND HEADLAMP MOUNTING
BRACKET



REMOVE HEADLAMP BRACKET
REMOVE EARTH WIRE
DRIVER SIDE SHOWN

B3IS5465SY Fitting Instruction

FTS FH 4x4 2008 –



	<p>REMOVE HEADLAMP MOUNTING BRACKET</p> <p>REMOVE TOW HOOK</p> <p>REMOVE EARTH WIRE</p>
	<p>HEADLAMP REMOVED</p> <p>PASSENGER SIDE SHOWN</p>
	<p>INSTALL FOUR (4) 1 1/2" x 1/2" BOLTS, WASHERS (2 PER BOLT) AND NYLOC NUTS</p> <p>INSTALL TWO (2) 2" x 9/16" BOLTS, WASHERS (2 PER BOLT) AND NYLOC NUTS</p> <p>TIGHTEN BOLTS AND NUTS ENOUGH TO ALLOW FINAL ADJUSTMENT LATER</p> <p>REFIT EARTH WIRE USING ONE (1) M8 x 25mm BOLT AND FLAT WASHER</p>
	<p>INSTALL FOUR (4) 1 1/2" x 1/2" BOLTS, WASHERS (2 PER BOLT) AND NYLOC NUTS</p> <p>INSTALL TWO (2) 2" x 9/16" BOLTS, WASHERS (2 PER BOLT) AND NYLOC NUTS</p> <p>TIGHTEN BOLTS AND NUTS ENOUGH TO ALLOW FINAL ADJUSTMENT LATER</p> <p>REFIT EARTH WIRE USING ONE (1) M8 x 25mm BOLT AND FLAT WASHER</p>

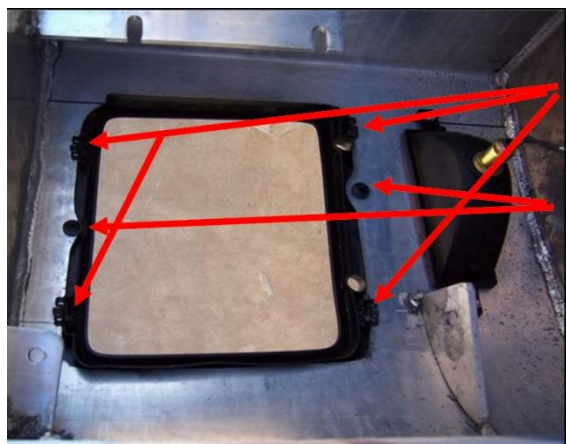
B3IS5465SY Fitting Instruction

FTS FH 4x4 2008 –



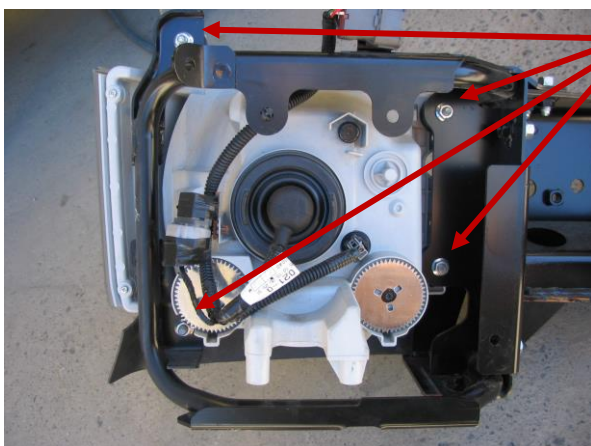
REMOVE HEADLAMP SURROUND FROM BUMPER BAR

FOUR CLIPS



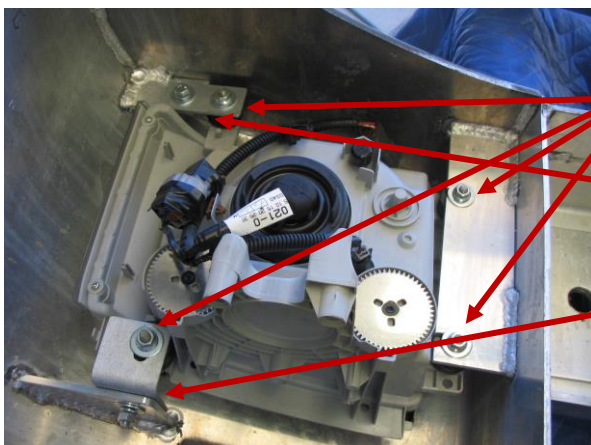
INSTALL HEADLAMP SURROUND INTO BULLBAR USING ORIGINAL FOUR (4) CLIPS

USE ROUND SPRING CLIPS AND PUSH INTO LOCATING PINS, TWO (2) PER HEADLAMP SURROUND



REMOVE HEADLAMP FROM BRACKET

RETAIN NUTS



INSTALL HEADLAMP INTO BULLBAR

USE ORIGINAL FOUR (4) NUTS AND $\frac{5}{16}$ " FLAT WASHER

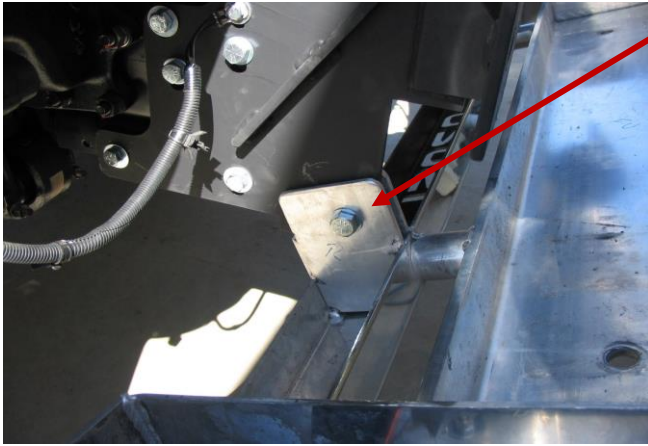
USE NEW FLAT BRACKET AND ONE (1) M8 x 25mm BOLT, TWO (2) FLAT WASHERS, ONE (1) SPRING WASHER AND NUT

USE NEW ANGLE BRACKET AND ONE (1) M8 x 25mm BOLT, TWO (2) FLAT WASHERS, ONE (1) SPRING WASHER AND NUT

PASSENGER SIDE SHOWN

B3IS5465SY Fitting Instruction

FTS FH 4x4 2008 –



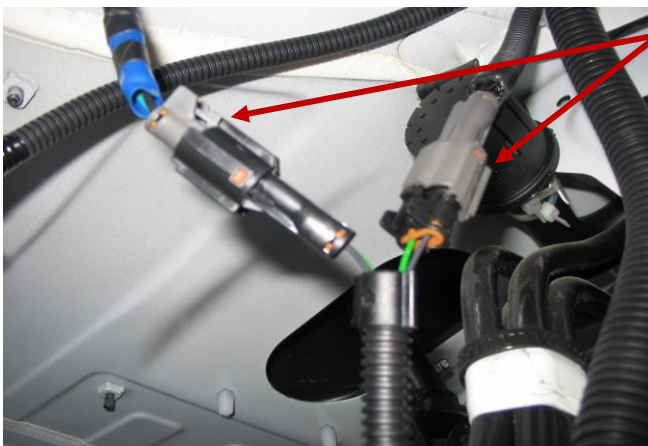
FIT BULLBAR ONTO MOUNT USING TWO (2) 2 X 5/8" BOLTS, WASHERS AND NYLOC NUT

TIGHTEN NUTS TO ENGAGE THREAD INTO NYLOC AS TO ALLOY BULLBAR PIVOT

DRIVER SIDE SHOWN



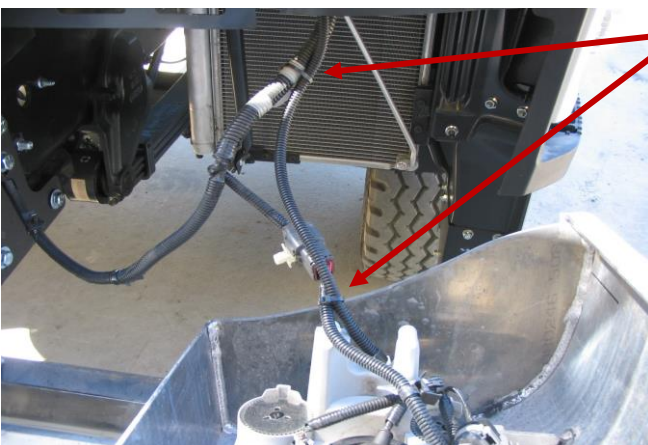
REFIT ORIGINAL TOW HOOK USING ORIGINAL BOLTS, WASHERS AND NUTS



UNPLUG BODY MOUNTED INDICATOR AND PLUG BULLBAR MOUNTED INDICATOR HARNESS AS SHOWN

PLUG IN THE OTHER HARNESS END INTO THE LAMP THAT IS FITTED IN THE BULLBAR

TO BULLBAR LAMP



CABLE TIE INDICATOR HARNESS TO HEADLAMP HARNESS

B3IS5465SY Fitting Instruction

FTS FH 4x4 2008 –



RAISE AND SECURE BULLBAR

LOCK BULLBAR IN PLACE USING TWO EYEBOLTS SUPPLIED

ALIGN BULLBAR TO VEHICLE ENSURING BULLBAR GAPS ARE EQUAL

TORQUE ALL FASTENERS

LOCATION	SIZE	TORQUE
BULLBAR MOUNT	1/2"	80Nm
BULLBAR MOUNT	9/16"	140Nm



USE A 1/8" DRILL BIT TO DRILL A HOLE INTO THE BULLBAR

USING BLACK SELF-TAPPING SCREW, SCREW IT INTO THE BULLBAR TO RETAIN HEADLAMP SURROUND

ONE (1) PER HEADLAMP

DRIVER SIDE SHOWN



FIT TILT CAB WARNING LABEL TO DRIVERS SIDE DOOR AS SHOWN



FIT TILT CAB WARNING LABEL TO BACK OF CAB NEAR TILT LEVER

B3IS5465SY Fitting Instruction

FTS FH 4x4 2008 –



FITTING KIT

P/N B3IS9465SY

Qty	Length	Diameter	Thread Pitch	Description
HEADLIGHT BOLT KIT				
4	25mm	8mm	1.25mm	Metric Bolt Grade 8H/T
4		8mm	1.25mm	Metric ZP Nut
16		8mm		Flat Washer
4		8mm		Spring Washer
4	3/4"	6 Gauge		Black Screw
4		6mm		Shaft Clip
ADDITIONS				
2	Flat Light Brackets			
1	Drivers Side Angle Bracket			
1	Passenger Side Angle Bracket			
SEALED IN HALF SIZE CLEAR BAG AND PLACED IN MOUNT BOLT KIT BAG				

MOUNT BOLT KIT				
2	25mm	8mm	1.25mm	Metric Bolt Grade 8H/T
2		8mm		Flat Washer
8	2"	1/2"	UNC	Bolt Grade 8H/T
8		1/2"	UNC	Nyloc Nut
16		1/2"		Flat Washer
4	2"	9/16"	UNC	Bolt Grade 8H/T
4		9/16"	UNC	Nyloc Nut
8		9/16"		Flat Washer
1	Fitting Instructions			
2	Tilt Bullbar Warning Stickers			
2	200mm Cable Tie			
1	FTS Patch Harness			P/N ICHFTS-FSS
SEALED IN CLEAR BAG AND TAPED TO BAR				

ATTACHED TO BULLBAR					
2		3/4"	UNC	Eyebolt Grade 8H/T	P/N ICEYEBOLT
2		3/4"		Flat Washer	
2	2 1/2"	5/8"	UNC	Bolt Grade 8H/T	
2		5/8"	UNC	Nyloc Nut	
4		5/8"		Flat Washer	
ADDITIONS					
2	LED Indicator Lights (95200CUST)			P/N ICLED33IND	
1	Steel Bullbar Mount				

B3IS5465SY Fitting Instruction

FTS FH 4x4 2008 –



B3IS5465SY Fitting Instruction FTS FH 4x4 2008 –

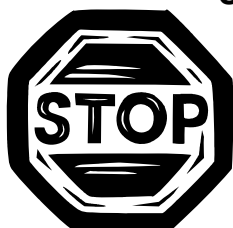


DESPATCH CHECKLIST B3IS5465SY ISUZU FTS FH 4x4 2008-

Work Order No:	
Finish:	
Transport:	
Due Date:	

BK	_____	2	Flat Light Brackets – Included in Headlight Bolt Kit
BK	_____	1	Drivers Side Angle Brackets – Included in Headlight Bolt Kit
BK	_____	1	Passenger Side Angle Brackets – Included in Headlight Bolt Kit
BK	_____	1	Headlight Bolt Kit – Included in Mount Bolt Kit
BK	_____	1	Mount Bolt Kit
OC	_____	1	Steel Mounting Bracket
OC	_____	2	LED Indicator Lights (ICLED33IND-95200CUST)
OC	_____	2	Overrides (3" CA01 Plastic)
OC	_____	2	Custom Alloy Badges
WR	_____	2	Eyebolts (³ / ₄ " UNC ZP) and Washers – Fitted To Bar
WR	_____	2	2½" x ⁹ / ₁₆ " UNC Bolt Grade 8H/T – Fitted To Bar
WR	_____	2	⁹ / ₁₆ " Nyloc Nut – Fitted To Bar
WR	_____	4	⁹ / ₁₆ " Flat Washer – Fitted To Bar
WR	_____	2	LED Indicator Lights (ICLED33IND-95200CUST) – Fitted to Bar
WR	_____	1	Mount Bolt Kit – Taped to Bar

**See other side of this page for photos of all mounts
IS THIS PRODUCT "THE BEST IT CAN BE"?
IF NO FIX BEFORE CONTINUING**



_____/_____
Wrapper's Initials Checker's Initials

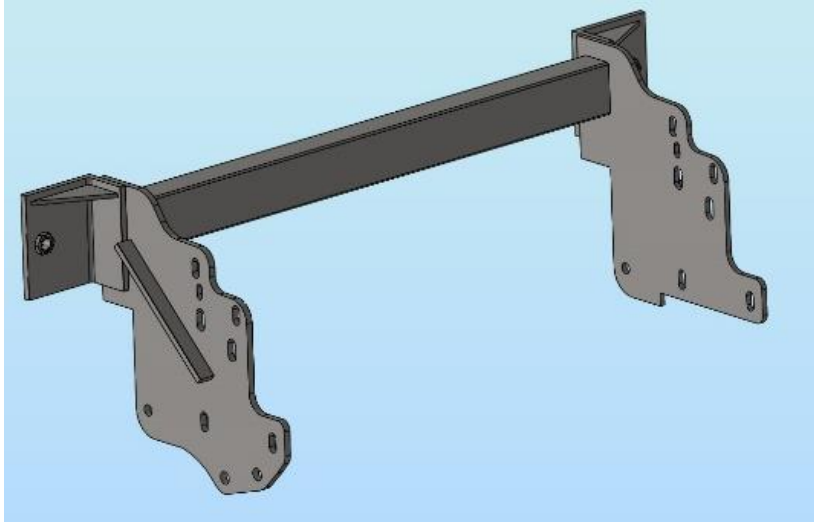
ALL PARTS CHECKED AND COMPLETED BY:

NUTS AND BOLTS: _____ DATE: ___/___/___

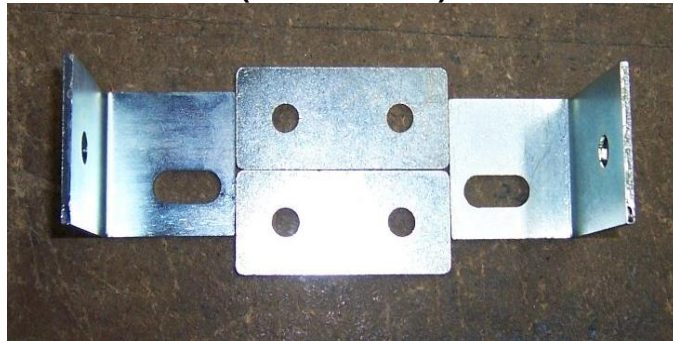
ORDER CONTROL: _____ DATE: ___/___/___

FINAL WRAP CHECK: _____ DATE: ___/___/___

B3IS5465SY Fitting Instruction
FTS FH 4x4 2008 –
STEEL MOUNT



ANGLE AND FLAT LIGHT BRACKETS
(IN BOLT KIT)



_____/_____
Wrapper's Initials Checker's Initials