

B3IS0931SY FITTING INSTRUCTIONS ISUZU N5 NNR/NPR 05-07 DELUXE 3 BULLBAR

Step 1.

- Park Vehicle on level ground and apply park brake.

Step 2.

- Remove two (2) bolts from plastic dust shield under front of vehicle.
- Discard bolts.



Step 3.

- Remove front bumper – four (4) bolts.
- Discard bolts.



Step 4.

- Remove tow hook, two (2) nuts and bolts.
- Discard tow hook and fasteners.



Step 5.

- Tow hook removed.



Step 6.

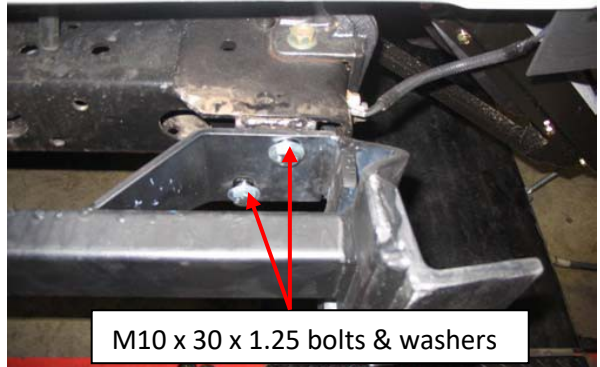
- Remove steel mounting bracket from bullbar as supplied.
- Attach steel mounting bracket to chassis using two (2) M10 x 1.25 x 30mm bolts and washers each side.
- Right hand side as shown in photo. Left hand side see next step
- Leave bolts loose until final adjustment.



M10 x 30 x 1.25 bolts & washers

Step 7.

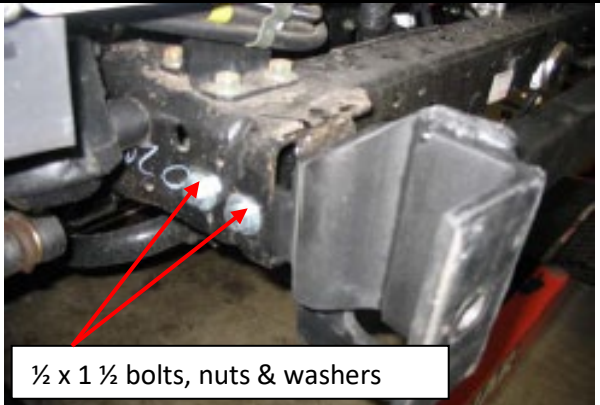
- Leave bolts loose until final adjustment.



M10 x 30 x 1.25 bolts & washers

Step 8.

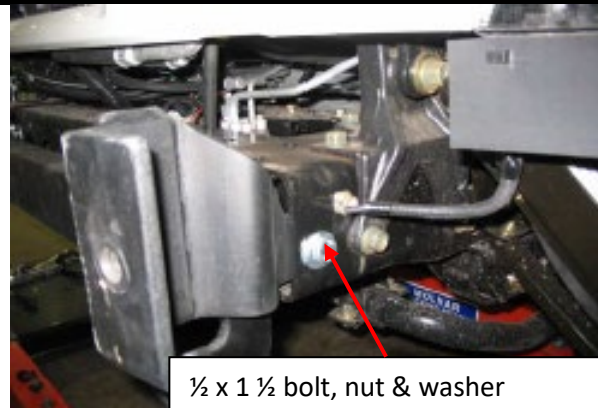
- Attach right hand side of steel mounting bracket using two (2) ½ x 1 ½" bolts, washers and nuts.
- Leave bolts loose until final adjustment.



½ x 1 ½ bolts, nuts & washers

Step 9.

- Attach left hand side of steel mounting bracket using one (1) ½ x 1 ½" bolt, washer and nut.
- Leave bolts loose until final adjustment



Step 10.

- Attach bullbar to steel mounting brackets using two (2) 9/16 x 2" bolts, four (4) washers and two (2) nyloc nuts.
- Tighten nyloc nuts enough to engage the nyloc and still allow the bullbar to pivot on the bolts.



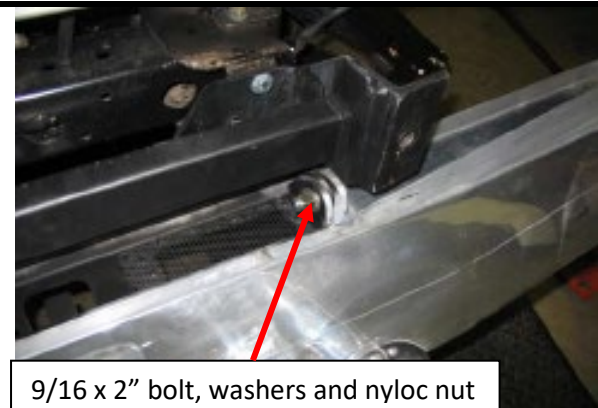
Step 11.

- Right hand side shown.
- Leave bolts loose until final adjustment.



Step 12.

- Left hand side shown.
- Leave bolts loose until final adjustment.



Step 13.

- Raise and secure bullbar, lock bullbar in place using the two (2) eye bolts (supplied)
- Align bullbar to vehicle ensuring bullbar gaps are equal.
- Torque all fasteners.

Location	Size	Torque
Steel mount (front)	10mm	44 Nm
Steel mount (right hand side)	½"	130 Nm
Steel mount (left hand side)	½"	130 Nm



Step 14

- Lower bullbar



Step 15.

- Unclip rubber trim.
- Remove 6mm bolt as shown.
- Right hand side shown, left hand side similar.



Step 16.

- Unclip lamp assembly as shown.
- Right hand side shown, left hand side similar.



Step 17.

- Lamp assemble removed.



Step 18.

- Connect bullbar lamp wiring harness between lamp assembly and vehicle wiring harness as shown.
- Route wiring harness behind lamp bracket as shown.
- Connect wiring harness to bullbar lamp.
- Right hand side shown, left hand side similar.



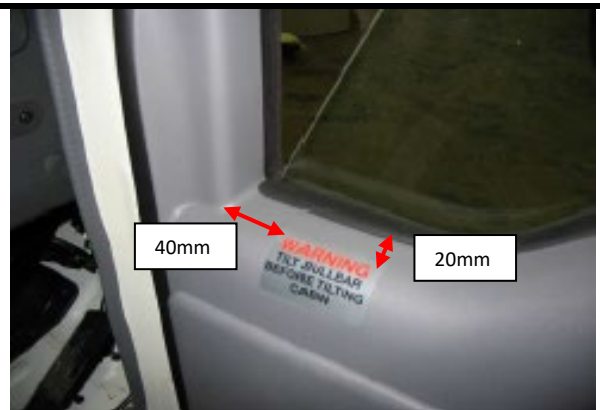
Step 19.

- Place Tilt Warning label as shown near tilt handle.
- Ensure area on cab is clean and dry before fitting label.



Step 20

- Place 2nd label on inside of driver's door as shown.





**WORLD'S BEST
ALLOY BULLBARS**

A: 29 Snook St Clontarf QLD 4019

P: PO Box 122 Margate QLD 4019

T: 07 3897 5700

E: info@ecb.com.au

ABN: 25 010 676 034

Part of GUD Holding Limited - ASX: GUD



customalloy.com.au

ecb.com.au

Step21.

- Raise bullbar and lock in place.
- Check bullbar lamp function.



Fitting Kit

4	-	M10 x 1.5 x 30mm bolts.
4	-	M10 HD flat washers
3	-	½ x ½" bolts.
3	-	½ Nyloc nuts.
6	-	½ Flat washers.
2	-	N5 NPR Parker / Indicator Patch Harnesses
2	-	Tilt Bullbar Warning sticker

Attached to Bullbar

1	-	Steel mounting bracket
2	-	¾ Eye Bolts
2	-	¾ Flat Washers
2	-	9/16 x 2 ½" bolts
2	-	9/16 Nyloc Nuts
4	-	9/16 Flat washers
2	-	24 Volt Parker / Indicator Lights



WORLD'S BEST
ALLOY BULLBARS

A: 29 Snook St Clontarf QLD 4019

P: PO Box 122 Margate QLD 4019

T: 07 3897 5700

E: info@ecb.com.au

ABN: 25 010 676 034

Part of GUD Holding Limited - ASX: GUD



Australia's Leading Manufacturer of Truck Bullbars

ecb.com.au

customalloy.com.au

DESPATCH CHECKLIST

B3IS0931SY

Work Order #		Photo of steel mount on back of page
Finish:		
Transport:		
Due Date:		

OC	_____	1	Steel Mounting Bracket
OC	_____	2	3" Overrides (CA01 Plastic)
OC	_____	2	Custom Alloy Badges – Fitted to Overrides
OC	_____	2	LED Parker Lights (ICLED33INDPRK-95202CUST)
OC	_____	1	Bolt Kit
WR	_____	1	Steel Mounting Bracket – Fitted to Bar
WR	_____	2	3" Overrides (CA01 Plastic with CA badges) – Fitted to Bar
WR	_____	2	Eyebolts (3/4" UNC ZP) and Washers – Fitted to Bar
WR	_____	2	2 1/2" x 9/16" UNC Bolt Grade 8H/T – Fitted to Bar
WR	_____	2	9/16" Nyloc Nut – Fitted to Bar
WR	_____	4	9/16" Flat Washer – Fitted to Bar
WR	_____	2	LED Parker Lights (ICLED33INDPRK-95202CUST) – Fitted to Bar
WR	_____	1	Bolt Kit – Taped to Mount



Is this product "the best it can be" Yes _____ / _____
If NO fix before continuing
Wrapper's initials / Checker initials

All parts checked and completed by:

Nut and bolts: _____ Date ___ / ___ / ___

Order control: _____ Date ___ / ___ / ___

Final wrap check: _____ Date ___ / ___ / ___



**WORLD'S BEST
ALLOY BULLBARS**

A: 29 Snook St Clontarf QLD 4019

P: PO Box 122 Margate QLD 4019

T: 07 3897 5700

E: info@ecb.com.au

ABN: 25 010 676 034

Part of GUD Holding Limited - ASX: GUD



ecb.com.au

customalloy.com.au



Steel Mounting bracket - **Fitted to Bar**

_____/____

Wrapper's initials / Checker initials