

8V45SY / NB6V45SY / NBV45SY

FITTING INSTRUCTIONS

VOLKSWAGON AMAROK V6 1/17on TYPE 8, 63mm SERIES 2 NUDGE BAR and 76mm NUDGE BAR VEHICLE FRONTAL PROTECTION SYSTEM (VFPS) FOR AIR BAG & ADR COMPLIANT VEHICLES

Ensure these instructions are left with the vehicle owner and/or operator.

Check installation hardware before commencing.

Special Requirements: T25 and T30 Torx drivers.

1. Lift bonnet.
2. Remove two plastic clips and two T30 Torx head screws from top of grille. **See figure 1.**
3. From under wheel arches, remove three T25 Torx head screws and two T30 Torx head bolts. Under bonnet, remove four 3mm allen head plastic screw clips. Remove centre number plate two T25 Torx head screws behind number plate (if fitted). Two 10mm head screws from rear wing. Gently pull sides of bumper away from vehicle to unclip from retaining clips, and down on lower rear corner to unlock from retaining lug at front of inner guard. Disconnect fog lights and sensor wiring plug (if fitted) and remove air sensor from bumper as removing bumper.
4. Remove grille by depressing grille clips at rear of grille. **See figure 2.**
5. Remove lower polystyrene bumper infill.
6. Remove two grey push pull clips from front of chassis cross member into lower air dam. Carefully unclip lower air dam from front of radiator and remove.
7. Fit ECB steel mounting brackets (supplied) to front of bumper support, rear leg to inside of chassis rails. Use two M12 x 40 bolts, flat washers, spring washers and nuts (per side) (supplied) for front, two M10 x 40 bolt and washer on 300mm wire, flat washer, spring washer and nut (supplied) for inside of chassis rail. Inside of chassis rails are accessible from welded connection area between chassis rail and front cross member. **See figure 3.** **Finger tighten only.** Ensure mounts are vertical. NOTE: On earlier vehicles there is a captive 8 mm nut on the drivers side inner chassis rail. A M8 x 40mm bolt, spring washer and flat washer has been included to be used in this vehicle.
8. Measure inside measurement of alloy mounts. Set measurement to the outside of ECB steel mounting brackets to suit ECB alloy protection bar. **Tighten all bolts.** Ensure ECB steel mounting brackets remain vertical and central to vehicle.
9. Using measurement previously taken for ECB steel mounting brackets, measure and mark grille for trimming. Check measure marking to ensure correct measurements. Trim grille to suit mounts. **See figure 4.**
10. Hold polystyrene bumper infill against mounts. **See figure 5.** Trim to fit around mounts into correct position. Refit to vehicle.
11. Trim attachment points from radiator air dam. **See figure 6.** Refit to bottom of radiator and chassis cross member in original position.

12. Remove sensors from sensor housing in bumper and relocate in ECB protection bar. See figures 7 and 8.
Centre sensors only for nudge bar and series two and all sensors for type 8
13. Remove sheath from parking sensor wiring harness. Working on one wire at a time, cut wire to sensor plug and join extension wire to the middle with solder joiners supplied. Once all joined and retaped put back in sheath and push through hole in bumper skin as seen in See figure 9 (pressure is required to push through hole in bumper skin). **NOTE:** Only centre plugs need to be adapted for 76mm Nudge Bar and Series 2 Nudge Bar. All sensors need to be adapted for Type 8.
14. Refit bumper to vehicle as per reverse of steps 2 and 3.
15. Fit ECB protection bar to front of ECB steel mounting brackets using two M10 x 40 bolts, flat washers, spring washers and nuts (per side) (supplied). **Finger tighten only.**
16. Align ECB protection bar to vehicle. See figures 10, 12 and 14 for front views and figures 11, 13 and 15 for side views. **Tighten all bolts.**
17. Refit grille to bumper.
18. Check parking sensors for correct operation.

ENSURE NUMBER PLATE IS CLEARLY VISABLE

Note: When fitting/refitting the licence plate to the vehicle, ensure there is no obstruction to licence plate vision in accordance with local authorities. If required relocate licence plate to an alternate location.

Further VFPS Notes:

- a) Do not attach VFPS to the vehicle using anchorages not intended for this purpose (e.g. engine mounting bolts).
- b) Do not use this product for any vehicle make or model, other than those specified by the VFPS manufacturer.
- c) Do not remove the plaque or label from the VFPS.
- d) Do not modify the structure of the VFPS in any way.
- e) No accessory or fitment should project forward of the VFPS forward profile.
- f) **ENSURE THESE INSTRUCTIONS ARE LEFT WITH VEHICLE OWNER AND/OR OPERATOR.**

IMPORTANT INFORMATION

Periodically check bolts and nuts for correct tightness, especially if travelling on rough roads

FITTING KIT

1 – Pair ECB steel mounting brackets	6 – M10 spring washers
4 – M12 x 1.75 x 40mm bolts	6 – M10 x 1.5 nuts
8 – M12 flat washers	1 – M8 x 40mm bolt
4 – M12 spring washers	1 – 5/16 x 1 x 16 flat washer
4 – M12 x 1.75 nuts	1 – M8 spring washer
2 – M10 x 1.5 x 40mm bolt and washer on 300mm wire	12 – Extension wires (1mm x 200 long black cable)
4 – M10 x 1.5 x 40mm bolts	24 – Solder joiners
10 – M10 flat washers	

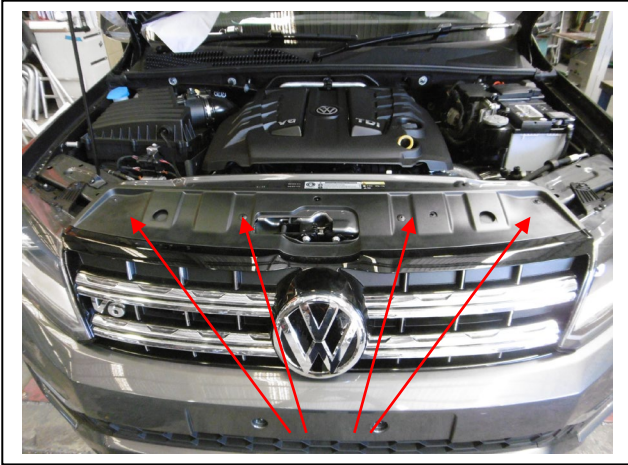


Figure 1

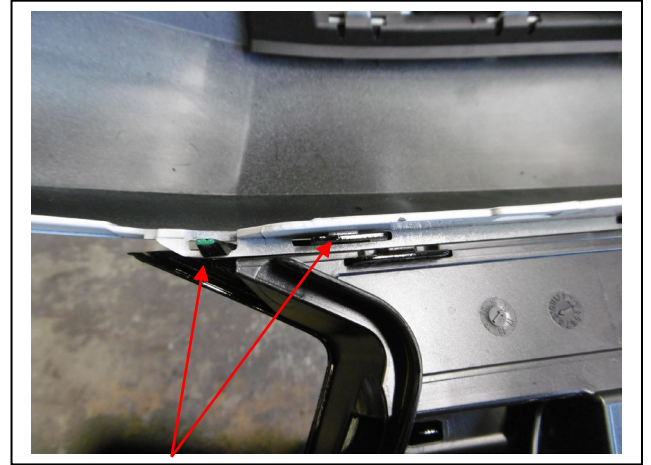


Figure 2

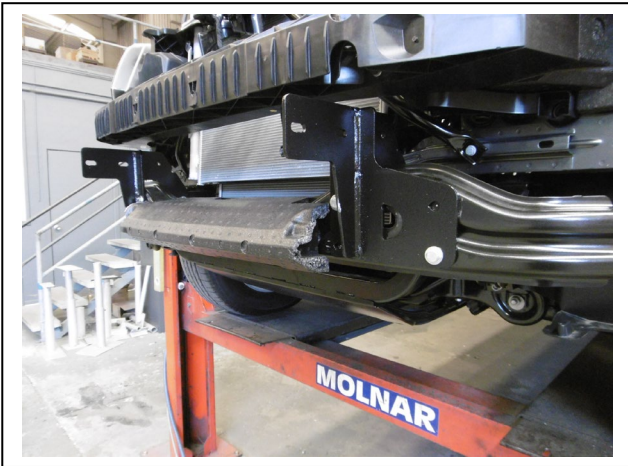


Figure 3

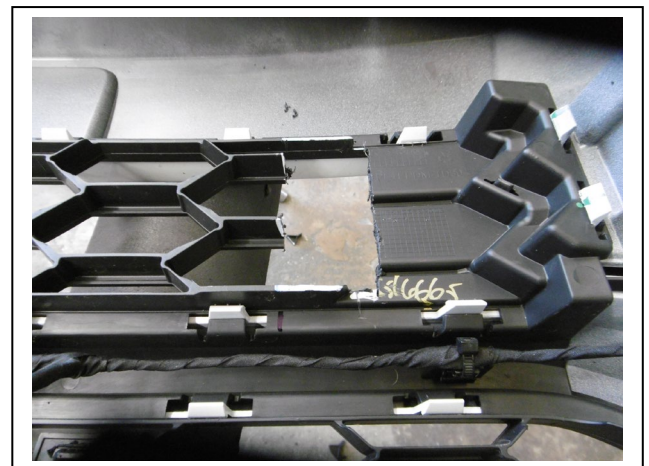


Figure 4

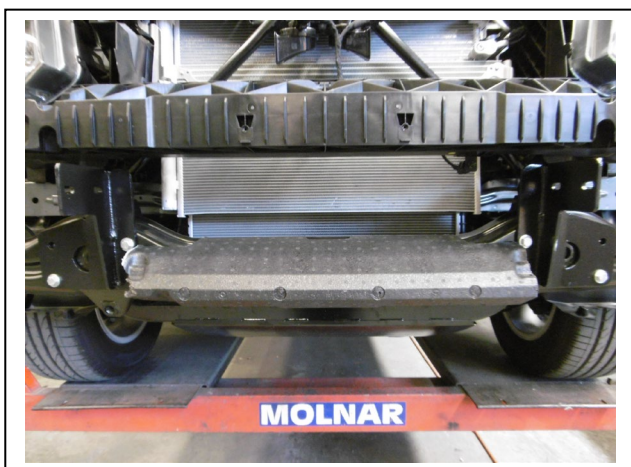


Figure 5



Figure 6

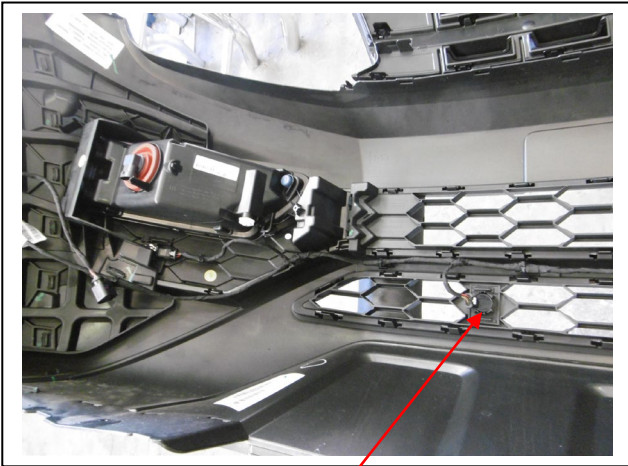


Figure 7



Figure 8



Figure 9



Figure 10 Side view



Figure 11. Front view.



Figure 12. Side view.



Figure 13. Front view.



Figure 14. Side view.



Figure 15. Front view.

Thank you for purchasing an ECB Product

Please ensure that you read the below and complete the warranty registration.

Vehicle Owner / Operator Responsibilities and Product Care

Important Information

It is the responsibility of the vehicle owner and operator to ensure all nuts and bolts are checked periodically, especially when travelling on corrugated roads. Please ensure these are tightened as per the steps in the provided fitting instructions.

While ECB products are manufactured from high tensile alloy the vehicle owner / operator must check any steel mounting brackets or steel auxiliary parts for signs of corrosion. If you find any corrosion, please contact ECB Pty Ltd to discuss an appropriate solution – 1800 069 145 or www.ecb.com.au.

Product Care

Polished Products

Being a premium mirror polished finish, regular maintenance will be required to keep that iconic ECB shine. We recommend using our own brand of Aluminium Polish. This formula has been tried and tested and in our opinion is the world's best standard.

Directions: Apply a small quantity of Aluminium Polish to a clean soft cloth and rub the metal surface. The longer the rubbing the brighter the surface becomes. Wipe off Aluminium Polish with clean soft cloth. Also suitable for motorised buffing machines. Note: There are more specific details on the polish bottle. Please read before use.

Powder Coated Products

Our powder coated finishes are very low maintenance. In fact, there is actually very little you will ever need to do for this product. Just clean it as you would your car and it will stay looking good as new.

ECB Aluminium Polish

When you're looking for that showroom finish look for your polished automotive products, you can depend on the no compromise quality of East Coast Bullbars Aluminium Polish. This specifically designed product is the best polish available and we guarantee that this \$#!+ works. Within our decades of manufacturing polished alloy products, we have trialled a large range of different polishes on the market and believe without a doubt that nothing beats the finish quality of East Coast Bullbars Aluminium Polish.

East Coast Bullbars Aluminium Polish is excellent for use by hand and is ideal for polished bullbars, nudge bar and stainless-steel products. This polish will clean, polish and protect your product from the elements whilst bringing your products back to that showroom finish look.





**Lighter
Stronger
Better!**

A: 29 Snook St Clontarf QLD 4019
 A: PO Box 122 Margate QLD 4019
 P: 07 3897 5700
 F: 07 3811 6480
 E: info@ecb.com.au
 W: ecb.com.au
 W: customalloy.com.au



Warranty Registration

Please Register your purchase online www.ecb.com.au/warranty-registration
 If you have any questions, please contact our national office on 1800 069 145 or www.ecb.com.au

Or post the below information back to ECB, PO Box 122, Margate, QLD 4019.

Contact Details

Name:	
Address:	
Email:	
Phone:	

Purchase Details

Purchased from:	
Date of Purchase:	

Product Details

(You can find this information on the silver label of your ECB Product)

Part Number:	8V45SY, NB6V45SY, NBV45SY (please circle your part number)
Work Order Number:	

By submitting this registration, you automatically subscribe to ECB's mail outs. You can unsubscribe at any time.



**Lighter
Stronger
Better!**

A: 29 Snook St Clontarf QLD 4019
A: PO Box 122 Margate QLD 4019
P: 07 3897 5700
F: 07 3811 6480
E: info@ecb.com.au
W: ecb.com.au
W: customalloy.com.au



We value your comments

Dear Fitter,

ECB would like to know how you went with the installation of this product. We value your comment and may need to contact you to clarify some details so please complete your contact details clearly.

We would appreciate if you could complete as many of the following details as possible.

Your Name:	Your contact No.
Product Part No.	Product Invoice No.
Product Description:	Make, model, and year of vehicle:
Product Work Order No.	Company your from/Company product purchased from:

Date of Fitment: ___ / ___ / ___

Was the fitting hardware supplied complete? Yes No

If no what was not supplied

Did the installation go well? Yes No

Please provide comments

Please draw diagrams if you need to.

Post to
Reply Paid 122
PO Box 122
Margate QLD 4019

Email to
info@ecb.com.au

DESPATCH CHECKLIST

8V45SY / NB6V45SY / NBV45SY

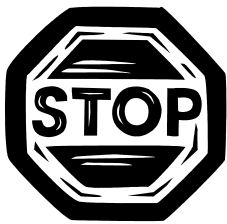
Work Order #		See other side of this page for photos of all mounts
Finish:		
Transport:		
Due Date:		

OC....1 – Pair Steel mounting brackets.

BK....1 – Bolt Kit.

OC....2 – Parking Sensor mounts – **Fitted to Bar**

_____/_____
Wrapper's initials / Checker initials



Is this product “the best it can be” Yes
If **NO** fix before continuing

All parts checked and completed by:

Nut and bolts: _____ Date __/__/__

Order control: _____ Date __/__/__

Final wrap check: _____ Date __/__/__

