



INSTALLATION GUIDE

SUBARU FORESTER 08-20 ON

PN: NBS71SY | NB6S71SY | 8S71SY



NUDGE BAR - SERIES 2 NUDGE BAR - ROO BAR
VEHICLE FRONTAL PROTECTION SYSTEM (VFPS)
FOR AIR BAG & ADR COMPLIANT VEHICLES

INDEX

PAGE 3

Installation Kit

PAGE 4

Stage 1 - Vehicle Testing And Preparation
Stage 2 - Remove Headlight Washer Covers
Stage 3 - Remove Splash Guards

PAGE 5

Stage 4 - Remove Bumper Cover
Stage 5 - Remove Bumper Infill Steel Bracket
Stage 6 - Trim Bumper Infill

PAGE 6

Stage 7 - Mount Fitment
Stage 8 - Mount Fitment

PAGE 7

Stage 9 - Camera
Stage 10 - Inner Bumper
Stage 11 - Refit Bumper

PAGE 8

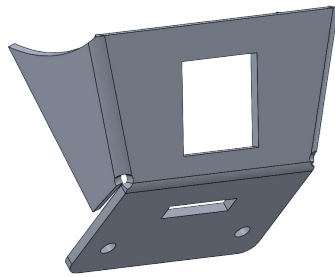
Stage 12 - Trim Outer Cover
Stage 13 - Protection Bar Fitment
Stage 14 - Reconnect Camera

PAGE 9

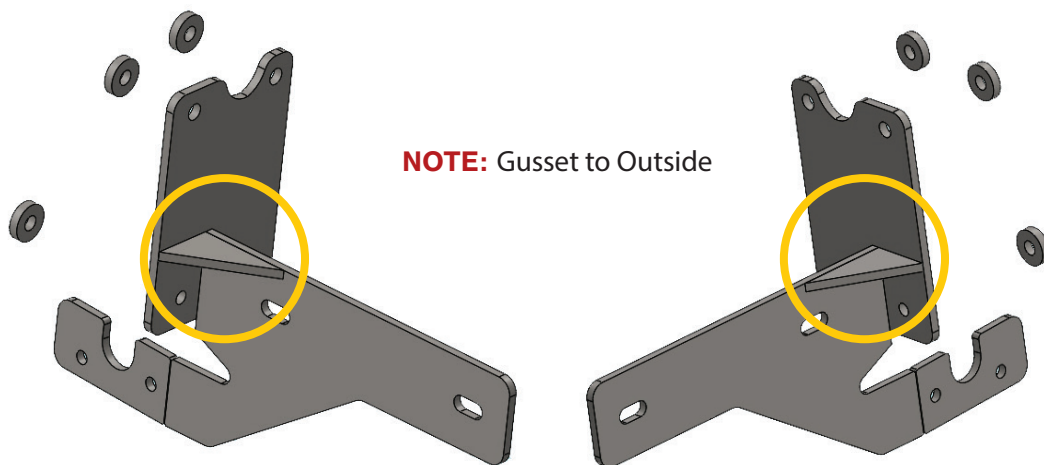
Final Checks

INSTALLATION KIT

1 - Camera Cover (NBS70_VA3A)	14 - 5/16 X1 Flat Washers
6 - Round 25 X 10 X 6 Spacer Washer(25X10X6MS)	10 - M8 Spring Washers
4 - M10 X 1.5 X 40mm Bolts	6 - M8 X 1.25 Nuts
8 - M10 Flat Washers	2 - M5 X 20mm Bolts
4 - M10 Spring Washers	4 - M5 Flat Washers
4 - M10 X 1.5 Nuts	2 - M5 Nyloc Nuts
6 - M8 X 1.25 X 35mm Bolts	2 - 8g X12 Pk Self Drilling Screws
4 - M8 X 1.25 X 30mm Bolts	



Camera Cover (NBS70_VA3A)
In Bolt Kit



Pair Ecb Steel Mounting Brackets
Fitted to Bar

SUBARU FORESTER 08-21 ON

STAGE 1 - VEHICLE PREPARATION

Test drive vehicle to ensure all driver assists are correctly working and to gauge effectiveness.

Park on a flat level surface.

Apply parking brake and lift bonnet.

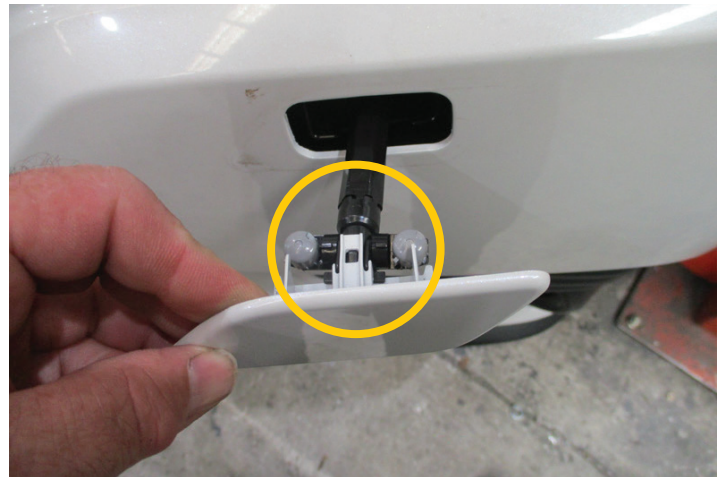
Unwrap ECB Protection Bar and disconnect mounts.
Discard bolts.



STAGE 2 - REMOVE HEADLIGHT WASHER COVERS

Remove headlight washer covers from bumper.
Pull headlight washer out and unclip top clip from washer stalk.

NOTE: Take care not to over extend the washer stalk.



STAGE 3 - REMOVE SPLASH GUARDS

Remove plastic engine splash guard from under vehicle, seventeen (17) x push pull clips and four (4) x 12mm head bolts.



NBS71SY - NB6S71SY - 8S71SY

STAGE 4 - REMOVE BUMPER COVER

Remove six (6) x plastic push pull clips from top grille, ten (10) x plastic push pull clips from under bumper and one (1) x plastic push pull clip (per side) from bumper wing in wheel arch.

Unplug fog lights, washer lines and camera if fitted.

Carefully pull sides of bumper out from vehicle then forward to release the support clips on guard and under headlight.



STAGE 5 - BUMPER COVER REMOVAL

Remove steel mount under the end of chassis rail, four (4) x 10mm head bolts (per side).

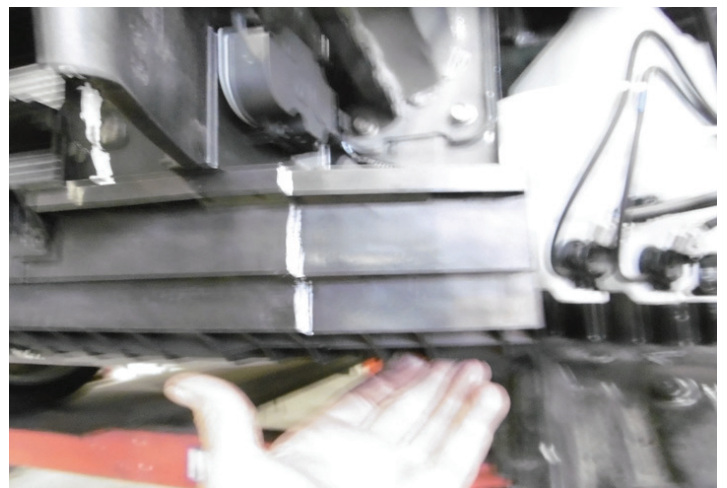
Discard mount.



STAGE 6 - TRIM BUMPER INFILL

Trim 110mm from end lower honeycomb (per side) under shutter grille.

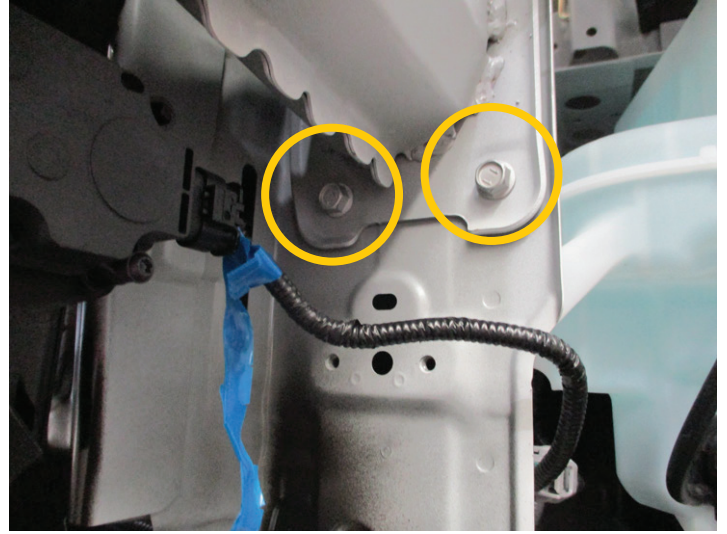
When reinstalling to vehicle further may need to be trimmed to fit around steel mounting bracket.



SUBARU FORESTER 08-21 ON

STAGE 7 - MOUNT FITMENT

Remove two (2) x lower bolts (per side) from end of chassis rail.

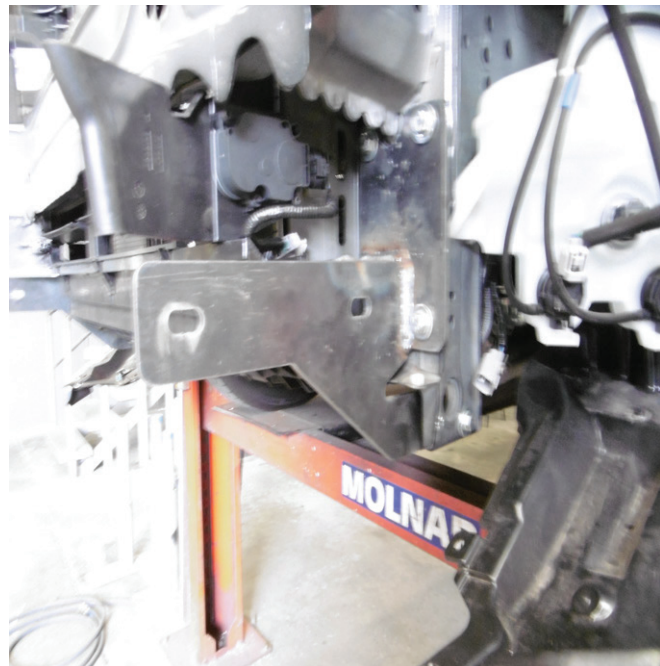


STAGE 8 - MOUNT FITMENT

Fit ECB steel mounting bracket (supplied) onto end of chassis rail using two (2) x M8 x 1.25 x 35mm bolts, spring washers, flat washers and 6mm spacers (supplied).

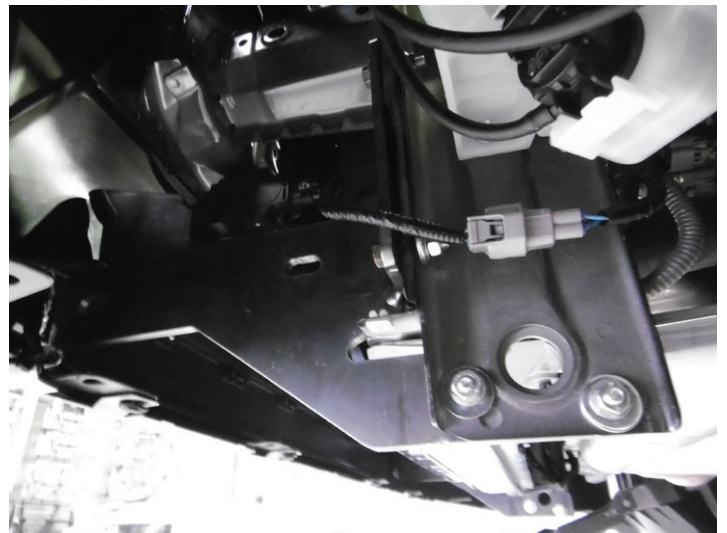
Using steel mounting bracket as a guide, drill lower hole in mount and front hole in tie down point to 8.5mm.

Blow filings clear and treat all exposed metal with a rust inhibitor.



Install one (1) x M8 x 1.25 x 35mm bolt, spring washer, flat washer, 6mm spacer, flat washer and nut (supplied) into drilled hole in chassis rail. Install two (2) x M8 x 1.25 x 30mm bolts, flat washer, spring washer and nuts (supplied) into holes in tie down points.

Align mounts to suit the Protection Bar (Alloy mounting to inside of steel mounts).



NBS71SY - NB6S71SY - 8S71SY

STAGE 9 - CAMERA

Remove camera and housing from rear of grille.

Trim bottom of camera housing (MY21) and top of camera housing on MY19 and relocate into Protection Bar. Align camera on mounting bracket and drill two 5mm holes. Secure with M5 x 20mm bolts, M5 washers and M5 Nyloc nuts (supplied).

Remove the wiring clip from headlight panel for extra length.

Place outer housing over mount, secure with 8g self drilling screws (supplied).



STAGE 10 - INNER BUMPER

Using the contours of the bumper, mark and cut lower bumper for mounts to exit the vehicle.

NOTE: There are two layers of the bumper at this point. The rear cut is hidden by the front skin. The front skin can be removed to cut the rear bumper and refitted after the bumper is refitted to the vehicle to allow the cut to be more accurate.

CAUTION: The cut in the front skin is dependent on the fitment of the mounts to the chassis rail and Protection Bar mount.



STAGE 11 - REFIT BUMPER

Refit bumper to vehicle in reverse of Stage 3.

Do not fit engine splash cover or front side covers at this stage.



SUBARU FORESTER 08-21 ON

STAGE 12 - TRIM OUTER COVER

Trim and refit lower outer covers.



STAGE 13 - PROTECTION BAR FITMENT

Install Protection Bar onto steel mounting brackets using M10x1.5x40mm bolts, M10 flat washers, M10 spring washers and M10x1.5 nuts.

Align protection bar to vehicle.

Tighten all bolts.

Refit engine splash guard and trim around steel mounting bracket.



STAGE 14 - RECONNECT CAMERA

Reconnect camera and test.

FINAL CHECKS

ENSURE NUMBER PLATE IS CLEARLY VISIBLE

Note: When fitting/refitting the licence plate to the vehicle, ensure there is no obstruction to licence plate vision in accordance with local authorities. If required relocate licence plate to an alternate location.

FURTHER VFPS NOTES

1. Do not attach VFPS to the vehicle using anchorages not intended for this purpose (e.g. engine mounting bolts)
2. Do not use this product for any vehicle make or model, other than those specified by the VFPS manufacturer
3. Do not remove the plaque or label from the VFPS
4. Do not modify the structure of the VFPS in any way
5. No accessory or fitment should project forward of the VFPS forward profile

IMPORTANT INFORMATION

Periodically check bolts and nuts for correct tightness, especially if traveling on rough roads.



1800 069 145
WWW.ECB.COM.AU
29 SNOOK ST CLONTARF, QLD 4019

REPLACES: N/A
REVISED: 27.06.24