



INSTALLATION GUIDE

SUBARU OUTBACK 12-20 ON

PN: NBS103SY | NB6S103SY | 8S103SY



NUDGE BAR - SERIES 2 NUDGE BAR - ROO BAR
VEHICLE FRONTAL PROTECTION SYSTEM (VFPS)
FOR AIR BAG & ADR COMPLIANT VEHICLES

INDEX

PAGE 3

Installation Kit

PAGE 4

Stage 1 - Vehicle Testing And Preparation

Stage 2 - Bumper Removal

Stage 3 - Headlight Washers

PAGE 5

Stage 4 - Inner Guard

Stage 5 - Under Body

Stage 6 - Outer Guard

PAGE 6

Stage 7 - Remove Bumper

Stage 8 - Mount Fitment

Stage 9 - Trim Bumper

PAGE 7

Stage 10 - Camera Removal

Stage 11 - Camera Fitment

Stage 12 - Refit Bumper

PAGE 8

Stage 13 - Protection Bar Fitment

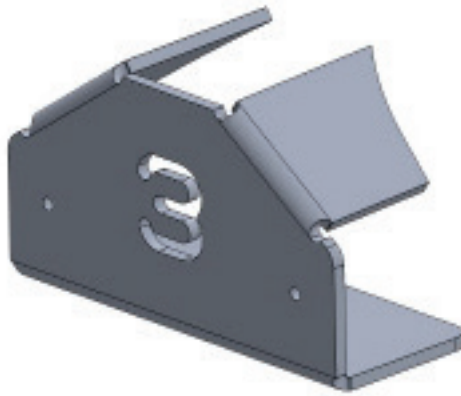
Stage 14 - Camera Connection

PAGE 9

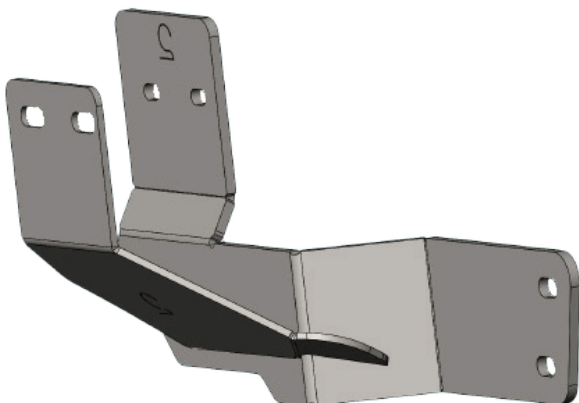
Final Checks

INSTALLATION KIT

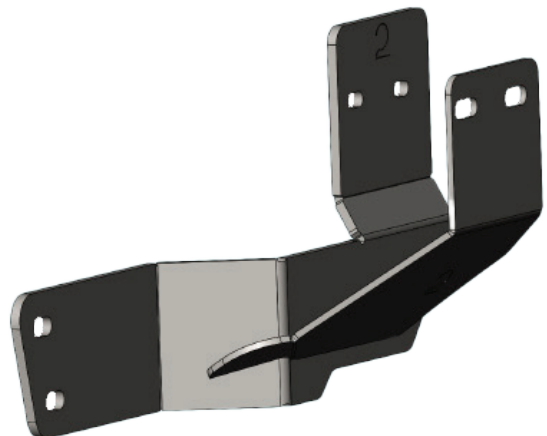
1 - Pair Steel Mounting Brackets	4 - M8 Nyloc Nuts
4 - M10 X 1.5 X 40mm Bolts	2 - M5 X 20mm Button Head Screws
8 - M10 Flat Washers	4 - M5 Flat Washers
4 - M10 Spring Washers	2 - M5 Nyloc Nuts
4 - M10 X 1.5 Nuts	2 - 8g-18 X 25mm Self Drilling Screws
4 - M8 X 1.25 X 100mm Bolts	1 - 300mm Length 10mm Convuluted Tube
8 - 5/16 X 1 1/4 Flat Washers	



Camera Mount Cover
(NBS103_VA3A)



Driver's Side Chassis Mount
(YNBS102SYRH)



Passenger's Side Chassis Mount
(YNBS102SYLH)

SUBARU OUTBACK 12-20 ON

STAGE 1 - VEHICLE PREPARATION

Test drive vehicle to ensure all driver assists are correctly working and to gauge effectiveness.

Park on a flat level surface.

Apply parking brake and lift bonnet.

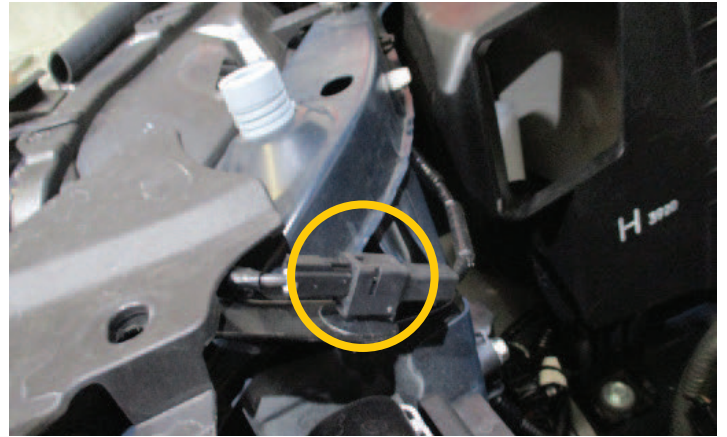
Unwrap ECB Protection Bar and disconnect mounts.
Discard bolts.



STAGE 2 - BUMPER REMOVAL

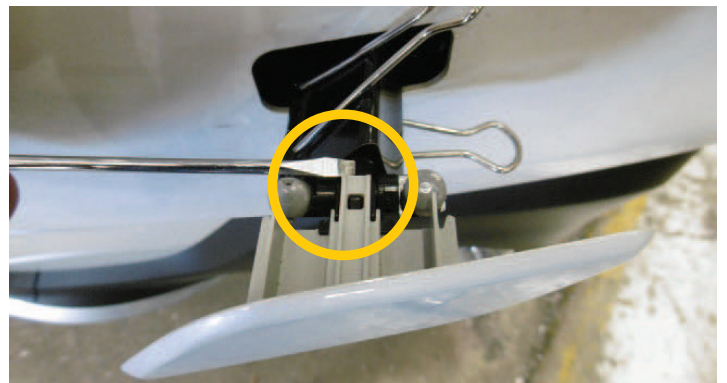
From top of bumper between headlights remove six (6) x push pull clips and two (2) x 10mm head bolts. This includes two (2) x push pull plugs on air intake cover.

Disconnect camera harness and unclip harness from body of car.



STAGE 3 - HEADLIGHT WASHERS

If vehicle is fitted with headlight washers, gently pull away from the bumper and lift top tab to remove.



NBS103SY, NB6S103SY, 8S103SY

STAGE 4 - INNER GUARD

Inner top of wheel arch, remove two (2) x push pull clip per side.



STAGE 5 - UNDER BODY

Under front of bumper remove nine (9) x push pull clips.



STAGE 6 - OUTER GUARD

Pull inner guard rearward and disconnect fog lights.

Gently pull bumper out from sides of vehicle to unclip from guard and forward to unclip from under headlight.



SUBARU OUTBACK 12-20 ON

STAGE 7 - REMOVE BUMPER

Gently remove bumper.

Remove foam bumper infill pad from front of bumper support. Retain for re-fitment.



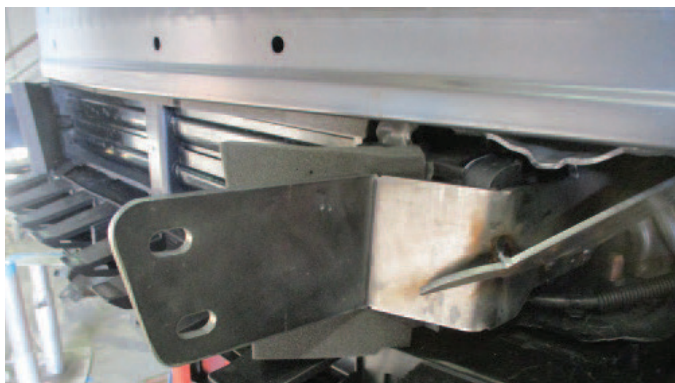
STAGE 8 - MOUNT FITMENT

Install ECB steel mounting brackets, to crash cans and using existing holes secure with two (2) x M8 x 1.25 x 100mm bolts, 5/16 x 1 1/4 flat washers and M8 Nyloc nuts (supplied).

Tighten rear bolt first.

Align mounts and tighten.

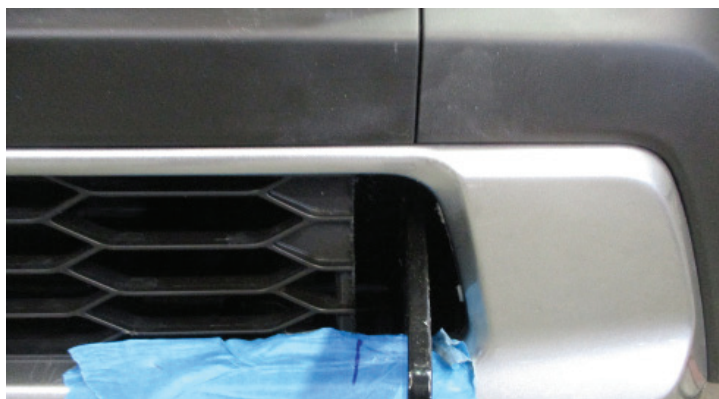
NOTE: Slide the mount up from below the chassis rail and fit rear bolt first.



STAGE 9 - TRIM BUMPER

Use steel mounts as a guide and neatly trim lower grille to allow mounts to protrude.

Use measurement of steel mount as a guide.



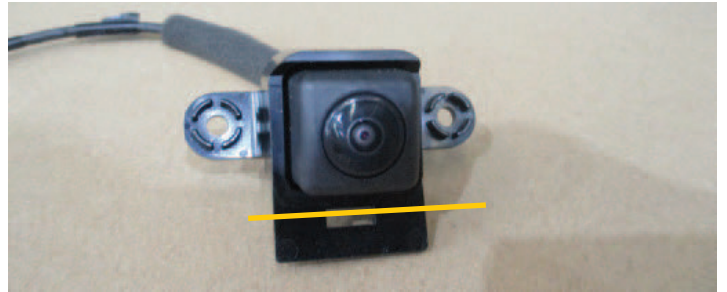
NBS103SY, NB6S103SY, 8S103SY

STAGE 10 - CAMERA REMOVAL

Remove camera and harness from rear of bumper, two (2) x Phillips screws.



Remove locator on bottom of camera.



STAGE 11 - CAMERA FITMENT

FOR SERIES 2 AND TYPE 8

Place camera into Protection Bar.

Using camera as a guide drill 5mm holes into mounting bracket. Use M5 button head screws, flat washers and Nyloc nuts to secure.

Align camera and tighten nuts.



FOR NUDGE BAR

Place camera cover into position secure with self drilling screws.

STAGE 12 - REFIT BUMPER

Reinstall foam infill pad to front of bumper support. Trim as required.

Refit bumper in reverse of steps 3 to 6.

Do not refit air intake cover and grille cover at this stage.



SUBARU OUTBACK 12-20 ON

STAGE 13 - PROTECTION BAR FITMENT

Fit Protection Bar to ECB steel mounts using M10 x 1.5 x 40mm bolts, flat washers, spring washers and nuts (supplied).

Align Protection Bar and tighten all bolts.

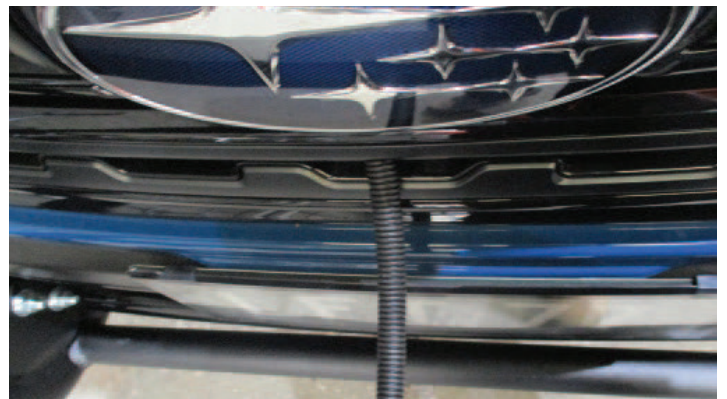


STAGE 14 - CAMERA CONNECTION

Feed camera harness through original camera hole and reconnect.

Replace air intake cover and grille cover.

Place convoluted tubing over exposed harness to protect from the elements.



FINAL CHECKS

ENSURE NUMBER PLATE IS CLEARLY VISIBLE

Note: When fitting/refitting the licence plate to the vehicle, ensure there is no obstruction to licence plate vision in accordance with local authorities. If required relocate licence plate to an alternate location.

FURTHER VFPS NOTES

1. Do not attach VFPS to the vehicle using anchorages not intended for this purpose (e.g. engine mounting bolts)
2. Do not use this product for any vehicle make or model, other than those specified by the VFPS manufacturer
3. Do not remove the plaque or label from the VFPS
4. Do not modify the structure of the VFPS in any way
5. No accessory or fitment should project forward of the VFPS forward profile

IMPORTANT INFORMATION

Periodically check bolts and nuts for correct tightness, especially if traveling on rough roads.



1800 069 145
WWW.ECB.COM.AU
29 SNOOK ST CLONTARF, QLD 4019

REPLACES: 18.08.21
REVISED: 02.07.24