

## 8MA48SY / NB6MA48SY / NBMA48SY

### FITTING INSTRUCTIONS

#### MAZDA BT-50 10/11-03/18 TYPE 8, 63MM SERIES 2 NUDGE BAR AND 76MM NUDGE BAR VEHICLE FRONTAL PROTECTION SYSTEM (VFPS) FOR AIR BAG & ADR COMPLIANT VEHICLES

*Ensure these instructions are left with the vehicle owner and/or operator.*

Check installation hardware before commencing.

**NOTE:** During the installation of these products, the bumper support is removed. Please ensure bumper support is given to the vehicle owner and they are aware they will require to be refitted if the product is removed. **See figure 1** for photo of items to be returned.



**Figure 1** – Bumper support shown in two parts for photo

1. Lift bonnet
2. Remove three push pull clips from top cover on grille. Slide hand under cover and push centre of clip to rear to remove two clips on sides and eight clips holding front of cover. Remove cover. **CAUTION:** Excessive force will damage clips on cover. **See figure 2.**
3. Remove two push pull plastic clips from top outer corners of grille. On bottom of grille, gently press centre of clip down to release clip while pulling grille up and forward. Release all clips on grille. **See figures 3.**
4. From behind grille remove one 10mm head bolt and one push pull plastic clip from inner lower corner of headlight (per side).
5. Under front of wheel arch remove four plastic screw clips and one 7mm head PK screw (per side), where bumper meets guard. Remove four 10mm head bolts from underside of bumper. Gently pull side of bumper out to release from guard clips. Remove bumper cover.
6. Remove plastic air dam from front of bumper support. (four push pull plastic clips)
7. Remove two grey plastic clips from plastic air dam on rear of bumper support and two 15mm head bolts from front of under body steel guard.
8. Remove bumper support, four 15mm head bolts. Return to customer for future refit should protection bar be removed.
9. Remove radiator side air dams; two 8mm head bolts (per side).



**Lighter  
Stronger  
Better!**

A: 29 Snook St Clontarf QLD 4019  
 A: PO Box 122 Margate QLD 4019  
 P: 07 3897 5700  
 F: 07 3811 6480  
 E: info@ecb.com.au  
 W: ecb.com.au  
 W: customalloy.com.au



10. Fit ECB steel mounting bracket (supplied) to front of chassis using four original equipment bolts. **See figure 4.**  
**NOTE:** Should the chassis mount not be level and square, a hammer may need to be used to realign the front of the chassis at the connection points on the vehicle to achieve a level and aligned mount.
11. From inside of chassis rail fit rear of ECB steel mounting bracket using 3/8 x 1 ½ bolt and washer on wire, flat washer, spring washer and nut (supplied) (per side). **See figure 5.**
12. Trim radiator air damn to allow access to rear bolts on protection bar fitment. **See figure 6 and 7.** Refit using original equipment bolts.
13. Refit bumper as per reverse of steps 2 to 5. Refit front of under body steel guard using original equipment bolts.
14. Fit ECB alloy protection bar to ECB steel mounting bracket using four 3/8 x 1 ½ bolts, flat washers, spring washers and nuts(supplied). Align protection bar. **See figures 8, 10 and 12 for front views and figures 9, 11 and 13 for side views. Tighten all bolts.**

**ENSURE NUMBER PLATE IS CLEARLY VISABLE**

**Note:** When fitting/refitting the licence plate to the vehicle, ensure there is no obstruction to licence plate vision in accordance with local authorities. If required relocate licence plate to an alternate location.

**Further VFPS Notes:**

- a) Do not attach VFPS to the vehicle using anchorages not intended for this purpose (e.g. engine mounting bolts).
- b) Do not use this product for any vehicle make or model, other than those specified by the VFPS manufacturer.
- c) Do not remove the plaque or label from the VFPS.
- d) Do not modify the structure of the VFPS in any way.
- e) No accessory or fitment should project forward of the VFPS forward profile.
- f) **ENSURE THESE INSTRUCTIONS ARE LEFT WITH VEHICLE OWNER AND/OR OPERATOR.**

**IMPORTANT INFORMATION**

Periodically check bolts and nuts for correct tightness, especially if travelling on rough roads

**FITTING KIT**

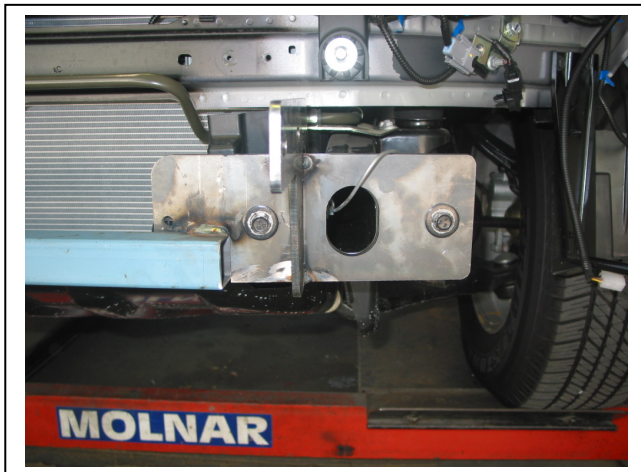
1 – ECB Steel mounting bracket	10 – 3/8 flat washers
4 – 3/8 x 1 ½ bolts	6 – 3/8 spring washers
2 – 3/8 x 1 ½ bolt and washer on 200mm wire	6 – 3/8 nuts



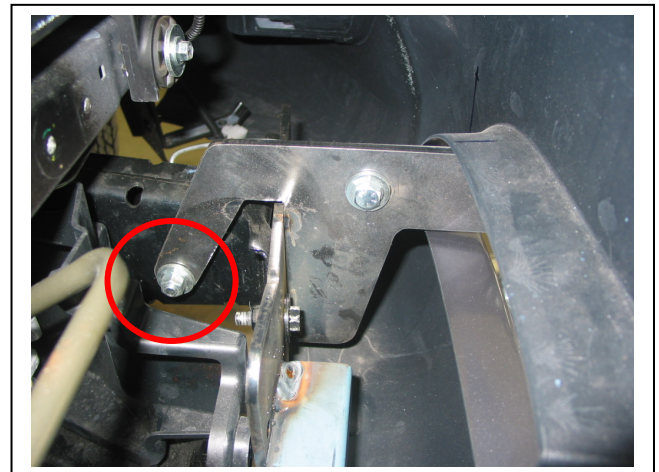
**Figure 2:** Clip on front of grille cover



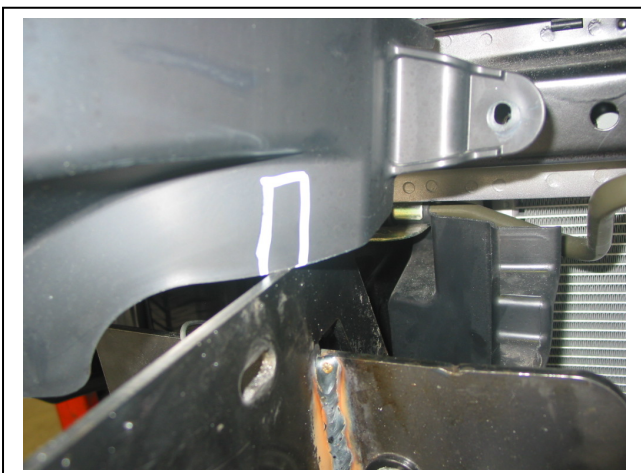
**Figure 3:** Clip on underside of grille



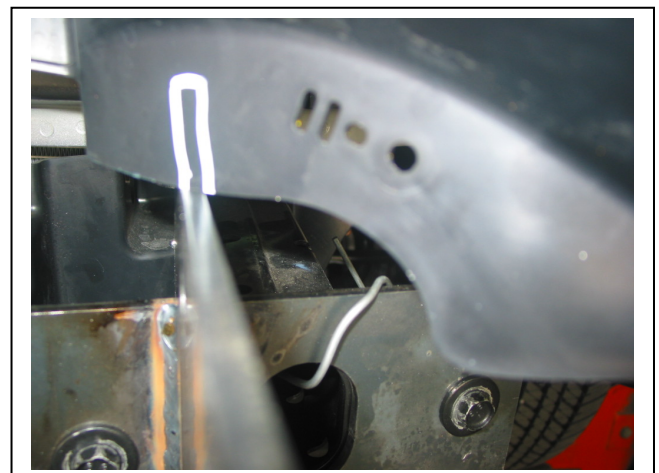
**Figure 4:** Use original equipment bolts in front of chassis. CAUTION: front of chassis rails may need to be adjusted to ensure correct fit.



**Figure 5:** Rear bolt on ECB mount



**Figure 6:** Drivers side air dam trim



**Figure 7:** Drivers side air dam trim



**Figure 9: Nudge Bar front view**



**Figure 10: Nudge Bar side view**



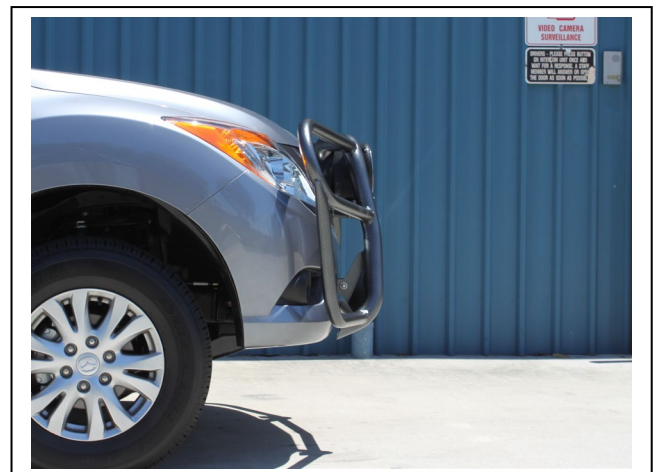
**Figure 11: Series 2 Nudge Bar front view**



**Figure 12: Series 2 Nudge Bar side view**



**Figure 13: Type 8 front view**



**Figure 14: Type 8 side view**

## *Thank you for purchasing an ECB Product*

Please ensure that you read the below and complete the warranty registration.

### **Vehicle Owner / Operator Responsibilities and Product Care** **Important Information**

It is the responsibility of the vehicle owner and operator to ensure all nuts and bolts are checked periodically, especially when travelling on corrugated roads. Please ensure these are tightened as per the steps in the provided fitting instructions.

While ECB products are manufactured from high tensile alloy the vehicle owner / operator must check any steel mounting brackets or steel auxiliary parts for signs of corrosion. If you find any corrosion, please contact ECB Pty Ltd to discuss an appropriate solution – 1800 069 145 or [www.ecb.com.au](http://www.ecb.com.au).

### **Product Care**

#### **Polished Products**

Being a premium mirror polished finish, regular maintenance will be required to keep that iconic ECB shine. We recommend using our own brand of Aluminium Polish. This formula has been tried and tested and in our opinion is the world's best standard.

Directions: Apply a small quantity of Aluminium Polish to a clean soft cloth and rub the metal surface. The longer the rubbing the brighter the surface becomes. Wipe off Aluminium Polish with clean soft cloth. Also suitable for motorised buffing machines. Note: There are more specific details on the polish bottle. Please read before use.

#### **Powder Coated Products**

Our powder coated finishes are very low maintenance. In fact, there is actually very little you will ever need to do for this product. Just clean it as you would your car and it will stay looking good as new.

#### **ECB Aluminium Polish**

When you're looking for that showroom finish look for your polished automotive products, you can depend on the no compromise quality of East Coast Bullbars Aluminium Polish. This specifically designed product is the best polish available and we guarantee that this \$#!+ works. Within our decades of manufacturing polished alloy products, we have trialled a large range of different polishes on the market and believe without a doubt that nothing beats the finish quality of East Coast Bullbars Aluminium Polish.

East Coast Bullbars Aluminium Polish is excellent for use by hand and is ideal for polished bullbars, nudge bar and stainless-steel products. This polish will clean, polish and protect your product from the elements whilst bringing your products back to that showroom finish look.





**Lighter  
Stronger  
Better!**

A: 29 Snook St Clontarf QLD 4019  
 A: PO Box 122 Margate QLD 4019  
 P: 07 3897 5700  
 F: 07 3811 6480  
 E: info@ecb.com.au  
 W: ecb.com.au  
 W: customalloy.com.au



## Warranty Registration

Please Register your purchase online [www.ecb.com.au/warranty-registration](http://www.ecb.com.au/warranty-registration)  
 If you have any questions, please contact our national office on 1800 069 145 or  
[www.ecb.com.au](http://www.ecb.com.au)

Or post the below information back to ECB, PO Box 122, Margate, QLD 4019.

### Contact Details

Name:	
Address:	
Email:	
Phone:	

### Purchase Details

Purchased from:	
Date of Purchase:	

### Product Details

(You can find this information on the silver label of your ECB Product)

Part Number:	
Work Order Number:	

By submitting this registration, you automatically subscribe to ECB's mail outs. You can unsubscribe at any time.



**Lighter  
Stronger  
Better!**

A: 29 Snook St Clontarf QLD 4019  
 A: PO Box 122 Margate QLD 4019  
 P: 07 3897 5700  
 F: 07 3811 6480  
 E: info@ecb.com.au  
 W: ecb.com.au  
 W: customalloy.com.au



**We value your comments**

Dear Fitter,

ECB would like to know how you went with the installation of this product. We value your comment and may need to contact you to clarify some details so please complete your contact details clearly.

We would appreciate if you could complete as many of the following details as possible.

<b>Your Name:</b>	<b>Your contact No.</b>
<b>Product Part No.</b>	<b>Product Invoice No.</b>
<b>Product Description:</b>	<b>Make, model, and year of vehicle:</b>
<b>Product Work Order No.</b>	<b>Company your from/Company product purchased from:</b>

**Date of Fitment:** \_\_\_/\_\_\_/\_\_\_

Was the fitting hardware supplied complete?      Yes      No  
     

If no what was not supplied

---



---

Did the installation go well?      Yes      No  
     

Please provide comments

---



---



---

Please draw diagrams if you need to.

**Post to**  
 Reply Paid 122  
 PO Box 122  
 Margate QLD 4019

**Email to:**  
 info@ecb.com.au



**Lighter  
Stronger  
Better!**

A: 29 Snook St Clontarf QLD 4019  
A: PO Box 122 Margate QLD 4019  
P: 07 3897 5700  
F: 07 3811 6480  
E: [info@ecb.com.au](mailto:info@ecb.com.au)  
W: [ecb.com.au](http://ecb.com.au)  
W: [customalloy.com.au](http://customalloy.com.au)





**Lighter  
Stronger  
Better!**

A: 29 Snook St Clontarf QLD 4019  
A: PO Box 122 Margate QLD 4019  
P: 07 3897 5700  
F: 07 3811 6480  
E: info@ecb.com.au  
W: ecb.com.au  
W: customalloy.com.au



## DESPATCH CHECKLIST 8MA48SY / NB6MA48SY / NBMA48SY

Work Order #		<b>See other side off this page for photos of all mounts</b>
Finish:		
Transport:		
Due Date:		

- 1 – Steel mounting bracket.
- 1 – Bolt Kit.



Is this product “the best it can be” Yes \_\_\_\_\_ / \_\_\_\_\_  
Wrapper's initials / Checker initials

If **NO** fix before continuing

All parts checked and completed by:

Nut and bolts: \_\_\_\_\_ Date \_\_\_ / \_\_\_ / \_\_\_

Order control: \_\_\_\_\_ Date \_\_\_ / \_\_\_ / \_\_\_

Final wrap check: \_\_\_\_\_ Date \_\_\_ / \_\_\_ / \_\_\_



**Lighter  
Stronger  
Better!**

A: 29 Snook St Clontarf QLD 4019  
A: PO Box 122 Margate QLD 4019  
P: 07 3897 5700  
F: 07 3811 6480  
E: info@ecb.com.au  
W: ecb.com.au  
W: customalloy.com.au

