



**Strongest Built
Australian Made
Lifetime Warranty**

PN: NBHU74SY



Fitting Guide & Owners Manual

HYUNDAI STARIA

6/21on

76mm NUDGE BAR
VEHICLE FRONTAL PROTECTION SYSTEM (VFPS)
FOR AIR BAG & ADR COMPLIANT VEHICLES

Index

Pages 3-5

ECB's Benefits
Product Care

Pages 6-7

Stage 1 - Vehicle preparation
Stage 2 - Inner guard clips
Stage 3 - Underbelly clips
Stage 4 - Bumper supports
Stage 5 - Remove camera
Stage 6 - Parking sensors

Pages 8-9

Stage 7 - Wiring
Stage 8 - Steel mount fitment
Stage 9 - Mount Alignment
Stage 10 - Bumper trim
Stage 11 - Bumper foam support trim
Stage 12 - Refit bumper

Pages 10-11

Stage 13 - Parking sensors
Stage 14 - Camera installation
Stage 15 - Protection bar fitment
Stage 16 - Protection bar alignment
Stage 17 - Connect, check and test
Final Checks

Pages 12-13

Installation Kit
Finished Product
Warranty Registration

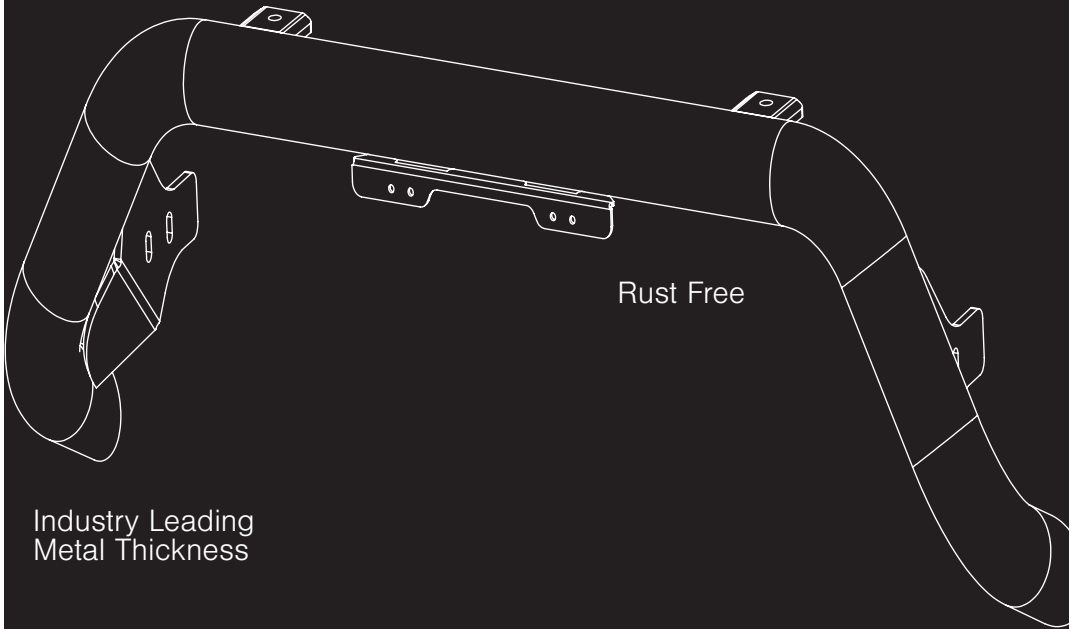
Pages 14-15

Notes

The Features of ECB

Unmatched
Strength

Hi-Tensile Alloy



Rust Free

Industry Leading
Metal Thickness

Fully Welded
Construction

ECB's Benefits

Built to Perform - Not to a Price

ECB are proud to claim that their channels are not jigsaw puzzles that are bolted together, or even multiple sections welded together. Where any welding is required, it is done to the highest standards by qualified welders, not machines.

Anti-Corrosive Nature of Alloy

The composition of ECB's alloy has a very high resistance to corrosion. Rust not only looks unappealing but greatly reduces the strength of the metal. Rust can and will weaken the structural integrity of a steel bullbar effectively rendering it useless over time.

Australian Made

Established in 1971, we utilise decades of experience designing, engineering and building products in Australia to suit Australian conditions. We can ensure the best quality controls and help support the local economy and employ over 90 proud Australians.

Weight Saving Benefits

An ECB alloy bullbar is typically half the weight of a steel bullbar. Unnecessary suspension upgrades are not required. The reduced weight also contributes to increased fuel economy and less wear and tear on tyres, suspension and braking components.

Welds That Work

ECB uses only the strongest welds and welding techniques to ensure every product is as structurally sound as possible. MIG (Metal Inert Gas) welding techniques are employed ensuring the welds are as thick as the thickest section of alloy's being joined together.

Lifetime Warranty

ECB provide a lifetime warranty and consumer guarantee on all of our manufactured products. This guarantee highlights the confidence in our ability and provides complete peace of mind for your purchase for the lifetime you own your vehicle.

Product Care

Polished Products

Being a premium mirror polished finish, regular maintenance will be required to keep that iconic ECB shine. We recommend using our own brand of Aluminium Polish. This formula has been tried and tested and in our opinion is the world's best standard.

Directions: Apply a small quantity of Aluminium Polish to a clean soft cloth and rub the metal surface. The longer the rubbing the brighter the surface becomes. Wipe off Aluminium Polish with clean soft cloth. Also suitable for motorised buffing machines. **Note: There are more specific details on the polish bottle. Please read before use.**

Powdercoated Products

Our powdercoated finishes are very low maintenance. In fact there is actually very little you will ever need to do for this product. Just clean it as you would your car and it will stay looking good as new.

ECB Aluminium Polish

When you're looking for that showroom finish look for your polished automotive products, you can depend on the no compromise quality of East Coast Bullbars Aluminium Polish. This specifically designed product is the best polish available and we guarantee that this \$#!+ works. Within our decades of manufacturing polished alloy products we have trialed a large range of different polishes on the market and believe without a doubt that nothing beats the finish quality of East Coast Bullbars Aluminium Polish.

East Coast Bullbars Aluminium Polish is excellent for use by hand and is ideal for polished bullbars, nudge bar and stainless steel products. This polish will clean, polish and protect your product from the elements whilst bringing your products back to that showroom finish look.



NBHU74SY

Stage 1

- Test drive vehicle to ensure all driver assists are correctly working and to gauge effectiveness. Park on a flat level surface.
- Apply parking brake and lift bonnet.
- Unwrap ECB Protection Bar and disconnect mounts. Discard bolts.
- Ensure these instructions are left with the vehicle owner / operator.



Stage 2

- Remove one (1) 10mm head screw from inner top wheel arch per side.
- Remove three (3) push pull clips from inside of wheel arch per side.



Stage 3

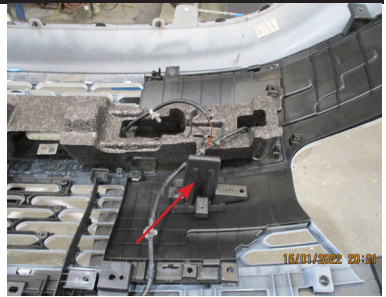
- From front of underbelly guard near bumper, remove five (5) push pull clips.
- Carefully pull outer wing away from side of vehicle, disconnecting wiring harness in same process (driver side).



HYUNDAI STARIA 6/21 on

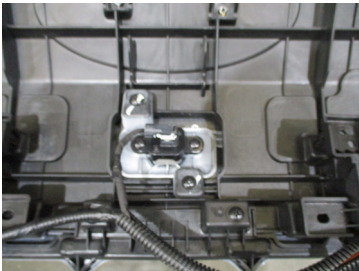
Stage 4

- Once bumper is removed from vehicle remove foam support.
- Remove bumper locators by releasing three (3) Phillips head screws per side.



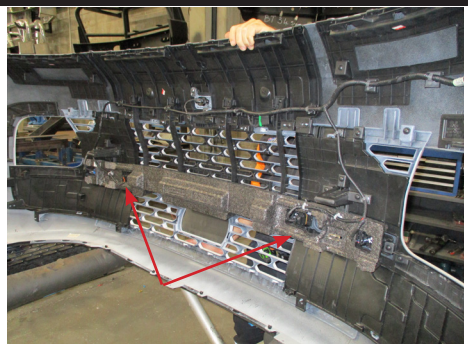
Stage 5

- Disconnect camera wiring from back of camera.
- Remove camera from camera housing, two (2) Phillips head screws.



Stage 6

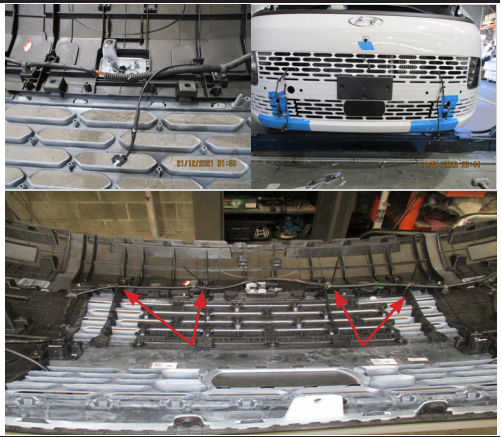
- Disconnect the two (2) centre parking sensors from bumper and remove for refitment, two (2) Phillips head screws.
- Unclip spear head clips from harness to allow extra length on wiring.



NBHU74SY

Stage 7

- Where camera wiring meets main loom, split convoluted tubing to allow more camera wiring outside of loom. Using convoluted tubing supplied, retape loom to extend to maximum length.
- Repeat step for sensor harness.
- Ziptie loom into place with zip ties (supplied)
- Push sensor and camera harness through grille before refitment of bumper.



Stage 8

- Fit ECB steel mounting brackets to vehicle, use outer edge of bumper reinforcement as a guide.
- Secure ECB steel mount using M10 x 1.5 x 85mm bolts, flat washers, spring washers, nuts and steel backing plates
- Ensure that the two (2) inside mounting bolts face outwards (per side)



Stage 9

- Measure inside measurement of protection bar to get correct distance for outside measurement of ECB steel mounts.
- Ensure mounts are central to vehicle.
- Align and tighten all bolts.



HYUNDAI STARIA 6/21 on

Stage 10

- Using steel mounts as a guide trim bumper.
- Tape around area to be trimmed to avoid any damage to bumper.



Stage 11

- Trim foam bumper support to fit around mounts.
- Refit to rear of bumper skin



Stage 12

- Refit bumper in reverse as per steps 2 and 3.
- Pull camera and sensor wiring harness through front of grille before refitting bumper.



NBHU74SY

Stage 13

- As per photos trim sensor housing to refit into protection bar. (careful not to damage sensors)
- Be sure to clean alloy sensor mounting points on protection bar using Isopropyl alcohol.
- Using double sided tape fit correct sensor into protection bar (left and right).



Stage 14

- Fit camera into alloy camera mount using two (2) M5 x 20mm bolts, flat washers and nyloc nuts.
- Using two (2) self drilling screws secure camera cover into place.



Stage 15

- Fit ECB protection bar to steel mounts using M10 x 1.5 x 40mm bolts, flat washers, spring washers and nuts, finger tighten only.



HYUNDAI STARIA 6/21on

Stage 16

- Align protection bar with vehicle and tighten all bolts.
- Reconnect sensors and camera.
- Place blanking caps into original camera and sensor bumper holes.



Stage 17

- Ensure camera and sensors are working correctly.

Final Checks

Ensure Number Plate is Clearly Visible

Note: When fitting/refitting the licence plate to the vehicle, ensure there is no obstruction to licence plate vision in accordance with local authorities. If required relocate licence plate to an alternate location.

Further VFPS Notes

1. Do not attach VFPS to the vehicle using anchorages not intended for this purpose (e.g. engine mounting bolts).
2. Do not use this product for any vehicle make or model, other than those specified by the VFPS manufacturer.
3. Do not remove the plaque or label from the VFPS.
4. Do not modify the structure of the VFPS in any way.
5. No accessory or fitment should project forward of the VFPS forward profile.
6. **Ensure these instructions are left with the vehicle owner and/or operator.**

Important Information

Periodically check bolts and nuts for correct tightness, especially if traveling on rough roads.

Installation Kit

Installation Kit

1 - Pair of steel mounts	2 - M5 x 20mm bolts
4 - Steel backing plates	4 - M5 flat washers
1 - Camera cover	2 - M5 nyloc nuts
8 - M10 x 85mm x 1.5mm bolts	2 - 8-18 x 12mm self drilling screws
4 - M10 x 40mm x 1.5mm bolts	2 - 20mm sensor blanking caps
24 - M10 flat washers	1 - 19mm camera blanking cap(5522)
12 - M10 spring washers	2 - 300mm length 10mm convoluted tubing
12 - M10 nuts	4 - 150mm cable ties

Finished Product



Warranty Registration

Contact Details

Name: _____

Address: _____

Product: **NBHU74SY**

Email: _____

Phone: _____

Work Order Number: _____

You can find this on the silver label
of your ECB product.

By submitting this registration you automatically subscribe to ECB's mail outs. You
can unsubscribe at any time.

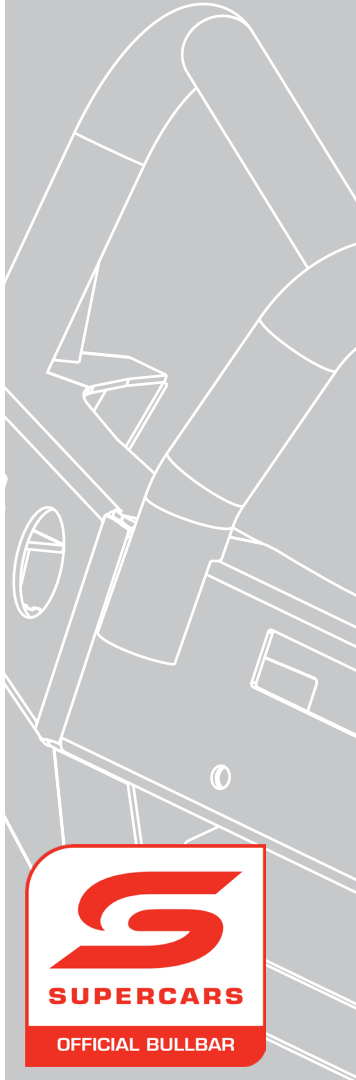
Register Online

For online registration please go online to www.ecb.com.au/warranty-registration
If you have any questions please contact our national office on 1800 069 145 or
www.ecb.com.au.



PN: NBHU74SY
Please post to PO Box 122,
Margate QLD 4019

REPLACES: N/A
REVISED: 20.04.22



1800 069 145
www.ecb.com.au

Strongest Built Australian Made Lifetime Warranty

29 Snook St, Clontarf QLD 4019
PO Box 122, Margate QLD 4019