



**Lighter
Stronger
Better!**

**Strongest Built
Australian Made
Lifetime Warranty**

PN:EAM116SY

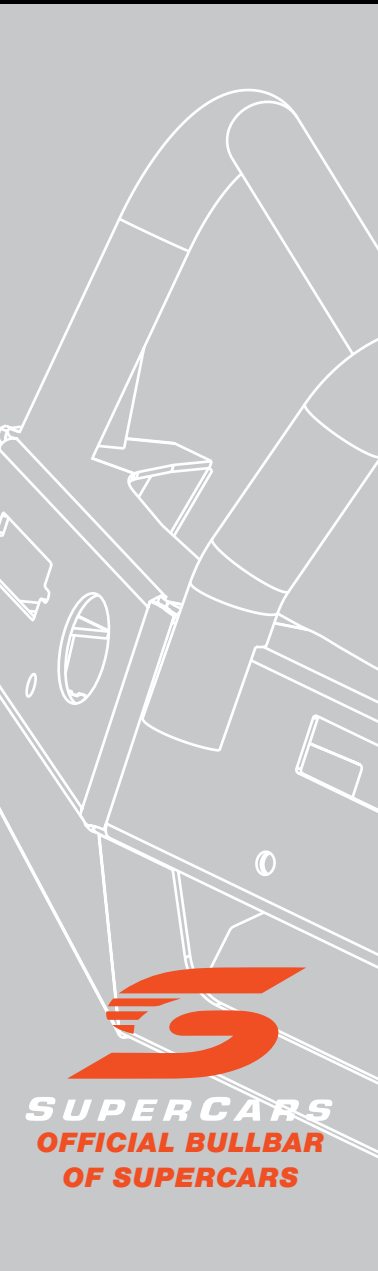


Fitting Guide & Owners Manual

MITSUBISHI PAJERO

SPORT 11/19 on

WINCH COMPATIBLE BIG TUBE BAR WITH BUMPER LIGHTS
VEHICLE FRONTAL PROTECTION SYSTEM (VFPS)
FOR AIR BAG & ADR COMPLIANT VEHICLES



SUPERCARS
OFFICIAL BULLBAR
OF SUPERCARS

Index

Pages 3-5

ECB's Benefits
Product Care

Pages 6-7

Stage 1 - Vehicle Testing and Preparation
Stage 2 - Radiator cover
Stage 3 - Grille removal
Stage 4 - Chrome moulding removal
Stage 5 - Disconnect wiring
Stage 6 - Bumper removal

Pages 8-9

Stage 7 - Bumper removal
Stage 8 - Bumper support removal
Stage 9 - Underbelly guards
Stages 10 to 11 - Bottle replacement
Stage 12 - Steel mount installation

Pages 10-11

Stage 13 - Winch mount and winch installation
Stage 14 to 15 - Camera relocation
Stage 16 - Parking sensor relocation
Stage 17 - Indicator / Park installation
Stage 18 - Clip lock trim

Pages 12-13

Stage 19 - Light wiring
Stage 20 - Bumper light removal
Stage 21 - Bumper cut
Stage 22 - Bumper light infill installation
Stage 23 - Refit bumper
Stage 24 - Fit Protection bar

Pages 14-15

Stage 25 - Fog light installation
Stage 26 - Side underbelly fitment
Stage 27 - Inner guards
Stage 28 - Connect, check and test

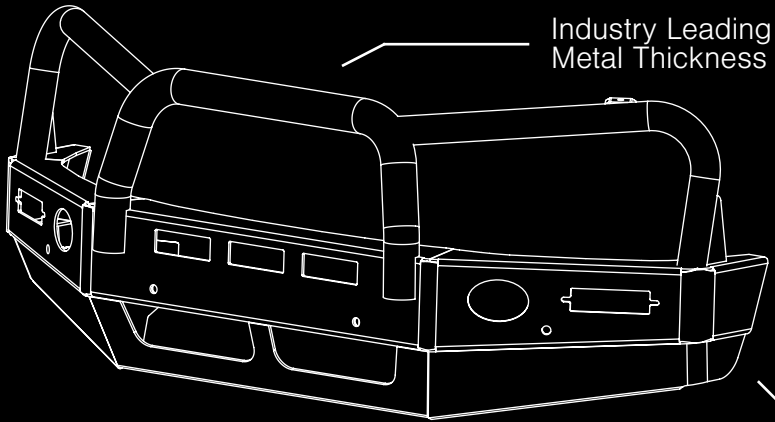
Pages 16-17

Final Checks
Installation Kit

Pages 18-19

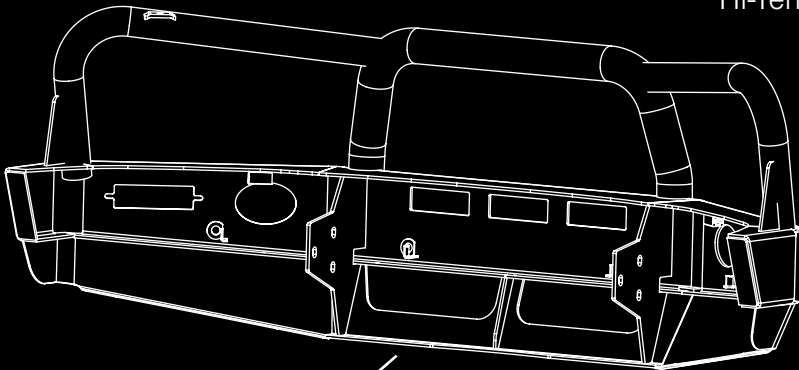
Finished Product
Warranty Registration

The Features of ECB



Industry Leading
Metal Thickness

6mm Thick
Hi-Tensile Alloy



Unmatched
Strength

Fully Welded
Construction

ECB's Benefits

Built to Perform - Not to a Price

ECB are proud to claim that their channels are not jigsaw puzzles that are bolted together, or even multiple sections welded together. Where any welding is required, it is done to the highest standards by qualified welders, not machines.

Anti-Corrosive Nature of Alloy

The composition of ECB's alloy has a very high resistance to corrosion. Rust not only looks unappealing but greatly reduces the strength of the metal. Rust can and will weaken the structural integrity of a steel bullbar effectively rendering it useless over time.

Australian Made

Established in 1971, we utilise over 46 years of experience designing, engineering and building products in Australia to suit Australian conditions. We can ensure the best quality controls and help support the local economy and employ over 90 proud Australians.

Weight Saving Benefits

An ECB alloy bullbar is typically half the weight of a steel bullbar. Unnecessary suspension upgrades are not required. The reduced weight also contributes to increased fuel economy and less wear and tear on tyres, suspension and braking components.

Welds That Work

ECB uses only the strongest welds and welding techniques to ensure every product is as structurally sound as possible. MIG (Metal Inert Gas) welding techniques are employed ensuring the welds are as thick as the thickest section of alloy's being joined together.

Lifetime Warranty

ECB provide a lifetime warranty and consumer guarantee on all of our manufactured products. This guarantee highlights the confidence in our ability and provides complete peace of mind for your purchase for the lifetime you own your vehicle.

Product Care

Polished Products

Being a premium mirror polished finish, regular maintenance will be required to keep that iconic ECB shine. We recommend using our own brand of Aluminium Polish. This formula has been tried and tested and in our opinion is the world's best standard.

Directions: Apply a small quantity of Aluminium Polish to a clean soft cloth and rub the metal surface. The longer the rubbing the brighter the surface becomes. Wipe off Aluminium Polish with clean soft cloth. Also suitable for motorised buffing machines.

Note: There are more specific details on the polish bottle. Please read before use.

Powdercoated Products

Our powdercoated finishes are very low maintenance. Infact there is actually very little you will ever need to do for this product. Just clean it as you would your car and it will stay looking good as new.

ECB Aluminium Polish

When you're looking for that showroom finish look for your polished automotive products, you can depend on the no compromise quality of East Coast Bullbars Aluminium Polish. This specifically designed product is the best polish available and we guarantee that this \$#!+ works. With over 40 years of manufacturing polished alloy products we have trialed a large range of different polishes on the market and believe without a doubt that nothing beats the finish quality of East Coast Bullbars Aluminium Polish.

East Coast Bullbars Aluminium Polish is excellent for use by hand and is ideal for polished bullbars, nudge bar and stainless steel products. This polish will clean, polish and protect your product from the elements whilst bringing your products back to that showroom finish look.



EAM116SY

Stage 1

- Test drive vehicle to ensure all driver assists are correctly working and to gauge effectiveness. Park on a flat level surface.
- Apply parking brake and lift bonnet.
- Unwrap ECB Protection bar and disconnect mounts. Discard bolts.
- Ensure these instructions are left with the vehicle owner and/or operator.



Stage 2

- Remove eleven (11) plastic screw clips from top of radiator cover.
- Remove radiator cover.



Stage 3

- Remove one (1) plastic screw clip beside headlight (per side). Gently pull forward on lower grille to release clips from bumper and remove grille.



Mitsubishi Pajero Sport 11/19 on

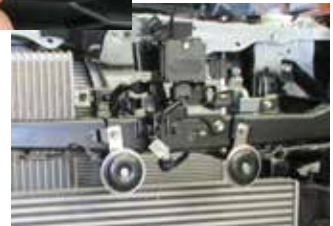
Stage 4

- Remove outer chrome infill's (if fitted) or coloured infill from bumper. Gently pull on corner to release clips once removed.
- From under infill, remove one (1) 10mm head bolt.
- Remove number plate cover one (1) Phillips head screw and unclip sides from lower grille. Do not replace.



Stage 5

- In top grille opening, remove three (3) 10mm head bolts.
- From behind cover plates, disconnect three (3) wiring harness plugs from centre of bumper support.



Stage 6

- Remove one (1) push/pull clip from top inner guard and three (3) 10mm head bolts from under outer bumper.
- Remove two (2) push pull clips from underside front of inner guard (per side).
- Gently pull bumper sides away from vehicle to release from clips and remove bumper.



EAM115SY

Stage 7

- Remove vertical bumper stays, three (3) 10mm head bolts (per side).



Stage 8

- Remove six (6) 14mm head bolts from front cross member and remove bumper reinforcement.



Stage 9

- Remove metal under belly guard, four (4) 12mm head bolts.
- Retain for refitment.



Mitsubishi Pajero Sport 11/19 on

Stage 10

- Remove three (3) push pull clips from join line on guard liner and remove front of guard liner.
- Disconnect harness to water bottle, disconnect hose and drain. Remove filler tube from top of bottle.
- Remove three (3) 12mm head bolts.
- Remove bottle.



Stage 11

- Carefully remove motor and all rubber seals from the original washer bottle. Place all parts into washer bottle (supplied) using fittings from original bottle.
- On inner side of bottle, place support bracket (supplied) on bottle using M8 x 16mm bolt, spring washer and flat washer (supplied).
- Fit bottle to vehicle in original position using two (2) M8 x 1.25 x 55mm bolts, spring washers and flat washers (supplied).
- For inner bracket to body, use M8 x 1.25 x 30mm bolt, flat washer, spring washer and 25mm x 6mm spacer (supplied). **Tighten all bolts.**



Stage 12

- Attach ECB steel mounting brackets (supplied) over crossmember to outside of chassis rail. Attach to chassis rail using M10 x 1.25 x 40mm bolt, flat washer and spring washer (supplied) for front hole into captive nut.
- For centre hole use M10 x 1.5 x 100mm bolt, flat washers, spring washer and nut (supplied) and 10NB x 58mm tube spacer.
- On drivers side in rear hole use M10 x 1.25 x 40mm bolt, flat washers, spring washer and nut (supplied).
- On passenger side, use M10 x 1.5 x 50mm bolt, flat washer, spring washer and nut with 10NB x 15mm tube spacer (supplied) between mount and chassis rail into lower hole, just above the tow hook.



EAM116SY

Stage 13

- Fit winch cradle between steel mounts and fix with M10 x 1.25 x 40mm bolts, flat washers, spring washers and nuts in side holes.
- Fit 10mm spacer bar at rear and fix with M10 x 1.25 x 40mm bolts, spring washers and flat washers (supplied) in outer holes. In inner holes use M10 x 1.25 x 40mm bolts, spring washers and flat washers with nuts on 300mm wire (supplied).
- When all bolts are fitted, align mount central to front of vehicle and **tighten all bolts.**
- Fit winch and fairlead as per manufactures instructions.



Stage 14

- Remove camera and harness from bumper, two (2) Phillips head screws. Retain for fitment into protection bar.



Stage 15

- Secure camera to mounting bracket (supplied) using two (2) M5 x 20mm bolts, flat washer and nyloc nuts (supplied).
- Secure into protection bar using two (2) M6 x 25mm bolts, flat washer and nyloc nuts (supplied).
- Align camera ensuring it is centered in hole and **TIGHTEN ALL BOLTS.**



Mitsubishi Pajero Sport 11/19 on

Stage 16

- Remove parking sensor and fog light harness from bumper and place into protection bar.
- Secure harness in protection bar with zip ties (supplied).
- NOTE: Harness may need to be split for wiring to meet the parking sensors. Where required cover wiring with electrical tape.



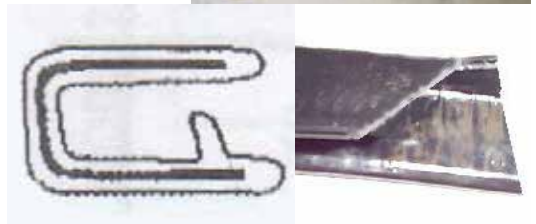
Stage 17

- Fit ECB LED indicator / park lights into protection bar as per instructions supplied with the LED indicator kit.
NOTE: Ensure park light is to top.



Stage 18

- Attach 2500mm length 6mm clip lock trim (supplied) to top of ECB protection bar. NOTE: Trim off lower edge on an angle so trim will sit flush with end of protection bar.
- Attach 180mm lengths of 6mm clip lock trim (supplied) to edges of fairlead cut out in skirt.



EAM116SY

Stage 19

- Splice ECB wiring harness into wiring harness behind headlight using cable locks (supplied). Ensure harness is clear of sharp edges and moving parts.
- Install ECB quick click wiring harnesses (supplied) between disconnected harness and fog lights on vehicle, ensuring clearance from sharp edges and moving parts.

Stage 20

- Remove indicator / fog light from bumper, four (4) phillips head screws (each side).



Stage 21

- Using sharp scissors, carefully cut out template supplied with these instructions. As printers vary, check measure template to ensure correct sizing.
- Using template provided, mask area to be cut to avoid damage.
- Mark and cut bumper using jigsaw, hack saw or similar. CAUTION: Double check all marked lines before trimming.
- NOTE: trim chrome trim as well as bumper to correct size.
- Attach 600mm lengths of 3mm clip lock trim (supplied) to trimmed bumper.



Mitsubishi Pajero Sport 11/19 on

Stage 22

- Place indicator / bumper light infills (supplied) into rear of bumper.
- Use M6 x 16mm bolt, washers and nyloc nut (supplied) to secure infill to bumper. Tuck other end under bumper trim and over locator.



Stage 23

- Refit bumper as per reverse of steps 2 and 3.

NOTE: Chrome trim in photo has not been cut as vehicle was returned to standard after photos.



Stage 24

- Fit protection bar onto steel mounting brackets and fix with M12 x 1.75 x 40mm bolts, flat washers, spring washers and nuts (supplied).
- Align protection bar to front of vehicle and **tighten all bolts.**
- Unplug wiring loom from bonnet stay for more extension and plug in electrics. Zip tie (supplied) harness away from any moving parts or sharp edges.
- Refit grille using original equipment.



EAM116SY

Stage 25

- Attach ECB bumper lights to protection bar. Place M6 x 20mm bolts, spring washers (supplied) through light mount from inside and attach nut to top. Slide assembly into light mount in Protection bar and centralize light to hole. **TIGHTEN FIRM ONLY.**
- Install bumper light surrounds (supplied) to fog light and winch openings. Large side of surround to inside of opening on lights and to rounded side of winch opening.



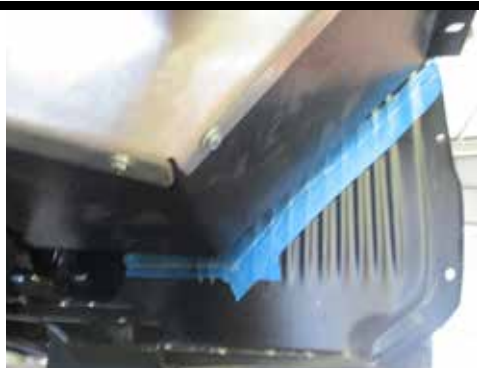
Stage 26

- Join side under belly guards with four (4) M6 x 20mm bolts, flat washers and nyloc nuts (supplied).
- Fit side under body guards using two (2) M6 x 20mm bolts, flat washers and nyloc nuts (supplied) in front holes.
- Use one (1) M6 x 30mm bolt, flat washers and nyloc nut (supplied) in rear wing of channel.
- Use one (1) M6 x 30mm bolt, flat washers and nyloc nut (supplied) in lower hole in steel mount.
- Ensure all bolts are in place before tightening.



Stage 27

- Refit inner guard liner with original equipment and trim inner guard to fit neatly on under body guard and fix with three (3) self drilling 8-18 x 25mm screws (supplied).



Mitsubishi Pajero Sprot 11/19 on

Stage 28

- Connect indicator / DRL / park lights, bumper lights, camera, sonar and parking sensors. Check for correct operation.
- Test drive vehicle to ensure parking sensors and driver aids are working correctly.

Final Checks

Ensure Number Plate is Clearly Visible

Note: When fitting/refitting the licence plate to the vehicle, ensure there is no obstruction to licence plate vision in accordance with local authorities. If required relocate licence plate to an alternate location.

Further VFPS Notes

1. Do not attach VFPS to the vehicle using anchorages not intended for this purpose (e.g. engine mounting bolts).
2. Do not use this product for any vehicle make or model, other than those specified by the VFPS manufacturer.
3. Do not remove the plaque or label from the VFPS.
4. Do not modify the structure of the VFPS in any way.
5. No accessory or fitment should project forward of the VFPS forward profile.
6. **Ensure these instructions are left with the vehicle owner and/or operator.**

Important Information

Periodically check bolts and nuts for correct tightness, especially if traveling on rough roads.

Installation Kit

| | |
|--|--|
| 1 - LH steel mounting bracket | 2 - M8 x 55mm bolts |
| 1 - RH steel mounting bracket | 1 - M8 x 30mm bolt |
| 1 - Winch mounting bracket | 1 - M8 x 16mm bolt |
| 1 - Winch control box mount | 4 - M8 flat washers |
| 1 - 10mm steel spacer bar | 3 - M8 spring washers |
| 1 - Pair Bottom side underbody guard | 4 - M6 x 30mm bolts |
| 1 - Pair Front side underbody guard | 2 - M6 x 25mm bolts |
| 2 - Fog light infills 3mm alloy | 14 - M6 x 20mm bolts |
| 4 - 3mm plastic sensor spacers | 2 - M6 x 16mm bolts |
| 1 - Water bottle | 40 - M6 flat washers |
| 1 - Alloy water bottle support mount 3mm alloy | 2 - M6 spring washers |
| 1 - 25mm x 10mm x 6mm steel spacer washer | 2 - M6 nuts |
| 1 - Camera mount (EAM163_VA3A) | 20 - M6 nyloc nuts |
| 2 - 10NB x 58mm spacer tube | 2 - M5 x 20mm bolts |
| 1 - 10NB x 15mm spacer tube | 4 - M5 washers |
| 6 - M12 x 1.75 x 40mm bolts | 2 - M5 nyloc nuts |
| 12 - M12 flat washer | 6 - 8-18 x 25mm self drilling screws |
| 6 - M12 spring washer | 1 - ECB Indicator / DRL / Park Light kit |
| 6 - M12 x 1.75 nuts | 8 - Cable locks |
| 2 - M10 x 1.5 x 100mm bolts | 16 - 150mm Zip ties |
| 1 - M10 x 1.5 x 50mm bolt | 2 - ECB Fog light kit |
| 13 - M10 x 1.25 x 40mm bolts | 1 - Fog light quick click harness (IC10D40S1004ECBH) |
| 28 - M10 flat washers | 4 - Fog light surrounds |
| 16 - M10 spring washers | 2 - ECB Fog light kit |
| 5 - M10 x 1.25 nuts | 1 - 2500mm length 6mm clip lock |
| 3 - M10 x 1.5 nuts | 2 - 180mm lengths of 6mm clip lock |
| 2 - M10 x 1.25 nuts & washer on 300mm wire | 2 - 600mm length 3mm clip lock trim |

Finished Product



Warranty Registration

Contact Details

Name: _____

Address: _____

Product: _____

Email: _____

Phone: _____

Work Order Number: _____

You can find this on the silver label
of your ECB product.

By submitting this registration you automatically subscribe to ECB's mail outs. You
can unsubscribe at any time.

Register Online

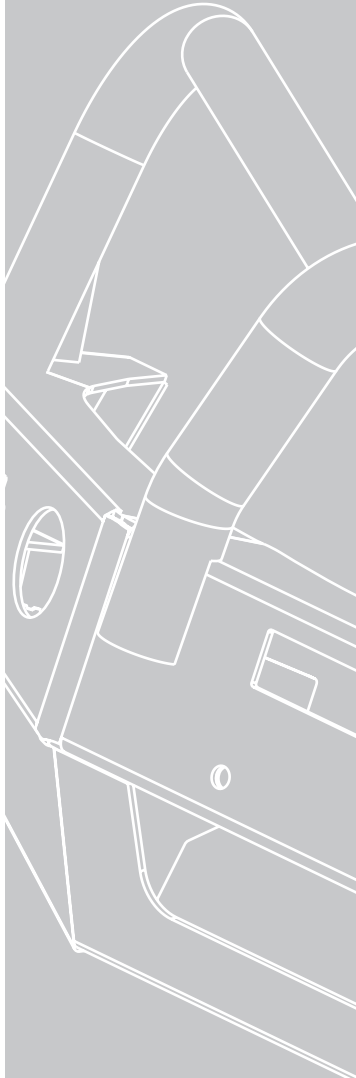
For online registration please go online to www.ecb.com.au/warranty-registration
If you have any questions please contact our national office on 1800 069 145 or
www.ecb.com.au.

Or Post To

PO Box 122 Margate QLD 4019



REPLACES: N/A
REVISED: 11.03.20



1800 069 145
www.ecb.com.au

Strongest Built Australian Made Lifetime Warranty

29 Snook St, Clontarf QLD 4019
PO Box 122, Margate QLD 4019