



**Strongest Built
Australian Made
Lifetime Warranty**

PN:EAF171SY



Fitting Guide & Owners Manual

FORD RANGER PX MKIII

09/2018 ON

BIG TUBE BAR WITH BUMPER LIGHTS
VEHICLE FRONTAL PROTECTION SYSTEM (VFPS)
FOR AIR BAG & ADR COMPLIANT VEHICLES



Index

Pages 3-5

ECB's Benefits
Product Care

Pages 6-7

Stage 1 - Vehicle Testing and Preparation
Stage 2 - Radiator/ grille cover removal
Stages 3 to 6 - Bumper removal

Pages 8-9

Stage 7 - Underbelly guard removal
Stage 8 - Bumper support and sonar unit removal
Stage 9 - Air Dam removal
Stage 10 - Steel mounting bracket installation

Pages 10-11

Stage 11 - Steel mounting bracket installation
Stage 12 - Sonar installation
Stage 13 - Aerial relocation
Stages 14 to 15 - Air dam trim and refitting
Stage 16 - Light wiring

Pages 12-13

Stage 17 to 19 - Bumper trim and refitting
Stage 20 - Sensor refitment
Stage 21 - Indicator / Park light fitment

Pages 14-15

Stage 21 to 22 - Indicator and bumper light fitment

Stage 23 - Clip lock trim fitment
Stage 24 - Protection Bar fitment
Stage 25 - Connections and wiring checks
Stage 26 - Under body guard refitment
Stage 27 - Side underbelly guard installation

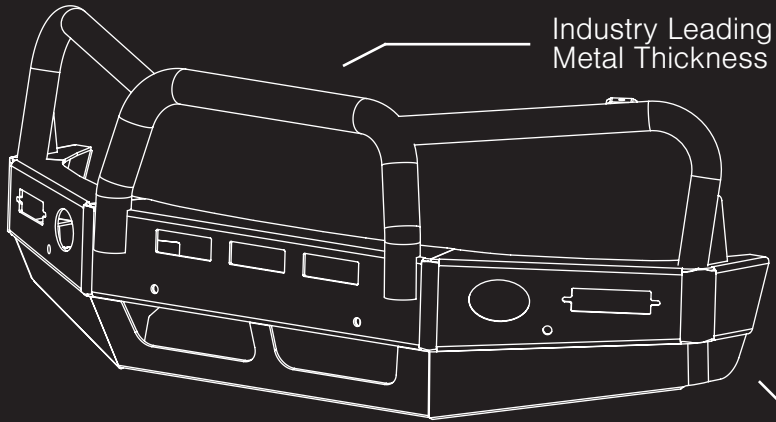
Pages 16-17

Stage 28 - Side underbelly guard installation
Stage 29 - Radiator cover refitment
Stage 29 - Road test and electrical tests
Final checks and Fitting Kit

Pages 18-19

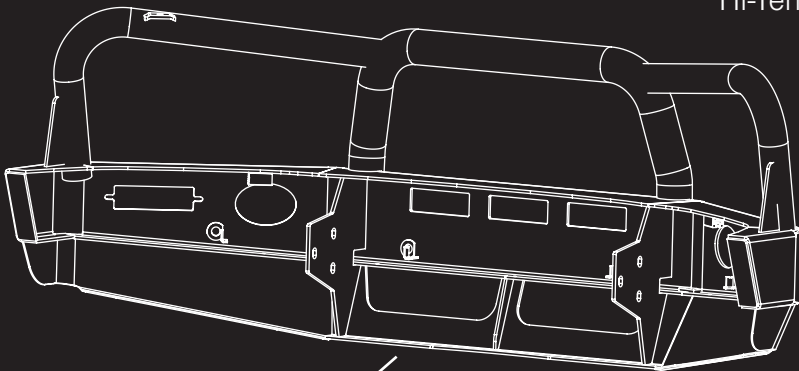
Finished product
Warranty Registration

The Features of ECB



Industry Leading
Metal Thickness

6mm Thick
Hi-Tensile Alloy



Unmatched
Strength

Fully Welded
Construction

ECB's Benefits

Built to Perform - Not to a Price

ECB are proud to claim that their channels are not jigsaw puzzles that are bolted together, or even multiple sections welded together. Where any welding is required, it is done to the highest standards by qualified welders, not machines.

Anti-Corrosive Nature of Alloy

The composition of ECB's alloy has a very high resistance to corrosion. Rust not only looks unappealing but greatly reduces the strength of the metal. Rust can and will weaken the structural integrity of a steel bullbar effectively rendering it useless over time.

Australian Made

Established in 1971, we utilise decades of experience designing, engineering and building products in Australia to suit Australian conditions. We can ensure the best quality controls and help support the local economy and employ over 90 proud Australians.

Weight Saving Benefits

An ECB alloy bullbar is typically half the weight of a steel bullbar. Unnecessary suspension upgrades are not required. The reduced weight also contributes to increased fuel economy and less wear and tear on tyres, suspension and braking components.

Welds That Work

ECB uses only the strongest welds and welding techniques to ensure every product is as structurally sound as possible. MIG (Metal Inert Gas) welding techniques are employed ensuring the welds are as thick as the thickest section of alloy's being joined together.

Lifetime Warranty

ECB provide a lifetime warranty and consumer guarantee on all of our manufactured products. This guarantee highlights the confidence in our ability and provides complete peace of mind for your purchase for the lifetime you own your vehicle.

Product Care

Polished Products

Being a premium mirror polished finish, regular maintenance will be required to keep that iconic ECB shine. We recommend using our own brand of Aluminium Polish. This formula has been tried and tested and in our opinion is the world's best standard.

Directions: Apply a small quantity of Aluminium Polish to a clean soft cloth and rub the metal surface. The longer the rubbing the brighter the surface becomes. Wipe off Aluminium Polish with clean soft cloth. Also suitable for motorised buffing machines.

Note: There are more specific details on the polish bottle. Please read before use.

Powdercoated Products

Our powdercoated finishes are very low maintenance. In fact there is actually very little you will ever need to do for this product. Just clean it as you would your car and it will stay looking good as new.

ECB Aluminium Polish

When you're looking for that showroom finish look for your polished automotive products, you can depend on the no compromise quality of East Coast Bullbars Aluminium Polish. This specifically designed product is the best polish available and we guarantee that this \$#!+ works. Within our decades of manufacturing polished alloy products we have trialed a large range of different polishes on the market and believe without a doubt that nothing beats the finish quality of East Coast Bullbars Aluminium Polish.

East Coast Bullbars Aluminium Polish is excellent for use by hand and is ideal for polished bullbars, nudge bar and stainless steel products. This polish will clean, polish and protect your product from the elements whilst bringing your products back to that showroom finish look.



BIG TUBE BAR

Stage 1

- Test drive vehicle to ensure all driver assists are correctly working and to gauge effectiveness. Park on a flat level surface.
- Apply parking brake and lift bonnet.
- Unwrap ECB Protection bar and disconnect mounts. Discard bolts.
- Ensure these instructions are left with the vehicle owner and/or operator.



Stage 2

- Remove plastic push pull clips from radiator cover on top of grille.
- Remove radiator cover by sliding hand between grille and radiator support to release clips from front cover.



Stage 3

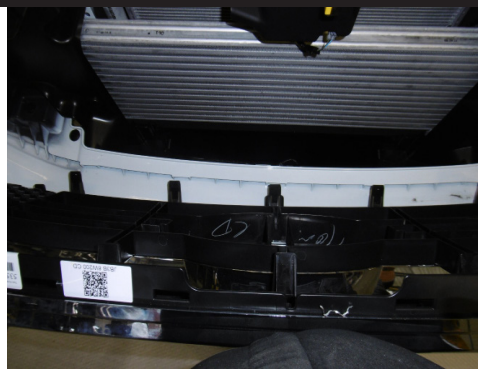
- Under front of guards, remove three (3) plastic screw clips, one (1) T25 torx screw and one (1) 8mm head screw from rear corner of bumper / guard join.
- Pull inner guards away from bumper.
- Disconnect fog lights (left hand side of vehicle).



FORD RANGER PX MKIII

Stage 4

- From top of grille near headlights remove two (2) 10mm head bolts each side. Gently unclip grille from headlight.
- Release clips on each side of the grille by reaching through the inner guard and pressing two (2) clips forward while applying pressure on the grille.
- From in front of the car reach behind grille and unclip the five (5) clips along the bottom of the grille behind the bumper. Remove grille.



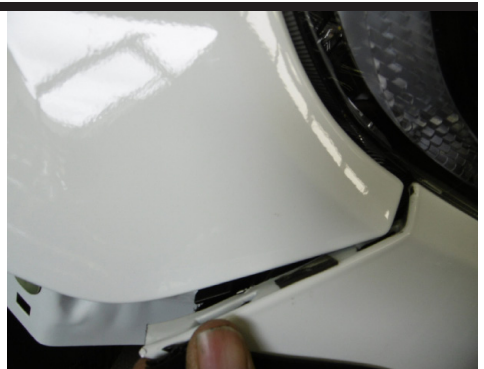
Stage 5

- Under front of bumper, remove four (4) 10mm head bolts.
- From top of the bumper remove four (4) plastic push pull clips and two (2) 10mm head bolts from behind wind deflector.



Stage 6

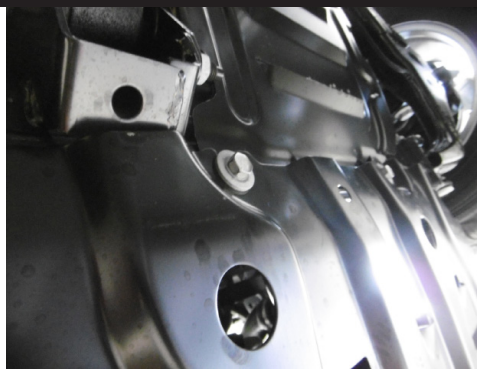
- Gently pull bumper away from guard to release plastic bumper clips.
- Remove bumper from vehicle.



BIG TUBE BAR

Stage 7

- From underneath the vehicle loosen only the two (2) rear 15mm bolts from the under belly guard.
- Completely remove the front two (2) 15mm bolts.
- Slide the guard towards the front of the vehicle and remove.



Stage 8

- Remove foam support two (2) push pull clips.
- Remove two (2) plastic push pull clips from plastic air dam behind the bumper support.
- Remove four (4) 15mm head bolts from front of bumper support.
- Disconnect sonar.
- Remove bumper support.
- Remove sonar harness from bumper support.
- Remove sonar three (3) 10mm head bolts.



FORD RANGER PX MKIII

Stage 9

- Remove plastic radiator air dams two (2) 8mm head bolts per side.
- Detach the four (4) lower bumper supports.
- Remove four (4) 15mm head bolts from chassis rail.



Stage 10

- Fit ECB steel mounting bracket (supplied) to front of chassis by sliding down from top of chassis.
- Rear of steel mounting bracket will be tight on outside of chassis. This is an expansion fit. It is important that the mount is level and lined up square with the vehicle body.
- Refit four (4) original equipment bolts to front of chassis rails and two (2) M10 x 40mm bolts, flat washers, spring washers and nuts (supplied) to front hole on side of chassis.



NOTE: Extra holes in steel mounting bracket chassis face plates are not required for non winch bars.

NOTE: Should the chassis mount not be level and square. A hammer may need to be used to realign the front of the chassis at the connection points on the vehicle to achieve a level and aligned mount.

FORD RANGER PX MKIII

Stage 11

- Using steel mounting bracket as a guide, drill rear hole in chassis to 10mm.
- **Note: Blow filings clear and treat all exposed metal with a rust inhibitor.**
- Fit M10 x 40mm bolts, spring washers, flat washer and nut with washer on 300mm wire (supplied).



Stage 12

- Fit sonar to steel mounting bracket using three (3) M6 x 25mm bolts washers and nyloc nuts (supplied).
- Attach wiring to ECB steel mounting bracket using zip ties (supplied)



Stage 13

- Trim metallic aerial from drivers side wheel inner guard.
- Gently relocate the FM aerial to side of drivers side air dam
- Using aerial as a guide, drill 6mm holes in top and bottom holes and attach using a plastic screw clip from lower inner guard.



BIG TUBE BAR

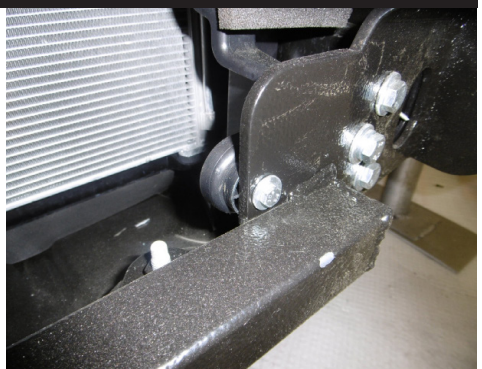
Stage 14

- Hold radiator air dam in position on vehicle.
- Mark and trim the smallest amount possible from air dam to fit around ECB steel mounting bracket.
- Refit to vehicle using original clips.
- Attach wiring for aerial or temperature sensor (dependant on side of vehicle), ensuring wiring has clearance from all moving parts and sharp edges.



Stage 15

- Fit plastic air dams to rear of steel mounting bracket using M6 x 25mm bolts, flat washers and nyloc nuts (supplied).



Stage 16

- Disconnect indicator and parking lights on vehicle. Install ECB quick click wiring harnesses (supplied) between disconnected harness and indicator / park lights on vehicle. Run wiring out from under lights ensuring clearance from sharp edges and moving parts.
- Run wiring out from under lights ensuring harness is clear from moving parts and sharp edges.

FORD RANGER PX MKIII

Stage 17 XL, XLS, XLT, EVEREST

NOTE: There are two cut lines marked on the template. Use correct cutting line for the vehicle you are fitting.

- Tape outer corners of bumper for protection when cutting and marking.
- Check template (supplied) for correct sizing. Using sharp scissors, carefully cut bumper template out on correct line for vehicle.
- Fit template to outer corners and join line of bumper.
- Mark bumper for cutting. Double check for correct alignment.
- Carefully cut bumper on marked line.
- **CAUTION:** This is the final cut. Ensure lines and cuts are straight and clean as cut is not trimmed.



XL, XLS, XLT, EVEREST

WILDTRAK

- Tape outer corners of bumper for protection when cutting and marking.
- Check bumper template (supplied) for correct sizing. Using sharp scissors, carefully cut bumper template out on correct line for vehicle..
- Fit template to outer corners and join line of bumper.
- Mark bumper for cutting. Mark trim line up under grille ensuring inner mounts are kept as part of headlight sections. Double check for correct alignment. NOTE: Bumper becomes two outer sections only.
- Carefully cut bumper on marked line.
- **CAUTION:** This is the final cut. Ensure lines and cuts are straight and clean as cut is not trimmed.
- Cut grille to suit bumper and picture as shown. Retain both side grille retainer clips.



WILDTRAK

BIG TUBE BAR

Stage 18

- Mark the bumper side clips ready for cutting.
- Remove bumper side clip from vehicle, two (2) 10mm head bolts.
- Cut the bumper side clips and refit the front section only.



Stage 19

- Fit cut bumper back to vehicle using the original side clips and drill side plastic push pull clip.

NOTE: A self drilling screw can be used on underside of bumper into guard to help retain the bumper in the clip. Ensure bumper is correctly positioned before installing.

- Install grille to vehicle using original equipment top clips and lower 10mm head bolts.
- Install guard infill (supplied) to rear of guard using original screw.



Stage 20

- Remove centre of black sensor housing already installed into the bullbar by pushing on middle section breaking small tabs. Trim tabs to suit rest of cut out.
- Install parking sensors into their respective sensor housing.

NOTE: For sensor security, a zip tie may be used across the rear of the sensor through the holes in the bracket to lock the sensor in position. Do not overtighten.



FORD RANGER PX MKIII

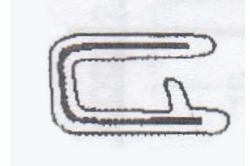
Stage 21

- Fit LED indicator / park lights into protection bar as per instructions supplied with the LED indicator / park light kit. **NOTE:** Ensure light is the correct way up.
- Attach bumper lights to protection bar, Place M6 x 20 bolts, spring washers (supplied) through light mount from inside and attach nut to to. Slide assembly into light mount in protection bar and centralize light to hole. **TIGHTEN FIRM ONLY.** Install bumper light surrounds (supplied) to openings with largre of surround to inside of opening.



Stage 22

- Attach 6mm clip lock trim (supplied) to top of protection bar.
- Attach 6mm clip lock trim to front opening of Protection bar. Place join to top of hole for best results.
- **NOTE:** Trim off lower edge on an angle so trim will sit flush with end of protection bar.



Stage 23

- Fit protection bar to outside of steel mounting bracket using M12 x 40mm bolts, flat washers, spring washers and nuts (supplied).
- **Finger tighten only.**
- Align protection bar to vehicle.
- **TIGHTEN ALL BOLTS.**
- Refer to further photos on page 18 if required.



BIG TUBE BAR

Stage 24

- Connect and check indicator / park lights for correct operation.
- Connect and check bumper lights for correct operation.

Stage 25

- Refit under body steel guard using original bolts into steel mounting bracket at front.
- **TIGHTEN ALL BOLTS.**



Stage 26

- Install under body guards to top of lower leg of channel section of protection bar with rear flange pointing down.
- Access to inner hole from side of plate, rear hole from behind inner guard and front outer hole through access hole in under body guard. Use two (2) M6 x 25mm bolts, one (1) M6 x 25mm bolt and washer on 100mm wire, flat washers and nyloc nuts (per side) (supplied).



FORD RANGER PX MKIII

Stage 27

- Using under body guard as a guide, drill holes in inner guard to 6mm and attach using two (2) M6 x 20 bolts, flat washers and nyloc nuts (per side) (supplied).
- Trim inner guards from bottom of channel to vehicles inner guard removing lower section.



Stage 28

- Refit grille/radiator cover using four (4) plastic push pull clips and push gently on the front of cover to seat in position.



Stage 29

- Road test vehicle to ensure all driver assists and parking assists are correctly working.

Final Checks & Fitting Kit

Ensure Number Plate is Clearly Visible

Note: When fitting/refitting the licence plate to the vehicle, ensure there is no obstruction to licence plate vision in accordance with local authorities. If required relocate licence plate to an alternate location.

Further VFPS Notes

1. Do not attach VFPS to the vehicle using anchorages not intended for this purpose (e.g. engine mounting bolts).
2. Do not use this product for any vehicle make or model, other than those specified by the VFPS manufacturer.
3. Do not remove the plaque or label from the VFPS.
4. Do not modify the structure of the VFPS in any way.
5. No accessory or fitment should project forward of the VFPS forward profile.
6. **Ensure these instructions are left with the vehicle owner and/or operator.**

Important Information

Periodically check bolts and nuts for correct tightness, especially if traveling on rough roads.

Fitting Kit

1 - ECB Steel mounting bracket	2 - M6 x 25 bolt and washer on 100mm wire
1 - Pair under body guards (marked with "F")	28 - M6 flat washer
1 - Pair guard infills (EAF162SY_ IC3AL)	15 - M6 nyloc nuts
8 - M12 x 1.75 x 40mm bolts.	2 - M6 spring washer
16 - M12 flat washers	2 - M6 nuts
8 - M12 spring washers	1 - ECB Indicator / Park/ DRL kit
8 - M12 x 1.75 nuts	1 - Quick Click Harness (IS18FORAIPDH)
4 - M10 x 1.5 x 40mm bolts	1 - Bumper light kit
6 - M10 flat washers	2 - Bumper light surrounds
4 - M10 spring washers	1 - Quick Click Bumper (IC10D40S1004ECBH)
2 - M10 x 1.5 nuts	1 - 2550mm length 6mm clip lock trim
2 - M10 x 1.5 nuts and washers on 300mm wire	1 - 600mm length 6mm clip lock trim
6 - M6 x 20mm bolts	15 - 300mm zip ties
9 - M6 x 25 bolts	6 - 150mm zip ties

Finished Product



Warranty Registration

Contact Details

Name: _____

Address: _____

Product: **EAF171SY** _____

Email: _____

Phone: _____

Work Order Number: _____

You Can find this on the silver label
of your ECB product.

By submitting this registration you automatically subscribe to ECB's mail outs.
You can unsubscribe at any time.

Register Online

For online registration please go online to www.ecb.com.au/warranty-registration
If you have any questions please contact our national office on 1800 069 145 or
www.ecb.com.au.

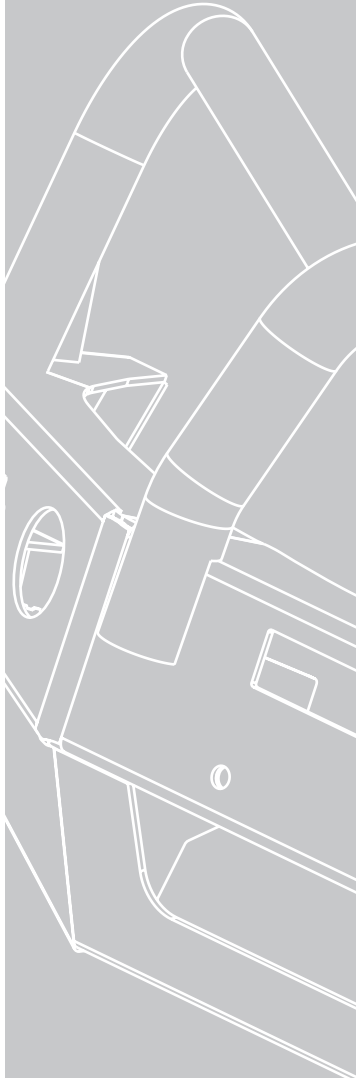
Or Post To:

PO Box 122, Margate, QLD 4019



REPLACES: 26.11:18

REVISED: 08.03.21



1800 069 145
www.ecb.com.au

Strongest Built Australian Made Lifetime Warranty

29 Snook St, Clontarf QLD 4019
PO Box 122, Margate QLD 4019