



**WORLD'S BEST
ALLOY BULLBARS**

**Lighter
Stronger
Better!**

**Strongest Built
Australian Made
Lifetime Warranty**

PN:EAF170SY



**Fitting Guide &
Owners Manual
FORD RANGER PX MKIII
09/2018 ON**

**BIG TUBE BAR
VEHICLE FRONTAL PROTECTION SYSTEM (VFPS)
FOR AIR BAG & ADR COMPLIANT VEHICLES**

**SUPERCARS
CHAMPIONSHIP**

**OFFICIAL BULLBAR
OF SUPERCARS**

Index

Pages 3-5

ECB's Benefits
Product Care

Pages 6-7

Stage 1 - Vehicle Testing and
Preparation
Stage 2 - Radiator / grille cover removal
Stage 3 to 6 - Bumper removal

Pages 8-9

Stage 7 - Underbelly guard removal
Stage 8 - Bumper support removal
Stage 9 - Air dam removal
Stage 10 to 11 - Steel mounting bracket
installation

Pages 10-11

Stage 12 - Aerial relocation
Stage 13 to 14 - Air dam trim and
refitting
Stage 15 - Indicator Park light wiring
Stage 16 to 17 - Bumper cut

Pages 12-13

Stage 18 - Bumper rim and refitment
Stage 19 to 20 - Protection Bar
preparation
Stage 21 - Protection Bar installation
Stage 22 - Connect and check lights
Stage 23 - Underbelly guard refitment

Pages 14-15

Stage 24 to 25 - Underbelly guard fitment
Stage 26 - Radiator cover refitment
Stage 26 - Road tests and checks

Pages 16-17

Final Checks & Fitting Kit
Finished Product

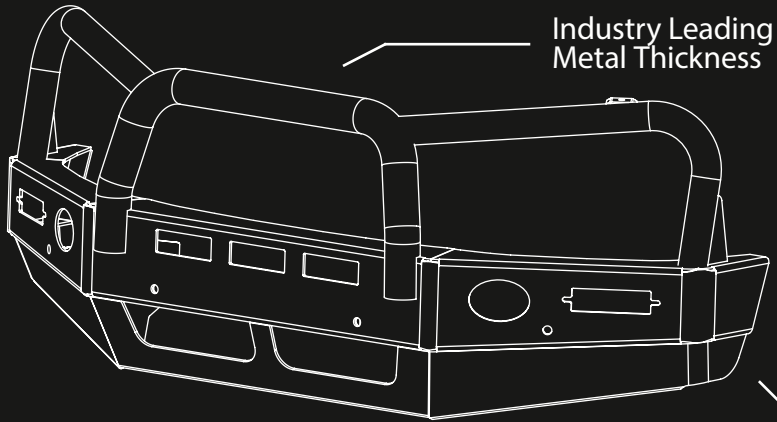
Pages 18-19

Notes
Warranty Registration

Pages 20-21

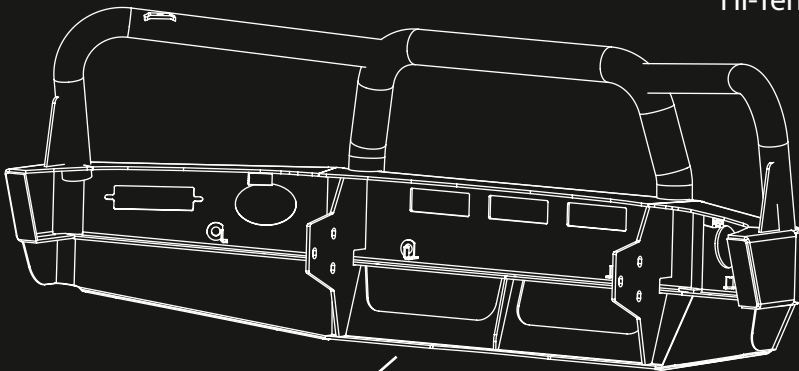
Notes

The Features of ECB



Industry Leading
Metal Thickness

6mm Thick
Hi-Tensile Alloy



Unmatched
Strength

Fully Welded
Construction

ECB's Benefits

Built to Perform - Not to a Price

ECB are proud to claim that their channels are not jigsaw puzzles that are bolted together, or even multiple sections welded together. Where any welding is required, it is done to the highest standards by qualified welders, not machines.

Anti-Corrosive Nature of Alloy

The composition of ECB's alloy has a very high resistance to corrosion. Rust not only looks unappealing but greatly reduces the strength of the metal. Rust can and will weaken the structural integrity of a steel bullbar effectively rendering it useless over time.

Australian Made

Established in 1971, we utilise over 46 years of experience designing, engineering and building products in Australia to suit Australian conditions. We can ensure the best quality controls and help support the local economy and employ over 90 proud Australians.

Weight Saving Benefits

An ECB alloy bullbar is typically half the weight of a steel bullbar. Unnecessary suspension upgrades are not required. The reduced weight also contributes to increased fuel economy and less wear and tear on tyres, suspension and braking components.

Welds That Work

ECB uses only the strongest welds and welding techniques to ensure every product is as structurally sound as possible. MIG (Metal Inert Gas) welding techniques are employed ensuring the welds are as thick as the thickest section of alloy's being joined together.

Lifetime Warranty

ECB provide a lifetime warranty and consumer guarantee on all of our manufactured products. This guarantee highlights the confidence in our ability and provides complete peace of mind for your purchase for the lifetime you own your vehicle.

Product Care

Polished Products

Being a premium mirror polished finish, regular maintenance will be required to keep that iconic ECB shine. We recommend using our own brand of Aluminium Polish, This formula has been tried and tested and in our opinion is the world's best standard.

Directions: Apply a small quantity of Aluminium Polish to a clean soft cloth and rub the metal surface. The longer the rubbing the brighter the surface becomes. Wipe off Aluminium Polish with clean soft cloth. Also suitable for motorised buffing machines.

Note: There are more specific details on the polish bottle. Please read before use.

Powdercoated Products

Our powdercoated finishes are very low maintenance, Infact there is actually very little you will ever need to do for this product. Just clean it as you would your car and it will stay looking good as new.

ECB Aluminium Polish

When you're looking for that showroom finish look for your polished automotive products, you can depend on the no compromise quality of East Coast Bullbars Aluminium Polish. This specifically designed product is the best polish available and we guarantee that this \$#!+ works. With over 40 years of manufacturing polished alloy products we have trialled a large range of different polishes on the market and believe without a doubt that nothing beats the finish quality of East Coast Bullbars Aluminium Polish.

East Coast Bullbars Aluminium Polish is excellent for use by hand and is ideal for polished bullbars, nudge bar and stainless steel products. This polish will clean, polish and protect your product from the elements whilst bringing your products back to that showroom finish look.



BIG TUBE BAR

Stage 1

- Test drive vehicle to ensure all driver assists are correctly working and to gauge effectiveness. Park on a flat level surface.
- Apply parking brake and lift bonnet.
- Unwrap ECB Protection bar and disconnect mounts. Discard bolts.
- NOTE: THIS BAR DOES NOT SUIT VEHICLES WITH TECH PACK OR FOG LIGHTS



Stage 2

- Remove plastic push pull clips from radiator cover on top of grille.
- Remove radiator cover by sliding hand between grille and radiator support to release clips from front cover.



Stage 3

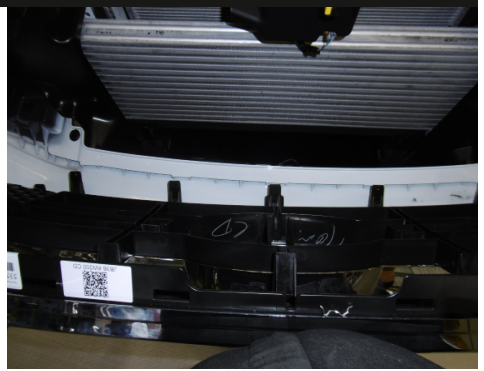
- Under front of guards, remove three (3) plastic screw clips, one (1) T25 torx screw and one (1) 8mm head screw from rear corner of bumper / guard join.
- Pull inner guards away from bumper.
- Disconnect fog lights (left hand side of vehicle).



FORD RANGER PX MKIII

Stage 4

- From top of grille near headlights remove two (2) 10mm head bolts each side. Gently unclip grille from headlight.
- Release clips on each side of the grille by reaching through the inner guard and pressing two (2) clips forward while applying pressure on the grille.
- From in front of the car reach behind grille and unclip the five (5) clips along the bottom of the grille behind the bumper. Remove grille.



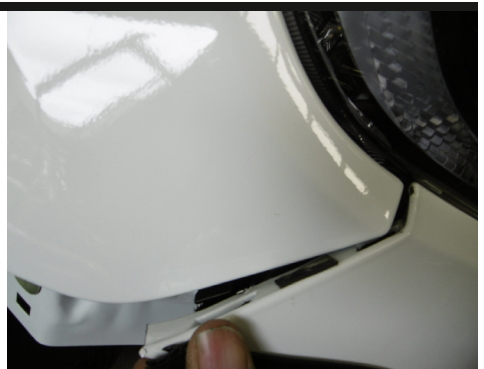
Stage 5

- Under front of bumper, remove four (4) 10mm head bolts.
- From top of the bumper remove four (4) plastic push pull clips and two (2) 10mm head bolts from behind wind deflector.



Stage 6

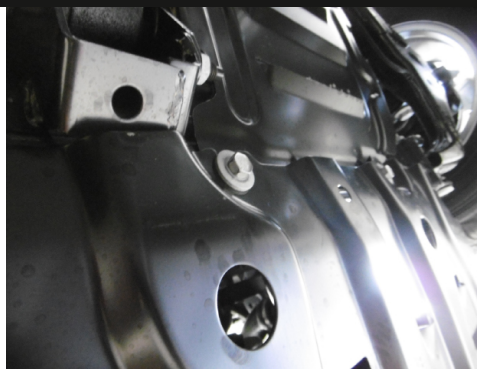
- Gently pull bumper away from guard to release plastic bumper clips.
- Remove bumper from vehicle.



BIG TUBE BAR

Stage 7

- From underneath the vehicle loosen only the two (2) rear 15mm bolts from the under belly guard.
- Completely remove the front two (2) 15mm bolts.
- Slide the guard towards the front of the vehicle and remove.



Stage 8

- Remove foam support two (2) push pull clips.
- Remove two (2) plastic push from plastic air dam behind the bumper support.
- Remove four (4) 15mm head bolts from front of bumper support.
- Remove bumper support.



Stage 9

- Remove plastic radiator air dams two (2) 8mm head bolts per side.
- Detach the four (4) lower bumper supports.
- Remove four (4) 15mm head bolts from chassis rail.



FORD RANGER PX MKIII

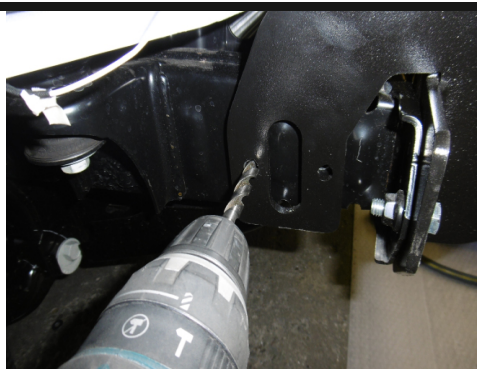
Stage 10

- Fit ECB steel mounting bracket (supplied) to front of chassis by sliding down from top of chassis.
- Rear of steel mounting bracket will be tight on outside of chassis. This is an expansion fit. It is important that the mount is level and lined up square with the vehicle body.
- Refit four (4) original equipment bolts to front of chassis rails and two (2) M10 x 40mm bolts, flat washers, spring washers and nuts (supplied) to front hole on side of chassis.
- NOTE: Extra holes in steel mounting bracket chassis face plates are not required for non winch bars.
- NOTE: Should the chassis mount not be level and square. A hammer may need to be used to realign the front of the chassis at the connection points on the vehicle to achieve a level and aligned mount.



Stage 11

- Using steel mounting bracket as a guide, drill rear hole in chassis to 10mm.
- Note: Blow filings clear and treat all exposed metal with a rust inhibitor.
- Fit M10 x 40mm bolts, spring washers, flat washer and nut with washer on 300mm wire (supplied).



BIG TUBE BAR

Stage 12

- Trim wheel arch around metallic aerial from drivers side wheel guard.
- Gently relocate the FM aerial.
- Drill 6mm attachment holes in top and bottom holes of aerial and attach using a plastic screw clip from lower inner guard.



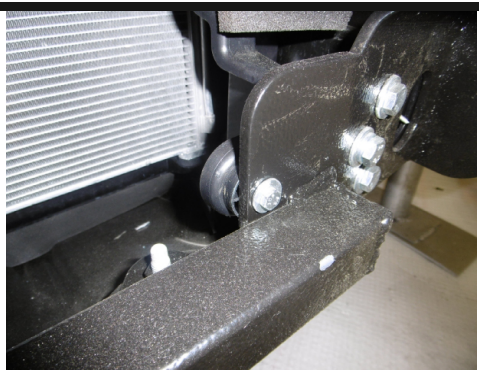
Stage 13

- Hold radiator air dam in position on vehicle.
- Mark and trim the smallest amount possible from air dam to fit around ECB steel mounting bracket.
- Attach wiring for aerial or temperature sensor (dependant on side of vehicle), refit to vehicle ensuring wiring has clearance from all moving parts and sharp edges.



Stage 14

- Fit plastic air dams to rear of steel mounting bracket using M6 x 25mm bolts, flat washers and nyloc nuts (supplied).



FORD RANGER PX MKIII

Stage 15

- Disconnect indicator and parking lights on vehicle. Install ECB quick click wiring harnesses (supplied) between disconnected harness and indicator / park lights on vehicle. Run wiring out from under lights ensuring clearance from sharp edges and moving parts.
- Run wiring out from under lights ensuring clearing from moving parts and sharp edges.

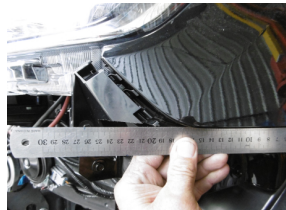
Stage 16

- Tape outer corners of bumper for protection when cutting and marking.
- Check templates (supplied) for correct sizing. Using sharp scissors, carefully cut bumper template out.
- Fit template to outer corners and join line of bumper.
- Mark bumper for cutting. Double check for correct alignment. Carefully cut bumper on marked line.
- Carefully cut bumper on marked line.
- CAUTION: This is the final cut. Ensure lines and cuts are straight and clean as cut is not trimmed.



Stage 17

- Mark the bumper side clips ready for cutting.
- Remove bumper side clip from vehicle, two (2) 10mm head bolts.
- Cut the bumper side clips and refit the front section only.



BIG TUBE BAR

Stage 18

- Fit cut bumper back to vehicle using the original side clips and drill side plastic push pull clip.
- Install grille to vehicle using original equipment top clips and lower 10mm head bolts.
- Install guard infill (supplied) to rear of guard using original screw.



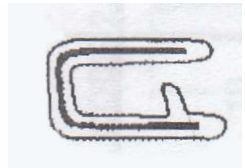
Stage 19

- Fit LED indicator / park lights into protection bar as per instructions supplied with the LED indicator / park light kit.
- NOTE: Ensure light is the correct way up.



Stage 20

- Attach 6mm clip lock trim (supplied) to top of protection bar.
- NOTE: Trim off lower edge on an angle so trim will sit flush with end of protection bar.



FORD RANGER PX MKIII

Stage 21

- Fit protection bar to outside of steel mounting bracket using M12 x 40mm bolts, flat washers, spring washers and nuts (supplied).
- Finger tighten only.
- Align protection bar to vehicle.
- TIGHTEN ALL BOLTS.
- Refer to further photos on page 17 if required.



Stage 22

- Connect and check indicator / park lights for correct operation.

Stage 23

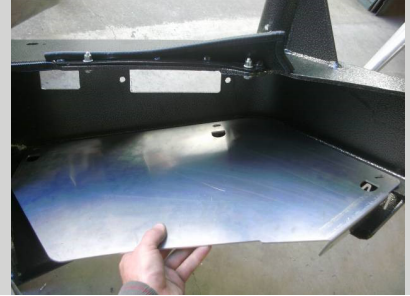
- Refit under body steel guard using original bolts into steel mounting bracket at front.
- TIGHTEN ALL BOLTS.



BIG TUBE BAR

Stage 24

- Install under body guards to top of lower leg of channel section of protection bar with rear flange pointing down.
- Access to inner hole from side of plate, rear hole from behind inner guard and front outer hole through access hole in under body guard. Use two (2) M6 x 25mm bolts, one (1) M6 x 25mm bolt and washer on 100mm wire, flat washers and nyloc nuts (per side) (supplied).



Stage 25

- Using under body guard as a guide, drill holes in inner guard to 6mm and attach using two (2) M6 x 20 bolts, flat washers and nylock nuts (per side) (supplied).
- Trim inner guards from bottom of channel to vehicles inner guard removing lower section.



FORD RANGER PX MKIII

Stage 26

- Refit grille/radiator cover using four (4) plastic push pull clips and push gently on the front of cover to seat in position.



Stage 27

- Test drive vehicle to ensure all driver assist and parking assists work correctly.

Final Checks & Fitting Kit

Ensure Number Plate is Clearly Visible

Note: When fitting/refitting the licence plate to the vehicle, ensure there is no obstruction to licence plate vision in accordance with local authorities. If required relocate licence plate to an alternate location.

Further VFPS Notes

1. Do not attach VFPS to the vehicle using anchorages not intended for this purpose (e.g. engine mounting bolts).
2. Do not use this product for any vehicle make or model, other than those specified by the VFPS manufacturer.
3. Do not remove the plaque or label from the VFPS.
4. Do not modify the structure of the VFPS in any way.
5. No accessory or fitment should project forward of the VFPS forward profile.
6. Insure these instructions are left with the vehicle owner and/or operator.

Important Information

Periodically check bolts and nuts for correct tightness, especially if traveling on rough roads.

Fitting Kit

1 - ECB Steel mounting bracket

2 - M10 x 1.5 nuts

1 - Pair under body guards (marked with "F")

2 - M10 x 1.5 nuts and washers on 300mm wire

1 - Pair guard infills (EAF162SY_IC3AL)

4 - M6 x 20mm bolts

8 - M12 x 1.75 x 40mm bolts.

6 - M6 x 25 bolts

16 - M12 flat washers

2 - M6 x 25 bolt and washer on 100 wire

8 - M12 spring washers

22 - M6 flat washer

8 - M12 x 1.75 nuts

12 - M6 nyloc nuts

4 - M10 x 1.5 x 40mm bolts

1 - ECB Indicator / Park Light kit

6 - M10 flat washers

1 - Quick Click Kit (IC18FORAIPDH)

4 - M10 spring washers

1 - 2550mm length 6mm clip lock trim

1 - 600mm length 6mm clip lock trim

Finished Product



Notes



A series of 20 horizontal lines for writing notes, spaced evenly down the page.

_____ Full Name

_____ Date

Warranty Registration

Contact Details

Name: _____

Address: _____

Product: _____

Email: _____

Phone: _____

Work Order Number: _____

You Can find this on the silver label
of your ECB product.

By submitting this registration you automatically subscribe to ECB's mail outs.
You can unsubscribe at any time.

Or Register Online

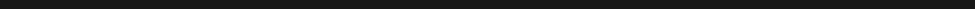
For online registration please go online to www.ecb.com.au/TBC. If you have any questions please contact our national office on 1800 069 145 or www.ecb.com.au.



PN: EAF170SY

Please post to PO Box 122
Margate QLD 4019

Notes



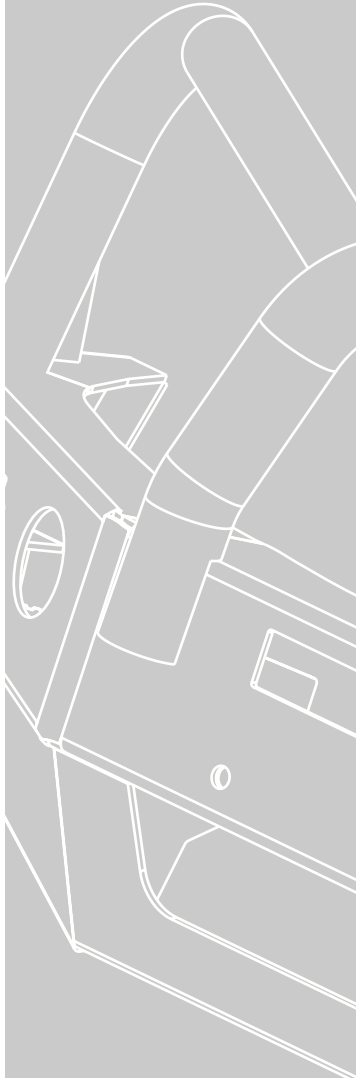
A series of 20 horizontal lines for writing notes, spaced evenly down the page.

 Full Name

 Date

REPLACES: 24.06.19

REVISED: 20.11.20



1800 069 145
www.ecb.com.au

Strongest Built Australian Made Lifetime Warranty

29 Snook St, Clontarf QLD 4019
PO Box 122, Margate QLD 4019