



**WORLD'S BEST  
ALLOY BULLBARS**

**Strongest Built  
Australian Made  
Lifetime Warranty**

**PN:BT281SY / 5T281A**



# **Fitting Guide & Owners Manual**

**Toyota 79 Series Single Cab**

**11-2016 On**

Big Tube Bar and Brush Bar set  
VEHICLE FRONTAL PROTECTION SYSTEM (VFPS)  
FOR AIR BAG & ADR COMPLIANT VEHICLES  
Please note: Big Tube Bar and brush bar can be supplied separately  
This Instruction covers both parts of this product.



# Index

---

## **Pages 3-5**

ECB's Benefits  
Product Care

## **Pages 6-7**

Stage 1 - Vehicle Testing and Preparation  
Stages 2 to 3 - Bumper Skin Removal  
Stage 4 - Bumper Step Removal  
Stage 5 - Bumper Attaching Assembly  
Stage 6 - Mount Installation

## **Pages 8-9**

Stage 7 - Indicator Wiring  
Stages 8 to 9 - Protection Bar Preparation  
Stages 10 - Protection Bar Installation  
Stages 11 to 12 - Side Step Fitment

## **Pages 10-11**

Stage 13 - Side Step Fitment continued  
Stage 14 to 18 - Side Rail Fitment

## **Pages 12-13**

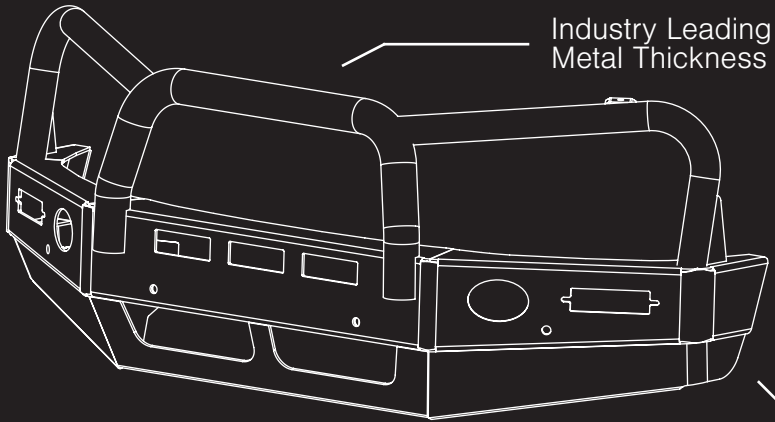
Stage 19 - Side Rail Fitment (cont'd)  
Stage 20 - Final checks  
Final Checks  
Fitting Kit

## **Pages 14-15**

Finished Product  
Warranty Registration

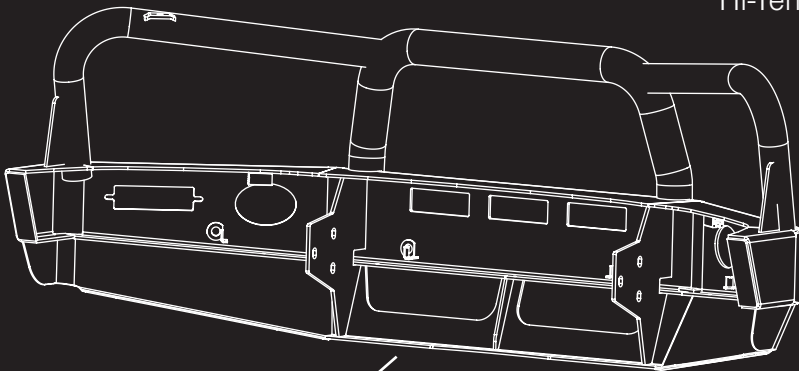
# The Features of ECB

---



Industry Leading  
Metal Thickness

6mm Thick  
Hi-Tensile Alloy



Unmatched  
Strength

Fully Welded  
Construction

# ECB's Benefits

---

## **Built to Perform - Not to a Price**

ECB are proud to claim that their channels are not jigsaw puzzles that are bolted together, or even multiple sections welded together. Where any welding is required, it is done to the highest standards by qualified welders, not machines.

## **Anti-Corrosive Nature of Alloy**

The composition of ECB's alloy has a very high resistance to corrosion. Rust not only looks unappealing but greatly reduces the strength of the metal. Rust can and will weaken the structural integrity of a steel bullbar effectively rendering it useless over time.

## **Australian Made**

Established in 1971, we utilise decades of experience designing, engineering and building products in Australia to suit Australian conditions. We can ensure the best quality controls and help support the local economy and employ over 90 proud Australians.

## **Weight Saving Benefits**

An ECB alloy bullbar is typically half the weight of a steel bullbar. Unnecessary suspension upgrades are not required. The reduced weight also contributes to increased fuel economy and less wear and tear on tyres, suspension and braking components.

## **Welds That Work**

ECB uses only the strongest welds and welding techniques to ensure every product is as structurally sound as possible. MIG (Metal Inert Gas) welding techniques are employed ensuring the welds are as thick as the thickest section of alloy's being joined together.

## **Lifetime Warranty**

ECB provide a lifetime warranty and consumer guarantee on all of our manufactured products. This guarantee highlights the confidence in our ability and provides complete peace of mind for your purchase for the lifetime you own your vehicle.

# Product Care

---

## Polished Products

Being a premium mirror polished finish, regular maintenance will be required to keep that iconic ECB shine. We recommend using our own brand of Aluminium Polish. This formula has been tried and tested and in our opinion is the world's best standard.

**Directions:** Apply a small quantity of Aluminium Polish to a clean soft cloth and rub the metal surface. The longer the rubbing the brighter the surface becomes. Wipe off Aluminium Polish with clean soft cloth. Also suitable for motorised buffing machines.

**Note:** There are more specific details on the polish bottle. Please read before use.

## Powdercoated Products

Our powdercoated finishes are very low maintenance. Infact there is actually very little you will ever need to do for this product. Just clean it as you would your car and it will stay looking good as new.

## ECB Aluminium Polish

When you're looking for that showroom finish look for your polished automotive products, you can depend on the no compromise quality of East Coast Bullbars Aluminium Polish. This specifically designed product is the best polish available and we guarantee that this \$#!+ works. Within our decades of manufacturing polished alloy products we have trialed a large range of different polishes on the market and believe without a doubt that nothing beats the finish quality of East Coast Bullbars Aluminium Polish.

East Coast Bullbars Aluminium Polish is excellent for use by hand and is ideal for polished bullbars, nudge bar and stainless steel products. This polish will clean, polish and protect your product from the elements whilst bringing your products back to that showroom finish look.



# Toyota Landcruiser 79 Series

## Stage 1

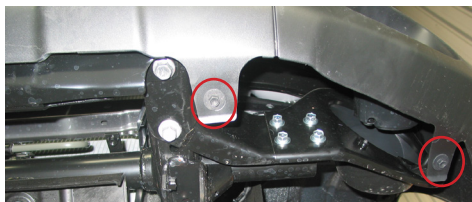
- Test drive vehicle to ensure all driver assists are correctly working and to gauge effectiveness. Park on a flat level surface.
- Apply parking brake and lift bonnet.
- Unwrap ECB Protection bar and disconnect mounts. Discard bolts.
- Ensure these instructions are left with the vehicle owner and/or operator.



**Please note:** Big Tube Bar and brush bar can be supplied separately. This Instruction covers both parts of this product.

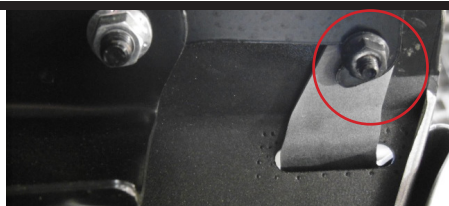
## Stage 2

- From gap between bumper and lower headlight panel, remove five (5) plastic push pull clips.
- Under vehicle, remove four (4) 10mm head bolts. from lower flange of bumper skin.



## Stage 3

- On inside corners of bumper, loosen only one (1) 10mm head nut (per side).
- In corners of front lower grille section. remove two (2) 10mm head bolts.
- Remove bumper skin.



# BT281SY / 5T281A

## Stage 4

- From top of step section, remove three (3) 14mm head bolts (per side).
- Next to fog light covers, remove four (4) 14mm head bolts (per side).
- Remove step section from vehicle.



## Stage 5

- From top of chassis rail, remove rear 17mm head bolt and nut.
- Remove bumper attachment assembly.



## Stage 6

- Install ECB steel mounting brackets (supplied) to front of chassis rail using two (2) M10 x 1.25 x 25mm bolts, spring washer and flat washers (supplied), in the sides of the chassis rail and one (1) M12 x 1.25 x 180mm bolt, flat washers, spring washer and M12 x 1.25 nut (supplied) (per side).
- Align mounts ensuring correct distance between mount for protection bar.  
NOTE: Protection bar fits to outside of mounts.
- TIGHTEN ALL BOLTS





# Toyota Landcruiser 79 Series

---

## Stage 7

- Disconnect indicator and parking lights on vehicle. Install ECB quick click wiring harnesses (supplied) between disconnected harness and indicator / park lights on vehicle.
- Run wiring out from under lights ensuring clearance from sharp edges and moving parts.

---

## Stage 8

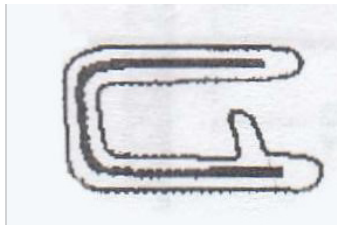
- Fit ECB LED indicator / park lights into protection bar as per instructions supplied with the LED indicator kit.
- NOTE: Ensure park light is to top.



---

## Stage 9

- Attach 6mm clip lock trim (supplied) to top of ECB protection bar.
- NOTE: Trim off lower edge on an angle so trim will sit flush with end of protection bar.





# BT281SY / 5T281A

## Stage 10

- Fit ECB Protection Bar to outside of the ECB steel mount using six (6) M12 x 1.75 x 40mm bolts, flat washers, spring washer and M12 x 1.75 nut (supplied).
- Align Protection Bar with vehicle. Finger tighten bolts.



## Stage 11

- Remove original equipment steps (if fitted).
- Working one side at a time, remove two (2) 12mm head bolts from gearbox cross member.
- Use clamp or jack to stop chassis cross member dropping.



## Stage 12

- Place 6mm spacers (supplied) between support and mounting bracket on step.
- Insert M10 x 1.5 x 140mm bolt (10.9 rating) and M10 flat washer and M10 x 1.5 nyloc nut (supplied).
- Do not tighten.



# Toyota Landcruiser 79 Series

## Stage 13

- For rear support bracket, slide chassis mount plate (supplied) on inside of fuel lines on passenger side.
- Use M12 x 1.75 x 40mm bolts, flat washers and M12 x 1.75 nyloc nuts (supplied) to secure steps to mounting plate, on both sides, finger tighten only.
- On driver side remove 12mm head bolt from wiring harness, (retain bolt for refitment). Slide mounting plate between brake lines and replace bolt.
- Place convoluted tubing over lines where they cross the mounting bracket to protect the lines. Secure in position using silicon inside the tubing or similar. Move lines away from mounts to ensure they do not rub.



## Stage 14

- Using paper tape, tape rear of tube on protection bar.
- Fit side rail onto step. Slide over sleeve on step.
- Underside of step, place 6mm spacer between mounting bracket on step and rail. Use M8 x3 0mm bolts, flat washers and nyloc nuts (supplied).
- Finger tighten only.



## Stage 15

- Align steps to vehicle and tighten all nuts.



## Stage 16

- Align protection bar and side rails on vehicle, finger tighten bolts on protection bar.

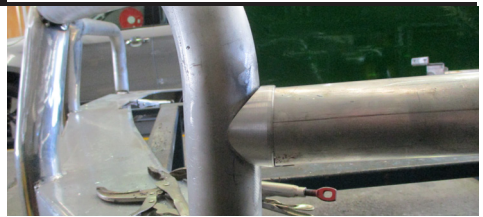


## Stage 17

- Fit rail end caps mark where the are positioned on shoulders of protection bar.
- Using end cap as a guide drill 10mm hole through shoulder pipe.

Note: Inside of tube is a solid section to remove the probability of pulling out in an accident. Ensure drilled hole is at the correct angle.

- Drill hole in front of shoulder to 17mm with a sharp drill bit. Remove internal burr from tube to ensure bolt cap will catch correctly on inside of tube.



## Stage 18

- Secure rail to shoulder with M10 x 1.5 x 90mm hex cup bolt and M10 spring washer (supplied).
- Slowly tighten up until secure and into position.
- Fit bolt cap to 17mm hole.



# Toyota Landcruiser 79 Series

## Stage 19

- From underside of step most forward bracket, drill two 6mm holes in platform using mount as a guide.
- Secure with black 6mm x25mm screws, flat washer and M6 nyloc nut (supplied).



## Stage 20

- Check protection bar is aligned and tighten all bolts.
- Connect and check lights for correct operation.

## Ensure Number Plate is Clearly Visible

Note: When fitting/refitting the licence plate to the vehicle, ensure there is no obstruction to licence plate vision in accordance with local authorities. If required relocate licence plate to an alternate location.

## Further VFPS Notes

1. Do not attach VFPS to the vehicle using anchorages not intended for this purpose (e.g. engine mounting bolts).
2. Do not use this product for any vehicle make or model, other than those specified by the VFPS manufacturer.
3. Do not remove the plaque or label from the VFPS.
4. Do not modify the structure of the VFPS in any way.
5. No accessory or fitment should project forward of the VFPS forward profile.
6. **Ensure these instructions are left with the vehicle owner and/or operator.**

## Important Information

Periodically check bolts and nuts for correct tightness, especially if traveling on rough roads.

# Installation Kit

---

## Big Tube Bar

1 - Pair ECB steel mounting brackets	4 - M10 x 1.25 x 25mm bolts
2 - M12 x 1.25 x 180mm bolt	4 - M10 Flat washers
6 - M12 x 1.75x 40mm bolt	4 - M10 Spring washers
16 - M12 flat washers	1 - LED Indicator/park light
8 - M12 spring washers	1 - Quick click indi/park kit (IC07LC79INDH)
6 - M12 x 1.75 nuts	1 - 2100mm Length 6mm clip lock
2 - M12 x 1.25 nuts	

## Side Steps (Brush Bars)

2 - Alloy 6mm step spacer	10 - M10 Flat washers
8 - 25mm x 6mm, 11mm hole gearbox spacer	2 - M10 Spring washers
2 - Side bar urethane bolt caps	4 - M10 nyloc nuts
2 - Side bar alloy end caps	4 - M8 x 30mm bolts
8 - M12 x 1.75x 40mm bolt	8 - M8 flat washers
16 - M12 flat washers	4 - M8 Nyloc nuts
8 - M12 x 1.75 nyloc nuts	4 - M6 x 25mm black combo screws
2 - M10 x 1.5 x 90mm Hex socket head screws	4 - M6 flat washers
4 - M10 x 1.5 x 140mm bolt (10.9 rating)	4 - M6 Nyloc nuts

**Please note: Big Tube Bar and brush bar can be supplied separately  
This Instruction covers both parts of this product.**

# Finished Product

---





# Warranty Registration

---

## Contact Details

Name: \_\_\_\_\_

Address: \_\_\_\_\_

\_\_\_\_\_

Product: **BT281SY / 5T281A** \_\_\_\_\_

Email: \_\_\_\_\_

Phone: \_\_\_\_\_

Work Order Number: \_\_\_\_\_

You can find this on the silver label  
of your ECB product.

By submitting this registration you automatically subscribe to ECB's mail outs.  
You can unsubscribe at any time.

## Register Online

For online registration please go online to [www.ecb.com.au/warranty-registration](http://www.ecb.com.au/warranty-registration)  
If you have any questions please contact our national office on 1800 069 145 or  
[www.ecb.com.au](http://www.ecb.com.au).

## Or Post To

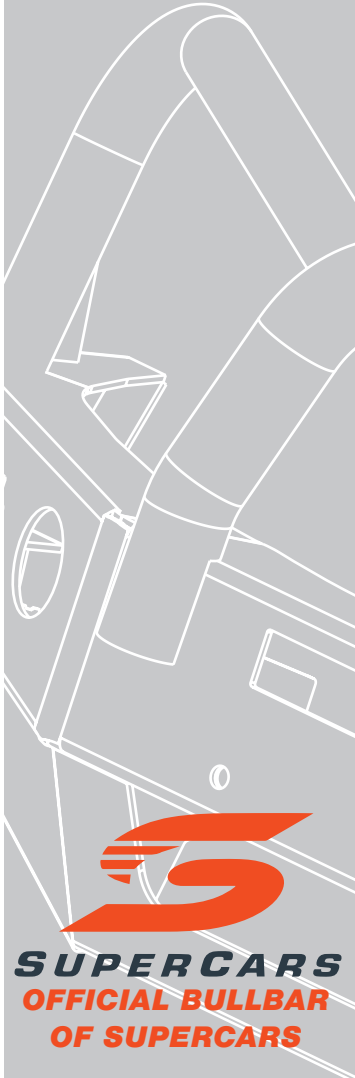
PO Box 122, Margate, QLD 4019





REPLACES: 24.02.21

REVISED: 05.05.21



1800 069 145  
[www.ecb.com.au](http://www.ecb.com.au)

# **Strongest Built Australian Made Lifetime Warranty**

29 Snook St, Clontarf QLD 4019  
PO Box 122, Margate QLD 4019