



**WORLD'S BEST
ALLOY BULLBARS**

**Strongest Built
Australian Made
Lifetime Warranty**

PN:BMA120SY



Fitting Guide & Owners Manual MAZDA CX8

08/2018on

BIG TUBE BAR
VEHICLE FRONTAL PROTECTION SYSTEM (VFPS)
FOR AIR BAG & ADR COMPLIANT VEHICLES



Index

Pages 3-5

ECB's Benefits
Product Care

Pages 6-7

Stage 1 - Vehicle Preparation
Stages 2 to 5 - Bumper Removal
Stage 6 - ECB Mount Fitment

Pages 8-9

Stage 7 to 9 - ECB Mount Fitment
Stages 10 to 11 - Air Dam Refitment
Stage 12 - Sensor Removal and Extension

Pages 10-11

Stages 13 to 14 - Camera Removal and Refit
Stage 15 - Sensor Refitment
Stage 16 - Light Wiring
Stage 17 - Bumper Trim
Stage 18 - Air Deflector Trim
Stage 19 - Bumper Refitment

Pages 12-13

Stages 20 to 21 - Protection Bar Fit out
Stage 22 - Protection Bar installation
Final Checks

Pages 14-15

Fitting Kit
Finished Product

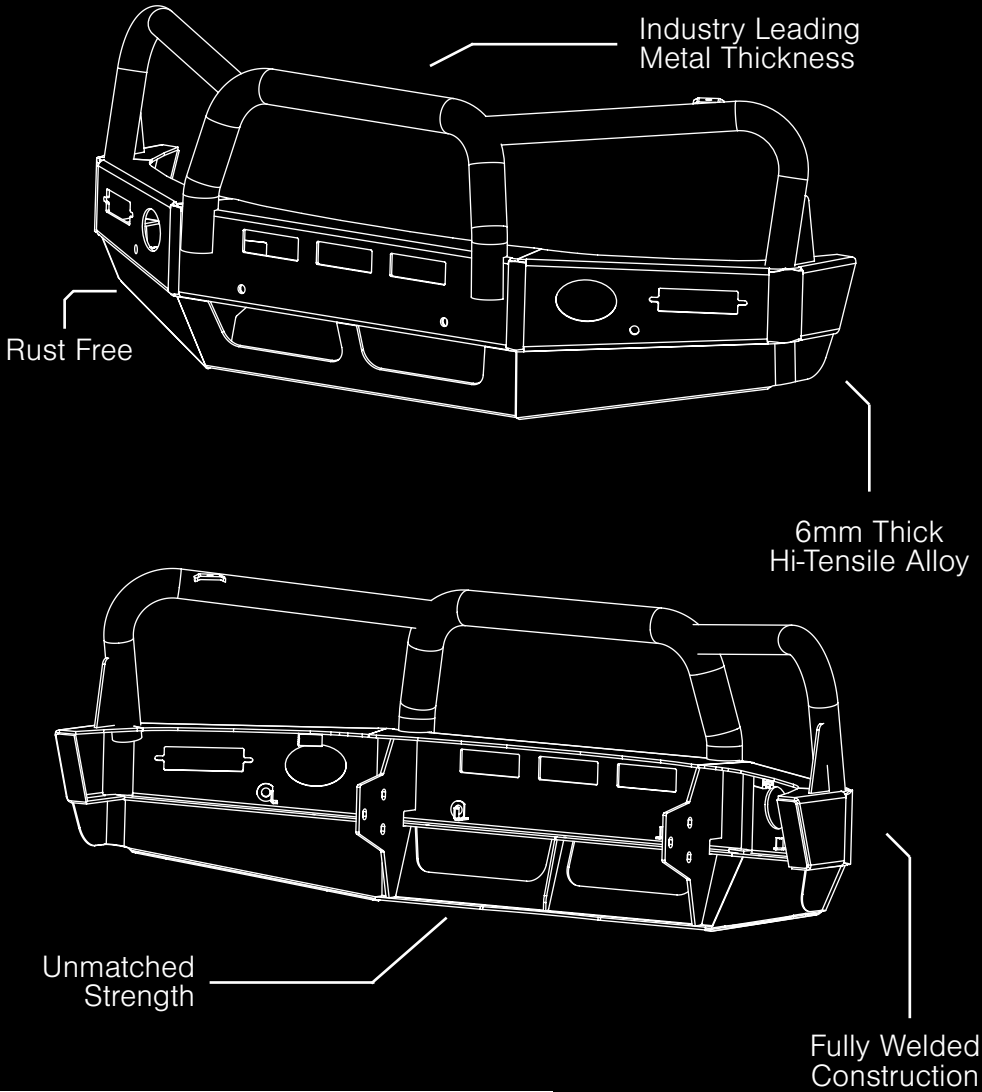
Pages 16-17

Current Promo - TBC
Warranty Registration

Pages 14-15

Notes

The Features of ECB



*Generic Big Tube Bar Shown

ECB's Benefits

Built to Perform - Not to a Price

ECB are proud to claim that their channels are not jigsaw puzzles that are bolted together, or even multiple sections welded together. Where any welding is required, it is done to the highest standards by qualified welders, not machines.

Anti-Corrosive Nature of Alloy

The composition of ECB's alloy has a very high resistance to corrosion. Rust not only looks unappealing but greatly reduces the strength of the metal. Rust can and will weaken the structural integrity of a steel bullbar effectively rendering it useless over time.

Australian Made

Established in 1971, we utilise over 46 years of experience designing, engineering and building products in Australia to suit Australian conditions. We can ensure the best quality controls and help support the local economy and employ over 90 proud Australians.

Weight Saving Benefits

An ECB alloy bullbar is typically half the weight of a steel bullbar. Unnecessary suspension upgrades are not required. The reduced weight also contributes to increased fuel economy and less wear and tear on tyres, suspension and braking components.

Welds That Work

ECB uses only the strongest welds and welding techniques to ensure every product is as structurally sound as possible. MIG (Metal Inert Gas) welding techniques are employed ensuring the welds are as thick as the thickest section of alloy's being joined together.

Lifetime Warranty

ECB provide a lifetime warranty and consumer guarantee on all of our manufactured products. This guarantee highlights the confidence in our ability and provides complete peace of mind for your purchase for the lifetime you own your vehicle.

Product Care

Polished Products

Being a premium mirror polished finish, regular maintenance will be required to keep that iconic ECB shine. We recommend using our own brand of Aluminium Polish, This formula has been tried and tested and in our opinion is the world's best standard.

Directions: Apply a small quantity of Aluminium Polish to a clean soft cloth and rub the metal surface. The longer the rubbing the brighter the surface becomes. Wipe off Aluminium Polish with clean soft cloth. Also suitable for motorised buffing machines. **Note: There are more specific details on the polish bottle. Please read before use.**

Powdercoated Products

Our powdercoated finishes are very low maintenance, Infact there is actually very little you will ever need to do for this product. Just clean it as you would your car and it will stay looking good as new.

ECB Aluminium Polish

When you're looking for that showroom finish look for your polished automotive products, you can depend on the no compromise quality of East Coast Bullbars Aluminium Polish. This specifically designed product is the best polish available and we guarantee that this \$#!+ works. With over 40 years of manufacturing polished alloy products we have trialled a large range of different polishes on the market and believe without a doubt that nothing beats the finish quality of East Coast Bullbars Aluminium Polish.

East Coast Bullbars Aluminium Polish is excellent for use by hand and is ideal for polished bullbars, nudge bar and stainless steel products. This polish will clean, polish and protect your product from the elements whilst bringing your products back to that showroom finish look.



Big Tube Bar

Stage 1

- Test drive vehicle to ensure all driver assists are correctly working and to gauge effectiveness. Park on a flat level surface.
- Apply parking brake and lift bonnet.
- Unwrap ECB Protection bar and disconnect steel mounting brackets. Discard bolts.



Stage 2

- Remove centre trim from top of bumper by removing two black push-pull clips. Remove four (4) Phillips head screws and four (4) push-pull clips from top of bumper.



Stage 3

- From front of wheel arch, remove two (2) push pull plastic clips.
- Gently pull outer wheel arch trim away from bumper and guard to release plastic clips.

Caution: take care not to stress wheel arch trim as this will stretch the plastic supports in the rear and make it difficult to re-fit to position.



Mazda CX8 08/2018on

Stage 4

- From front of wheel arch (per side) remove three (3) push-pull clips, ten (10) phillips head screws, and two (2) push-pull clips from under side of bumper. Pull centre of under body guard down and remove two (2) push-pull clips from bumper. Remove one (1) 10 mm head bolt from rear wing (per side).
- Disconnect fog lights and parking sensors.
- Carefully pull out on rear wing to unclip bumper from guard, pull bumper forward to unclip from headlight.



Stage 5

- Remove foam pad from bumper support.
- Remove lower centre ducting by releasing one (1) 10mm head bolts and two (2) push pull plugs.

Stage 6

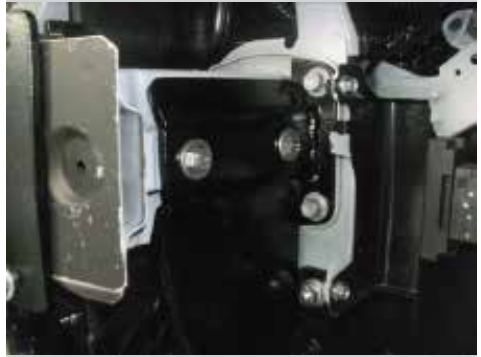
- Remove two (2) 14mm head bolts on outside of chassis rail at bumper support join. Using a 18mm drill or die grinder, enlarge outside only of front and rear holes in crash can (per side) to fit chassis spacers.
- **Blow filings clear and treat all exposed metal with a rust inhibitor.**



Big Tube Bar

Stage 7

- Install ECB tow hooks (supplied) onto crash can using original 14mm head bolts and M10 washers into chassis rail and tube spacers into bumper support. Two (2) M8 x 120 bolts can be installed to hold chassis spacers in place whilst drilling mount in next step. Fit Nuts to rear of bolts as locking nuts.



Stage 8

- Drill rear chassis mount to 10mm, using ECB tow hook as a guide.
- **Blow filings clear and treat all exposed metal with a rust inhibitor.**
- Install M10 x 40 bolts, flat washers, spring washers and nuts (supplied) into drilled holes.



Stage 9

- Fit ECB steel mounting brackets (supplied) onto front of bumper support using inner ECB steel mounting brackets, two (2) M10 x 100 x 1.5 bolts, flat washers and nyloc nuts (supplied) and two (2) M8 x 120mm bolts, flat washers and nyloc nuts (supplied) through ECB tow hooks.
- Centralise ECB steel mounting brackets to front of vehicle and measure inside of alloy protection bar to set ECB steel mounting bracket in correct position.
- Align and **tighten all bolts.**



Mazda CX8 08/2018on

Stage 10

- Mark and cut foam pad to fit around mounts on bumper reinforcement. (Secure with zip-tie if required).



Stage 11

- Mark and cut air deflector to fit around top of mounts.
- Refit to vehicle.



Stage 12

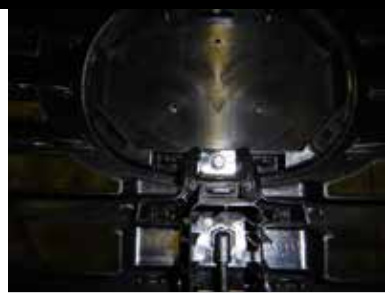
- Remove sensors from bumper and retaining outer and refit into the protection bar,
- Extend the sensor wiring with 300mm wire extensions and solder joiners (supplied).



Big Tube Bar

Stage 13

- Remove camera mount from bumper, three (3) phillip head screws . At rear of camera remove two (2) phillip head screws.
- Disconnect camera from bumper.
- Extend camera wiring with 300mm of wire extensions and joiners , before joining wires remove camera from harness



Stage 14

- Fit camera into mounting bracket using original screws.
- Mount camera into protection bar using two (2) 6g x 3/4 self tapping screws. (supplied)



Stage 15

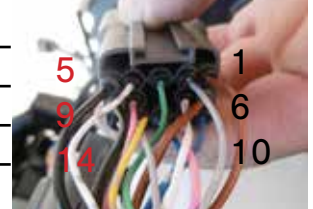
- Remove and discard fog lights from bumper, run outer wiring for sensor through fog light hole.
- Wiring for centre sensors runs through center sensor holes.



Stage 16

- Splice ECB wiring harness into wiring harness under headlight using cable locks (supplied). Ensure harness is clear of sharp edges and moving parts.
- Splice ECB fog light wiring harness into fog light harness on vehicle using cable locks supplied. Ensure harness is clear of sharp edges and moving parts.

Pin No.	Use
1	DRL
5	EARTH
7	INDICATOR
11	PARK



Mazda CX8 08/2018on

Stage 17

- Find template in this instruction.
- As printers can vary, check scaling to ensure correct. Using sharp scissors, carefully cut out template.
- Tape bumper with masking tape to avoid damage to bumper. Mark the bumper and check measure to alloy protection bar and steel mounts. Drill corners and cut bumper with a jigsaw or similar to fit over the steel mounts.



Stage 18

- Mark and cut lower centre air deflector to fit over steel mounts



Stage 19

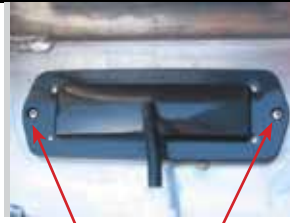
- Refit bumper onto vehicle in the reverse steps of stage 2 to 4.



Big Tube Bar

Stage 20

- Fit ECB LED indicator / park lights into protection bar as per instructions supplied with the LED indicator kit.
NOTE: Ensure park light is to top.
- Attach ECB fog lights to protection bar. Place M6 x 20 bolts, spring washers (supplied) through light mount from inside and attach nut to top. Slide assembly into light mount in Protection bar and centralize light to hole. **TIGHTEN FIRM ONLY.**



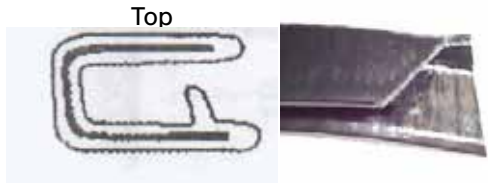
Stainless steel phillips screws



M6 bolt and spring washer with nut to top

Stage 21

- Attach 6mm clip lock trim (supplied) to top of ECB protection bar. NOTE: Trim off lower edge on an angle so trim will sit flush with end of protection bar.



Top



Stage 22

- Fit protection bar onto vehicle using three (3) M12 x 40 x 1.75 bolts, flat washers, spring washers and nuts (per side) (supplied).
- Align protection bar with vehicle and **tighten bolts.**
- Connect sensors and camera .

Warning: Test parking sensors and camera for correct operation. Should parking sensors and camera not work correctly,



Final Checks & Fitting Kit

Ensure Number Plate is Clearly Visible

Note: When fitting/refitting the licence plate to the vehicle, ensure there is no obstruction to licence plate vision in accordance with local authorities. If required relocate licence plate to an alternate location.

Further VFPS Notes

1. Do not attach VFPS to the vehicle using anchorages not intended for this purpose (e.g. engine mounting bolts).
2. Do not use this product for any vehicle make or model, other than those specified by the VFPS manufacturer.
3. Do not remove the plaque or label from the VFPS.
4. Do not modify the structure of the VFPS in any way.
5. No accessory or fitment should project forward of the VFPS forward profile.
6. **Insure these instructions are left with the vehicle owner and/or operator.**

Important Information

Periodically check bolts and nuts for correct tightness, especially if traveling on rough roads.

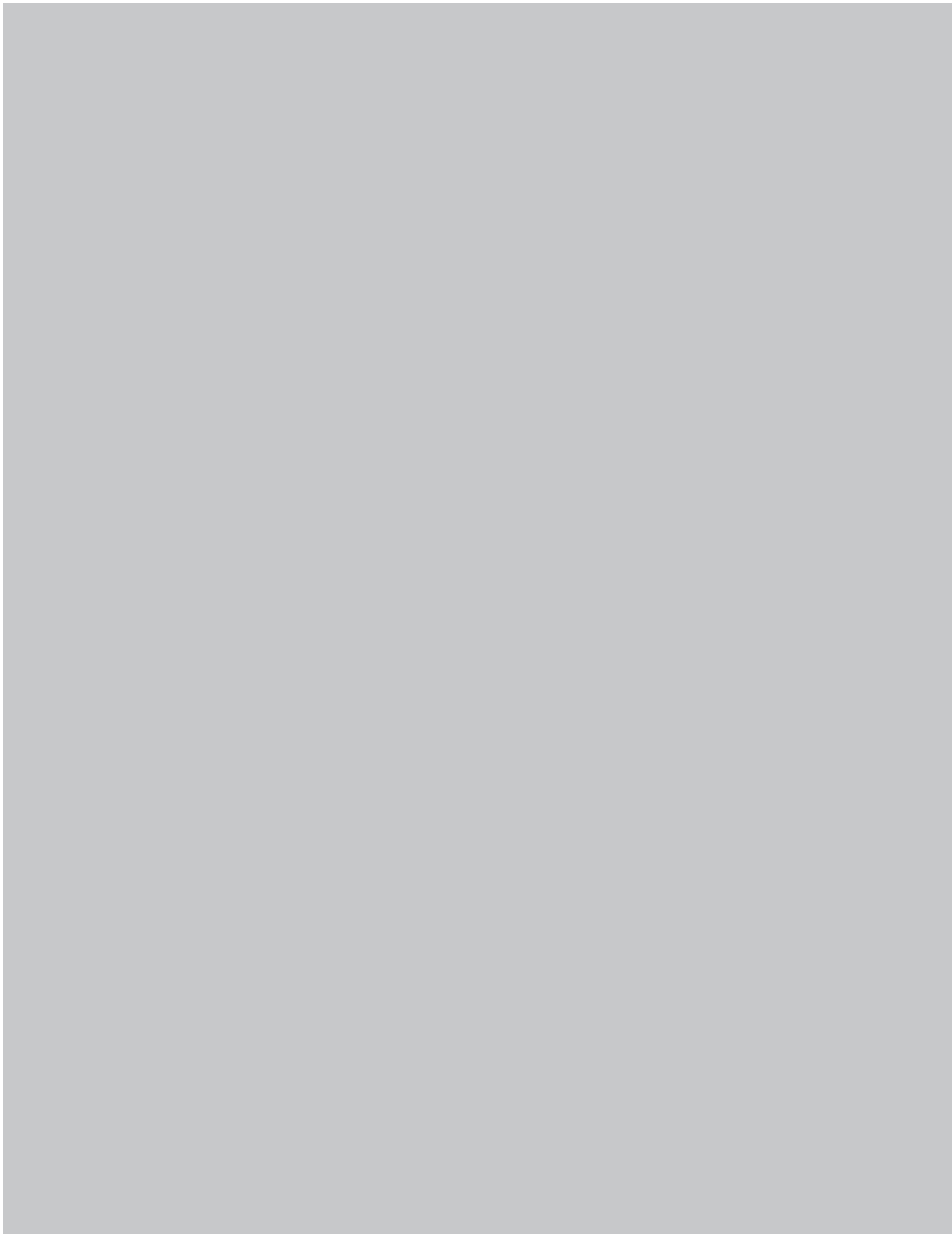
Fitting Kit

1 - Pair steel mounting brackets	8 - M8 flat washers
1 - Pair steel tow hooks	4 - M8 nyloc nuts
2 - Inner steel mounting brackets	4 - M8 nuts
1 - Camera mounting bracket	2 - M6 x 20mm bolts
4 - 10Nb, 93mm Tube spacers	2 - M6 spring washers
6 - M12 x 1.75 x 40mm bolts	2 - M6 nuts
12 - M12 flat washers	2 - 6g x 3/4 self-tapping screws
6 - M12 spring washers	1 - Indicator/Park Light/DRL kit (ICLED105ECB)
6 - M12 nuts	1 - Fog light kit
4 - M10 x 1.5 x 100mm bolts	10 - Cable locks
2 - M10 x 1.5 x 40mm bolts	1- 2200mm length 6mm clip lock tirm
16 - M10 flat washers	12 - 300mm lengths single core wire
6 - M10 spring washers	24 - Solder joiners
6 - M10 x 1.5 nuts	2 - 25mm black blanking plugs
4 - M10 x 1.5 nyloc nuts	6 - 300mm zip ties
4 - M8 x 1.25 x 120mm bolts	

Finished Product



Current Promo TBC



Warranty Registration

Contact Details

Name: _____

Address: _____

Product: _____

Email: _____

Phone: _____

Work Order Number: _____

You Can find this on the silver label
of your ECB product.

By submitting this registration you automatically subscribe to ECB's mail outs. You
can unsubscribe at any time.

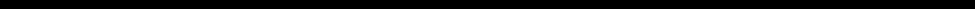
Or Register Online

For online registration please go online to www.ecb.com.au/TBC. If you have any
questions please contact our national office on 1800 069 145 or www.ecb.com.au.



PN: BMA120SY
Please post to PO Box 122,
Margate QLD 4019

Notes



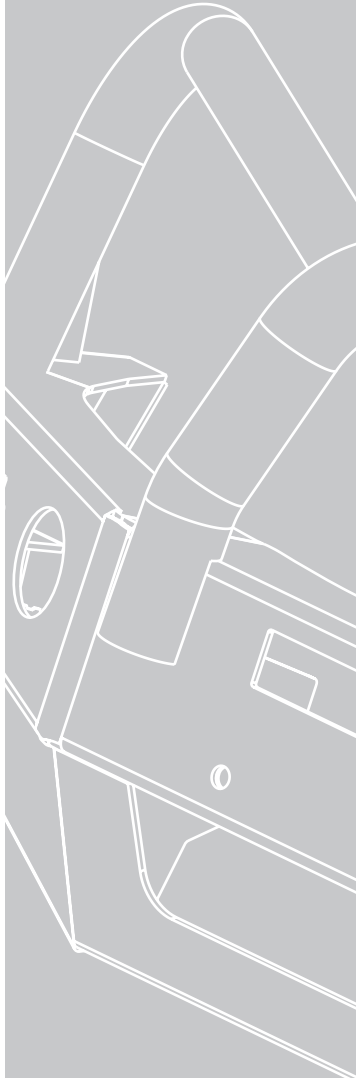
A series of 20 horizontal lines for writing notes, spaced evenly down the page.

_____ Full Name

_____ Date

REPLACES: 08.08.18

REVISED: 02.11.18



1800 069 145
www.ecb.com.au

Strongest Built Australian Made Lifetime Warranty

29 Snook St, Clontarf QLD 4019
PO Box 122, Margate QLD 4019