



**Safer  
Lighter  
Stronger**

PN:BI52SY



# **Fitting Guide & Owners Manual**

## **IVECO DAILY 70C E6 01/21on**

Big Tube Bar  
VEHICLE FRONTAL PROTECTION SYSTEM (VFPS)  
FOR AIR BAG & ADR COMPLIANT VEHICLES

# Index

---

## **Pages 3-5**

ECB's Benefits  
Product Care

## **Pages 6-7**

Stage 1 - Vehicle Testing and Preparation  
Stages 2 to 3 - Remove inner guards  
Stage 4 - Remove underside bumper  
Stage 5 - Remove front bumper  
Stage 6 - Disconnect lights, sonar and headlight washers

## **Pages 8-9**

Stage 7 - Remove bumper  
Stages 8 to 9 - Bumper supports  
Stages 10 to 11 - Steel mounting bracket installation  
Stage 12 - Sonar Cover

## **Pages 10-11**

Stage 13 - Remove Sonar  
Stage 14 - Fit sonar to mount  
Stage 15 - Sonar installation  
Stage 16 - Headlight washer hose  
Stage 17 - Remove fog lights  
Stage 18 - Light Wiring

## **Pages 12-13**

Stage 19 - Indicator/ park lights  
Stage 20 - Fog light installation  
Stage 21 - Protection bar trims  
Stage 22 - Install protection bar  
Stage 23 - Fit side support mounts  
Stage 24 - Align and tighten protection bar

## **Pages 14-15**

Stage 25 - Reconnect sonar and lights  
Stage 26 - Underbelly guards  
Stage 27 - Trim inner guard  
Stage 28 - Secure plastic infills  
Stage 29 - Connect, test and check.  
Final checks

## **Pages 16- 17**

Installation kit  
Finished product

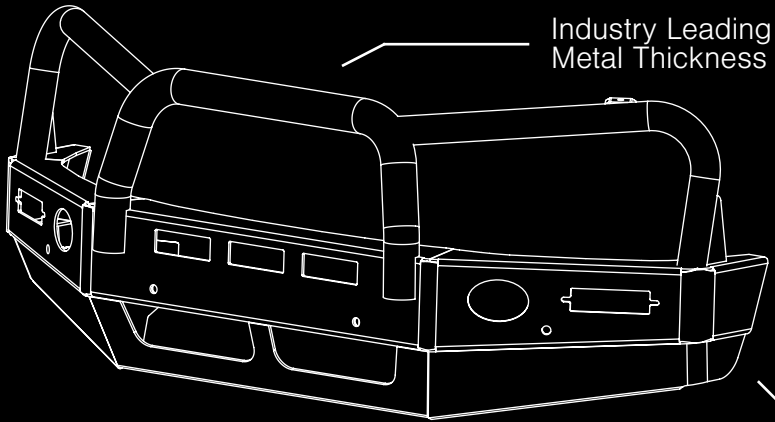
## **Pages 18-19**

Warranty Registration

Please Note: Wiring information supplied in this instruction is for vehicles with halogen lights. If your vehicle is fitted with LED lights, knowledge of Auto electrics will be required.

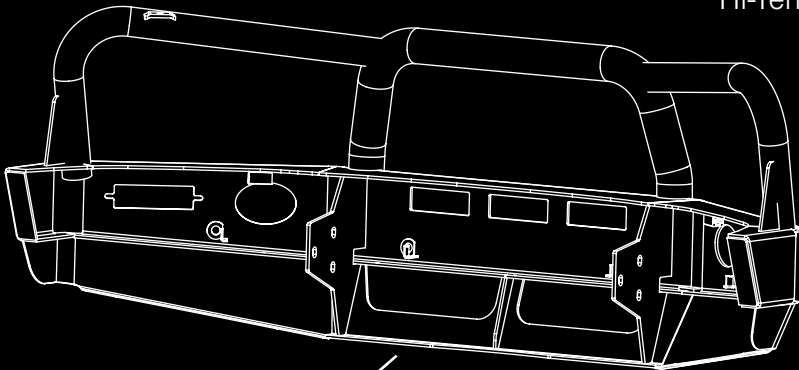
# The Features of ECB

---



Industry Leading  
Metal Thickness

6mm Thick  
Hi-Tensile Alloy



Unmatched  
Strength

Fully Welded  
Construction

# ECB's Benefits

---

## **Built to Perform - Not to a Price**

ECB are proud to claim that their channels are not jigsaw puzzles that are bolted together, or even multiple sections welded together. Where any welding is required, it is done to the highest standards by qualified welders, not machines.

## **Anti-Corrosive Nature of Alloy**

The composition of ECB's alloy has a very high resistance to corrosion. Rust not only looks unappealing but greatly reduces the strength of the metal. Rust can and will weaken the structural integrity of a steel bullbar effectively rendering it useless over time.

## **Australian Made**

Established in 1971, we utilise decades of experience designing, engineering and building products in Australia to suit Australian conditions. We can ensure the best quality controls and help support the local economy and employ over 90 proud Australians.

## **Weight Saving Benefits**

An ECB alloy bullbar is typically half the weight of a steel bullbar. Unnecessary suspension upgrades are not required. The reduced weight also contributes to increased fuel economy and less wear and tear on tyres, suspension and braking components.

## **Welds That Work**

ECB uses only the strongest welds and welding techniques to ensure every product is as structurally sound as possible. MIG (Metal Inert Gas) welding techniques are employed ensuring the welds are as thick as the thickest section of alloy's being joined together.

## **Lifetime Warranty**

ECB provide a lifetime warranty and consumer guarantee on all of our manufactured products. This guarantee highlights the confidence in our ability and provides complete peace of mind for your purchase for the lifetime you own your vehicle.

# Product Care

---

## Polished Products

Being a premium mirror polished finish, regular maintenance will be required to keep that iconic ECB shine. We recommend using our own brand of Aluminium Polish. This formula has been tried and tested and in our opinion is the world's best standard.

**Directions:** Apply a small quantity of Aluminium Polish to a clean soft cloth and rub the metal surface. The longer the rubbing the brighter the surface becomes. Wipe off Aluminium Polish with clean soft cloth. Also suitable for motorised buffing machines.

**Note:** There are more specific details on the polish bottle. Please read before use.

## Powdercoated Products

Our powdercoated finishes are very low maintenance. In fact there is actually very little you will ever need to do for this product. Just clean it as you would your car and it will stay looking good as new.

## ECB Aluminium Polish

When you're looking for that showroom finish look for your polished automotive products, you can depend on the no compromise quality of East Coast Bullbars Aluminium Polish. This specifically designed product is the best polish available and we guarantee that this \$#!+ works. Within our decades of manufacturing polished alloy products we have trialed a large range of different polishes on the market and believe without a doubt that nothing beats the finish quality of East Coast Bullbars Aluminium Polish.

East Coast Bullbars Aluminium Polish is excellent for use by hand and is ideal for polished bullbars, nudge bar and stainless steel products. This polish will clean, polish and protect your product from the elements whilst bringing your products back to that showroom finish look.



# BI52SY

---

## Stage 1

- Test drive vehicle to ensure all driver assists are correctly working and to gauge effectiveness. Park on a flat level surface.
- Apply parking brake and lift bonnet.
- Unwrap ECB Protection bar and disconnect mounts. Discard bolts.
- Ensure these instructions are left with the vehicle owner and/or operator.



**To avoid sonar recalibration, Disconnect battery before starting this install. Refit only after sonar unit is reconnected.**

Please note: On some vehicles, even though battery is disconnected, Recalibration of the sonar unit may need to be conducted. This is completed by your local Iveco dealer.

---

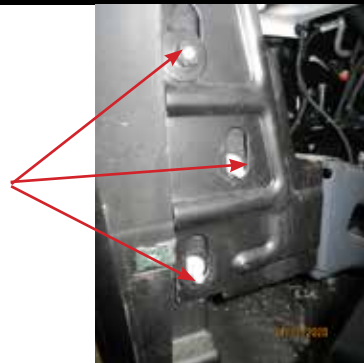
## Stage 2

- Release three (3) 8mm fasteners (per side) from front of wheel arch.
- Remove the inner wheel arch splash guards from each side of the vehicle.



## Stage 3

- Release three (3) 13mm nuts under the wheel arch each side fastening the bumper bar reinforcing panel to the chassis bracket.



# Iveco Daily 70C E6 01/21on

## Stage 4

- From underside of outer bumper, remove two (2) 8mm head screws (per side).



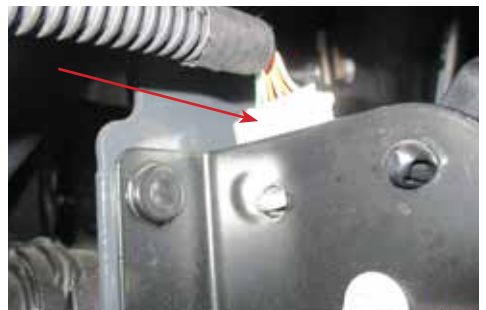
## Stage 5

- Remove caps on front bumper covering bumper fasteners.
- Release the three (3) 13mm nuts each side of bumper.



## Stage 6

- Disconnect sonar unit.
- Remove one (1) T20 torx screw from front of cover over indicator fog lights. Remove cover.
- Disconnect fog lights and indicators.



# BI52SY

## Stage 7

- Remove bumper from vehicle.



## Stage 8

- Remove the bumper support mount from the chassis rail, three (3) 16mm head bolts (per side)(passengers side shown). NOTE: Bottom rear is bolt and nut.
- Driver side has longer bolts for tow hook mount.

**DO NOT REMOVE TOP INNER BOLT**



## Stage 9

- Remove outer wing supports, three (3) 13mm nuts.





# Iveco Daily 70C E6 01/21on

## Stage 10

- Fit ECB steel mounting brackets (supplied).
- Driver side: Use washer plates, M12 x 1.75 x 70mm bolts, flat washers and spring washers (supplied).
- Passenger side: Use washer plates, M12 x 1.75 x 40mm bolts, flat washers and spring washers (supplied). For rear bottom hole use M12 x 1.75 x 40mm bolt, flat washers, spring washer and nut (supplied).
- Align mounts and tighten all bolts.
- Bottom bolts fitted with underbelly guards at later stage.



## Stage 11

- Using steel mount as a guide drill holes in chassis on under side of vehicle to twelve (12mm).
- **Blow all filings clear and treat all exposed metal with a rust inhibitor.**
- Install M12 x 1.75 x 40mm bolts, washer plates, flat washers, spring washers and nuts (supplied).



## Stage 12

- Remove sonar cover from bumper.



# BI52SY

## Stage 13

- Carefully remove sonar from bumper by removing clips from housing.



## Stage 14

- Remove clips from housing in bumper and relocate them into ECB alloy sonar mount.



## Stage 15

- Place sonar to rear of welded mounts in protection bar and plastic cover to front of welded mounts. Attach using M6 x 20mm bolts, spring washers, flat washers and M6 nut on 150mm wire (supplied). Tighten all bolts. (Refer to photo).
- Ensure sonar is mounted with connection point to passengers side of the vehicle, as per photo.



# Iveco Daily 70C E6 01/21on

## Stage 16

- If fitted, remove head light washer hose from bumper and attach to underside front of lower plastic grille, drill holes into plastic and secure with zip ties.



- Reconnect to correct working state.

## Stage 17

- Remove fog lights from bumper.
- From front of lights remove three (3) T20 Torx screws. Remove lights.



## Stage 18

- Splice ECB wiring harness into wiring harness behind headlight using cable locks (supplied). Ensure harness is clear of sharp edges and moving parts.



Indicator connector

Headlight Connector (Halogen light)		
Pin Number	Colour	Use
3	Brown	Ground
4	Yellow	Parking light
12	White	DRL
Individual Indicator connector		
1	Blue	Positive
2	Brown	Ground



Headlight connector

- Please Note: information supplied here is for vehicle with halogen lights.
- Resistors to be installed between indicator wiring positive and ground and must be attached to inside of channel as resistor will get hot.

ECB recommends wiring be completed by a qualified installer.  
Information supplied correct at time of product development.

# BI52SY

## Stage 19

- Fit ECB LED indicator / park lights into protection bar as per instructions supplied with the LED indicator kit. NOTE: Ensure park light is to top.



## Stage 20

- Place fog lights into protection bar, four (4) M6 x 25mm black combo screws, flat washers and nylon nuts (supplied).



## Stage 21

- Attach 6mm clip lock trim (supplied) to top of ECB protection bar. NOTE: Trim off lower edge on an angle so trim will sit flush with end of protection bar.



# Iveco Daily 70C E6 01/21on

## Stage 22

- Fit protection bar to vehicle, M12 x 1.75 x 40mm bolts, flat washers, spring washers and nuts (supplied).
- Do not tighten.



## Stage 23

- Attach outer wing support bracket (supplied) to vehicle, three (3) M8 washers and M8 nyloc nuts, do not tighten nuts.
- Where protection bar meets mount secure with M10 x 1.5 x 35mm bolt, flat washers, spring washers and nuts (supplied).
- Do not tighten.



## Stage 24

- Align protection bar with vehicle and tighten all bolts.



# BI52SY

## Stage 25

- Reconnect sonar unit and fog lights.
- Secure harness to body with zip ties (supplied).

## Stage 26

- Remove front vents to gain access to secure centre underbelly guard.
- Fit outer underbelly guards first using M6 x 25mm black combo screws, flat washers and nyloc nuts in underside of skirt and M6 x 25 bolts, flat washers and nyloc nuts (supplied) in remaining holes.
- Fit centre underbelly guard and washer plate to rear holes using M10 x 1.5 x 35mm bolts, flat washers, spring washers and nuts on 500mm wire (supplied). Feed nuts through front air vents.
- In front holes use M6 x 25mm black combo screws, flat washers and nyloc nuts (supplied).
- TIGHTEN ALL BOLTS and replace vents.



## Stage 27

- Trim inner guards to match underbelly guards



# Iveco Daily 70C E6 01/21on

## Stage 28

- Secure plastic inner guard to outer support mount, drill 6mm hole in line with hole in bracket.
- Secure with M6 x 25mm black combo screw, M6 washer and M6 nyloc nuts (supplied)



## Stage 29

- Test sonar, lights and headlight washers (if fitted) for correct operation.

# Final Checks

## Ensure Number Plate is Clearly Visible

Note: When fitting/refitting the licence plate to the vehicle, ensure there is no obstruction to licence plate vision in accordance with local authorities. If required relocate licence plate to an alternate location.

## Further VFPS Notes

1. Do not attach VFPS to the vehicle using anchorages not intended for this purpose (e.g. engine mounting bolts).
2. Do not use this product for any vehicle make or model, other than those specified by the VFPS manufacturer.
3. Do not remove the plaque or label from the VFPS.
4. Do not modify the structure of the VFPS in any way.
5. No accessory or fitment should project forward of the VFPS forward profile.
6. **Ensure these instructions are left with the vehicle owner and/or operator.**

## Important Information

Periodically check bolts and nuts for correct tightness, especially if traveling on rough roads.

# Installation Kit

---

1 - Pair ECB steel mounting brackets	2 - M10 x 1.5 nuts
1 - Pair outer support brackets suit	2 - M10 x 1.5 Nut and washer on 500mm wire
1 - Sonar mount	6 - M8 Nyloc nuts
1 - Perspex sonar cover	6 - M8 Flat washers
1 - Pair side underbelly guards	20 - M6 x 25mm Black combo screw
1 - Centre underbelly guard	2 - M6 x 25mm bolts
2 - Steel washer plate 80 x 50 x 6mm	2 - M6 x 20mm Bolts
2 - Steel washer plates 100 x 50 x 6mm	46 - M6 Flat washers
3 - M12 x 1.75 x 70mm bolts	2 - M6 Spring washers
13 - M12 x 1.75 x 40mm bolts	2 - M6 nuts on 150mm wire
27 - M12 flat washers	22 - M6 Nyloc nuts
16 - M12 spring washers	1 - Indicator/ Park/ DRL light kit
11 - M12 x 1.75 nuts	8 - Cable locks
4 - M10 x 1.5 x 35mm bolts	2 - Fog light surrounds
6 - M10 Flat washers	1 - 2900mm length 6mm clip lock
4 - M10 Spring washers	10 - 150mm zip ties



# Finished Product

---





# Warranty Registration

---

## Contact Details

Name: \_\_\_\_\_

Address: \_\_\_\_\_

\_\_\_\_\_

Product: **BI52SY** \_\_\_\_\_

Email: \_\_\_\_\_

Phone: \_\_\_\_\_

Work Order Number: \_\_\_\_\_

You can find this on the silver label  
of your ECB product.

By submitting this registration you automatically subscribe to ECB's mail outs.  
You can unsubscribe at any time.

## Register Online

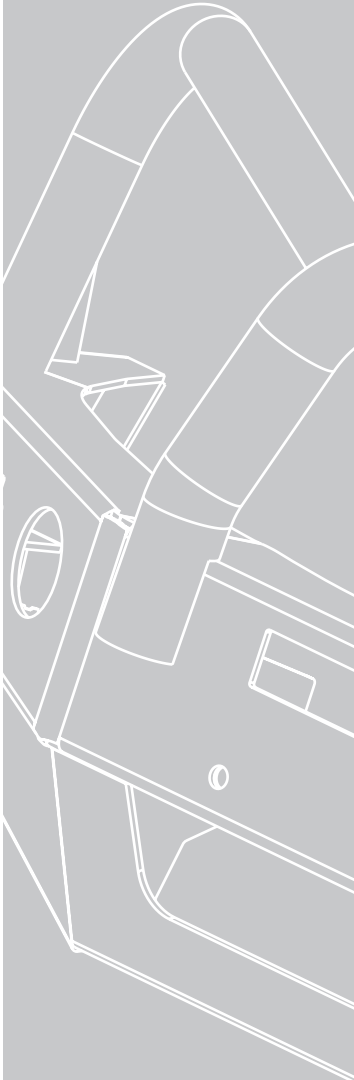
For online registration please go online to [www.ecb.com.au/warranty-registration](http://www.ecb.com.au/warranty-registration)  
If you have any questions please contact our national office on 1800 069 145 or  
[www.ecb.com.au](http://www.ecb.com.au).

## Or Post to

PO Box 122 Margate QLD 4019



REPLACES: N/A  
REVISED: 23.11.21



1800 069 145  
[www.ecb.com.au](http://www.ecb.com.au)

**Safer**  
**Lighter**  
**Stronger**

29 Snook St, Clontarf QLD 4019  
PO Box 122, Margate QLD 4019