



**WORLD'S BEST
ALLOY BULLBARS**

**Strongest Built
Australian Made
Lifetime Warranty**

**PN: 8IZ77SY
NB6IZ77SY
NBIZ77SY**



Fitting Guide & Owners Manual

ISUZU D-MAX X-TERRAIN

06/20 ON

TYPE 8, 63mm SERIES 2 NUDGE BAR & 76mm NUDGE BAR
VEHICLE FRONTAL PROTECTION SYSTEM (VFPS)
FOR AIR BAG & ADR COMPLIANT VEHICLES

Index

Pages 3-5

ECB's Benefits
Product Care

Pages 6-7

Stage 1 - Vehicle Testing and Preparation
Stage 2 - Radiator Trim
Stage 3 - Grille Removal
Stages 4 to 6 - Bumper Removal

Pages 8-9

Stage 7 - Bumper Removal (Cont'd)
Stage 8 - Underbelly Guard Removal
Stage 9 - Bumper Reinforcement Removal
Stage 10 to 11 - Steel mount installation
Stage 12 - Extend sensors

Pages 10-11

Stage 13 - Bumper Trim
Stage 14- Bumper Refit
Stage 15 - Sensor fitment
Stage 16 - Protection Bar Installation
Stage 17 - Underbelly Guard Refit

Pages 12-13

Final Checks & Installation Kit
Finished Product - NBIZ77SY and NB6IZ77SY

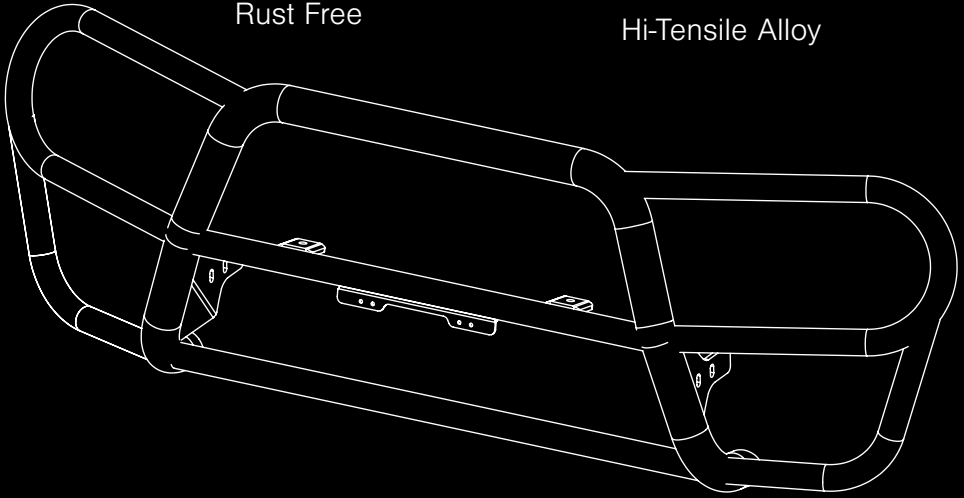
Pages 14-15

Finished Product - 8IZ77SY
Warranty Registration

The Features of ECB

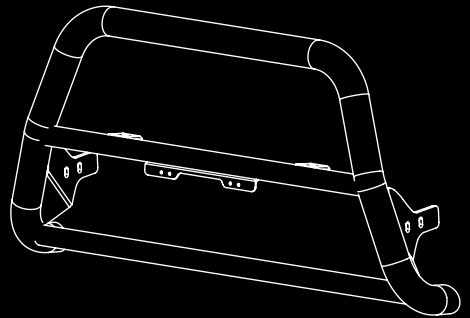
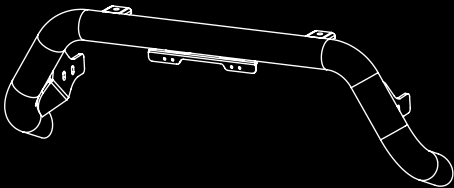
Rust Free

Hi-Tensile Alloy



Unmatched
Strength

Industry Leading
Metal Thickness



Fully Welded
Construction

ECB's Benefits

Built to Perform - Not to a Price

ECB are proud to claim that their channels are not jigsaw puzzles that are bolted together, or even multiple sections welded together. Where any welding is required, it is done to the highest standards by qualified welders, not machines.

Anti-Corrosive Nature of Alloy

The composition of ECB's alloy has a very high resistance to corrosion. Rust not only looks unappealing but greatly reduces the strength of the metal. Rust can and will weaken the structural integrity of a steel bullbar effectively rendering it useless over time.

Australian Made

Established in 1971, we utilise decades of experience designing, engineering and building products in Australia to suit Australian conditions. We can ensure the best quality controls and help support the local economy and employ over 90 proud Australians.

Weight Saving Benefits

An ECB alloy bullbar is typically half the weight of a steel bullbar. Unnecessary suspension upgrades are not required. The reduced weight also contributes to increased fuel economy and less wear and tear on tyres, suspension and braking components.

Welds That Work

ECB uses only the strongest welds and welding techniques to ensure every product is as structurally sound as possible. MIG (Metal Inert Gas) welding techniques are employed ensuring the welds are as thick as the thickest section of alloy's being joined together.

Lifetime Warranty

ECB provide a lifetime warranty and consumer guarantee on all of our manufactured products. This guarantee highlights the confidence in our ability and provides complete peace of mind for your purchase for the lifetime you own your vehicle.

Product Care

Polished Products

Being a premium mirror polished finish, regular maintenance will be required to keep that iconic ECB shine. We recommend using our own brand of Aluminium Polish. This formula has been tried and tested and in our opinion is the world's best standard.

Directions: Apply a small quantity of Aluminium Polish to a clean soft cloth and rub the metal surface. The longer the rubbing the brighter the surface becomes. Wipe off Aluminium Polish with clean soft cloth. Also suitable for motorised buffing machines. **Note: There are more specific details on the polish bottle. Please read before use.**

Powdercoated Products

Our powdercoated finishes are very low maintenance. Infact there is actually very little you will ever need to do for this product. Just clean it as you would your car and it will stay looking good as new.

ECB Aluminium Polish

When you're looking for that showroom finish look for your polished automotive products, you can depend on the no compromise quality of East Coast Bullbars Aluminium Polish. This specifically designed product is the best polish available and we guarantee that this \$#!+ works. Within our decades of manufacturing polished alloy products we have trialled a large range of different polishes on the market and believe without a doubt that nothing beats the finish quality of East Coast Bullbars Aluminium Polish.

East Coast Bullbars Aluminium Polish is excellent for use by hand and is ideal for polished bullbars, nudge bar and stainless steel products. This polish will clean, polish and protect your product from the elements whilst bringing your products back to that showroom finish look.



8IZ77SY, NB6IZ77SY, NBIZ77SY

Stage 1

- Test drive vehicle to ensure all driver assists are correctly working and to gauge effectiveness. Park on a flat level surface.
- Apply parking brake and lift bonnet.
- Unwrap ECB Protection bar and disconnect mounts. Discard bolts.
- Ensure these instructions are left with the vehicle owner / operator.
- Remove number plate if fitted.



Stage 2

- Remove ten (10) push/pull clips from top radiator trim and remove.



Stage 3

- Remove three (3) push/pull clips top of grille.
- Remove one (1) phillips head screw from center of grille.
- Lift up to unclip and remove top of grille.



ISUZU D-MAX X-TERRAIN 06/20on

Stage 4

- Remove four (4) push /pull clips from top of bumper grille between headlights.



Stage 5

- Remove one (1) push/pull clip from rear wing (per/side).



Stage 6

- Remove one (1) 10mm head nut and two (2) push/pull clips from under side of bumper (per/side).



8IZ77SY, NB6IZ77SY, NBIZ77SY

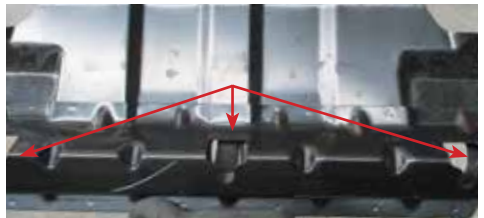
Stage 7

- Unplug light wiring from passenger side
- Pull bumper out on rear wing to unclip from guard retainer.
- Pull bumper forward to unclip from headlight.
- Remove bumper from vehicle.



Stage 8

- Remove two (2) 14mm head bolts from rear of steel underbody guard.
- Loosen only three (3) front 14mm head bolts from guard.
- Slide underbelly guard forward to remove.



Stage 9

- Remove two (2) 14mm head bolts from end of chassis rail (per/side).
- Remove bumper reinforcement.



ISUZU D-MAX X-TERRAIN 06/20on

Stage 10

- Flatten down tab on rear of reinforcement (per/side).



Stage 11

- Refit reinforcement to chassis rail with ECB steel mounting brackets (supplied) between reinforcement and rail using original equipment bolts in front holes.
- Install one (1) M10 x 1.5 x 120mm bolt, flat washers, washer plate and nyloc nuts in rear holes (supplied) (per/side).
- Align mounts and tighten all bolts.

CAUTION: tighten rear bolt firmly only to stop it moving. Overtightening will crush the chassis rail.



Stage 12

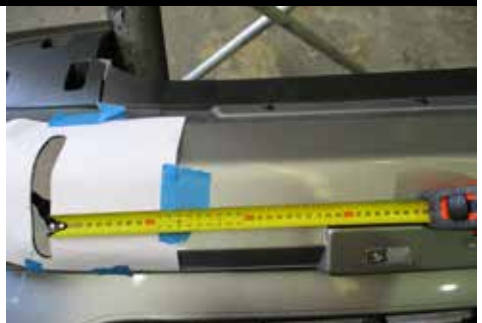
- Remove parking sensors and sensor housings from bumper.
- Extend wiring by 200mm with single core wire and solder joiners (supplied) Place exposed wiring into 10mm convoluted tubing (supplied)
- Plug centre holes in bumper with 25mm plugs (supplied).
- For Type 8 bars, run wiring through existing sensor hole on outer bumper.
- **Housing and sensors to be placed in protection bar same direction as removed from bumper.**



8IZ77SY, NB6IZ77SY, NBIZ77SY

Stage 13

- Find bumper template with this instruction. Using a sharp pair of scissors, cut template from sheet.
- With paper masking tape, cover the area of the bumper to be cut.
- Place ECB bumper cut template onto bumper. Inside cut line is 280mm from number plate holder edge, inside to inside measurement needs to be 860mm. (Check measure before cutting).
- Mark and neatly cut bumper for steel mounting and sensor wiring to protrude through.



Stage 14

- Refit bumper in the reverse step of 3 - 7.
- Center sensor wiring run through on inner side of steel mounts.

CAUTION: Ensure bumper is not tight on the wiring as it could produce a future problem.



Stage 15

- Fit sensor housing and sensor into protection bar.
- On sensor housing B marked on tab this is to face the bottom.

NOTE: Housings and sensor to face same way as prior to removal from bumper.



ISUZU D-MAX X-TERRAIN 06/20on

Stage 16

- Fit ECB protection bar to steel mounting brackets using four (4) M10 x 1.5 x 40mm bolts, flat washers, spring washers and nuts (supplied).
- Align protection bar and tighten all bolts.
- Refit number plate to protection bar plate.



Stage 17

- Refit under body guard using original equipment bolts in the reverse step of 8.
- Connect, check and test sensors working correctly.



Final Checks & Installation Kit

Ensure Number Plate is Clearly Visible

Note: When fitting/refitting the licence plate to the vehicle, ensure there is no obstruction to licence plate vision in accordance with local authorities. If required relocate licence plate to an alternate location.

Further VFPS Notes

1. Do not attach VFPS to the vehicle using anchorages not intended for this purpose (e.g. engine mounting bolts).
2. Do not use this product for any vehicle make or model, other than those specified by the VFPS manufacturer.
3. Do not remove the plaque or label from the VFPS.
4. Do not modify the structure of the VFPS in any way.
5. No accessory or fitment should project forward of the VFPS forward profile.
6. **Ensure these instructions are left with the vehicle owner and/or operator.**

Important Information

Periodically check bolts and nuts for correct tightness, especially if traveling on rough roads.

Installation Kit

1 - Pair steel mounting brackets	4 - M10 x 1.5 nuts
2 - 40 x 40 x 6 Square steel washer plate	2 - 8 -18 x 25 self drilling screws
4 - M10 x 1.5 x 40mm bolts	2 - 25.4mm black plugs (5503)
2 - M10 x 1.5 x 120mm bolts	12 - 200mm lengths single core wire
12 - M10 flat washers	24 - Solder joiners
4 - M10 spring washers	4 - 250mm lengths 10mm convoluted tubing
2 - M10 x 1.5 nyloc nuts	

Finished Product



Finished Product



Warranty Registration

Contact Details

Name: _____

Address: _____

Product: **8IZ77SY, NB6IZ77SY, NBIZ77SY**

(Please circle your part number)

Email: _____

Phone: _____

Work Order Number:

You can find this on the silver label of your ECB product.

By submitting this registration you automatically subscribe to ECB's mail outs. You can unsubscribe at any time.

Register Online

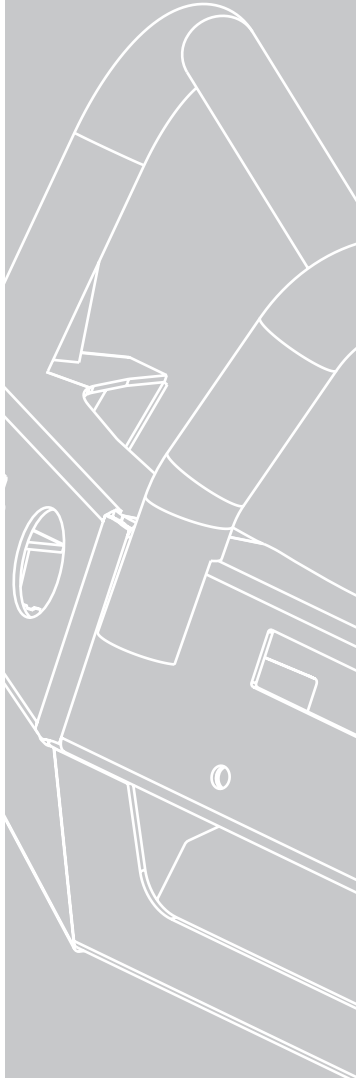
For online registration please go online to www.ecb.com.au/warranty-registration
If you have any questions please contact our national office on 1800 069 145 or www.ecb.com.au.

Or Post To:

PO Box 122, Margate, QLD 4019



REPLACES: N/A
REVISED: 08.06.21



1800 069 145
www.ecb.com.au

Strongest Built Australian Made Lifetime Warranty

29 Snook St, Clontarf QLD 4019
PO Box 122, Margate QLD 4019