



ALLOY FRONTAL PROTECTION SYSTEM



ECB LED LIGHT COMBINATIONS, BUMPER LIGHTS AND AIR DIRECTIONAL COOLING VENTS ARE ALL STANDARD FEATURES.

SUITABLE FOR SUBARU FORESTER



BULLBAR

For the ultimate in frontal protection you can't go past the superior strength, quality and style of the ECB Bullbar for your Subaru Forester.

Our Alloy Bullbars are designed to offer maximum frontal protection, while accommodating factory safety features, frontal facing camera and parking sensors.

Bar Features:

- ADR Compliant
- Airbag Compatible
- Steel mounting system
- Fully welded construction
- Won't affect new vehicle warranty
- LED indicator/park light
- Lifetime Warranty
- Lightweight - 33kg



ALLOY FRONTAL PROTECTION SYSTEM



NUDGE BAR

Impact protection is just one of the benefits of this eye-catching Nudge Bar. The vehicle's forward facing camera is relocated to a bracket on the Nudge Bar to retain full functionality of this important safety feature. A camera relocation kit is also standard. The sleek and sporty design will add to the look of your vehicle.

Bar Features:

- ADR Compliant
- Airbag Compatible
- Steel mounting system
- Lifetime Warranty
- Lightweight - 12kg
- Hi-tensile, corrosion resistant alloy tubing
- Won't affect new vehicle warranty
- Spotlight mounting tabs for lights up to 1.75kg
- 76mm x 4.75mm thick tube



SERIES 2 NUDGE BAR

Also available is the Series 2 Nudge Bar to suit the Subaru Forester which has been designed to offer additional impact protection, while acting as a secure mounting platform for additional lights and accessories.



ROO BAR

ECB's Roo Bars are designed to provide protection to the bumper, grille, and headlights in the event of an animal strike. Weighing in at only 16kgs, the Roo Bar is designed for functional performance while adding minimal weight.

FINISH OPTIONS

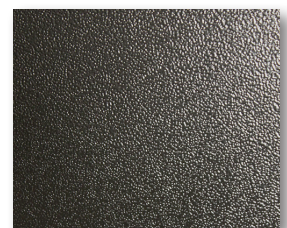
In addition to ECB's signature polished alloy finish, other finish choices include our three virtually maintenance free powdercoat options.



TEXTURA BLACK



SILVER HAMMERTONE



BLACK RIPPLE