



WORLD'S BEST  
ALLOY BULLBARS

**Lighter  
Stronger  
Better!**

**SUPERCARS**  
OFFICIAL BULLBAR  
OF SUPERCARS

# FRONTAL PROTECTION TO SUIT THE NEW IVECO DAILY



**AUSTRALIAN MADE**

**• UNMATCHED STRENGTH**

**• RUST FREE ALLOY**

## **BIG TUBE BAR®** WITH BUMPER LIGHTS

ECB's Big Tube Bar® incorporates a bumper over design. The Big Tube Bar® wraps around the front of the vehicle to provide the strongest and best fit possible.

### **Bars features:**

- 6mm thick hi-tensile alloy one piece channel section
- Fully welded construction
- 76mm x 4.75mm centre tube
- 63mm x 4.2mm shoulder tubes
- Gusseted shoulder tubes
- Braced lower protection skirt
- LED Indicator/Park lights
- LED Bumper lights
- Aerial tab
- Accommodates front sensors



[ecb.com.au](http://ecb.com.au)

**1800 069 145**



**Australian  
Manufactured**



**ADR  
Compliant**



**Airbag  
Compatible**



**Lifetime  
Warranty**

# THE BENEFITS OF ECB'S DNA

## BUILT TO PERFORM - NOT TO A PRICE

ECB are proud to claim that their channels are not jigsaw puzzles that are bolted together, or even multiple sections welded together. They are a one piece, fully welded, 6mm hi-tensile alloy. Where any welding is required, it is done to the highest standards by qualified welders, not machines to make the strongest possible frontal protection products.

## WEIGHT SAVING BENEFITS

Weight is your enemy! A typical ECB alloy bullbar weighs half of what a steel bullbar weighs, and offers the same protection. The reduced weight also contributes to fuel savings, less wear and tear on tyres, suspension and braking components. When towing a caravan or boat reducing unnecessary weight is crucial, the average weight of an ECB Big Tube Bar® is 42kgs.

## ANTI-CORROSIVE NATURE OF ALLOY

The composition of ECB's alloy has a very high resistance to corrosion. Rust not only looks unappealing but will greatly reduce the strength of frontal protection. In fact, the composition of ECB's alloy actually hardens over time ensuring the bullbar will offer maximum protection over the life of the vehicle.

## AUSTRALIAN MADE

Established in 1971, we utilise over 48 years of experience designing, engineering and building products in Australia to suit Australian conditions, ensuring the best quality controls are met. ECB help support the local economy by employing over 80 people in our business, and purchasing from local suppliers.

## WELDS THAT WORK

All ECB products are 100% hand welded, using only the strongest welding techniques to ensure every product is as structurally sound as possible. All ECB frontal protection products are welded using MIG welding to ensure welds are as thick as the materials.

## LIFETIME WARRANTY

Most imported bullbars will offer a limited 1 or 2 year warranty, but ECB are so confident in every product that we provide a "Lifetime Warranty" on all our Australian manufactured products. This guarantee highlights the confidence in our ability and provides complete peace of mind for your purchase.

## 76MM NUDGE BAR

Impact protection is just one of the benefits of this eye-catching 76mm Nudge Bar. Sporty and sleek design and manufactured in Australia to suit our harsh Australian conditions. Available in our mirror polished alloy, or choice of powder coat options.

- Hi-tensile alloy tubing will never corrode or rust
- 76mm x 4.75mm thick tube
- Spotlight mounting tabs
- Accommodates front parking sensors



## FINISH OPTIONS

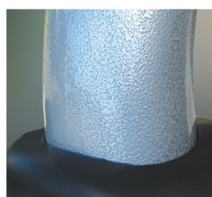
ECB products are finished with the same high standards and exacting methods that are employed in our manufacturing and design processes. When you choose the best products available, you can be sure that they will present as well as they perform.

In addition to ECB's signature polished alloy finish, other finish choices include our virtually maintenance free 3 powdercoat colours.

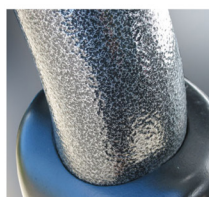
- Silver Hammertone
- Black Ripple
- Silver Ripple



BLACK RIPPLE



SILVER RIPPLE



SILVER HAMMERTONE



**Australian  
Manufactured**



**ADR  
Compliant**



**Airbag  
Compatible**



**Lifetime  
Warranty**